

Frames



301. 19th Century English School
A Gilt Composition Frame, rebate 66"x 40"
(167.7 x 101.6cm)
£200-£300



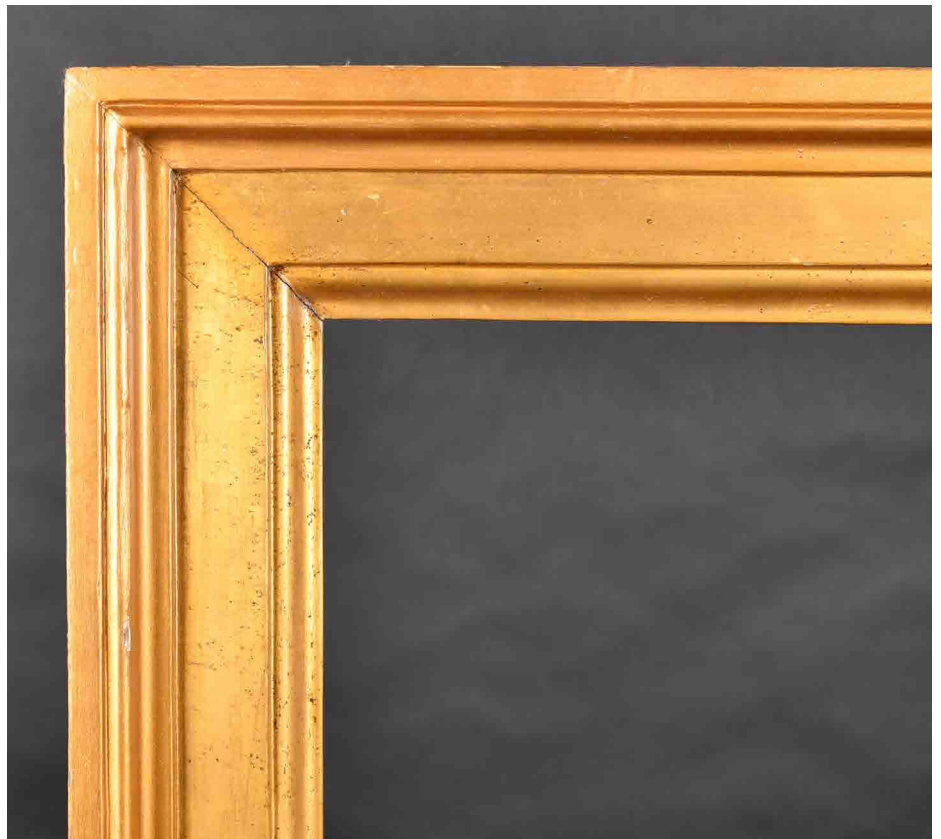
302. 20th Century English School
A Gilt Composition Frame, rebate 60"x 40"
(152.4 x 101.6cm)
£200-£300



303. 21st Century English School
A Black Painted Frame, with gilt edging, rebate 55" x 27.5" (139.8 x 69.8cm)
and another similar, a Black Painted Frame, with a silver slip,
rebate 43.5" x 19.75" (110.5 x 50.1cm) (2)
£40-£60



304. 19th Century English School
A Painted Composition Frame, with swept corners,
rebate 50.5" x 28.5" (128.2 x 72.4cm)
£80-£120



305. 20th Century European School
A Gilt Composition Frame, rebate 50" x 39.25"
(127 x 99.7cm)
£150-£250



306. 20th Century European School
 A Gilt Composition Frame, with swept centres and corners,
 (in two pieces), rebate 49.5" x 29.5" (125.7 x 74.9cm)
 £50-£80



307. 19th Century English School
 A Painted Composition Frame with swept centres and corners,
 rebate 42" x 34" (106.7 x 86.4cm)
 £30-£50



308. Early 20th Century English School
 A Gilt Composition Frame, rebate 40.5" x 30.5" (102.8 x 77.4cm)
 £50-£80



309. 20th Century European School
 A Black and Gilt Composition Frame, rebate 40" x 30"
 (101.6 x 76.2cm)
 £50-£80



310. 20th Century English School
 A Gilt and Painted Frame, with a fabric slip, rebate 40" x 30"
 (101.6 x 76.2cm) without slip 42.75" x 32.75" (108.6 x 80.6cm)
 £50-£80



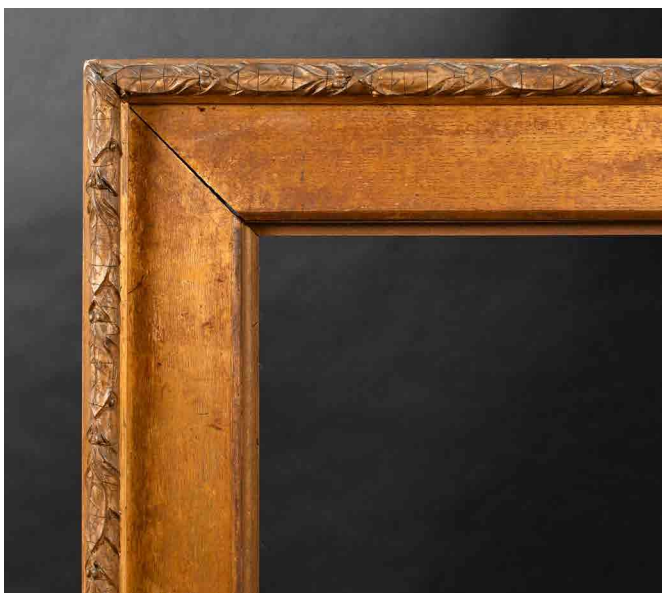
311. 20th Century English School
 A Gilt and Painted Composition Frame, with swept and pierced
 centres and corners, rebate 39.5" x 29.5" (100.3 x 74.9cm)
 £50-£80



312. Early 19th Century English School
A Carved Wood Frame, with swept centres and corners,
rebate 38" x 30.5" (96.5 x 77.5cm)
£80-£120



313. 20th Century French School
A Gilt and Painted Carved Wood Frame, rebate 36.5" x 15.75" (92.7 x 40cm)
£60-£80



314. 19th Century English School
A Painted Composition Frame, rebate 36" x 28" (91.5 x 71.1cm)
£60-£80



315. 19th Century English School
A Painted Composition Frame, with swept corners, rebate 36" x 28"
(91.5 x 71.1cm)
£40-£60



316. 20th Century English School
A Painted Composition Frame, with gilt edging,
rebate 36" x 28" (91.5 x 71.1cm)
£100-£200



317. 20th Century European School
A Gilt Composition Frame, with swept and pierced centres and corners,
rebate 36" x 28" (91.5 x 71.1cm)
£60-£80



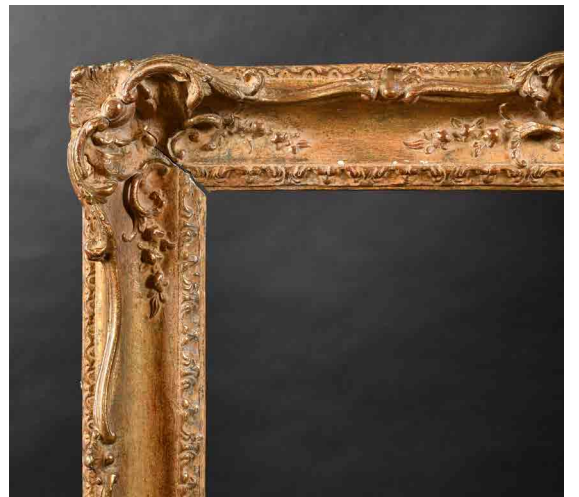
318. 20th-21st Century English School
A Painted Frame, with a gilt slip, rebate 36" x 28" (91.5 x 71.1cm)
£80-£120



319. 19th Century English School
A Gilt and Painted Watts Style Composition
Frame, rebate 36" x 24" (91.5 x 61cm)
£150-£200



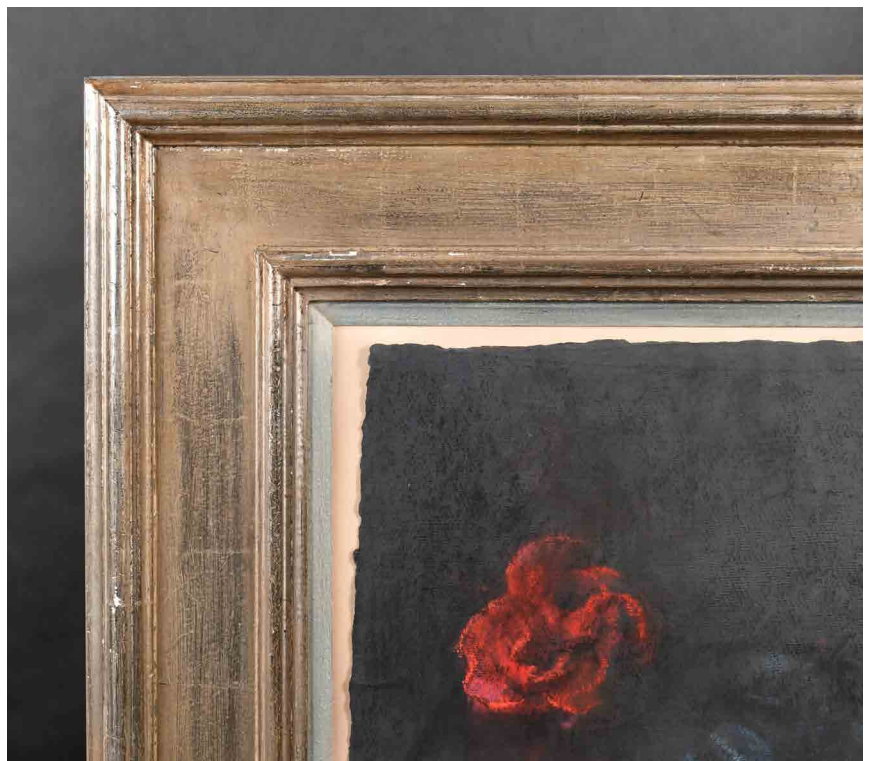
320. 20th Century European School, rebate 36"x 24" (91.5 x 61cm)
£50-£80



321. 20th Century English School
A Gilt Composition Frame, with swept and pierced centres and
corners, rebate 32.25"x 22.25" (81.9 x 56.5cm)
£80-£120



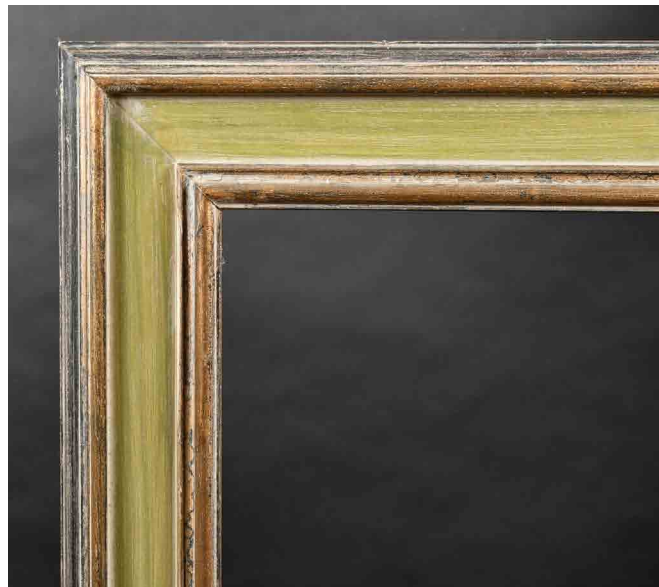
322. 20th Century European School
A Gilt Composition Frame, with a fabric slip,
rebate 32" x 26" (81.2 x 66cm)
£40-£60



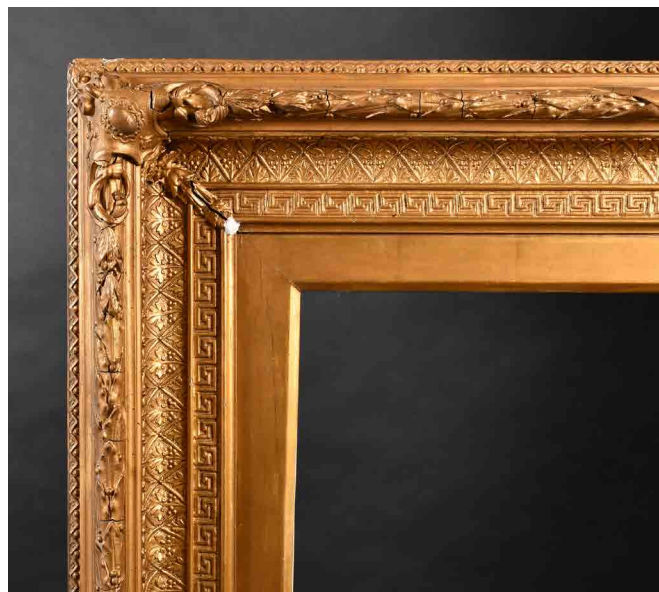
323. 20th Century English School
A Silver Plate Frame, with inset pastel
by Zsuzsi Roboz and with glass,
rebate 32" x 23.5" (81.2 x 59.7cm)
£200-£300



325. 19th Century English School
A Gilt Composition Frame, rebate 31.5" x 25.25" (80 x 64.2cm)
£40-£60



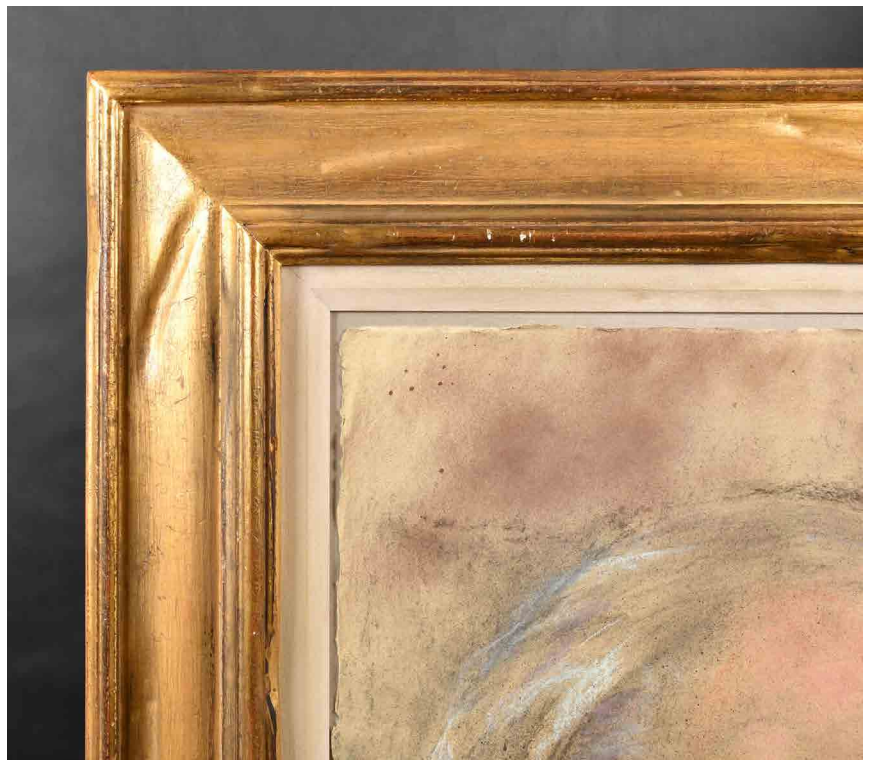
324. 20th Century English School
A Painted Composition Frame, with gilt edging, rebate 31.5" x 25.5"
(80 x 64.8cm)
£60-£80



326. 19th Century English School
A Gilt Composition Frame, rebate 31.25" x 18.5" (79.4 x 47cm)
£40-£60



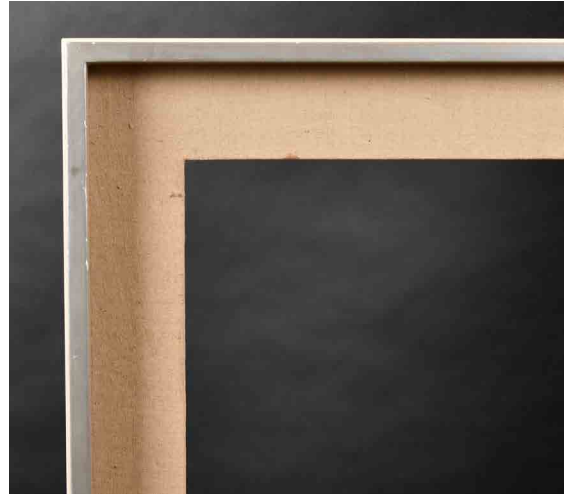
327. Early 19th Century English School
A Gilt and Painted Carved Wood Carlo Style Frame,
rebate 31"x 24.5" (78.8 x 62.2cm)
£150-£250



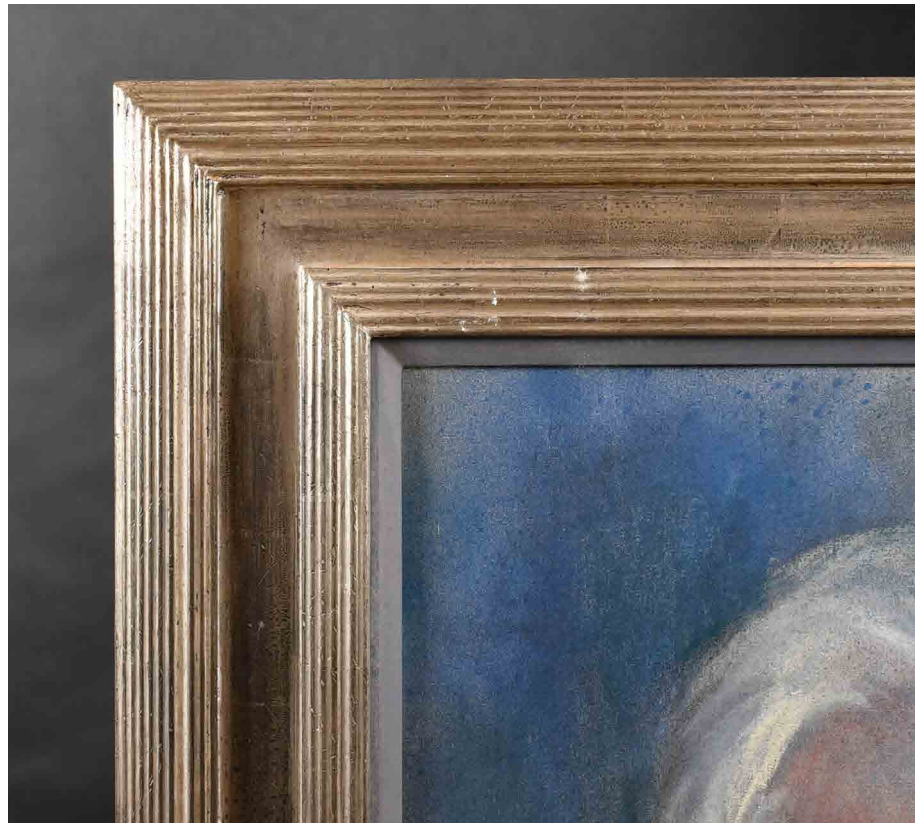
328. 20th Century English School
A Gilt Composition Frame,
with inset pastel by Zsuzsi Roboz with glass,
rebate 30.5"x 23" (77.5 x 58.4cm)
£200-£300



329. 19th Century English School
A Gilt Composition Frame with swept corners, rebate 30" x 25"
(76.2 x 63.5cm)
£80-£120



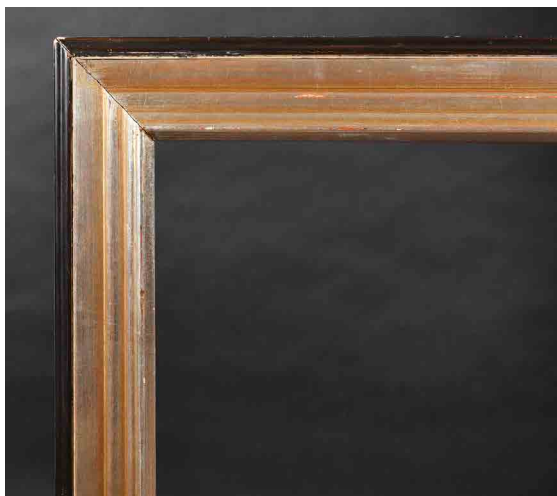
330. 20th Century English School
A Painted Frame, with a fabric slip, rebate 30" x 20" (76.2 x 50.8cm)
and another painted frame, rebate 24.5" x 20.25" (62.2 x 51.4cm) (2)
£40-£60



331. 20th Century English School
A Silver Ribbed Composition Frame,
with inset glass and pastel by Zsuzsi Roboz,
rebate 29.5" x 20.25" (75 x 51.4cm)
£300-£400



332. Early 19th Century English School
A Fine Carved Giltwood Louis Style Frame,
rebate 29.5" x 17.5" (75 x 44.4cm)
£300-£500



333. 20th Century European School
A Silver Composition Frame, with a dark wood outer edge,
rebate 29" x 25.25" (73.7 x 64.2cm)
£40-£60



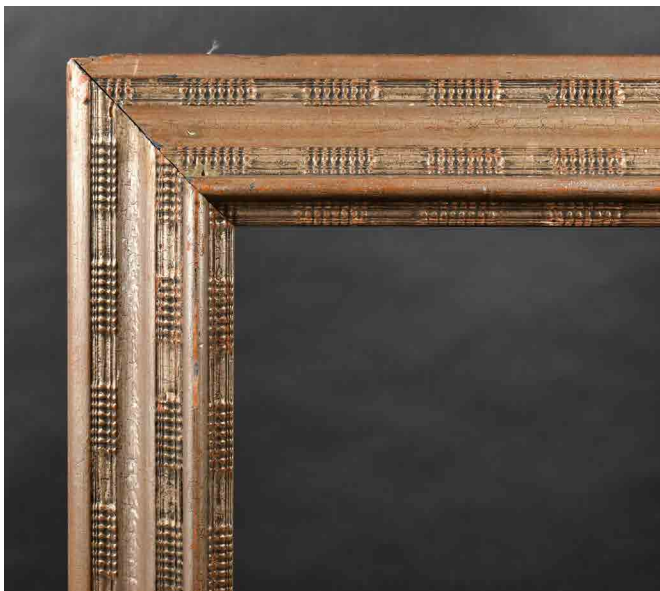
334. 20th Century European School
A Painted Composition Frame, rebate 29" x 23.5" (73.7 x 59.7cm)
£40-£60



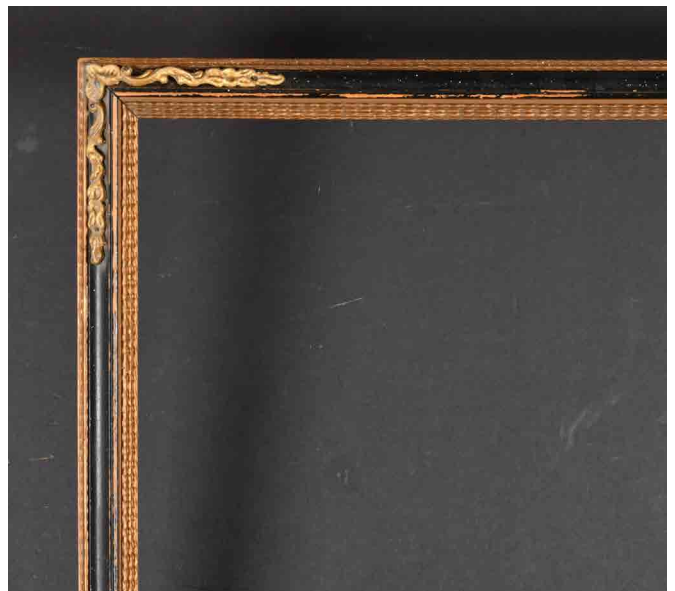
335. Early 20th Century English School
A Gilt Composition Frame, rebate 29" x 22.75" (73.7 x 57.8cm)
£60-£80



336. 20th Century French School
A White Painted Composition Frame, rebate 28.75" x 21.25" (73 x 54cm)
£30-£50



337. Early 20th Century English School
A Silver Composition Frame, rebate 28.75" x 19.5" (73.1 x 49.5cm)
£60-£80



338. 20th Century English School
A Hogarth Style Frame, rebate 28.5" x 22.25" (72.4 x 56.5cm)
£30-£50



339. 19th Century English School

A Maple Frame, with a gilt slip, rebate 28"x 21.5" (71.1 x 54.6cm) and two others similar, rebate 24"x 20.5" (61 x 52.1cm) and rebate 20"x 15.25" (50.8 x 38.7cm) (3)
£80-£120



340. 20th Century English School

A Gilt Composition Frame, rebate 28"x 21.25" (71.2 x 54cm)
£50-£80



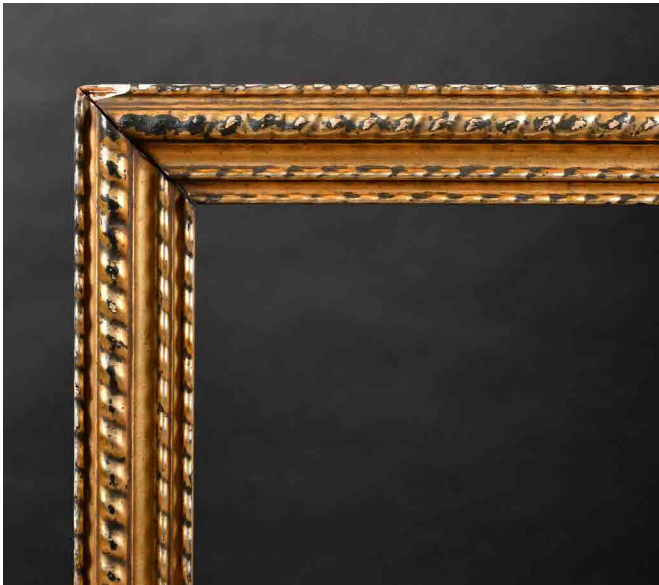
341. 20th Century European School

A Black Composite Frame, rebate 27.5"x 20.5" (69.8 x 52.1cm)
£50-£80



342. 20th Century English School

A Gilt Composition Frame, with swept and pierced centres and corners, rebate 27.5"x 19.5" (69.8 x 49.5cm)
£80-£120



344. Early 19th Century English School
 A Rippled Silver Composition Frame, rebate 26.75" x 22.5"
 (67.9 x 57.2cm)
 £100-£200



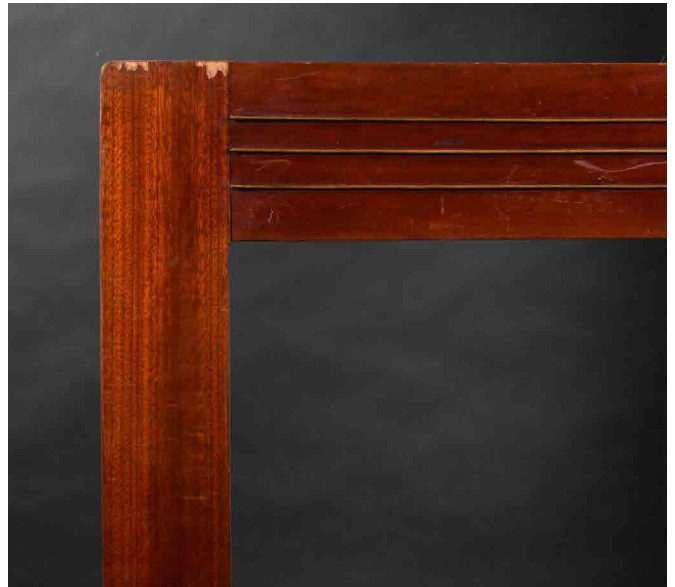
343. 19th Century English School
 A Cushioned Maple Frame, with a gilt slip, rebate 27" x 20"
 (68.6 x 50.8cm)
 £60-£80



345. 19th Century English School
 A Gilt Composition Frame, with swept centres and corners,
 rebate 26" x 21.25" (66 x 54cm)
 £30-£40



346. 20th Century English School
A Gilt and Painted Composition Frame, rebate 25.75" x 19.75"
(65.4 x 50.2cm)
£40-£60



347. Early 20th Century European School
A Deco Style Wooden Frame, with metal inlays, rebate 25.5" x 19.25"
(64.8 x 48.9cm)
£80-£120



348. Early 19th Century French School
A Gilt Composition Empire Frame, rebate 25.5" x 19" (64.8 x 48.2cm)
£100-£200



349. 20th Century Dutch School
A Wooden Frame, rebate 25.5" x 18.5" (64.8 x 47cm)
£50-£80



350. Early 20th Century European School
 A Gilt Composition Frame, rebate 25" x 19"
 (63.5 x 48.2cm)
 £80-£120



351. 19th Century French School
 A Louis Style Gilt Composition Frame, with swept centres and corners,
 rebate 24.75" x 19.5" (62.8 x 49.5cm)
 £100-£200



352. 20th Century English School
 A White Painted Frame, with a central gold band,
 rebate 24.5" x 12" (62.2 x 30.5cm)
 £30-£50



353. 19th Century English School
A Painted Oval Composition Frame, rebate 24"x 20" (61 x 50.8cm)
£40-£60



354. Early 20th Century European School
A Painted Composition Frame, with swept centres and corners,
rebate 24"x 20" (61 x 50.8cm)
£30-£40



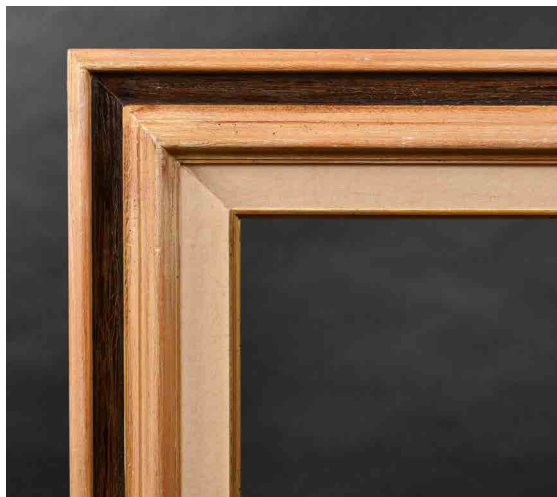
355. 19th Century English School
An Oval Gilt Slip, rebate 24"x 19.5" (61 x 49.5cm)
£30-£40



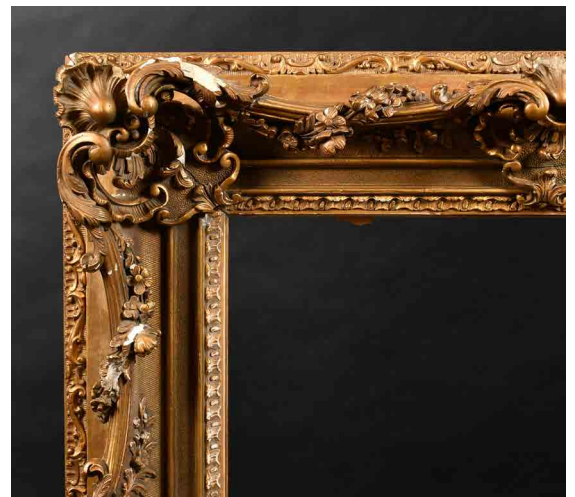
356. 20th Century English School
A Gilt Composition Frame, rebate 24"x 18" (61 x 45.7cm)
£50-£80



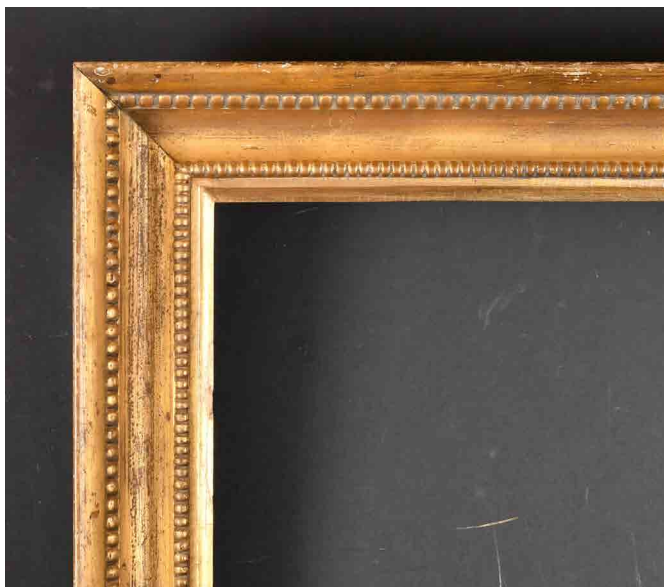
357. 20th Century English School
 A Set of Three Gilt Composition Frames,
 rebate 24" x 18" (61 x 45.7cm) and another
 similar, rebate 24" x 19" (48.2cm) (4)
 £200-£300



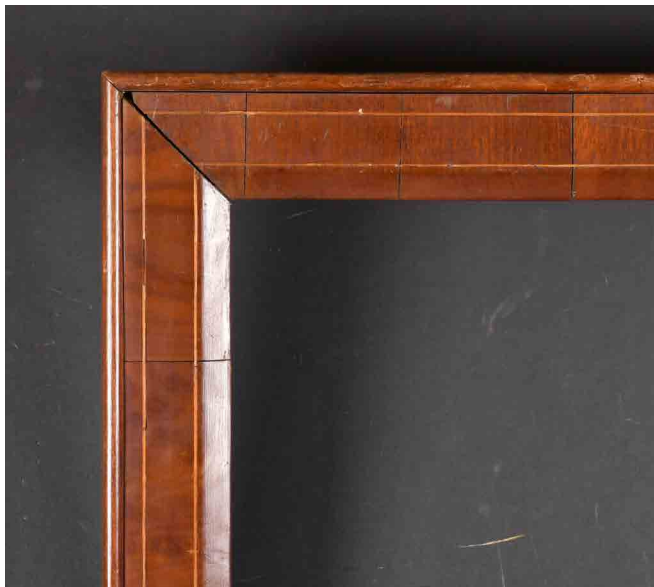
358. 20th Century English School
 A Painted Wooden Frame, with a fabric slip, rebate 24" x 16" (61 x 40.6cm)
 £30-£40



359. 19th Century European School
 A Gilt Composition Frame, with swept and pierced centres and
 corners, rebate 23.75" x 20" (60.3 x 50.8cm)
 £50-£100



361. 19th Century English School
A Gilt Composition Hollow Frame, rebate 23"x 18.5" (58.4 x 47cm)
£100-£200



360. 19th Century English School
A Wooden Inlaid Frame, rebate 23.75"x 16.25" (60.3 x 41.2cm)
£50-£80



362. 18th Century Italian School
A Gilt and Painted Composition Plate Frame, rebate 23"x 17.5" (58.4 x 44.4cm)
£100-£200



363. Early 20th Century French School
A Painted Empire Composition Frame, rebate 22.75" x 17.5"
(57.8 x 44.4cm)
£30-£50



364. 19th Century English School
A Maple Frame, with a painted slip, rebate 22.5" x 18" (57.2 x 45.7cm)
£60-£80



365. 20th Century European School
A Painted Composition Frame, rebate 22" x 18" (55.9 x 45.7cm)
£40-£60



366. 20th-21st Century European School
A Louis Style Gilt Composition Frame, with swept corners,
rebate 21.75" x 18" (55.3 x 45.7cm)
£60-£80



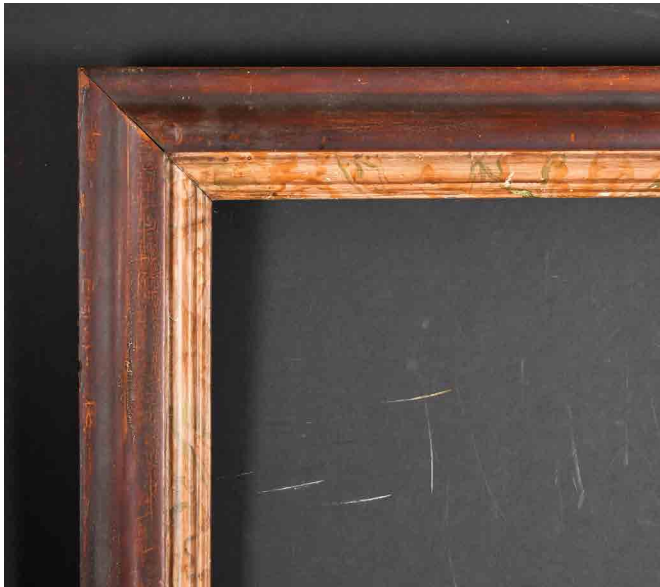
367. Late 18th Century French School
A Louis Style Carved Giltwood Frame,
rebate 21.75" x 17.75" (55.3 x 45.1cm)
£200-£300



368. 20th Century English School
A Painted Composition Frame, with gilt inner and outer edges,
rebate 21" x 18" (53.3 x 45.7cm)
£40-£60



369. 20th Century English School
A Painted Composition Frame, rebate 21" x 17.25"
(53.3 x 43.8cm)
£30-£40



370. 19th Century English School
 A Painted Maple Frame, with a painted slip, rebate 20.5"x 16"
 (52.1 x 40.6cm)
 £50-£80



371. 20th Century English School
 A Gilt Composition Frame, rebate 20.5"x 16" (52.1 x 40.6cm) together
 with thirteen slips and frames (14)
 £30-£40



372. 19th Century European School
 A Gilt Composition Frame, rebate 20.5"x 15" (52 x 38.1cm)
 £80-£120



373. 20th Century European School
 A Painted Carved Wood Frame, rebate 20.25"x 17.25" (51.4 x 43.8cm)
 together with two other frames and a gilt slip of various sizes (4)
 £40-£60



374. 20th Century English School
A Painted Composition Frame, with gilt outer edge, rebate 20.25" x 16"
(51.4 x 40.6cm)
£50-£80



375. 19th Century French School
A Gilt Composition Frame, rebate 20.25" x 15.75" (51.4 x 40cm)
£100-£200



376. 19th Century English School
A Darkwood Frame, with a painted slip, rebate 20.25" x 14.25"
(51.4 x 36.2cm)
£50-£80



377. 20th Century English School
A Painted Composition Frame, with swept and pierced centres and corners,
rebate 20" x 14" (50.8 x 35.5cm)
£50-£80



378. 20th Century European School
 A Gilt Composition Frame, with a fabric slip, rebate 19.25" x 17.25"
 (48.8 x 43.8cm)
 £40-£60



379. Early 19th Century English School
 A Carved Giltwood Frame, rebate 19.25" x 14.25" (48.8 x 36.2cm)
 £100-£200



380. 19th Century European School
 A Gilt Composition Frame, rebate 19" x 14.5" (48.2 x 36.8cm)
 £50-£80



381. 19th Century English School
 A Painted Composition Frame, rebate 18.5" x 14.5" (47 x 36.8cm)
 £40-£60



382. Early 20th Century European School
 A Folding Triptych Wooden Frame, with gilt inner and outer edging, rebate
 18.5" x 12.25" (47 x 31.1cm)
 £50-£80



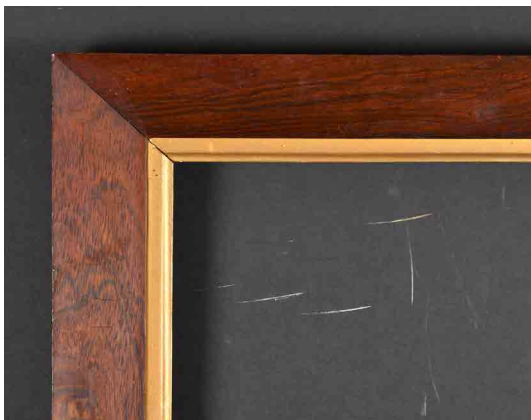
383. 20th Century French School
 A Painted Composition Frame, rebate 18" x 15" (45.7 x 38.1cm)
 £60-£80



384. 20th Century French School
 A Painted Composition Frame, rebate 18" x 15" (45.7 x 38.1cm)
 £60-£80



385. 20th Century French School
 A Painted Composition Frame, rebate 18" x 15" (45.7 x 38.1cm)
 £60-£80



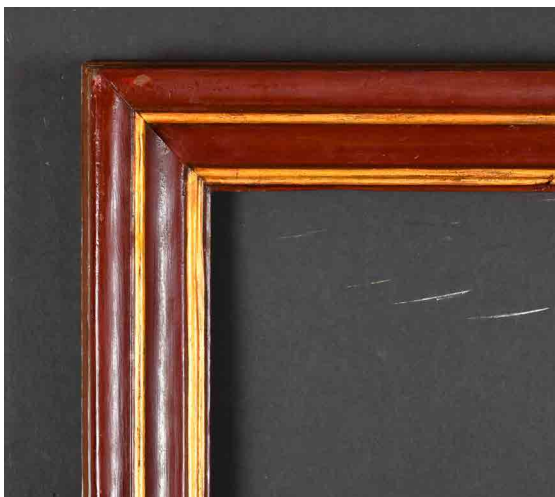
386. 19th Century English School
 A Darkwood Frame, with a gilt slip, rebate 17.75" x 14.5" (45.1 x 36.8cm)
 £50-£80



387. 20th Century English School
 A Wooden Frame, rebate 17" x 14" (43.2 x 35.5cm)
 £40-£60



388. 18th Century English School
 A Carved Giltwood Frame with cherub
 pediment, with inset mirror glass,
 rebate 17" x 13.5" (43.2 x 34.3cm)
 £100-£200



389. 19th Century European School
 A Red and Gilt Composition Frame, rebate 16.5" x 11.25" (41.9 x 28.6cm)
 £50-£80



390. 20th Century European School
 A Painted Composition Frame, rebate 16.25" x 13"
 (41.3 x 33.1cm)
 £40-£60



391. 20th Century English School
A Painted Wooden Frame, with a fabric slip, rebate 16.25" x 13"
(41.3 x 33cm)
£30-£40



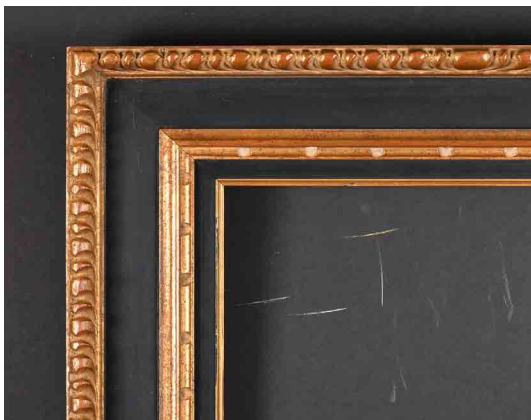
392. 20th Century French School
A Painted Carved Wood Frame, with a painted slip,
rebate 16.25" x 13" (41.3 x 33cm)
£40-£60



393. 20th Century French School
A Painted Carved Wood Frame, with a painted slip, rebate 16.25" x
13" (41.3 x 33cm)
£60-£80



394. Early 19th Century English School
A Darkwood Frame, rebate 16" x 13" (40.6 x 33cm)
£50-£80



395. 20th Century European School
A Black and Gilt Composition Frame, rebate 16" x 13" (40.6 x 33.1cm)
£50-£80



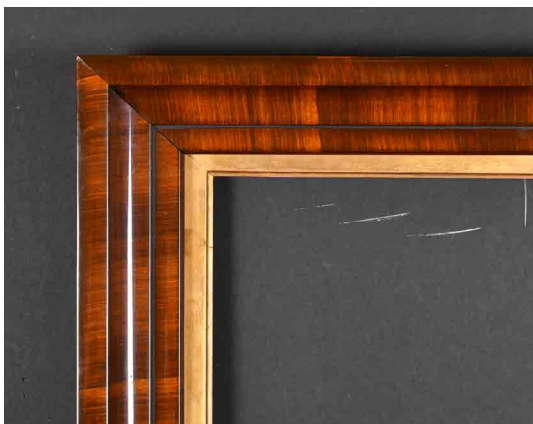
396. 20th Century French School
A Painted Composition Frame, rebate 16" x 12" (40.6 x 30.5cm)
£50-£80



397. Early 19th Century English School
A Painted Composition Frame, with an oval slip, rebate 15.75" x 13.25"
(40 x 33.6cm)
£50-£80



398. 19th Century English School
A Gilt Composition Frame, with swept centres and corners,
rebate 15.25" x 11" (38.7 x 27.9cm)
£50-£80



399. 20th Century English School
A Painted Darkwood Frame, with a gilt slip, rebate 15" x 9.75"
(38.1 x 24.8cm)
£50-£80



400. 20th Century French School
A Painted Composition Frame, rebate 14.5" x 12" (36.8 x 30.5cm)
£50-£80



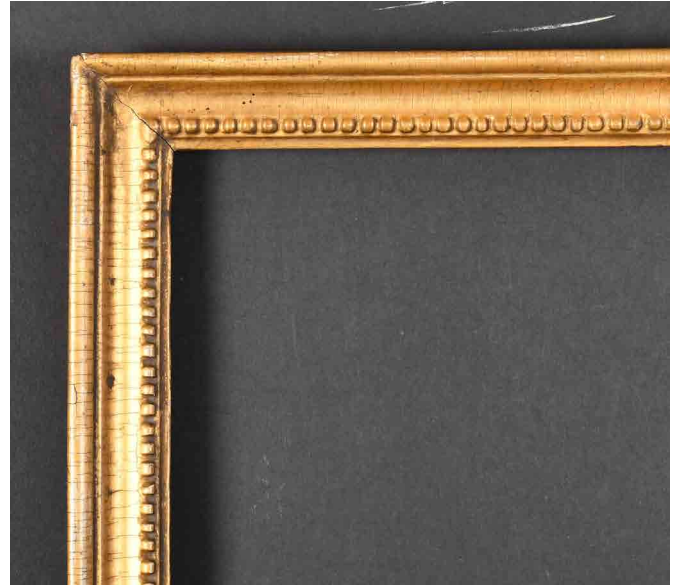
401. 19th Century European School
A Pair of Painted Composition Frames, rebate 14" x 11" (35.5 x 27.9cm) (2)
£40-£60



402. 19th Century English School
A Gilt Composition, with swept and pierced centres and corners
and inset glass, rebate 14" x 10.5" (35.5 x 26.7cm)
£40-£60



403. 20th Century French School
 A Louis Style Gilt Composition Frame, with swept centres and corners and a fabric slip, rebate 13.75" x 9.5" (34.9 x 24.2cm) without slip, rebate 16" x 11.75" (40.6 x 29.8cm)
 £60-£80



404. Early 19th Century English School
 A Gilt Composition Frame, rebate 13.5" x 9.5" (34.3 x 24.2cm)
 £50-£80



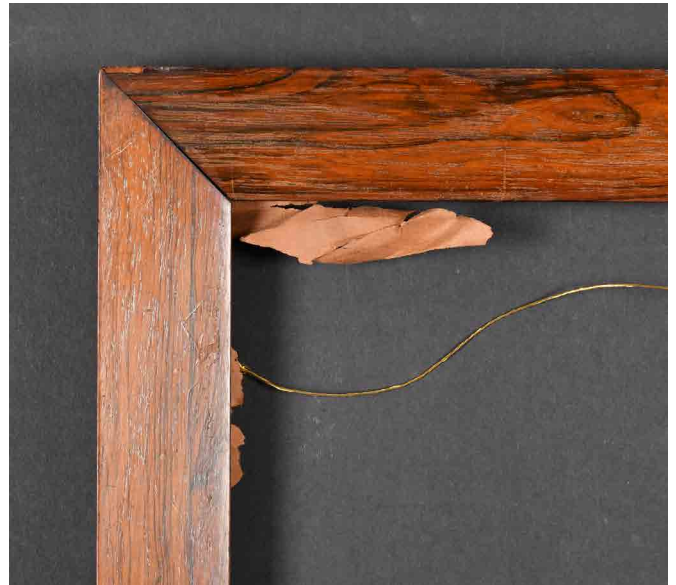
405. 20th Century European School
 A Silver and Painted Composition Frame, rebate 13.5" x 7.25" (34.3 x 18.4cm)
 £40-£60



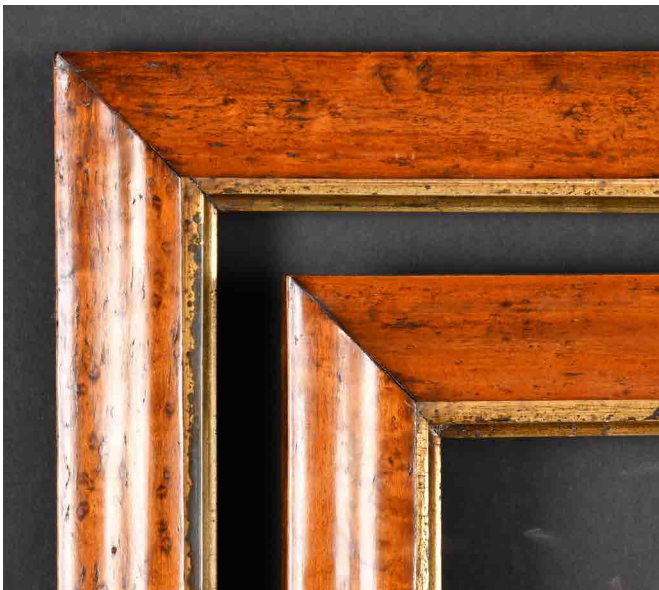
406. 19th Century English School
 A Near Pair of Gilt Composition Frames, rebate 13.5" x 11.5" (34.2 x 29.2cm) (2)
 £100-£200



407. 19th Century Italian School
A Carved Giltwood Frame, rebate 12.25" x 5.75" (31.1 x 14.6cm)
£60-£80



408. 19th Century English School
A Wooden Frame, rebate 11.75" x 8.75" (29.8 x 22.2cm)
£40-£60

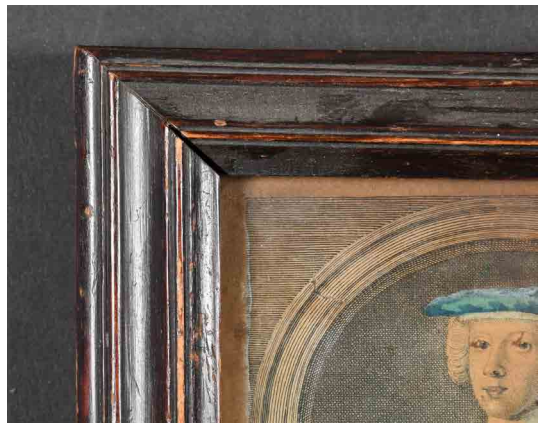


409. 19th Century English School
A Pair of Maple Frames with gilt slips, rebate 10" x 7" (25.4 x 17.8cm) (2)
£60-£80

410. 20th Century European School
A Pair of Ornate Glass and Gilt Mirror Frames,
rebate 9.5" x 7" (24.2 x 17.8cm) (2)
£150-£200



411. Early 19th Century English School
A Gilt Composition Frame, with inset glass, rebate 7" x 5.75"
(17.8 x 14.6cm)
£30-£40



412. Late 18th Century English School
A Pearwood Frame, with inset print and glass,
rebate 5.75" x 4" (14.6 x 10.2cm)
£50-£80



413. 19th Century English School
A Gilt Composition Frame with swept corners, rebate 5" x 4"
(12.7 x 10.2cm)
£50-£70



414. Early 19th Century English School
A Pair of Miniature Frames, with metal slips and inset silhouettes,
Oval rebate 3.4" x 2.6" (8.5 x 7cm) (2)
£50-£80



415. 19th-20th Century English School
 A collection of Twenty Nine carved wood frame moulds (29)
 £300-£500



416. 19th-20th Century English School
 A collection of Twenty Five carved wood frame moulds (25)
 £300-£500



417. 19th-20th Century English School
 A collection of Twenty Three carved wood frame moulds (23)
 £300-£500



418. 19th-20th Century English School
 A collection of Twenty Three carved wood frame moulds (23)
 £300-£500



419. 19th-20th Century English School
 A collection of Fifteen carved wood frame moulds (15)
 £300-£500



420. 19th-20th Century English School
 A collection of Seventeen carved wood frame moulds (17)
 £300-£500

Forthcoming Fine Paintings & Frames Sale

9th July 2026



Consign to our sales:

No commission or illustration charges

Just £15 (+VAT) per lot and 1.5% (+VAT) loss and damage waiver

Explanation of Catalogue Terms

The forename(s) (or asterisks where not known) and surname of the artist indicates, in our opinion, an original work by the artist named. The initials of the forename(s) and the surname of the artist indicates in our opinion a work of the period of the artist which may be wholly or in part his/her work.

'Attributed to...'	In our opinion probably a work by the artist, but with less certainty as to authorship in whole or part.
'Studio of ...'	In our opinion a work by an unknown artist in the studio of the artist, possibly under the artist's direction.
'Circle of ...'	In our opinion a work of the period, by an unknown artist with the artist's influence.
'Style of ...'	In our opinion a work at a later date, by an unknown artist following the artist's style.
'Follower of ...'	In our opinion a work at a much later date, by an unknown artist following the artist's style.
'Manner of ...'	In our opinion a work at an unknown date, by an unknown artist following the artist's style.
'After ...'	In our opinion a work at a later date, by an unknown artist copying a work of the artist.
'Signed, Dated & Inscribed'	In our opinion the signature, date and inscription are from the hand of the artist.
'Highlighted Signature'	In our opinion the signature is/are from the hand of the artist, in whole or part, that may have been restored.
'Bears a Signature'	In our opinion the signature is not by the artist and has been added by another hand/hands at a later date.
'Oil Painting'	In our opinion is painted in oils or acrylic.
'Mixed Media'	In our opinion a mixture or combination of part, some or all of the following - Oil, Watercolour, Gouache, Pencil, Ink or Print.

Consign to our 2026 sales

**No commission or illustration charges
Just £15 (+VAT) per lot and 1.5% (+VAT)
loss and damage waiver**

AUCTION INFORMATION

BUYER'S FEES - All purchases are subject to a buyer's premium, which is charged per lot at 25% of the hammer price plus VAT at the current rate of 20% will be added to the buyer's premium of all lots.

CONDITION REPORTS - Condition reports can be requested by contacting us at info@parkerfineartauctions.com or calling us on 01252 20 30 20. Bidders must satisfy themselves as to the condition of each lot. A Condition Report is an honest expression of our opinion and not a statement of fact and is provided as a service to the Seller. Requests for condition reports must be submitted 24 hours before the start of the sale. The absence of a condition report in this catalogue does not imply there are no imperfections in the works.

REQUEST FOR IMAGES - More images can be found in the online catalogue. Requests for additional images of items in the sale can be made up to 24 hours before the start of the sale.

Please note the colours portrayed in the catalogue, and in additional images, are the best attempt at a likeness but cannot be confirmed as identical to the true colours.

Please note that, owing to the recent introduction of money laundering regulations clients wishing to bid in this auction will be asked to provide two forms of identification. This applies to new and existing clients.

ATTENDING THE AUCTION - If intending to buy you are required to register your name and details at our reception desk on the day of the auction. You will then be allocated a bidding number, which you use when bidding for an item.

ABSENTEE BIDS - You can place an absentee bid, and the auctioneer will bid on your behalf to obtain the lot as cheaply as possible as allowed by other bids and reserves. To make an absentee bid you can complete a bidding form at reception, telephone us, or send us your bid by email. You should give us the maximum hammer price you are prepared to pay, remembering to take into account the buyer's premium and any taxes and charges payable on top of the hammer price.

Absentee bids must be submitted by close of business on the day before the sale. If identical bids are submitted, the person who bid first will take precedence.

TELEPHONE BIDDING - You can take part in the sale by bidding over the telephone. Telephone lines must be booked by close of business on the day before the sale and are allocated on a first-come-first-served basis.

ONLINE BIDDING - Bidding can be done through EasyLive Auctions or the-saleroom.com. Bidding on these sites is directly through the relevant platforms and will incur extra commission charges. Please refer to the individual bidding websites for their individual terms and conditions.

PAYMENT - Payment will be accepted, if you are a successful bidder, by bank transfer direct into our bank account, by debit card issued in the name of the Buyer by a UK bank and registered to a UK billing address, by all major UK issued credit cards issued in the name of the Buyer and registered to a UK billing address (up to £1000), or in cash up to £8,000 (subject to relevant money laundering regulations). The name of the bank account holder should match the name of the buyer. Payment may also be made by sterling personal cheques drawn on a UK bank account and made payable to 'Parker Fine Art Auctions Ltd', however Lots paid for by this method cannot be collected until your cheque has cleared. Payment can be made and purchases collected during the auction. All accounts must be settled within 14 days of the sale. Accounts not paid within 14 days will automatically be subject to an interest charge (not exceeding 1.5% per month on the total amount due). Monies from wire transfers and cheques must be cleared into our account for 24 hours before items may be collected.

If the buyer has failed to collect within a period of two months (from sale date), Parker Fine Art Auctions reserve the right to re-enter the uncollected items through auction, to recover the cost of storage and associated costs. At this time the buyer relinquishes all claims to ownership and any right to financial compensation.

COLLECTION - Before being able to collect your purchases you are required to pay the hammer price, plus the applicable charges, and obtain a receipt acknowledging payment.

Once payment for lots has been received collection or transportation of purchased lots must be made within 14 days of the sale to avoid storage charges.

We are open for collections Monday – Friday between 9am and 5pm, or by arrangement.

STORAGE - Storage charges will be levied on all lots not collected within 14 days of the sale of £5 plus VAT per lot per day.

DELIVERY - If you are arranging your own professional collection and delivery, please ensure the lot has been paid for and the transport company has full details of the items to be collected, and we have received an authorisation note.

In some circumstances some very small items may be posted for a fee, but this will be at the Auctioneer's discretion and will be subject to your own Insurance and Liability. Please contact us if you would like details of local shipping companies.

For Full terms and conditions please go to our website www.parkerfineartauctions.com

IMPORTANT NOTICES FOR JEWELLERY BUYERS

DAMAGE, RESTORATION, ALTERATION

Although every effort is made to note any damage, restoration or alterations, the absence of any such information in catalogue descriptions does not imply the lot is in perfect condition and free for any such defects. Potential Bidders should satisfy themselves as to the condition of any lot prior to bidding.

ENHANCEMENT

Potential bidders should be aware that many coloured gems have been historically treated by a variety of methods to improve their appearance, both in terms of colour and transparency. Rubies and sapphires are routinely heat treated, emeralds are enhanced through the use of coloured and transparent oils and resins, and jadeite is routinely stained. These treatments, and others including irradiation and coating, are generally accepted by the jewellery trade as standard practice. Although most treatments are considered to be permanent, those gemstones which have been oiled may need to be re-treated to maintain their appearance. Any such treatments affect the market value of coloured gemstones, and Parker Fine Art Auctions pre-sale estimates published in the catalogue assume that all gemstones, unless otherwise stated in the catalogue, may have been enhanced. Parker Fine Art Auctions may obtain Gemmological Reports from a recognised laboratory where appropriate detailing any enhancements, or lack of, for certain gemstones, and such reports may be obtained for Potential Bidders prior to the sale, provided such requests are made at least three weeks before the sale, and that the requesting party has prepaid for such a report. However it is not possible for Parker Fine Art Auctions to obtain reports for every stone offered in the sale.

In the absence of a gemmological laboratory report, it is not possible for Parker Fine Art Auctions to make any comment on the possibility that any gemstone in any lot may have been subject to enhancement.

WEIGHTS

All gram weights have been obtained using an electronic balance, but weights stated in the catalogue are approximate and for guidance only, and potential bidders should satisfy themselves as to their accuracy.

'...approximately 1.20 carats total,...' all such stone weights are estimated using standard equipment and formulae, and are subject to the limitations imposed by the mount.

'...weighing 1.20 carats,...' where the description reads as such, the stones in question have been removed from the mount and weighted using an electronic balance.

IMPORTANT NOTICES FOR WATCH BUYERS

All Lots are sold as seen, and the absence of any reference to the condition of a watch does not imply the lot is in good condition and without defects, repairs or restorations. Most watches have been repaired in the course of their normal lifetime and may now incorporate parts not original to them. We do not undertake any inspection of any watches prior to any Sale. We make no representation or warranty that any watch is in working order. As watches often contain fine and complex mechanisms, Potential Bidders should be aware that a general service, change of battery or further repair work, for which they are solely responsible, may be necessary.

DAMAGE, RESTORATION, ALTERATION

Although every effort is made to note any damage, restoration or alterations, the absence of any such information in catalogue descriptions does not imply the lot is in perfect condition and free from any such defects. Potential Bidders should satisfy themselves as to the condition of any lot prior to bidding. All watches are serviced from time to time, and Parker Fine Art Auctions are unable to guarantee that the working parts of any watch movement, glass or crystal, winding crowns, watch bracelet, strap or buckle are the manufacturers' original parts, unless otherwise stated in the catalogue description. We are unable to make any representation in our catalogue descriptions or condition reports as to the authenticity of such parts. Parker Fine Art Auctions are unable to make any representation, nor make any comment on, the authenticity of diamonds, or other gemstones, set into watch dials, bezels, cases and bracelets.

AUTHENTICATION

All watch movements have been inspected by Parker Fine Art Auctions' specialists, and we have verified all inventory and movement numbers. For the information of Potential Bidders, all inventory and movement numbers are listed in the catalogue description for the relevant lot.

IMPORT/EXPORT RESTRICTIONS

There may be Import Restrictions into some territories outside the United Kingdom placed on certain watch brands, or on the importation of watches with straps composed of animal skins which may fall under CITES Regulations. It is the sole responsibility of the buyer to comply with all Export/Import regulations and potential bidders are strongly recommended to check with their shipping agent as to any such regulations that may apply to any lot. Parker Fine Art Auctions are not shippers and are unable to offer any advice regarding such regulations.

CONDITION REPORTS

Parker Fine Art Auctions condition reports will identify whether a watch functions at the time of cataloguing, and suggest possible, but not comprehensive, restoration work that may need to be carried out for the watch to function properly. Parker Fine Art Auctions are unable to test watches for accuracy or running to time, and we cannot guarantee that any watch will function when purchased from us.

As we have examined all watch movements by removing the case backs, we cannot guarantee that water resistant watches will remain water resistant following purchase from us. Parker Fine Art Auctions recommend that any watch purchased from us is subsequently overhauled by a competent watchmaker to ensure proper functioning.

Conditions of Sale for Public Auctions

Parker Fine Art Auctions Ltd carries out business with Bidders, Buyers and Sellers on the following conditions and on such terms, conditions and notices as may be referred to herein. All Bidders, Buyers and others participating in a public auction accept that these terms apply to the exclusion of any terms and conditions contained in any of those person's own documents even if the same purport to provide that they or some other terms prevail. Any particular public auction and/or any particular lot in an auction may be subject to different or additional terms which will be published in our auction catalogue online.

The Buyer's attention is particularly drawn to clause 24 (consumers) and clause 23 (non-consumers), which set out the extent of the Auctioneer's and the Seller's liability to the Buyer.

Please read these Conditions together with our "Information for Buyers" document, which provides additional information and terms applicable to our auctions.

1. DEFINITIONS

In these Conditions:

- (a) "Auction Terms and Conditions" means these Conditions, the Terms of Consignment and any other terms applicable to auctions conducted by the Auctioneer and notified to Buyers, Bidders and/or Sellers (as applicable);
- (b) "Auctioneer", "we", "us" or "our" etc. means the firm of Parker Fine Art Auctions Ltd or its authorised auctioneer, as appropriate;
- (c) "Conditions" means these Conditions of Sale for Public Auctions (which include the terms set out in "Information for Buyers");
- (d) "deliberate forgery" means an imitation made with the intention of deceiving as to authorship, origin, date, age, period, culture or source but which is unequivocally described in the catalogue as being the work of a particular creator and which at the date of the sale had a value materially less than it would have had if it had been in accordance with the description;
- (e) "hammer price" means the level of bidding reached (at or above any reserve) when the auctioneer brings down the hammer;
- (f) "Information for Buyers" means the document named Information for Buyers at Public Auction containing additional terms and information for Buyers available on our website at www.parkerfineartauctions.com;
- (g) "Lots" any items or group of items offered for sale by us as agents for the Seller;
- (h) "Seller" means any person that appoints us as their agent to sell Lots on their behalf;
- (i) "Terms of Consignment" means the stipulated terms and rates of commission on which we accept instructions from Sellers or their agents including those terms set out in the document named "Terms of Consignment for Public Auctions" which can be found on our website or are available upon request;
- (j) "Total Amount Due" means the hammer price in respect of the Lot sold together with any premium, Value Added Tax chargeable and any additional charges payable by a defaulting buyer under these Conditions;
- (k) "Sale Proceeds" means the net amount due to the Seller, being the hammer price of the lot sold less commission at the stated rate, Value Added Tax chargeable and any other amounts due to us by the seller in whatever capacity and however arising; "you", "your", etc. refer to the buyer as identified in Clause 3.4;
- (l) The singular includes the plural and vice versa as appropriate; and
- (m) A person includes a natural person, corporate or unincorporated body (whether or not having separate legal personality).

2. FORMATION OF CONTRACT

A contract for the sale and purchase of a Lot shall come into existence between the Seller and the Buyer on these Conditions upon acceptance by the Auctioneer of a bid by the Buyer.

3. BIDDING PROCEDURES AND THE BUYER

- 3.1 Bidders are required to register their particulars before bidding by completing a sale registration form and to satisfy any security arrangements before entering the auction room to view or bid.
- 3.2 Under the money laundering regulations in force we are required to verify the identity of all customers we transact with as well as any beneficiaries on behalf of whom they may transact. Customers who are unable to or refuse to supply required identification documents and proof of address may not be able to bid at our auctions. Copies of

customer due diligence checks will be stored for as long as it is necessary to satisfy legal requirements in an appropriate storage facility which for the avoidance of doubt may include storage solely in electronic form.

- 3.3 The maker of the highest bid accepted by the auctioneer conducting the sale shall be the buyer at the hammer price and any dispute about a bid shall be settled at the Auctioneer's absolute discretion by reoffering the Lot during the course of the auction or otherwise. The auctioneer shall act reasonably in exercising this discretion. The Auctioneer shall rule the bidding and no bid may be retracted.

- 3.4 The Buyer is the person who is successful in purchasing a Lot or Lots in accordance with these Conditions. Purchases made on behalf of a third party are the responsibility of the Buyer in the room. The Auctioneer reserves the right to bid on behalf of the Seller for any Lot and to withdraw, consolidate or divide any Lot or Lots.

- 3.5 Bidders shall be deemed to act as principals (i.e. not on behalf of or as the agent of any other person).

- 3.6 Our right to bid on behalf of the Seller is expressly reserved up to the amount of any reserve below the bottom estimate and the right to refuse any bid is also reserved.

4. INCREMENTS

Bidding increments shall be at the Auctioneer's sole discretion.

5. THE PURCHASE PRICE

The purchase price payable for a Lot is the hammer price plus a buyer's premium thereon of 25% plus VAT on the premium at the rate imposed by law and is payable in accordance with clause 7.

6. VALUE ADDED TAX.

Value Added Tax on the hammer price is imposed by law on all items affixed with a dagger or double dagger symbol. Value Added Tax is charged at the appropriate rate prevailing by law at the date of sale and is payable by buyers of relevant Lots. (Please refer to "Information for Buyers" for a brief explanation of the VAT position).7.

PAYMENT

- 7.1 Immediately a Lot is sold you will:

- (a) give to us, if requested, proof of identity, and
- (b) pay to us the total amount due in pounds sterling.

- 7.2 Any payments by you to us may be applied by us towards any sums owing from you to us on any account whatever without regard to any directions of you or your agent, whether expressed or implied.

- 7.3 In order to comply with money laundering regulations we reserve the right to require proof of source of funds and/or confirmation of the nature and source of wealth for all receipts of monies from clients directly or from third parties for payments on behalf of clients. The completion of the sale of a Lot will be postponed or cancelled at our discretion if further time is needed for investigation, or if you are in breach of your warranties as a buyer, or if we consider the sale to be unlawful or in any way cause liabilities or be detrimental to either us or the Seller.

8. TITLE AND COLLECTION OF PURCHASES

- 8.1 The ownership of any Lots purchased shall not pass to you until you have made payment in full in cleared funds to us of the total amount due.

- 8.2 You shall at your own risk and expense take away any lots that you have purchased and paid for no later than 14 working days following the day of the auction or upon the clearance of any cheque used for payment after which you shall be responsible for any removal, storage and insurance charges.

- 8.3 No purchase can be claimed or removed until it has been paid for.

9. REMEDIES FOR NON-PAYMENT OR FAILURE TO COLLECT PURCHASES

- 9.1 If any Lot is not paid for in full and taken away in accordance with these Conditions, or if there is any other breach of these Conditions, we, as agent for the Seller and on our own behalf, shall at our absolute discretion and without prejudice to any other rights we may have, be entitled to exercise one or more of the following rights and remedies:

- (a) to proceed against you for damages for breach of contract;
- (b) to rescind the sale of that Lot and/or any other Lots sold by us to you;
- (c) to resell the Lot (by auction or private treaty) in which case you shall be responsible for any resulting deficiency in the total amount due (after

- crediting any part payment and adding any resale costs). Any surplus so arising shall belong to the Seller;
- (d) to remove, store and insure the Lot at your expense and, in the case of storage, either at our premises or elsewhere;
- (e) to charge interest at a rate not exceeding 1.5% per month on the total amount due to the extent it remains unpaid for more than fourteen working days after the sale;
- (f) to retain that or any other Lot sold to you until you pay the total amount due;
- (g) to reject or ignore bids from you or your agent at future auctions or to impose conditions before any such bids shall be accepted; or
- (h) to apply any proceeds of sale of other Lots due or in future becoming due to you towards the settlement of the total amount due and to exercise a lien (that is a right to retain possession of) over any of your property in our possession for any purpose until the debt due is satisfied.
- 9.2 We shall, as agent for the Seller and on our own behalf pursue these rights and remedies only so far as is reasonable to make appropriate recovery in respect of breach of these Conditions
- 10. THIRD PARTY LIABILITY**
- 10.1 All bidders, buyers and other members of the public on our premises are there at their own risk and must note the lay-out of the accommodation and security arrangements. Accordingly neither the auctioneer nor our employees or agents shall incur liability for death or personal injury or for the safety of the property of persons visiting prior to or at a sale (except in each case as may be required by law by reason of our negligence)
- 11. COMMISSION BIDS**
- 11.1 Whilst prospective buyers are strongly advised to attend the auction and are always responsible for any decision to bid for a particular Lot and shall be assumed to have carefully inspected and satisfied themselves as to its condition and authenticity, we will if so instructed clearly and in writing execute bids on their behalf. Neither the auctioneer nor our employees or agents shall be responsible for any failure to do so.
- 11.2 Where two or more commission bids at the same level are recorded we reserve the right in our absolute discretion to prefer the first bid so made.
- 12. WARRANTY OF TITLE AND AVAILABILITY**
- 12.1 The Seller warrants to the auctioneer and you that the Seller is the true owner of the property consigned or is properly authorised by the true owner to consign for sale and is able to transfer good and marketable title to the property free from any third party claims.
- 12.2 We are acting as the agent of the Seller only and give no warranty as to the Seller's title to the Lot.
- 12.3 Save as expressly set out above, all other warranties, conditions or other terms which might have effect between the Seller and you, or us and you, or be implied or incorporated by statute, common law or otherwise are excluded to the fullest extent permitted by law.
- 13. TERMS OF SALE**
- The Seller and the Buyer acknowledge that Lots are sold subject to the stipulations of these Conditions (including the Information For Buyers) in their entirety and on the Terms of Consignment as notified to the Seller at the time of the entry of the Lot.
- 14. DESCRIPTIONS AND CONDITION**
- 14.1 Whilst we seek to describe Lots accurately, it may be impractical for us to carry out exhaustive due diligence on each Lot. Bidders are given ample opportunities to view and inspect before any sale and they (and any independent experts on their behalf) must satisfy themselves as to the accuracy of any description applied to a Lot. Bidders also bid on the understanding that, inevitably, representations or statements by us as to authorship, genuineness, origin, date, age, provenance, condition or estimated selling price involve matters of opinion. We undertake that any such opinion shall be honestly and reasonably held and accept liability for opinions given negligently or fraudulently.
- 14.2 Subject to the foregoing neither we the auctioneer nor our employees or agents nor the Seller accept liability for the correctness of such opinions and all conditions, attributions and warranties, whether relating to description, condition or quality of lots, express, implied or statutory, are hereby excluded.
- 14.3 We are not liable for damage to gilded picture frames, plaster picture frames or picture frame glass. If the Lot is, or becomes dangerous, we may dispose of it without notice to you in advance in any manner we see fit and will be under no liability for doing so. We shall not be liable for any damage to any Lot arising during the viewing, during the sale, or after the sale.
- 14.4 We act as agents only. Each Prospective Buyer by making a bid for a Lot acknowledges that they have satisfied themselves fully as to the attribution and condition of the Lot. Pictures have not been removed from their frames unless specifically mentioned in the Condition Report (as in the event the item is unsold it must be returned to the Seller in the condition it was received by us). This Condition is subject to deliberate forgeries (clause 17).
- 14.5 Private treaty sales made under these Conditions are deemed to be sales by auction for purposes of consumer legislation.
- 15. TRANSFER OF RISK.**
- 15.1 The risk in the Lot shall pass to the Buyer upon completion of the Sale by the Auctioneer.
- 15.2 We are not responsible for the correct description, genuineness or authenticity of any Lot as per these Conditions. The Buyer is deemed to have inspected each Lot and satisfied himself/herself to the condition.
- 16. OWNERSHIP OF THE LOT**
- Title to the Lot purchased will not pass to the Buyer until the Buyer has paid us in full and cleared funds the total amount due pursuant to these Conditions and we have applied such payment to the Lot.
- 17. FORGERIES**
- 17.1 Notwithstanding the preceding Condition, any Lot which proves to be a deliberate forgery (as defined) may be returned to us by you within 21 days of the auction provided it is in the same condition as when bought, and is accompanied by particulars identifying it from the relevant catalogue description and a written statement of defects. If we are satisfied from the evidence presented that the Lot is a deliberate forgery we shall refund the money paid by you for the Lot including any buyer's premium unless:
- the catalogue description reflected the accepted view of scholars and experts as at the date of sale; or
 - you personally are not able to transfer a good and marketable title to us,
- and in the event of clause 17.1 (a) or 17.1 (b) applying you shall have no rights under this condition.
- 17.2 The right of return provided by this clause 17 is additional to any right or remedy provided by law or by these Conditions.
- 18. PRIVACY NOTICE.**
- We will hold and process any personal data in relation to you in accordance with our current privacy policy, a copy of which is available on our website parkerfineartauctions.com
- 19. GENERAL**
- 19.1 We shall have the right, at our discretion, to refuse admission to our premises or attendance at our auctions by any person.
- 19.2 Any right to compensation for losses liabilities and expenses incurred in respect of and as a result of any breach of these Conditions and any exclusions provided by them shall be available to the Seller and/or the Auctioneer as appropriate.
- 19.3 Such rights and exclusions shall extend to and be deemed to be for the benefit of employees and agents of the Seller and/or the auctioneer who may themselves enforce them.
- 19.4 Special terms may be used in catalogue descriptions of particular classes of items in which case the descriptions must be interpreted in accordance with any glossary appearing in the catalogue.
- 20. NOTICES**
- Any notice to any buyer, seller, bidder or viewer may be given by first class mail or email in which case it shall be deemed to have been received by the addressee 48 hours after posting or in the event of email upon actual receipt of such email.

21. **NO WAIVER**
Any indulgence extended to bidders, buyers or sellers by us notwithstanding the strict terms of these Conditions or of the Terms of Consignment shall affect the position at the relevant time only and in respect of that particular concession only; in all other respects these Conditions shall be construed as having full force and effect.
22. **LIABILITY**
Nothing in these Conditions shall limit any liability which cannot legally be limited, including liability for:
(a) death or personal injury caused by negligence;
(b) fraud or fraudulent misrepresentation;
(c) breach of the terms implied by section 12 of the Supply of Goods Act 1979 (title and quiet possession) however attention is drawn to clause 12.2.
23. **LIMITATION OF LIABILITY TO NON-CONSUMERS**
(This clause 23 applies only to non-Consumers)
- 23.1 Subject to clause 22, and unless you are an individual purchasing or selling the Lot for purposes which are wholly or mainly outside your trade, business, craft or profession (**Consumer**), our total liability to either the Buyer of the Seller (as appropriate) shall not exceed the value of the Lot sold by the Seller to the Buyer. The following types of loss are wholly excluded by us:
(a) loss of profits;
(b) loss of sales or business;
(c) loss of agreements or contracts;
(d) loss of anticipated savings;
(e) loss of or damage to goodwill, and
(f) indirect or consequential loss.
- 23.2 Subject to clause 22, all conditions, warranties and other terms which might otherwise be implied by statute, common law or the law of equity, including without limitation the terms implied by sections 13 to 15 of the Sale of Goods Act 1979, are, to the fullest extent permitted by law, expressly excluded.
- 24.1 **LIMITATION OF LIABILITY TO CONSUMERS**
(This clause 24 applies only to Consumers)
- 24.1 Consumers are reminded that we act only as an agent of the Seller and are not the supplier of the Lots.
- 24.2 If the Auctioneer or the Seller fails to comply with these Conditions, it or they shall be responsible for loss or damage you suffer that is a foreseeable result of its or their breach of these Conditions or its or their negligence, but neither the Auctioneer nor the Seller shall be responsible for any loss or damage that is not foreseeable. Loss or damage is foreseeable if they were an obvious consequence of the breach or if they were contemplated by the Agent and/or the Seller and the Buyer at the time this contract was entered into.
25. **RIGHT TO CANCEL**
- 25.1 If you purchase a Lot at a virtual auction (an auction which is held online only so that there is no possibility for you to attend the auction in person) and you are contracting as a Consumer and the Seller of a Lot is a trader, you will have a statutory right to cancel your purchase of that Lot if you change your mind for any reason. The provisions below set out your legal right to cancel in those circumstances.
- 25.2 You may cancel your purchase at any time from the date of our order confirmation up to the end of the fourteenth day after the day of collection of the lot by you or the person specified by you for collection.
- 25.3 To cancel your purchase, you must inform us of your intention to cancel it. You can do this by completing the model cancellation form which can be found on our website. If you use this method we will email you to confirm that we have received your cancellation. Alternatively, you send us your cancellation notice by any other method and then your cancellation is effective from the date you send us the email or post the letter to us.
- 25.4 If you exercise your right to cancel your purchase, you will receive a refund of the total amount due paid for the Lot in accordance with clause 7. When exercising the cancellation right, you must return the lots to us immediately at your own cost (as set out below).
- 25.5 You are entitled to a reasonable opportunity to inspect the Lots (which will include removing them from their packaging and inspecting them). At all times, you must take reasonable care of the Lots and must not let them out of your possession. They must remain in original, untouched condition. If you are in breach of your obligations to take reasonable care of the Lots in this clause 25.4, we will have a claim against you and may deduct from the refund costs incurred by us as a result of the breach.
- 25.6 This provision does not affect your statutory rights.
- 25.7 The cancellation right described in this clause 25 is in addition to any other right that you might have to reject a Lot, for instance because it is a deliberate forgery as set out in clause 17 above.
26. **EXERCISING THE RIGHT TO CANCEL**
- 26.1 Where you have validly returned a Lot to us under your right of cancellation described in clause 25, we will refund the full amount paid by you for the Lot.
- 26.2 Please note that we are permitted by law to reduce your refund to reflect any reduction in the value of the Lot, if this has been caused by your handling of the Lot in a way contrary to the conditions specified in these terms or which would not be permitted during a pre-sale exhibition held prior to an auction. If we refund you the price paid before we are able to inspect the Lot and later discover you have handled the Lot in an unacceptable way, you must pay us an appropriate amount.
- 26.3 You will be responsible for returning the Lot to us at your own cost.
- 26.4 We will process any refund due to you within the deadlines below:
(a) if you have collected the Lot but have not returned it to us: fourteen days after the day on which we receive the Lot back from you or, if earlier, the day on which you provide us with evidence that you have sent the Lot back to us; or
(a) if you have not collected the Lot or you have already returned the Lot to us: 14 days after you inform us of your decision to cancel your contract.
- 26.5 We will refund you using the same means of payment that you used for the transaction.
- 26.6 Legal ownership of a Lot will immediately revert to the Seller if we refund any such payment to you.
- 27.1 **DISPUTES**
Any dispute not herein provided for shall be settled at the sole discretion of the Auctioneer.
28. **FORCE MAJEURE**
We shall not be in breach of these Conditions nor liable for the delay in performing, or failure to perform, our obligations under these Conditions (or otherwise) if such a delay or failure results from events, circumstances or causes beyond our reasonable control.
29. **ENTIRE AGREEMENT**
These Conditions constitute the entire agreement between the parties and supersede and extinguish all previous agreements, promises, assurances warranties representations and understandings between them, whether written or oral, relating to its subject matter. Except as set out in these Conditions, no variation of these Conditions shall be effective unless it is in writing and signed by the parties (or their authorised representative).
30. **IMAGES**
Prior written consent must be sought by the buyer or any other party for the use of any images, illustrations and written materials produced by or for Parker Fine Art Auctions Ltd relating to a lot or sale, including the contents of a catalogue. Copyright for any of the aforementioned will remain the property of Parker Fine Art Auctions Ltd, subject to the provisions of the Copyright, Design and Patents Act 1988. Parker Fine Art Auctions Ltd and the seller make no representations or warranties that the buyer of a lot will acquire any copyright to other reproduction rights to it.
31. **GOVERNING LAW AND JURISDICTION**
These Conditions shall be governed by and construed in accordance with English law and the parties irrevocably submit to the exclusive jurisdiction of the English courts.



PARKER
FINE ART AUCTIONS
Hawthorn House | East Street | Farnham | Surrey | GU9 7SX

Thursday 11th June 2026

01252 20 30 20
info@parkerfineartuctions.com
parkerfineartuctions.com

