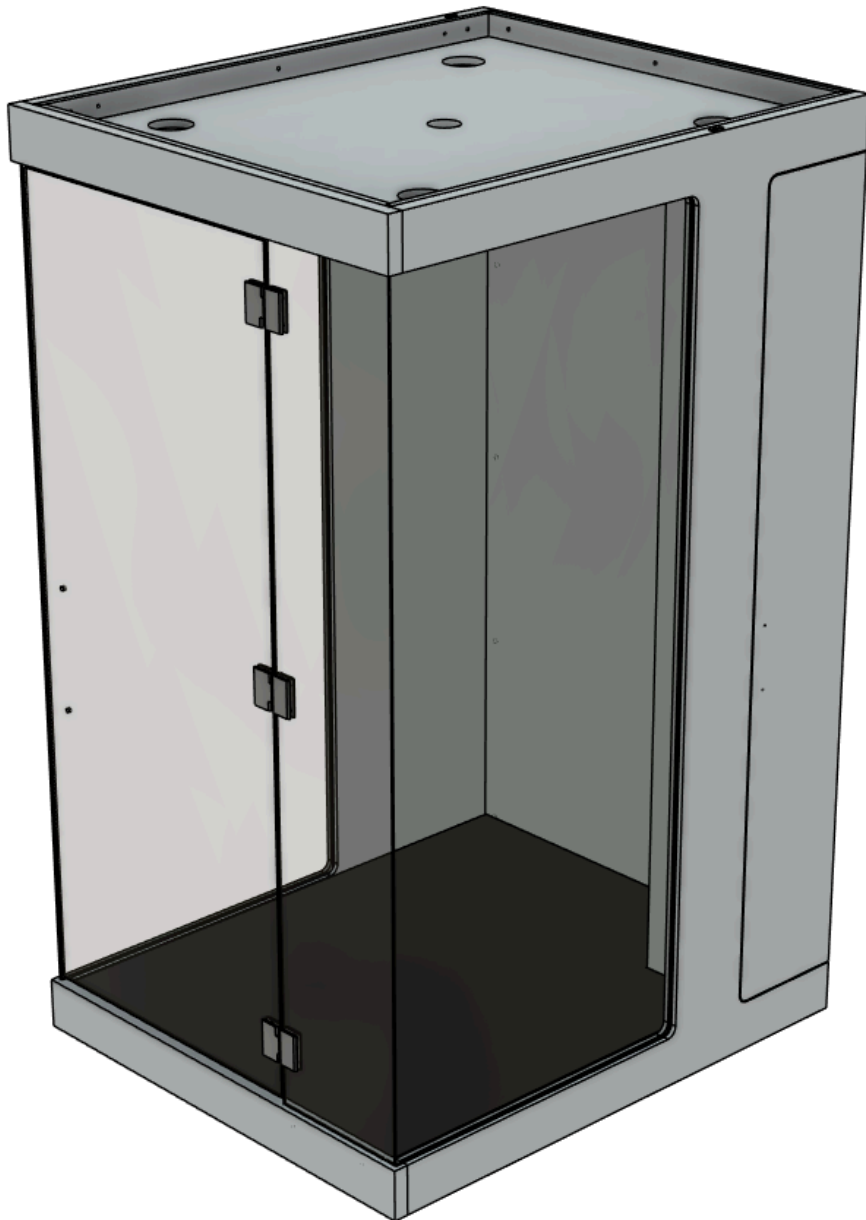




S·A·L·T
CHAMBER

The Wellness Booth

Assembly Instructions



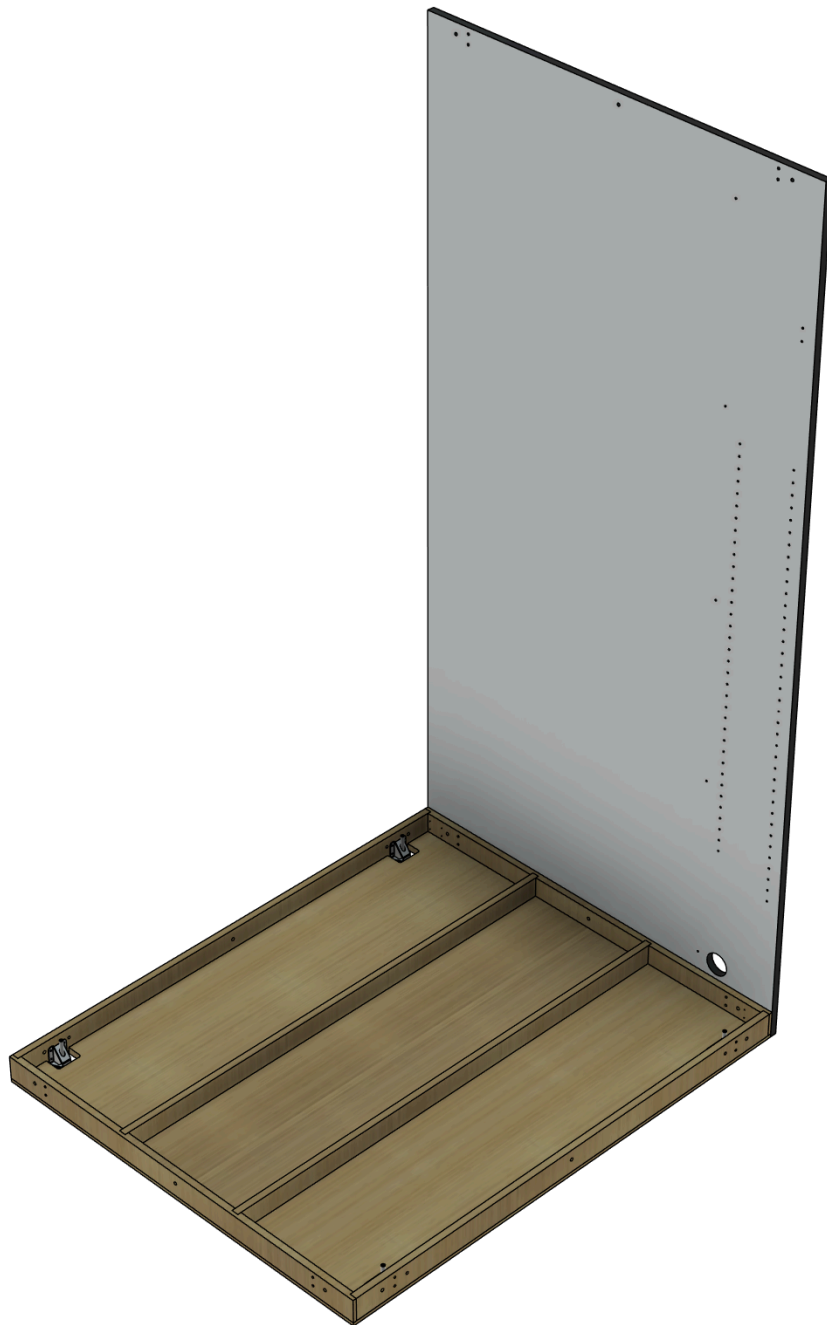
Step One: Level the Base

- Identify the short sides of the base as the front and rear of the booth.
- Ensure the slats on the base are facing up.
- Place the base in its final location.
- Level the base using the adjustable leveling legs with an allen key



Step Two: Install Rear Wall Panel

- Locate the rear wall panel. The large cable pass-through hole is at the bottom of the panel.
- Stand up the rear panel and attach it to the base using three hex screws and washers



Step Three: Assemble the Left Side Wall

- Identify the left side wall panel by the larger window.
- Thread 5 metal connecting dowels into the left side wall panel.
- Align the connecting dowels with the rear wall panel and slide the left side wall panel into place.
- Attach the left side wall panel to the base with 3 hex screws and washers.
- Insert 5 cam locks into the rear wall panel and tighten.



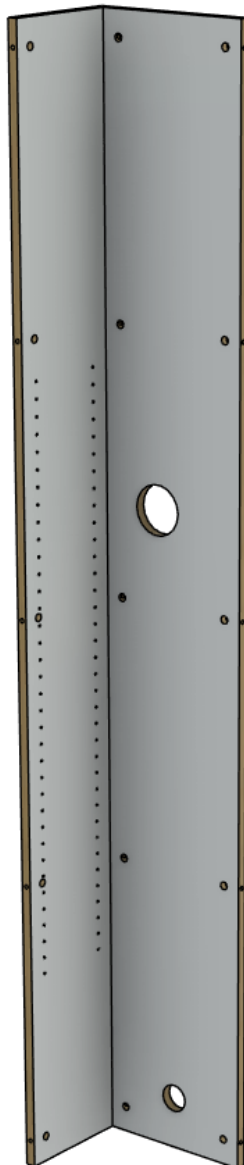
Step Four: Assemble the Right Side Wall

- Identify the right side wall panel by the smaller window and closet door opening
- Thread 2 metal connecting dowels into the right side wall panel.
- Align the connecting dowels with the rear wall panel and slide the right side wall panel into place.
- Attach the right side wall panel to the base with 3 hex screws and washers.
- Insert 2 cam locks into the rear wall panel and tighten.



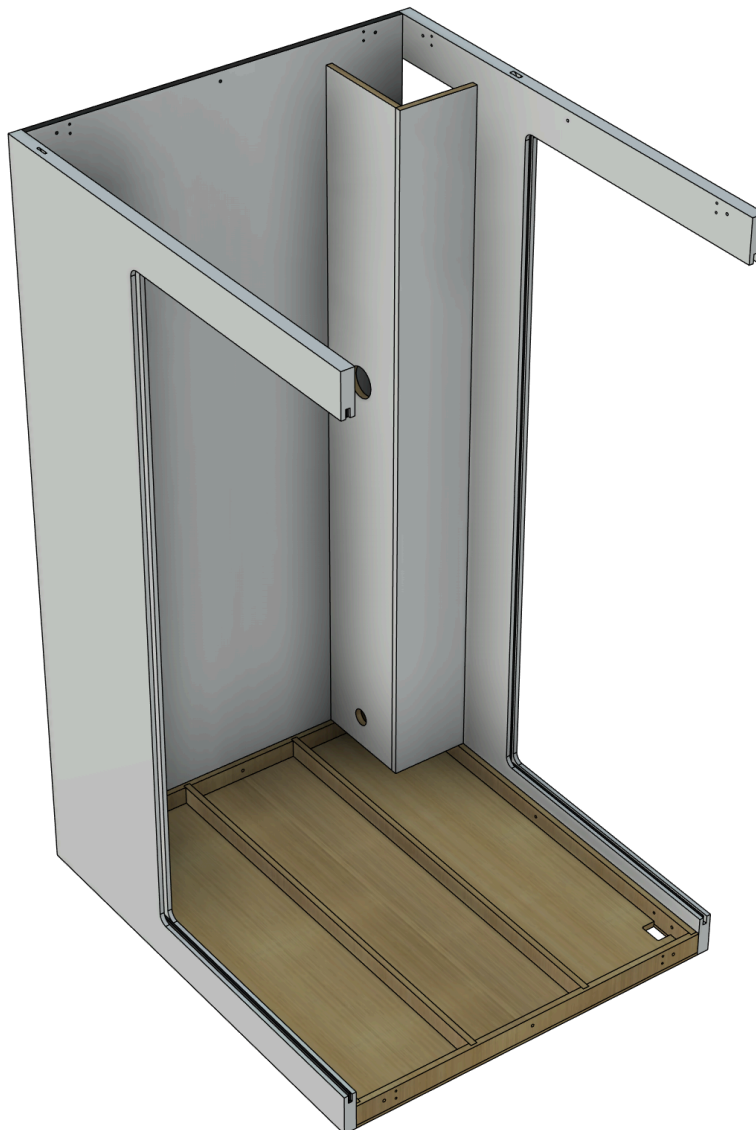
Step Five: Build the Closet

- Identify the rear wall of the closet by the halo generator hole and the left wall of the closet by the small shelf mounting holes.
- Thread 5 metal connecting dowels into the left wall of the closet.
- Align the dowels and connect the left wall to the rear wall of the closet at a right angle.
- Install 5 cam locks into the rear wall and tighten.



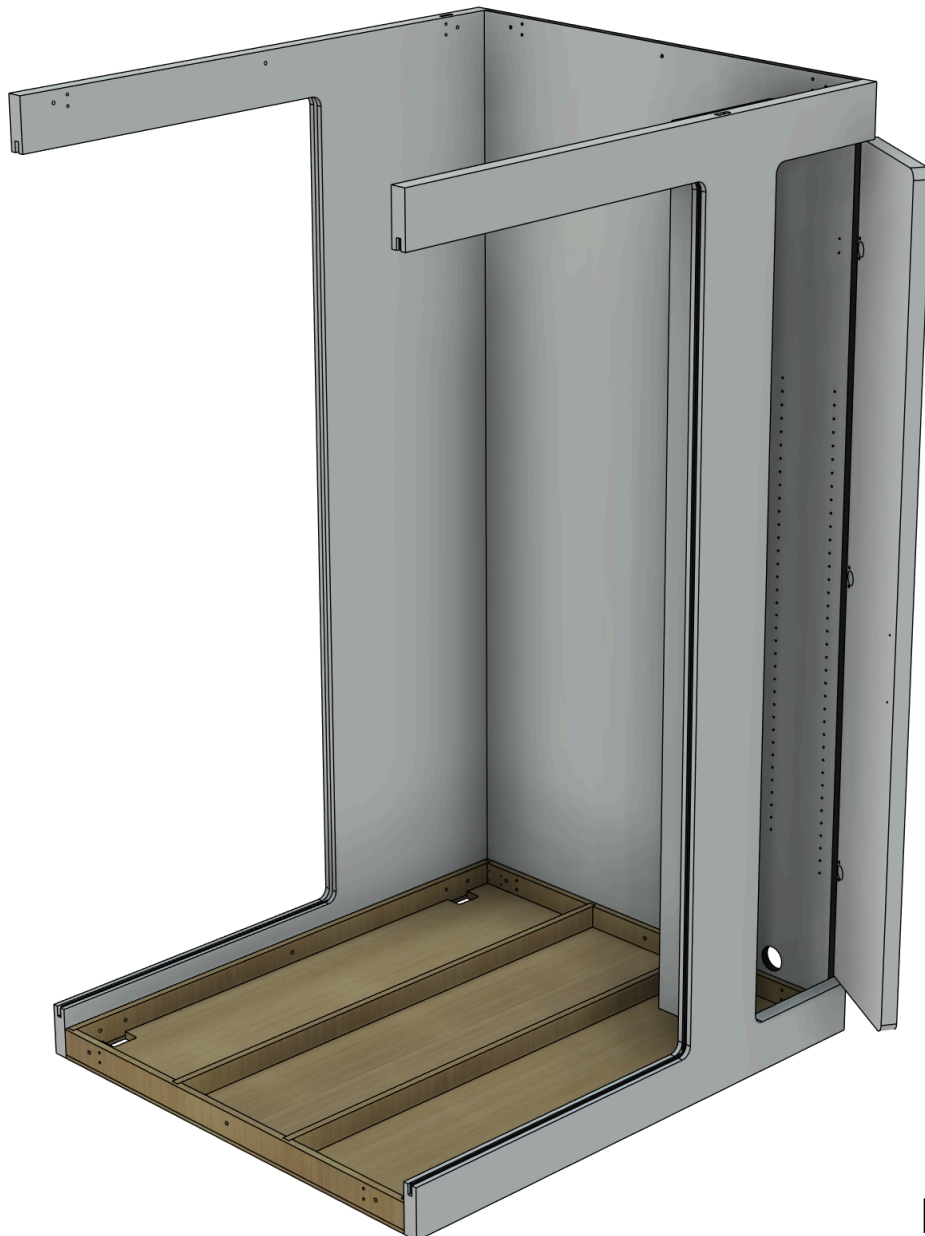
Step Six: Install the Closet

- Thread 5 metal connecting dowels into the right side wall panel, next to the closet opening.
- Align the connecting dowels with the left wall of the closet and slide the closet assembly into place.
- Use 5 hex screws and washers to secure the closet assembly to the rear wall panel.
- Install 5 cam locks into the left closet wall panel and tighten.



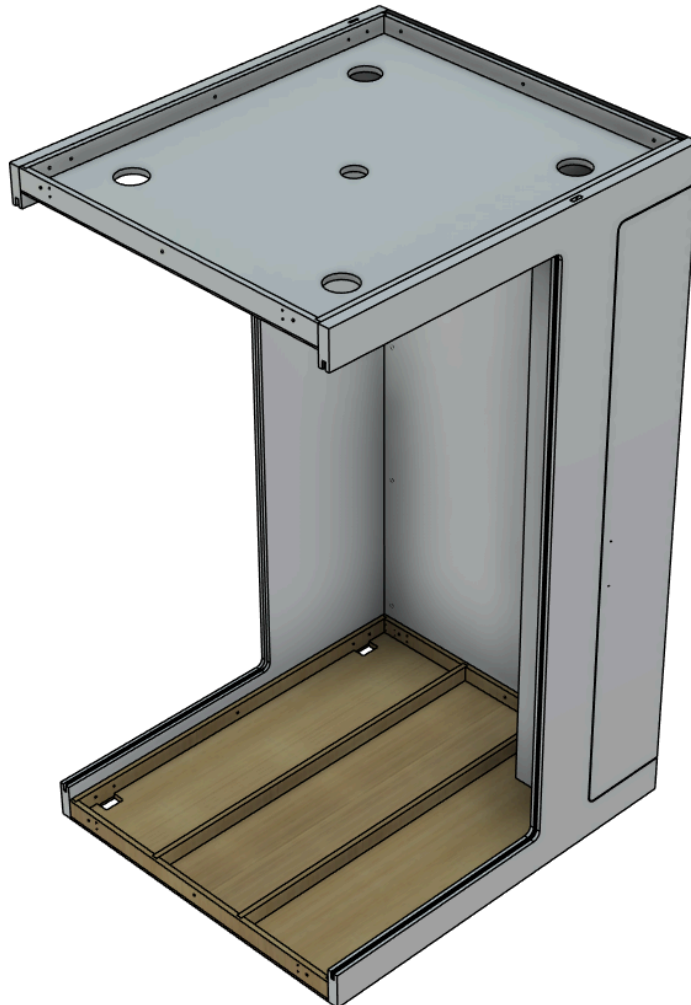
Step Seven: Install the Closet Door

- Install two fixed mounting plates to the enclosure, and separate hinges to the door, then click the door assembly onto the mounting plates. Do not use the middle hinge mounting location
- Ensure the door is level and aligned with the adjacent panels, leaving a consistent panel gap all around. adjust the hinges as necessary using the adjustment screws.
- Install the door handle using the included hardware.



Step Eight: Install the Roof

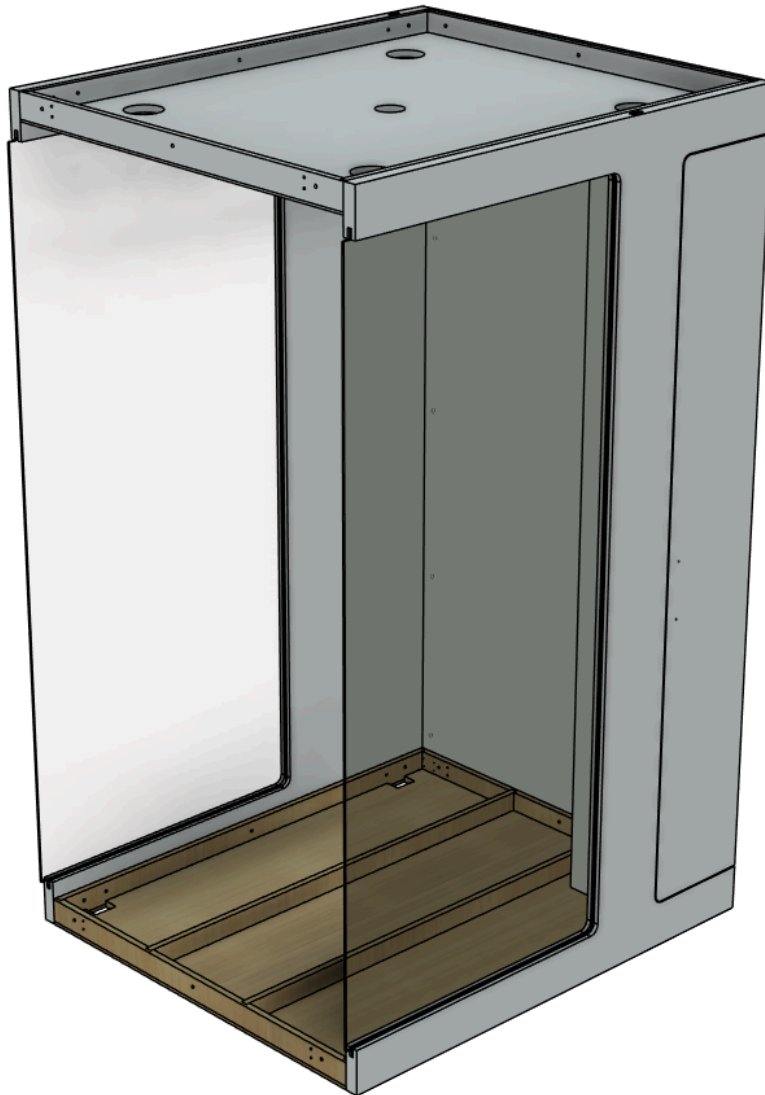
- Note the “front” label on the roof panel, and the cable opening which sits over the closet.
- Insert dowels into the sides of the roof panel.
- With an assistant, lift the roof in place and attach the roof to the rear wall with 3 hex screws and washers. Keep the roof supported until it is screwed to the side walls.
- Pass the side wall LED wires through the roof cutouts.
- Align the roof dowels with the side walls and secure the roof with 3 hex screws and washers per side.



Step Nine: Install the Side Glass

Handle the glass with care, and never place it directly on a hard surface without protection.

- Identify the two side glass panels by their two notched corners, which will face the front of the enclosure.
- The narrow panel goes on the right side, and the wide panel goes on the left side.
- Using caution, slide the glass into the grooves in the side wall panels.
- Once the glass is in place, press the rubber window gaskets into the groove on the interior of the glass.



Step Ten: Install the Floor

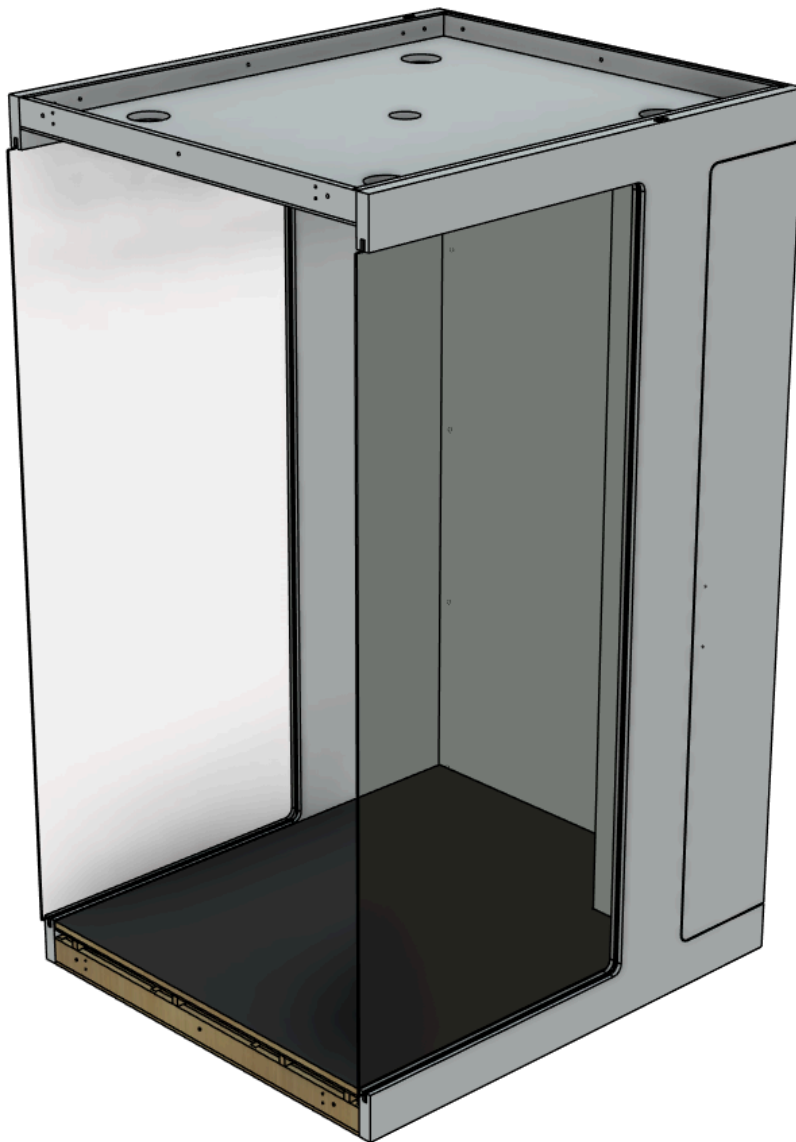
Recheck level and adjust as necessary before installing floor panels.

For loose salt crystals:

- Install the solid finished wood panel. (Salt will be added after assembly is complete)

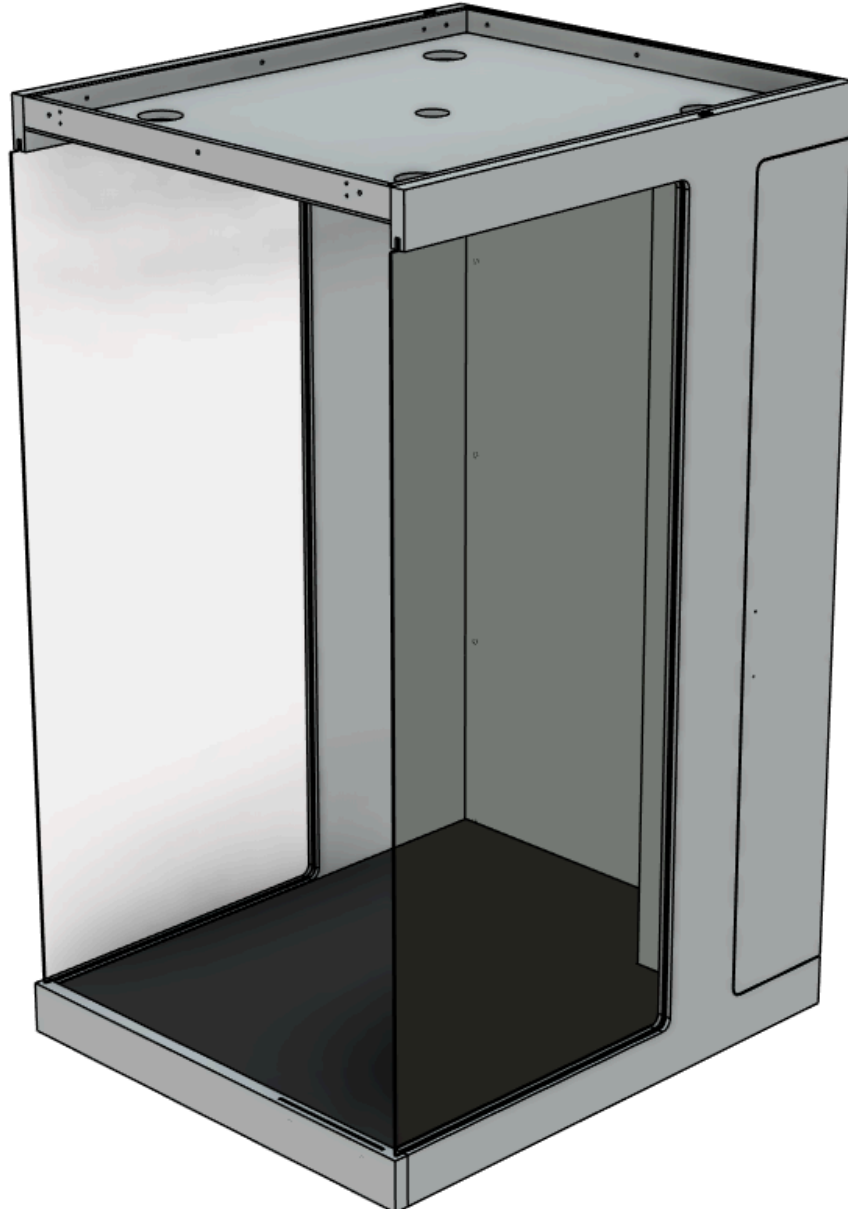
For finished wood:

- Install the ribbed flooring spacer.
- Install the solid finished wood panel on top of the spacer.



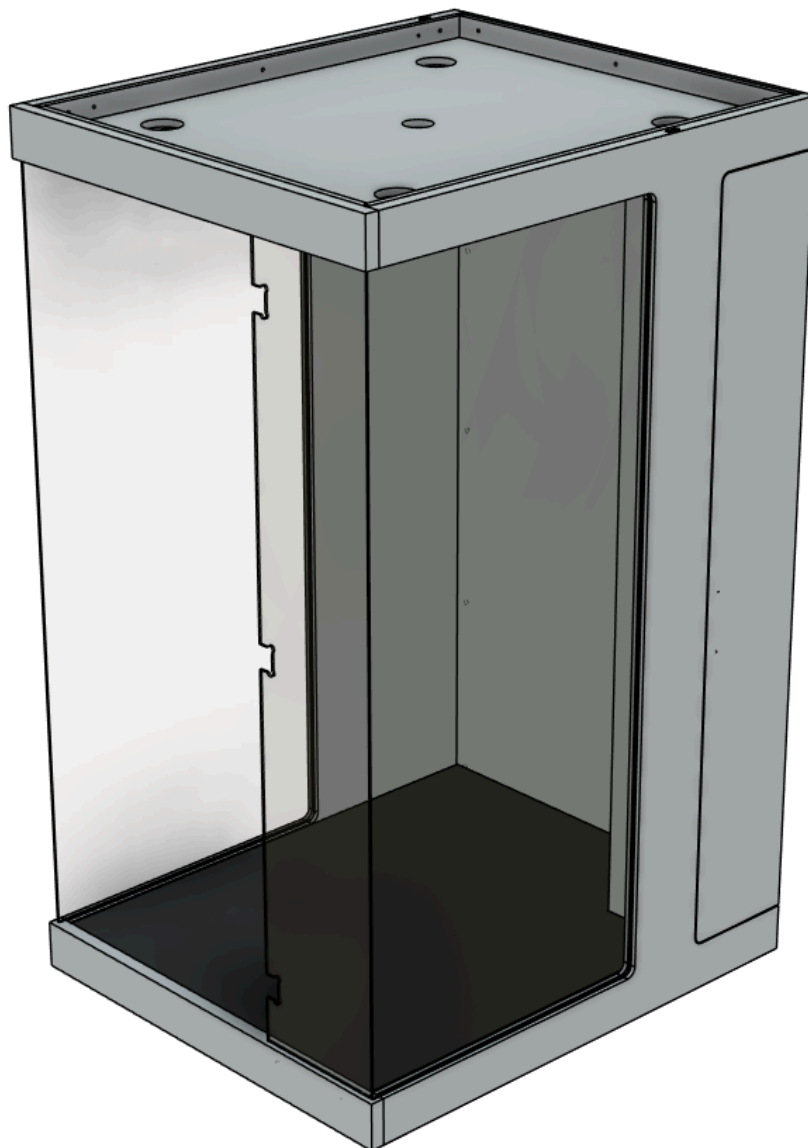
Step Eleven: Install the Lower Beam

- Install 2 dowels in the front of the base panel and roof panel and 4 dowels on the front of each side panel.
- Identify the lower beam labeled "LOWER"
- Ensure the slot in the lower beam is facing up.
- Align the lower beam with the dowels.
- Loosely install 3 hex screws through the base into the lower beam. Do not tighten at this stage.



Step Twelve: Install the Fixed Glass

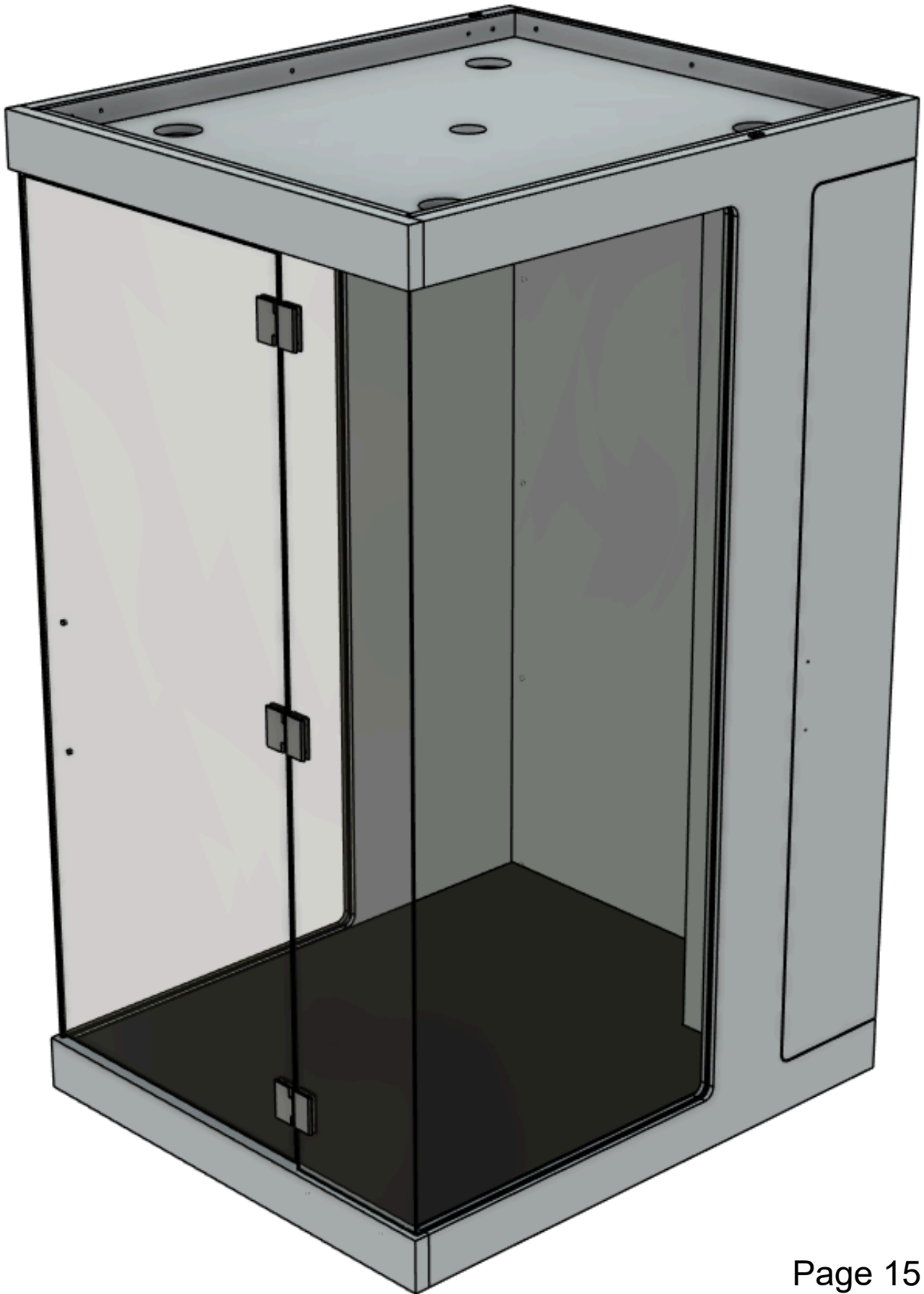
- Identify the fixed glass as the narrow panel with 3 hinge cutouts.
- Carefully insert the bottom of the fixed glass into the slot in the lower beam.
- Install the upper beam, aligning the upper beam with the roof dowels and the fixed glass and install 3 hex screws through the roof into the upper beam.
- Tighten the upper and lower beam bolts, ensuring the fixed glass is aligned with the right side wall glass.



Step Thirteen: Install the Door

- Install the handles on the door, note that the handle holes are offset towards the bottom of the door.
- Attach all 3 hinges to the door. The screws should be located on the interior of the enclosure.
- The C-shaped cutout is the fixed side of the hinge.
- Ensure the glass is sandwiched between the rubber hinge gaskets, and that the plastic edge protector is properly located inside the hinge.
- Align the glass flush with the inside edge of the hinge.
- Lift the door into place, using a 1/2" spacer below the door and a 1/8" spacer between the door and the side wall glass to ensure alignment.
- Have an assistant install and tighten the hinge from the interior of the enclosure.
- Install the provided slide on gaskets on the top, bottom, and left hand side of the door. Cut to length using a sharp utility knife.

Step Thirteen: Install the Door



Step Fourteen: Connect the Wiring

- Pass the 2 power cables from the top of the closet through the roof and connect them to the fan power supplies. The two lower cables will be used later for the halogenerator.
- Pass the roof mounted power bar cable down into the closet and connect it inside the column.
- Connect the 2 LED controllers to the 2 side wall LEDs, ensuring the connector arrows are aligned.
- Pass the main power lead from inside the closet through the hole in the rear wall panel and connect it to power.
- Test the overhead lights, side wall LEDs, and the speaker to ensure they are functioning correctly.

Step Fifteen: Install the Salt Outlet

- Thread the extension pipe into the back of the salt outlet and hand tighten.
- From inside the enclosure, insert the salt outlet into the cutout on the closet wall and rotate it clockwise to lock it into place on the pre installed screws.
- Ensure the salt outlet is level when installed correctly.



Step Sixteen: Install the Halogenerator

- Place the halogenerator into the closet, sliding the rear pipe through the cutout in the closet wall.
- While holding the halogenerator in place, secure the top mounting bracket to the closet wall using the 2 included Phillips head screws.
- Connect the power and control connectors on the bottom of the halogenerator, ensuring the control connector's lock ring is secured.



Step Seventeen: Install the Shelves

- Using the provided shelf brackets, evenly distribute the shelves throughout the closet.
- Ensure the shelf notches are aligned with the cable harness, and avoid pinching any loose cables.

