



BioForward
WISCONSIN

**ANNUAL
REPORT 2025**

April 2025 -
March 2026



HOPE

is here and it's the

wisconsin biohealth industry

Wisconsin's biohealth industry is transforming lives — not through a single breakthrough, but through the strength of a deeply connected and integrated ecosystem. Across the state, our companies are advancing science, scaling innovation, and delivering solutions that improve health outcomes worldwide. It is this collective leadership across industry and research that defines Wisconsin biohealth.

From life-changing CRISPR applications like the Baby KJ story with Aldevron, to Wisconsin's leadership as a global center of excellence in probiotics, to the execution now underway through the Wisconsin Biohealth Tech Hub—this work is not theoretical. It is active, coordinated, and already producing real results.

This year, BioForward helped translate that momentum into measurable outcomes by releasing, with our partners, the Wisconsin Biohealth Investor Portfolio Report and the Alliant Energy Competitive Positioning Report, and by launching the Capability Cloud. Together, this reinforces what our members already know: **Wisconsin delivers exceptional scientific depth, manufacturing scale, a strong and growing talent pipeline, and a compelling environment for investment and expansion.**

This moment is about momentum built with purpose—uniting industry, academia, and policymakers to strengthen our workforce, attract capital, and ensure Wisconsin remains competitive in a rapidly evolving global landscape.

Together, We Are Wisconsin Biohealth!

Nicolas Paris
Board Chair

Lisa Johnson
CEO



OUR YEAR

at-a-glance

BIOFORWARD MEMBERS

254

biohealth & associate

a powerhouse network driving Wisconsin's biohealth leadership

INCLUSIVE LEADERSHIP

55%

female board

bringing balanced representation & expertise to BioForward's Board

COMING TOGETHER

>2,000

attendees

BioForward signature events brought together community members

COMMUNITY IMPACT

>\$17K

donated to 11 orgs

supporting STEM education & community health statewide

NEW RESOURCE LAUNCHED



to promote member strengths and create partnerships

SPOTLIGHT ON WI

>31M

digital impressions

bringing national attention to Wisconsin's biohealth momentum

ADVANCING THE TECH HUB

62

project positions hired

ensuring the capacity needed to deliver outcomes

MEMBER SAVINGS

\$46M

plus other benefits

in savings for members participating in BioSavings Program

INDUSTRY REPORTS

2

new reports

building attraction/expansion efforts

Mission-Driven Momentum

mission

To grow Wisconsin biohealth companies and **UNITE** the industry to **DEFINE** and **INFLUENCE** the future of healthcare.

- Networking, events, & connections
- Advocacy & policy leadership
- Company attraction & expansion
- Industry data & insights
- Visibility & public relations
- BioSavings Program
- Wisconsin Biohealth Tech Hub
- Industry collaboration
- Talent attraction & retention
- Strategic initiatives



OUR TEAM

staff



Lisa Johnson
CEO

Jordan Lamb
Legislative Counsel
The Welch Group

Chad Rhodes
Accountant
Figures First Consulting



Marwa Bassiouni
Director, Partnerships
& Operations



Michael Harrison
Sr. Director, Strategic
Initiatives, Community
Engagement,
& MKE Office Director



Maci Hewitt
Director, Member
Engagement & Eau
Claire Office



Rissa Guffey
Sr. Director, Marketing &
Communications



Keeley Behr
Intern

Audrey Guffey-Duymovic
Intern



Wendy Harris
Regional Innovation
Officer



Chris Unterberger
Lead Project Manager



Jamie Bauer
Grants Specialist



Service Providers

State Advocacy



401K



Information Technology



Insurance



Legal



Accounting



Banking



Executive Committee



Nicolas Paris
Board Chair

CEO



Sarah Duellman
Treasurer

*Biotech Industry
Strategy & Growth Lead*



Edward Ladwig
Secretary

*President, Food
Chemistry Testing*



Lisa Johnson
CEO



OUR TEAM

board

Governing Board



Anjon Audhya
*Sr. Associate Dean for
Basic Research, Biotech,
& Graduate Studies*



Deena Ensenberger
*VP and General Manager,
Global GMP Laboratories
Clinical Research*



Jenny Fong
*Site Head, Madison &
Versona, LS | ISCO |
CDMO Operations*



Pam Gabris
*VP, Global Head
Development Strategy
& Study Management*



David Katzmann
Senior Research Fellow



Shawn Honeyager
VP, Global Operations



Adam Kujath
*EVP, Global Supply Chain
& Strategic Operations*



Kevin Meech
CEO



Mara Lord
*Chief Strategy &
Growth Officer*



Alison Hess
VP, Finance



Jessica Lewis
Senior Counsel



Brad Pietz
*Executive VP & Chief
Lab Officer*



Manuela Govin
*Executive, GE HealthCare
Wisconsin Academics*



Carolyn Pettersson
*Site Leader, Sr. Director,
Manufacturing*



Justin Koepsel
*Senior Director,
Commerical Operations*



Brittany Long
*Sr Director, Strategic
HR Business Partner*



MEMBERSHIP

at-a-glance

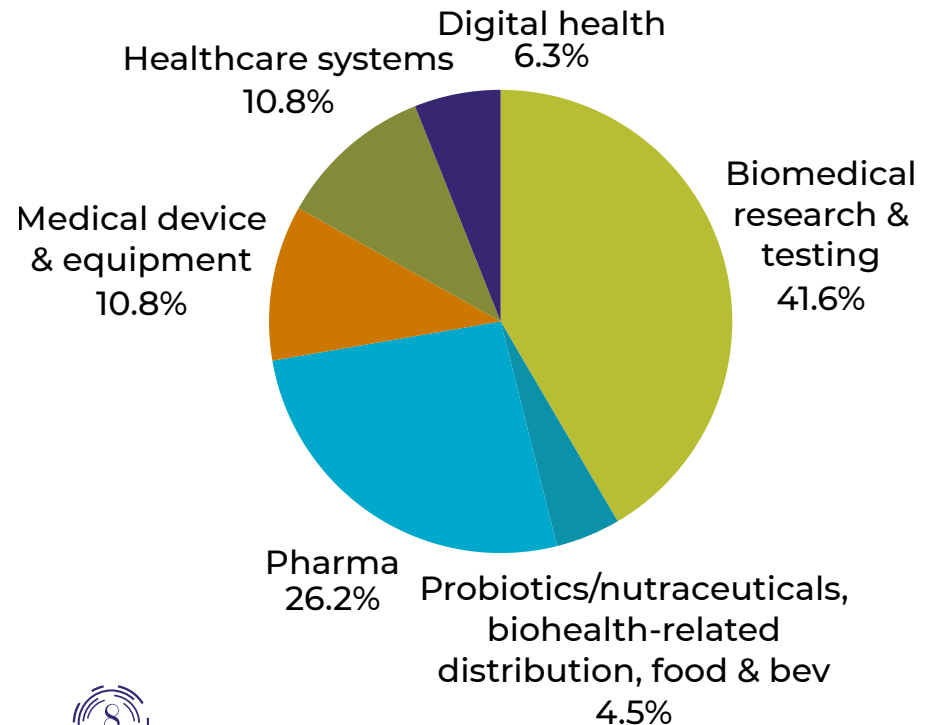
Membership Breakdown

- Biohealth: 51.7%** *An integrated network of health solution leaders including research institutions, biotech and biopharma, digital health, healthcare systems, medical device, and diagnostics.*
- Associate: 29.4%** *Service providers and suppliers who support the biohealth industry.*
- Education: 9.5%** *Educational programs not including research institutions that support the biohealth industry through programming and workforce.*
- Other: 9.5%** *Government entities and non-profit organizations.*

254

**Members as of
March 31, 2026**

Biohealth Member Breakdown

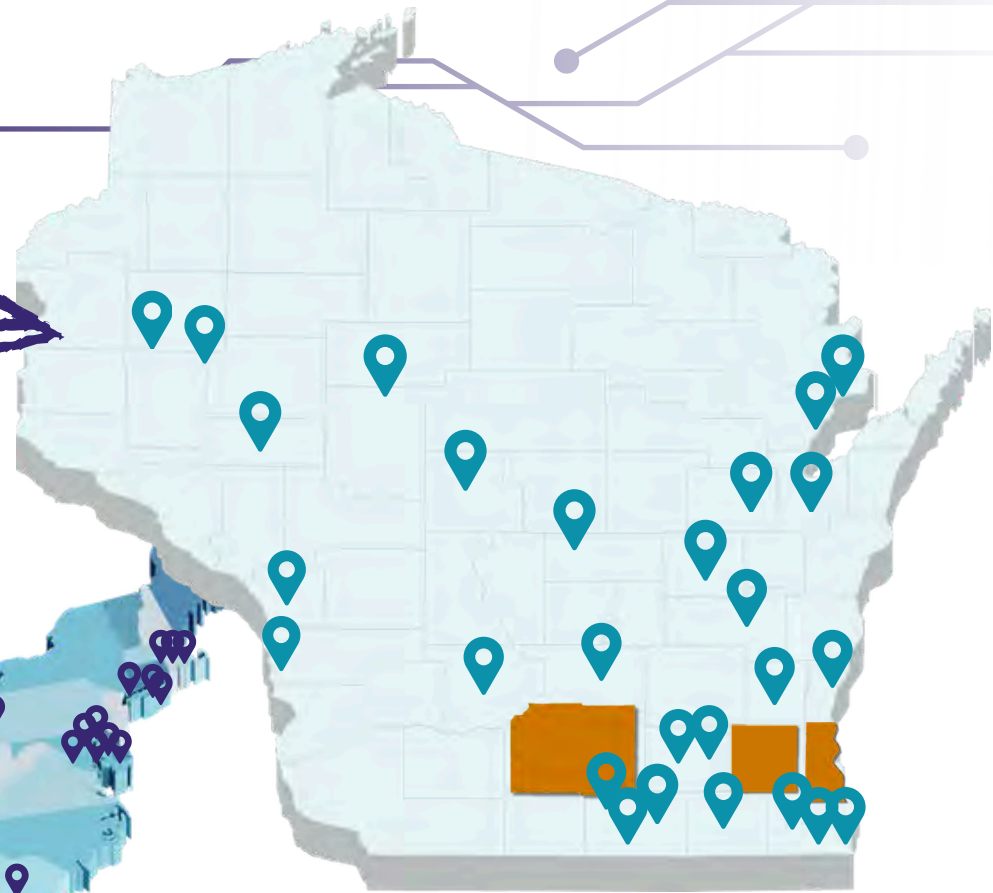
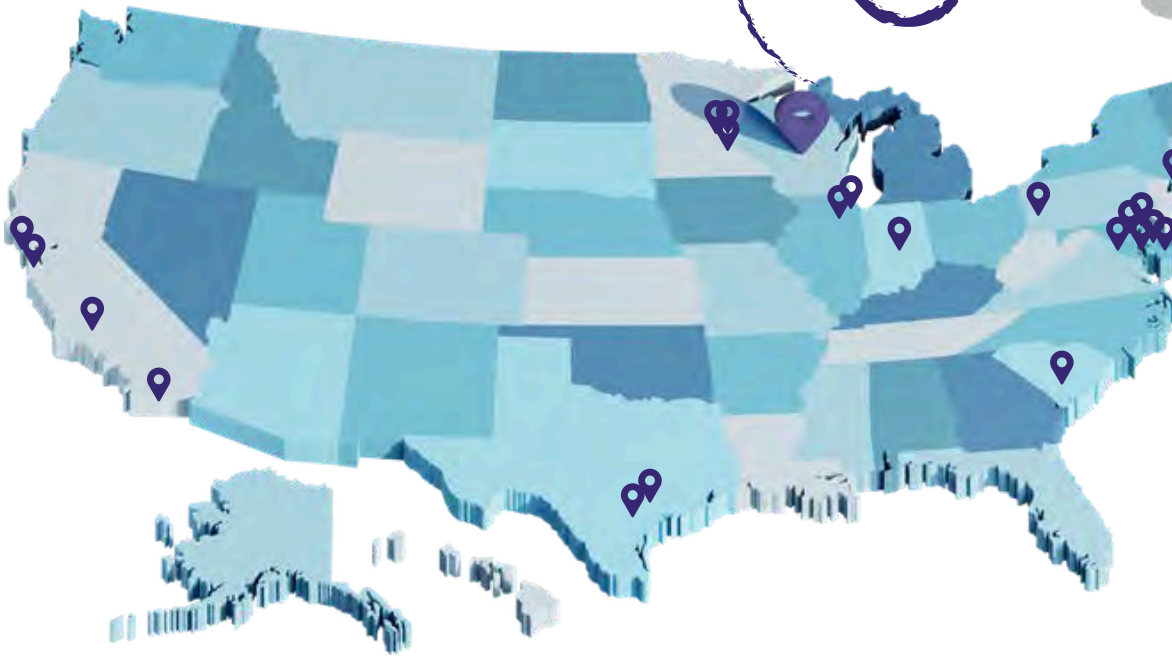





**Photo of Gilson employee working in a lab*



*United in Purpose
Driving Progress*

📍 **Members in Wisconsin -
and beyond!**



-  **Dane County: 145 members**
-  **Milwaukee County: 34 members**
-  **Waukesha County: 12 members**



REPORTING

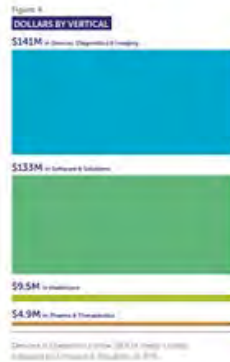
wisconsin's growth

BioForward produces reports that go beyond numbers—they **tell the story of Wisconsin's biohealth strength**. From measuring our statewide economic impact to showcasing investment potential and opportunities for company attraction and expansion, these insights help guide business decisions, attract new partners, and **position Wisconsin as a global destination for biohealth advancement**.

WISCONSIN DEAL DASHBOARD

57 LIFE SCIENCE COMPANIES, \$288M RAISED

In 2024 and Q1-25, 57 Wisconsin-based biohealth companies raised \$288 million of venture financing. Figures 4-7 show breakouts by vertical sub-sector, deal size and funding stage, while Tables 6-8 show the specific companies and deals included in each category.



BioForward Members Gain Usable Intelligence

- **Data you can act on:** Use insights to guide investment strategy, site selection conversations, talent planning, and capital decisions.
- **Targeted analysis for your organization:** Members receive tailored summaries and talking points that can be used in board decks, investor meetings, recruitment efforts, and advocacy.
- **Credible validation:** Share BioForward reports as validation of Wisconsin's strengths.
- **Strength in alignment:** These reports equip Wisconsin companies with a unified story.

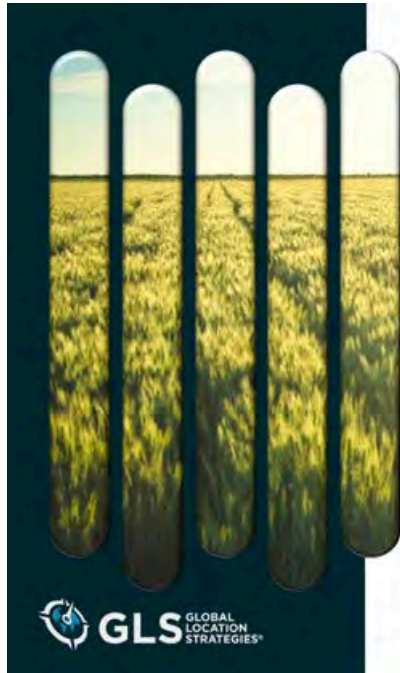


Read the Report

2024-Q1-25
WISCONSIN
BIOHEALTH INVESTOR
PORTFOLIO REPORT

BioForward
WISCONSIN

Turning Data into Direction

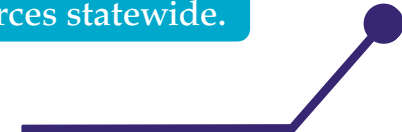


Alliant Energy +
BioForward
Final Report:
Location Benchmarking +
Competitive Positioning
October 10, 2025



Read the Report

BioForward is creating business development tools and a webpage that turn data into attraction- and expansion-ready resources statewide.



What's Coming Next

Look out for the next **Wisconsin Biohealth Investor Portfolio Report** in **Summer 2026!**

BioForward will release the next **Wisconsin Biohealth Economic Impact Report in October 2026**, providing fresh data, new trend analysis, and updated insights to strengthen your strategic planning and external communications.

WISCONSIN BIOHEALTH TECH HUB

leadership



As the **lead organization** of the Wisconsin Biohealth Tech Hub (WBTH), BioForward plays a significant role in shaping the future of the biohealth industry. Our leadership ensures strategic alignment, industry representation, and the successful deployment of federal and state investments into transformational projects.

Key Milestones

Year One of Project Implementation Completed

- The WBTH successfully completed its first full year of project implementation, advancing U.S. Economic Development Administration (EDA) funded initiatives from planning into operational execution across multiple focus areas.

State & Federal Accountability Delivered

- All required performance and financial reports were submitted to the Wisconsin Economic Development Corporation and the EDA, demonstrating progress against approved milestones and responsible stewardship of federal and state resources. Additionally, a report was submitted to the State Legislature.

Ecosystem Engagement

Theranostics Ecosystem

- Brought together industry, research, and clinical partners to align innovation and commercialization.

National & Regional Visibility

- Shared WBTH progress and collaboration model at regional and national events.

Project Hiring

62

project positions hired

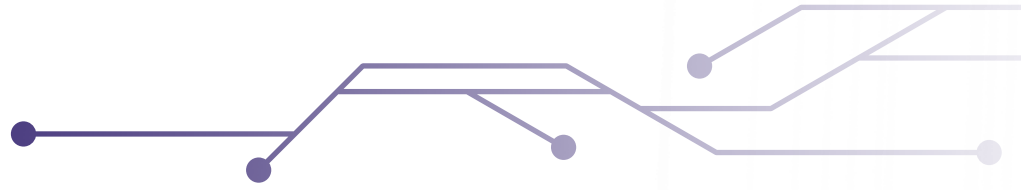
marking major ramp-up to support project delivery

This hiring reflects project-specific staffing required to fulfill EDA Tech Hub goals, not broader ecosystem employment.

What This Year Demonstrated

- Execution against federally defined milestones
- Measurable progress from funding to implementation
- Strong governance, reporting, and compliance
- A growing, activated consortium delivering on shared goals

From Designation to Delivery



ADVOCACY & impact

BioForward advocates for policies that support Wisconsin's biohealth industry. In 2025, we advanced key state and federal initiatives—driving meaningful progress through direct engagement with policymakers, strategic legislative efforts, and collaboration with industry leaders. Together, we ensure that the needs of biohealth companies, academia, and research institutions are prioritized and reflected in policy decisions.



Supported




Monitoring




Opposed

State Legislative Activities


Cole's Act (Includes All Co-Pays Count): Require all prescription drug payments to count toward patient out-of-pocket costs. 

R&D Sales & Use Tax Exemption (CRO Services): Legislation to extend sales and use tax exemptions to qualified contract research services, progressed through House and Senate to become formally enrolled. 

Universities of Wisconsin Budget Request: Investment in university research, education, and workforce development. 

2025-27 Budget Impacts: Tracked budget discussions that affect Wisconsin's biohealth industry. 

R&D Tax Credit Expansion: Expand carryforward provisions for Wisconsin research tax credits. 

Gain of Function Research Ban: Blocks critical research at Wisconsin universities on pandemic-related pathogens. 


National Immunization Awareness Month: Proclaimed August 2025 as National Immunization Awareness Month in WI. 


Federal Legislative Activities

SBIR & STTR Reauthorization: Reauthorization of SBIR programs passed through the Senate and House with funding to 2031. 

American Innovation & R&D Competitiveness Act: Restored immediate deductibility of research and development expenses. 

Ensuring Pathways to Innovative Cures (EPIC) Act: Address IRA provisions impacting small-molecule drug development. 


EDA Regional Tech Hubs Funding: Continued investment in Wisconsin's Biohealth Tech Hub. 

Most Favored Nation Pricing: Proposals to apply foreign drug price controls in the U.S. 

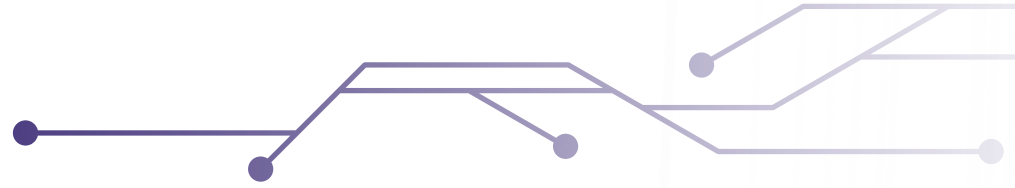
Medicare Multi-Cancer Early Detection Screening Coverage Act (MCED): Bipartisan bill aiming to create a pathway for Medicare coverage of FDA-approved, blood-based MCED tests. 

Give Kids a Chance Act: Reauthorize the Rare Pediatric Disease (RPD) Prior Review Voucher (PRV) program. 

NIH Funding Cuts: Protect federal funding for biomedical research and innovation. 

ORPHAN Cures Act: Aimed at boosting rare disease drug development by removing government price setting. 

Providing a Voice for Wisconsin Biohealth



BioForward WISCONSIN

WISCONSIN BIOHEALTH SUMMER 2025 LEGISLATIVE REPORT

Prepared for BioForward Members

Legislative Landscape & BioForward's Role

On July 3, 2025, Governor Evers signed the 2025–27 State Biennial Budget (Wisconsin Act 15), a \$111.1 billion package passed with bipartisan support. Among its provisions is a new hospital assessment—enacted quickly to protect Wisconsin's Medicaid funding in light of potential federal policy changes.

In this fast-moving policy environment, BioForward is focused on ensuring Wisconsin's biohealth industry not only adapts but thrives. We engage directly with policymakers from both parties, advocate for strategic investments in research, innovation, and healthcare, and work to secure policies that strengthen our state's position as a national leader in biohealth.

Key Takeaways

- 01** State Budget (2025–27): Brings critical investments in higher education and research infrastructure, includes a hospital assessment that supports the broader healthcare system, and provides significant tax cuts.
- 02** State Legislative Advocacy: BioForward continues to be an active member of the R&D Tax Credit Coalition, pursuing legislation for indefinite carryforwards of unused credits. It also actively supports 'All Copays Count' legislation to ensure patient assistance contributes to out-of-pocket maximums.
- 03** Federal Budget Reconciliation Bill (H.R. 1): Includes a significant win for businesses with provisions for full expensing of domestic research and experimental expenditures in the year they were incurred. Also introduces Medicaid and healthcare program changes and invests in AI technologies.
- 04** Broader Federal Policy: BioForward supports innovation-promoting acts/legislation such as SBIR reauthorization, the American Innovation & Competitiveness Act, and the ORPHAN Cures Act, while opposing 'Most Favored Nation' prescription drug pricing policies. Federal AI policy and research appropriations present evolving landscapes requiring industry engagement.



BioForward provides kits for easy-to-understand views of industry reports

MESSAGE

from a platinum medallion member



Serafino Fabiano

*Associate VP, Site Head
Lilly Kenosha County*

“

Being embedded in Wisconsin's biohealth community means contributing to an ecosystem that supports innovation while maintaining the highest standards of integrity, quality and work ethic.

”

Eli Lilly: Strengthening Wisconsin's Biohealth Ecosystem Through Collaboration

Wisconsin's biohealth ecosystem represents more than just an industry cluster—it's a community built on shared values of innovation, excellence and meaningful impact. As we continue our journey at Lilly's Kenosha site, including our \$3 billion expansion, we've witnessed firsthand how Wisconsin's collaborative spirit accelerates both individual company success and collective industry advancement.

Engagement with BioForward is essential because no single organization can tackle the complex challenges facing our industry alone. Whether navigating evolving regulatory landscapes, embracing new technologies or developing the next generation of talent, we're stronger when we learn from one another. The cross-pollination of ideas, best practices and partnerships that emerge from active industry participation creates competitive advantages that benefit everyone, from startups to established manufacturers.

For Lilly Kenosha, being embedded in Wisconsin's biohealth community means contributing to an ecosystem that supports innovation while maintaining the highest standards of integrity, quality and work ethic. Through mentorship programs, shared workforce development initiatives and collaborative problem-solving, we're not just building our own capabilities — we're helping to ensure that Wisconsin remains a premier destination for life sciences investment and talent.

The most impactful progress happens when we challenge ourselves to think beyond our individual operations and invest in the ecosystem - systems, people and culture - that sustain long-term industry performance.

“

We're committed to meeting Wisconsin innovators where they are—aligning our technologies and expertise to their mission so discoveries become products that improve lives.

”



Mackenzie Varga
VP of Sales, Biotech

Thermo Fisher Scientific: Catalyzing Wisconsin's Biohealth Momentum

Wisconsin's innovation economy thrives at the intersection of research excellence, scaled manufacturing, and workforce development. Thermo Fisher Scientific accelerates that momentum by bridging lab discovery with real-world impact—supporting universities, startups, and established manufacturers with reliable instruments, consumables, and scalable bioproduction solutions. From enabling cutting-edge proteomics to streamlining GMP workflows, Thermo Fisher helps Wisconsin teams move faster, with higher quality and compliance.

Strategic partnerships are central to this role. By co-creating training programs and offering application support, Thermo Fisher and BioForward strengthens talent pipelines and reduces translational friction for local biotech ventures. That ecosystem approach—pairing technical depth with operational scalability—turns breakthrough ideas into manufacturable therapies, diagnostics, and sustainable materials.

“We're committed to meeting Wisconsin innovators where they are—aligning our technologies and expertise to their mission so discoveries become products that improve lives.” — Mackenzie Varga, VP of Sales, Biotech, Thermo Fisher Scientific

As Wisconsin expands biomanufacturing capacity and precision health initiatives, Thermo Fisher's integrated portfolio and local engagement provide the infrastructure and know how to grow. The result: faster time to impact, resilient supply chains, and a stronger statewide biohealth economy.

SAVINGS programs

Our savings programs connect members with trusted suppliers offering exclusive discounts on essential products and services.



BIO SAVINGS PROGRAM

BioForward has partnered with Fisher Scientific to leverage our combined purchasing power so all members can benefit.



SIGNIFICANT SAVINGS
on list price

QUARTERLY CREDITS
on purchases

>\$46M

SAVED BY PARTICIPATING MEMBERS IN 2025

ANNUAL CREDIT
on growth

ANNUAL CREDIT
on e-commerce



FREE STANDARD SHIPPING



**Images from Fisher Scientific*

Member Value Multiplied

BIO BUSINESS SOLUTIONS



Through BioForward's membership in the Biotechnology Innovation Organization (BIO), our members can take advantage of these BIO Business Solutions programs.



*Images from BIO

DONATIONS

& giving

Investing in the Future of Biohealth



BioForward's donations support partnerships that advance STEM education and community health across Wisconsin. We are proud to work alongside members who share this commitment and amplify its impact.

Vital Donations to Support STEM & Community Health



>\$17K
donated

12
organizations
supported

*Photo of BioForward Board Member, Jenny Fong, from MilliporeSigma, sharing her time and love of science with students



Connecting Industry Partners

COLLABORATION & education

A thriving biohealth ecosystem is built together. Through collaboration and education, BioForward aligns industry, educators, and community partners—creating opportunities, expanding access, and preparing the next generation of biohealth talent.

Women in Biohealth

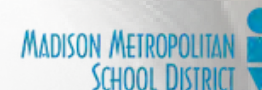


Women in Biohealth provides networking, mentorship, and professional development opportunities to support women at all career stages. Through curated programming and partnerships with industry leaders, we empower women to drive innovation and leadership within Wisconsin's biohealth ecosystem.

Industry Collaboration & Education

BioForward collaborates with academic, research, and policy partners to strengthen industry training, education, and engagement—building a skilled, future-ready biohealth workforce.

Over the past year, this work expanded across higher education, workforce development, research translation, and policy engagement, connecting students, faculty, and professionals to real-world biohealth opportunities while strengthening alignment between academia and industry. **List of educational partners is not exhaustive.*



**Photo of Sen. Hesselbein presenting to Women in Biohealth*

INITIATIVES & investments

BioForward's initiatives drive meaningful impact across the biohealth industry by fostering collaboration, education, innovation, and community support. Through strategic partnerships and targeted investments, we strengthen Wisconsin's biohealth ecosystem.



The NEW BioForward Capability Cloud

A shared digital platform designed to connect, inform, and strengthen Wisconsin's biohealth ecosystem.

Launched in June of 2025, the BioForward Capability Cloud serves as a centralized, searchable resource showcasing biohealth capabilities, expertise, and assets across the state. The platform supports collaboration, discovery, and visibility for companies, academic institutions, and partners.

What can the Capability Cloud do for you?

The database makes it easier to find the companies in Wisconsin that can help you grow your business.

Biohealth Companies

Find the right service providers, identify new partners, and network with colleagues

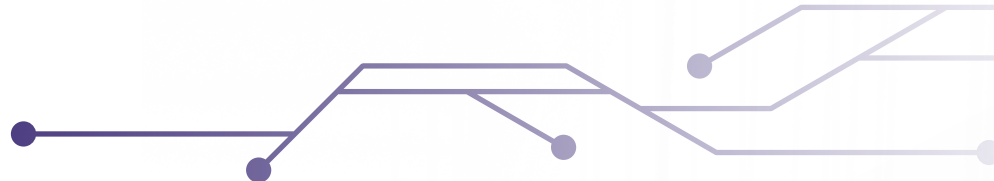
Biohealth Ecosystem

Learn about the industry, identify clients and partners, and connect with Wisconsin's biohealth companies

In the coming year, BioForward will continue to enhance the Capability Cloud by improving content, expanding participation, and targeting outreach to ensure the platform delivers greater value to members and partners.



Bringing Member Value



What We Invest In

Advocacy Strategic legislative efforts	Shared Infrastructure Capability Cloud	Industry Intelligence Reports & data	Collaboration Working groups & partnerships	Supporting Innovation Startups & capital access	Marketing & Storytelling Shared ecosystem narrative
--	--	--	---	---	---

Advocating for policies that support Wisconsin's biohealth industry.

- BioForward's advocacy efforts are designed to directly benefit biohealth companies and research institutions in Wisconsin. We actively engage in state and federal legislative activities to support or protect our industry (see page 14).

Providing shared tools and platforms that connect members and strengthen capabilities.

- BioForward invests in shared infrastructure, including the Capability Cloud and digital platforms, to enable collaboration, resource-sharing, and operational efficiency across the ecosystem.

Data and insights to inform decision-making, advocacy, and growth.

- BioForward develops and delivers industry intelligence that helps members, partners, and policymakers better understand Wisconsin's biohealth landscape and make informed decisions.

Helping members exchange best practices & strengthen operational resilience.

- BioForward continued to support member-led working groups focused on shared industry challenges and interests, including AI, environmental health and safety, emergency preparedness, and business continuity.

Connecting emerging companies with mentors, capital, and industry expertise.

- BioForward supported innovation and commercialization through engagement with startup programs, pitch events, investor networks, and entrepreneurship initiatives.

Amplifying a shared story across Wisconsin's biohealth ecosystem.

- BioForward elevates member visibility and strengthens the industry's collective voice through coordinated marketing, media engagement, thought leadership, and digital campaigns that showcase Wisconsin's innovation, talent, and impact.

Through these investments, BioForward drives measurable impact, ensuring Wisconsin's biohealth ecosystem remains competitive, connected, and future-ready.

SIGNATURE events

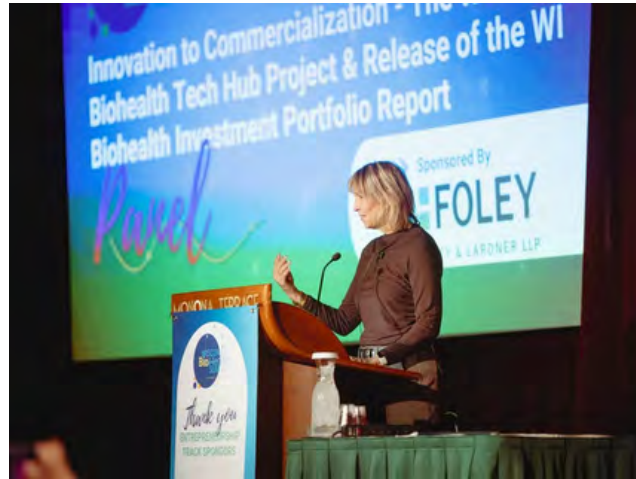


& PRE-SUMMIT VIP RECEPTION

- Attendees gathered for the first-ever 2-day Summit featuring keynotes, panels, networking, awards, and vendor booths.
- An exclusive VIP reception was hosted for sponsors.

BioForward's signature events and smaller educational and networking programs drive collaboration and industry growth. These gatherings strengthen Wisconsin's biohealth ecosystem by fostering connections and engaging employees.

**Annual Member Meeting and Summit photos courtesy of Ammerman Photography*



Bringing Wisconsin's Biohealth Community Together



Members-only luncheon with industry presentations



Our newest event to celebrate with the MKE community

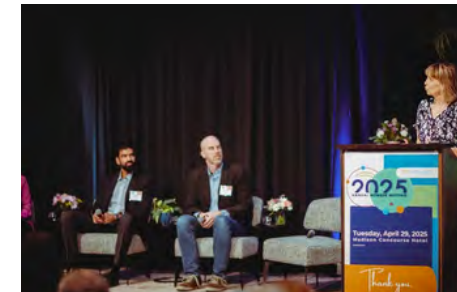
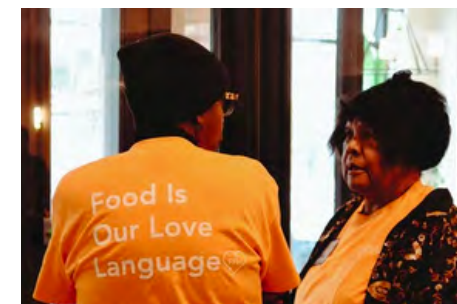
BIOSAVINGS CUSTOMER APPRECIATION LUNCHEON

Interactive fun lunch for BioSavings members



Members-only celebration with food, fun, and networking

**End of Year photos courtesy of ArrowStar Photography*



AWARDS & recognition

Each year BioForward celebrates the leaders shaping Wisconsin's biohealth industry and making a real impact.

Wisconsin Biohealth Awards

At the Wisconsin Biohealth Summit, we honor outstanding scientific and business leaders with the Wisconsin Biohealth Awards, recognizing their contributions to advancing health.



Hector F. DeLuca
Scientific
Achievement
Award

Dr. James Dahlberg



School of Medicine
and Public Health
UNIVERSITY OF WISCONSIN-MADISON



WI Biohealth
Business
Achievement
Award

Dr. Scott Rathgaber

emplify
HEALTH

“ Both honorees are proof of what’s possible when science and strategy come together with purpose.

LISA JOHNSON, CEO, BIOFORWARD

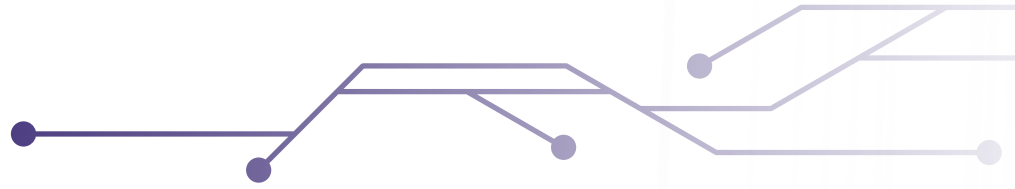
Press Release 8/6/2025

”



*Awardee photos courtesy of Ammerman Photography

Celebrating Excellence in Biohealth



Community Service Awards

The Community Service Awards were developed to celebrate exceptional members who make a difference in our community. Award recipients were announced at the 2025 Annual Member Meeting.



Company Award



Individual Award

April Hughes



Did you know?

BioForward awards are thoughtfully designed by Tim Killinger Design to be meaningful and timeless.

**Awardee photos courtesy of Ammerman Photography*

MEDALLION

members

Thank you to our Medallion Members going into the 2026-2027 membership year for your support of BioForward and commitment to uniting and growing Wisconsin's biohealth industry.

PLATINUM



GOLD



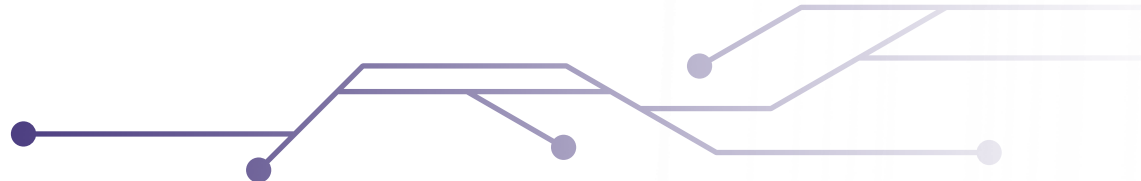
SILVER



BRONZE



In Their Words



On Becoming a Member

We joined BioForward because we care deeply about supporting organizations and leaders navigating complexity while building a better future. Having watched BioForward from the outside for several years, it's always been clear that under Lisa Johnson's leadership, BioForward connects people to move the ecosystem forward in thoughtful, meaningful ways. We're grateful to be part of this community now!

Holly Anne Burns



On the Wisconsin Biohealth Summit

The Biohealth Summit was an energizing experience. The sessions were not only thought-provoking but truly inspiring—sparking new ideas and perspectives across the industry. The opportunity to connect with peers and leaders in the field was invaluable, and the content delivered over just two days was impressively rich and well-curated. It's events like this that remind us why collaboration and innovation are so vital to the future of biohealth.

Robbie Oldenburg



On Joining the Board of Directors

I'm thrilled to be joining the BioForward Board of Directors! Wisconsin has a strong and growing biohealth ecosystem, and BioForward is at the center of connecting people, ideas, and opportunity. I'm excited to contribute, learn from fellow board members, and support an organization that plays such a critical role in advancing innovation, collaboration, and growth across our state. Grateful for this opportunity and looking forward to what's ahead!

Alison Hess



On Advocacy

Our biohealth industry is best represented by a unified voice! Thanks to BioForward, Inc.... for making the case for Wisconsin's biohealth industry!

Kurt Zimmerman



On Enhanced Visibility

At Aldevron, we pride ourselves at being on the forefront of innovation. Being able to manufacture the world's first personalized mRNA-based CRISPR therapy in just six months shows how important and impactful collaboration is.

We want to thank BioForward, Inc. for sharing our story.



On Sponsor Visibility

BioForward, Inc. knows how to throw a great party, and CRB was proud to be a Sponsor for the End of Year holiday event held at the Sylvee in Madison. Super nice touch: they made ornaments with all the sponsors' names printed on them to hang on the tree. It was great to see and catch up again with so many Life Science influencers in Wisconsin while the awesome band "Tonight Only" played in the background.

Eric Slifer



On International Relations

Yesterday, the delegation met with BioForward and Gilson to explore why Wisconsin has emerged as a global leader in personalized medicine and biohealth technology. A huge thank you to our partners for generously sharing their expertise and helping make this exchange so impactful.





2026-2027
members

3G Companies
5 Lakes Institute
Abingdon Health USA Inc
Accuray
ACROBiosystems
Actalent
ADDEV Materials Healthcare
AdvaMed
AdvantiGen Biosciences
Advasaf, a VACK company
Affiliated Engineers
AHP Health Innovation
AIQ Solutions
Aldevron
Alithias, Inc.
Alliant Energy
aMBR Genomics
American Parkinson Disease Association,
Wisconsin Chapter
American Society of Gene & Cell Therapy
Amgen Inc.
Arrowhead Pharmaceuticals, Inc.
ASQE
Automated Logic
Axio BioPharma
Baker Tilly
BellBrook Labs LLC
Benchling
BioHR Consulting
BioPharmaceutical Technology Center
Institute
BioSentinel Pharmaceuticals, Inc.
Biotechnology Innovation Organization (BIO)
BrainXell
Bridge to Cures
Bristol Myers Squibb
Broadwing Advisors

Burns Design Strategy
BWBR
CAI Ready
Calimetrix
Catalent Pharma Solutions
Catalyst BioConsulting
Cell Culture Company
CellScript
Cellular Logistics, Inc.
Center for Technology Commercialization
CG Schmidt Construction
cGMP Consulting Inc.
City of Fitchburg
Columbus Chemical Industries, Inc.
CRB
CSL USA INC
CTaccess, Inc.
DeWitt, LLP
Diverge Translational Science Laboratory
DNAStar, Inc.
Domann-the Board Room, Inc.
Elephas
Eli Lilly and Company
Empirico Inc.
Emplify Health
Energy Solutions
Estrigenix
EUA
Eurofins Food Chemistry Testing
Exact Sciences
Faith Technologies Incorporated
FAR Biotech, Inc
Findorff
Fine Point Consulting
First Business Bank
Flad Architects
FluGen, Inc.
Foley & Lardner LLP
Forward BIOLABS
FUJIFILM Cellular Dynamics
Function Therapeutics, Inc
GE HealthCare
Genentech, Inc.
GeneTel Laboratories, LLC

Gilson, Inc.
Google
GRAIL
GSK
Hamilton Company
HealthLX
HGA Architects
Hooper Corporation
Huffman Keel Partners
Huston Design
Hydrite Chemical
ibidi USA, Inc.
IDBS
Ideal Builders
Illumina
Imbed Biosciences, Inc.
IMEG Engineering
Immuto Scientific
Inguran LLC dba STgenetics
Innovenn, Inc.
International Flavors & Fragrances Inc.
Intuitive Biosciences
Invenra, Inc.
ioGenetics LLC
Isthmus Engineering & Manufacturing Co-op
Isthmus Project/UW Health
JangoBio, LLC
Jefferson County
Keenova
Kendrick Laboratories Inc.
Kenosha Innovation Neighborhood
Kivi Bio
Kraemer Brothers
Labcorp
Lean Design Werks
LEO Cancer Care
LERDAHL | Inspired Workplace Interiors
LGC - Biosearch Technologies
M3 Insurance Solutions
Madison Central Business Improvement
District (BID)
Madison College
Madison Development Corporation
Madison Gas & Electric Company

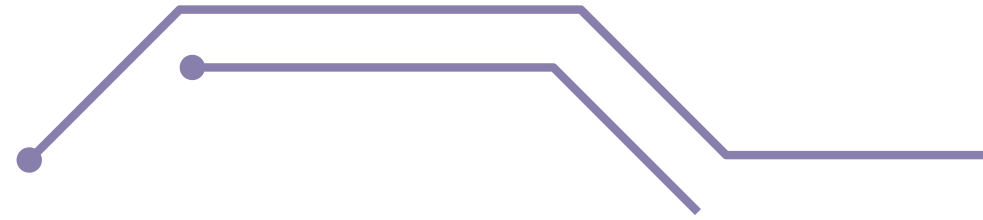


MadRep
Marquette University
Medasource
Medical College of Wisconsin
Medix
Merck
Microbial Discovery Group
MilliporeSigma
Milwaukee School of Engineering
Milwaukee Tech Hub Coalition
Mint Collective LLC
Miron Construction Co., Inc.
Morgridge Institute for Research
Mortenson Construction
Neider & Boucher, S.C.
Nelambos LLC
Network Partners Group
Neurocrine Biosciences
New North, Inc.
NEXT Electric LLC
Nexus Pharmaceuticals, Inc.
North American Mechanical Inc.
NorthStar Medical Radioisotopes
Novii CPA
NVNG Investment Advisors
Object Pharma, Inc.
Octopi Brewing
Owner's Build PM, LLC
PCI Pharma Services
Pepper Construction Group
Pfizer, Inc.
PhRMA
Plumb Pharmacueticals, Inc.
Potter Lawson, Inc.
PPD, part of Thermo Fisher Scientific
Preservation Solutions Inc
Prevention Genetics
Promega
PROMISS Diagnostics
Protein Foundry
PSC Biotech
Public Affairs Company
Quebec Government
Quincy Bioscience
RAMLOW/STEIN Architecture + Interiors
Refined Sciences Inc.

Regenerative Medical Solutions, Inc.
Restaino Associates Realtors
Retham Technologies
Riley Construction
Ring & DuChateau Consulting Engineers
Rogers Behavioral Health
RPRD Diagnostics LLC
RPT Labworks
Sanofi
Scarab Genomics LLC
Scientific Protein Laboratories LLC
SciNote-Electronic Lab Notebook
SHINE Technologies
Shive-Hattery
Spherion Staffing
Splash Clinical
Squire Biosciences Inc
Starion Bank
Stem Pharm Inc.
Sterling Engineering
Sterling Pharma
Strang
SU Group LLC
TCR Biotherapeutics
Tecan
The Concord Group
The QTI Group
The Welch Group
Thermo Fisher Scientific
Third Wave Bioactives
Tosoh Biosciences
Total Water Treatment Systems, Inc.
Town Bank
U.S. Bank
United Way of Dane County
Unitides Laboratories, Inc.
Universities of Wisconsin
University of Wisconsin MS Applied
Biotechnology Program
University Research Park, Inc.
Urban League of Greater Madison
UW-Eau Claire
UW-Madison College Of Engineering Office
of Corporate Relations
UW-Madison School of Pharmacy, Applied
Drug Development Program
UW-Madison, Advanced Materials Industrial
Consortium

UW-Madison, Biotechnology Center
UW-Madison, College of Agricultural and Life
Sciences
UW-Madison, Master of Science in
Biotechnology
UW-Madison, Office of Business Engagement
UW School of Medicine and Public Health
UW-Milwaukee Innovation Accelerator
UW-Milwaukee Research Foundation
UW-Stout
UW-Whitewater
Varizymes
Vaxthera LLC
VC3 Inc
Venture Investors, LLC
Versiti
Vertex Pharmaceuticals
Visionary League INC
Vogel Bros. Building Co.
Voximetry
Vydiant
Waisman Biomanufacturing
Waseen, Inc.
Westphal & Co.
WiCell Research Institute
Wisconsin Alumni Research Foundation
Wisconsin Collaborative for Healthcare
Quality (WCHQ)
Wisconsin Economic Development
Association (WEDA)
Wisconsin Economic Development
Corporation
Wisconsin Rare Disease Alliance
Wisconsin School of Business - Center for
Professional and Executive Development
Wisconsin Startup Coalition
Wisconsin Veteran's Chamber of Commerce
WiSolve
WisperBio
WiSys
Women's International Pharmacy
Xiogenix
XLock BioSciences
Yahara Software
yorCMO





Together, We Are Wisconsin Biohealth

Offices in Madison,
Milwaukee, and Eau Claire



+608-236-4693



membership@bioforward.org



www.bioforward.org

