



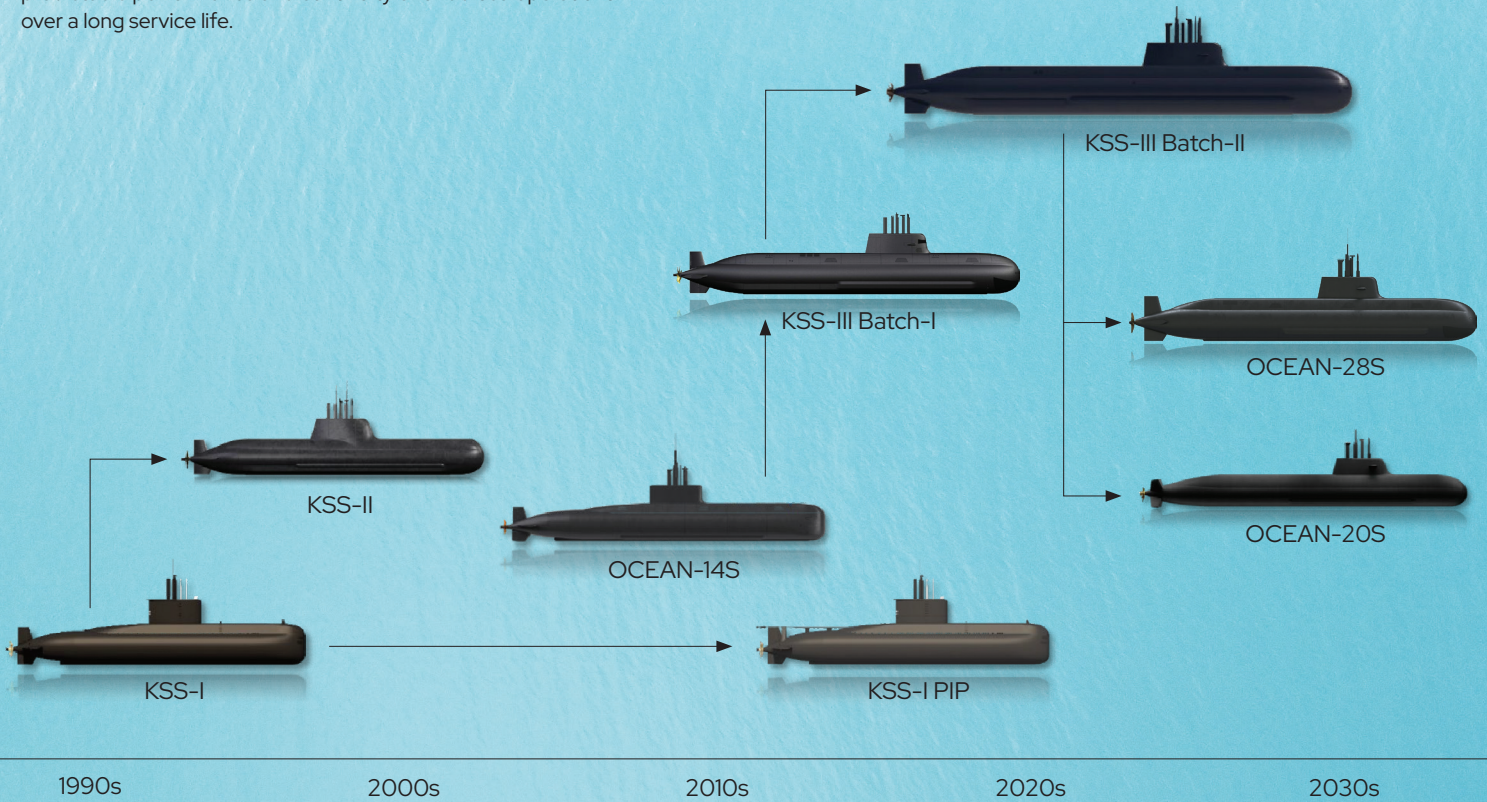
Shaping the Future of Maritime

- World's longest submerged endurance
- Vertical SLBM launch capability
- Lithium-ion battery system paired with next-generation propulsion
- Intelligent combat system

KSS-III SUBMARINE

A Track Record of High-Performance Submarines

The KSS-III is a modern, conventional submarine designed for long-range operations and sustained presence at sea, including in Arctic environments. Built on decades of operational experience, the platform emphasizes endurance, discretion, and reliability. Its mature, production-ready design enables predictable performance and continuity of undersea operations over a long service life.



Specifications



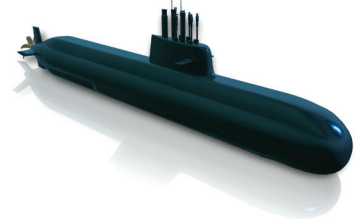
OCEAN-20S (Production Ready)

Length Overall	Abt. 79m
Displacement	Abt. 2,000 ton (Surface)
Complement	Abt. 29
Max. Speed	> 20 kts
Range	> 10,000 NM



OCEAN-28S (Production Ready)

Length Overall	Abt. 77m
Displacement	Abt. 2,800 ton (Surface)
Complement	31 ~ 50
Max. Speed	> 20 kts
Range	> 10,000 NM



OCEAN-36S (ROK Navy - KSS-III Batch-II)

Length Overall	Abt. 89m
Displacement	Abt. 3,600 ton (Surface)
Complement	33 ~ 50
Max. Speed	> 20 kts
Range	> 10,000 NM