



A new standard for the future battlespace

Our next-generation surface ship is a platform designed to adapt to the rapidly changing future battlespace, featuring reduced detection technology, multi-layered defense, modularity, and advanced intelligence capabilities.

STRATEGIC **SURFACE COMBATANT**

Ocean-74F

Features

Integration of unmanned assets

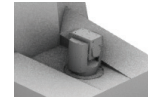


USV

UUV

UAV

Multi-platform, multi-weapon system



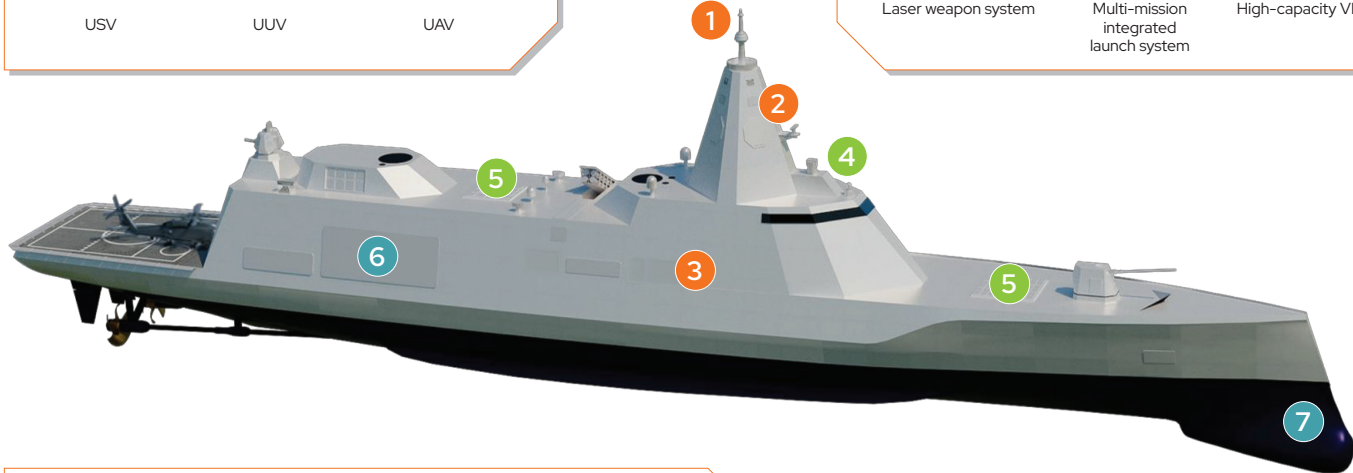
Laser weapon system



Multi-mission integrated launch system



High-capacity VLS



Enhanced stealth performance

- Minimal exposure of mounted equipment
- Simplified superstructure
- Inverted ship hull design
- Optimized hull angles



Smart combat & sensor systems

- 1 ISM (Integrated Sensor Mast)**
Integration of multiple communication antennas to simplify the external structure
- 2 AESA MFR (Active Electronically Scanned Array)**
Four-face fixed dual-band configuration to enhance detection performance
- 3 IBS (Integrated Bridge System)**
Digital integrated bridge based on cockpit type IBS consoles, optimized for two-person operation

Weapons & propulsion systems

- 4 Laser Weapon System**
Directed-energy weapon for C-UAS
- 5 Vertical Launching System**
Rapid, flexible, and survivable multi-mission strike capability through modular launching cells

Platforms for future battlespace environments

- 6 Mission Bay**
Integrates and operates diverse unmanned systems (USV, UUV, UAV) to enhance manned vessel survivability and combat power
- 7 Advanced Hull Design**
 - Improved seakeeping and reduced RCS with an inverted-bow hull
 - Improved resistance performance with a wave-piercing bow form
 - Enhanced low observability by minimizing the area of the hull's reverse-sloped surfaces



OCEAN-40F (Production Ready)

Length Overall	Abt. 124m
Beam	Abt. 15m
Design Draft	Abt. 4m
Displacement	Abt. 4,000 ton
Complement	Abt. 145
Max. Speed	> 27 kts
Range (at 15 kts)	> 5,500 NM



OCEAN-55F (Production Ready)

Length Overall	Abt. 142m
Beam	Abt. 16m
Design Draft	Abt. 4m
Displacement	Abt. 5,500 ton
Complement	Abt. 90
Max. Speed	> 27 kts
Range (at 15 kts)	> 5,000 NM



OCEAN-45F (Production Ready)

Length Overall	Abt. 130m
Beam	Abt. 16m
Design Draft	Abt. 4m
Displacement	Abt. 4,500 ton
Complement	Abt. 90
Max. Speed	> 27 kts
Range (at 15 kts)	> 4,500 NM



OCEAN-74F (Production Ready)

Length Overall	Abt. 147m
Beam	Abt. 18m
Design Draft	Abt. 5m
Displacement	Abt. 7,400 ton
Complement	Abt. 70
Max. Speed	> 27 kts
Range (at 15 kts)	> 7,000 NM