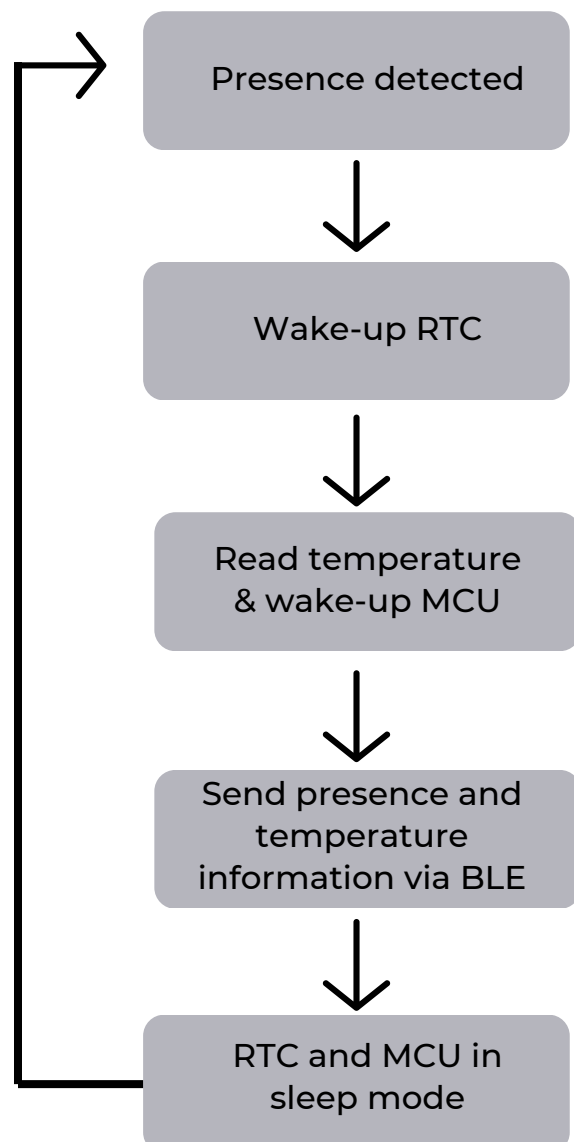


Autonomous Door and Temperature Sensor

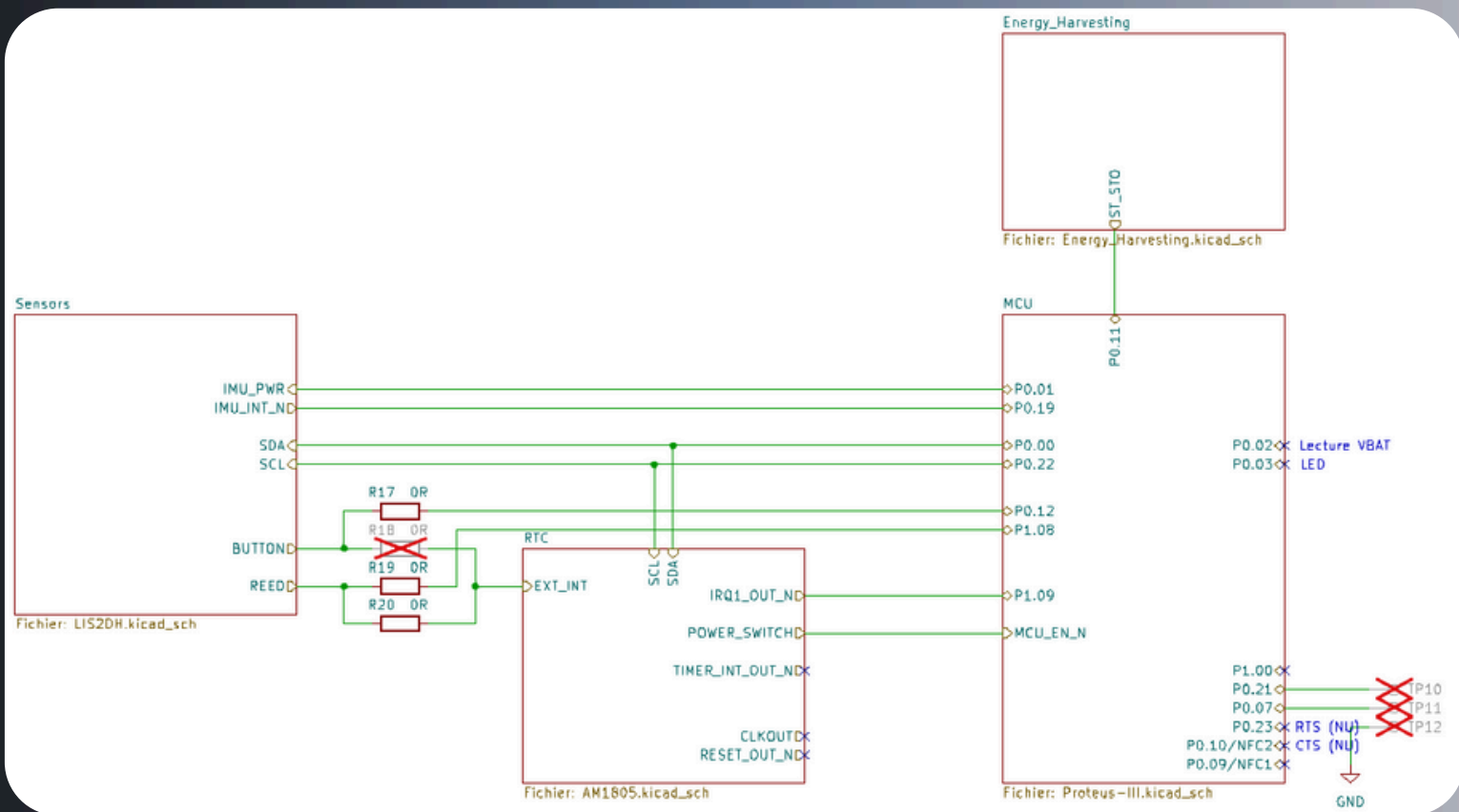
- Temperature sensor
- Presence sensor
- Fully Autonomous
- Compact design
30 x 20 x 8 mm
- Powered by a tiny photovoltaic cell and
POWENCY
150 µAh battery
- Bluetooth Low Energy communication
- Ultra low power design (400 nA consumption)

ITEN JIM Demo is a compact autonomous door and temperature sensor powered by a 60 mm² Photovoltaic cell and a 150µAh POWENCY battery. This design allows to get presence and temperature information via Bluetooth Low Energy in a ultra-low power design

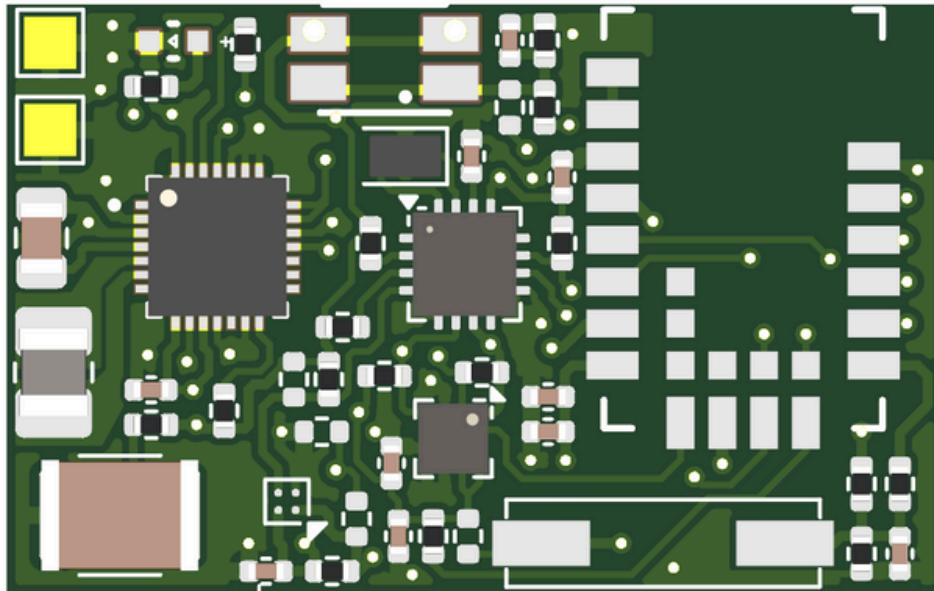
Block Diagram



Schematic



Design



Information available upon request

- Full electronic design
- Bill of materials
- Firmware source code