

FX REPLAY

ICT Judas Swing variation using Asia session H/L

Checklist and setup guide



Strategy Details

General parameters: 5m timeframe, GBPJPY, London session. May also work on pairs like GU, EU, AU.

Asia range: 9am - 4pm UTC + 9 (0:00 - 7am UTC)

Trading hours: 3am - 530 am NY time (first 2.5 hours of London session)

Trade details:

- Sweep of Asia h/l, (lower low/higher high during London session)
- 5m market structure shift (entry). Stop loss at swing high/low
- TP will be opposite side of Asia range, no trade management

Invalidations:

1. More than 50% deviation outside of Asia range (including London premarket). Can use a fib with 0, 1, -0.5 settings for this.
2. Longs must be in bottom half of asia range, shorts in top half
3. If there is not trend line liquidity, no trade



Other rules/considerations:

- For trades that last into the next day, close if opposing trigger presents
- Could consider going b/e after 1.5R

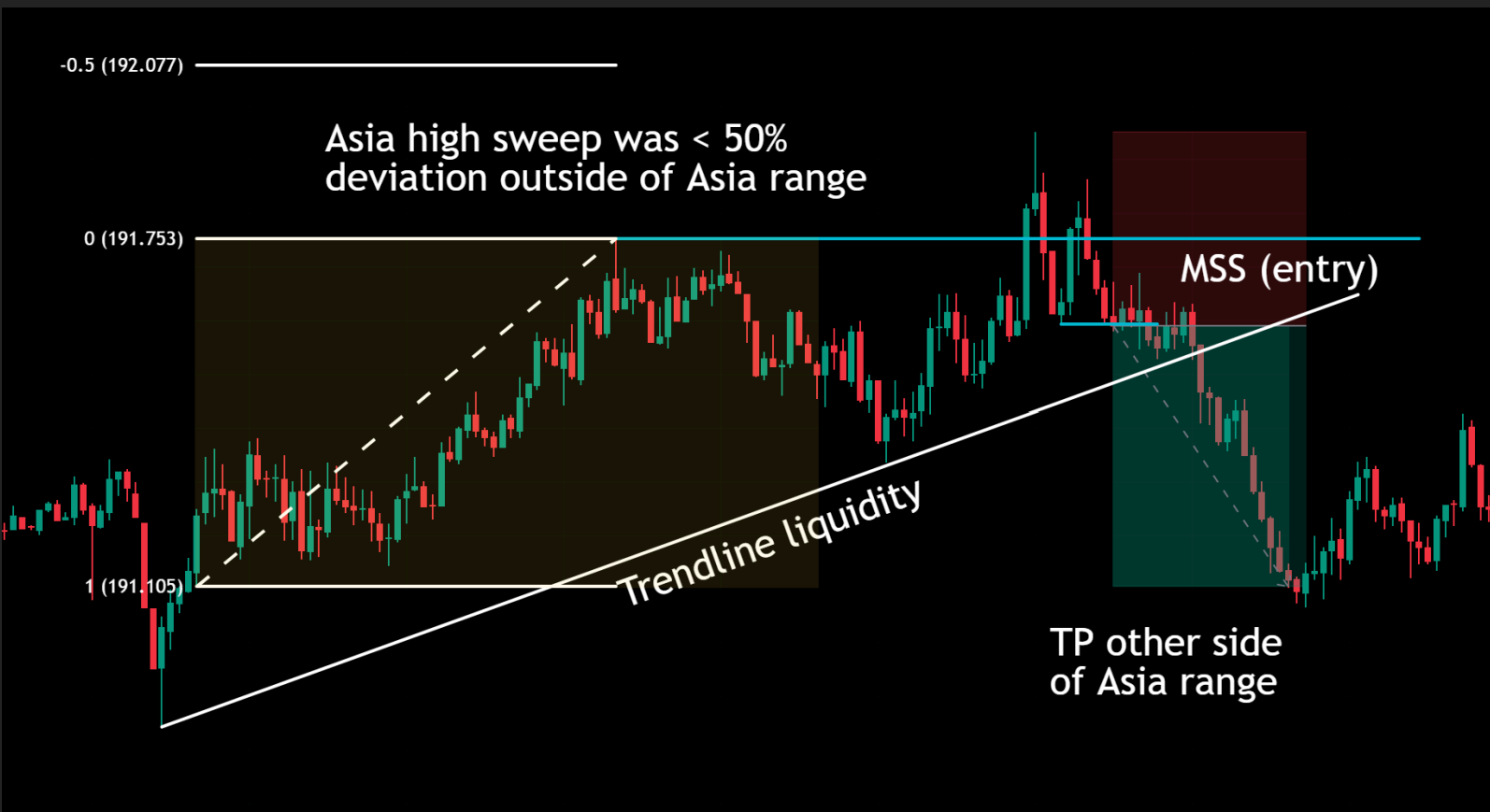
Strategy Details

Trade Checklist

- ✓ *Sweep of Asia H/L during London session*
- ✓ *< 50% deviation outside of Asia range*
- ✓ *Trend line liquidity present*
- ✓ *5m market structure shift (Entry)*
Longs at or below midpoint of Asia range, shorts at or above midpoint of Asia range
- ✓ *TP other side of Asia range*

Remember, if any of the parameters are missing, the trade quality is reduced. Aim to only take A+ setups!

Examples





Now that you have a profitable strategy

it's time to practice! Luckily, we have a platform you can do that for FREE.

[Start backtesting for free](#)

What are you waiting for?

You have your strategy. Now all you have to do is test it! [Start collecting data on your new strategy for FREE by clicking here](#)

