

THREE PHASE CT (SM306)

SMART CT METER



PRODUCT OVERVIEW

The Three-Phase Smart CT Meter is a high-accuracy metering device designed for utility-scale energy monitoring. It features dual plug-and-play communication modules, real-time data logging, and advanced anti-tamper detection, ensuring reliable performance and secure operation. With remote communication capabilities and compliance with DLMS/COSEM protocols, it enables seamless integration into smart grid systems.

PRODUCT FEATURES

- Dual plug-and-play communication modules.
- Large LCD display for real-time meter monitoring.
- Non-volatile memory for data retention without a backup battery.
- Support for local and remote firmware upgrades.
- Anti-dropping design for terminal holes and screws.

STANDARDS AND COMPLIANCE

- **IEC 62052-11:**
General requirements, tests, and test conditions for electricity metering equipment (a.c).
- **IEC 62053-22:**
Specific requirements for static meters for AC active energy (classes 0.1S, 0.2S, and 0.5S).
- **IEC 62053-24:**
Specific requirements for static meters measuring fundamental component reactive energy (classes 0.5S, 1S, 1, 2, and 3).
- **DLMS/COSEM:**
Device Language Message Specification and Companion Specification for Energy Metering.

Operating Voltage	3×57.7/100~3×240/415V
Voltage Range	0.8Un~1.2Un
Current rating	1(10)A
Starting current	Active Energy: 0.1% of Ib Reactive Energy: 0.4% of Ib
Frequency	50Hz±5%
Accuracy Class	Active Energy: CL 0.5S 10000 imp/kWh Reactive Energy: CL 1.0 10000 imp/kvarh

KEY FUNCTIONS

MEASUREMENTS

- kWh/kvarh (import, export, and absolute)
- Maximum kW/kvar demand (import, export)
- Cumulative kW/kvar demand (import, export)
- Per-phase instantaneous values: voltage, current, phase angle
- Total and per-phase instantaneous values: active power, reactive power, power factor
- Current date and time display
- Frequency measurement
- Optional neutral line current measurement

TARIFF FUNCTIONS

- Time of Use (TOU) measurement for import/export energies (kWh/kvarh) and import/export demands (kW/kvar), supporting up to 4 tariffs, 12 seasons, 12 weeks, 16 switches, and 100 special days.
- Up to 32 energy tariff and 32 demand tariff registers.
- Battery or supercapacitor to maintain clock and calendar functionality.

LCD DISPLAY

- 8-digit LCD with three decimal points for power and demand, and two decimal points for energy; decimal points are programmable.
- LCD size exceeds 14 cm², with digit height of 10mm.

LOAD PROFILES

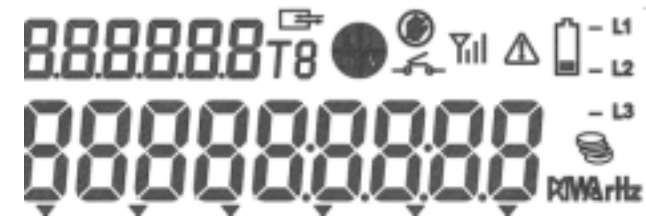
- Records up to 100 days of 15-minute load profiles with 16 channels, on a FIFO basis.
- Configurable load profile intervals from 1 to 60 minutes.

BILLING

- Automatic monthly billing reset at 00:00:00 midnight on the 1st of each month, with configurable settings.
- Manual billing reset via demand reset button.
- Remote billing reset from the AMI central system.
- Storage of up to 12 months of billing data in the meter's memory.

POWER QUALITY

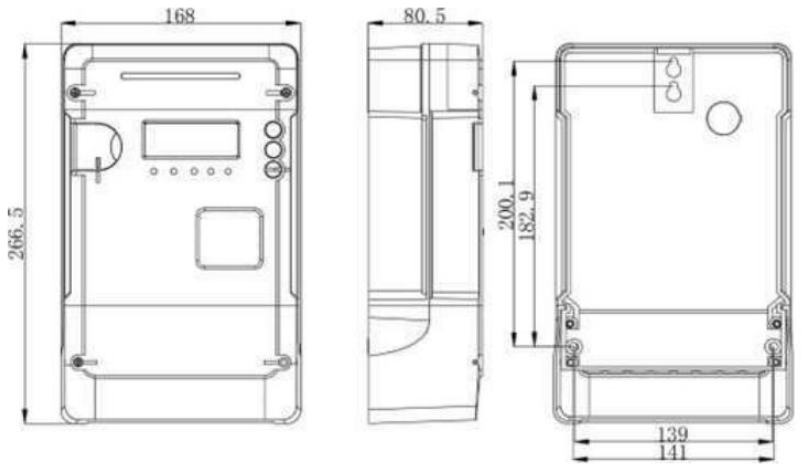
- Voltage unbalance detection.
- Current reverse detection.
- Over-voltage and under-voltage detection with configurable time thresholds.
- Long and short outage detection with configurable time thresholds.
- Over-current detection with configurable time thresholds.
- All power quality events are recorded in the meter's memory.



- Supports both scrolling and manual modes for displaying items, accessible via a push button.

ANTI-TAMPER FEATURES

- Detection of tampering events such as meter cover, terminal, and module cover opening, external magnetic fields, bypassing, etc.
- Tamper alarms displayed on the LCD and LED indicators.
- All tamper events are logged in the meter's memory and reported remotely to the AMI central system



COMMUNICATION

- Full compliance with DLMS/COSEM and IEC 62056-21 standards for optical ports.
- Plug-and-play modules for PLC (G3, BPLC, HPLC), RF, 2G, 3G, and 4G communication.
- RF/2G/3G/4G module with a supercapacitor capable of sending a "last gasp" message to the AMI central system.

TECHNICAL SPECIFICATIONS

EMC	Electrostatic discharges(Contact discharges)	8kV
	Electrostatic discharges(Air discharges)	15kV
	Fast transient burst test	4kV
	Surge immunity test	6kV
	Electromagnetic RF field (80MHz to 2000MHz)	10V/m(with current), 30V/m(without current)
Environment	Temperature Range : -40 °C ~ +70 °C Humidity: Up to 95%	

Connection	L1V1L1L2V2L2L3V3L3NN	Protective class	II
Real-time Clock Accuracy		Degree of protection	IP54
	0.5s/Day	Relay	Auxiliary relay:5A/250VAC