

MATREX DC

MAIN CHARACTERISTICS

Applications	Grazing Street lighting
Optic	<p>Layer optic: multiple micro-optical architecture based on metallized reflector and multi-channel led source control.</p> <p>Symmetrical Optic for street lighting: wide, medium, narrow Counterbeam Optic (right or left) for street lighting. Pro-Beam Optic (right or left) for street lighting. Optical variants: performance, low glare, plus</p> <p>Colour temperature: 4000K, 3000K (others in option) CRI ≥ 70</p>
Max Lumen output	2750lm
Insulation class	F-DA: Classe III DALI: Classe II
Protection degree	IP66/IP67 IK10 total
Dimensions	See the drawing
Weight	max 1kg
Mounting	<p>Minimum installation height 0.5m Fixing options: on road guardrails (without modifying the structure), safety barrier, recessed mounting. See detail in the dedicated sections</p>
Inclination	<p>Screw fixing on guardrail: 0° ÷ -10° Fixing the clamp on the guardrail: -10° ÷ +10° Fixing on concrete support: -10° ÷ +15°</p>
Pan	<p>Screw fixing on guardrail: ±2.5° Fixing the clamp on the guardrail: ±10° Fixing on concrete support: ±10°</p>
Power Supply	External power supply 230Vac/48Vdc, to be installed in a separate box. No.1 power supply per group of appliances
Operating temp.	-40°C / +50°C
Storage temp	-40°C / +80°C
Main reference standards	EN 60598-1, EN 60598-2-3, EN 62471, EN 55015, EN 61547, EN 61000-3-2, EN-61000-3-3

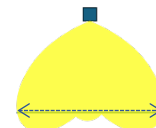
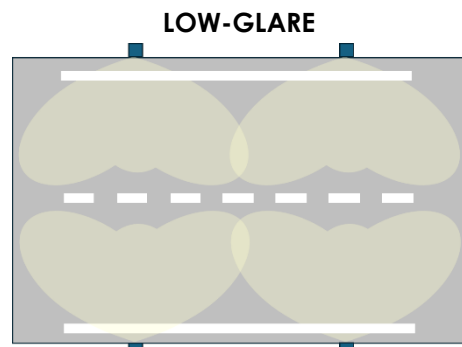
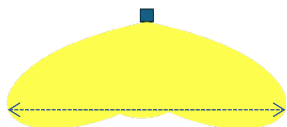
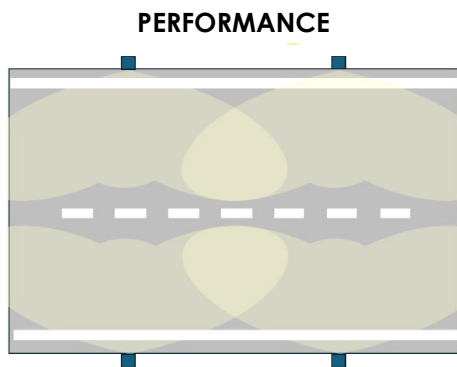
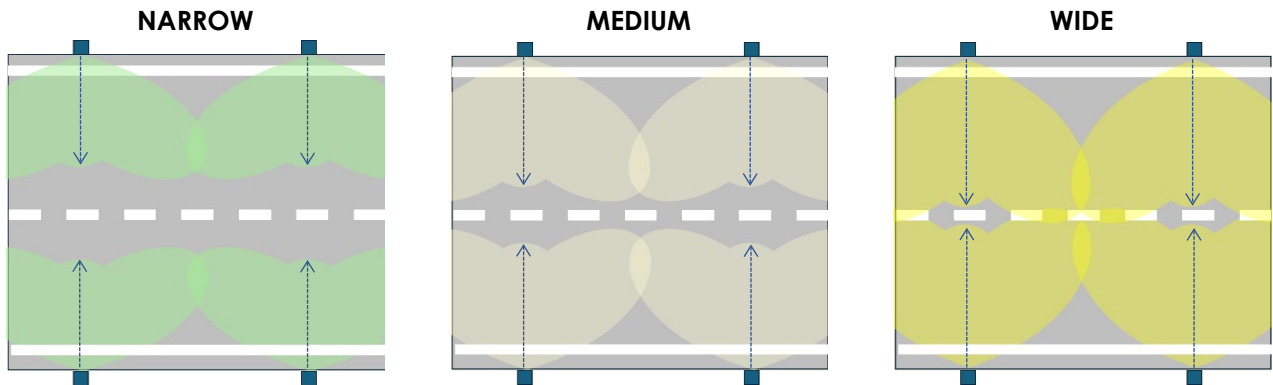


ELECTRICAL CHARACTERISTICS

Rated voltage	48Vdc +10% / -15%
Max consumption	25W @48Vdc. Excluding plant losses
DC Mains connection	<p>Integrated cable: F-DA: H07RN-F, 2 x 1.5mm² DALI: H07RN-F, 4 x 1.5mm²</p> <p>L=1.5m (Other lengths on request)</p> <p>Optional: IP66/68 M connector</p>
Control system	<p>F: Fixed power not dimmable DA: Integrated automatic dimming (virtual midnight) with default profile. DALI : Digital dimming interface (by external DALI driver)</p>
Optical configuration	Preconfigured in the factory.
Profile configuration DA	Preconfigured in the factory.
Optical unit lifetime (Tq=25°C)	<p>>100.000hr L90B10 >100.000hr L90, TM-21</p>

MATERIALS	
Body	Die-cast aluminium UNI EN1706. Powder coated with very low copper content.
Fixing Bracket	Stainless steel AISI 316L
Optic	Polycarbonate, metalized with high-efficiency aluminium
Screen	Polycarbonate, protected from UV rays. Scratch-resistant and weather-resistant.
Cable gland	Metallic - IP68
Gasket	Moulded Silicone
Colour	Graphite - Cod. 01

AVAILABLE OPTICS



Ideal For Micro-Adjustments In The Field

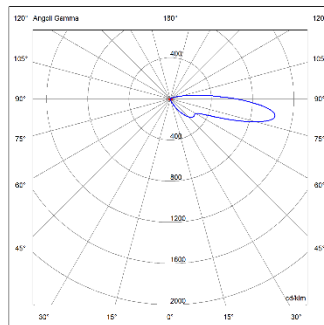
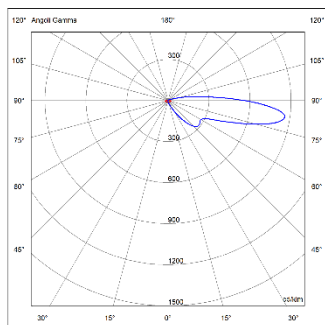
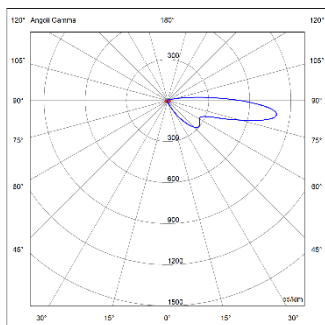


PHOTOMETRICAL DISTRIBUTION

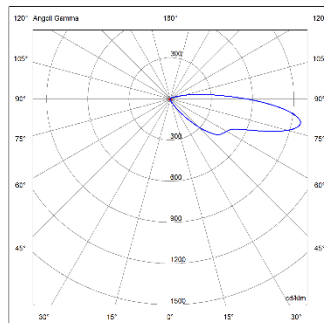
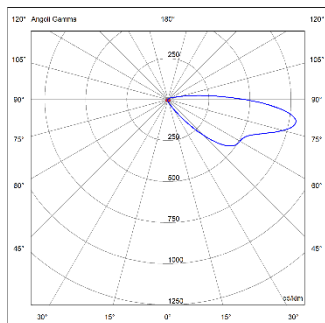
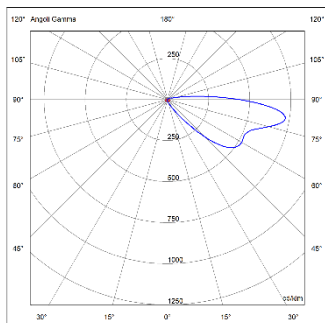
NARROW

MEDIUM

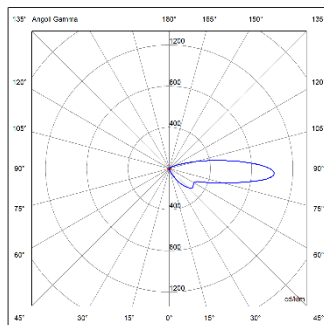
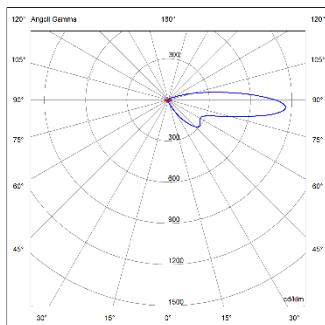
WIDE



STANDARD



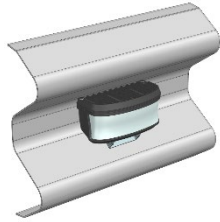
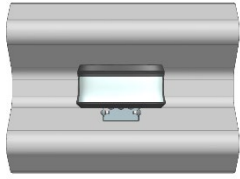
**LOW
GLARE**



PLUS

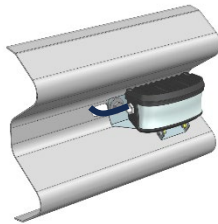
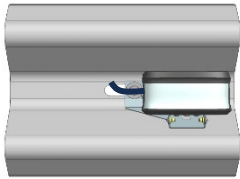


INSTALLATION ON GUARD-RAIL



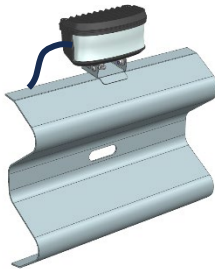
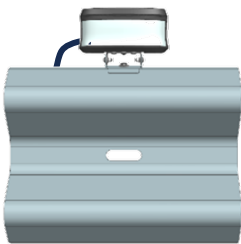
*Central mounting
on guardrail*

*Cable entry
rear*



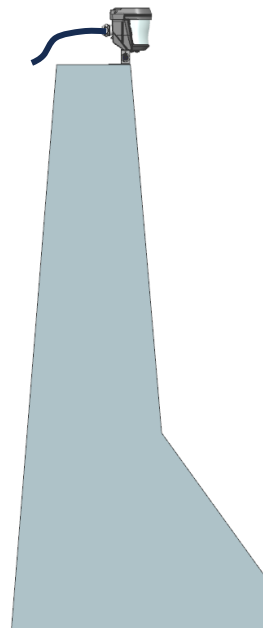
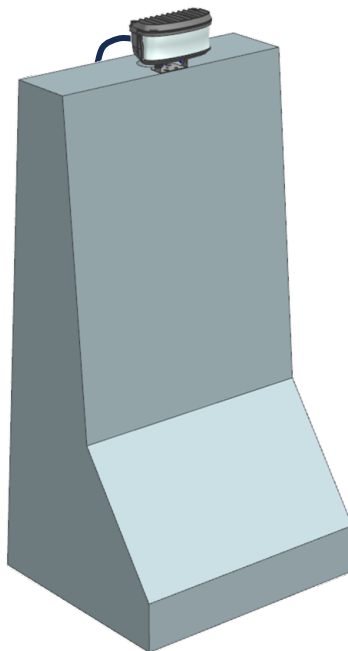
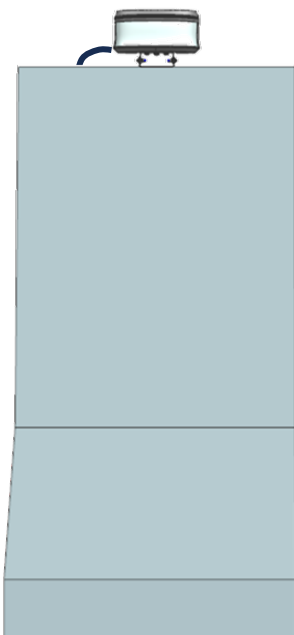
*Central mounting
on guardrail*

*Cable entry
lateral*

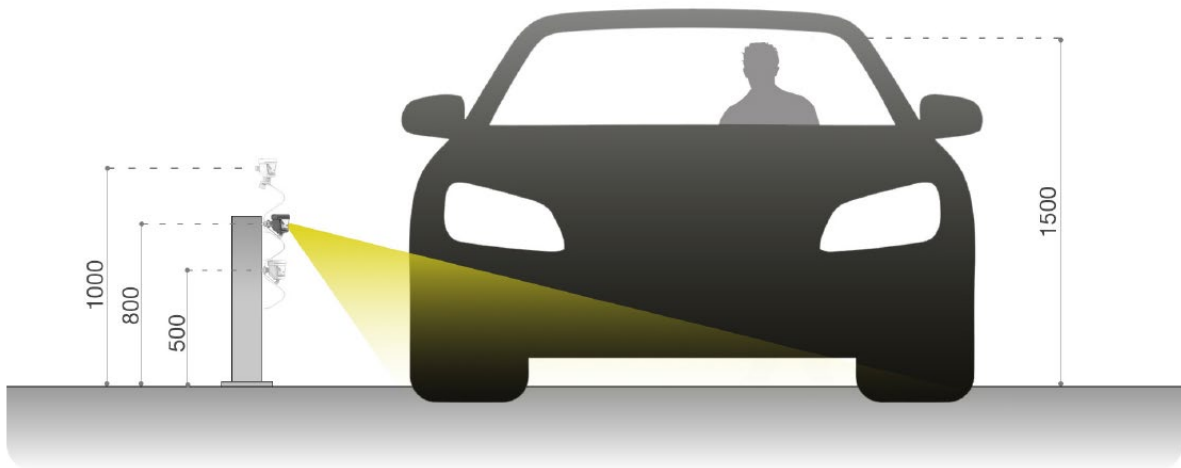


*Upper mounting
on guardrail*

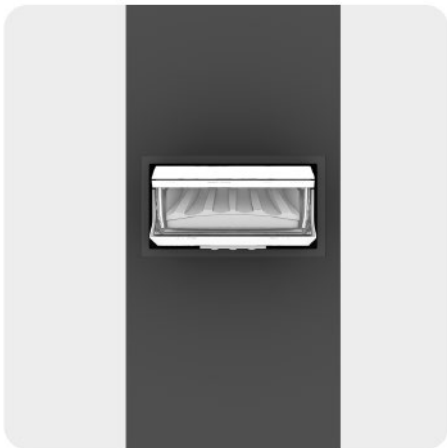
SAFETY BARRIER INSTALLATION



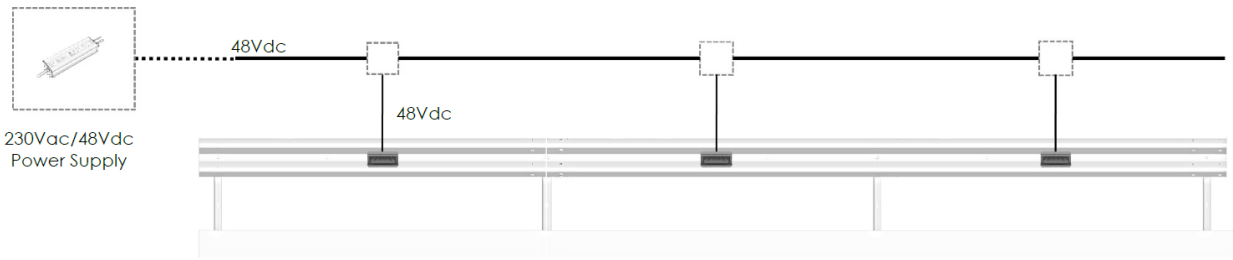
TYPICAL HEIGHT OF MOUNTING



URBAN INSTALLATION



EXAMPLE OF CONNECTION

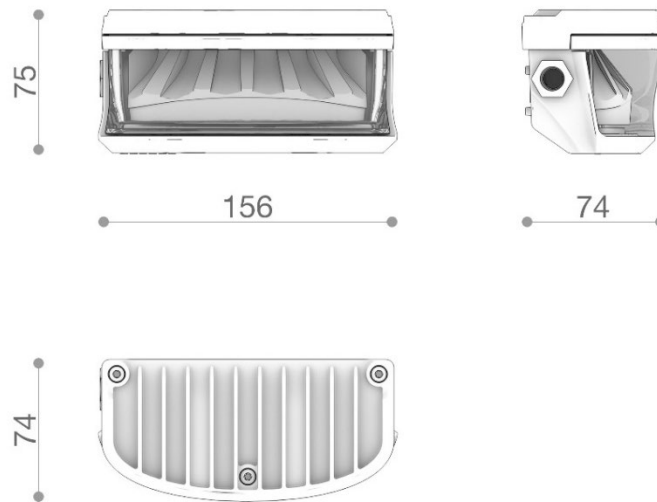


NOTES:

The sizing of the 48Vdc power supply is defined by AEC.
 The 48Vdc power supply must be enclosed in a separate box.

DIMENSIONAL DRAWING

LATERAL CABLE INPUT



REAR CABLE INPUT

