

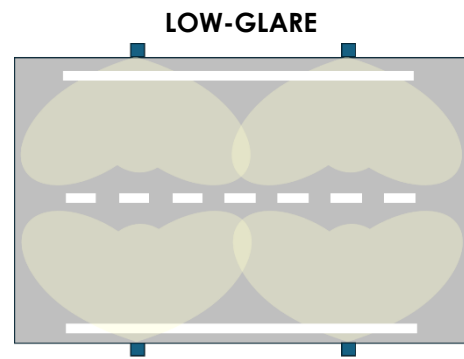
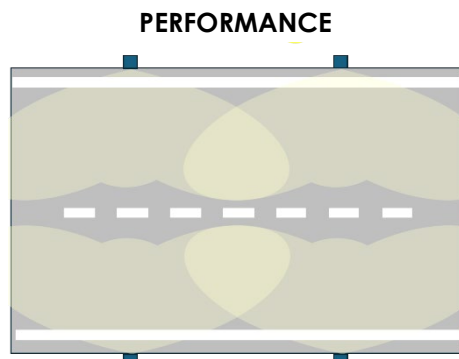
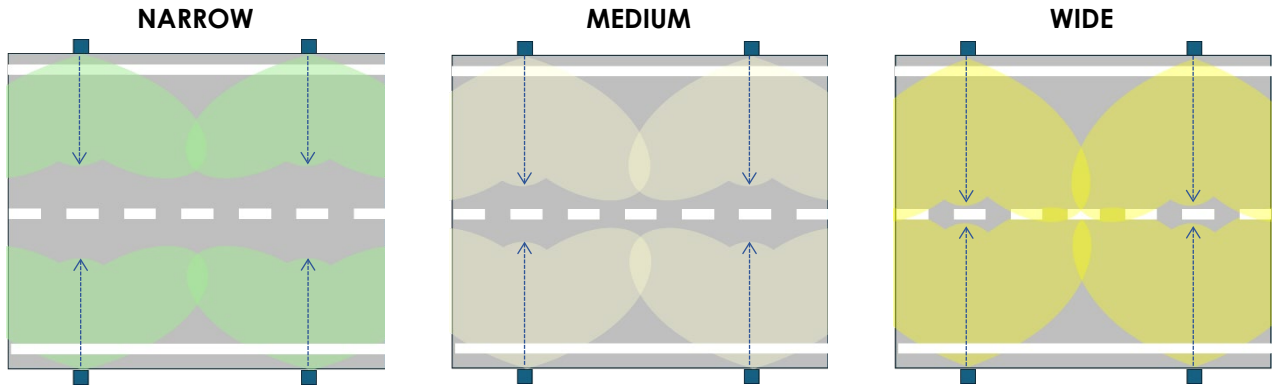
## MATREX DC DYNAMIC

### MAIN CHARACTERISTICS

<b>Applications</b>	Grazing Street lighting
<b>Optic</b>	<p>Dynamic layer optic: Multi-micro-optics architecture based on a metallized reflector and multi-channel control of the LED source with on-site dynamic adjustment</p> <p>Symmetrical Optic for street lighting: wide, medium, narrow Counterbeam Optic (right or left) for street lighting. Pro-Beam Optic (right or left) for street lighting. Optical variants: performance, low glare, plus</p> <p>Colour temperature: 4000K, 3000K (others in option)   CRI ≥ 70 Optional: Tunable White, additional decorative RGBW module.</p>
<b>Max Lumen output</b>	2670lm
<b>Insulation class</b>	III
<b>Protection degree</b>	IP66/IP67   IK10 total
<b>Dimensions</b>	See the drawing
<b>Weight</b>	max 1kg
<b>Mounting</b>	<p>Minimum installation height 0.5m Fixing options: on road guardrails (without modifying the structure), safety barrier, recessed mounting. See detail in the dedicated sections</p>
<b>Inclination</b>	<p>Screw fixing on guardrail: 0° ÷ -10° Fixing the clamp on the guardrail: -10° ÷ +10° Fixing on concrete support: -10° ÷ +15°</p>
<b>Pan</b>	<p>Screw fixing on guardrail: ±2.5° Fixing the clamp on the guardrail: ±10° Fixing on concrete support: ±10°</p>
<b>Power Supply</b>	External power supply 230Vac/48Vdc, to be installed in a separate box. No.1 power supply per group of appliances
<b>Operating temp.</b>	-40°C / +50°C
<b>Storage temp</b>	-40°C / +80°C
<b>Main reference standards</b>	EN 60598-1, EN 60598-2-3, EN 62471, EN 55015, EN 61547, EN 61000-3-2, EN-61000-3-3
<b>ELECTRICAL CHARACTERISTICS</b>	
<b>Rated voltage</b>	48Vdc +10% / -15%
<b>Max consumption</b>	25W @48Vdc. Excluding plant losses
<b>Connection</b>	<p>Integrated cable: F-DA-CASAMBI: H07RN-F, 2 x 1.5mm<sup>2</sup> DMX-RDM: Hybrid cable (see dedicated section)</p> <p>L=1.5m (Other lengths on request)</p> <p>Optional: IP66/68 M connector</p>
<b>Control system</b>	<p>F: Fixed power not dimmable DA: Integrated automatic dimming (virtual midnight) with default profile. DMX-RDM: integrated DMX-RDM digital control interface. CASAMBI: Integrated wireless module for remote control.</p>
<b>Optical configuration</b>	Factory preconfigured and field configurable (NFC, CASAMBI, DMX)
<b>Profile configuration DA</b>	Factory and field configurable (NFC, CASAMBI, DMX)
<b>Optical unit lifetime (Tq=25°C)</b>	<p>&gt;100.000hr L90B10 &gt;100.000hr L90, TM-21</p>

MATERIALS	
<b>Body</b>	Die-cast aluminium UNI EN1706. Powder coated with very low copper content.
<b>Fixing Bracket</b>	Stainless steel AISI 316L
<b>Optic</b>	Polycarbonate, metalized with high-efficiency aluminium
<b>Screen</b>	Polycarbonate, protected from UV rays. Scratch-resistant and weather-resistant.
<b>Cable gland</b>	Metallic - IP68
<b>Gasket</b>	Moulded Silicone
<b>Colour</b>	Graphite - Cod. 01

**AVAILABLE OPTICS**



*Ideal For Micro-Adjustments In The Field*

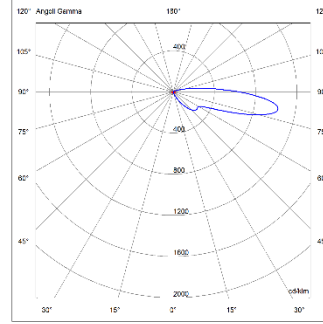
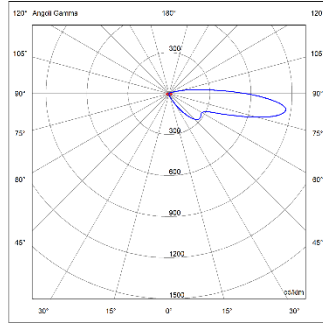
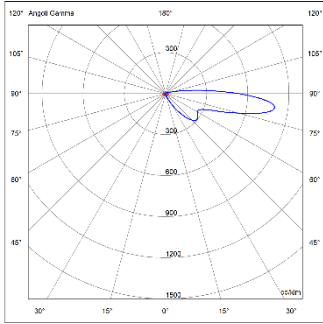


# PHOTOMETRICAL DISTRIBUTION

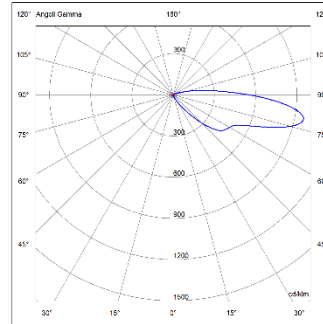
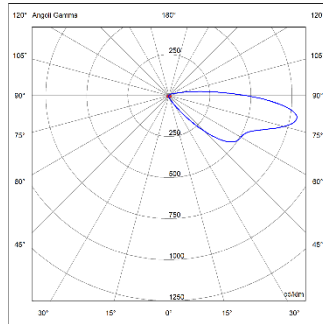
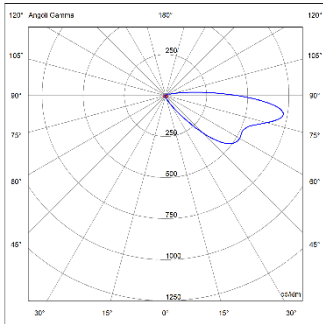
## NARROW

## MEDIUM

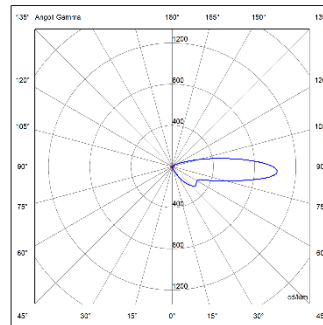
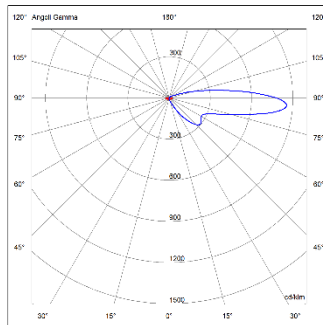
## WIDE



**STANDARD**



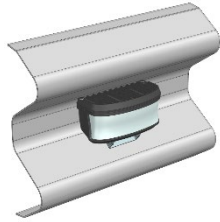
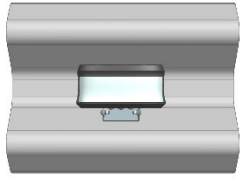
**LOW  
GLARE**



**PLUS**

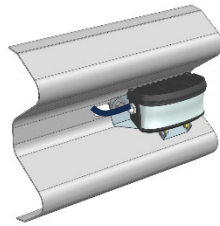
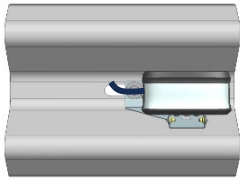


**INSTALLATION ON GUARD-RAIL**



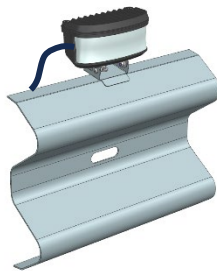
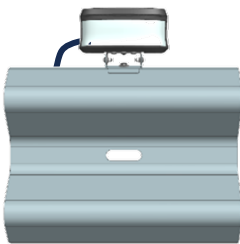
*Central mounting  
on guardrail*

*Cable entry  
rear*



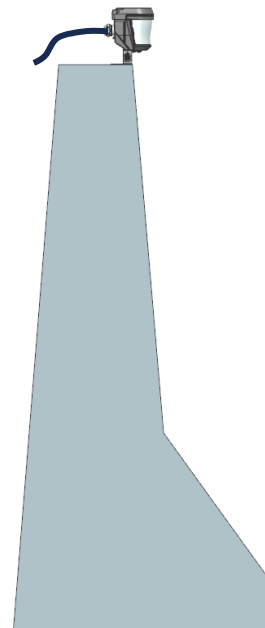
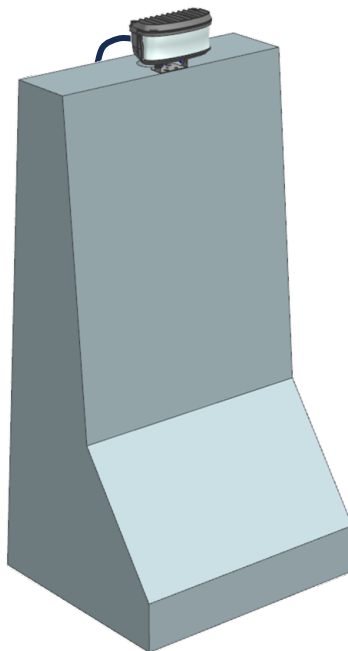
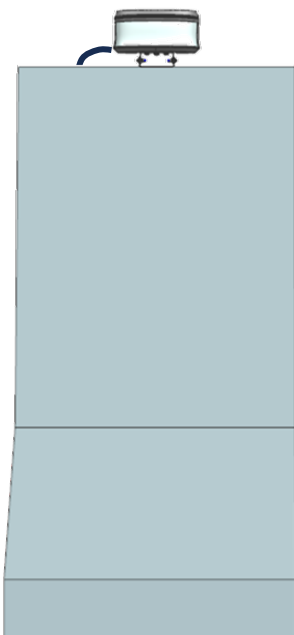
*Central mounting  
on guardrail*

*Cable entry  
lateral*

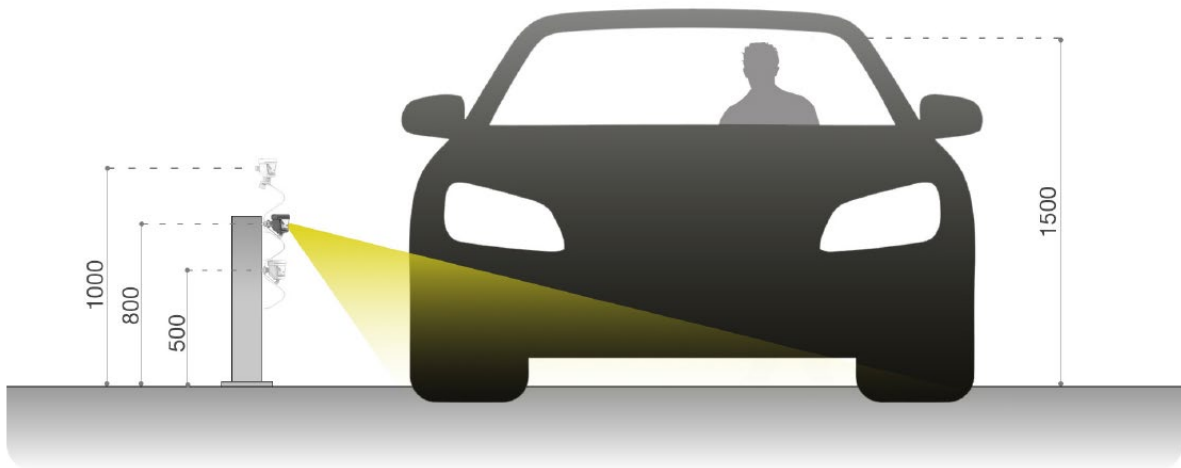


*Upper mounting  
on guardrail*

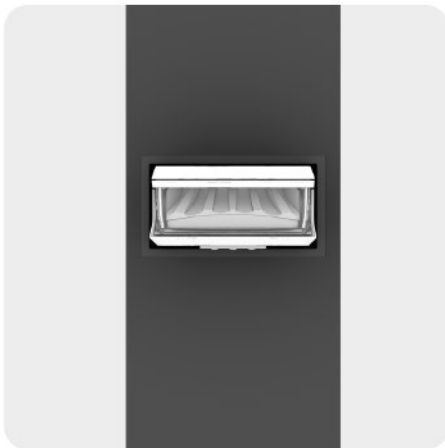
**SAFETY BARRIER INSTALLATION**



### TYPICAL HEIGHT OF MOUNTING

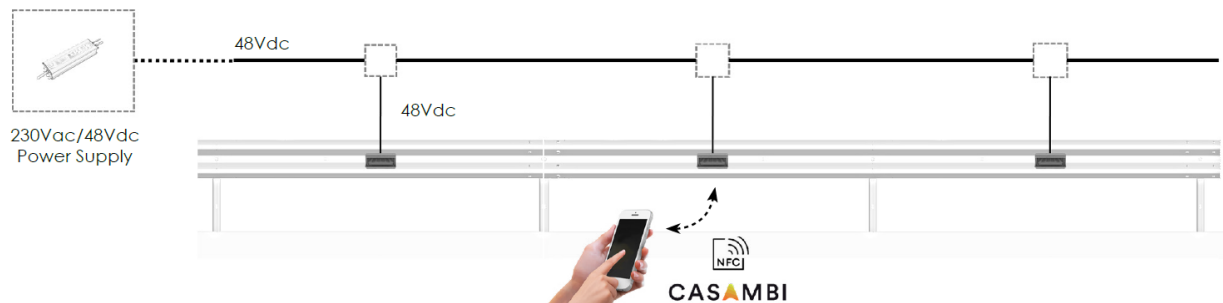


### URBAN INSTALLATION



**EXAMPLE OF CONNECTION**

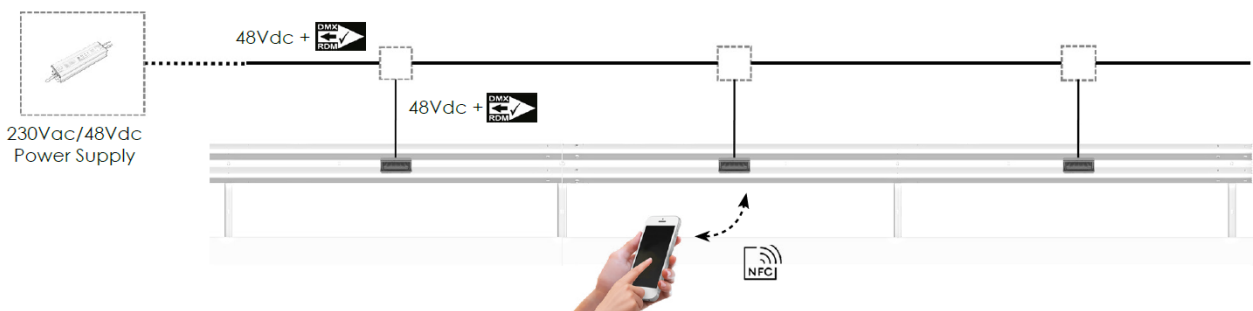
**Scheme for version FIXED | DIM-AUTO | CASAMBI**



NOTES:

The sizing of the 48Vdc power supply is defined by AEC.  
 The 48Vdc power supply must be enclosed in a separate box.

**Scheme for version DMX-RDM**



NOTES:

The sizing of the 48Vdc power supply is defined by AEC.  
 The 48Vdc power supply must be enclosed in a separate box.

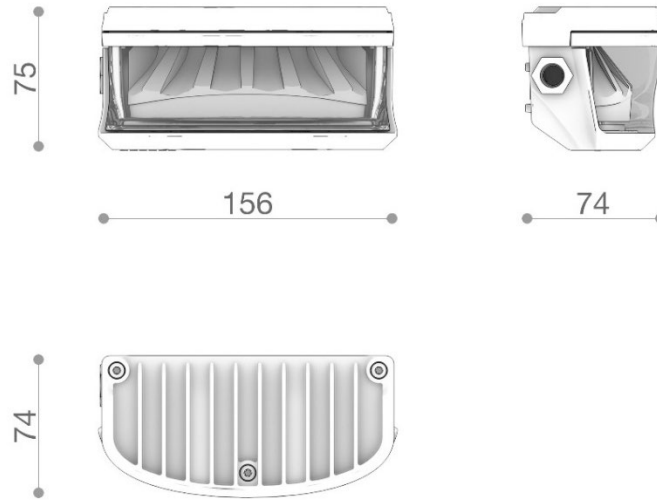
**Detail Integrated cable (Version DMX-RDM)**

CARATTERISTICHE ELETTRICHE		IMMAGINE
Type	LiH(2YCH)11Y	
Operating voltage	450Vac / 750Vac	
Maximum current flow rate	15A	
Operating temperature	-40°C / +70°C	
Sheath color	Black	
Smoke emission	LSOH (Low-Smoke Zero Halogen)	
External diameter	11.2 ± 0.3mm	
Cable Section	DMX: 2x0,35 mm <sup>2</sup> + shield Mains: 2x1.5mm <sup>2</sup> (CL.II)   3x1.5mm <sup>2</sup> (CL.I)	
Bending radius	12xD	



**DIMENSIONAL DRAWING**

**LATERAL CABLE INPUT**



**REAR CABLE INPUT**

