

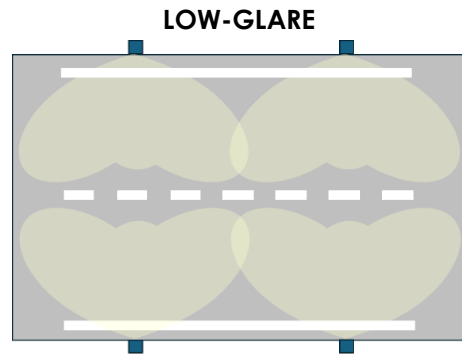
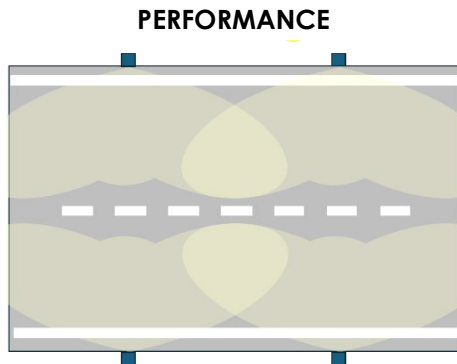
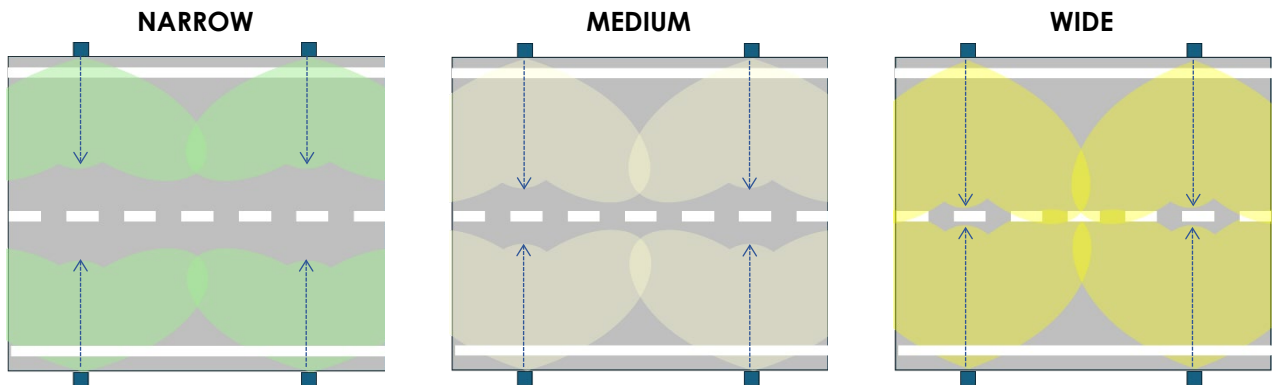
MATREX AC

MAIN CHARACTERISTICS

| | |
|--|--|
| Applications | Grazing Street lighting |
| Optic | <p>Layer optic: multiple micro-optical architecture based on metallized reflector and multi-channel led source control.</p> <p>Symmetrical Optic for street lighting: wide, medium, narrow Counterbeam Optic (right or left) for street lighting. Pro-Beam Optic (right or left) for street lighting. Optical variants: performance, low glare, plus</p> <p>Colour temperature: 4000K, 3000K (others in option) CRI ≥ 70</p> |
| Max Lumen output | 2750lm |
| Insulation class | II |
| Protection degree | IP66/IP67 IK10 total |
| Dimensions | See the drawing |
| Weight | max 1kg |
| Mounting | <p>Minimum installation height 0.5m Fixing options: on road guardrails (without modifying the structure), safety barrier, recessed mounting. See detail in the dedicated sections</p> |
| Inclination | <p>Screw fixing on guardrail: 0° ÷ -10° Fixing the clamp on the guardrail: -10° ÷ +10° Fixing on concrete support: -10° ÷ +15°</p> |
| Pan | <p>Screw fixing on guardrail: ±2.5° Fixing the clamp on the guardrail: ±10° Fixing on concrete support: ±10°</p> |
| Power Supply | LED Driver 230V external constant current, to be installed in a separate IP box (not included). N. 1 LED driver for single appliance. |
| Operating temp. | -40°C / +50°C |
| Storage temp | -40°C / +80°C |
| Main reference standards | EN 60598-1, EN 60598-2-3, EN 62471, EN 55015, EN 61547, EN 61000-3-2, EN-61000-3-3 |
| | |
| ELECTRICAL CHARACTERISTICS | |
| Rated voltage | External power supply 220-240V 50/60hz constant current. |
| Max consumption | 24W including secondary AC power supply leaks. |
| Connection | Integrated cable 3x1.5mm ² Length=1.5m (other lengths upon request) Optional: IP66/68 M connector. |
| Control system | Depending on the characteristics of the external power supply: F: Fixed power not dimmable DA: Integrated automatic dimming (virtual midnight) with default profile. DALI / D4i : Digital dimming interface DALI /D4i |
| Optical configuration | Preconfigured in the factory. |
| Profile configuration DA | Factory and field configurable (NFC). |
| Optical unit lifetime (Tq=25°C) | >100.000hr L90B10 >100.000hr L90, TM-21 |

| MATERIALS | |
|-----------------------|---|
| Lower | Die-cast aluminium UNI EN1706. Powder coated with very low copper content. |
| Fixing Bracket | Stainless steel AISI 316L |
| Optic | Polycarbonate, metallized with high-efficiency aluminum. |
| Screen | Polycarbonate, protected from UV rays. Scratch-resistant and weather-resistant. |
| Cable gland | Metallic - IP68 |
| Gasket | Moulded Silicone |
| Colour | Graphite - Cod. 01 |

AVAILABLE OPTICS



Ideal For Micro-Adjustments In The Field

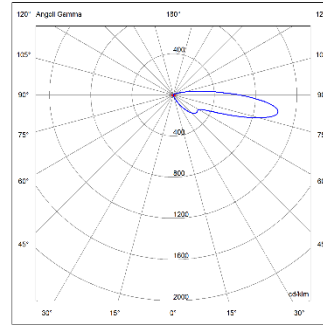
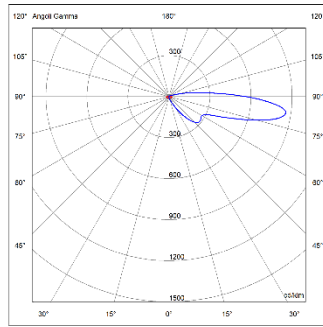
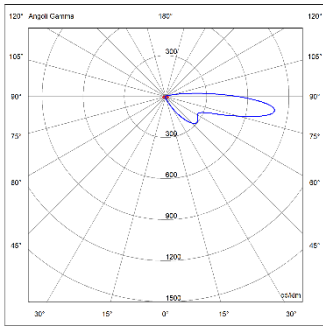


PHOTOMETRICAL DISTRIBUTION

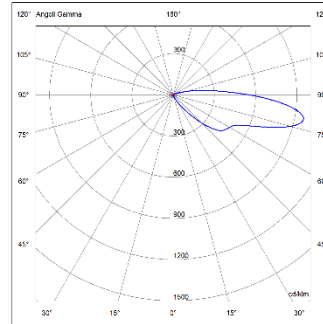
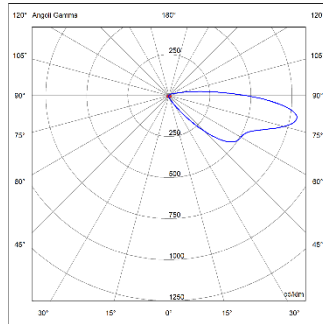
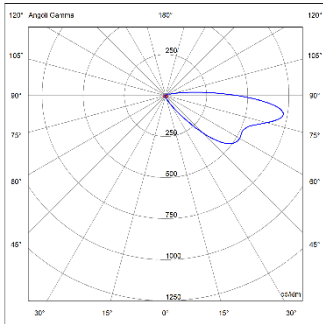
NARROW

MEDIUM

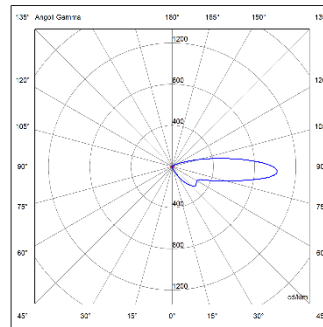
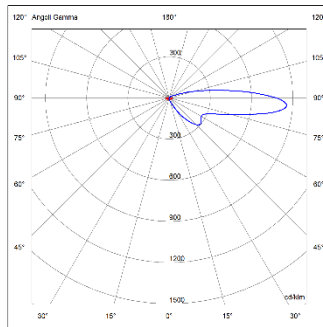
WIDE



STANDARD



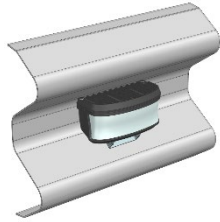
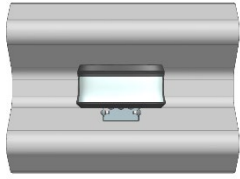
**LOW
GLARE**



PLUS

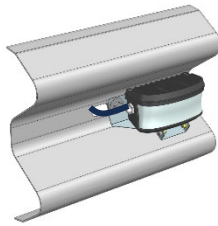
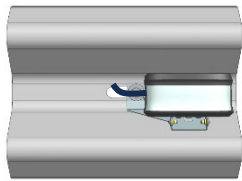


INSTALLATION ON GUARD-RAIL



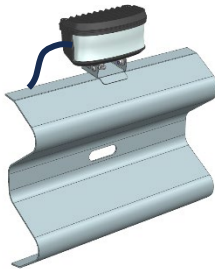
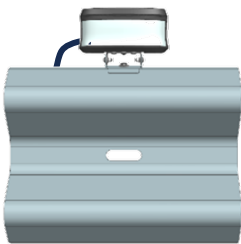
*Central mounting
on guardrail*

*Cable entry
rear*



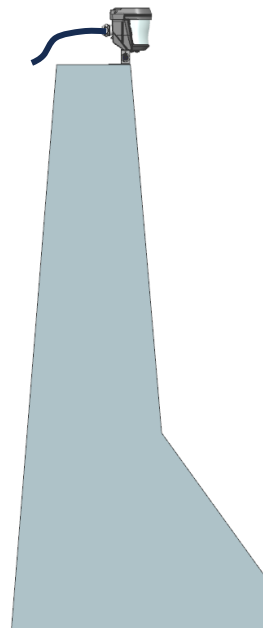
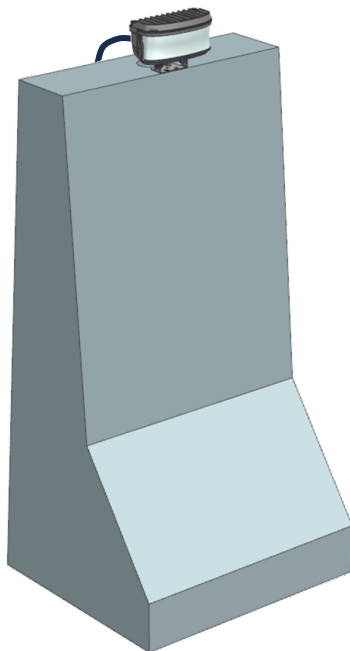
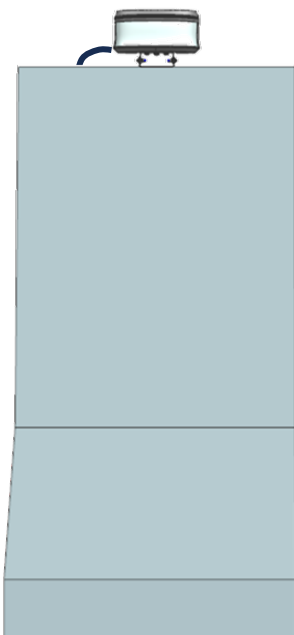
*Central mounting
on guardrail*

*Cable entry
lateral*

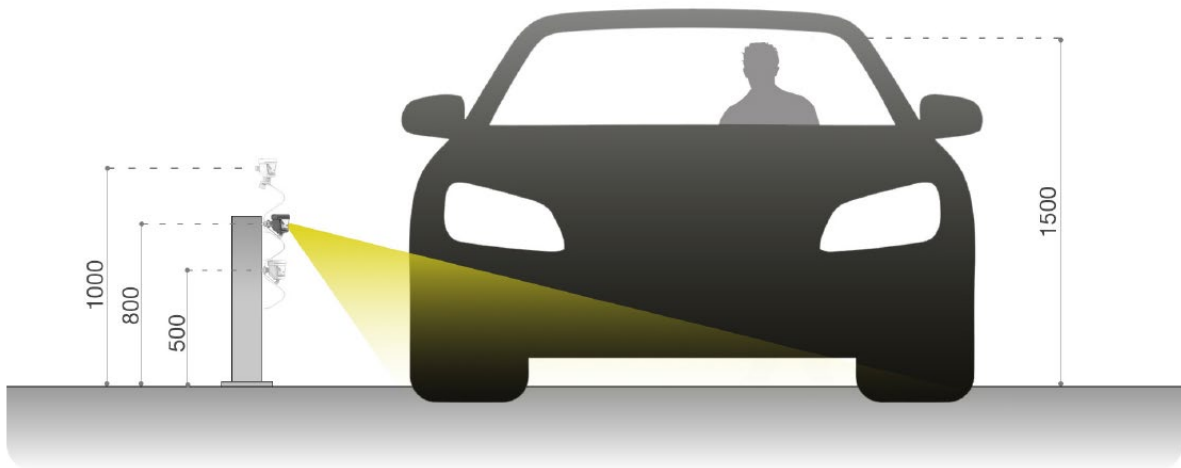


*Upper mounting
on guardrail*

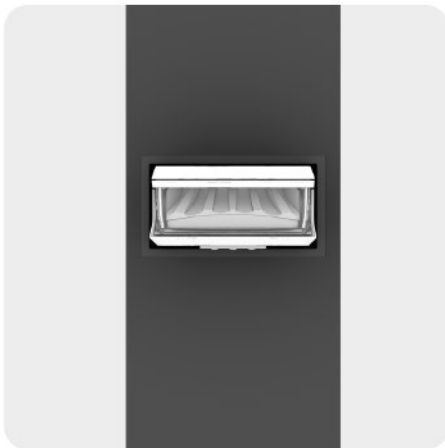
SAFETY BARRIER INSTALLATION



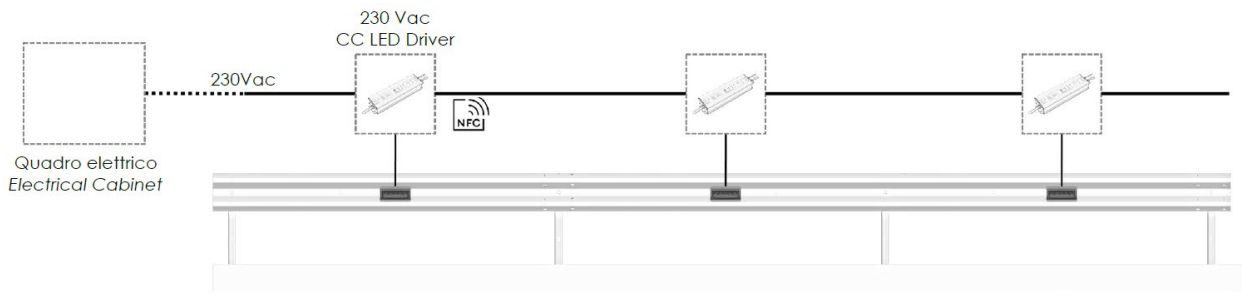
TYPICAL MOUNTING HEIGHT



URBAN INSTALLATION



EXAMPLE OF CONNECTION



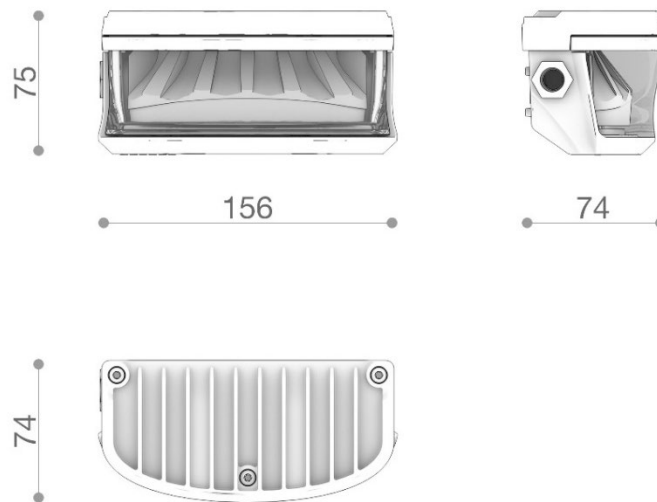
NOTES:

The sizing of the 230V constant current LED Driver is defined by AEC.

The constant current power supply must be enclosed in a separate IP box (not included).

DIMENSIONAL DRAWING

LATERAL CABLE INPUT



REAR CABLE INPUT

