

# BUILDING THE FUTURE

Company Profile



GENERIC ENGINEERING  
TECHNOLOGIES w.l.l.

جنريك للتقنيات الهندسية  
والمقاولات ذ.م.م.





# Table of Contents

<b>01</b>	GET We Deliver	7
<b>02</b>	GET The Service You Need	9
<b>03</b>	GET Health, Safety and the Environment	11
<b>04</b>	GET Accomplishments	13
<b>05</b>	GET Resources	75



## **GET WE DELIVER**

Based in Doha, Qatar, and with offices in Lebanon, Oman and Greece, Generic Engineering Technologies (GET) has been designing and building substantial projects since 2006.

Today, our growing number of clients counts on a remarkably high level of service delivered by more than 7,000 highly trained, dedicated and ambitious people.

When you work with GET, expect us to deliver everything you need to make sure your project is completed with maximum tranquility.



# GET THE SERVICE YOU NEED

When you work with GET, you have the choice of benefiting from our complete range of services and expertise you need.

Our services span:

- Infrastructure
- Marine works
- Structural & Architectural
- Mechanical, Electrical and Plumbing (MEP) = Fit-out
- Landscaping

Our expertise area:

- Mega projects
- Military facilities
- High end construction

We also offer facility management services for both individual clients and business in general, which covers offices, arenas, schools, shopping centers, hospitals, hotels and any other large facility. Whichever GET service you request, you can always count on your needs being met by our highly qualified, professional people.



## GET HEALTH, SAFETY AND

**Protecting our people and the environment is a key part of what GET does.**

Whatever the size and scope of a project, GET always adheres to the most appropriate and rigorous health and safety standards. Our people are trained to avoid workplace-related injuries and make sure they stay up to date with all the latest safety practices.

When it comes to caring for the environment, GET ensures to use state-of-the-art environmental engineering processes. Our approach guarantee efficient wastewater management and air pollution control, recycling, waste disposal, industrial hygiene, better public health and preservation of nature.



## GET ACCOMPLISHMENTS

Our reputation is built on our ability to complete outstanding projects from start to finish using knowledge and experience.

We apply our tried-and-tested methodology to marine developments, world-class hotels and resorts, significant military and government projects and the finest residences.

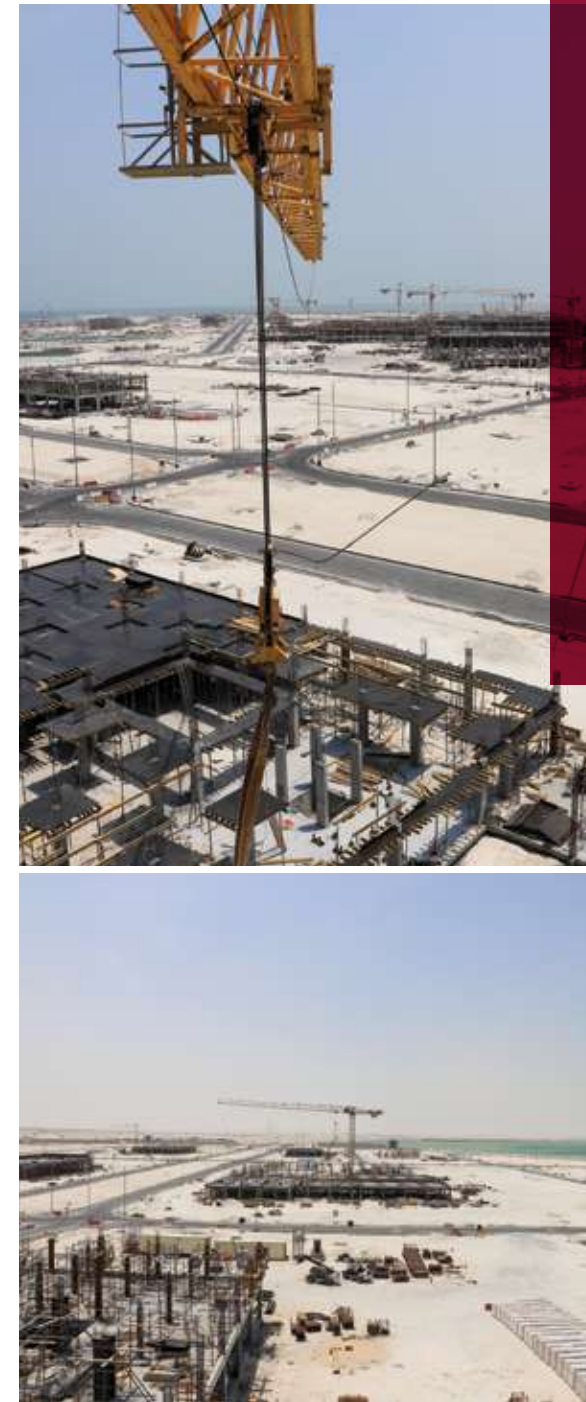
Increasingly, we are delivering projects that are larger and more ambitious than ever before, with excellent results.



## **GET MEGAPROJECTS & MILITARY PROJECTS**

GET developed a special know how to accomplish Megaprojects, which are large-scale, complex ventures that typically cost over 1 billion dollars, involve multiple public and private stakeholders, are transformational, and impact huge number of people.

GET also developed another key expertise in Military construction and infrastructure projects. This know how is expressed in multiple successful large-scale projects for the army, marine, special forces and coast guard.



## NAVAL BASE Qatar

### Type

Construction, Completion & Maintenance

### Area

4 570 000m<sup>2</sup>, 457ha total, 250ha to be developed blocks

### Location

Qatar, Doha, Between the cities of Al-Wakrah and Mesaieed

### Total Built up-Area

350,000m<sup>2</sup>

### No. of Buildings

170 Buildings

### Duration

36 months

### Project Overview

The State of Qatar is developing a new Naval Forces Base. Sited on a reclaimed offshore land, the New Naval Base Project (NNBP) lies on the northern side of the entrance channel to the New Port Project (NPP). This Mega Project, covers an area of approximately 5 km<sup>2</sup> the NNBP and will accommodate various building types to serve the operations of the Qatar Armed Forces.

### Scope of Work

Construction, Completion & Maintenance: The Works cover procurement, design, construction, testing, commissioning, and handover of the above grade works, below grade infrastructure (predominantly located within the respective building blocks), the associated utility buildings, and the various buildings required for a fully operational Naval Base facility.



## TBZ - TARIQ BIN ZIYAD NEW CAMP

Qatar

<b>Type</b> Design & Build	<b>Area</b> 204,000m <sup>2</sup>
<b>Location</b> Qatar, Doha, AL Sailyah	<b>Total Built up-Area</b> 48,000m <sup>2</sup>
<b>Duration</b> 14 months	<b>No. of Buildings</b> 28 Buildings & Utilities

Mega & Military

### Project Overview

A new base for the Qatar Armed Forces in Siliyah, Doha with a total of 28 buildings (headquarter, soldiers barracks for 600 personnel, inventory warehouses, equipment warehouses, workshops for tanks, workshop for vehicles, ammunition stores, armory buildings, a gate, parade area, mess hall, sports hall and so on) and a total built-up area of around 48,000 square meters.

### Scope of Work

Design & Build: The Works cover the design, procurement, construction, testing, commissioning, and handover of the various buildings, infrastructure and external works required for a fully operational Army Base facility. The scope also covers providing all the furniture and equipment.



## CGBL - COAST GUARD BASE LAND

Qatar

<b>Type</b> Construction, Completion & Maintenance:	<b>Area</b> 640 000 m <sup>2</sup> , 64-hectare landside plot limits.
<b>Location</b> Qatar, north of Doha, Sumaysimah	<b>Total Built up-Area</b> 135,915 m <sup>2</sup>
<b>Duration</b> 48 months	<b>No. of Buildings</b> 69 Buildings & Utilities

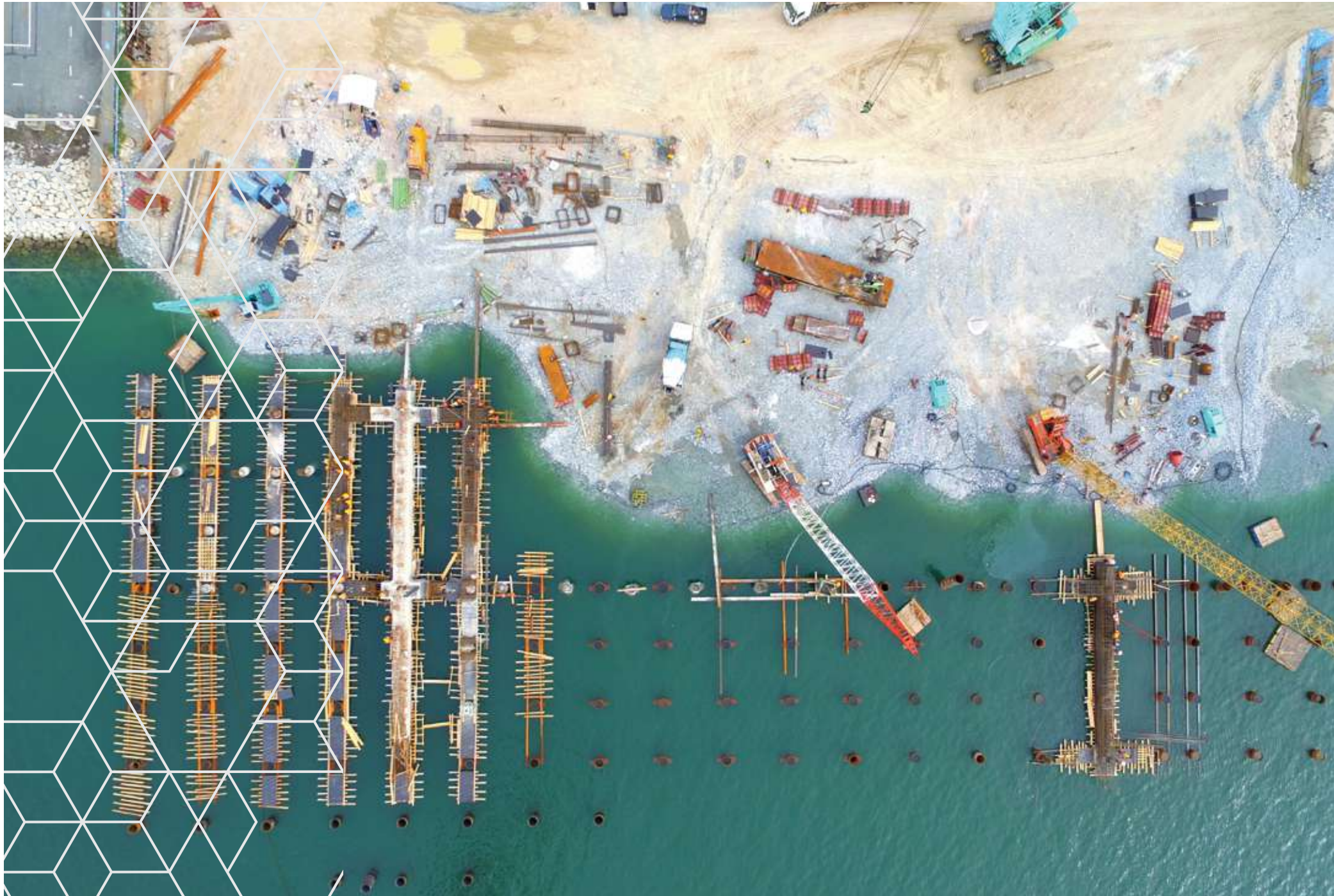
Mega & Military

### Project Overview

The Base Project is a proposed new Coast Guard Base located north of Doha in the State of Qatar. The facility is in use by the Qatari Coast Guard, as their first independent facility in Qatar. The Base Project is sited in a strategic central location on the Eastern Coast which allows for rapid Coastguard deployment to protect the country's eastern seaboard.

### Scope of Work

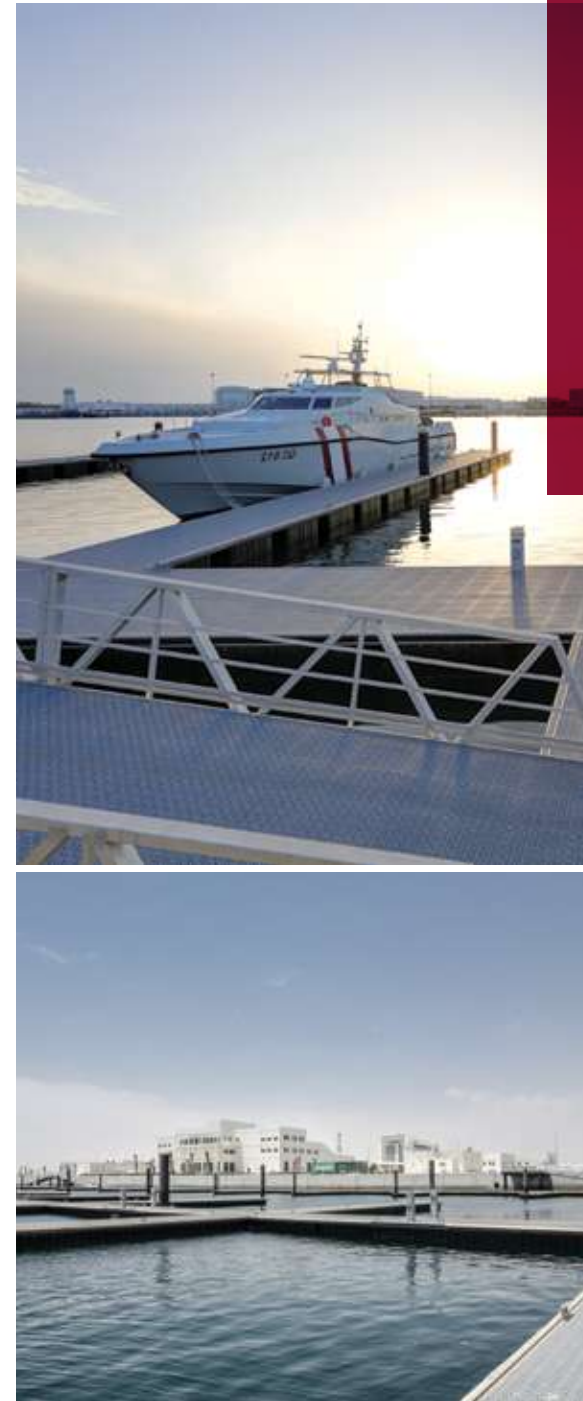
Construction, Completion & Maintenance:  
The landside coast guard base provide multiple facilities including maintenance and operational workshops serving the marina, offices, a mosque, residential accommodation, sports and recreational facilities and training facilities and include state of the art security systems and all infrastructure within the 64 hectare landside plot limits.



## GET MARINE AND INFRASTRUCTURE

Our track record when it comes to bringing even the most challenging marine construction projects is second to none in our region.

GET's remarkable range of experience and expertise spans berthing, pontoons, boardwalks, marina wharves and developing existing seashores to the highest possible standards. We're also highly skilled at managing the delivery of every aspect of infrastructure, including mechanical, electrical and plumbing utilities.



# COAST GUARD BASE MARINE

Qatar

**Type**  
Construction,  
Completion and  
Maintenance

**Duration**  
40 months

**Location**  
Qatar, South of  
Sumaysimah

**Area**  
520 000 m<sup>2</sup> 52  
hectare

Marine & Infrastructure

## Project Overview

The Base Project is destined to the ships (150 small to medium size boats with a length up to 45m) for the surveillance and protection of the coastal area and improve the response time of action by the Coast Guard during emergencies.

The Project Site is exposed to waves emanating from the Arabian Gulf. In particular, Sumaysimah is exposed to waves from the north-eastern quadrant. Therefore adequate tranquility conditions inside the harbor basin were guaranteed to ensure safe berthing of the Coast Guard fleet and security of the berthing structures and landside facilities during storm events.

## Scope of Work

Construction, Completion and Maintenance: Quay Walls & Travel lift Piers, Installation of Quay furniture, Boat launching ramp, Supply of 2 travel lifts 300 ton capacity, The breakwaters & revetments, Pavement, Crown wall along with the Security Fence, The Aids to Navigation, Floating pontoons Structures, The In-Berth Services, Fuel Station (On-land Tanks and In-Berth Dispensing System), The MEP Services at the Breakwaters.



## 9KM SHORE DEEPNESS TRANSFORMATION

Qatar

<b>Type</b> Design & Build	<b>Duration</b> 12 months
<b>Location</b> Qatar, Sumaysimah	<b>Area</b> 9km long

GET was accorded to design and build three beaches – south, middle and - north – to both enhance quality of life for the local community and help develop tourism. The task involved dredging the swimming area measuring 9 kilometers long, 575 meters wide and 1.8 meters deep, importing beach sand, constructing groynes and breakwater to stabilize the sand and constructing seating areas for family leisure. The result is a continuous beach roughly 9 kilometers long and 80 meters wide.



## GET HOTELS AND RESORTS

GET is a key player in the construction and redesign of some of the most stunning hotels and resorts in our region.

Over the years, we've developed a tried-and-tested approach which remains sensitive to an architect's vision while realizing this in the most practical, cost-efficient manner.

This means using only appropriate materials in the best possible way when it comes to everything from construction to interiors and furniture, fittings and installing equipment.

GET always delivers.



## AL MESSILA RESORT & VIP SPA

Qatar

<b>Type</b> Design & Build	<b>Area</b> 132,000 m <sup>2</sup>
<b>Location</b> Qatar, Doha, AL Messila Area	<b>Total Built up-Area</b> 61,000 m <sup>2</sup>
<b>Duration</b> 36 months	<b>No. of Buildings</b> 41 Buildings Including

### Project Overview

The Project is located at al Messila Area in a prime location along the “D” ring Road (Doha Express Way). The aim of the projects is to create an inspiring space for members and guests to focus on health and longevity with enjoyment fun interaction and education. The facility is for a variety of fitness levels and ages as well as chronic conditions that can be reduced and controlled via multiple treatment offerings, fitness regimes and nutrition advice.

### Scope of Work

Design & Build: The Project consists of the following functions and buildings:  
Five (5) Stars Hotel, Fine Dining Restaurants, Huge landscape, Wellness Spa building (8,000m<sup>2</sup>), Fitness center, 30 Luxury Villas, 5 Buildings, Gate houses.





## AL WAKRA HOTELS Qatar

<b>Type</b> Design & Build	<b>Area</b> 30,200 m <sup>2</sup>
<b>Location</b> Qatar, AL Wakra, Al Wakra Heritage village	<b>Total Built up-Area</b> 15,500 m <sup>2</sup>
<b>Duration</b> 31 months	<b>No. of Buildings</b> 2 Main Hotels Buildings & Utilities

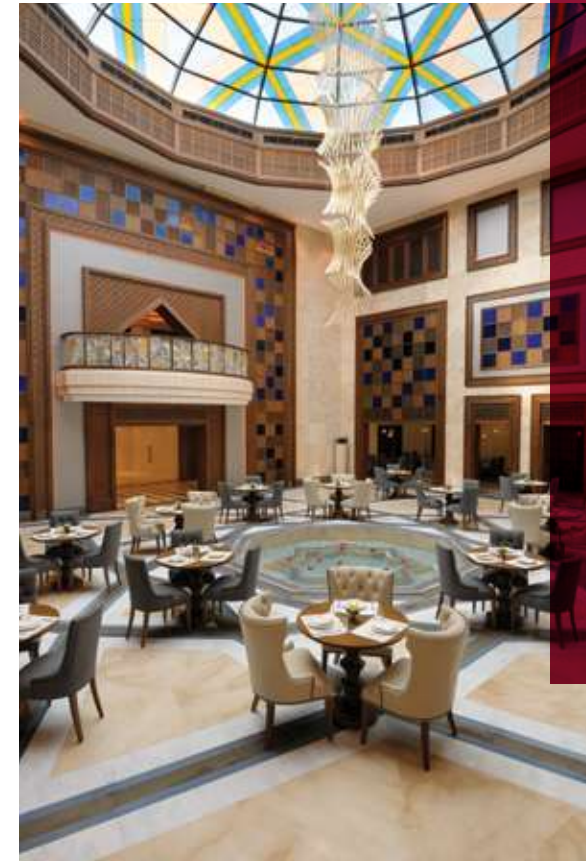
### Project Overview

The aim of the project is to create luxury Hotels based on a renovation process for a part of the heritage houses of Al Wakra village to turn it into five stars hotels and preserve the heritage theme of the buildings. The intent is to use as much as possible from the houses rooms and turn it to Hotel rooms and other functional spaces necessary for operating a five stars Hotels.

### Scope of Work

Design & Build: Project which consists of two five-star heritage hotels (hotel 1&2) with spa and fitness center, handed over as fully operated project with 101 guest rooms & junior suites.





## AL BIDDA HOTEL

Qatar

<b>Type</b>	<b>Duration</b>
Design & Build	24 months
<b>Location</b>	<b>Area</b>
Qatar, Souq Waqif	24,000 m <sup>2</sup>

### Project Overview

GET modified the existing Souq Al Manah buildings in Souq Waqif area to convert it into a spacious 24,000 – square – meter luxury boutique hotel with 32 luxuries suites, now known as the AL Bidda Hotel.

### Scope of Work

Design & Build: AL Bidda Hotel in Souq Waqif to be fully operated/turnkey project with full renovation of the building's façade.





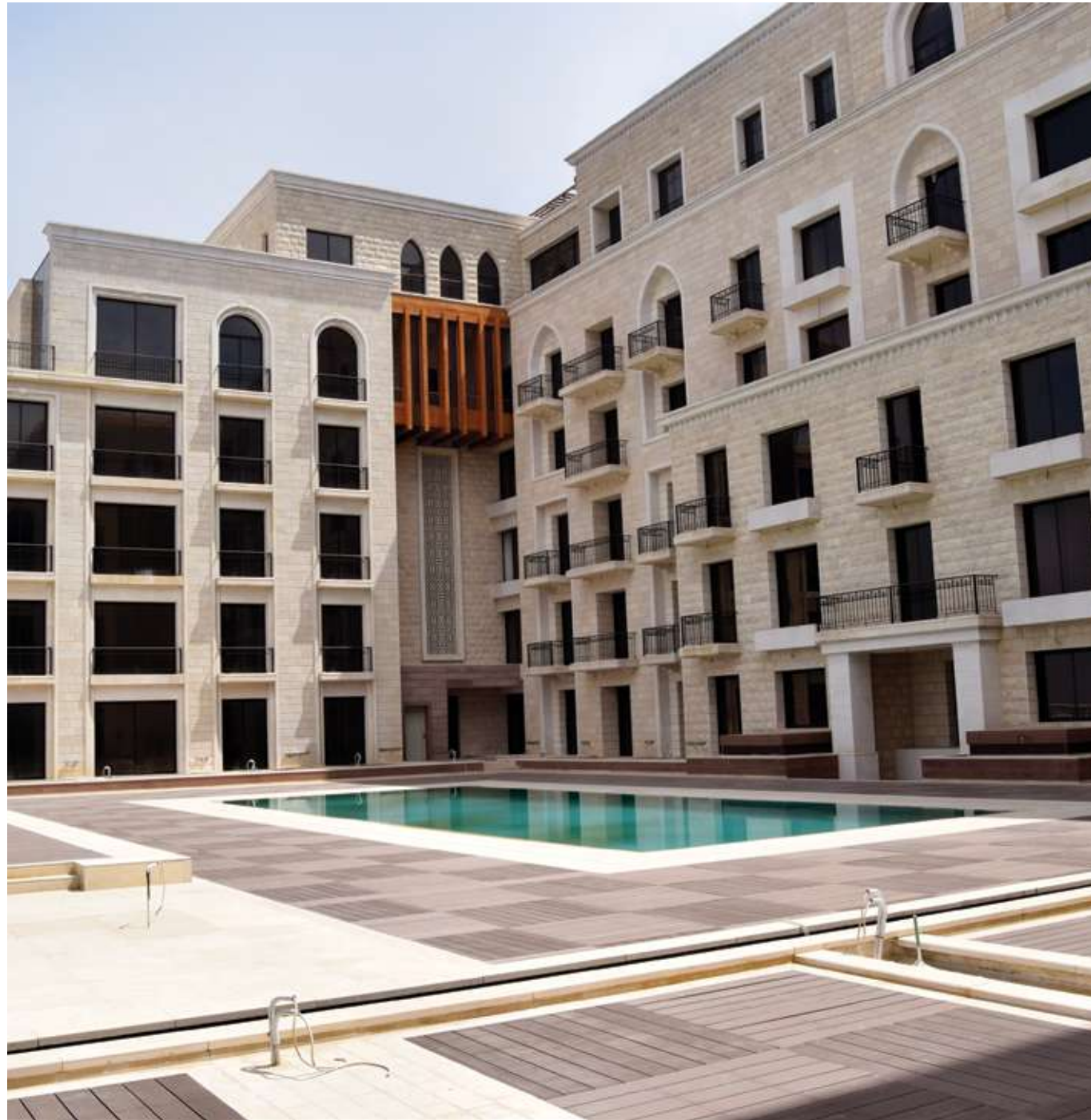
## BISMILLAH HOTEL

Qatar

<b>Type</b>	<b>Duration</b>
Design & Build	12 months
<b>Location</b>	
Qatar, Souq Waqif	

Our involvement with this turnkey conversion covered all the essential design and build work, including two hotel suites with en-suite bathrooms, the ground floor lobby, lounge, elevator, common pantry and staff bedrooms.





## TANIOS HOTEL

Lebanon

<b>Type</b> Design & Build	<b>Duration</b> 36 months
<b>Location</b> Mount Lebanon, Lebanon	<b>Area</b> 5,000 m <sup>2</sup>
	<b>Total Built up-Area</b> 38,600 m <sup>2</sup>

Hotels & Resorts

This ambitious 5 star-hotel project covered a total built-up area of 43,000 square meters spanning three basements and 10 floors.

Tanios Hotel offers 159 guest rooms and facilities include a main dining room, two restaurants, three cinemas, nine shops, a gym with pool and a main ceremonies hall. GET also landscaped the internal green spaces.



## GET LANDSCAPES



## AL BIDDA PARK

Qatar

### Type

Construction,  
Completion &  
Maintenance

### Area

2,050,000m<sup>2</sup> / 205  
Hectares / 506 Acres

### Location

Qatar, Doha, Al Bidda

### No. of Buildings

47 Buildings & Utilities

### Duration

30 months



Landscapes

### Project Overview

The Doha Grand Park master plan has been inspired by the great parks of the world. It has derived its cues from the successful elements that firmly root those great parks as significant and powerful tools in nation-building, sustainable and healthy living, urban sanctuary and ultimately defining a city.

### Scope of Work

Construction, Completion and Maintenance: The project was executed in 3 phases to cover the whole park area. The largest part of Phase 1 is the central portion of the Park. The landscaping over the underground car parks is also part of the project. The three phases include but not limited to: buildings, utilities, signage, bridge, tunnels, MEP, furniture, lighting, soft and hard landscape.



## **GET HIGH END RESIDENTIAL & PALACES**

Our clients demand only the very best from the people they work with and this is a challenge to which we are more than happy to rise to in support of their vision.

Since GET began, we have been integral to the construction of some of the finest high-end villas, residential palaces and castles for a number of prestigious individuals and families.

We are honored that clients such as these value GET so highly that they consistently recommend us.



## AL MAJIDA PALACE

Qatar

<b>Type</b> Design & Build	<b>Area</b> 40,000 m <sup>2</sup>
<b>Location</b> Al Ghowairiya, Qatar	<b>Total Built up-Area</b> 6,000 m <sup>2</sup>
<b>Duration</b> 24 months	

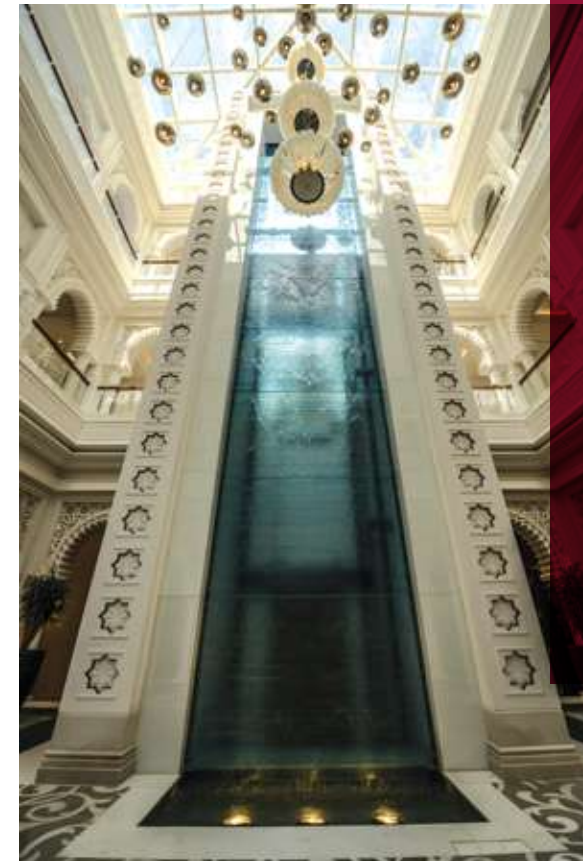
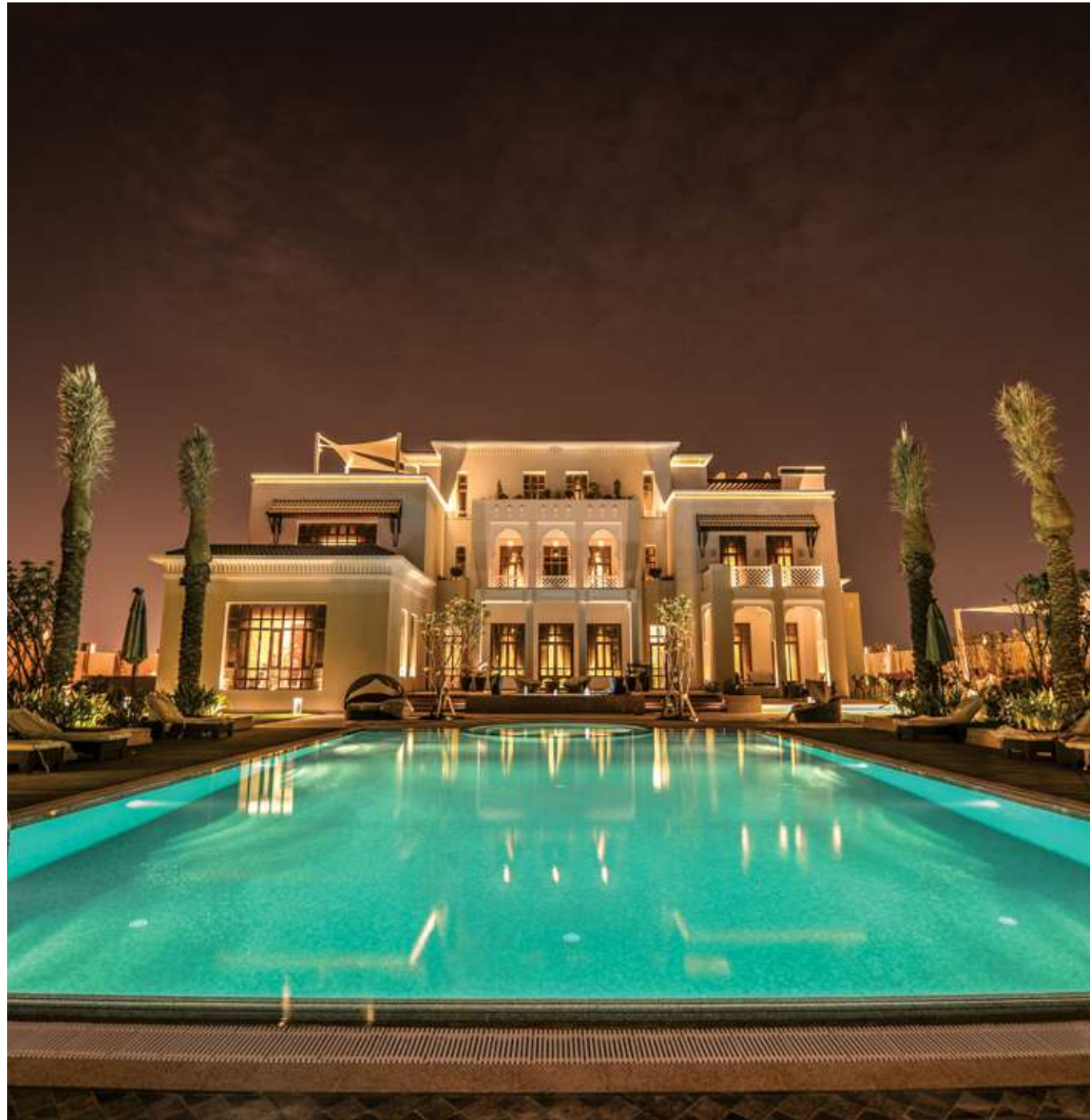
### Project Overview

This visionary project totaled over 600,000 square meters and we were responsible for around 40,000 square meters of renovation on a turnkey basis and harmonious landscaping including forests and spice plants.

### Scope of Work

The main buildings consist of a villa, private Majlis for the Sheikh, public Majlis, spa and swimming pool and staff, services and drivers' buildings. We were also tasked with constructing external roads, soft and hard scape and infrastructure works.





## AL MESSILA VILLAS

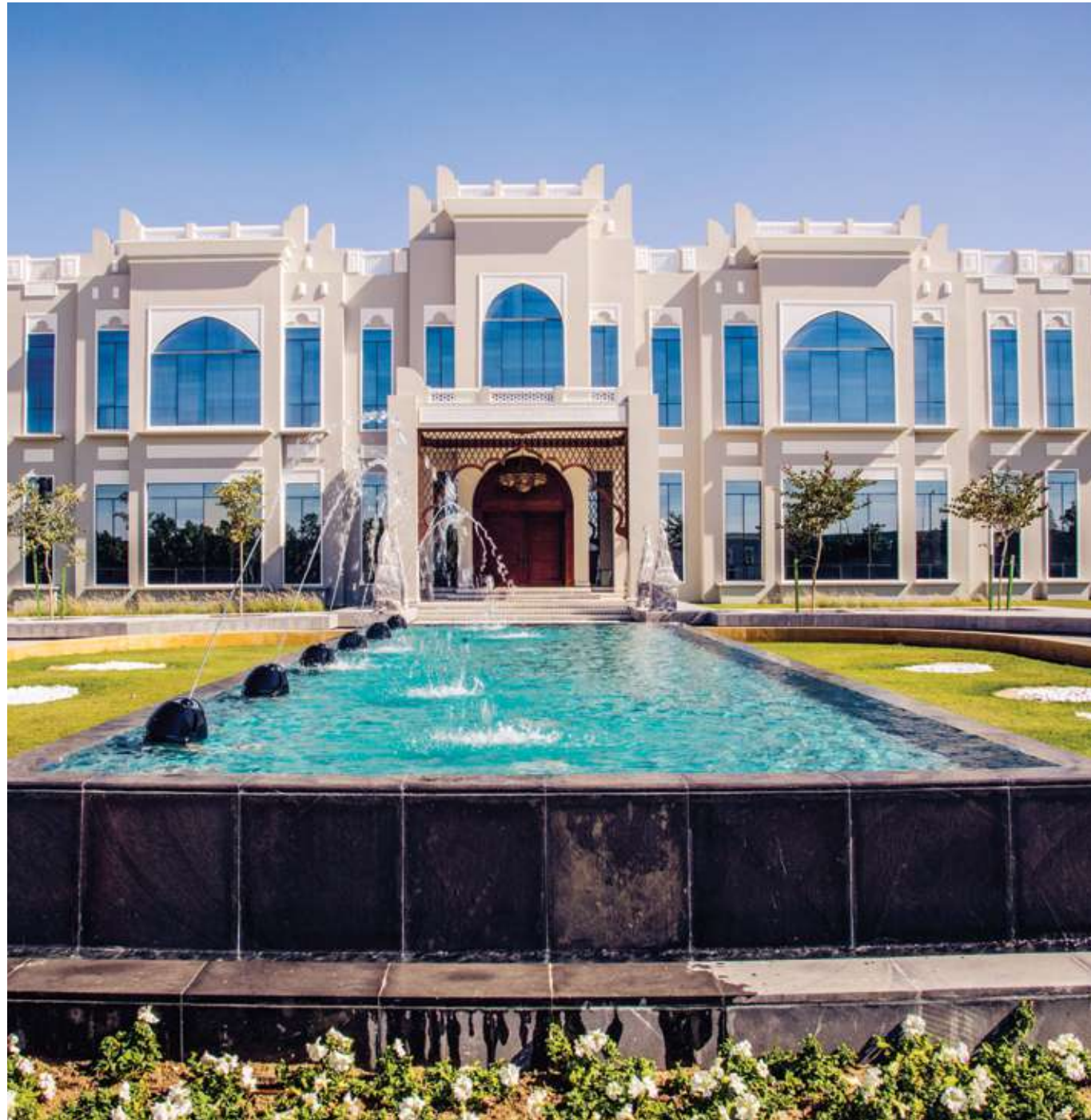
Qatar

<b>Type</b> Design & Build	<b>Area</b> 24,000 m <sup>2</sup>
<b>Location</b> Qatar	<b>Total Built up-Area</b> 6,500 m <sup>2</sup>
<b>Duration</b> 38 months	<b>No. of Buildings</b> 4 Villas

Part of a development of six villas at Al Messila with a total area of around 35,880 square meters, four villas have been designed and built by GET on a turnkey basis. The total area of each plot is approximately 6,000 square meters and the built-up area for each villa is approximately 5,000 square meters.

Alongside the villas themselves, our work included landscaping and constructing a boundary wall, external guard house and four separate substations and generators.





## SHEIKH FAHAD PALACE

Qatar

<b>Type</b> Design & Build	<b>Area</b> 125,000 m <sup>2</sup>
<b>Location</b> Bany Hajar – Qatar	<b>Total Built up-Area</b> 7,738 m <sup>2</sup>
<b>Duration</b> 24 months	

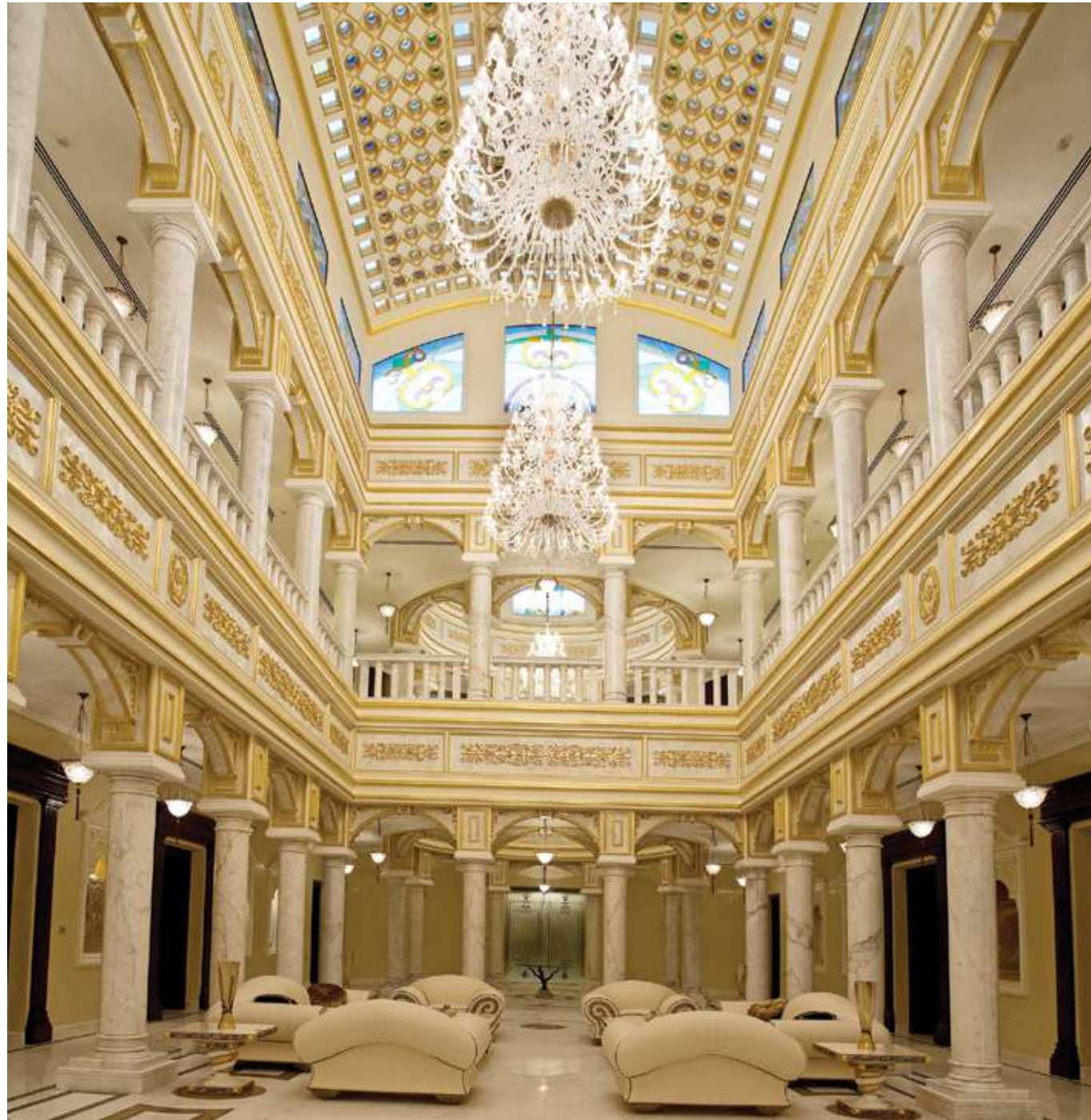
### Project Overview

This is one of our most prestigious projects for royalty, with every element completed to the highest possible standards. The main villa covers 4,000 square meters, the majlis 2,838 square meters, and the fully equipped clubhouse 900 square meters. The clubhouse incorporates a state-of-the-art home theatre and a world-class bowling alley.

### Scope of Work

Design and build project, architectural, MEP, Civil works, interior design, FF&E and all external and landscape works included but not limited to a huge area of gardens have been landscaped to a level of breathtaking beauty.





## SHEIKH ALI BIN ABDULLAH PALACE

Qatar

**Type**

Rehabilitation &  
Decoration

**Area**

24,000 m<sup>2</sup>

**Total Built up-Area**

8,000 m<sup>2</sup>

**Location**

Rumallah area –  
Doha – Qatar



**Project Overview**

This spectacular luxury Palace is well known as the Guest Palace for the State of Qatar.

**Scope of Work**

For the rehabilitation of this spectacular palace and complex, we provided all services including architectural, interior design, external works, electro-mechanical works, FF & E, furnishings and installations.



## AL GHARIYA PALACE

Qatar

<b>Type</b> Design & Build	<b>Area</b> 25,000 m <sup>2</sup>
<b>Location</b> Qatar	<b>Total Built up-Area</b> 6,000 m <sup>2</sup>
<b>Duration</b> 18 months	<b>No. of Buildings</b> 2 Villas

This project is located at North Road in the Ghariya area on a plot of 22,000 square meters. It is composed of a main villa, guest villa, external majlis, external kitchen, guard rooms and all related services.

The main villa comprises a ground floor, first floor with swimming pool and a terrace. There is a fabulous 150-meter-long sea view and around 15,000 square meters of landscaping and greenery.





## ABDUL AZIZ BIN AHMAD PALACE

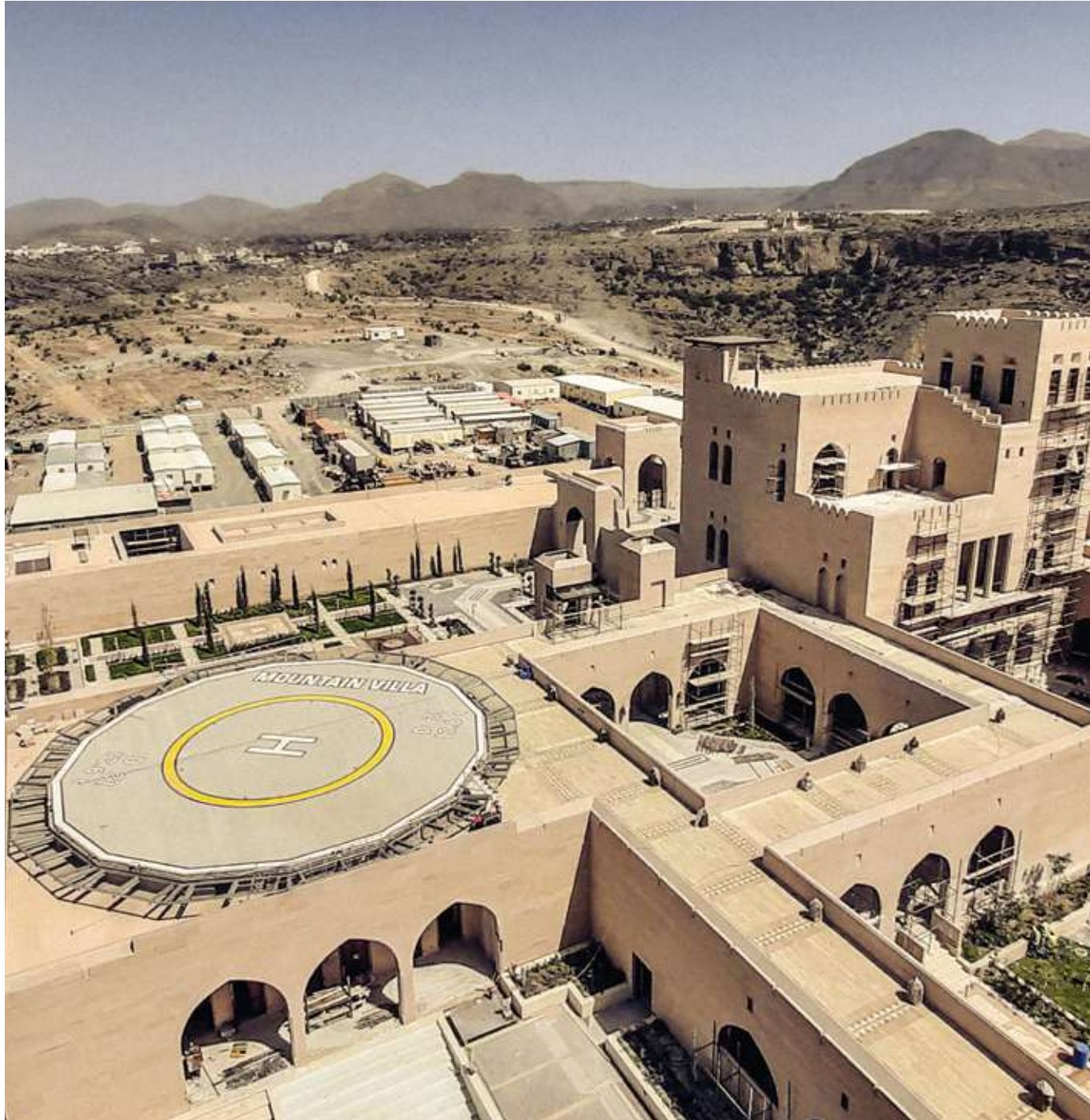
Qatar

**Type**  
Design & build

**Location**  
Rayyan

GET delivered two luxury villas in the Rayyan area. The total plot area was 42,000 square meters with 9,000 square meters of services – a fully equipped industrial kitchen, staff accommodation, guard rooms, offices and stores. We also handled soft and hard landscaping of the external areas and built access roads.





## PALACE AT JABAL AL-AKHDAR

Oman

<b>Type</b> Design & Build	<b>Area</b> 24,000 m <sup>2</sup>
<b>Location</b> Sultanate of Oman, Jabal Al-Akhdar	<b>Total Built up-Area</b> 24,000 m <sup>2</sup>
<b>Duration</b> 36 months	<b>No. of Buildings</b> 3 Main Buildings

### Project Overview

Private Palace at Jabal Al-Akhdar in Sultanate of Oman, is designed and implemented following the Omani style architecture and interior design, in order to meet the standards of luxury palaces which are in line with the VVIP end-user requirements and ambitions.

### Scope of Work

Our mission is to design and build a very luxurious residence at Jabal Al-Akhdar in Sultanate of Oman. It includes external works and all related luxury buildings (including connection to the utility services, up to the plot limit) and make the facility fully operational as turnkey project.





## BHERSAF PALACE

Lebanon

<b>Type</b>	<b>Duration</b>
Design & Build	48 months
<b>Location</b>	<b>Area</b>
Mount Lebanon, Lebanon	35,000 m <sup>2</sup>
	<b>Total Built up-Area</b>
	19,000 m <sup>2</sup>

The project consists of the construction of a V.I.P. Palace in Bhersaf area, in the North Metn Casa, Mount Lebanon. The total built-up area of the Palace is around 19,000 square meters consisting of a Basement Floor, Ground Floor and 2 Upper Floors.

The palace includes a VVIP suite with private toilet, steam room, bedroom, dressing suite and beauty salon, 7 Nrs. VVIP suites that include 3 master bedrooms, lounge, dining room, kitchen and storage room, 4 VVIP suites for guests that include 2 master bedrooms, lounge, dining room, kitchen, 4 VIP suites for personal assistants, main majlis, main dining, Lebanese majlis, VVIP office and TV room, private club, swimming pool with jacuzzi, industrial kitchen with 7 Nrs. maid room, driver apartment, a guard apartment, technical areas, terraces and access roads and parkings.



## SOUK EL GHARB PALACE

Lebanon

<b>Type</b>	<b>Duration</b>
Design & Build	18 months
<b>Location</b>	<b>Area</b>
Souk El Gharb Aley - Lebanon	9,000 m <sup>2</sup>
	<b>Total Built up-Area</b>
	7796 m <sup>2</sup>

### Project Overview

The project is located in South Mount Lebanon in the unique village of Souk El Gharb. The project covers the top of the mountain in a property of about 9000 square meters. Project consists of Main Villa & Guest House in addition to Boundary Fences.

### Scope of Work

Design and build a main palace consist of 4 levels, guest house, guard house and soft & hard landscape with all related utilities.



## RAYYAN PALACE

Lebanon

<b>Type</b> Restoration	<b>Duration</b> 24 months
<b>Location</b> Mount Lebanon, Lebanon	<b>Area</b> 25,000 m <sup>2</sup>
	<b>Total Built up-Area</b> 3,000 m <sup>2</sup>

Rayyan Palace covers approximately 3,000 square meters of built-up area, split equally into three stories. The spacious ground floor is designed to receive guests on formal occasions. The middle floor is a family reception with living space and two guest rooms. On the upper floor is a private zone for 'Her & His Highness' bedrooms and other services, annexes and assistants' rooms. There are also two private bedrooms for close family members and special guests.

Its original stone façade creates an appearance that links the old with the new. Modern materials have been carefully integrated in the restoration process, along with a wide choice of themes and a white color palette. Indoor spaces have been designed so that each room boasts a multifaceted personality.





## GET PUBLIC PROJECTS

Increasingly, we are trusted to take on turnkey projects on an extremely large scale for government and other organizations in the regions in which we operate.

Our experience includes stadiums, schools, hospitals, parks and car parks, all completed on time, within budget and with no surprises.

With a methodology that considers both the big picture and close attention to detail, GET provides real value.



## HOSPITAL Lebanon

<b>Type</b> Design & Build	<b>Duration</b> 30 months
<b>Location</b> Mount Lebanon, Lebanon	<b>Area</b> 10,000 m <sup>2</sup>
	<b>Total Built up-Area</b> 17,200 m <sup>2</sup>

The hospital incorporates a one-day clinic, external clinics and patient rooms, laboratories and operation rooms. The radio/TV station construction consists of a basement, three floors, building entrances and internal roads. The total built-up area is 17,200 square meters.





## GHOSTA MONASTERY

Lebanon

<b>Type</b>	<b>Duration</b>
Design & Build	30 months
<b>Location</b>	<b>Area</b>
Mount Lebanon, Lebanon	60,000 m <sup>2</sup>
	<b>Total Built up-Area</b>
	14,500 m <sup>2</sup>

Our work consists of extending the existing church at Ghosta into a monastery included constructing a basement and ground floor and three additional floors of bedrooms. We also built social halls, a library, offices, dining room, store and multifunctional hall. The total built-up area is 14,500 square meters.





## ANSAR STADIUM

Lebanon

<b>Type</b> Design & Build	<b>Duration</b> 36 months
<b>Location</b> South Lebanon, Lebanon	<b>Area</b> 22,000 m <sup>2</sup>
	<b>Total Built up-Area</b> 17,380 m <sup>2</sup>

Ansar Stadium Paralympic complex is within the Olympic City of the South at Ansar and consists of 22,000 square meters of built-up area.

We constructed an Olympic-standard swimming stadium, basketball court and social club and now handle the ongoing maintenance of works for the Olympic City of the South.





## GET RESOURCES

We offer everything our clients need for the project at hand – no matter how challenging it may be.

Our logistics experts are skilled at making sure projects are completed smoothly and efficiently, offering the best possible value for money. We pride ourselves on our modern, continuously upgraded equipment which offers everything even the most demanding project might require.

With a workforce of around 7,000 dedicated people with all the necessary skillsets and trained to the highest possible standards, GET has the right resource for every project.

# GET EQUIPMENT

GET Equipment is a high quality and productive equipment with well experienced operators using the best maintained equipment to achieve the highest level of performance in our Projects.

TYPE OF EQUIPMENTS	QUANTITY
HEAVY EQUIPMENTS	124
CONSTRUCTION TRANSPORTATION VEHICLES	44
HEAVY MATERIAL PRODUCTION EQUIPMENTS	4
UTILITY EQUIPMENTS	193
TRANSPORTATION VEHICLES	249

# GET PLANT MACHINERY VECHICLES

## HEAVY EQUIPMENTS

TYPE OF EQUIPMENTS	QUANTITY
SKID LOADER	36
TELEHANDLER	16
EXCAVATOR	13
GRADER	2
BACKHOE LOADER	14
LOADER	10
MAN LIFT	2
MINI EXCAVATOR	4
SMALL ROLLER	8
BIG ROLLER	4
TACTOR	3
TOWER CRANE	12

## CONSTRUCTION TRANSPORTATION VECHICLES

TYPE OF EQUIPMENTS	QUANTITY
SIX WHEEL TRUCK	7
TRAILER TRUCK	24
WATER TANKER	7
SEWAGE TANKER	2
LOWBED	1
FLAT BED TRAILER	1
LOWBED TRAILER	2



# GET PLANT MACHINERY VEHICLES

## MATERIAL PRODUCTION EQUIPMENTS

TYPE OF EQUIPMENTS	QUANTITY
CRUSHER	1
SCREENER	1
MANUAL SCREENER	1
BUCKET CRUSHER	2

## UTILITY EQUIPMENTS

TYPE OF EQUIPMENTS	QUANTITY
TOWER LIGHT	79
GENERATOR	105
AIR COMPRESSOR	9



# GET PLANT MACHINERY VEHICLES

## TRANSPORTATION VEHCILES

TYPE OF EQUIPMENTS	QUANTITY
PICK UP (1 TON)	129
PICK UP (3 TON)	20
TATA BUS	50
SMALL CAR	40
SMALL BUS	9
AMBULANCE	1

## GET GROWING

GET is one of the most successful, rapidly expanding construction organizations in our region. Our aim is to continue to grow by taking on challenging critical projects.

Our success is built on fostering strong, long-term relationships with clients and suppliers. These relationships are based on trust, respect and transparent, ethical working practices. Our clients' faith in us inspires us to complete projects on time, and on budget. To achieve our goals, we will continue to innovate, embracing leading-edge technology and constantly monitoring and enhancing the way we work.

## GET IN TOUCH

If you have a project of any kind you would like to discuss with us or you need additional information on what GET Offers, please get in touch with us.

We would be delighted to hear from you.

### **Qatar HQ**

C.R. 41013 | Al Dafna Area, Zone 63, Street 905, Building 08, The Gate Mall, Tower 04, 6th floor - Doha, Qatar  
T. +974 4434 1730 F. +974 4434 1731  
P.O.Box 31898 Doha, Qatar

### **Oman**

Muscat Grand Mall, Al-Khuwair, Office 304B, Muscat  
Oman  
T. +968 24228126 F. +968 24228124 P.O.Box 25 P.C: 105

### **Lebanon**

Amal Building, 1st floor, Sioufi, Ashrafieh, Beirut, Lebanon  
T. +961 1 203094 F. +961 1 203136  
P.O.Box 166047 Ashrafieh, Beirut, Lebanon

