

Greenbelt Reparations Commission Project

Final Presentation



**Brandon Fung, Larissa Musaga,
Isabella Macdonald, Parker Leipzig, and Ilyas Nur**

TEAM ROLES

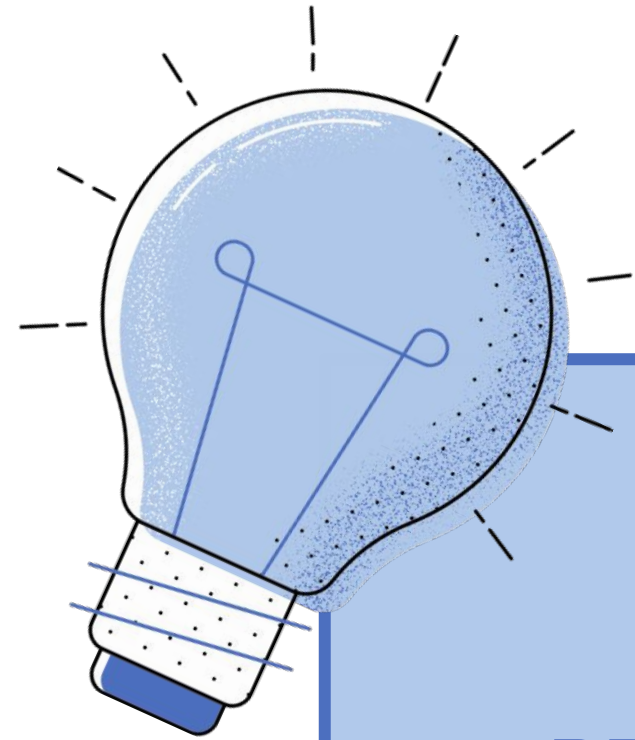
Brandon Fung - Team Lead

Larissa Musaga - Project Manager

Isabella Macdonald - Lead Data Analyst

Ilyas Nur - Assistant Data Analyst & Team Meeting Coordinator

Parker Leipzig - Lead Data Visualization Engineer



AGENDA

01

PROJECT OVERVIEW

02

PROJECT ACHIEVEMENTS

03

TABLEAU DASHBOARD

04

**STATUS,
CONCLUSION & NEXT STEPS**



01 PROJECT OVERVIEW

PROJECT OVERVIEW



- **We were tasked with:**
 - **Finding quality data about the demographics of Greenbelt residents through evaluating different sources for analysis.**
 - **Analyzing demographic data for the Greenbelt Reparations Committee to gain deeper insights into the persistent racial inequalities experienced by African Americans and Native Americans in Greenbelt.**
 - **Demonstrate any findings & inequities using different data analysis techniques on Tableau**

02

PROJECT

ACHIEVEMENTS



PROJECT ACHIEVEMENTS



Identified Data Sources

Focused on American Community Survey



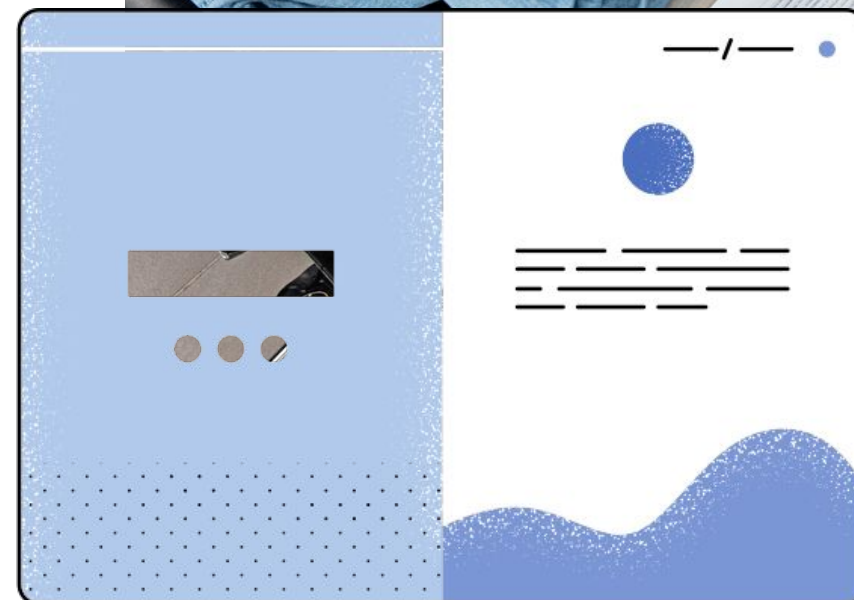
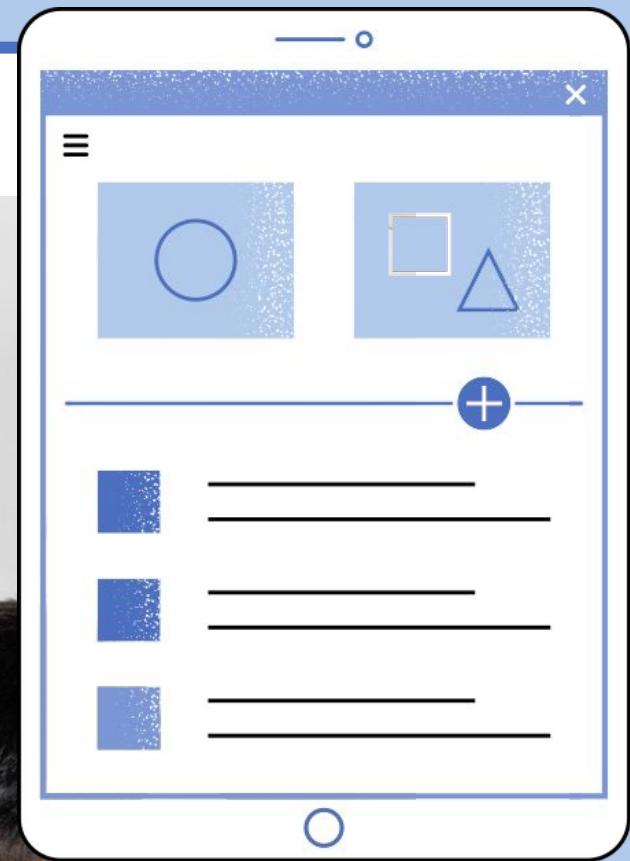
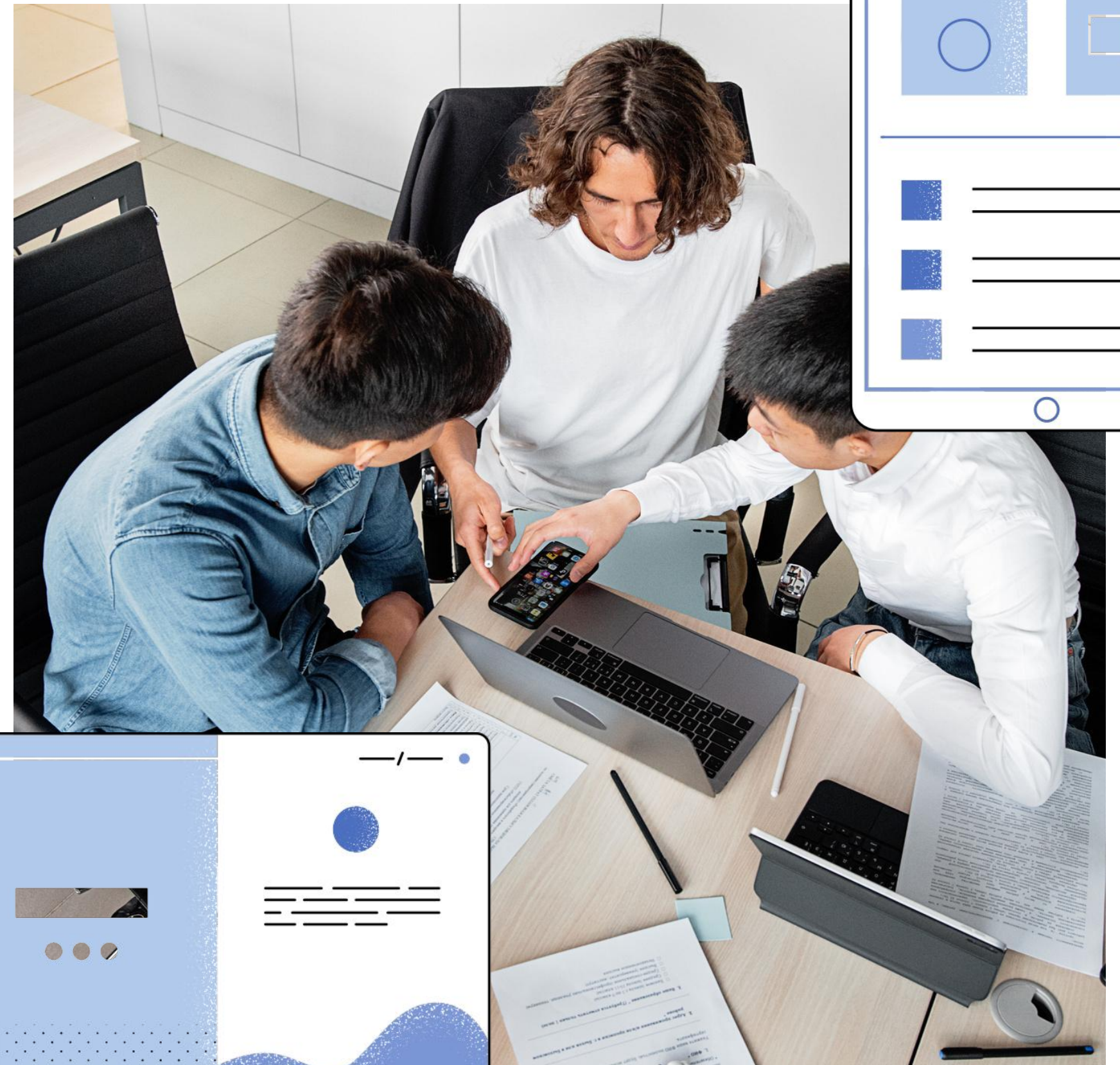
Constructed Tableau Dashboard

Analyzed and presented the data visually



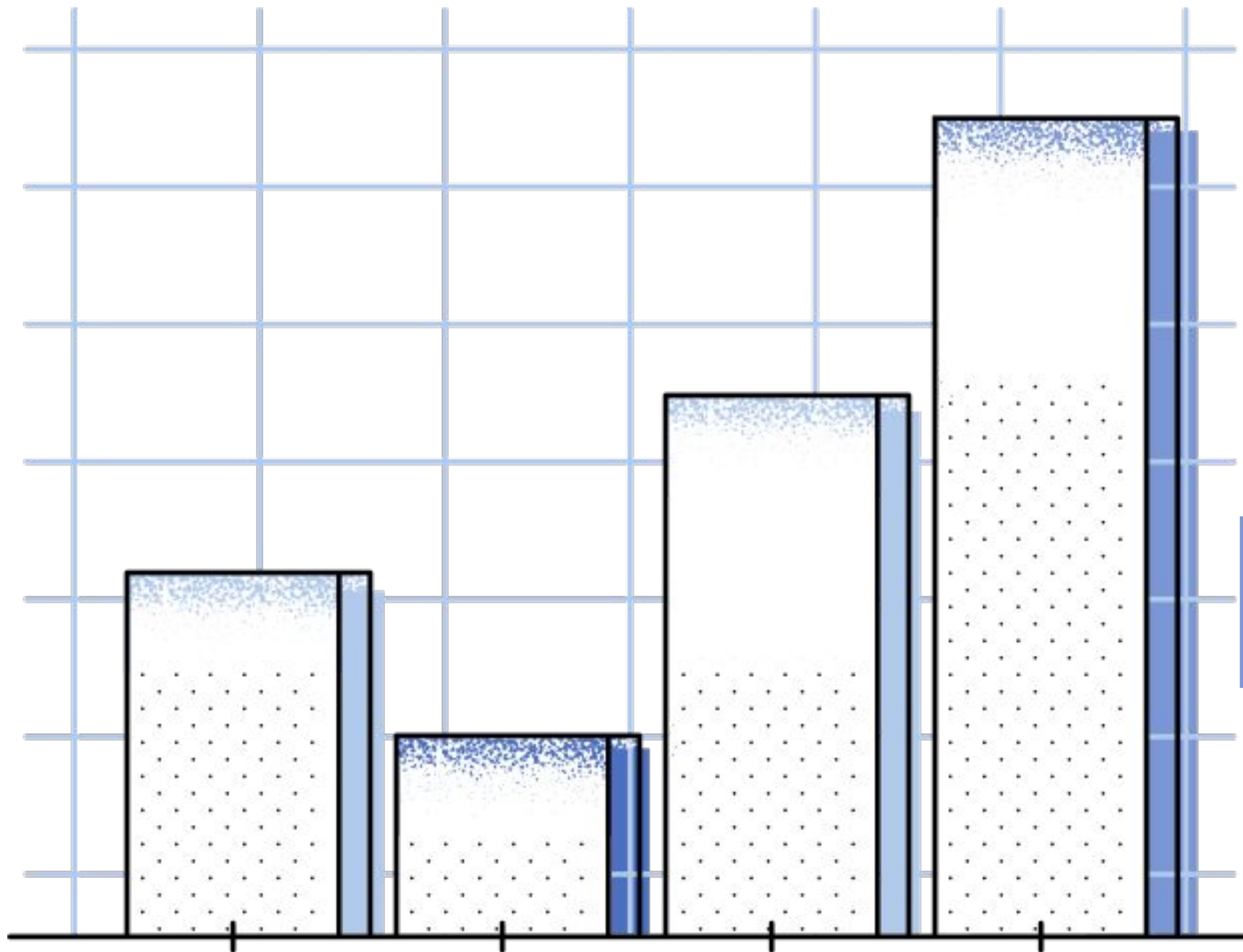
Wrote Analysis Report

Compiled document of research and analysis

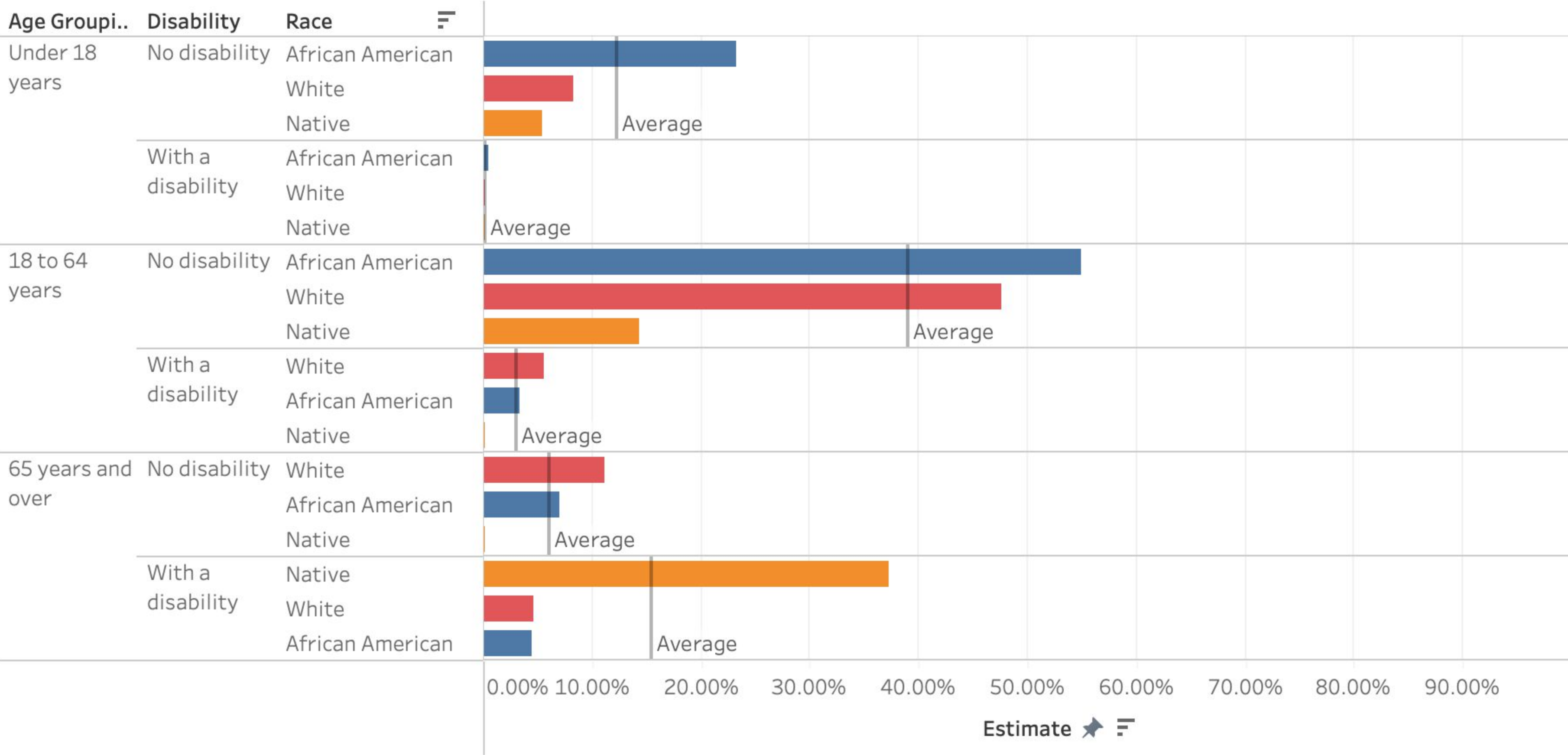


03

TABLEAU DASHBOARD PREVIEW

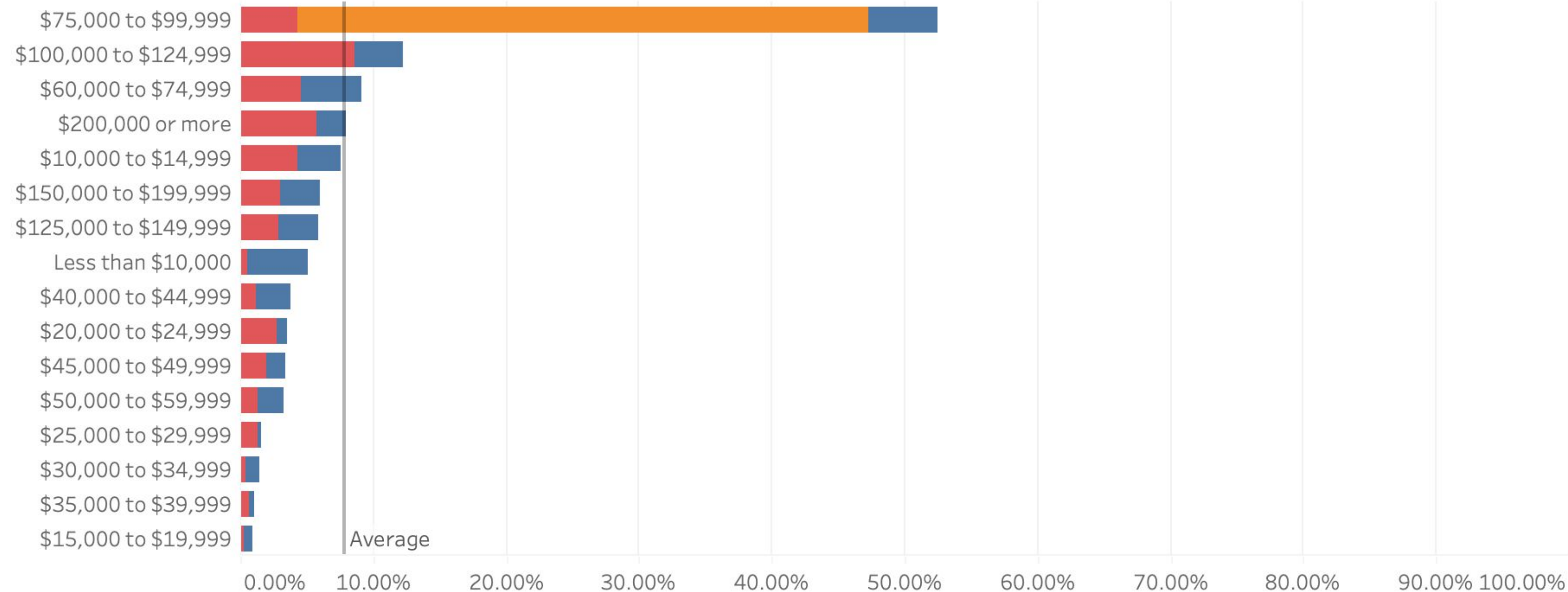


Disability



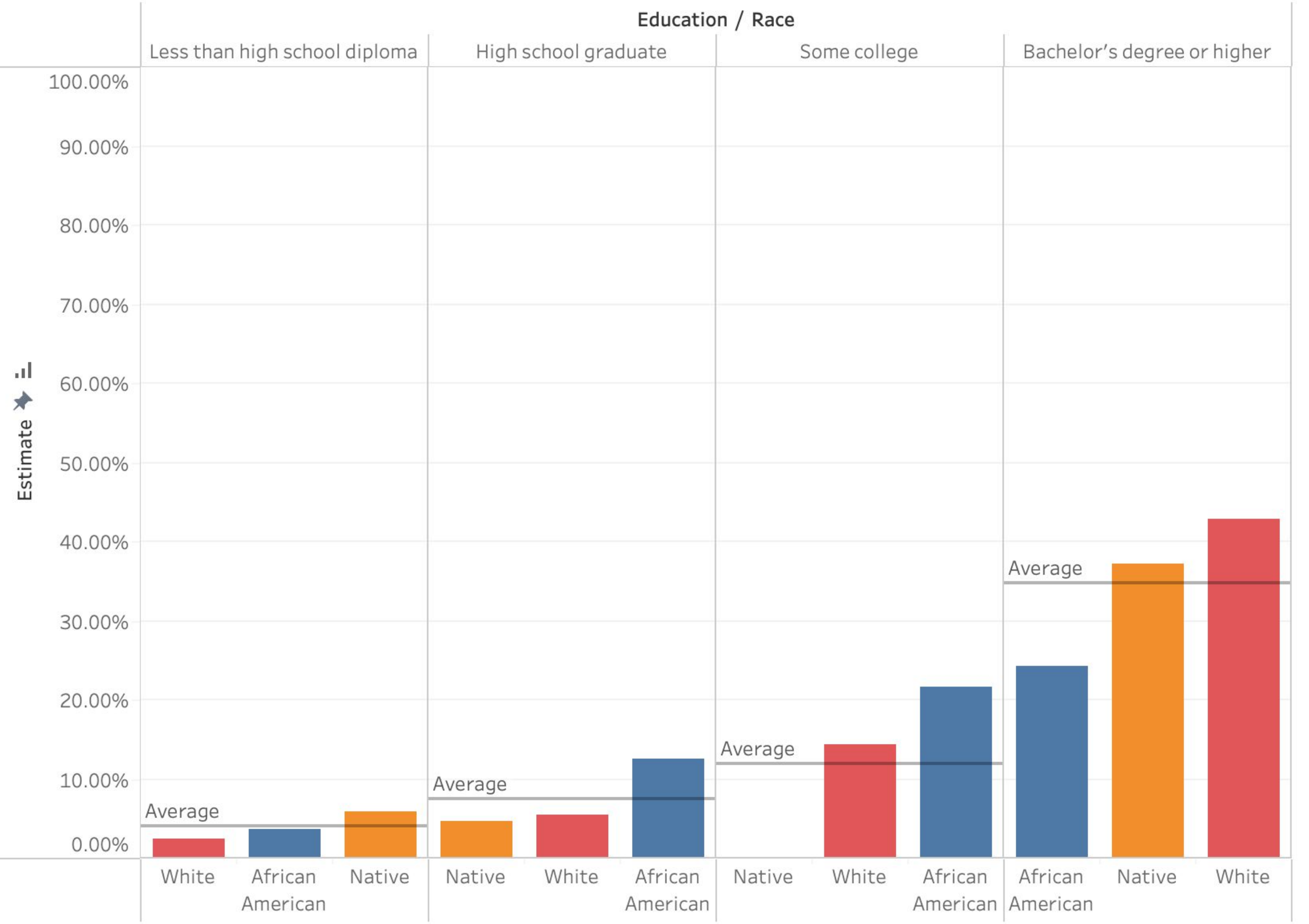
Household Income

Household Income..

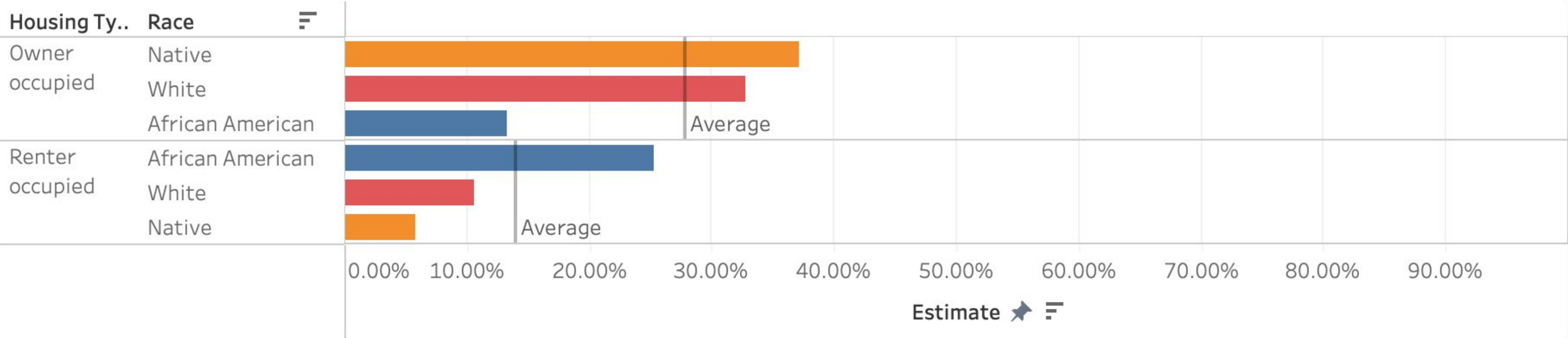


Estimate

Education



Housing



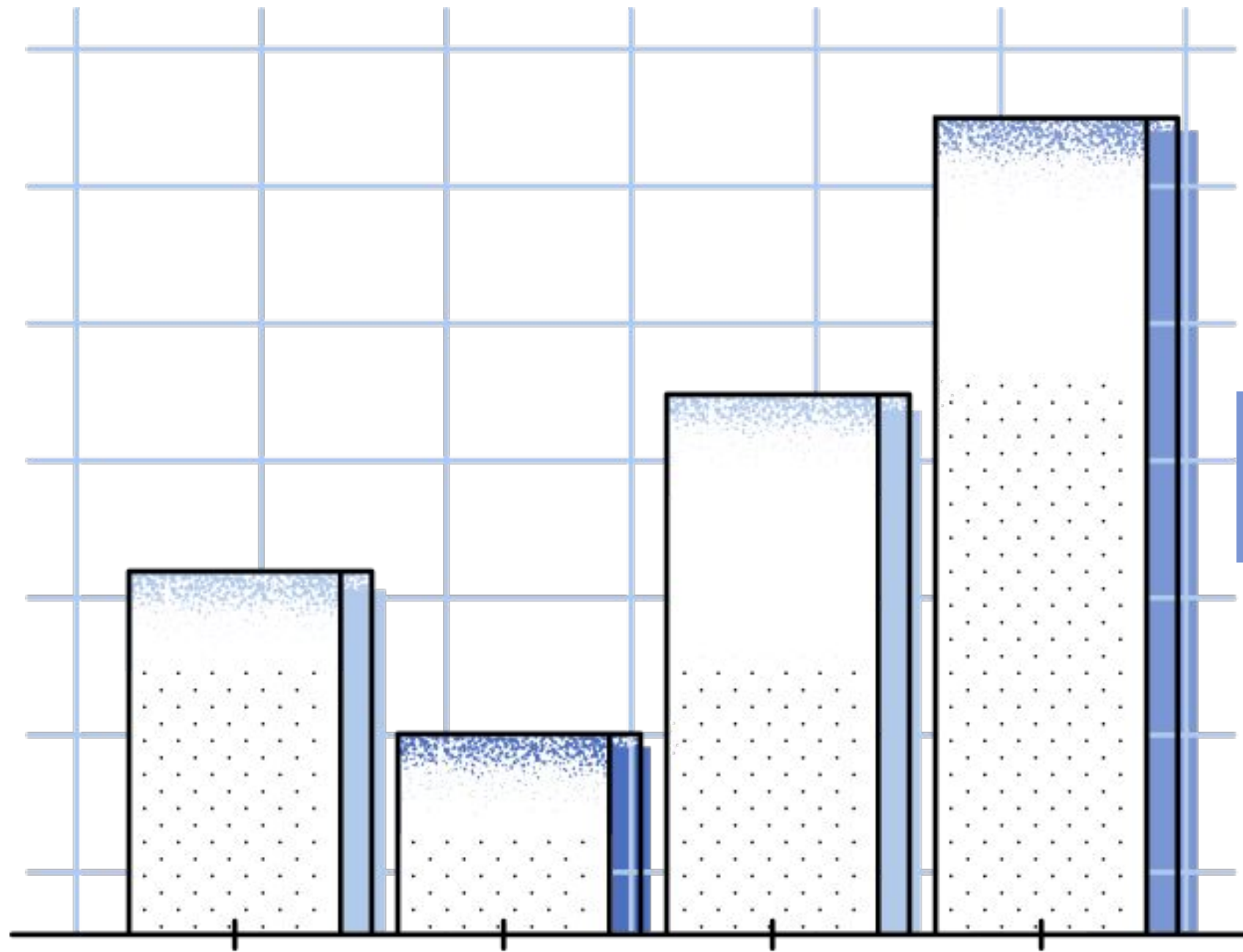


TABLEAU DASHBOARD DEMO

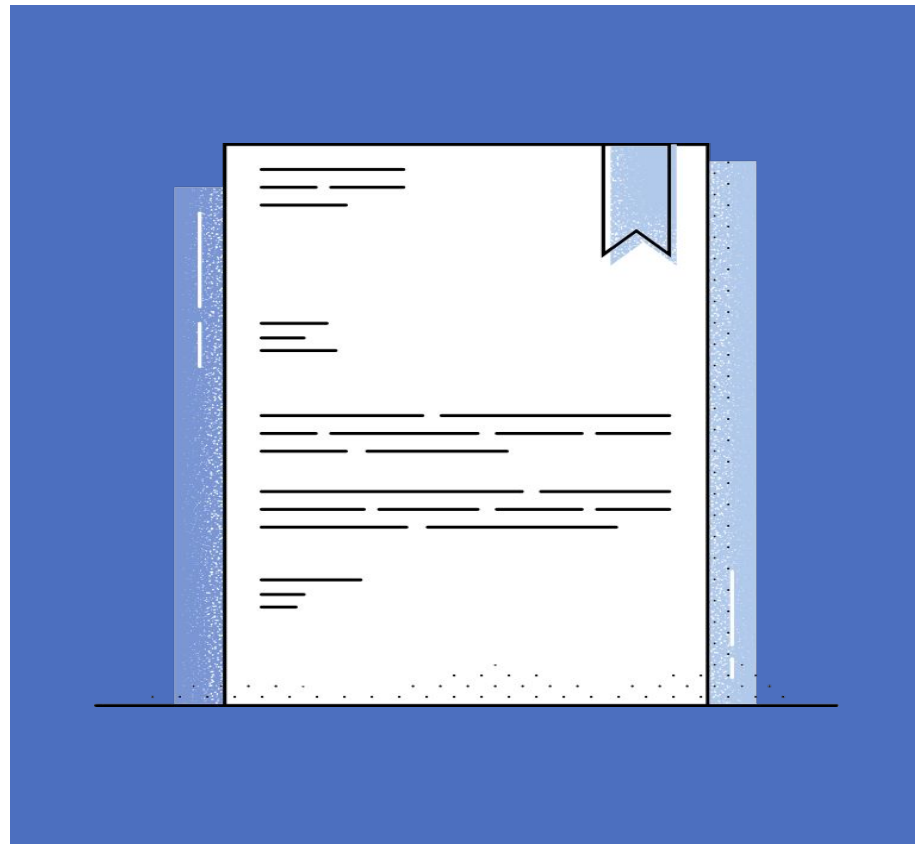
TABLEAU DASHBOARD

https://public.tableau.com/views/GreenbeltReparationsCommissionDataDashboard/Dashboard1?:language=en-US&publish=yes&:sid=&:display_count=n&:origin=viz_share_link



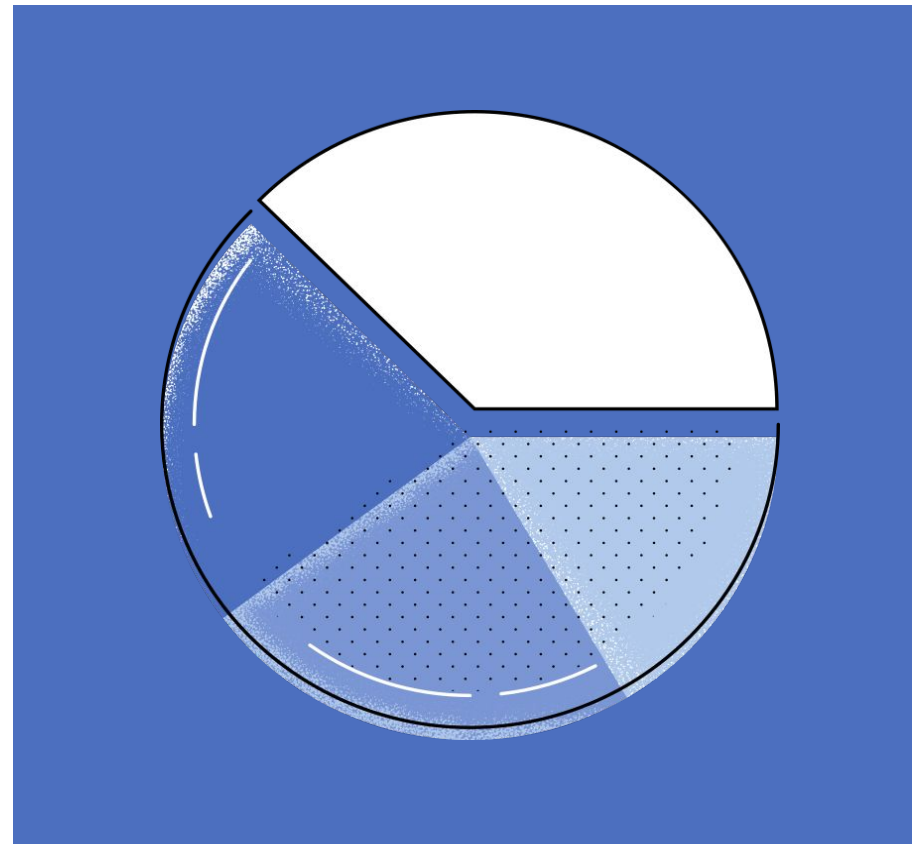
04 STATUS, CONCLUSION & NEXT STEPS

PROJECT STATUS



Final Report

Finalize our report



Tableau

Finishing touches on
dashboard

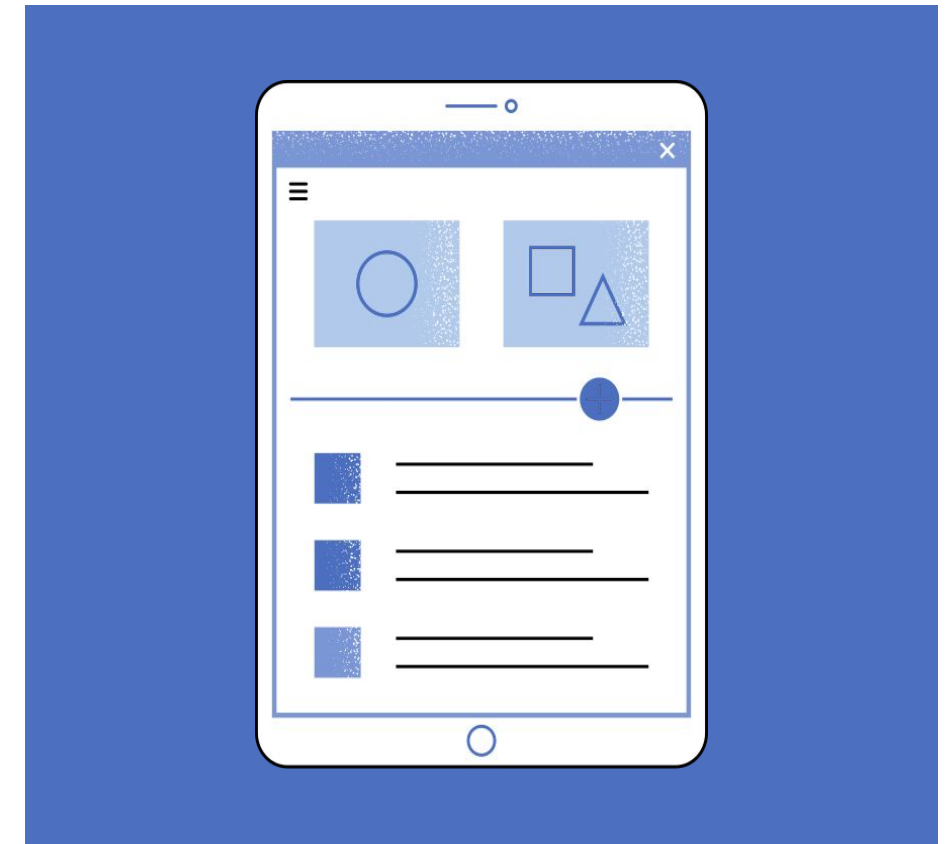
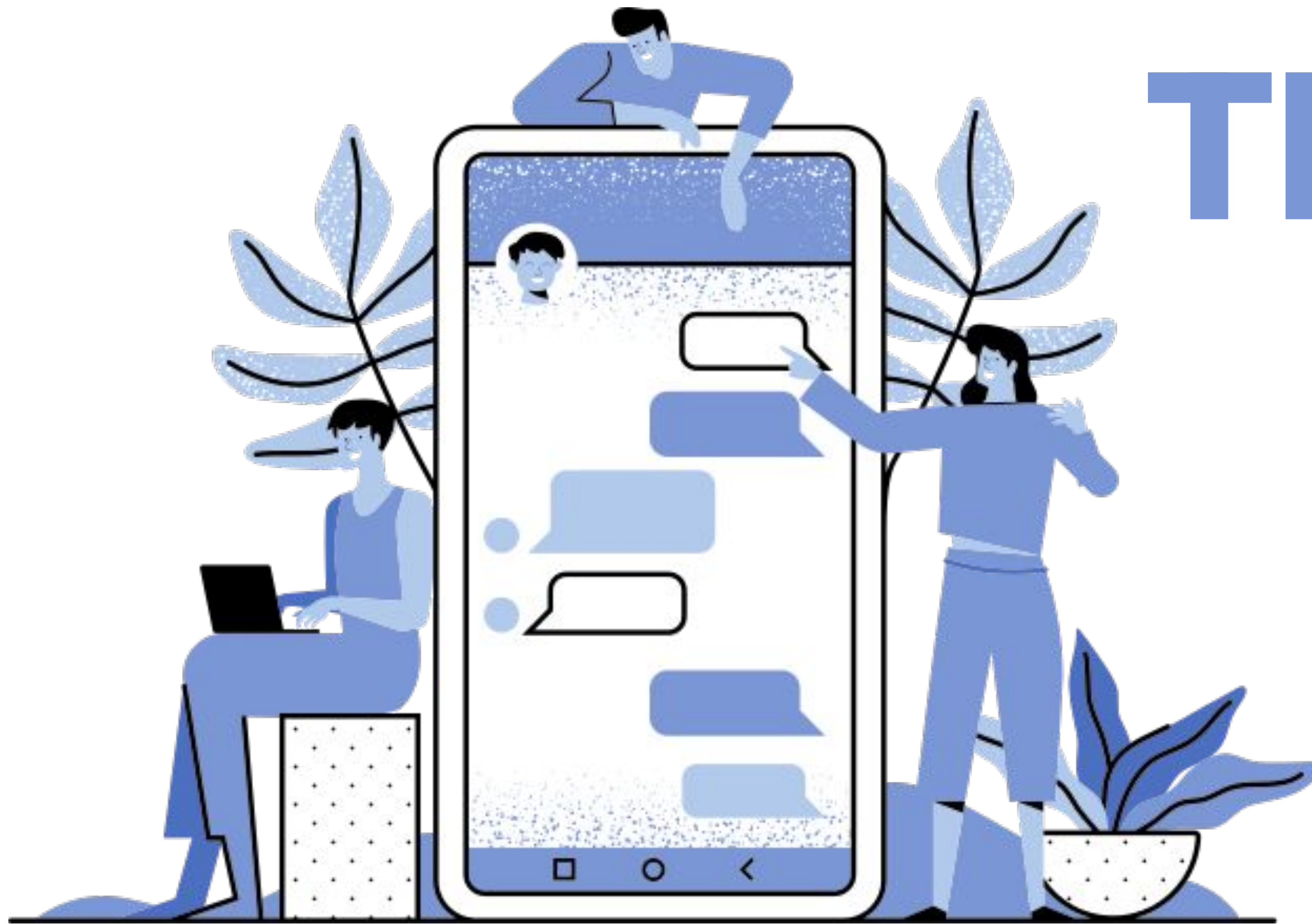


Tableau User Guide

Create a user friendly
document that describes
how to use the dashboard

CONCLUSION & NEXT STEPS

- This is just scratching the surface on different demographics that can show the past racial inequities current effects on residents of Greenbelt
 - Other factors can be considered (crime, modes of transportation to work/carpooling, poverty status, food stamps/supplemental nutrition assistance, employment status, etc.)
- As data is updated in the Census (or if better data is found), this dashboard can be updated
- A future capstone project could focus on a geographical analysis of this ACS data



THANK YOU

Any questions?