

RC XETAL CLEAN

FILM-FORMING CLEANING PASTE FOR REMOVING DUST, SOOT AND OTHER INTERIOR CONTAMINATIONS

KIK report: favourable opinion due to interaction with subsoil

Peeling



ADVANTAGES OF RC XETAL CLEAN

- ✓ Environmentally friendly and easy to use
- ✓ Thorough cleansing deep into the pores
- ✓ Suitable for deep profiling such as works of art
- ✓ No chemical after-effect

Description

RC XETAL CLEAN is a film-forming latex-based cleaning paste to remove soot, dirt, dust and nicotine on interior walls and sculpted artwork. The product can be easily applied, after drying the product forms an easily peelable film. Peeling off the film mechanically removes contamination and cleans the surface deep into the pores. The product is highly suitable for post-fire clean-up.

RC XETAL CLEAN is available in different types:

- RC XETAL CLEAN 1: EDTA-free latex dispersion.
- RC XETAL CLEAN 3: Intensively formulated latex dispersion.
- RC XETAL CLEAN 6: Ammonia-free

RC XETAL CLEAN is based on the cleaning technique which incorporates harmful or aesthetically disturbing products mechanically or chemically in an easily removable film. The contamination which is chemically anchored to the substrate can be dissolved by the addition of complexes in the paste. The concentration of complexes is adapted in function of the each problem in order to ensure a maximum cleaning effect without affecting the substrate. Inform about the additives or additional complexes for our RC XETAL CLEAN.

Properties

- Suitable for thorough cleaning of deep profiles
- High efficiency, even when mechanically sprayed
- No chemical after-effects
- No nuisance caused by water
 - o No deterioration of plaster restorations and works of art
 - o Present salts are not dissolved back into the substrate
 - o No risk of smudging
 - o No mould formation

Substrate

RC XETAL CLEAN 3 is extremely suitable for interior cleaning of various surfaces such as brick, concrete and cementitious artificial stone, limestone, sandstone, chalkstone, glazed bricks, marble, plasters, paints, plastic, metal ...

It is recommended to first perform a test with the product on an inconspicuous area to evaluate the cleaning result.

Application instructions

Substrate preparation

All surfaces not to be cleaned should be adequately shielded. The surface must be dry and free from excess dust and loose particles.

Application

Mix RC XETAL CLEAN well and apply the product using a brush or an airless device. To obtain optimum cleaning results, the layer thickness should be between 2 and 3 mm, depending on the type of substrate. Spray the product at a distance of approximately 15cm and with an overlap of 50% to achieve this thickness without any runners. In concave cavities of sculpted surfaces, extra care should be taken to limit the layer thickness of the film.

Removal

After 24 hours, the film can be removed by pulling evenly and with constant tension. Where necessary, the film can be incised. The product is light beige in colour and becomes transparent brown during drying; this indicates that a film is being formed. After complete drying (min. 24 hours, max. 36 hours) the elastic film can be removed. Avoid waiting times longer than 3 days, the elasticity of the film will be greatly reduced and difficult to peel off.

If necessary, gently clean the surface with a slightly moistened, soft sponge.

Consumption

Consumption depends on the degree of soiling and the substrate, as well as the structure of the object being cleaned.

- Flat surface: approximately 0,7 (brush) to 1,0 (machine) kg/m².
- Sculptured surfaces: approximately 1,0 (brush) to 3,0 (machine) kg/m².

Technical information

Physical state	Thick liquid
Base	Natural latex with dirt-absorbing fillers and cleaners
Colour	Light beige
Odour	Characteristic
pH	9 - 11

Security

Respiratory protection with a particle filter P2 must be worn during spraying, together with protective goggles. Wear suitable protective gloves and clothing.

For more information, consult the most recent Safety Data Sheet.

Remark

- RC XETAL CLEAN is ready-to-use and should never be diluted.
- The minimum ambient and contact temperature for application is 10°C.
- Always install a test sample before starting the overall project.
- Larger quantities of leftover product should be disposed of in the original containers in accordance with applicable regulations. Completely empty, clean containers should be recycled. All material contaminated after application should be disposed of in accordance with applicable regulations.
- Do not dispose of with household waste. Do not discharge into the sewage system. Do not empty into drains.

Cleaning of equipment

Clean with plenty of cold water and soap or tools after complete polymerization.

Rinse airless units sufficiently with water and sufficient amount of detergent.

Storage / Shelf life

1 year after manufacturing in original, closed packaging. Store frost-free (+5°C to + 20°C) in a dark room.

Packaging

20 kg RC XETAL CLEAN 1 (art.nr. S10484)

20 kg RC XETAL CLEAN 3 (art.nr. S10482)

20 kg RC XETAL CLEAN 6 (art.nr. S10472)

Types of airless

Brand	Type of pump	Pistol	Spray	Airflow
Delta Industries	1140 i	1 pistol	0,021 ²	4,2 l/mn
	6900 GH Pumpe mit Ansaugstutzen	1 pistol	0,021 ²	5,7 l/mn
Titan	6900 GHD Eintauchpumpe	1 pistol	0,021 ²	5,7 l/mn
Graco	Mark VII HD	HD Gun ... (without filter)	WRLP 1229 (wide range low pressure) 60cm wide and opening 29inch For the reveal : PAA 517 (less width, less material loss)	150 bar on pump without filter on machine
Wagner	HC 45 E SSP	1 pistol	0,021 ²	5,6 l/mn

Photo's



Post-fire

Application

24 hours drying

Peel off

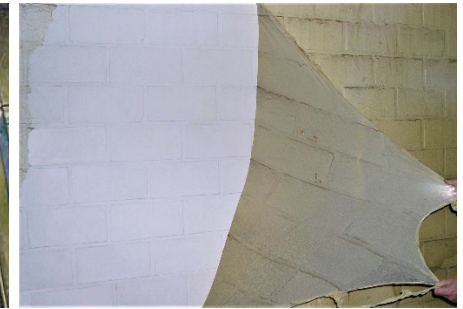
Result



Cleaning of bricks



Cleaning of statues



Cleaning of paintwork

Legal Notes

The information and recommendations contained in this document have been prepared in good faith based on the current knowledge and experience of Reynchemie, concerning products that are correctly stored, handled and applied under normal conditions and in accordance with our guidelines. Since practical conditions, materials and substrates may vary from one application to another, Reynchemie cannot guarantee the merchantability or suitability of the product for a particular purpose. The user remains responsible for carrying out preliminary tests to verify the compatibility of the product with the intended application. All stated values and properties are average results determined at 20 °C, reasonable deviations are acceptable. Products used in combination with this product within the same application system (such as preparation or finishing products) must always be applied according to the instructions provided in their respective technical data sheets. Reynchemie reserves the right to modify the composition or properties of its products without prior notice. Except where mandatory legal provisions apply, Reynchemie accepts no liability for damage resulting from improper application of its products or from failure to comply with the provided instructions. Third-party property rights must always be respected. All orders are accepted under the applicable sales and delivery conditions. Users must always consult the latest version of the local Technical Data Sheet (TDS) and Safety Data Sheet (SDS) for the respective product; copies will be provided upon request if not available on our website www.reynchemie.com. This document supersedes all previous versions.