



PRODUCTS FOR RENOVATION & RESTORATION

# CATALOGUE



## **TABLE OF CONTENTS**

Lime render	4
Facade paint	6
Interior & exterior plasters	8
Thermal insulation	10
Stone restoration	12
Grouting & consolidation mortars	15
Cleaning products	16
Peel-off cleaning	18
Stone reinforcement	19
Facade cleaners	20
Hydrophobic, Oleophobic & Anti-Graffiti	22
Wood restoration	26
Treatment of rising damp	28
Basement sealing	30
Concrete repair	32
Concrete treatment	34
Floor screeds	36
Floor treatment	37
Various building specialties	38
Saint-Astier®	40
Brantho Korrux	42

# REYNCHEMIE

PRODUCTS FOR RENOVATION & RESTORATION

Since 1988, Reynchemie nv has been a successful, pioneering company with innovative products for both new constructions and restoration and renovation products for our historic heritage. With an extensive range, Reynchemie offers not only quality but also excellent service with advice, technical support, commercial follow-up, and site visits. Our products are used in facade cleaning, water repellence and rising damp treatment, wood renovation, basement waterproofing, natural stone and concrete repair (hydraulic and epoxy), lime mortars, lime wash, paints, concrete treatment and maintenance, chemical anchors, and more.

In addition to our own products, Reynchemie nv is the exclusive distributor in the Benelux for the lime products of Saint-Astier® and the distributor of the paint products of Branth-chemie.



**Do you have any questions or need advice about our products?**

Our commercial and technical team is always ready to assist you and can be reached by phone at 051/ 24 25 27 or via email at [reynchemie@reynchemie.com](mailto:reynchemie@reynchemie.com).

Reynchemie guarantees professional advice and prompt handling of your inquiries.



Industrieweg 25 - B-8800 Roeselare  
Tel. +32 (0)51/ 24 25 27  
[reynchemie@reynchemie.com](mailto:reynchemie@reynchemie.com)  
[www.reynchemie.com](http://www.reynchemie.com)





Caulking is a technique that has been used for hundreds of years to finish exterior and interior walls. It is actually a thin layer of lime render (2 - 4 mm) that leaves the underlying structure of the masonry visible.

Caulking is a beautiful restoration product, but can also find its place in new buildings.



Water and vapour permeability  
RICH report: DI : 2013.11921



100% cement-free  
SETEC report12.2912121.007.01

# Lime render

## 100% CEMENT-FREE LIME RENDER BASED ON NATURAL HYDRAULIC LIME

### RC KALEI

RC KALEI is a 100% cement-free lime render based on natural hydraulic lime (NHL 3.5) from St.-Astier® and mineral fillers. To be placed with our specially developed lime render brush.

#### Advantages

- Contains 0% cement, ash and other pozzolanic additives
- Easy processing, very good plasticity
- Excellent water vapour permeability
- Moisture regulating effect, no shrinkage cracks
- Approaches best the original and traditional lime renders

**Packaging** 25 kg

**Consumption** ± 3 - 5 kg /m<sup>2</sup> in 2 layers



# Facade paint

## A STYLISH FINISH TO YOUR HOME

### RC SILOXCOAT

A lime-matt, water-vapour permeable, driving rainproof, and dirt-repellent water-based facade paint based on a silicone resin emulsion. It is suitable for use on new facades or the renovation of old facades. It is often utilised as a finishing coat on RC Kalei.

RC Siloxcoat is a siloxane paint available in all commonly used colour charts such as RAL, NCS, and more.

**Packaging** 5 L - 10 L

**Consumption** 7 - 9 m<sup>2</sup> /L /layer



- ✓ Highly water-vapour permeable
- ✓ Self-cleaning and dirt-repellent
- ✓ Prevents growth of microorganisms

- ✓ Prevents streaking
- ✓ Environmentally friendly
- ✓ Excellent resistance to driving rain





## RC CALCO

"Traditional" lime paint ready for use, ideal for vintage-style finishes. This pure lime paint exhibits excellent properties against mould and bacteria and can be applied both indoors and outdoors.

RC Calco is available in all colours featured in the extensive RC Calco colour palette.

**Packaging** 5 kg - 20 kg

**Consumption** 5 - 6 m<sup>2</sup> /kg /layer



- ✓ Ready for use
- ✓ Suitable for exterior and interior applications
- ✓ Extremely frost and thaw resistant
- ✓ High water vapor permeability

- ✓ Good adhesion to mineral surfaces
- ✓ Prevents the growth of mould and microorganisms
- ✓ Environmentally friendly

# Interior & exterior plasters

## BASED ON LIME

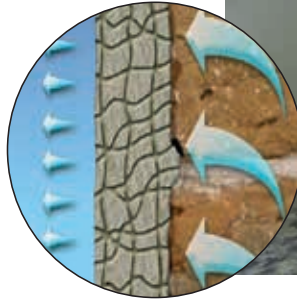
### RC SANISEL

Sanitation and salt-buffering mortar formulated from natural lime for plastering interior and exterior walls affected by salts and moisture. RC Sanisel has excellent vapour permeability.

Conforms to EN 998-1 and DTU 26.1.

**Packaging** 25 kg

**Consumption** 12 kg /m<sup>2</sup> /cm thickness



### RC INTRALIME G

Light grey ground plaster for interior work based on lime and anhydrite. The high lime content gives the plaster high flexibility, good water vapour permeability and allows optimal, easy application.

Can be applied to all dry and absorbent substrates, including ceilings and insulating masonry. Also easily sprayable with a mortar pump.

Conforms to EN 13279-1

**Packaging** 20 kg

**Consumption** 1,1 kg /m<sup>2</sup> /mm thickness ( 0,7 - 8 cm thickness)



### RC INTRALIME F

Thin finishing coat to level all irregularities with two or more coats and to obtain a smooth finish for subsequent decoration.

Suitable for smoothing RC Intralime G, also suitable for direct plastering on plasterboard, blocks, slabs or cellular concrete panels. Also easily sprayable with an airless sprayer.

Conforms to EN 13279-1

**Packaging** 25 kg

**Consumption** 1 kg /m<sup>2</sup> /mm thickness ( 1 - 4 mm thickness)



### RC CALCOLISS 300

Ready-to-use lime filler based on aerated lime, exceptionally white with a very fine structure (300 microns). Composed of fat lime, marble powder and adapted additives to ensure good workability and adhesion.

For both interior and exterior applications. (cf. EN-459)

**Packaging** 25 kg

**Consumption** +/- 0,5 kg /m<sup>2</sup> (max. 1 mm thickness)



---

## CHAUSABLE BY SAINT-ASTIER®

High-strength ground plaster based on natural hydraulic lime. Due to the balanced ratio of elasticity and hardness, low-tension hardening takes place. Ideal for restoration of old walls in historic buildings, both indoors and outdoors.

Conforms to EN 998-1

**Packaging** 25 kg

**Consumption** 1,8 kg /m<sup>2</sup> /mm



---

## ECOMORTAR® R100 BY SAINT-ASTIER®

Ready-to-use base coat with high adhesion based on natural hydraulic lime from Saint-Astier®. Especially for levelling various substrates, also on old plasters and old paint layers. **For interior and exterior use.**

For interior applications only, a budget-friendly version, **ECOMORTAR® R50**, can be used.

**Packaging** 20 kg

**Consumption** 1,7 kg /m<sup>2</sup> /mm thickness



---

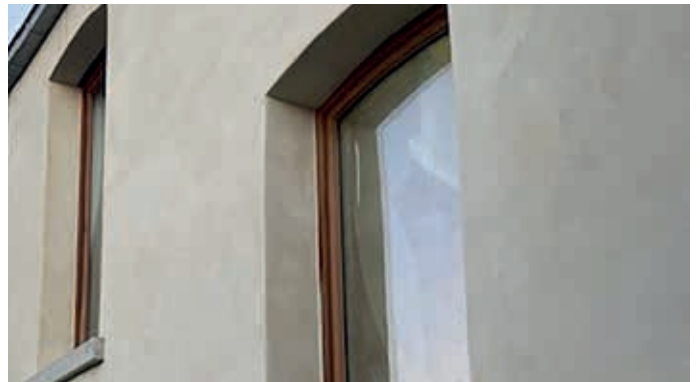
## ECOMORTAR® FINISH BY SAINT-ASTIER®

Thin, ready-to-use mineral finishing coat based on NHL 3.5. This product contains no cement or pouzzolans. Can be applied in thicknesses of 3-15 mm and is ideal for plastering with various finishing options (rubbed, sanded, punched, compacted...). Can also be used as pointing mortar for brick and natural stone.

Available in various standard colours.

**Packaging** 25 kg

**Consumption** 1,8 kg /m<sup>2</sup> /mm



---

## RPC BY SAINT-ASTIER®

Traditional plaster based on gypsum, lime, silica sandstone and specific additives. Ideal for making and restoring mouldings and rosettes on old brick, stone and wooden supports.

Can be applied in thicknesses of 2 to 3 cm per layer.

**Packaging** 30 kg

**Consumption** 1,5 kg /m<sup>2</sup> /mm



# Thermal insulation

## BASED ON LIME

### NOVASKIN® THERMO PLUS

Thermal and acoustic insulation plaster, 100% mineral-based and non-combustible. Suitable for both indoor and outdoor applications. **Up to 15 times more effective** at insulating than traditional plasters at the same layer thickness, with thermal conductivity measured under realistic conditions. Even in damp conditions, the insulating effect remains fully effective.

**Packaging** 12 kg

**Consumption** 3 - 3,5 kg /m<sup>2</sup> /cm thickness



### NOVASKIN® COATING

Ultra-fine, mineral-based finishing plaster made from natural hydraulic lime (NHL). For a natural, matt finish with a velvety-soft texture. Ideal as a top coat over NOVASKIN® THERMO PLUS. Suitable for both interior and exterior use. Available in a range of standard colours.

**Packaging** 25 kg

**Consumption** 1,6 kg /m<sup>2</sup> /mm



Thickness in cm	R-value (M <sup>2</sup> .K)/W
2	0,25
4	0,50
6	0,76
8	1,01
10	1,26

The combination of hemp, water and lime creates a mixture with excellent thermal and acoustic properties. It regulates temperature and humidity, prevents mould growth and makes the building a comfortable, healthy environment. It is fire- and pest-resistant, lightweight and forms a solid wall that is vapour-permeable, helping to prevent excessive humidity and condensation.

## ISOCANNA

100% natural hemp shives, unfiltered, ideal for lightweight insulating mortars and lime-hemp concrete with excellent thermal and acoustic properties.

**Packaging** 200 L / 20 kg



## BATICHAVRE PLUS

Hydraulic lime binder for mortars and concrete containing hemp shives. It offers excellent thermal and acoustic insulation, fire resistance, vapour permeability...

**Packaging** 25 kg



## Thermal resistance per mixing ratio – R-value – m<sup>2</sup>·K/W

Thickness in cm	3	4	5	6	7	8	15	20	25	30	35	40	45	50
Plasterwork 4 + 1	0,25	0,33	0,42	0,5	0,58	0,67								
Wall & floor 2 + 1							2,05	2,74	3,42	4,10	4,80	5,48	6,16	
Roof underlay 1 + 1								3,85	4,81	5,77	6,73	7,69	8,65	9,62

## KALAMUA

Single-coat interior and exterior plaster based on natural hydraulic lime (NHL), specially developed for use on hemp blocks and hempcrete. Highly vapour-permeable, suitable for machine application, flexible and easy to work with. Available in a range of standard colours.

**Packaging** 25 kg

**Consumption** 1,6 kg /m<sup>2</sup> /mm



# Stone restorations

## NATURAL REPAIR

### ST. ONE BY SAINT-ASTIER®

St.One® is a one-component ready-to-use repair mortar, based on natural hydraulic lime (NHL). Historic facades, monuments, flatwork and sculptures in natural stone, brick, terracotta... can be restored in a natural way.

The repair mortar can be applied from 1 to 10 cm. Fully cured repairs have the same physical and mechanical properties and texture as natural stone. The repairs can therefore be worked in the same way as the original stone.



**Packaging** 5 kg (coloured) - 20 kg (coloured) - 25 kg (neutral)

**Consumption** 1,6 - 1,7 kg /dm<sup>3</sup>

- ✓ Long processing time
- ✓ Shrink-free curing
- ✓ Easy processing, even in thicknesses of up to 10 cm
- ✓ Good imitation of existing natural stone
- ✓ Aging like natural stone
- ✓ Frost- and UV-resistant
- ✓ Colourfast
- ✓ Highly water-vapour permeable





## RC AMONIT

Mineral, two-component repair mortar based on zinc oxide for repairing natural stone, bricks and terracotta, consisting of ground natural stone (powder) and a mineral binder (liquid).

Fully cured repairs with RC AMONIT can be processed in the same way as the original stone. This allows historical facades and monuments to be restored in the most lifelike way. Available in various types in terms of stone hardness, colour and grain structure.



**Packaging** sets of 5kg - 10kg - 27 kg

**Consumption** 2,2 kg /dm<sup>3</sup>





## RC NAUTIL MONO

Decorative micro mortar based on natural hydraulic lime. Suitable for refurbishment or restoration work of facing bricks and architectural decoration.

RC Nautil Mono is available in various base colours. It gives the substrate the appearance and texture of natural stone. The micro mortar can be applied both indoors and outdoors.



**Packaging** 20 kg

**Consumption** 2,5 kg /m<sup>2</sup>



P1



P2



P3



P4



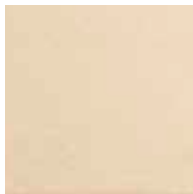
P5



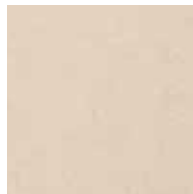
P6



P7



P8



P9



P10



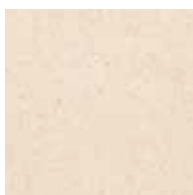
P11



P12



P13



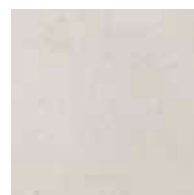
P14



P15



P16



P17



P18

# Grouting & consolidation mortars

## RC ASTIVO

Coloured lime based on natural hydraulic lime (NHL 3.5). By adding grouting sand, you obtain a lime mortar for grouting. It is softer and more porous compared to mixtures with cement.

RC Astivo is available uncoloured (NHL 3.5) and coloured in 10 colours. The grouting mortar should always be mixed with grouting sand (12.5 kg RC Astivo + 50 kg sand).

Conforms to ENV 459-1 of St-Astier.

**Packaging** 12.5 kg

**Consumption** 1,4 - 3 kg /m<sup>2</sup> (7 - 15 kg mixture /m<sup>2</sup>)



## COULINEX LIANT BY SAINT-ASTIER®

Injection mortar based on natural hydraulic lime (NHL), without addition of cement, pozzolans or siliceous materials. Developed for filling cracks and hollow spaces in masonry, especially in monumental and historical buildings.

**Packaging** 25 kg

**Consumption** highly dependent on the applied procedure



# Cleaning products

## SPECIFIC CLEANING FOR INDOOR AND OUTDOOR USE

### RC BIOZYM CLEAN

Liquid enzyme-based cleaner for thoroughly cleaning several outdoor surfaces. The specially selected enzymes in the product break down dirt like the enzymes in our bodies help digest food. RC BIOZYM CLEAN is 98% biodegradable at 28 days. A rain shower washes away the broken-down dirt and reactivates the enzymes for a long after-effect.

#### Applicable substrates:

Brick, terracotta, enamelled brick, natural stone, bluestone, marble, architectural concrete, washed concrete, aerated concrete, silicate brick, sand-lime brick, mineral plaster...



**Packaging** 5 L - 10 L - 25 L

**Consumption** 0,1 - 0,2 L /m<sup>2</sup>

### GREEN OFF AG

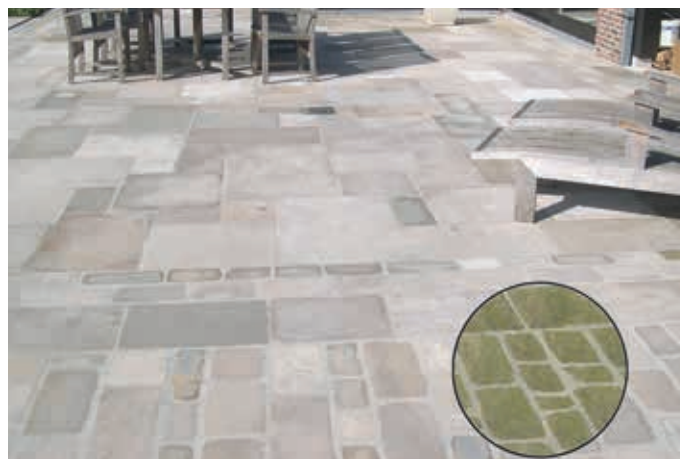
Green Off AG is ideal for combating and removing all kinds of green deposits from various surfaces such as plastic, wood, (ceramic) floors, roof tiles, slates, facades, etc.

Use biocides safely. Always read the label and product information before use.

Authorisation number BE-REG-02125

**Packaging** 5 L - 10 L - 25 L

**Consumption** 0,1 - 0,2 L /m<sup>2</sup>



---

## RC RUST REMOVER

Efficiently and quickly removes all rust stains caused by iron, rusting water, fertilisers...  
Makes sanding and sandblasting unnecessary.

**Packaging** 10 L

**Consumption** highly dependent on substrate



---

## RC CEMENT CLEAN 2

RC Cement Clean 2, with its unique formula without hydrochloric or phosphoric acid, has been specially developed to remove efflorescence and cement slurry on all types of masonry without damaging the substrate.

**Packaging** 10 L - 25 L

**Consumption** +/- 0,6 L /m<sup>2</sup>



---

## RC BETOSTRIP

Heavy-duty floor stripper for efficient removal of curing compound, rubber tyre marks, etc. on floors, terraces, driveways and other concrete pavements.  
Easy to apply and causes no hazardous chemical solvent fumes.

**Packaging** 25 L

**Consumption** 0,2 L /m<sup>2</sup>



---

## RC CONCRETE CLEAN+

Super-concentrated cleaning and maintenance product with extra nano effect, specifically developed for hardened and polished concrete floors. With every cleaning, it improves the maintenance and quality of the concrete.

**Packaging** 5 L - 10 L

**Consumption** 8 - 10 ml /L maintenance - 32 - 40 ml /L deep cleaning



---

## RC GLUE REMOVER

Powerful stripper for all types of glue, ink and rubber marks on brick, wood, natural stone, concrete, metal and glass.

**Packaging** 1 kg - 5 kg - 10 kg

**Consumption** ± 0,3 kg /m<sup>2</sup>



---

## RC DECAP 1

Powerful paint stripper, especially suitable for removing paints, varnishes and glue residues on concrete, wood and mineral substrates.

**Packaging** 5 L - 10 L - 25 L

**Consumption** ± 0,3 - 0,6 L /m<sup>2</sup>



---

## RC DECAP STRIP

Alkaline stripper for removing up to 30 layers of paint, incl. lead-based paints. Application on various substrates such as metal, brick, limestone, concrete.

**Packaging** 20 kg

**Consumption** ± 3 kg /m<sup>2</sup>



# Peel-off cleaning

## INNOVATIVE CLEANING OF CULTURAL HERITAGE

### RC XETAL CLEAN

Film-forming latex-based cleaning paste to remove soot, dirt, dust and nicotine from interior walls and sculpted artwork. RC Xetal Clean can be applied easily, after drying the product forms an easily peelable film.

- Highly suitable for post-fire clean-up
- Environmentally friendly and user-friendly
- Thorough cleaning down to the pores



### Different types RC XETAL CLEAN

#### RC Xetal Clean 1

EDTA-free latex dispersion.

#### RC Xetal Clean 3

Intensively formulated latex dispersion.

#### RC Xetal Clean 6

Ammonia-free latex dispersion.

*Add the specially formulated **RC XETAL CLEAN ADDITIVE**, which contains extra cleaning agents, to enhance the effectiveness of the film-forming cleaning paste.*

### Cleaning process

- All surfaces not to be cleaned should be adequately shielded. The surface must be dry and free from excess dust and loose particles.
- RC XETAL CLEAN is applied with a brush or with an airless device. To obtain optimum cleaning results, the layer thickness should be between 2 and 3 mm, depending on the type of substrate. In concave cavities of sculpted surfaces, extra care should be taken to limit the layer thickness of the film.
- After 24 hours, the film can be removed by pulling evenly and with constant tension. Where necessary, the film can be incised. The product is light beige in colour and becomes transparent brown during drying; this indicates that a film is being formed. After complete drying (min. 24 hours, max. 36 hours) the elastic film can be removed. Avoid waiting times longer than 3 days, the elasticity of the film will be greatly reduced and difficult to peel off.
- If necessary, gently clean the surface with a slightly moistened, soft sponge.



AFTER FIRE

APPLY

24h DRYING TIME

PEEL OFF

RESULT

# Stone reinforcement

## FOR A SOLID SURFACE

### RC STONE REINFORCER

Colourless impregnating product based on silicic acid esters (75% active ingredient) to re-harden crumbled building materials without significantly altering the properties of the material itself. All absorbent types of stone can be reinforced, such as brick, limestone...



K.I.K. REPORT D: 2L13 DI 93/5118.2

**Packaging** 25 L

**Consumption** 0,5 - 4 L /m<sup>2</sup>



### Reinforcement procedure

- Apply the product liberally (do not spray) to the surface to be treated, e.g. using a brush or a low-pressure sprayer (garden sprayer). Work from top to bottom, using horizontal back-and-forth movements. Each treatment consists of several applications, wet-on-wet, with a waiting time of a few minutes.
- Depending on the stone or substrate, several treatments may be necessary, with an interval of at least 24 hours.

### Follow-up treatment

- After 2 weeks, the surface or stone can be touched up with a restoration mortar (RC Amonit or St.One), painted, or treated with a solvent-based water repellent (e.g. RC 224 and RC 900).
- After 3 weeks, the surface can be treated with a water-based water-repellent (e.g. RC Hydrocrème 4 and RC 805 ECO).



Due to the ravages of time and unwanted products such as graffiti, the facade of a home or commercial building may be in need of a thorough cleaning. There are several ways to clean a facade. In each case, it is important to properly inspect the substrate and determine the extent of the contamination. This way, the right treatment can be carried out without serious damage.

	RC FACADE P	RC BRICK-CLEAN	RC ALKALIT 502
FORM	THICK LIQUID	THICK LIQUID	THICK LIQUID
BASE	HYDROFLUORIC ACID	AMMONIUM BIFLUORIDE	AMMONIUM FORMATE
PH	< 1	3	8.5

#### APPLICATION SUBSTRATE

BRICK	***	***	*
TERRACOTTA	**	**	*
ENAMELLED BRICK	**	*	*
NATURAL STONE		*	***
SILICATE BRICK / LIMESTONE		*	***
MINERAL PLASTER			*
BLUESTONE			*
MARBLE UNPOLISHED		*	*
CONCRETE	**	***	***
ARCHITECTURAL CONCRETE	*	**	***
WASHED-OUT CONCRETE (SILEX)	***	*	*
CELLULAR CONCRETE		*	*

LEGEND :      \* GOOD            \*\* VERY GOOD            \*\*\* EXCELLENT

# Facade cleaners

## CHEMICAL SOLUTIONS FOR A BEAUTIFUL FACADE

For heavy soiling on brick, concrete and cementation, an acidic facade cleaner can be used. Natural stone, limestone and sandstone can only be safely cleaned with an alkaline cleaner.

### RC FACADE P

pH < 1

Ready-to-use, thixotropic acid cleaner. This product gently yet extremely effectively dissolves surface soiling from brick, architectural concrete and other porous, acid-resistant surfaces.

**Packaging** 10 L

**Consumption** 0,3 L /m<sup>2</sup>



### RC BRICK-CLEAN

pH 3

An acidic facade cleaner based on ammonium bifluoride for heavily soiled mineral substrates including concrete, slate, brick, terracotta and basaltic stone. May attack calcareous stone and glass.

**Packaging** 10 kg

**Consumption** 0,3 kg /m<sup>2</sup>



### RC ALKALIT 502

pH 8.5

Environmentally friendly alkaline facade cleaner for mineral substrates, specially developed to remove atmospheric soiling. Non-aggressive for substrate, environment and user. Does not attack the surface of limestone, the original patina colour remains.

**Packaging** 20 kg

**Consumption** 0,5 kg /m<sup>2</sup>



A hydrofuge or facade impregnator makes a facade water-resistant without reducing water vapour permeability. After correct application, the façade is protected against frost damage, acid rain, algae and mould growth. In addition, a hydrofuge has an insulating property.

	FORM	SILICONE BASE	
RC HYDROCREME 4	CRÈME	SILAN	SOLVENT FREE
RC 900	THIN LIQUID	SILAN	SOLVENT
RC 224	THIN LIQUID	SILAN / SILOXAN	SOLVENT
RC 805 ECO	THIN LIQUID	SILAN / SILOXAN / POLYMERS	WATER
RC SILAN 100	THIN LIQUID	SILAN	
RC HYDROTOP	LIQUID	SILAN	WATER
RC 809 OG	THIN LIQUID	FLUORINATED RESINS	WATER
RC WAX	LIQUID	WAX	WATER
RC 810 AG	THIN LIQUID	FLUORINATED RESINS	WATER

APPLICATION SUBSTRATE	RC HYDROCREME 4	RC 900	RC 224	RC 805 ECO	RC SILAN 100	RC HYDROTOP	RC 809 OG	RC WAX	RC 810 AG
BRICK	***	*	***	***	*		***	***	***
TERRACOTTA	***	*	*	***	**	**	***	***	***
NATURAL STONE	***	*	*	**	**		**	***	***
SILICATE BRICK / LIMESTONE	***							***	*
MINERAL PLASTER	***		*	***	***		***	***	***
BLUESTONE		*			*			***	***
CONCRETE	*	**	**	**	***		**	***	**
ARCHITECTURAL CONCRETE	*	**	**	**	***		**	***	**
WASHED-OUT CONCRETE (SILEX)	*	**	**	**	***		**	***	**
CELLULAR CONCRETE	***							***	*
ROOF, TILE AND CONCRETE TILES			*	**		***			

LEGEND : \* GOOD \*\* VERY GOOD \*\*\* EXCELLENT

# Hydrophobic, oleophobic & anti-graffiti

PROTECTS THE FACADE AGAINST MOISTURE AND ATMOSPHERIC POLLUTANTS



Efficiency, vapour permeability and durability over time are demonstrated in several reports, these show that our type hydrofuges achieve the highest score A in each case.



## RC HYDROCRÈME 4

High-performance concentrated hydrophobic cream (25% active matter) based on alkylalkoxysilanes and fluorocarbon resins for porous mineral substrates (brick, natural stone, concrete...) **Does not affect bluestone and glass.**

In addition, the product also protects the treated substrate against frost damage, contamination, micro-organisms, while it does not reduce vapour permeability (sd value). The substrate remains "breathable".

- ✓ Excellent penetration capacity and strong pearl effect
- ✓ Easy application
- ✓ Very UV-resistant

**Packaging** 4,5 kg - 20 kg

**Consumption** 0,15 - 0,5 kg /m<sup>2</sup>



**WTCB RAPPORT REN-0013 N - class 3A+**

*Efficacy on brick after accelerated ageing 100%*

*Efficacy on silicate brick after accelerated ageing 100%*

## RC HYDROTOP

Silane-based hydrofuge specially developed to protect roof, tile and concrete tiles. After application, the product forms a protective layer that prevents the fouling of roofs and limits the formation of micro-organisms.

**Packaging** 10 L - 25 L

**Consumption** 0,3 - 1 L /m<sup>2</sup>



---

## RC SILAN 100

Colourless solvent-free 100% concentrated moisture repellent for low-porosity mineral building materials such as concrete or exposed concrete.

**Does not affect bluestone and glass.**

**Packaging** 10 L - 25 L

**Consumption** 0,2 - 0,5 L /m<sup>2</sup>



---

## RC 900

Colourless silane-based hydrofuge (10% active matter) for treating low-porosity mineral substrates. UV- and alkali-resistant without changing the aspect of the substrate.

**Does not affect bluestone and glass.**



**K.I.K. REPORT D: 2L13 13/93/5118**

**Packaging** 10 L - 25 L

**Consumption** 0,2 - 1,5 L /m<sup>2</sup>



---

## RC 224

Colourless siloxane-based hydrofuge (10% active matter) for treating highly porous mineral substrates. UV- and alkali-resistant without changing the aspect of the substrate.



**K.I.K. REPORT D: 2004.08263**

**Packaging** 10 L - 25 L

**Consumption** 0,2 - 1,5 L /m<sup>2</sup>



---

## RC 805 ECO

Solvent-free hydrofuge (10% active matter) based on five polymers of silanes, oligomeric siloxanes, fluorinated resin and bridging resin based on polyolefins. Ready-to-use, for treating substrates such as concrete, masonry and natural stone.



**K.I.K. REPORT D: 2004.0892**

**Packaging** 10 L - 25 L

**Consumption** 0,5 - 1 L /m<sup>2</sup>





Graffiti is one of the most heavy façade contamination and is often very disfiguring. To best protect your facade or wall, it is recommended to apply an oleofuge or an anti-graffiti coating.

### RC 809 OG

Water-based hydrofuge and oleofuge based on nano technology that makes porous building materials moisture- and oil-repellent. Thus protecting the surface from contamination.

**Packaging** 10 L - 25 L

**Consumption** 0,2 - 1 L /m<sup>2</sup>

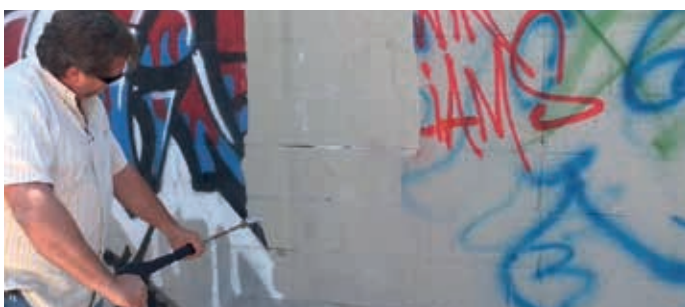


### RC WAX

Semi-permanent protective coating based on natural wax, to be used on substrates against graffiti, tags and other contaminations. Applicable on all substrates. In addition, RC Wax can be used on most common paint systems.

**Packaging** 10 L - 25 L

**Consumption** 0,14 - 0,16 L /m<sup>2</sup>



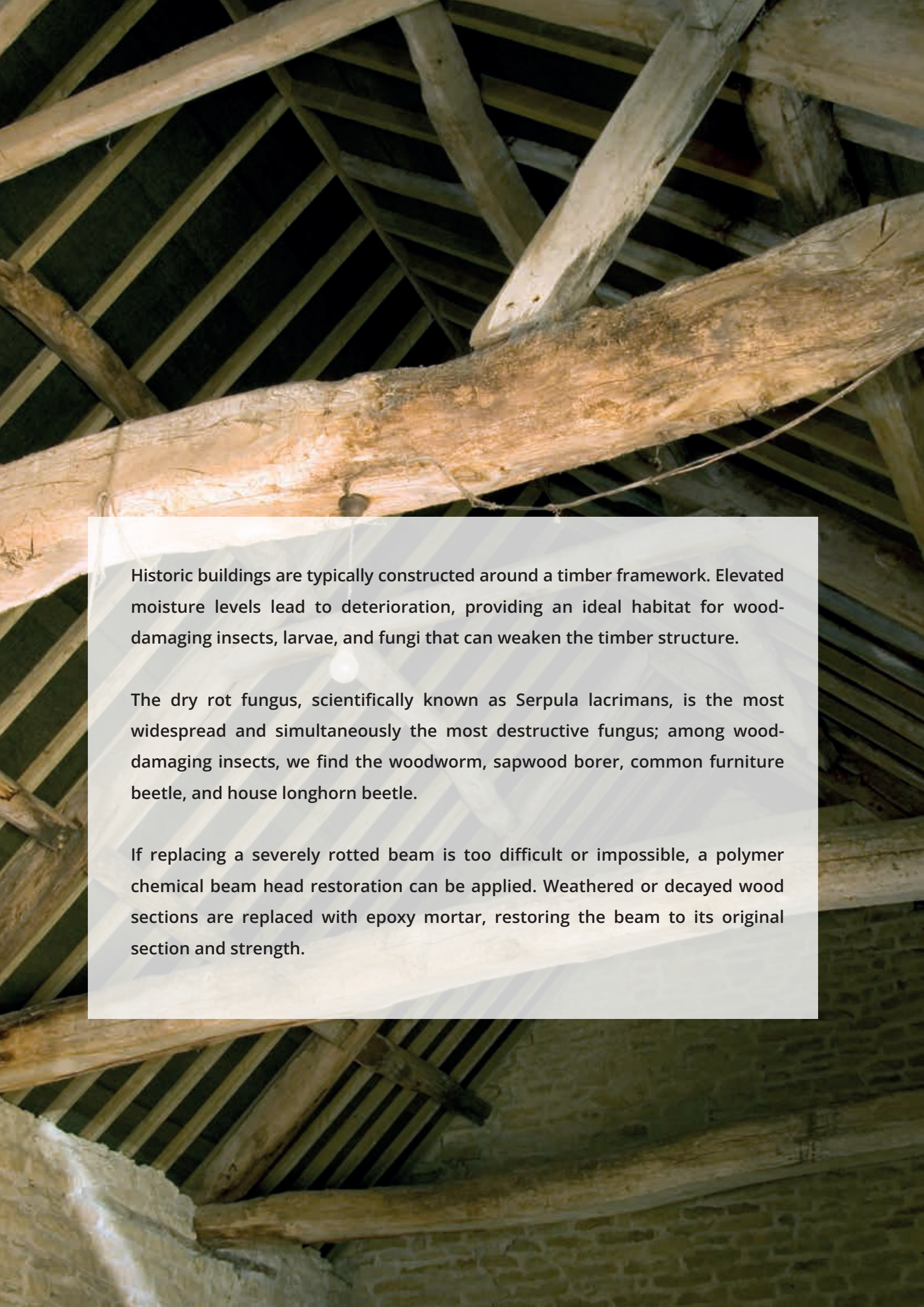
### RC 810 AG

All-in-One water-based impregnation based on fluoro-acrylic copolymers to protect porous, mineral untreated substrates from water and oils. Makes tag and graffiti removal easy. **Does not affect bluestone and glass.**

**Packaging** 10 L - 25 L

**Consumption** 0,2 - 1 L /m<sup>2</sup>





Historic buildings are typically constructed around a timber framework. Elevated moisture levels lead to deterioration, providing an ideal habitat for wood-damaging insects, larvae, and fungi that can weaken the timber structure.

The dry rot fungus, scientifically known as *Serpula lacrimans*, is the most widespread and simultaneously the most destructive fungus; among wood-damaging insects, we find the woodworm, sapwood borer, common furniture beetle, and house longhorn beetle.

If replacing a severely rotted beam is too difficult or impossible, a polymer chemical beam head restoration can be applied. Weathered or decayed wood sections are replaced with epoxy mortar, restoring the beam to its original section and strength.

# Wood restoration

## WOODWORK PRESERVATION AND PROTECTION

### RC POLYWOOD-EPOXY

A self-levelling three-component epoxy mortar for polymer chemical wooden beam head restoration. For repairing damaged beam heads and beam head joints due to wood rot. Wood severely affected by mould or wood beetles regains its original load-bearing function.



**KOMO product certificate**

**Packaging** set of 30 kg

**Consumption** 2,2 kg /dm<sup>3</sup>



### SARPECO 910

Water-dilutable colourless concentrate. Preventive and curative agent for treating both masonry and joinery against insects, termites, fungi and blackening.

**Authorisation number: 2113B.**

**Packaging** 5 L - 10 L - 25 L

**Consumption** depending on application



### RC WOOD PUTTY

Non-shrink epoxy putty consisting of two components for structural and decorative repairs of wooden statues, sculptures, wooden beams, window frames ...

**Packaging** 5 kg



### GLASS FIBRE RODS

Glass fibre rods for construction and renovation. They are completely inert, non-corrosive, non-conductive and weigh only one fourth of a steel bar.

**Available** in 3 m length

Ø 6mm - 10mm - 12mm - 20mm




### RC WOOD CREAM

Transparent cream for preventive protection of all exterior joinery (cladding, garden wood, carports...) against moisture, UV rays, wood rot, laurel, mould & algae.

**Packaging** 4,5 kg

**Consumption** 0,06 - 0,08 kg /m<sup>2</sup>





Rising damp is water that ascends through capillary action in porous materials such as stone or concrete. Damp walls cannot be finished with, for example, a plaster layer or wallpaper. Moreover, mould formation can occur, leading to an unhealthy indoor environment.

One of the causes of rising damp is the absence of a quality damp-proof course. This damp-proof course acts as a physical barrier between the moisture in the ground and the masonry. Sometimes, there is no damp-proof course at all, or it is damaged or improperly installed.

# Treatment of rising damp

## INJECTION PRODUCTS

### RC DRYGEL 80

Concentrated cream (80%) based on silanes and siloxanes for effective treatment of walls against rising damp. Effective and easy to use.

RC DRYGEL 80 can be applied with a manual gun or an electric gun.

 WTCB REPORT DE 622X910/EXT - class 3A+  
Buildwise

**Packaging** cartridge of 600 ml - 12 kg

**Consumption for a wall thickness of 10 cm**

2 cartridges /10 linear meters

1,33 kg /10 linear meters



### RC 310 ECO

Solvent-based liquid injection hydrofuge (12%) based on oligomeric siloxanes and organometallics. The product stops rising damp, even in cases of high concentration of capillary moisture in the masonry.

 WTCB REPORT DE 622X943-09 - class A  
Buildwise

**Packaging** 10 L - 25 L - 200 L

**Consumption for a wall thickness of 10 cm**

+/- 15 L /10 linear meters



### RC SULFASTOP ZB

RC Sulfastop ZB ensures a chemical transformation of hygroscopic salts such as sulfates into highly insoluble compounds. The salts can no longer migrate to the surface and therefore cannot deteriorate the wall and the cladding in this way.

**Packaging** 10 L - 25 L

**Consumption** 1 - 2,5 L /m<sup>2</sup>



# Basement sealing

## SEALING A BASEMENT QUICKLY AND EASILY

Moisture problems arise due to the basement not being completely waterproof, usually due to a combination of high groundwater levels and low moisture resistance of the basement floor and walls. Sometimes, this can have local causes, such as fine hairline cracks in the walls or the basement floor. In other cases, entire surfaces can become damaged and weakened due to a lack of maintenance.

### RC PLUG

Very fast setting cement for the immediate and long-lasting cessation of water leakages.

**Packaging** 4 kg



### RC PU-INJECT

Semi-flexible injection foam, highly suitable for stopping water leaks (cracks/fissures) in concrete or brick structures.

To be used with a manual injection pump and injection nozzle.

**Packaging** 1 kg - 5 kg



### STOPAQ 2100 AQUASTOP

Sealing paste for penetrations of pipes, cables, and tubes in wall penetrations to prevent the ingress of gases and flowing water.

Quick and easy to use, it remains permanently flexible.

**Packaging** 310 ml - 2 kg



---

## RC SALSPER

RC SALSPER is a stone-strengthening and silicification concentrate that is ideal for use on saline and damp substrates where moisture and salts can cause problems.

**Packaging** 5 kg - 10 kg - 30 kg

**Consumption** 0,1 - 0,4 kg /m<sup>2</sup>



---

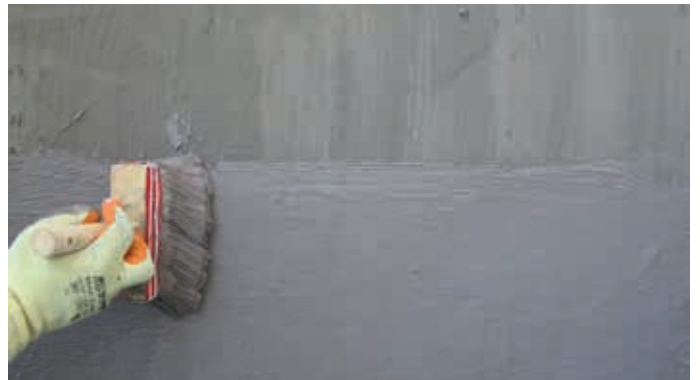
## RC MULTIFLEX 2M

Elastic 2-component mortar for waterproofing and protecting works. To be applied in 2 layers of 1mm each with roller or brush.

Forms an elastic impermeable seal, even under **negative pressure of 8 Bar**.

**Packaging** set of 20 kg

**Consumption** 1,5 - 1,7 kg /m<sup>2</sup>



---

## RC 221

Waterproof rendering intended for submerged masonry such as basements, pools... Applied with a float or a spray machine. Thickness of 10 to 20 mm.

**Packaging** 25 kg

**Consumption** 17 kg /m<sup>2</sup> /cm thickness



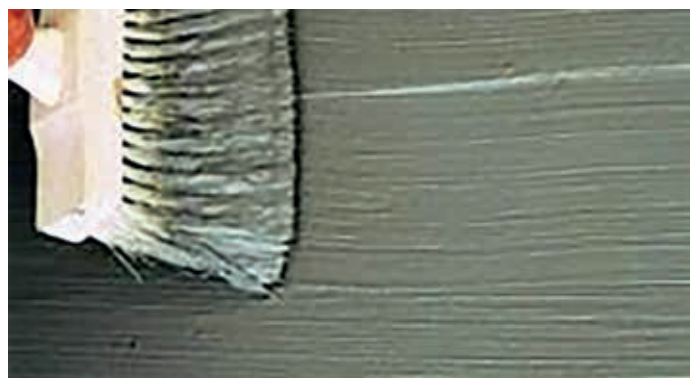
---

## 222 LANKOFUGEANT

Thin hydraulic water-repellent mortar based on cement, mineral fillers, and additives. Suitable for waterproofing both interior and exterior below- or above-ground masonry and concrete. Apply in a minimum of 2 layers of 1.5 mm each.

**Packaging** 25 kg

**Consumption** 3 kg /m<sup>2</sup>



# Concrete repair

FOR A LONG-LASTING AND ROBUST RESTORATION

---

## RC 730 BETONREP

Thixotropic, fiber-reinforced, and shrinkage-resistant 1-component repair mortar based on a hydraulic binder, special fillers, fibers, and additives. The mortar has a light grey color after hardening and possesses high mechanical resistance.

Class R3 according to EN 1504-3.

**Packaging** 25 kg

**Consumption** 2 kg /dm<sup>3</sup>



---

## 1001 LANKOMUR PARENDUIT

Film-forming smoothing layer to correct imperfections and conceal blisters on concrete walls. Paste to be mixed with cement, lime, or gypsum. For interior and exterior walls in a cement mixture: 0.3 to 4 mm.

**Packaging** 15 kg

**Consumption** 0,6 - 0,8 kg /m<sup>2</sup>



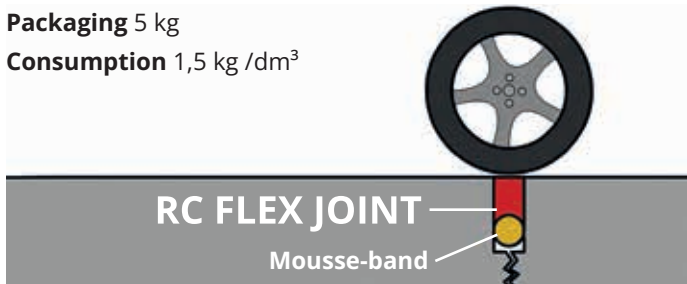
---

## RC FLEX JOINT

A three-component pourable and flexible joint filler for grouting construction and saw cuts in floors. The product provides a hard but flexible joint with a 25% elongation to prevent chipping of the saw cuts. Additionally, RC FLEX JOINT offers high abrasion resistance and good resistance to chemicals.

**Packaging** 5 kg

**Consumption** 1,5 kg /dm<sup>3</sup>



---

## RC INJECT

Two-component epoxy resin consisting of an epoxy resin (component A) and a hardener (component B) for injecting cracks in concrete and wood.

To be used with a manual injection pump and injection nozzle.

**Packaging** 1 kg - 5 kg



---

## RC 854 - EPOXYPLAMUUR

A thixotropic, two-component repair filler based on a combination of epoxy resins with refined quartz fillers for smoothing cracks and pits and finishing concrete, mortar, or stone surfaces.

RC 854 has very strong adhesion to most substrates.

**Packaging** 2,5 kg



---

## RC MG

Two-component epoxy casting resin, composed of a modified amine resin with chemically inert fillers. Solvent-free. After mixing, it forms a casting mass that can be used for various applications.

**Packaging** 10 kg

**Consumption** 2 kg /dm<sup>3</sup>



---

## RC EM 107

2-component epoxy mortar for repairing horizontal surfaces and for installing new trowel mortar floors, even where very high mechanical and chemical requirements are demanded of the floor, such as in dairy barns or farrowing pens, slaughterhouses...

**Packaging** 25 kg

**Consumption** 2,2 kg /dm<sup>3</sup>



# Concrete treatment

## TREATMENT OF OLD AND NEW CONCRETE FLOORS

When constructing concrete structures, proper protection and curing are crucial to protect the concrete from drying out during the first 28 days; this can be achieved by leaving the formwork in place or by using curing compounds.

### RC 111 - CURING

Clear curing compound for fresh concrete. Forms a vapor-tight membrane on the surface and protects against drying out and cracking. Highly suitable for parking lots, industrial floors, road concrete, canals, floor slabs, mortar beds...

**Packaging** 25 L - 200 L - 1000 L

**Consumption** 0,1 - 0,12 L /m<sup>2</sup>

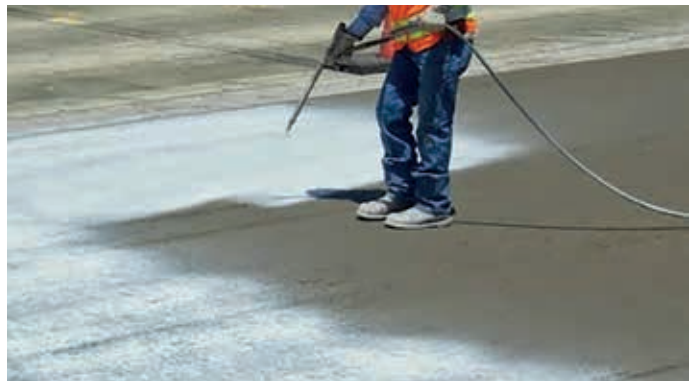


### RC 114 - CURING

Solvent-free curing compound based on wax for fresh concrete surfaces. The product is ready to use for both indoor and outdoor applications and solvent-free, ensuring no environmental impact or exposure for the user.

**Packaging** 25 L - 200 L - 1000 L

**Consumption** 0,1 - 0,15 L /m<sup>2</sup>



### RC M040

A sodium silicate-based product for hardening old and new concrete surfaces. The product combines a curing compound, hardener and densifier. Thanks to its unique chemical process, the top layer becomes up to 30% harder, denser and dust-free.

RC M040 impregnates concrete, preventing flaking or wear. Afterwards, the concrete floor is easier to maintain.

**Packaging** 25 L - 1000 L

**Consumption** 5 - 6 m<sup>2</sup> /L



---

## RC M050-LIT

Water-based lithium silicate for hardening and dust-proofing polished concrete surfaces. Suitable for both indoor and outdoor use. Prevents dust formation and improves the appearance of concrete floors.

**Packaging** 10 L - 25 L

**Consumption** 5 - 10 m<sup>2</sup> /L



---

## RC M060+

Colourless, UV-resistant and vapour-permeable oil repellent for indoor and outdoor use. The product protects concrete floors against oil- and water-based stains, moisture, chlorides, carbonation, damage caused by freeze-thaw cycles... and does not form a film. Complies with standard EN 1504-2, Class I

**Packaging** 10 L - 25 L

**Consumption** 15 - 30 m<sup>2</sup> /L



---

## RC CONCRETE CLEAN+

Super-concentrated cleaning and maintenance product with extra nano effect, specifically developed for hardened and polished concrete floors. With every cleaning, it improves the maintenance and quality of the concrete.

**Packaging** 5 L - 10 L

**Consumption** 8 - 10 ml /L maintenance - 32 - 40 ml /L deep cleaning



# Lime screed

FOR A HEALTHY AND COMFORTABLE INDOOR ENVIRONMENT

## RC CALCIFIX

High-quality binder based on natural hydraulic lime (NHL), developed for durable and high-performance screed mortars. By combining traditional techniques with modern strength requirements, the result is a screed with high compressive and flexural strength, excellent wear resistance and a breathable nature that contributes to a healthy and comfortable indoor climate.



**Packaging** 1000 kg (bigbags)

**Consumption** 250 kg /m<sup>3</sup> screed

✓ **Lower CO<sub>2</sub> emissions**

during production and extraction than cement.

✓ **Excellent compressive and flexural strength**

for demanding applications.

✓ **Less odour nuisance** during processing and installation.

✓ **High vapour permeability**

for a healthy and breathable indoor climate.

✓ **Less susceptible to moisture and salt,**  
which increases the service life of structures.

✓ **Less prone to shrinkage** due to slower curing.

## TEST RESULTS *Buildwise test report DE-BE-0180 / DE-SW-0037 (2024) + SGS Intron 243503*

NBN EN 13892-2	RC CALCIFIX + Recycled aggregates 0/4	RC CALCIFIX + Rhine sand 0/4	Ref. CEM II + Rhine sand 0/4
Compressive strength at 28 days	8,7 N/mm <sup>2</sup>	7,3 N/mm <sup>2</sup>	8,3 N/mm <sup>2</sup>
Compressive strength at 90 days	12,9 N/mm <sup>2</sup>	10,9 N/mm <sup>2</sup>	/
Flexural strength at 28 days	2,3 N/mm <sup>2</sup>	1,5 N/mm <sup>2</sup>	2,3 N/mm <sup>2</sup>
Flexural strength at 90 days	3,5 N/mm <sup>2</sup>	2,4 N/mm <sup>2</sup>	/

*\*Further test results are available on request.*



# Floor systems

## SCREED SYSTEMS, SELF-LEVELLING FLOORS AND FLOOR COATING SYSTEMS

Both new and older industrial floors can be finished with an epoxy coating; any unevenness in the floor is addressed using a self-levelling mortar or epoxy floor.

### RC 845 - EPOXY PRIMER

2-component epoxy primer for all Reynchemie epoxy and polyurethane systems, and as a binder for scraping layers.

**Packaging** 4 kg

**Consumption** 0,3 - 0,5 kg /m<sup>2</sup> /layer



### RC 660 - EPOXY PAINT

Epoxy coating with excellent adhesion and mechanical properties, suitable for application on concrete, mortar, fiber cement, brick, etc.

Available in RAL colours upon request.

**Packaging** 6 kg - 12 kg

**Consumption** 0.15 kg /m<sup>2</sup> /layer



### RC FL-FLOOR - EPOXY FLOOR 1-2MM

High-quality 2-component self-levelling leveling coating. Excellent for renewing existing epoxy systems.

Available in RAL colours upon request.

**Packaging** 25 kg

**Consumption** 1,7 kg /m<sup>2</sup> /mm



### RC SL - EPOXY FLOOR 2-3MM

Three-component epoxy casting mortar with excellent self-levelling properties.

**RC SL 4** (pre-mixed hardtop)

**RC SL 5** + scratch-resistant top coat **RC HARDTOP 403W**

Available in RAL colours on request.

**Packaging** 25 kg

**Consumption** 1,7 kg /m<sup>2</sup> /mm



### 143 LANKOSOL

Self-levelling mortar for applying a levelling layer with a thickness between 3 - 50 mm for indoor and outdoor floors. This mortar can remain uncovered or be covered.

**Packaging** 25 kg

**Consumption** 1,4 - 1,6 kg /m<sup>2</sup> /mm



# Various building specialties

---

## RC ACRYPLAST

Concentrated water-based synthetic resin. The product is added directly or diluted to the mixing water for hydraulic mortars or as a bonding layer for various applications. Improves the workability and plasticity of the mortar and increases compressive strength, tensile, and abrasion resistance. Also suitable for use in waterproofing systems.

**Packaging** 5 L - 10 L - 25 L



---

## RC 8 MORTAR GREASE

Air-entraining agent for masonry mortar that introduces a large number of very small, stable air bubbles into the mortar mix, improving workability. The product reduces the frost susceptibility of the hardened mortar.

**Packaging** 10 L



---

## RC 850 - EPOXY ADHESIVE

Structural epoxy adhesive for attaching bonded reinforcements and installing anchor applications on steel, fiberglass, or carbon fiber.

**Packaging** 1 kg



---

## RC UNIVERS

Universal form release agent for concrete. RC Univers is used where a smooth and uniform concrete finish is of paramount importance (smooth arches, architectural concrete...).

**Packaging** 25 L



---

## RC THINNER

Versatile thinner with high solvency for thinning and dissolving polyurethane and epoxy products. Suitable for cleaning equipment.

**Packaging** 5 L - 10 L - 25 L



## RC 390 BLUE

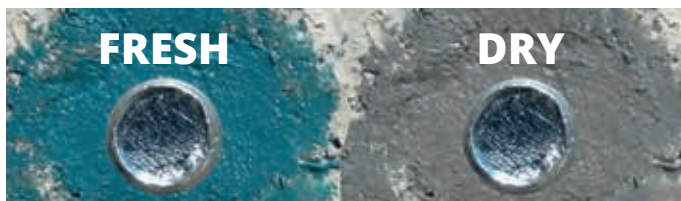
Chemical anchor based on styrene-free vinyl ester for fastening and mounting threaded rods, rebars... in masonry, concrete, or aerated concrete. It allows efficient and secure fixations in more technical construction sites: fixation of metal structures, wooden beam constructions, or realization of elements in reinforced concrete in continuity with existing works.

**ZAG** Test report CE number: 1404-CPR-3385  
ETA-20/0977



Packaging 420 ml

RC 390 Blue is unique in its composition: the resin changes from blue to grey upon curing.



## ACCESSORIES FOR RC 390 BLUE

Manual gun 420 ml



Mixing nozzle



Sieve sleeve  
Ø16 (x85 of x130) - Ø20 (x85)



## ACCESSORIES FOR RC DRYGEL 80

DRYGEL pump & spray nozzle



## ACCESSORIES FOR EPOXY & PU INJECTION

Manual injectie pump



Injection nipples Ø8 & Ø12



Spare injection nipple heads M10



## SALT ANALYSIS STRIPS

Test strips for chlorides, nitrates, and sulfates. 100 per box.



## KARST TUBE

Measuring the water absorption capacity of the substrate before and after the application of a water repellent.





## LIME, EXCELLENCE FOR LIFE

The family-owned company Saint-Astier® was founded in 1912 and is today the largest independent French producer of natural hydraulic lime. The unique composition of the limestone from Saint-Astier® allows for the production of a natural lime that has the ability to harden underwater and carbonate upon contact with air, without mixing or selection. These hydraulic and aerial properties make it a lime with exceptional mineralogical properties, unchanged since the first quarrying, and unique in Europe. With a team of approximately 140 men and women, Saint-Astier® produces and distributes natural hydraulic lime, formulated lime, and technical mortars for heritage restoration, renovation, new construction, and eco-homes.

Since 2003,

Reynchemie has been the exclusive distributor in the Benelux region of Saint-Astier®'s lime products.

---

### TÉRÉCHAUX NHL 2

Snow-white pure natural hydraulic lime (EN 459-1) for mortar and plaster works.

Packaging 25 kg



---

### CHAUX BLANCHE LC\*\*\*\* NHL 3.5

White pure natural hydraulic lime (EN 459-1) for mortar, masonry, and plaster works.

Packaging 25 kg

Also available in:

- 1,000 kg big bags
- bulk (25 tonnes)



---

### CHAUX PURE TRADI 100 NHL 5

Light grey pure natural hydraulic lime (EN 459-1) for lime concrete, mortar, and plaster works requiring higher compressive strength.

Packaging 25 kg

Also available in:

- 1,000 kg big bags
- bulk (25 tonnes)



---

## CHAUSABLE



Highly durable base coat for historic buildings.

**Packaging** 25 kg

---

## ECOMORTAR R100



Flexible undercoat for indoor and outdoor use

**Packaging** 20 kg

---

## ECOMORTAR FINISH EF



Finishing render for indoor and outdoor use

**Packaging** 25 kg



---

## RPC



Traditional render for creating decorative mouldings, cornices and rosettes.

**Packaging** 30 kg

---

## ST.ONE



Repair mortar for natural stone and brick

**Packaging** 25 kg



---

## COULINEX LIANT



Injection mortar for historic buildings

**Packaging** 25 kg

---

## ISOCANNA



Hemp fiber for insulation mortars.

**Packaging** 200 L / 20 kg

---

## BATICHANVRE PLUS



Specially formulated for mixing mortars and concrete with hemp.

**Packaging** 25 kg

---

## KALAMUA



Interior and exterior render on hemp blocks or hemp concrete.

**Packaging** 25 kg



---

## NOVASKIN THERMO PLUS



Lightweight thermal and acoustic insulation render

**Packaging** 12 kg

---

## NOVASKIN COATING



Ultra-fine finishing render for interior and exterior use

**Packaging** 25 kg



---

## SANIMUR



Remedial render for masonry affected by damp and salt

**Packaging** 25 kg

---

## KOLAO COLLE



Ready-to-use tile adhesive

**Packaging** 25 kg

---

## KOLAO JOINT



Ready-to-use grout for tiles

**Packaging** 25 kg

---

## DECORCHAUX CL90-S



White air lime for plastering

**Packaging** 25 kg



**YOU CAN FIND MORE PRODUCTS FROM SAINT-ASTIER®**  
on [reynchemie.com](http://reynchemie.com)

# Brantho-Korrux

## INDUSTRIAL PAINT WITH UNIQUE PROPERTIES

Environmentally friendly: lead- and chromate-free, xylene- and aromatic-free, low VOC content.  
User-friendly 1-component system: no pot life when in use.  
Very high resistance to oils and chemicals.



### BRANTHO-KORRUX 3-IN-1

- ✓ Silk gloss primer and topcoat
- ✓ Universally applicable on, among others, (galvanized) steel, zinc, aluminum, stainless steel, non-ferrous metals, PVC, and polyester
- ✓ Very high resistance to oils and chemicals
- ✓ Processing temperature from -10°C to +20°C
- ✓ Heat resistant (120°C - 300°C)
- ✓ Penetrates into remaining rust (St.2) and prevents under-rusting
- ✓ Repaintable after 30 minutes



**Theoretical Consumption** 8,8 m<sup>2</sup> / L by 60 µm dry  
**Packaging** 750 ML - 5 L

### BRANTHO-KORRUX NITROFEST

- ✓ Matte primer
- ✓ Universally applicable on, among others, (galvanized) steel, zinc, aluminum, stainless steel, non-ferrous metals, PVC, and polyester
- ✓ For corrosion protection of metal and steel
- ✓ Processing temperature from -10°C to +30°C
- ✓ Heat resistant up to +200°C - RAL 3009 up to +300°C
- ✓ Quick-drying:  
Dust-dry after 10 minutes,  
Through-dried after 24 hours



**Theoretical Consumption** 8,2 m<sup>2</sup> / L by 60 µm dry  
**Packaging** 750 ML - 5 L

### HARDENER

Drying accelerator and curing accelerator for solvent-based single-component Brantho-Korrux coatings.

**Packaging** 500 ML



### KOMBI-THINNER

A thinner for paints and coatings that accelerates drying, specifically designed for spray equipment.

**Packaging** 750 ML - 5 L



### Test reports

- ✓ Maritime signs (WSV/RWS approval)
- ✓ German approval for food and toys
- ✓ EU guidelines 2007 (maximum VOC content)
- ✓ Approved by Statoil (Norway) for offshore oil platforms

- ✓ Daimler Chrysler approval
- ✓ TÜV-tested
- ✓ DB-tested (German Railways)
- ✓ VOB/DIN 18363 compliance



YOU CAN FIND MORE PRODUCTS FROM BRANTH-CHEMIE  
on [reynchemie.com](http://reynchemie.com)

# Reynchemie projects





Industrieweg 25  
B-8800 Roeselare  
Tel. +32 (0)51/ 24 25 27  
[reynchemie@reynchemie.com](mailto:reynchemie@reynchemie.com)  
[www.reynchemie.com](http://www.reynchemie.com)