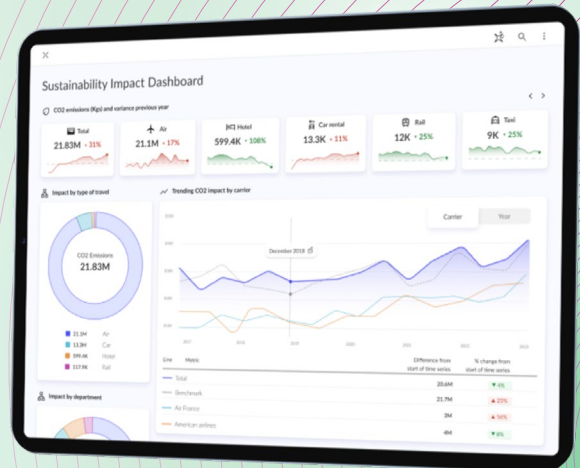


Elevating Your Sustainability Program

For forward-thinking, future-oriented Travel & Expense Professionals



Gain the auditable precision, compliance, and strategic foresight necessary for your sustainability program to excel in today's world, and tomorrow's.

What is PredictX x SQUAKE and How It Helps

PredictX and SQUAKE's strategic partnership creates an integrated platform to tackle urgent sustainability challenges in corporate travel. It combines PredictX's **agentic AI** for travel analytics with SQUAKE's carbon reporting tools to transform fragmented data into a single, reliable source of truth. The solution helps companies achieve corporate sustainability goals, streamline T&E reporting, and ensure ESG compliance.

Transformative Results That Set You Ahead

- » **Unquestionable Accuracy & Efficiency:**
The solution moves your organization from approximation to **auditable precision**, ensuring emissions data is verifiable for any review.
- » **Accelerated Net-Zero Planning:**
Use our predictive tools and dashboards to track progress against **net-zero targets** and develop proactive strategies that drive lasting behavioral change.

Unmatched Value Drivers

- » **Proactive Insights:**
A unified view of your travel program for key strategies.
- » **Empowered Decision-Making:**
Certified data empowers travel managers and finance leaders.
- » **Behavioral Change:**
Assign financial costs to carbon output to influence travel decisions.

Core Capabilities



Granular, Real-Time CO₂ Tracking:
Gain unparalleled insights into emissions across all travel activities (air, rail, car rental, hotel, ground transport), broken down by traveler, business unit, destination, and more.



Audit-Ready Data Accuracy:
We deliver certified, **auditable CO₂ emission calculations** aligned with frameworks like the **GHG Protocol** and **CSRD**.



Seamless Data Consolidation:
Our platform consolidates data from over 200 sources into a unified stream for a holistic view of your entire carbon footprint.



Request a trial today: predictx.com/solutions/corporate-travel-sustainability
Questions? Contact us at: sales@predictx.com



Copyright © 2025 PredictX Ltd. PredictX® is the trading name of PI Limited.

Transform your ESG strategy with PredictX x SQUAKE — verifiable data, smarter decisions, and a real path to net-zero.

Use Cases at a Glance

- » **Sustainability Manager & ESG Teams:**
Proactively manages **carbon hotspots** and develops powerful strategies to reduce your company's carbon footprint.
- » **Business Travel Manager:**
Refines travel policies and collaborates with department heads to address high-carbon activities without compromising business outcomes.
- » **Quantitative & Climate Risk Analyst:**
Seamlessly integrates emissions data into financial and risk models to assess carbon pricing and track progress toward net-zero targets.
- » **Compliance Officer:**
Utilizes auditable, **consolidated data** to ensure the organization meets stringent **ESG compliance** and regulatory requirements.



Today's travel and sustainability managers need more than just numbers, they need insight they can trust. This partnership means our clients can rely on a native solution, purpose-built to meet sustainability reporting requirements, without compromising on accuracy or auditability.

Keesup Choe, CEO, PredictX



Integrating with the technology and innovation leader in travel and expense data analytics is a natural step. Together, we're raising the bar for what enterprise clients can expect from sustainability tools, transforming data into meaningful action.

Philipp von Lamezan, CEO & Co-founder, SQUAKE



Request a trial today: predictx.com/solutions/corporate-travel-sustainability
Questions? Contact us at: sales@predictx.com



Copyright © 2025 PredictX Ltd. PredictX® is the trading name of PI Limited.