

ATSL...LV / ATSC...LV



KEY FEATURES

- Compatible with aluminium and copper cables
- Reduces inventory requirements
- Installs with standard socket or wrench, no crimping tools required
- Solid palm and centre connector with anti-oxidising paste to block moisture
- Grooved inner barrel enhances shear bolt action for reliable electrical connectivity
- Once sheared, bolts stay locked permanently
- Complies to IEC 61238-1 class A and B, BS EN 50483-6 2009

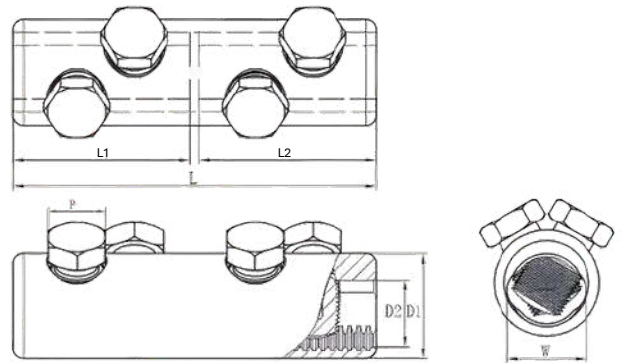
ATSL...LV and ATSC...LV are mechanical torque shear lugs and connectors engineered for low-voltage applications. Featuring an aluminium electro-tin-plated body with aluminium shear bolts, accommodates conductor sizes from 1.5 mm² to 240 mm². Suitable for indoor and outdoor use, all palm holes are designed to fit M12 bolts.



ATST1

CONNECTORS

Product	Conductor Size (mm ²)	No. of Bolts	Dimensions (mm)					
			L1	L2	D1	D2	W	P
ATSC1.5/16B2LV	1.5 - 16	2	30.5	14	12	6		8
ATSC6/25/B2LV	6 - 25	2	40	16	16	9		8
ATSC6/50B2LV	6 - 50	2	37.5	16	18	10	12	10
ATSC16/95B2LV	16 - 95	2	55	24	25	14	16	13
ATSC25/150B2LV	25 - 150	2	70	30	28	17	21	17
ATSC50/240B4LV	50 - 240	4	120	56	35	22	26	19
ATSC120/300B4LV	120 - 300	4	140	68.3	38	24	29	22
ATSC185/400B6LV	185 - 400	6	160	78.3	42	26	32	22



LUGS

Product	Conductor Size (mm ²)	No. of Bolts	Dimensions (mm)								
			L1	L	D1	D2	T	P	B	E	W
ATSL6/25/12/1LV	6 - 25	1	19	40	15.5	9	6	8	24	2	
ATSL6/50/12/B1LV	6 - 50	1	24	50	19	10	6	10	24	2	12
ATSL16/95/12/B1LV	16 - 95	1	25	52	25	14	8	13	25	2	16
ATSL50/240/12/B2LV	50 - 240	2	56	97	35	22	13	19	35	3	26
ATSL120/300/12/B2LV	120 - 300	2	68.3	105.7	38	24	14	22	38	4	29
ATSL185/400/12/B3LV	185 - 400	3	78.3	119	42	26	16	22	42	4	32

