

NOTES:

1. NO TREES OR FENCES ALLOWED WITHIN THE ROAD R/W OR UTILITY EASEMENT EXCEPT WHERE REQUIRED BY CITY, COUNTY, OR OTHER GOVERNMENT ORDINANCE.
2. ALL TREES SHALL BE CLEARED AND SHOULDERS GRADED WITHIN 6" OF FINAL GRADE (INCLUDING UTILITY EASEMENT) PRIOR TO THE INSTALLATION OF ANY UTILITIES.
3. UTILITY PLACEMENT SHALL REMAIN CONSISTENT FROM BACK OF CURB THROUGHOUT THE PROJECT REGARDLESS OF ANY INCONSISTENCIES IN ROAD CONSTRUCTION. EXAMPLES: STORM SEWERS, CULVERTS, CUL-DE-SACS, ETC...(EXCEPT CATV).
4. TOTAL CLEARED AND GRADED WIDTH TO BE 60'-0" MINIMUM. ELECTRIC, GAS, TELEPHONE, AND CABLE TELEVISION.
5. PROPERTY CORNER REFERENCE SHALL BE PLACED ON CURB AND GUTTER AND ON 10' OFFSET STAKE.
6. UTILITY EASEMENT SHALL BE SHOWN AND RECORDED WITH THE FINAL PLAT.
7. WATER METER BOXES SHALL BE LOCATED AT EDGE OF R/W. SEWER SERVICES SHALL BE STUBBED OUT 17'-0" BACK OF CURB.
8. WATER LATERALS SHALL BE MARKED WITH A BLUE "W" ON CURB. SEWER LATERALS SHALL BE MARKED WITH A GREEN "X" ON CURB.
9. DEPTH REQUIREMENTS INDICATE MINIMUM DEPTH AT TIME OF INSTALLATION BELOW CURB LINE.
10. THIS STANDARD MAY BE COMBINED WITH GOVERNING ROADWAY JURISDICTION UTILITY PLACEMENT STANDARDS.
11. UTILITIES SHALL BE LOCATED WITHIN PLUS/MINUS 6" OF PLAN LOCATION.
12. PROVIDE CLEAN OUT AT R/W LINE FOR EVERY SERVICE.
13. MAINTAIN MINIMUM 18" VERTICAL SEPARATION (WATER LINE ABOVE SEWER LINE) AT ALL CROSSINGS.
14. ALL METER BOXES WITHIN TRAFFIC/DRIVE AREAS SHALL BE RATED FOR H-20 LOAD CAPACITY.



SPALDING COUNTY WATER AUTHORITY

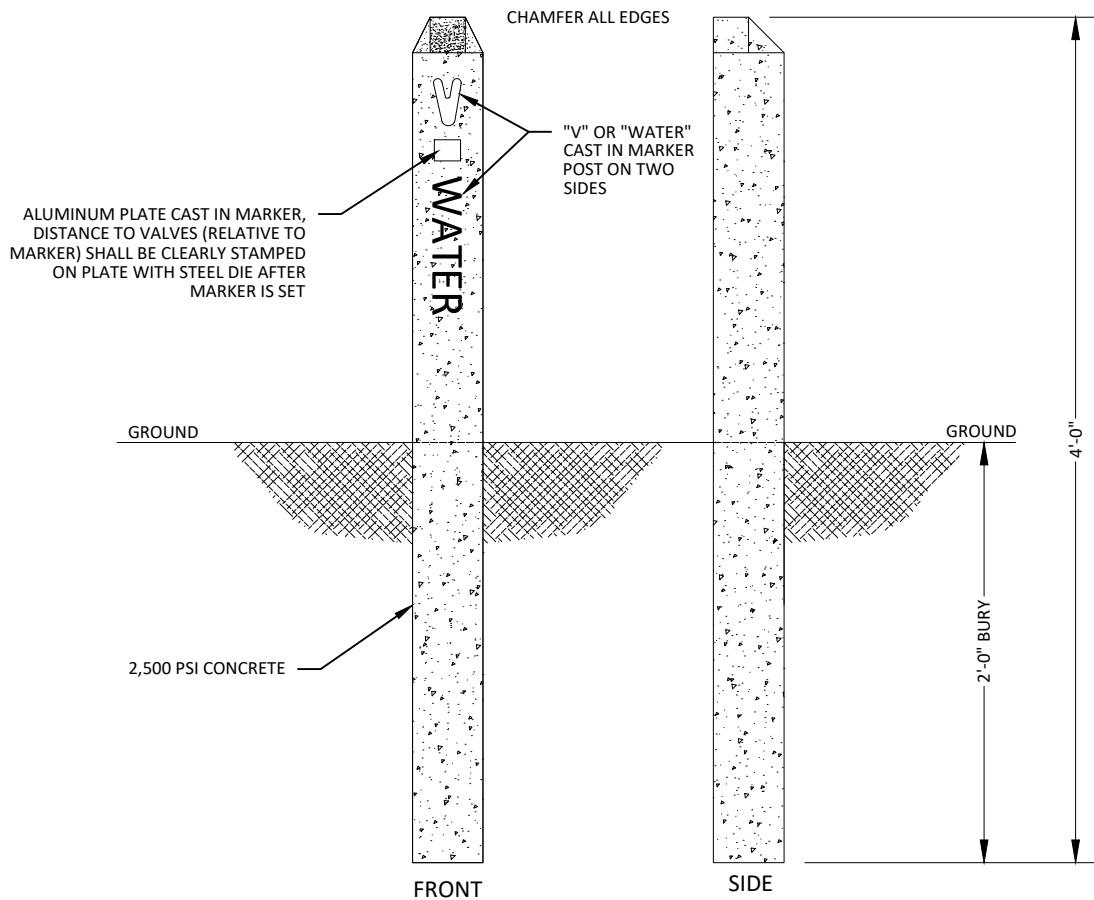
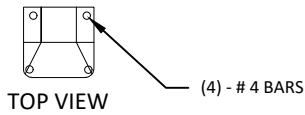
**RESIDENTIAL UTILITY PLACEMENT
FOR ROAD WITH 50' RIGHT-OF-WAY**

SPEC. DATE: 2024

REVISED: N/A

SCALE: N.T.S.

DETAIL NO.
W01



SPALDING COUNTY WATER AUTHORITY

CONCRETE VALVE MARKER

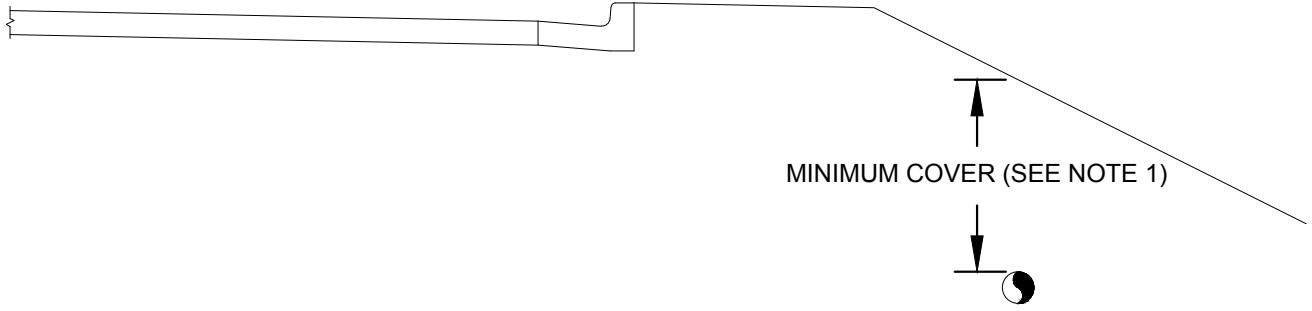
SPEC. DATE: 2024

REVISED: N/A

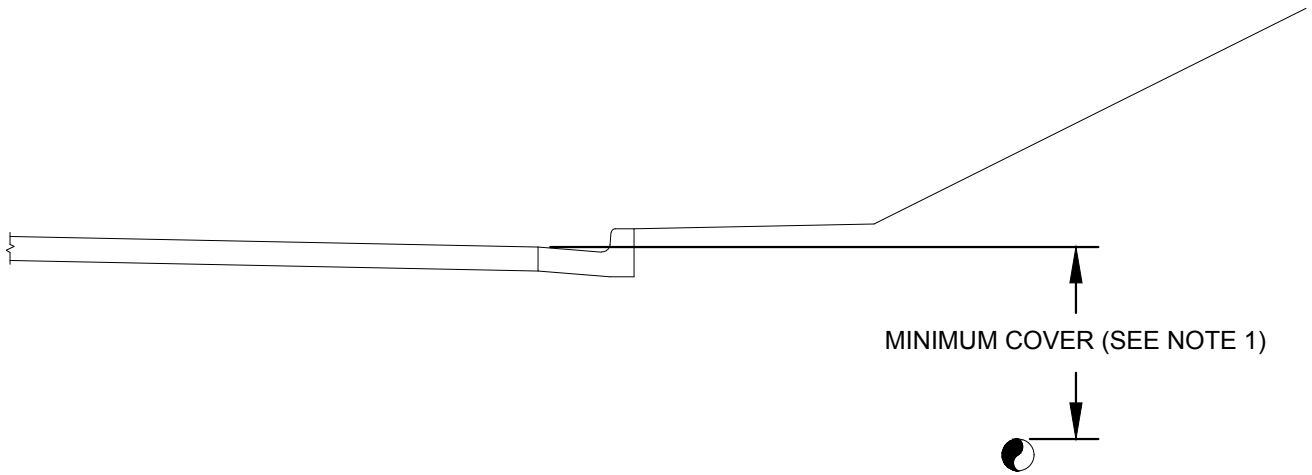
SCALE: N.T.S.

DETAIL NO.

W02



PIPE DEPTH WITH DECLINING GRADE
AT EDGE OF PAVEMENT



PIPE DEPTH WITH INCREASING GRADE
AT EDGE OF PAVEMENT

NOTES:

1. DEPTH OF COVER OVER WATER MAINS LESS THAN 12" DIA SHALL BE MINIMUM 4'-0", FOR WATER MAINS GREATER THAN 12" DIA, MINIMUM COVER SHALL BE 5'-0" UNLESS OTHERWISE APPROVED BY SCWA.



SPALDING COUNTY WATER AUTHORITY

SPEC. DATE: 2024

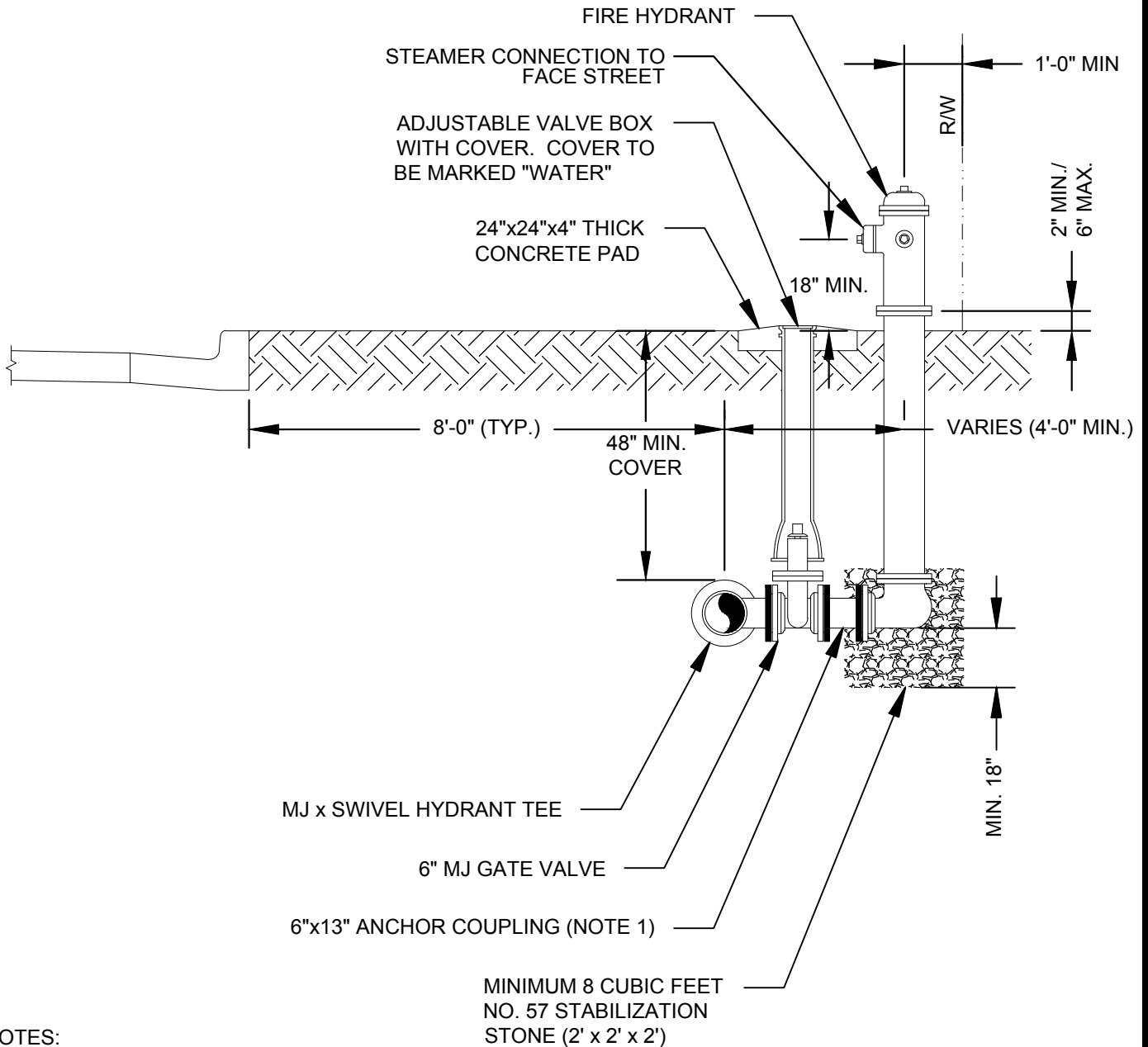
REVISED: N/A

SCALE: N.T.S

**PIPE DEPTH AT
EDGE OF PAVEMENT**

DETAIL NO.

W03



NOTES:

1. LONGER ANCHOR COUPLINGS MAY BE USED WHEN REQUIRED. IF ANCHOR COUPLINGS ARE NOT USED, VALVE SHALL BE RODDED TO THE TEE AND HYDRANT SHALL BE RODDED TO THE VALVE USING A MINIMUM OF TWO (2) 3/4" THREADED RODS ON EACH CONNECTION.
2. FIRE HYDRANT TO BE A 5-1/4" MVO M&H STYLE 129 TRAFFIC MODEL (3-WAY) AS MANUFACTURED BY THE M&H VALVE COMPANY (A DIVISION OF MCWANE INC.) OR SCWSFA APPROVED EQUAL.
3. FIRE HYDRANT COLOR TO BE OSHA SAFETY YELLOW (ACCEPTABLE COLOR CODE - RAL 1023 OR RAL 1003).
4. ALL FITTINGS SHALL BE RESTRAINED WITH MEGA-LUGS.
5. TIE RODS SHALL BE ALLOY STEEL W/MINIMUM TENSILE STRENGTH OF 125,000 PSI. RODS TO BE COATED WITH BITUMINOUS PAINT AFTER INSTALLATION.



SPALDING COUNTY WATER AUTHORITY

TYPICAL FIRE HYDRANT ASSEMBLY

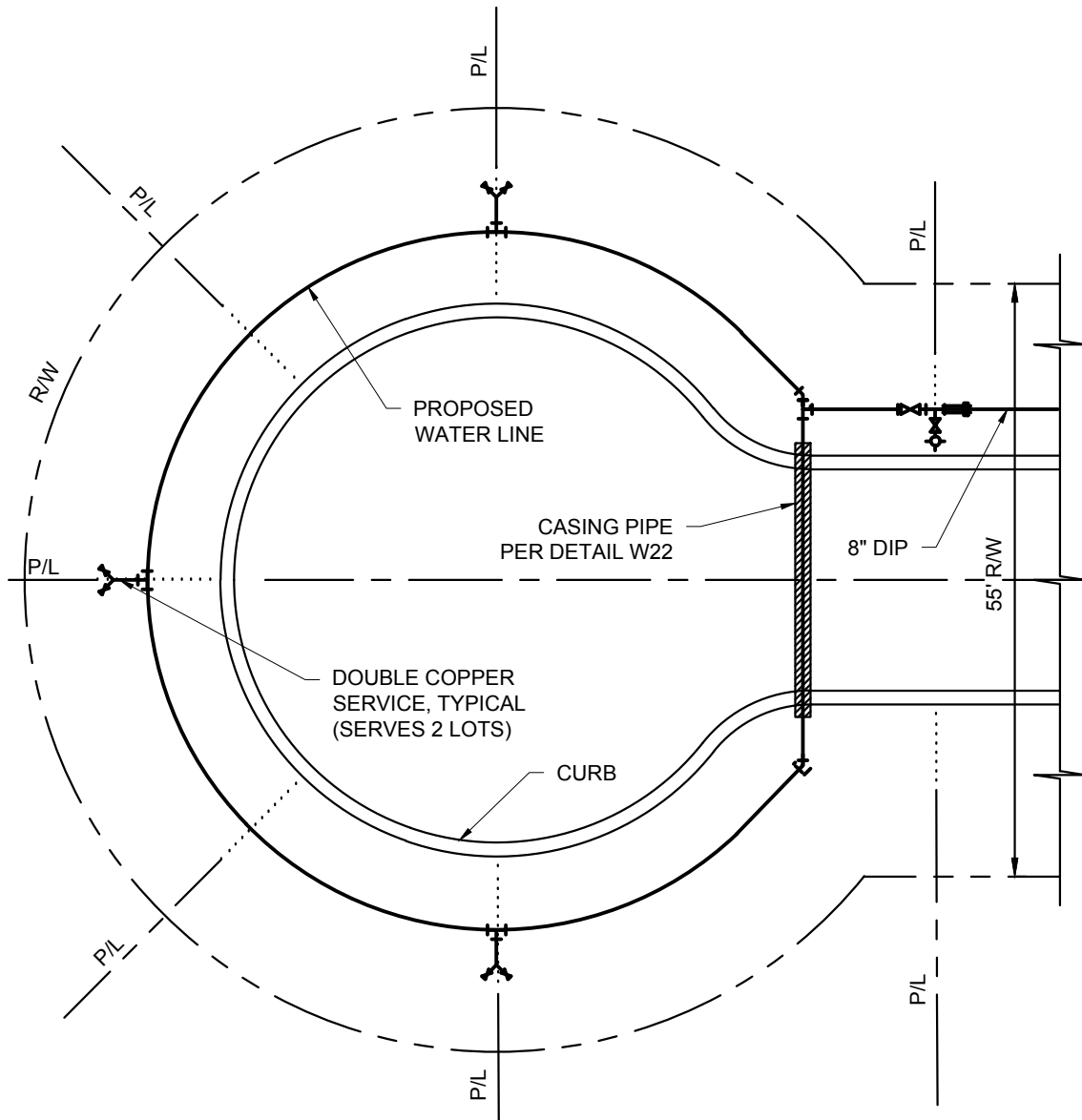
SPEC. DATE: 2026

REVISED: N/A

SCALE: N.T.S.

DETAIL NO.

W04



SPALDING COUNTY WATER AUTHORITY

FIRE HYDRANT IN CUL-DE-SAC

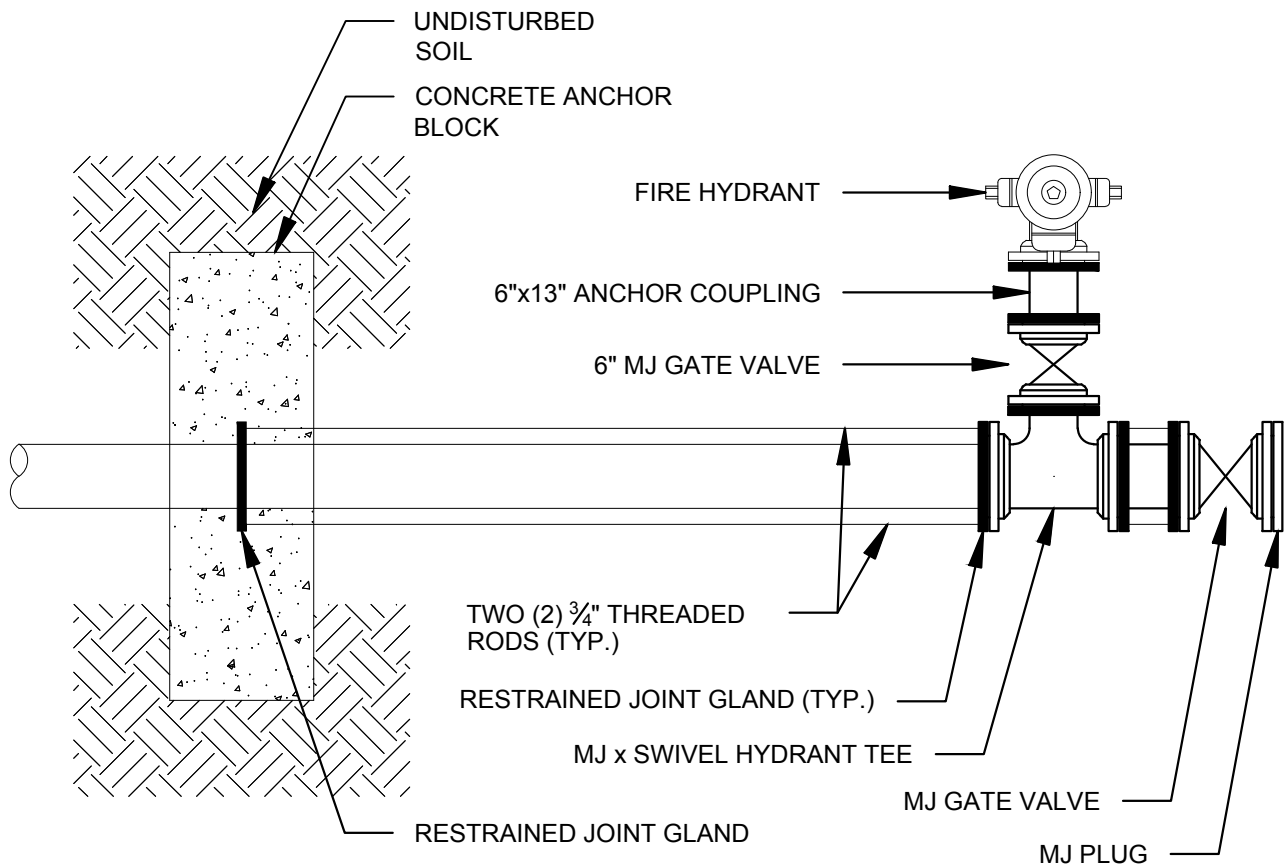
SPEC. DATE: 2026

REVISED: N/A

SCALE: N.T.S.

DETAIL NO.

W05



PLAN VIEW

NOTES:

1. ALL FITTINGS AND VALVES SHALL BE RESTRAINED.
2. FIELD CONDITION MAY REQUIRE ADDITIONAL RESTRAINT AS DIRECTED BY SCWA.
3. THIS DETAIL SHALL BE USED IN CONJUNCTION WITH DETAIL W04.



SPALDING COUNTY WATER AUTHORITY

FIRE HYDRANT AT DEAD END

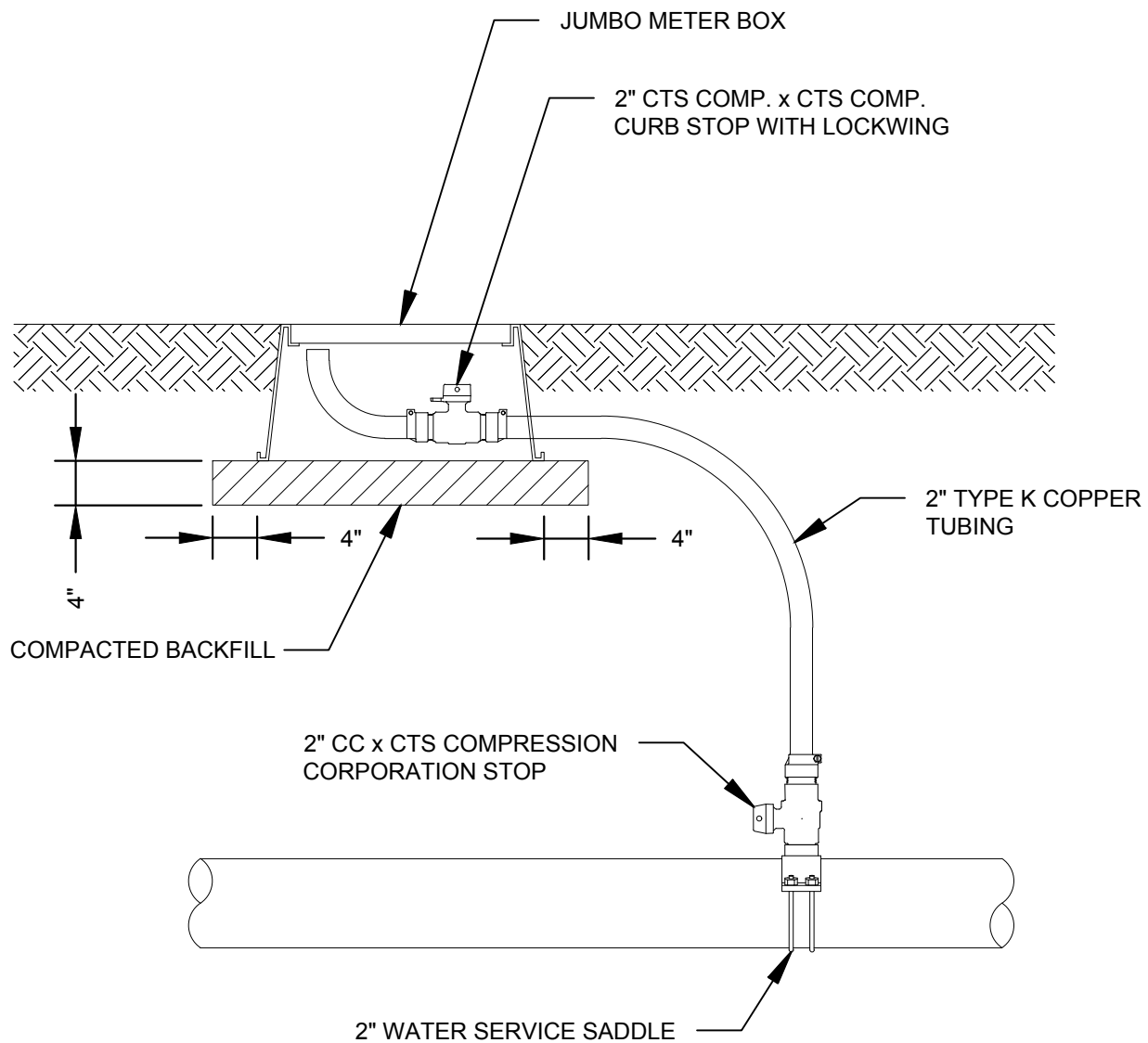
SPEC. DATE: 2024

REVISED: N/A

SCALE: N.T.S.

DETAIL NO.

W06



NOTES:

1. NO GALVANIZED PIPING OR FITTINGS WILL BE ACCEPTED.
2. FINAL BLOW-OFF LOCATIONS TO BE DETERMINED BY A **SCWA** REPRESENTATIVE



SPALDING COUNTY WATER AUTHORITY

WATER LINE BLOW-OFF

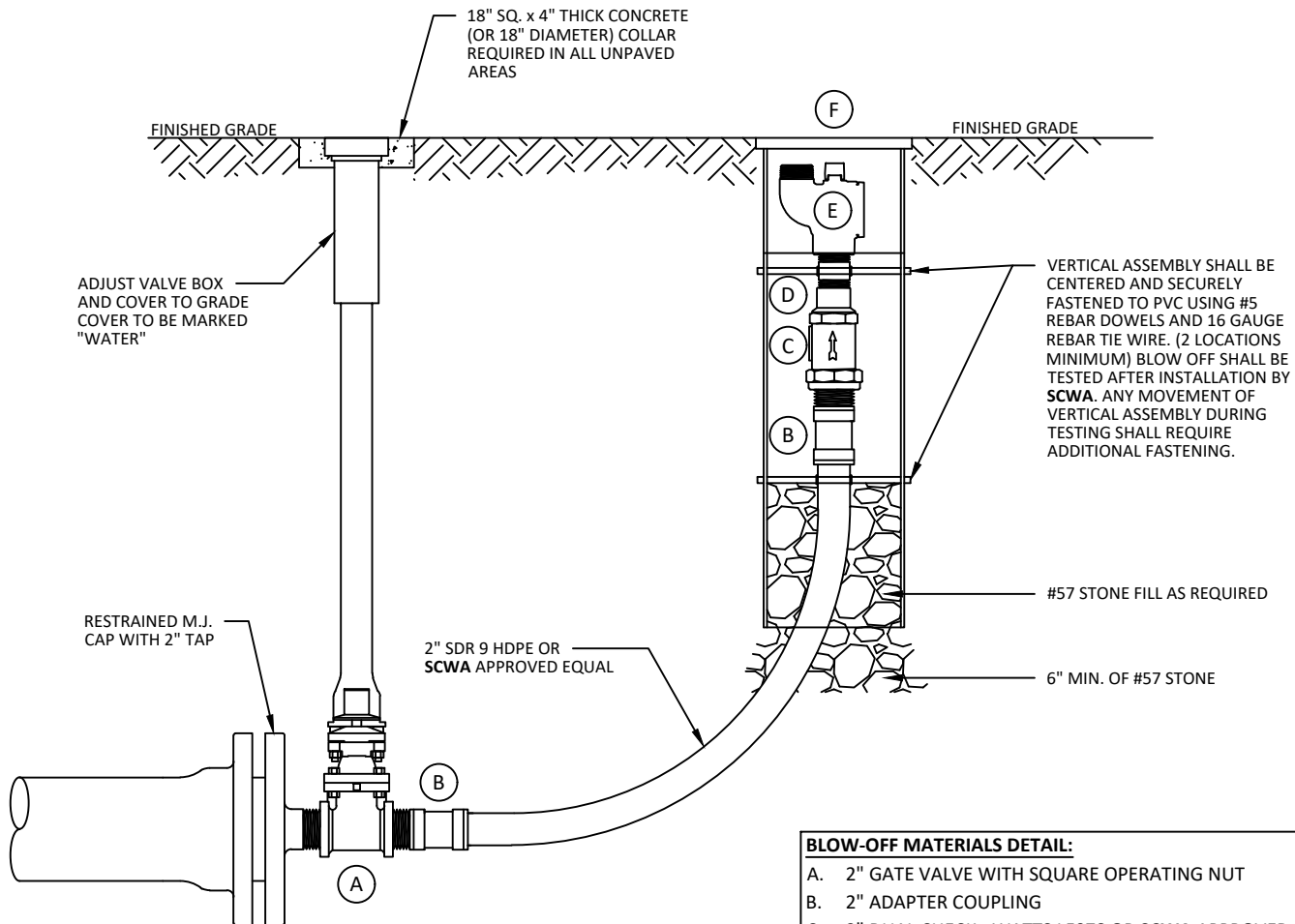
SPEC. DATE: 2024

REVISED: N/A

SCALE: N.T.S.

DETAIL NO.

W07



- NOTES:**
1. NO GALVANIZED PIPING OR FITTINGS WILL BE ACCEPTED.
 2. FINAL BLOW-OFF LOCATIONS TO BE DETERMINED BY A SCWA REPRESENTATIVE.

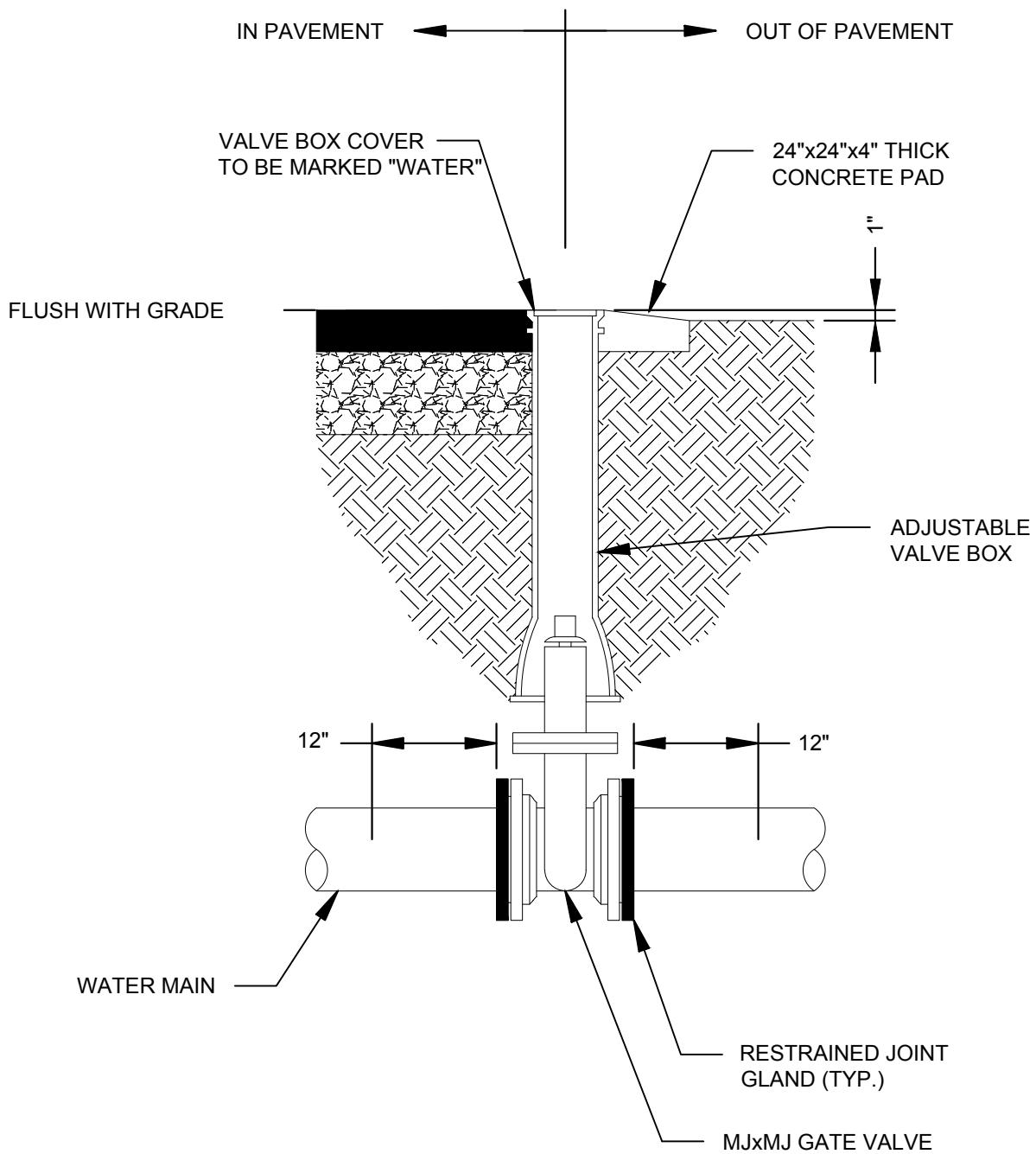
- BLOW-OFF MATERIALS DETAIL:**
- A. 2" GATE VALVE WITH SQUARE OPERATING NUT
 - B. 2" ADAPTER COUPLING
 - C. 2" DUAL CHECK - WATTS LF07S OR SCWA APPROVED EQUAL
 - D. 2" THREADED NIPPLE
 - E. FORD BLOW-OFF BALL VALVE BLA18-777-TA-NL
 - F. MB-9 ROUND METER BOX WITH "WATER VALVE" LID AND 6" SCH 40 PVC VERTICAL SLEEVE TO HOUSE BLOW-OFF ASSEMBLY.



SPALDING COUNTY WATER AUTHORITY

TERMINAL END BLOW-OFF VALVE DETAIL

SPEC. DATE: 2024
REVISED: N/A
SCALE: N.T.S.
DETAIL NO. W08



SPALDING COUNTY WATER AUTHORITY

WATER LINE ISOLATION VALVE

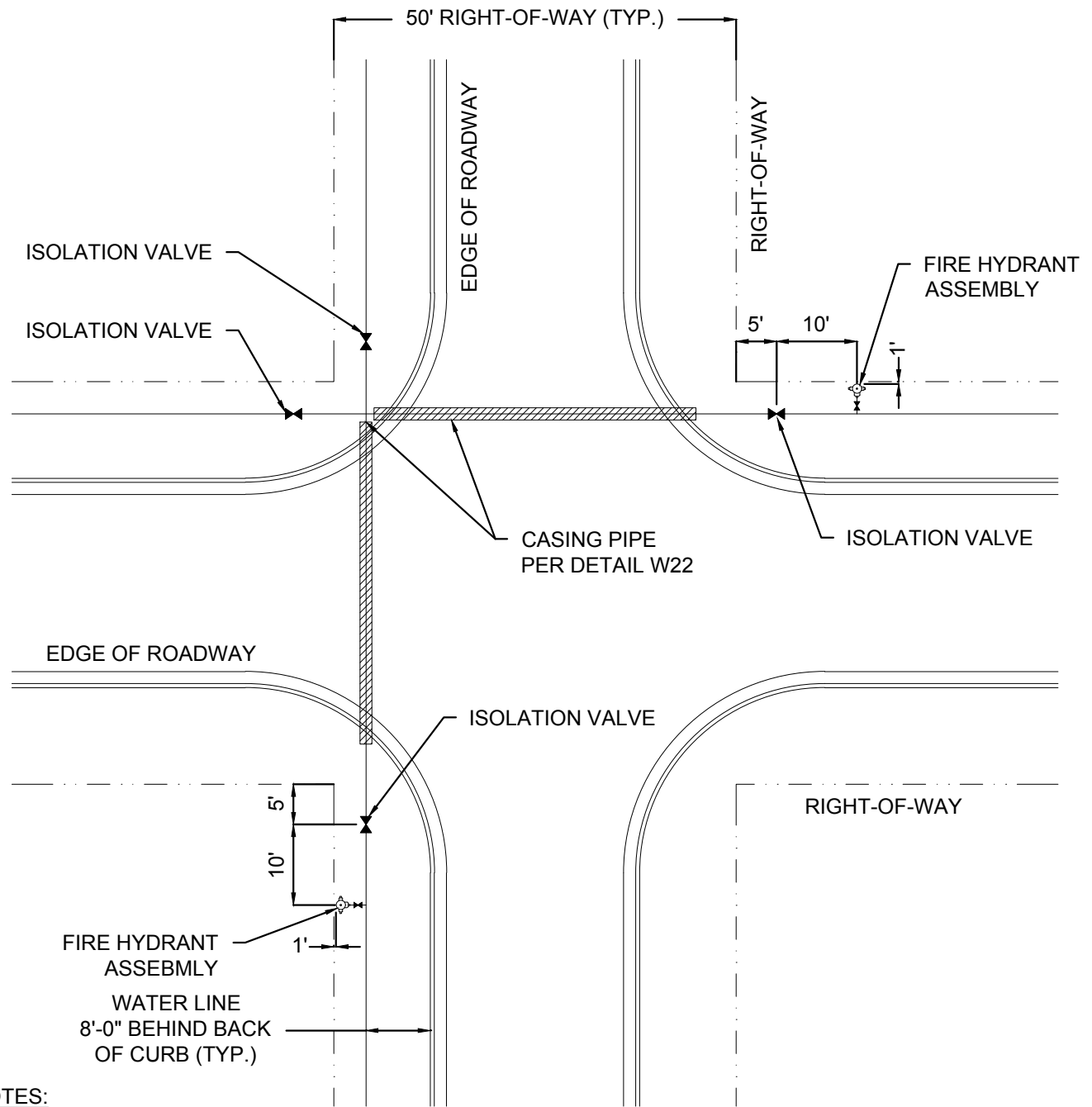
SPEC. DATE: 2024

REVISED: N/A

SCALE: N.T.S.

DETAIL NO.

W09



NOTES:

1. WHERE EXISTING STRUCTURES EXIST AND INTERFERE WITH THE ROUTE OF THE WATER LINE, THE WATER LINE SHALL BE ROUTED AROUND THE STRUCTURE BY PIPE JOINT DEFLECTION OR, WHERE NECESSARY, WITH MAXIMUM 45° BENDS.
2. VALVES AT CROSS CONNECTIONS SHALL BE RODDED TO THE FITTING USING A MINIMUM OF TWO 3/4" THREADED RODS. THE MJ FLANGE ON THE OPPOSITE SIDE OF THE FITTING SHALL BE RESTRAINED USING A MEGALUG.



SPALDING COUNTY WATER AUTHORITY

WATER LINE INTERSECTION

SPEC. DATE: 2026

REVISED: N/A

SCALE: N.T.S.

DETAIL NO.

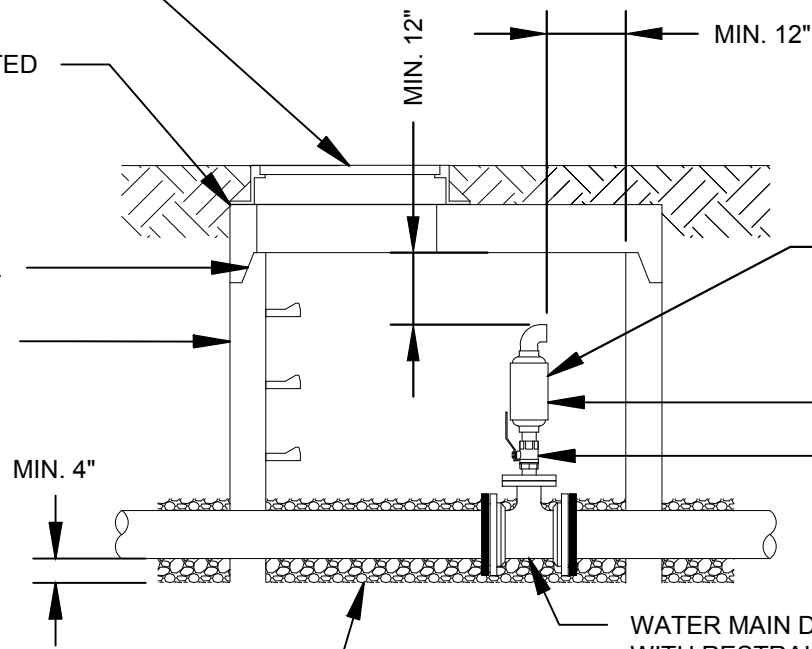
W10

30" MANHOLE FRAME
AND VENTED COVER

60" HS-20 LOAD RATED
PRECAST FLAT TOP

PREFORMED BUTYL
JOINT SEAL

60" PRECAST
MANHOLE SECTION



VALVE PLACEMENT SO AS TO
NOT OBSTRUCT ACCESS
FOR MAINTENANCE

AIR RELEASE VALVE

- (1) MNPT x MNPT TYPE 316 SS NIPPLE
- (1) FNPT x FNPT TYPE 316 SS BALL VALVE
- (1) MNPT x MNPT TYPE 316 SS NIPPLE
- (1) 4" BLIND FLANGE WITH FNPT TAP

WATER MAIN DIA. x 4" MJ x FLG TEE
WITH RESTRAINED JOINT GLANDS

#57 STABILIZATION STONE



SPALDING COUNTY WATER AUTHORITY

WATER MAIN COMBINATION AIR/VACUUM VALVE

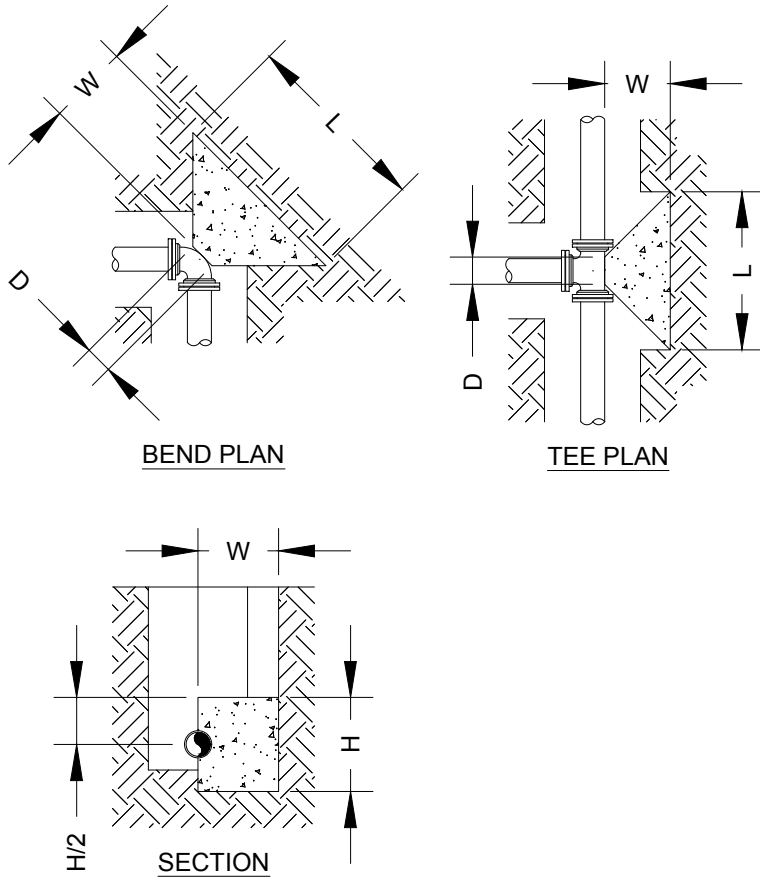
SPEC. DATE: 2024

REVISED: N/A

SCALE: N.T.S.

DETAIL NO.

W11



TEES						
PIPE DIA. (IN)	D DIM.	L DIM.	H DIM.	W DIM.	CONC. VOLUME (YD ³)	THRUST (LBF)
4	0'-6"	2'-4"	1'-2"	0'-11"	0.06	4,072
6	0'-8"	3'-4"	1'-8"	1'-4"	0.16	8,413
8	0'-9"	4'-5"	2'-3"	1'-10"	0.39	14,473
10	0'-11"	5'-5"	2'-9"	2'-3"	0.73	21,773
12	1'-1"	6'-5"	3'-3"	2'-8"	1.20	30,791
90° BENDS						
PIPE DIA. (IN)	D DIM.	L DIM.	H DIM.	W DIM.	CONC. VOLUME (YD ³)	THRUST (LBF)
4	0'-5"	2'-9"	1'-5"	1'-2"	0.10	5,758
6	0'-8"	4'-0"	2'-0"	1'-8"	0.29	11,898
8	0'-9"	5'-3"	2'-8"	2'-3"	0.67	20,468
10	0'-11"	6'-5"	3'-3"	2'-9"	1.21	30,792
12	1'-1"	8'-7"	3'-10"	3'-3"	2.00	43,545
45° BENDS						
PIPE DIA. (IN)	D DIM.	L DIM.	H DIM.	W DIM.	CONC. VOLUME (YD ³)	THRUST (LBF)
4	0'-4"	2'-0"	1'-0"	0'-10"	0.04	3,116
6	0'-7"	2'-11"	1'-6"	1'-2"	0.11	6,439
8	0'-8"	3'-10"	1'-11"	1'-7"	0.25	11,077
10	0'-11"	4'-9"	2'-5"	1'-11"	0.49	16,664
12	1'-1"	6'-7"	2'-10"	2'-3"	0.79	23,566
22½° BENDS						
PIPE DIA. (IN)	D DIM.	L DIM.	H DIM.	W DIM.	CONC. VOLUME (YD ³)	THRUST (LBF)
4	0'-5"	1'-5"	0'-9"	0'-6"	0.01	1,589
6	0'-7"	2'-1"	1'-1"	0'-9"	0.04	3,283
8	0'-9"	2'-9"	1'-5"	1'-0"	0.09	5,647
10	0'-10"	3'-4"	1'-8"	1'-3"	0.16	8,495
12	1'-0"	4'-0"	2'-0"	1'-6"	0.28	12,014

NOTES:

1. THRUST BLOCK DIMENSIONS ARE BASED ON THE FOLLOWING DESIGN CRITERIA.

- WORKING PRESSURE = 150 PSI
- SOIL BEARING CAPACITY = 1,500 PSF
- SAFETY FACTOR = 1.5

THESE ARE THE MINIMUM DESIGN CRITERIA. IF ACTUAL WORKING PRESSURE IS GREATER THAN 150 PSI OR IF ACTUAL SOIL BEARING CAPACITY IS LESS THAN 1,500 PSF, DIMENSIONS SHALL BE RECALCULATED.

- 2. THRUST BLOCK CONCRETE SHALL HAVE A MINIMUM 28 DAY COMPRESSIVE STRENGTH OF 2,500 PSI.
- 3. THRUST BLOCK SHALL BEAR AGAINST UNDISTURBED SOIL.
- 4. A MINIMUM 10 MIL PLASTIC SHEET SHALL BE PLACED BETWEEN CONCRETE AND PIPE.
- 5. ALL BOLTS SHALL REMAIN ACCESSIBLE. DO NOT COVER WITH CONCRETE.



SPALDING COUNTY WATER AUTHORITY

CONCRETE THRUST BLOCK

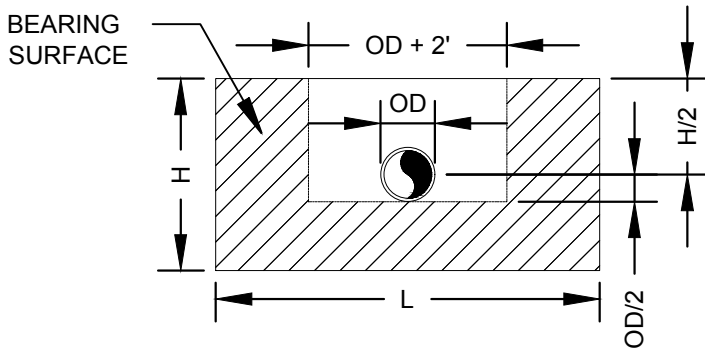
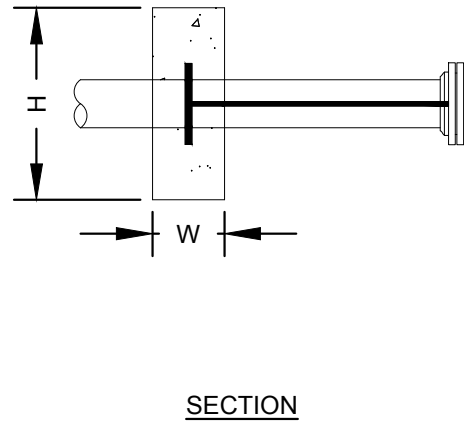
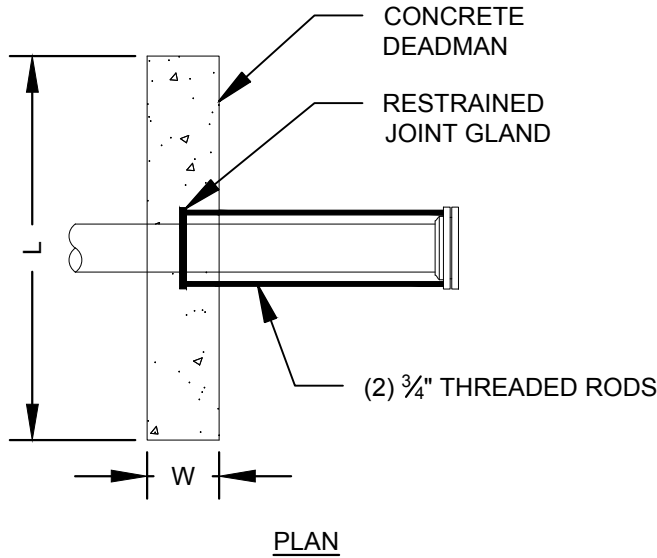
SPEC. DATE: 2024

REVISED: N/A

SCALE: N.T.S.

DETAIL NO.

W12



DEADMAN DIMENSION					
PIPE DIA. (IN)	L DIM.	H DIM.	W DIM.	CONC. VOLUME (YD ³)	THRUST (LBF)
4	3'-0"	1'-7"	1'-0"	0.18	4,072
6	4'-3"	2'-1"	1'-0"	0.33	8,413
8	5'-4"	2'-8"	1'-0"	0.53	14,473
10	6'-0"	3'-6"	1'-0"	0.78	21,773
12	7'-1"	4'-0"	1'-0"	1.05	30,791

NOTES:

1. DEADMAN DIMENSIONS ARE BASED ON THE FOLLOWING DESIGN CRITERIA.

WORKING PRESSURE = 150 PSI
 SOIL BEARING CAPACITY = 1,500 PSF
 SAFETY FACTOR = 1.5

THESE ARE THE MINIMUM DESIGN CRITERIA. IF ACTUAL WORKING PRESSURE IS GREATER THAN 150 PSI OR IF ACTUAL SOIL BEARING CAPACITY IS LESS THAN 1,500 PSF, DIMENSIONS SHALL BE RECALCULATED.

2. DEADMAN CONCRETE SHALL HAVE A MINIMUM 28 DAY COMPRESSIVE STRENGTH OF 2,500 PSI.
3. DEADMAN SHALL BEAR AGAINST UNDISTURBED SOIL.
4. A MINIMUM 10 MIL PLASTIC SHEET SHALL BE PLACED BETWEEN CONCRETE AND PIPE.
5. ALL BOLTS SHALL REMAIN ACCESSIBLE. DO NOT COVER WITH CONCRETE.



SPALDING COUNTY WATER AUTHORITY

CONCRETE DEADMAN

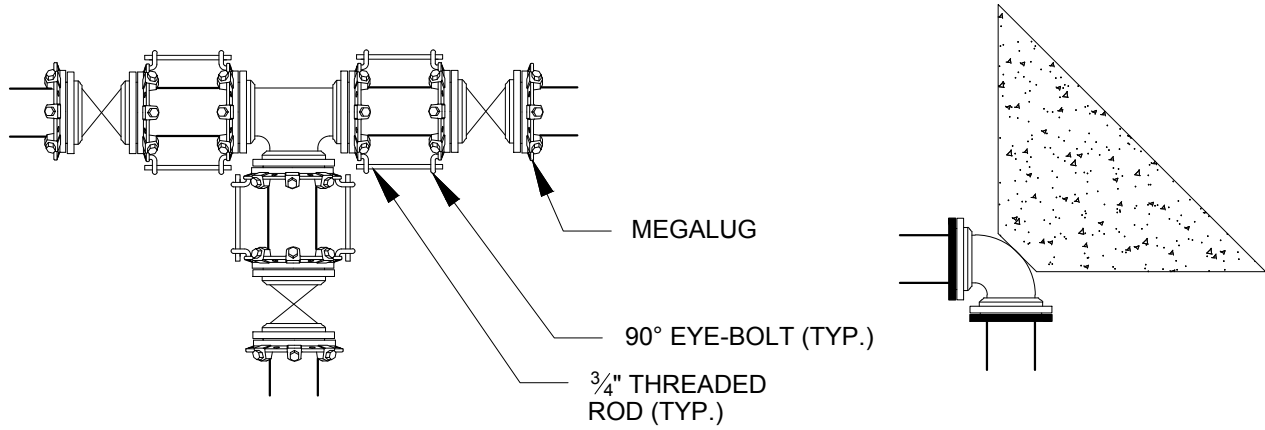
SPEC. DATE: 2024

REVISED: N/A

SCALE: N.T.S.

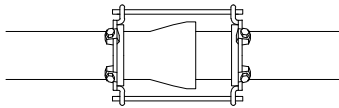
DETAIL NO.

W13

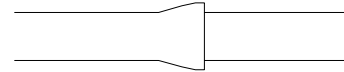


FITTING WITH TIE-RODS AND MEGALUGS

FITTING WITH RESTRAINED JOINT GLAND AND THRUST BLOCK



TIE-RODS FROM RESTRAINED JOINT GLAND TO RESTRAINED JOINT GLAND



PUSH-ON JOINT WITH RESTRAINED JOINT GASKET

PIPE DIA. (IN)	ROD SIZE (IN)	# OF RODS
6	3/4"	2
8	3/4"	4
10	3/4"	4
12	3/4"	4
14	3/4"	4
16	3/4"	6

TIE-ROD CHART

NOTES:

1. RESTRAINED JOINT LENGTHS SHALL BE CALCULATED BY THE DESIGN ENGINEER. CALCULATIONS SHALL BE SUBMITTED TO SCWA.
2. THREADED ROD SHALL HAVE A MINIMUM YIELD STRENGTH OF 50,000 PSI.



SPALDING COUNTY WATER AUTHORITY

THRUST RESTRAINT

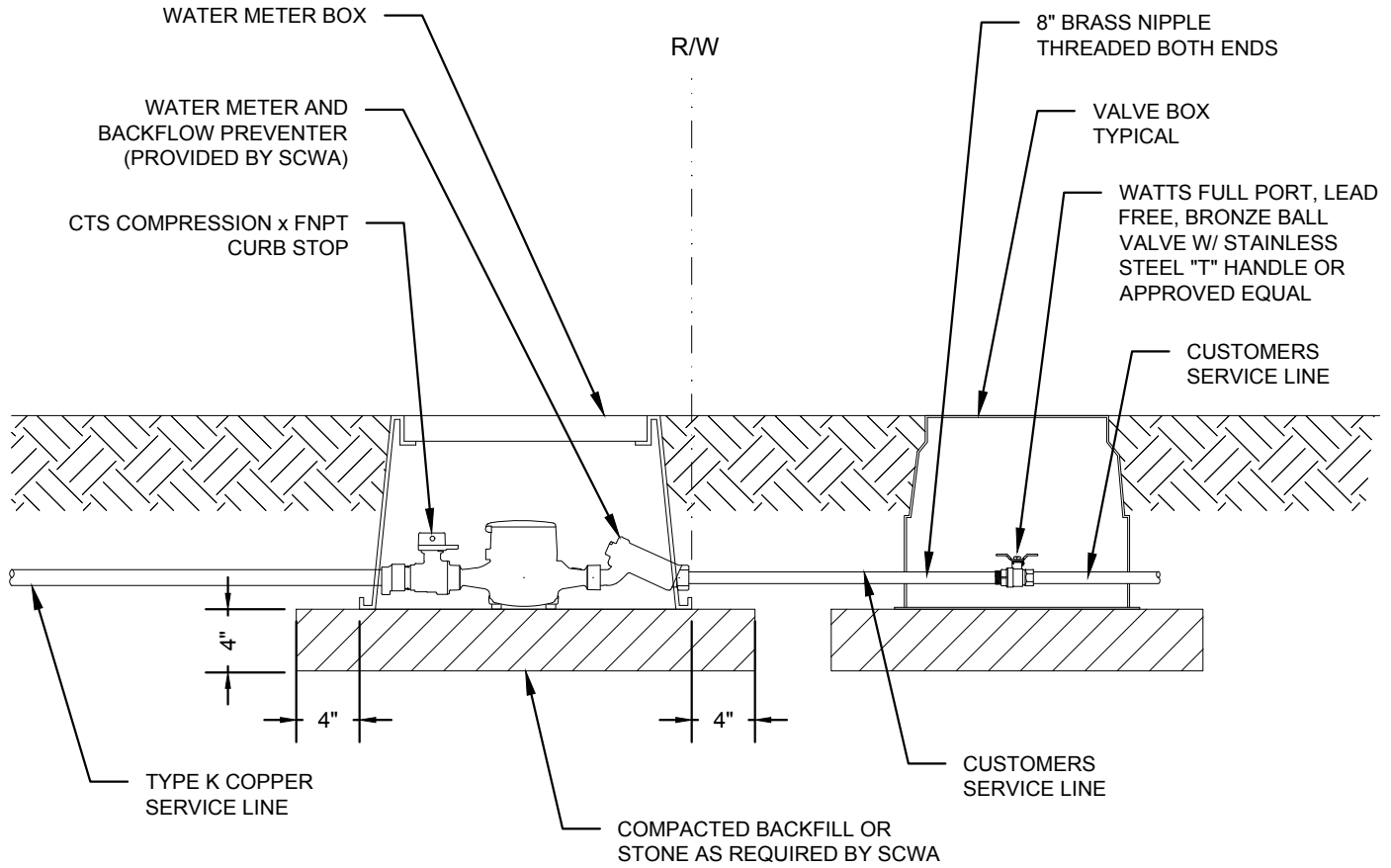
SPEC. DATE: 2024

REVISED: N/A

SCALE: N.T.S.

DETAIL NO.

W14



NOTES:

1. SCWA WILL PROVIDE RESIDENTIAL WATER METERS AND BACKFLOW PREVENTERS. ALL OTHER APPURTENANCES SHALL BE PROVIDED BY THE DEVELOPER AND/OR CONTRACTOR.
2. WATER METER BOX LIDS SHALL HAVE 2-INCH DIAMETER HOLE OFFSET FOR TOUCH READ INSTALLATION.
3. EACH SERVICE SHALL BE MARKED WITH A "W" SAW CUT INTO TOP OF CURB AND PAINTED BLUE.
4. INSERT A 4-FOOT LONG PIECE OF PVC PIPE ADJACENT TO THE METER BOX TO MARK THE METER LOCATION. PAINT PVC PIPE BLUE.
5. THE HOLE IN THE METER BOX LID MUST BE PLUGGED WITH AN ANTENNA PLUG.
5. NO PERMANENT STRUCTURES SHALL BE LOCATED WITHIN 5 FEET OF WATER SERVICE.
6. TYPICAL INSTALLATION MAY BE MODIFIED AT DISCRETION OF SCWA.



SPALDING COUNTY WATER AUTHORITY

**RESIDENTIAL WATER
METER DETAIL**

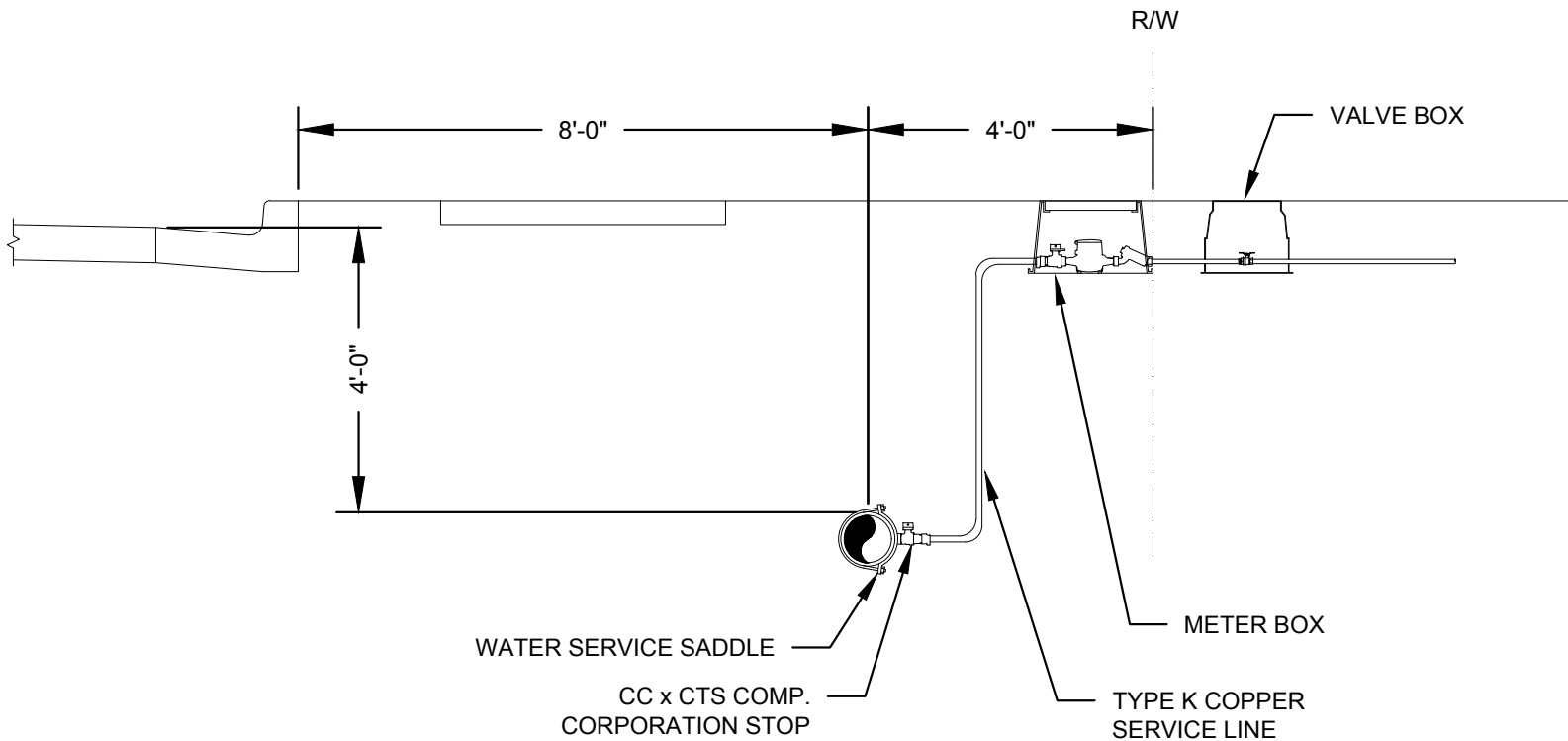
SPEC. DATE: 2024

REVISED: N/A

SCALE: N.T.S.

DETAIL NO.

W15



NOTES:

1. EACH SERVICE SHALL BE MARKED WITH A "W" SAW CUT INTO TOP OF CURB AND PAINTED BLUE.
2. INSERT A 4-FOOT LONG PIECE OF PVC PIPE ADJACENT TO THE METER BOX TO MARK THE METER LOCATION. PAINT PVC PIPE BLUE.
3. THE HOLE IN THE METER BOX LID MUST BE PLUGGED WITH AN ANTENNA PLUG.
4. NO PERMANENT STRUCTURES SHALL BE ALLOWED WITHIN 5 FEET OF WATER SERVICE.
5. TYPICAL INSTALLATION MAY BE MODIFIED AT THE DISCRETION OF SCWA.



SPALDING COUNTY WATER AUTHORITY

SHORT SIDE RESIDENTIAL SERVICE DETAIL

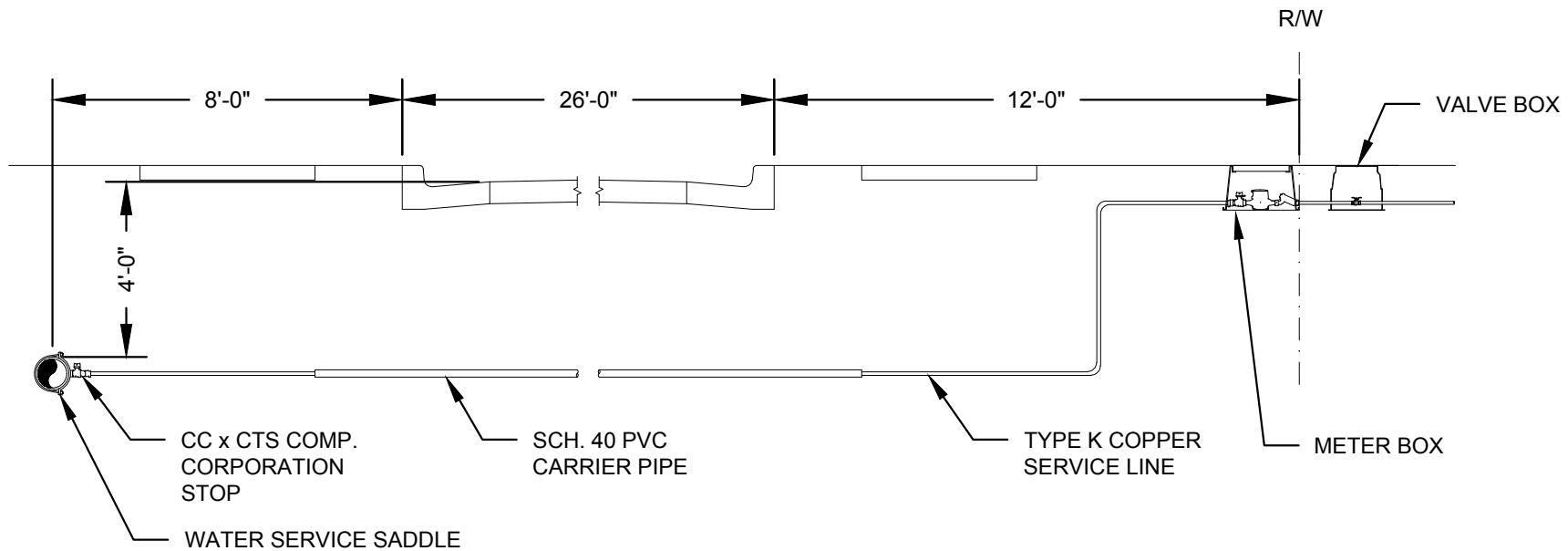
SPEC. DATE: 2024

REVISED: N/A

SCALE: N.T.S.

DETAIL NO.

W16



NOTES:

1. EACH SERVICE SHALL BE MARKED WITH A "W" SAW CUT INTO TOP OF CURB AND PAINTED BLUE.
2. INSERT A 4-FOOT LONG PIECE OF 1" PVC PIPE ADJACENT TO THE METER BOX TO MARK THE METER LOCATION. PAINT PVC PIPE BLUE.
3. THE HOLE IN THE METER BOX LID MUST BE PLUGGED WITH AN ANTENNA PLUG.
4. NO PERMANENT STRUCTURE SHALL BE ALLOWED WITHIN 5 FEET OF WATER SERVICE.
5. TYPICAL INSTALLATION MAY BE MODIFIED AT THE DISCRETION OF SCWA.



SPALDING COUNTY WATER AUTHORITY

LONG SIDE RESIDENTIAL SERVICE DETAIL

SPEC. DATE: 2024

REVISED: N/A

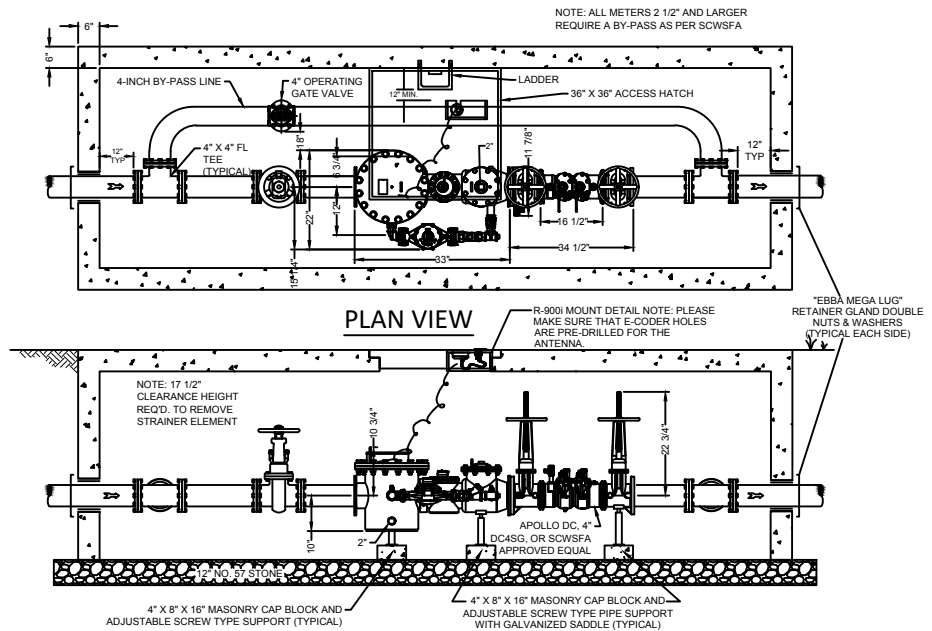
SCALE: N.T.S.

DETAIL NO.

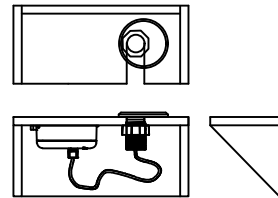
W17

NOTES:

1. ALL MATERIALS SHALL BE FURNISHED BY CONTRACTOR.
2. FIRE SERVICE LINE METER SHALL BE A HIGH PERFORMANCE PROTECTUS III METER AS MANUFACTURED BY NEPTUNE.
3. ALL FITTINGS INSIDE VAULT SHALL BE FLANGED.
4. VAULT SHALL BE PRECAST REINFORCED CONCRETE WITH MINIMUM 6-INCH THICKNESS TOP AND SIDES. INSIDE HEIGHT SHALL BE MINIMUM OF 6- FEET.
5. VAULT TOP SHALL BE REINFORCED CONCRETE WITH A MINIMUM 36" X 36" ACCESS OPENING. ACCESS OPENING SHALL BE OFFSET TO ONE SIDE.
6. VAULT SHALL BE PRECAST FOR NON-LOAD BEARING APPLICATIONS. WHEN VAULT IS EXPECTED TO CARRY A LIVE LOAD, DEVELOPERS ENGINEER SHALL SUBMIT A DETAILED DESIGN TO THE SCWSFA FOR APPROVAL PRIOR TO CONSTRUCTION.
7. BOTTOM OF VAULT SHALL BE FILLED AND REST ON MINIMUM OF 12-INCHES OF #57 STONE.
8. VAULT INLET/OUTLET PIPE OPENINGS SHALL BE SEALED WITH NON-SHRINK GROUT OR MORTAR. PIPE MUST NOT SUPPORT VAULT.
9. FIRE LINE METER AND BACKFLOW ASSEMBLY ARE TO BE SUPPORTED IN AT LEAST THREE (3) LOCATIONS.
10. MINIMUM CLEARANCES SHOWN MUST BE MAINTAINED. A MINIMUM OF 12-INCHES BETWEEN VAULT WALLS AND FLANGES OR FITTINGS IS TYPICAL.
11. DUCTILE IRON PIPE REQUIRED FOR PIPE ABOVE THREE (3) INCHES IN DIAMETER.
12. 36" X 36" HATCH TO BE APPROVED BY SCWSFA PRIOR TO CONSTRUCTION.
13. MANHOLE STEPS AT 15-INCHES O.C. ARE TO BE PLACED IN THE CENTER OF ACCESS HATCH. STEPS SHALL BE MADE OF POLYPROPYLENE CONSTRUCTION AND HAVE A NO. 3 DEFORMED STEEL ROD CENTER.
14. VAULT SHALL BE LOCATED ON PRIVATE PROPERTY AND PLACED WITHIN AN UTILITY EASEMENT TO ALLOW FOR MAINTENANCE OF VAULT.
15. BALL VALVES SHALL BE QUARTER TURN AND EQUIPPED WITH STAINLESS STEEL HANDLES AND NUTS.



SECTION VIEW



R-900i MOUNT DETAIL

OPERATING CHARACTERISTICS OF PROTECTUS III FIRE LINE METER				
SIZE (IN)	NORMAL OPERATING RANGE @100% ACCURACY (± 1.5%) (GPM)	AWWA STANDARD (GPM)	LOW FLOW @95% ACCURACY (GPM)	MAXIMUM INTERMITTENT FLOW RATE (GPM)
4	0.75 TO 1,200	2 TO 700	0.375	1,500



SPALDING COUNTY WATER AUTHORITY

**4" PROTECTUS III
FIRE LINE METER**

SPEC. DATE: 2024

REVISED: N/A

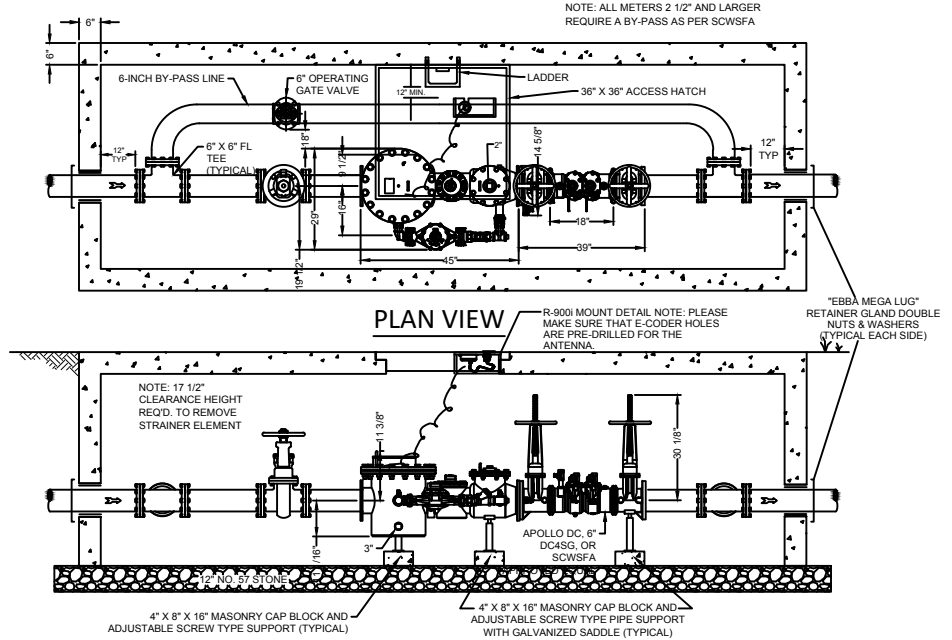
SCALE: N.T.S.

DETAIL NO.

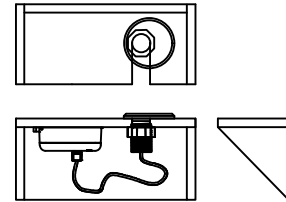
W18

NOTES:

1. ALL MATERIALS SHALL BE FURNISHED BY CONTRACTOR.
2. FIRE SERVICE LINE METER SHALL BE A HIGH PERFORMANCE PROTECTUS III METER AS MANUFACTURED BY NEPTUNE.
3. ALL FITTINGS INSIDE VAULT SHALL BE FLANGED.
4. VAULT SHALL BE PRECAST REINFORCED CONCRETE WITH MINIMUM 6-INCH THICKNESS TOP AND SIDES. INSIDE HEIGHT SHALL BE MINIMUM OF 6-FEET.
5. VAULT TOP SHALL BE REINFORCED CONCRETE WITH A MINIMUM 36" X 36" ACCESS OPENING. ACCESS OPENING SHALL BE OFFSET TO ONE SIDE.
6. VAULT SHALL BE PRECAST FOR NON-LOAD BEARING APPLICATIONS. WHEN VAULT IS EXPECTED TO CARRY A LIVE LOAD, DEVELOPERS ENGINEER SHALL SUBMIT A DETAILED DESIGN TO THE SCWSFA FOR APPROVAL PRIOR TO CONSTRUCTION.
7. BOTTOM OF VAULT SHALL BE FILLED AND REST ON MINIMUM OF 12-INCHES OF #57 STONE.
8. VAULT INLET/OUTLET PIPE OPENINGS SHALL BE SEALED WITH NON-SHRINK GROUT OR MORTAR. PIPE MUST NOT SUPPORT VAULT.
9. FIRE LINE METER AND BACKFLOW ASSEMBLY ARE TO BE SUPPORTED IN AT LEAST THREE (3) LOCATIONS.
10. MINIMUM CLEARANCES SHOWN MUST BE MAINTAINED. A MINIMUM OF 12-INCHES BETWEEN VAULT WALLS AND FLANGES OR FITTINGS IS TYPICAL.
11. DUCTILE IRON PIPE REQUIRED FOR PIPE ABOVE THREE (3) INCHES IN DIAMETER.
12. 36" X 36" HATCH TO BE APPROVED BY SCWSFA PRIOR TO CONSTRUCTION.
13. MANHOLE STEPS AT 15-INCHES O.C. ARE TO BE PLACED IN THE CENTER OF ACCESS HATCH. STEPS SHALL BE MADE OF POLYPROPYLENE CONSTRUCTION AND HAVE A NO. 3 DEFORMED STEEL ROD CENTER.
14. VAULT SHALL BE LOCATED ON PRIVATE PROPERTY AND PLACED WITHIN AN UTILITY EASEMENT TO ALLOW FOR MAINTENANCE OF VAULT.
15. BALL VALVES SHALL BE QUARTER TURN AND EQUIPPED WITH STAINLESS STEEL HANDLES AND NUTS.



SECTION VIEW



R-900i MOUNT DETAIL

OPERATING CHARACTERISTICS OF PROTECTUS III FIRE LINE METER				
SIZE (IN)	NORMAL OPERATING RANGE @100% ACCURACY (± 1.5%) (GPM)	AWWA STANDARD (GPM)	LOW FLOW @95% ACCURACY (GPM)	MAXIMUM INTERMITTENT FLOW RATE (GPM)
6	1.5 TO 2,500	4 TO 1,600	0.375	3,100



SPALDING COUNTY WATER AUTHORITY

**6" PROTECTUS III
FIRE LINE METER**

SPEC. DATE: 2024

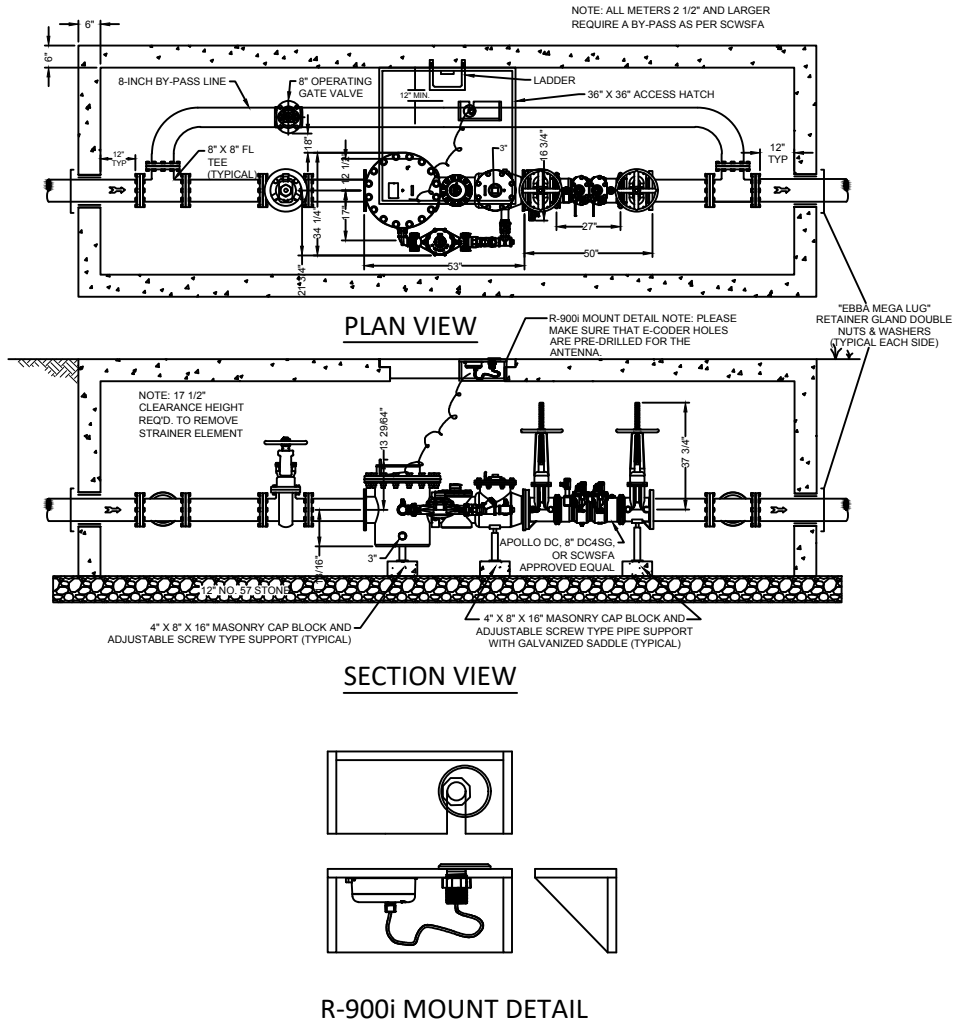
REVISED: N/A

SCALE: N.T.S.

DETAIL NO.
W19

NOTES:

1. ALL MATERIALS SHALL BE FURNISHED BY CONTRACTOR.
2. FIRE SERVICE LINE METER SHALL BE A HIGH PERFORMANCE PROTECTUS III METER AS MANUFACTURED BY NEPTUNE.
3. ALL FITTINGS INSIDE VAULT SHALL BE FLANGED.
4. VAULT SHALL BE PRECAST REINFORCED CONCRETE WITH MINIMUM 6-INCH THICKNESS TOP AND SIDES. INSIDE HEIGHT SHALL BE MINIMUM OF 6- FEET.
5. VAULT TOP SHALL BE REINFORCED CONCRETE WITH A MINIMUM 36" X 36" ACCESS OPENING. ACCESS OPENING SHALL BE OFFSET TO ONE SIDE.
6. VAULT SHALL BE PRECAST FOR NON-LOAD BEARING APPLICATIONS. WHEN VAULT IS EXPECTED TO CARRY A LIVE LOAD, DEVELOPERS ENGINEER SHALL SUBMIT A DETAILED DESIGN TO THE SCWSFA FOR APPROVAL PRIOR TO CONSTRUCTION.
7. BOTTOM OF VAULT SHALL BE FILLED AND REST ON MINIMUM OF 12-INCHES OF #57 STONE.
8. VAULT INLET/OUTLET PIPE OPENINGS SHALL BE SEALED WITH NON-SHRINK GROUT OR MORTAR. PIPE MUST NOT SUPPORT VAULT.
9. FIRE LINE METER AND BACKFLOW ASSEMBLY ARE TO BE SUPPORTED IN AT LEAST THREE (3) LOCATIONS.
10. MINIMUM CLEARANCES SHOWN MUST BE MAINTAINED. A MINIMUM OF 12-INCHES BETWEEN VAULT WALLS AND FLANGES OR FITTINGS IS TYPICAL.
11. DUCTILE IRON PIPE REQUIRED FOR PIPE ABOVE THREE (3) INCHES IN DIAMETER.
12. 36" X 36" HATCH TO BE APPROVED BY SCWSFA PRIOR TO CONSTRUCTION.
13. MANHOLE STEPS AT 15-INCHES O.C. ARE TO BE PLACED IN THE CENTER OF ACCESS HATCH. STEPS SHALL BE MADE OF POLYPROPYLENE CONSTRUCTION AND HAVE A NO. 3 DEFORMED STEEL ROD CENTER.
14. VAULT SHALL BE LOCATED ON PRIVATE PROPERTY AND PLACED WITHIN AN UTILITY EASEMENT TO ALLOW FOR MAINTENANCE OF VAULT.
15. BALL VALVES SHALL BE QUARTER TURN AND EQUIPPED WITH STAINLESS STEEL HANDLES AND NUTS.



OPERATING CHARACTERISTICS OF PROTECTUS III FIRE LINE METER

SIZE (IN)	NORMAL OPERATING RANGE @100% ACCURACY (±1.5%) (GPM)	AWWA STANDARD (GPM)	LOW FLOW @95% ACCURACY (GPM)	MAXIMUM INTERMITTENT FLOW RATE (GPM)
8	2.0 TO 4,000	7 TO 2,800	1.000	5,000

SPALDING COUNTY WATER AUTHORITY

SPEC. DATE: 2024

REVISED: N/A

SCALE: N.T.S.

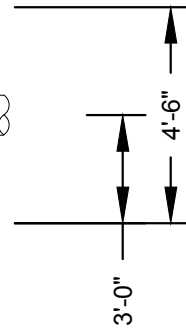
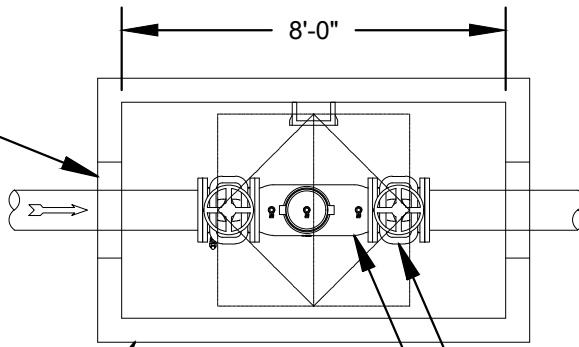
8" PROTECTUS III
FIRE LINE METER

DETAIL NO.

W20



24"x24" OPENING
SEALED WITH
NON-SHRINK
GROUT (TYP.)



PRECAST
CONCRETE
VAULT

COPPER

OS&Y GATE VALVE (TYP.)

DOUBLE CHECK VALVE
(WITH SCWA APPROVAL)

RPZ (W26)

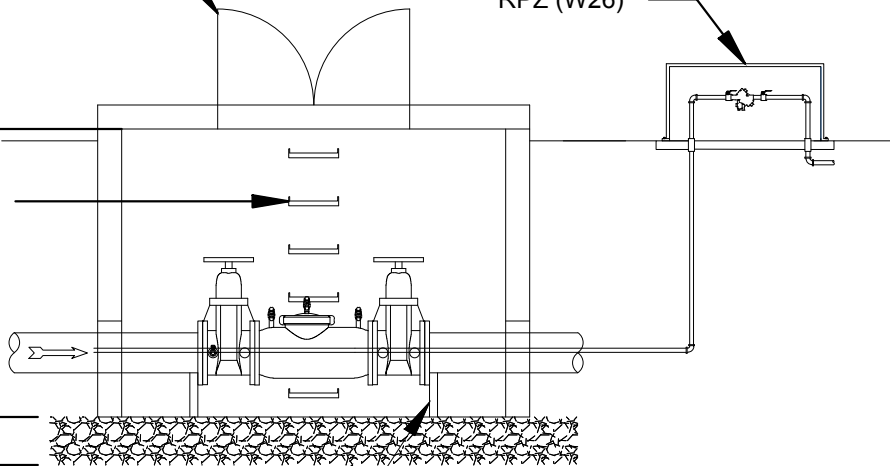
48"x48" ALUMINUM
ACCESS HATCH

RPZ (W26)

POLYPROPYLENE
MANHOLE STEP
SPACED AT 12" O.C.

6'-0"

12"



NO. 57 STABILIZATION STONE
PIPE SUPPORT (TYP.)

12"

12"

SCWA VARIANCE REQUIRED



SPALDING COUNTY WATER AUTHORITY

**COMMERCIAL / INDUSTRIAL
BACKFLOW PREVENTER
(4" AND LARGER)**

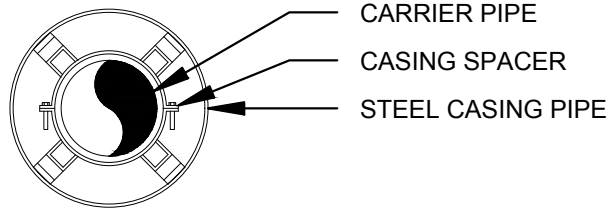
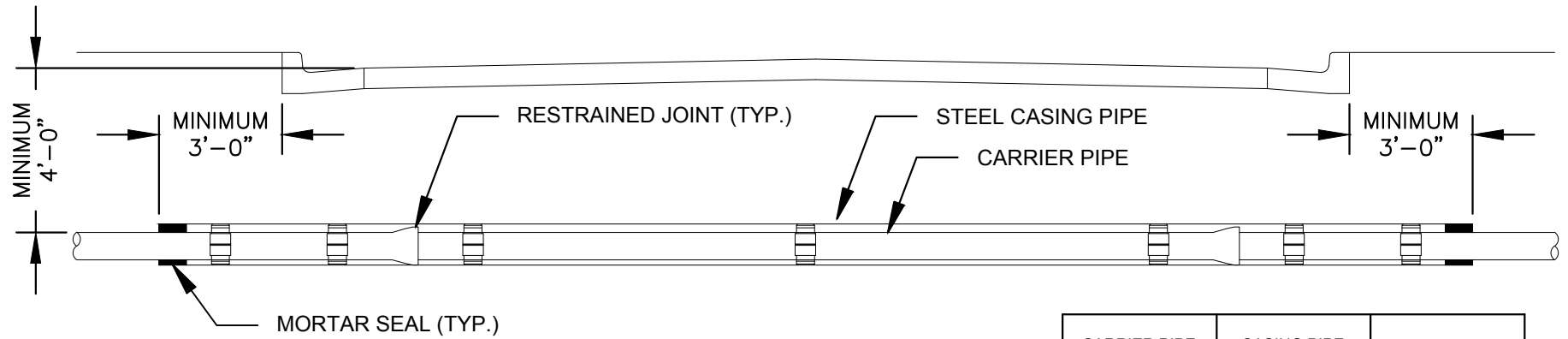
SPEC. DATE: 2024

REVISED: N/A

SCALE: N.T.S.

DETAIL NO.

W21



CARRIER PIPE NOMINAL DIAMETER (IN)	CASING PIPE NOMINAL DIAMETER (IN)	CASING PIPE THICKNESS (IN)
8	12	0.2500
10	16	0.2500
12	18	0.3130
16	24	0.3750

NOTES:

1. JOINTS INSIDE CASING PIPE SHALL BE RESTRAINED.
2. PROVIDE A MINIMUM OF 3 CASING SPACERS PER JOINT OF PIPE.
3. ENDS OF CASING PIPE SHALL BE SEALED WITH CEMENT MORTAR OR AS APPROVED BY SCWA.
4. ALL COUNTY ROAD CROSSINGS SHALL BE INSTALLED IN ACCORDANCE WITH SPALDING COUNTY DOT STANDARDS AND PERMIT REQUIREMENTS.
5. ALL STATE HIGHWAY CROSSINGS SHALL BE INSTALLED IN ACCORDANCE WITH GEORGIA DOT STANDARDS AND PERMIT REQUIREMENTS.
6. ALL RAILROAD CROSSINGS SHALL BE INSTALLED IN ACCORDANCE WITH AMERICAN RAILWAY ENGINEERING ASSOCIATION REGULATIONS AND IN ACCORDANCE WITH PERMIT REQUIREMENTS.



SPALDING COUNTY WATER AUTHORITY

TYPICAL JACK AND BORE DETAIL

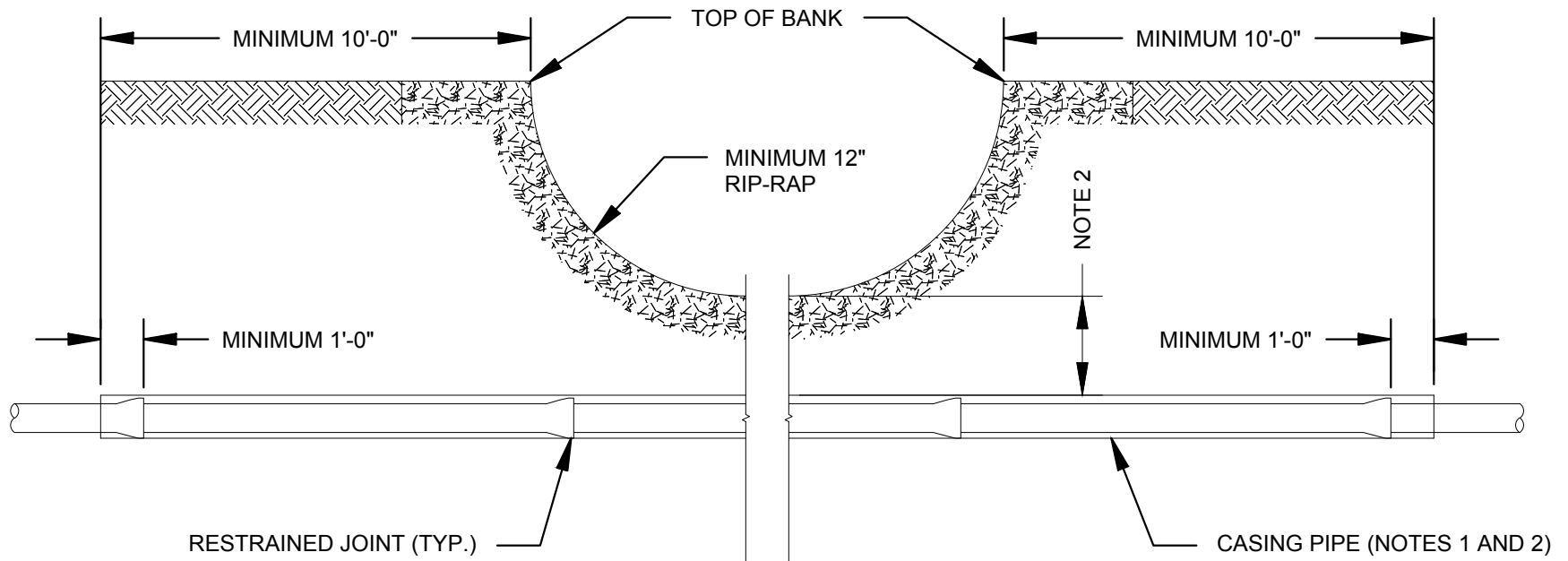
SPEC. DATE: 2024

REVISED: N/A

SCALE: N.T.S.

DETAIL NO.

W22



NOTES:

1. CASING PIPE IS REQUIRED WHEN DEPTH OF COVER IS LESS THAN 3 FEET FROM THE CREEK BOTTOM. MINIMUM 12" COVER TO TOP OF CASING.
2. REFER TO DETAIL W22 FOR CASING DIAMETER.
3. FOR OPEN CUT CREEK CROSSING INSTALLATION, PLACE STONE RIP-RAP A MINIMUM OF 5 FEET UPSTREAM AND 5 FEET DOWNSTREAM FROM CENTERLINE OF PIPE ALONG CREEK BED, HYDRAULIC CALCULATION SHOULD DETERMINE RIP-RAP SIZE AND LENGTH.



SPALDING COUNTY WATER AUTHORITY

CREEK CROSSING

SPEC. DATE: 2024

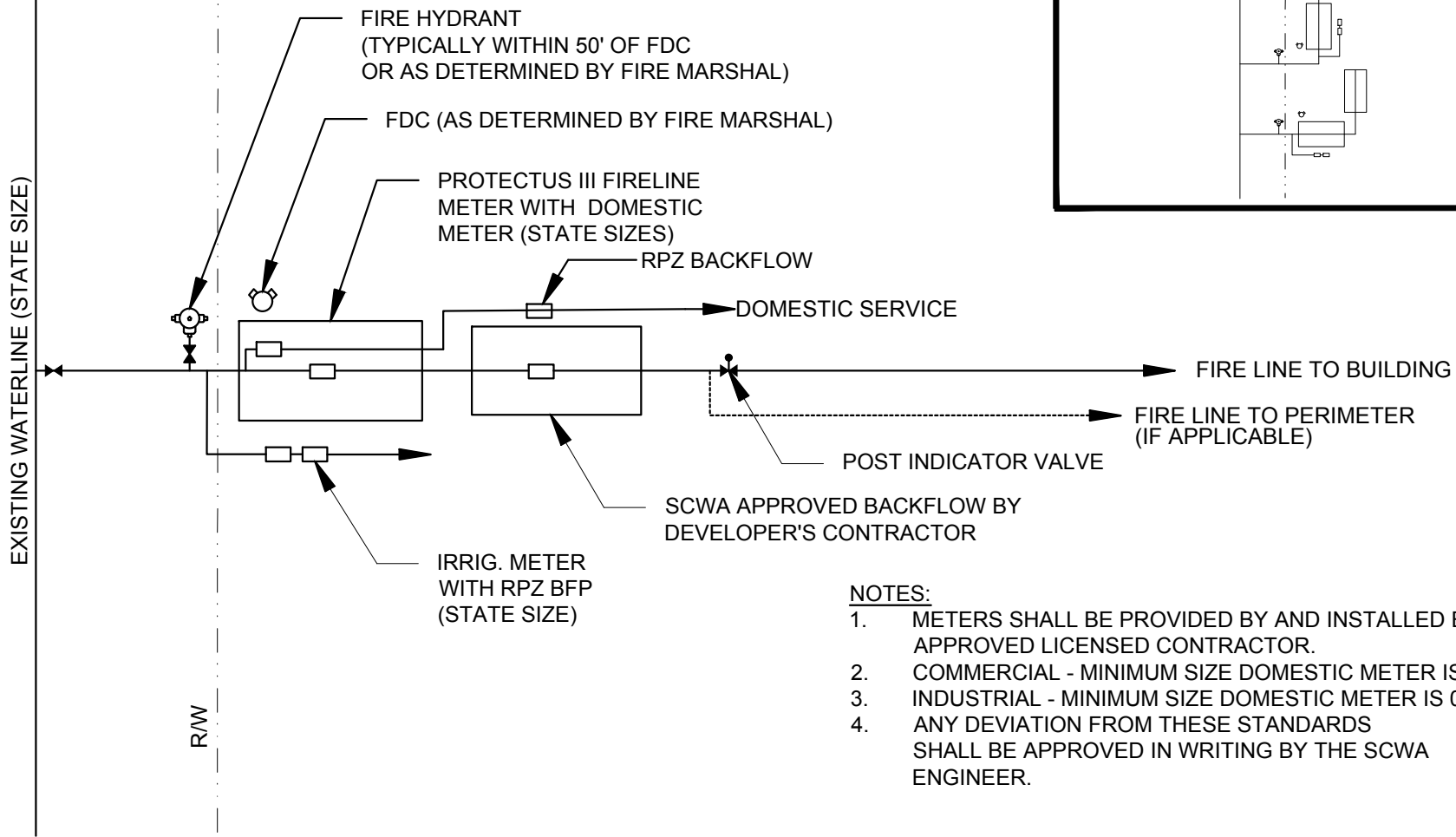
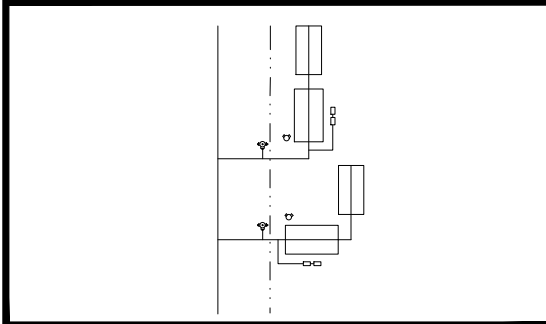
REVISED: N/A

SCALE: N.T.S.

DETAIL NO.

W23

ALTERNATE CONFIGURATIONS



NOTES:

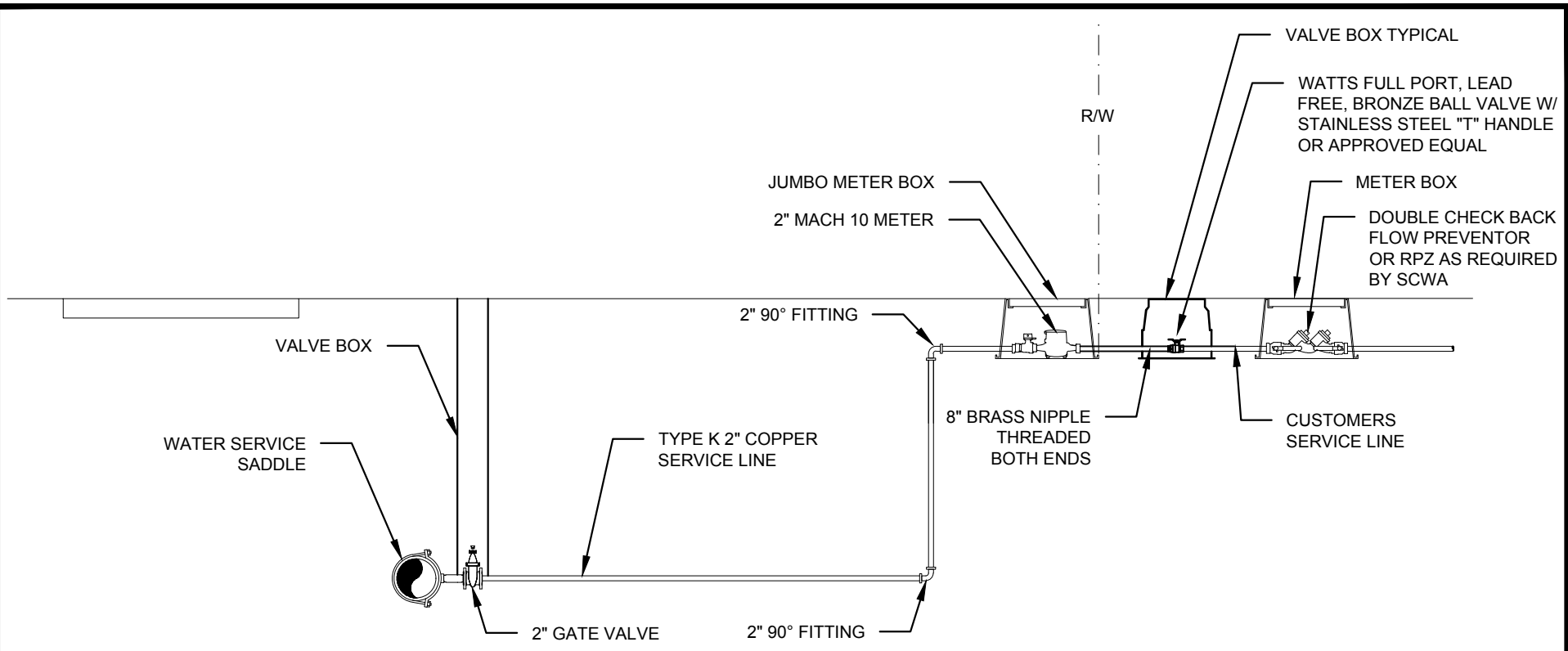
1. METERS SHALL BE PROVIDED BY AND INSTALLED BY APPROVED LICENSED CONTRACTOR.
2. COMMERCIAL - MINIMUM SIZE DOMESTIC METER IS 01".
3. INDUSTRIAL - MINIMUM SIZE DOMESTIC METER IS 02".
4. ANY DEVIATION FROM THESE STANDARDS SHALL BE APPROVED IN WRITING BY THE SCWA ENGINEER.



SPALDING COUNTY WATER AUTHORITY

TYPICAL COMMERCIAL / INDUSTRIAL
METER CONFIGURATIONS

SPEC. DATE: 2024
REVISED: N/A
SCALE: N.T.S.
DETAIL NO. W24



NOTES:

1. NO PERMANENT STRUCTURES SHALL BE ALLOWED WITHIN 5 FEET OF WATER SERVICE.
2. TYPICAL INSTALLATION MAY BE MODIFIED AT THE DISCRETION OF SCWA.
3. IF METER IS WITHIN R/W, UTILITY EASEMENT NOT REQUIRED.
4. ACTUAL PLACEMENT OF METER WILL BE DETERMINED BY SCWA REPRESENTATIVE.



SPALDING COUNTY WATER AUTHORITY

2 " METER INSTALLATION DETAIL

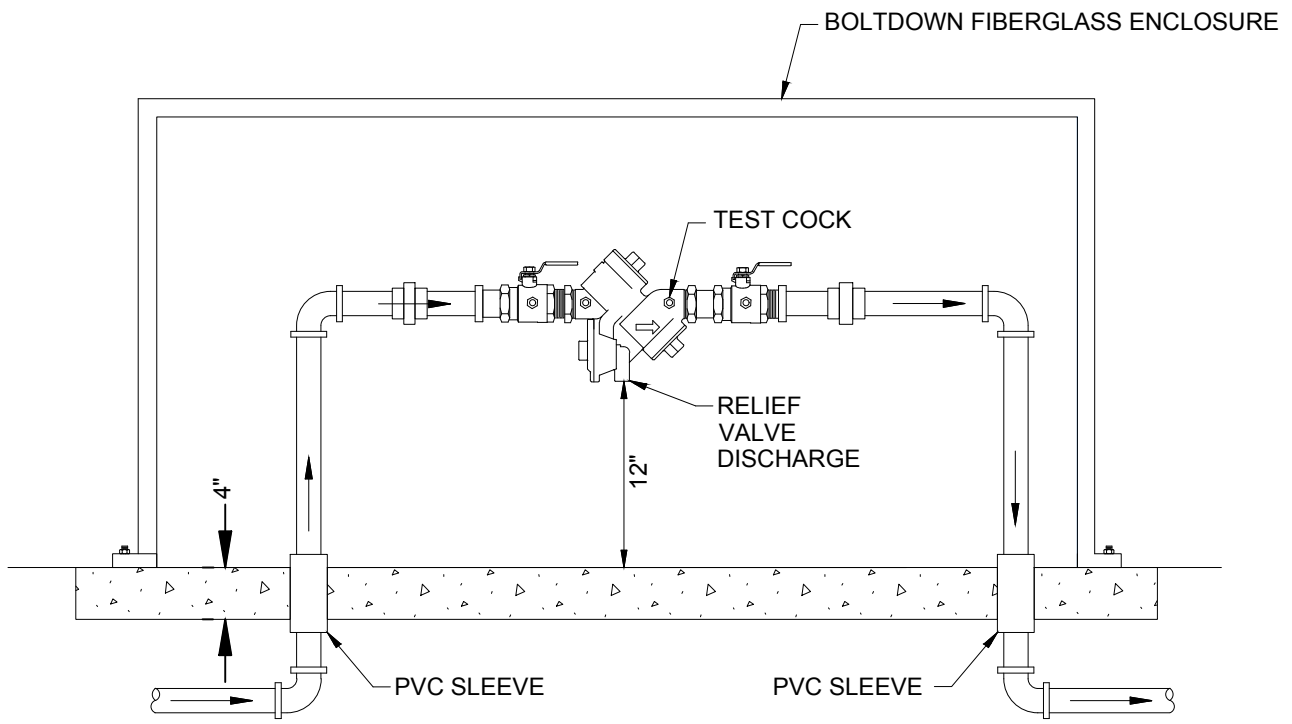
SPEC. DATE: 2024

REVISED: N/A

SCALE: N.T.S.

DETAIL NO.

W25



NOTES:

1. NO PERMANENT STRUCTURES SHALL BE ALLOWED WITHIN 5 FEET.
2. TYPICAL INSTALLATION MAY BE MODIFIED AT THE DISCRETION OF SCWA.
3. MINIMUM OF 4 TEST COCKS.



SPALDING COUNTY WATER AUTHORITY

**REDUCED PRESSURE
ZONE DETAIL**

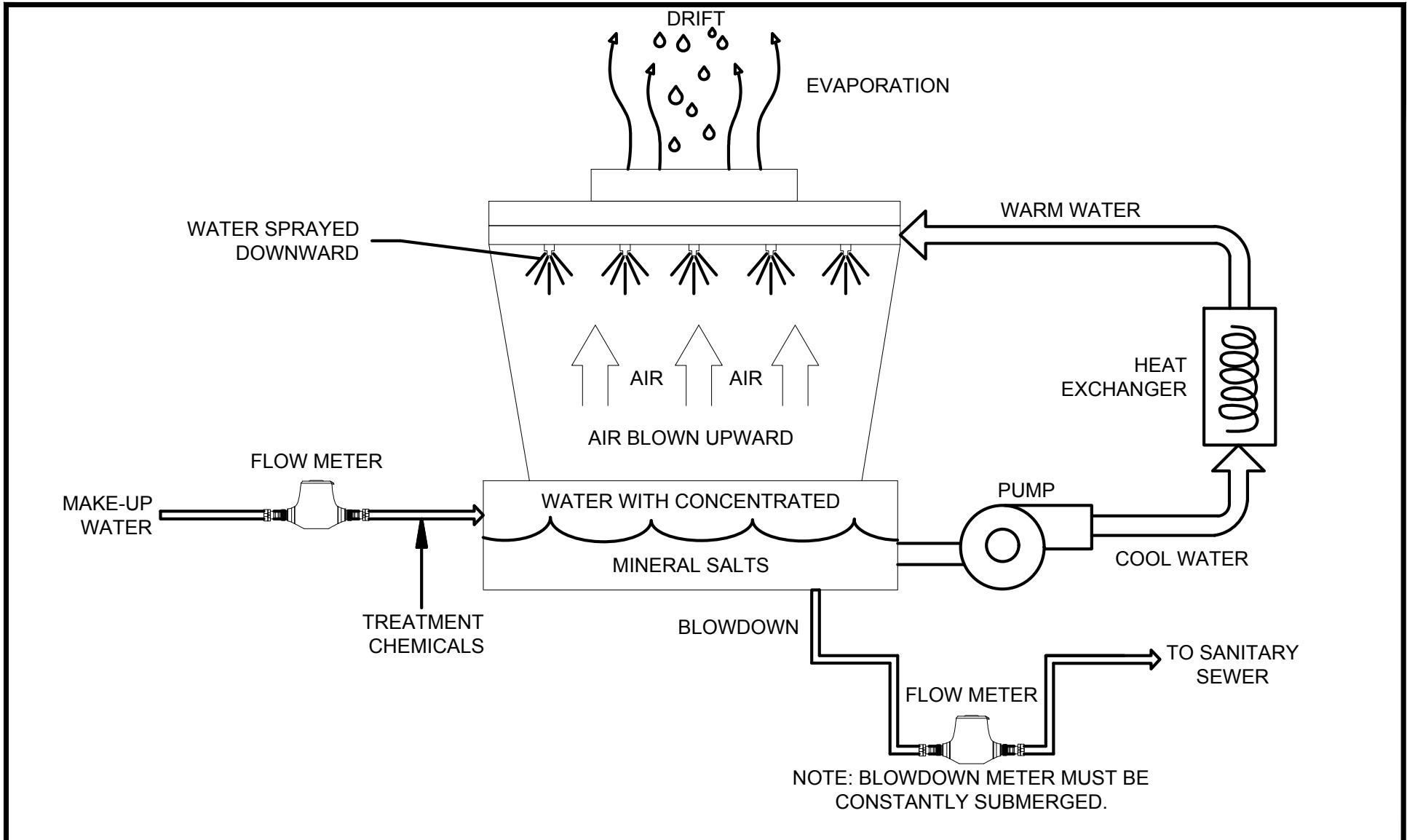
SPEC. DATE: 2024

REVISED: N/A

SCALE: N.T.S.

DETAIL NO.

W26



SPALDING COUNTY WATER AUTHORITY

COOLING TOWER METER CONFIGURATION

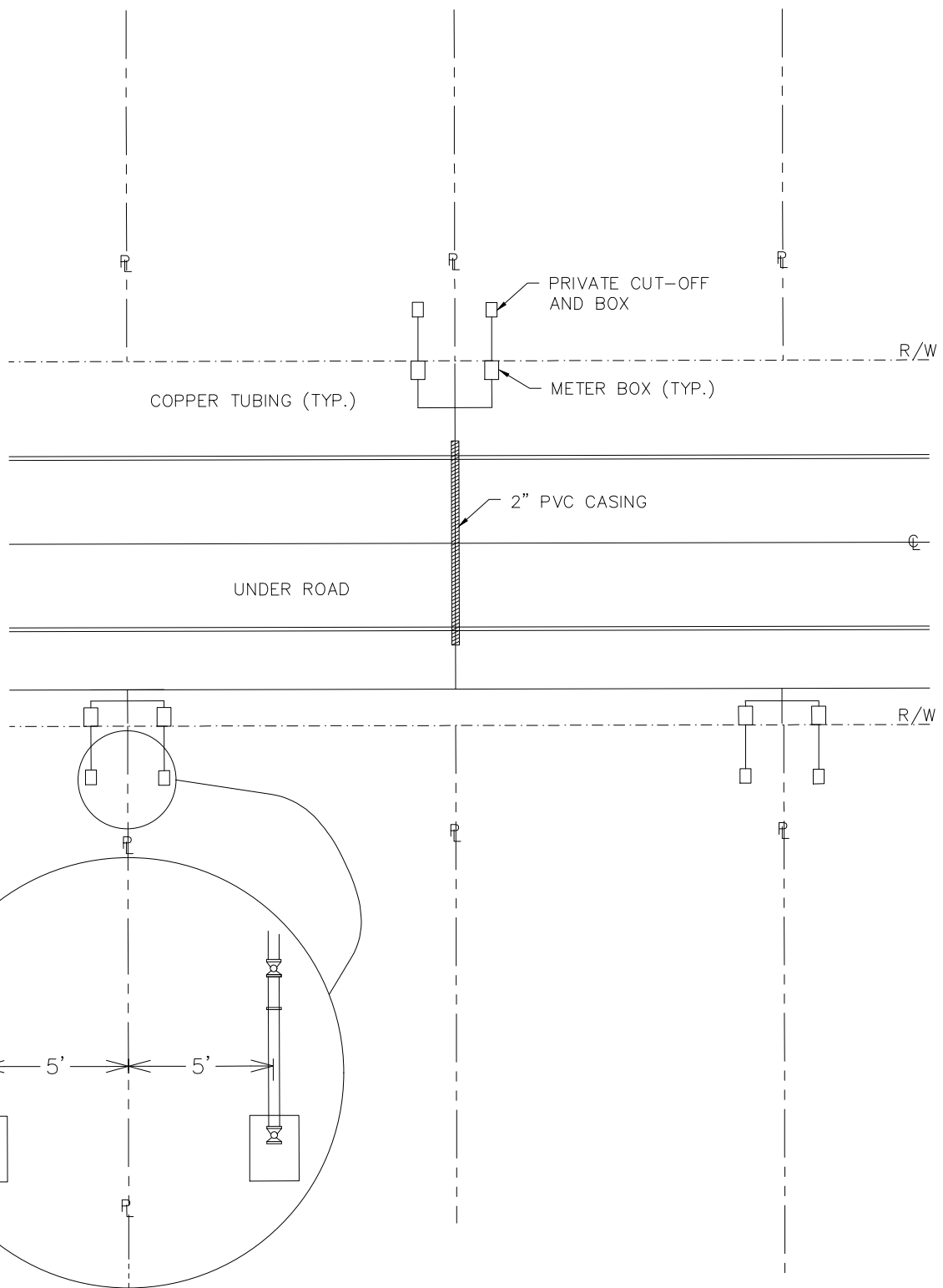
SPEC. DATE: 2024

REVISED: N/A

SCALE: N.T.S.

DETAIL NO.

W27



SPALDING COUNTY WATER AUTHORITY

WATER METER LOCATION FOR SUBDIVISION

SPEC. DATE: 2026

REVISED: N/A

SCALE: N.T.S.

DETAIL NO.

W28