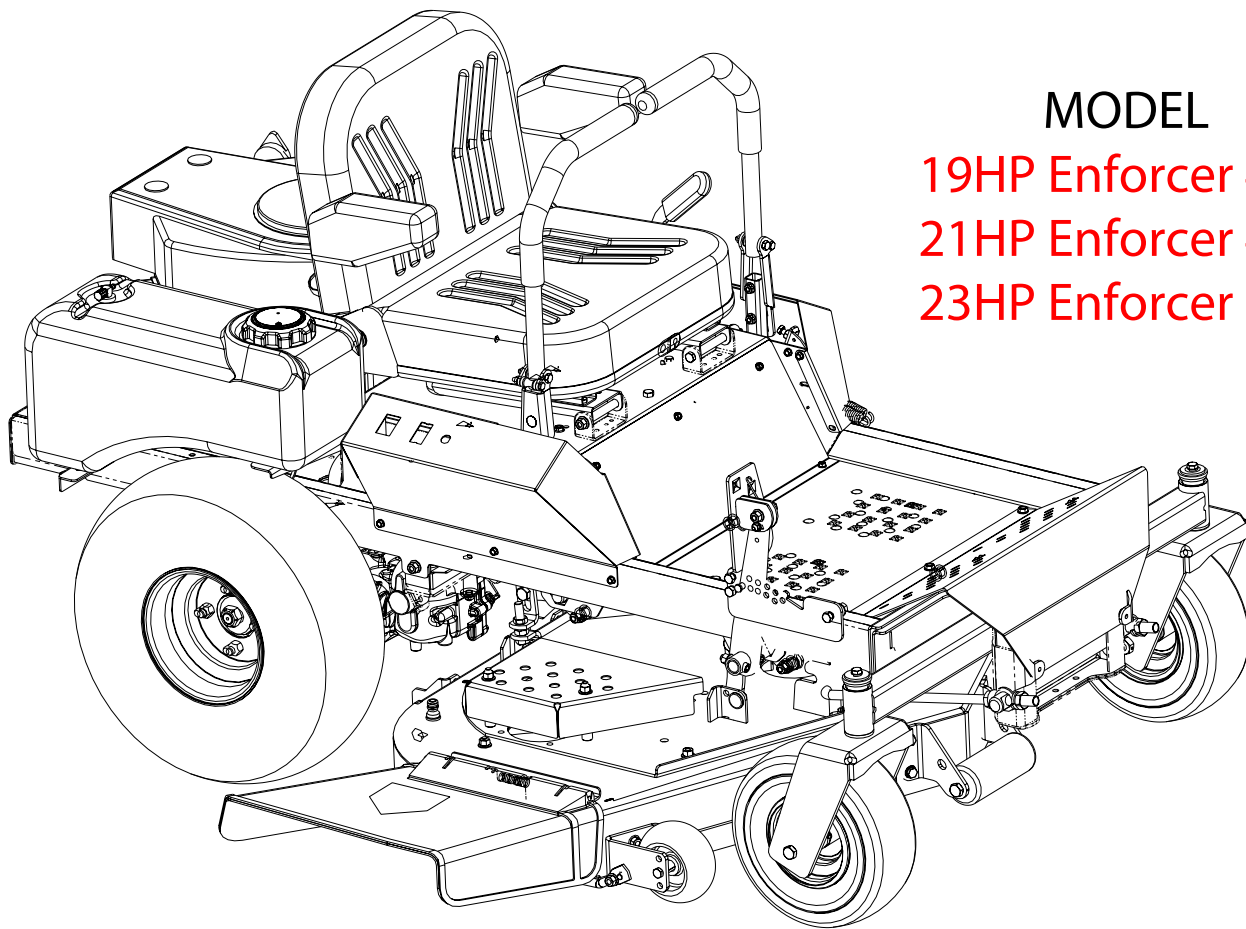




Hydrostatic Zero-Turn Commercial Riding Mower

Turf Equipment



MODEL

19HP Enforcer 44

21HP Enforcer 48

23HP Enforcer 54

TIME SCHEDULE

FOREWORD

This manual has been prepared to provide the flat rate times needed to do individual servicing jobs.
Please make full use of the flat rate times when filling out Warranty Claims.

1. Use the Flat Rate Schedule

To help dealers correctly identify flat rate times of service work to be done. This Flat Rate Schedule includes an illustration from the covered models Illustrated Parts List. Referral to the corresponding Illustrated Parts list can be used for part numbers. The corresponding Ipl is listed at the bottom of this page.

2. Flat Rate Time

The flat rate time is based on the service done by:

1. Use of common hand tools for all flat rate times.
(Impact wrench, when used will be called out).
2. Use of special tools.
3. Includes time to obtain necessary tools.
4. Flat rate time includes disassemble, assemble, clean, measurement or operation test.
5. Flat rate time does not include diagnostic time.
(Unless where called out).

3. R&I (Remove & Install):

To remove and install the same part or a new part for replacement.

R&I Times include:

1. Machine in shop.
2. Fluid(s) drainage. (If job requires).
3. Removal and replacement of the part or subpart.
4. Removal of part(s) or subpart to a work bench for inspection or replacement(s). (If job requires).
5. Removal from work bench. (If required from item 4).
6. Installation of parts or subpart
7. Fluid(s) refill. (if job requires).
8. Adjustments. (If job requires).
9. Operation test.

The Illustrated Parts Manual for this Flat Rate Manual is **02003734 Rev. 07-9.**

How To Use The Flat Rate Guide

When One Time Is Shown For Multiple Part Descriptions, As In The Example Below, All Part Descriptions Are Allotted The Time Shown in the Shaded or grouped areas.

For Example: When Replacing The PTO Switch The Time Allotted is 0.4.

If Replacing A Service Monitor, PTO Switch and An Ignition Switch Module The Time Allotted Is 0.4.

The Ref. Number indicates the part illustrated on the corresponding page of this Time Schedule / Flat Rate Guide which is identical to the original IPL page.

Dash Panel:

Ref. Number	Part Description	R/I Time	Model i1046	Model i1050
32	Storage Net	0.1	X	X
29	Throttle Control Knob	0.1	X	X
43	Dash Support Plate	0.4	X	X
24	Dash Panel Removal (NOTE 1).		X	X
16	12 Volt Power Receptacle		X	X
18	Service Monitor		X	X
19	PTO Switch		X	X
20	Ignition Switch Module (NOTE 2).		X	X
22	Dash Brake Lever		X	X
36	Throttle Control Cable (NOTE 3).	0.6	X	X
37	Choke Control Cable (NOTE 3).		X	X
24	Dash Panel Replace (NOTE 4).	0.7	X	X
41 & 42	Left Hand & Right Hand Dash Support (NOTE 5).	0.8	X	X

NOTE 1: Time Does Not Include Removal Of Throttle & Choke Cables.

NOTE 2: Refer To Page 40 For Decal/Label Times.

NOTE 3: Time Includes Muffler & Dash Removal Time.

NOTE 4: Time Includes Muffler, Throttle & Choke Cable Removal Time.

NOTE 5: Time Includes Dash, Battery Tray, & Dash Support Plate Removal Time.

Notes Will Indicate If Certain Item Times Include Additional Item Times To Perform The Repair.

For Example: The Time For The Dash Panel Replacement Of 0.7 Includes The Time Of Removing The Muffler And The Choke And Throttle Cables.

The Item Time At The Bottom Includes All The Items Above It To Achieve That Time.

For Example: All Items Below The Throttle Control Knob Have This Time Allowed (0.1) Included In Their Time. If Replacing The Dash Panel **DO NOT** Add $0.7 + 0.6 + 0.4 + 0.1$ For A Total Time Of 1.8 Hours. Claims Will Be Adjusted Accordingly When This Is Done.

This Time Schedule Includes The Following Models.

Model 19HP Enforcer 44.	(2007-2008)
Model 21HP Enforcer 48.	(2007-2008)
Model 23HP Enforcer 54.	(2007-2008)

NOTE:

Diagnostic Time Is Allowed For The Major Components, But Not Included In Any Times Throughout This Time Schedule/Flat Rate Guide. Diagnostic Time Must Be Included On The Warranty Claim As Follows.

Steering System Diagnostic	0.7
Hydraulic Brake System Diagnostic	0.7
Drive Train Diagnostic	0.7
Electrical System Diagnostic	0.7
Engine Diagnostic	1.5

(Note: The Kohler Engine Evaluation Sheets Must Be Filled Out & Accompany The Warranty Claim When Replacing A Complete Engine In The Warranty Period). The Evaluation Sheets Are Available On The Dealer Service Support Site, I.D. # 2159

NOTE:

Kawasaki Engine Flat Rate Repair Times Are Available On The Dealer Service Support Site, I.D. # 2294.

NOTE:

Kohler Engine Flat Rate Repair Times Are Available On The Dealer Service Support Site, I.D. # 2295

NOTE:

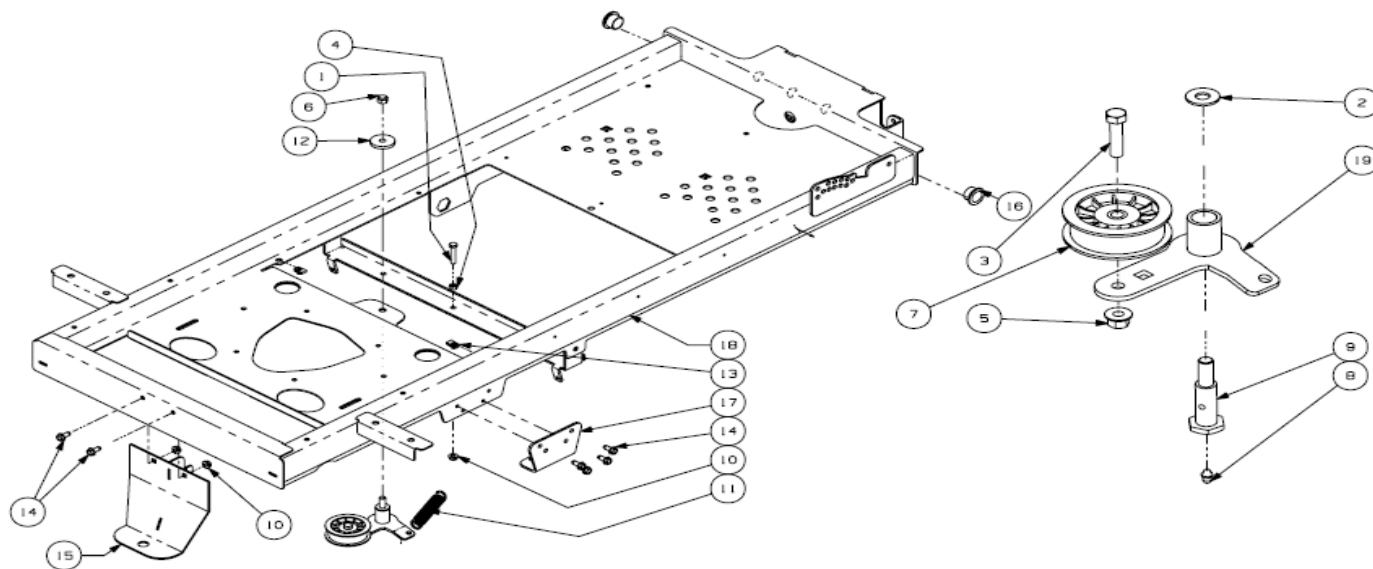
Hydro Gear Flat Rate Times Are As Follows.

All/Any Internal Repairs: 2.0 R&I *(Does Not Include Trans R&I)* .

All/Any External Repairs: 0.5 R&I. *(Does Not Include Trans R&I)* .

Frame Assembly- Figure 1

Flat Rate Guide

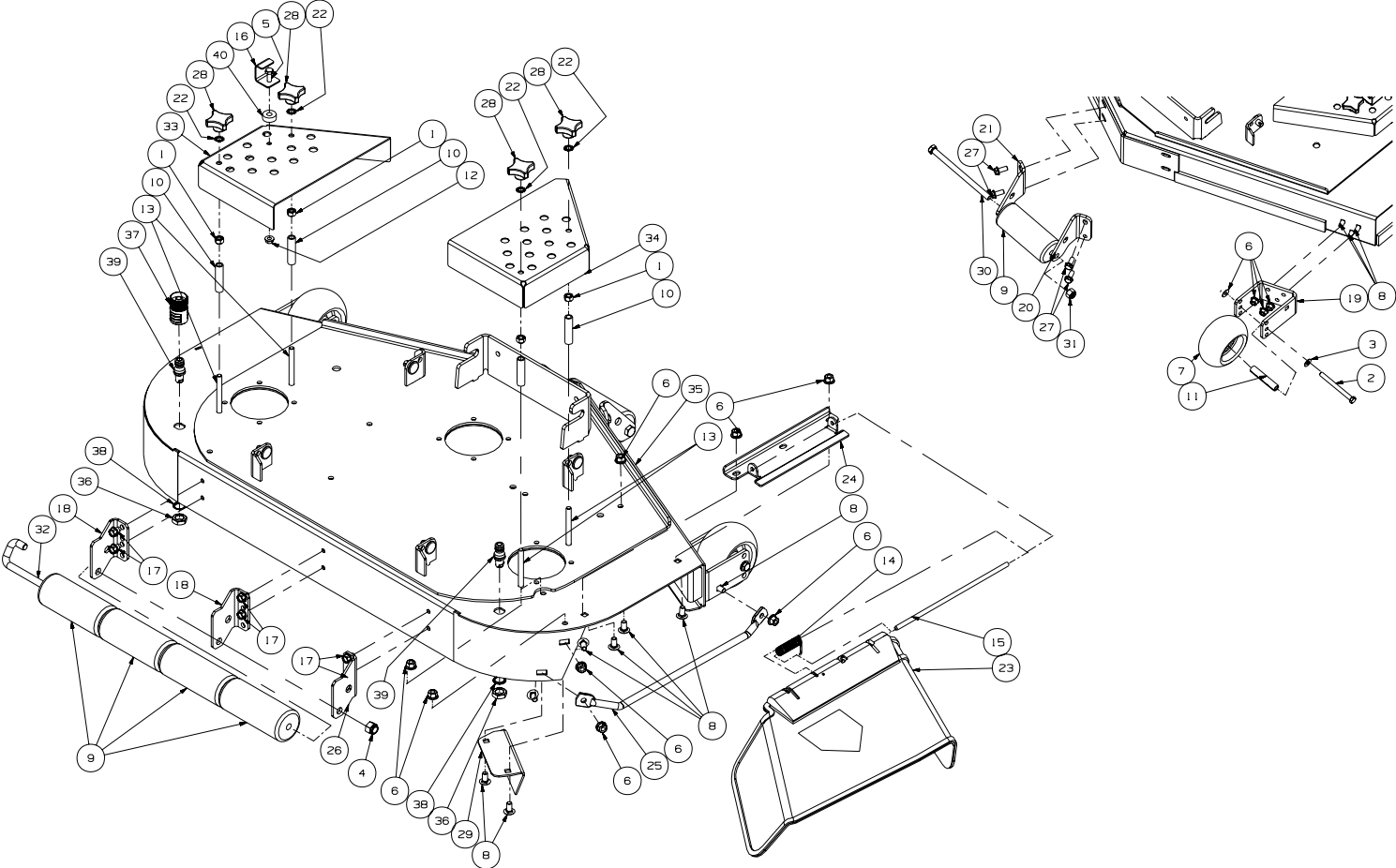


GD: 02002755-01/11/07

Frame Assembly- Figure 1:

Ref. Number	Part Description	R/I Time	Model 44"	Model 48"	Model 54"
15	Hitch	0.1	X	X	X
NOTE: The Following Times Do Not Include Deck Removal & Installation.					
11	Extension Spring	0.1	X	X	X
16	Bronze Bushing	0.2	X	X	X
9	Shoulder Bolt		X	X	X
19	Idler Arm Assembly	0.3	X	X	X
7	Flat Idler Pulley With Adapter		X	X	X
NOTE: The Following Time Does Not Include Transssmission Removal & Installation.					
17	Transmission Mounting Bracket (Includes Both Sides).	0.3	X	X	X
18	Frame Assembly Weldment	(A)	X	X	X
NOTE: (A) Call For Authorization For Frame Replacement.					

44" Fabricated Cutter Deck - Figure 2



GD: 02003468-03/23/07

44" Fabricated Cutter Deck- Figure 2

Flat Rate Guide

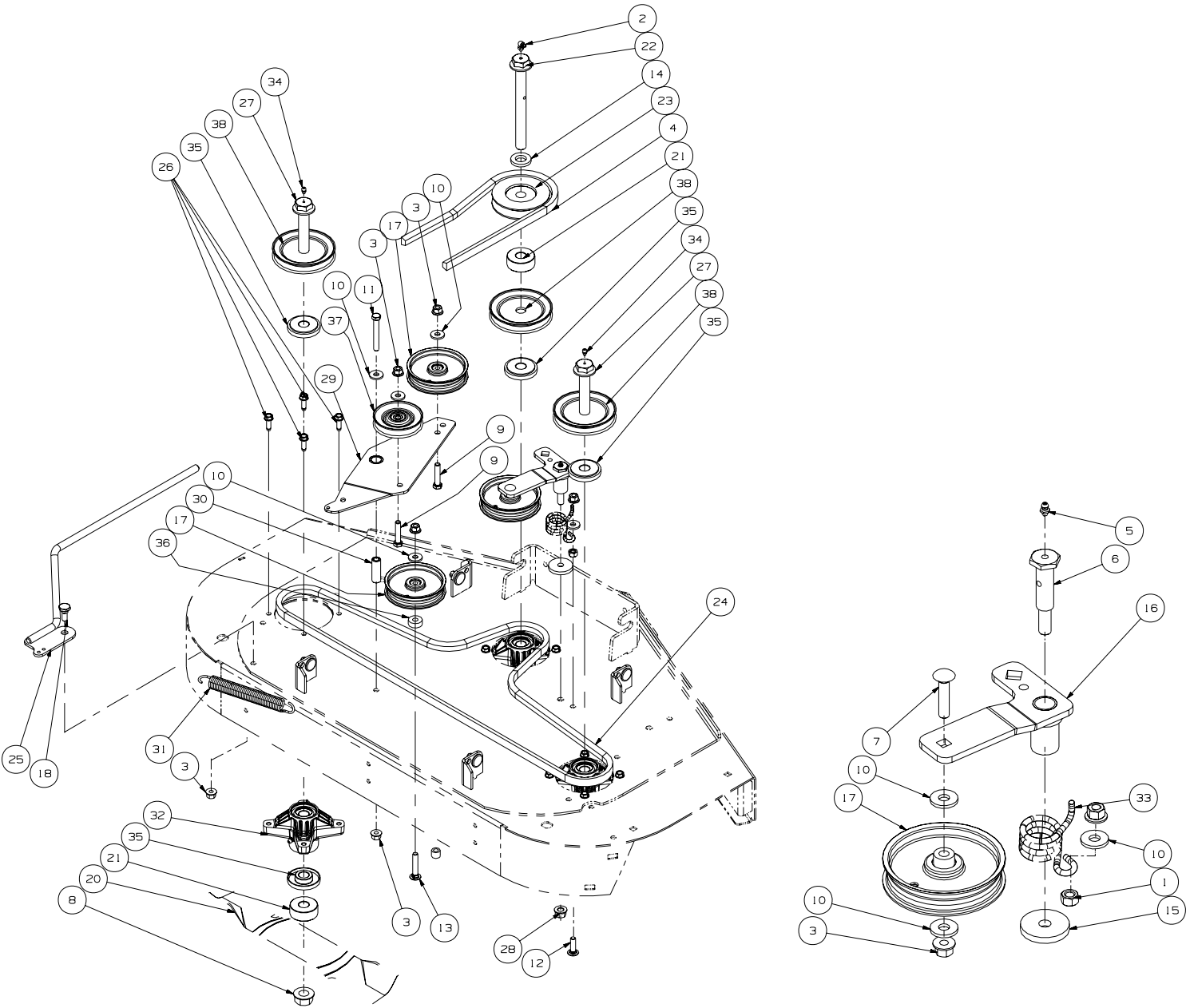
44" Fabricated Cutter Deck:

Ref. Number	Part Description	R/I Time	Model 44"	Model 48"	Model 54"
NOTE: The Following Times Do Not Include Deck R&I.					
14	Torsion Spring		X		
15	Chute Deflector Rod		X		
23	Deflector Chute	0.1	X		
24	Deflector Chute Bracket		X		
25	Deck Finger Guard		X		
16	Stop Bracket		X		
28	Plastic Knob	0.1	X		
33	LH Belt Cover		X		
40	Spacer		X		
28	Plastic Knob	0.1	X		
34	RH Belt Cover		X		
29	Chute Bracket	0.1	X		
39	Deck Water Nozzle	0.1	X		
7	Ball Wheel (Both Sides)		X		
11	Wheel Spacer (Both Sides)	0.2	X		
19	Front Anti-Scalp Wheel Mount Bracket (Both Sides)		X		
9	Front Roller		X		
20	LH Front Roller Bracket	0.2	X		
21	RH Front Roller Bracket		X		
9	Rear Rollers		X		
18	Deck Roller Mount Bracket	0.2	X		
26	Grass Catcher Roller Bracket		X		
32	J-Hook		X		

Item Not Shown:

Ref. Number	Part Description	R/I Time	Model 44"	Model 48"	Model 54"
N/S	Deck Removal & Installation	0.5	X		

44" Fabricated Deck Spindle Assembly- Figure 3



GD: 02003467-04/04/07

44" Fabricated Deck Spindle Assembly

Flat Rate Guide

-Figure 3

44" Fabricated Deck Spindle Assembly:

Ref. Number	Part Description	R/I Time	Model 44"	Model 48"	Model 54"
NOTE: The Following Times Do Not Include Deck R&I of 0.5.					
4	PTO Belt	0.1	x		
8 & 20	Nut & Blade (Each)	0.1	x		
21 & 35	Spacer & Spindle Spacer (Each)		x		
17 & 37	Flat Idler Pulley & V Idler Pulley (Each)	0.1	x		
18	Shoulder Bolt		x		
25	Spring Tension Rod Assembly	0.1	x		
31	Extension Spring		x		
24	Deck Belt	0.1	x		
6	Shoulder Bolt		x		
16	Idler Arm Assembly	0.3	x		
17	Flat Idler Pulley		x		
33	Idler Torsion Spring		x		

Center Spindle Assembly:

Ref. Number	Part Description	R/I Time	Model 44"	Model 48"	Model 54"
NOTE: The Following Times Do Not Include Deck R&I of 0.5.					
21 & 35	Spacer & Spindle Spacer		x		
22	Center Spindle Bolt	0.3	x		
23 & 38	Cast V Pulley & Spindle Pulley		x		
32	Center Spindle Assembly		x		

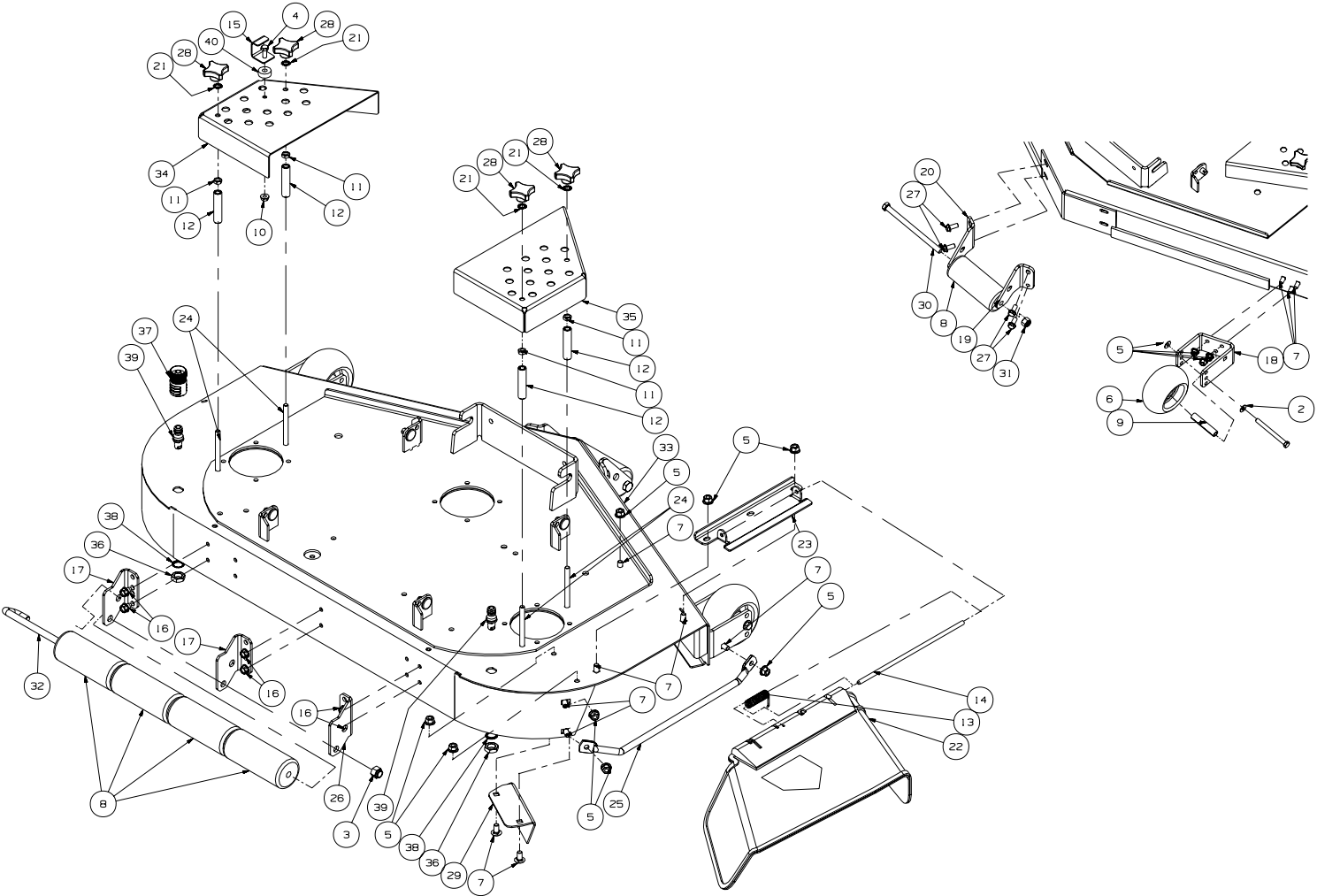
Left Hand Spindle Assembly:

Ref. Number	Part Description	R/I Time	Model 44"	Model 48"	Model 54"
NOTE: The Following Times Do Not Include Deck R&I of 0.5.					
35	Spindle Spacer		x		
27	Spindle Bolt	0.3	x		
32	Spindle Assembly		x		
38	Spindle Pulley		x		

Right Hand Spindle Assembly:

Ref. Number	Part Description	R/I Time	Model 44"	Model 48"	Model 54"
NOTE: The Following Times Do Not Include Deck R&I of 0.5.					
35	Spindle Spacer		x		
27	Spindle Bolt	0.3	x		
32	Spindle Assembly		x		
38	Spindle Pulley		x		

48" Fabricated Cutter Deck - Figure 4



GD: 02002794-03/15/07

48" Fabricated Cutter Deck- Figure 4

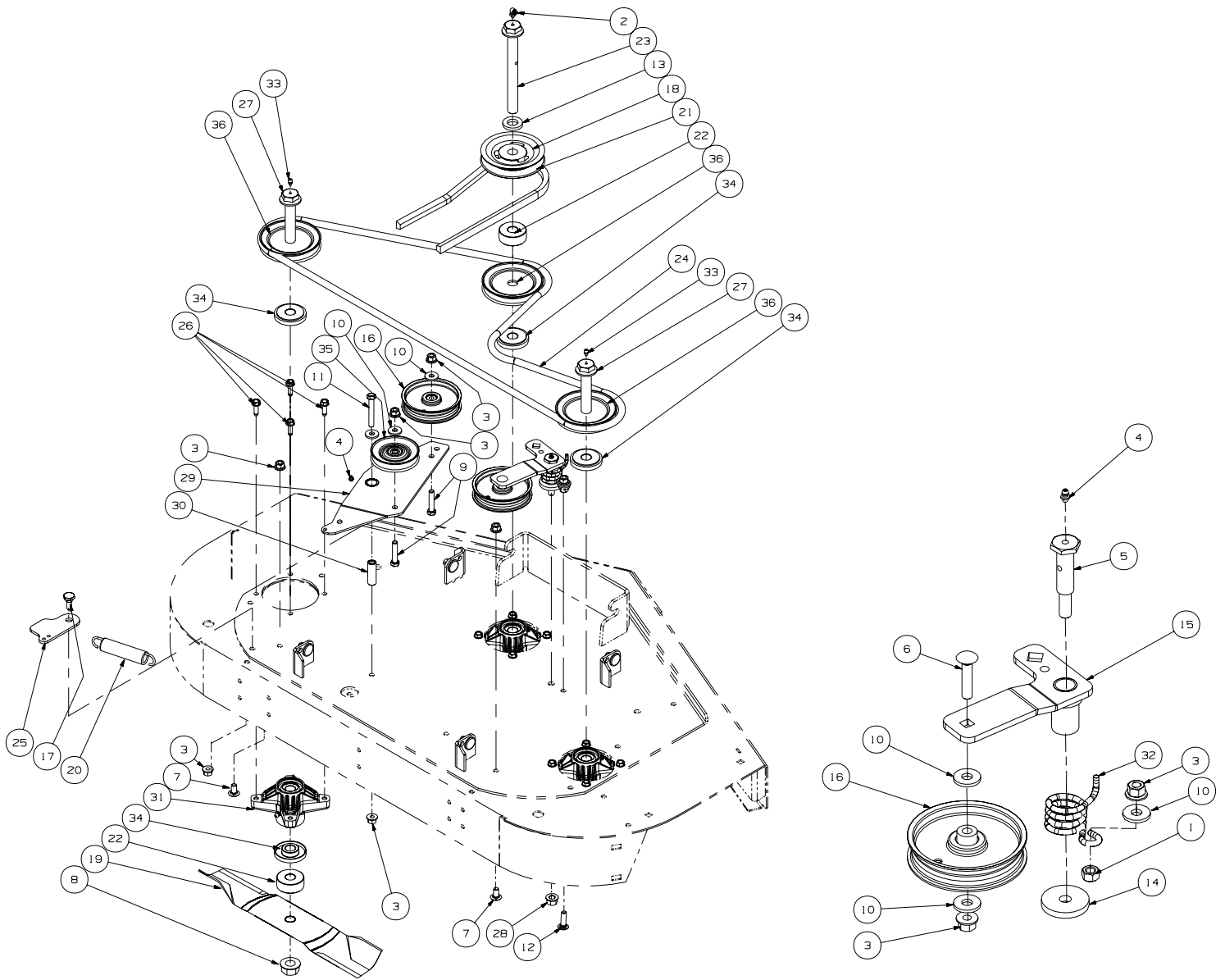
Flat Rate Guide

48" Fabricated Cutter Deck:

Ref. Number	Part Description	R/I Time	Model 44"	Model 48"	Model 54"
NOTE: The Following Times Do Not Include Deck R&I.					
13	Torsion Spring			X	
14	Chute Deflector Rod			X	
22	Deflector Chute	0.1		X	
23	Deflector Chute Bracket			X	
25	Deck Finger Guard			X	
15	Stop Bracket			X	
28	Plastic Knob	0.1		X	
34	LH Belt Cover			X	
40	Spacer			X	
28	Plastic Knob	0.1		X	
35	RH Belt Cover			X	
29	Chute Bracket	0.1		X	
39	Deck Water Nozzle	0.1		X	
6	Ball Wheel (Both Sides)			X	
9	Wheel Spacer (Both Sides)	0.2		X	
18	Front Anti-Scalp Wheel Mount Bracket (Both Sides)			X	
8	Front Roller			X	
19	LH Front Roller Bracket	0.2		X	
20	RH Front Roller Bracket			X	
8	Rear Rollers			X	
17	Deck Roller Mount Bracket	0.2		X	
26	Grass Catcher Roller Bracket			X	
32	J-Hook			X	

Item Not Shown:

Ref. Number	Part Description	R/I Time	Model 44"	Model 48"	Model 54"
N/S	Deck Removal & Installation	0.5		X	



GD: 02002791-02/28/07

48" Fabricated Deck Spindle Assembly

Flat Rate Guide

-Figure 5

48" Fabricated Deck Spindle Assembly:

Ref. Number	Part Description	R/I Time	Model 44"	Model 48"	Model 54"
NOTE: The Following Times Do Not Include Deck R&I of 0.5.					
21	PTO Belt	0.1		X	
8 & 19	Nut & Blade (Each)	0.1		X	
22 & 34	Spacer & Spindle Spacer (Each)			X	
16 & 35	Flat Idler Pulley & V Idler Pulley (Each)	0.1		X	
17	Shoulder Bolt			X	
25	Spring Tension Rod Assembly	0.1		X	
20	Extension Spring			X	
24	Deck Belt	0.1		X	
5	Shoulder Bolt			X	
15	Idler Arm Assembly	0.3		X	
16	Flat Idler Pulley			X	
32	Idler Torsion Spring			X	

Center Spindle Assembly:

Ref. Number	Part Description	R/I Time	Model 44"	Model 48"	Model 54"
NOTE: The Following Times Do Not Include Deck R&I of 0.5.					
21 & 34	Spacer & Spindle Spacer			X	
23	Center Spindle Bolt	0.3		X	
18 & 36	Cast V Pulley & Spindle Pulley			X	
31	Center Spindle Assembly			X	

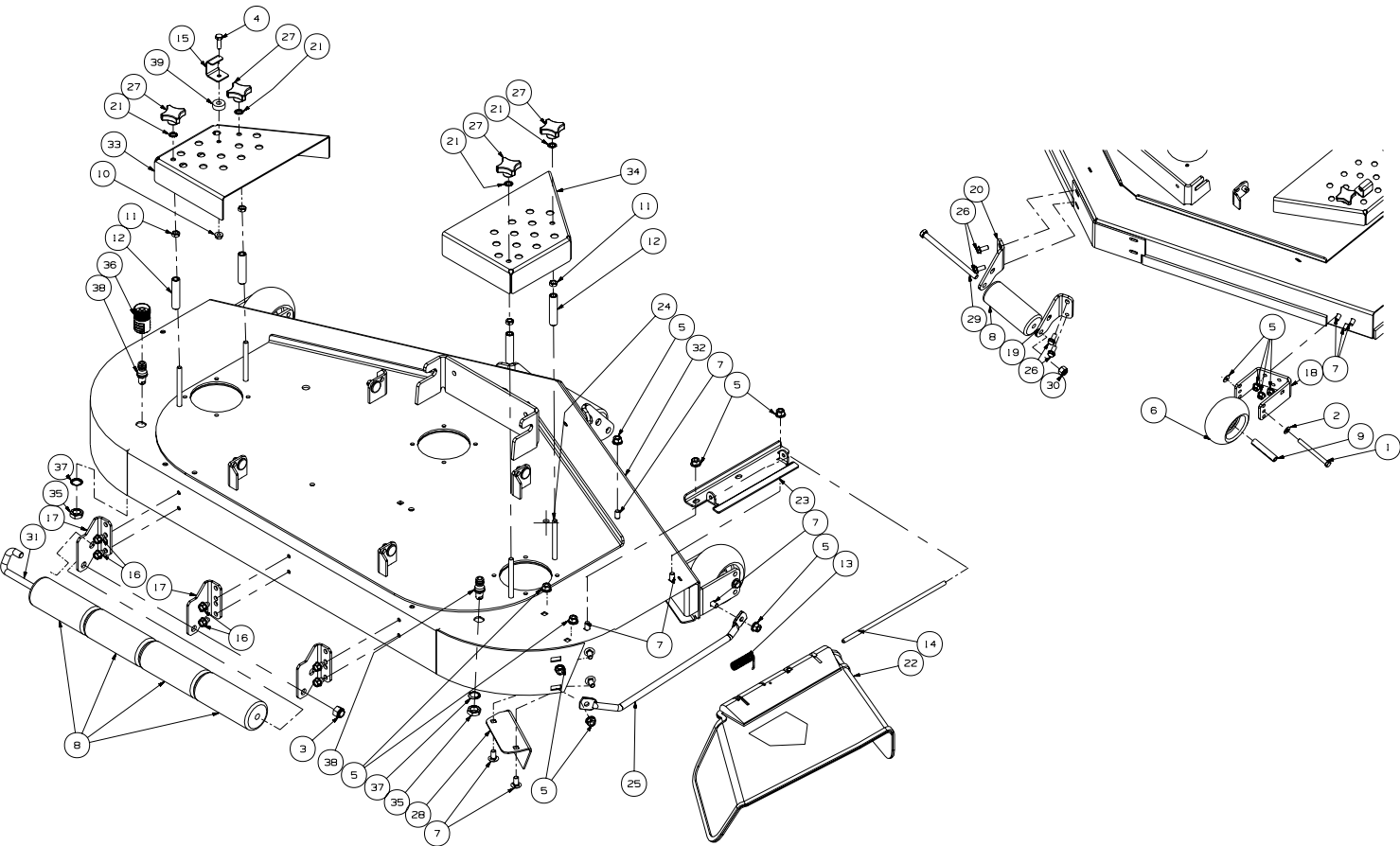
Left Hand Spindle Assembly:

Ref. Number	Part Description	R/I Time	Model 44"	Model 48"	Model 54"
NOTE: The Following Times Do Not Include Deck R&I of 0.5.					
34	Spindle Spacer			X	
27	Spindle Bolt	0.3		X	
31	Spindle Assembly			X	
36	Spindle Pulley			X	

Right Hand Spindle Assembly:

Ref. Number	Part Description	R/I Time	Model 44"	Model 48"	Model 54"
NOTE: The Following Times Do Not Include Deck R&I of 0.5.					
34	Spindle Spacer			X	
27	Spindle Bolt	0.3		X	
31	Spindle Assembly			X	
36	Spindle Pulley			X	

54" Fabricated Cutter Deck - Figure 6



GD: 02002511-03/22/07

54" Fabricated Cutter Deck- Figure 6

Flat Rate Guide

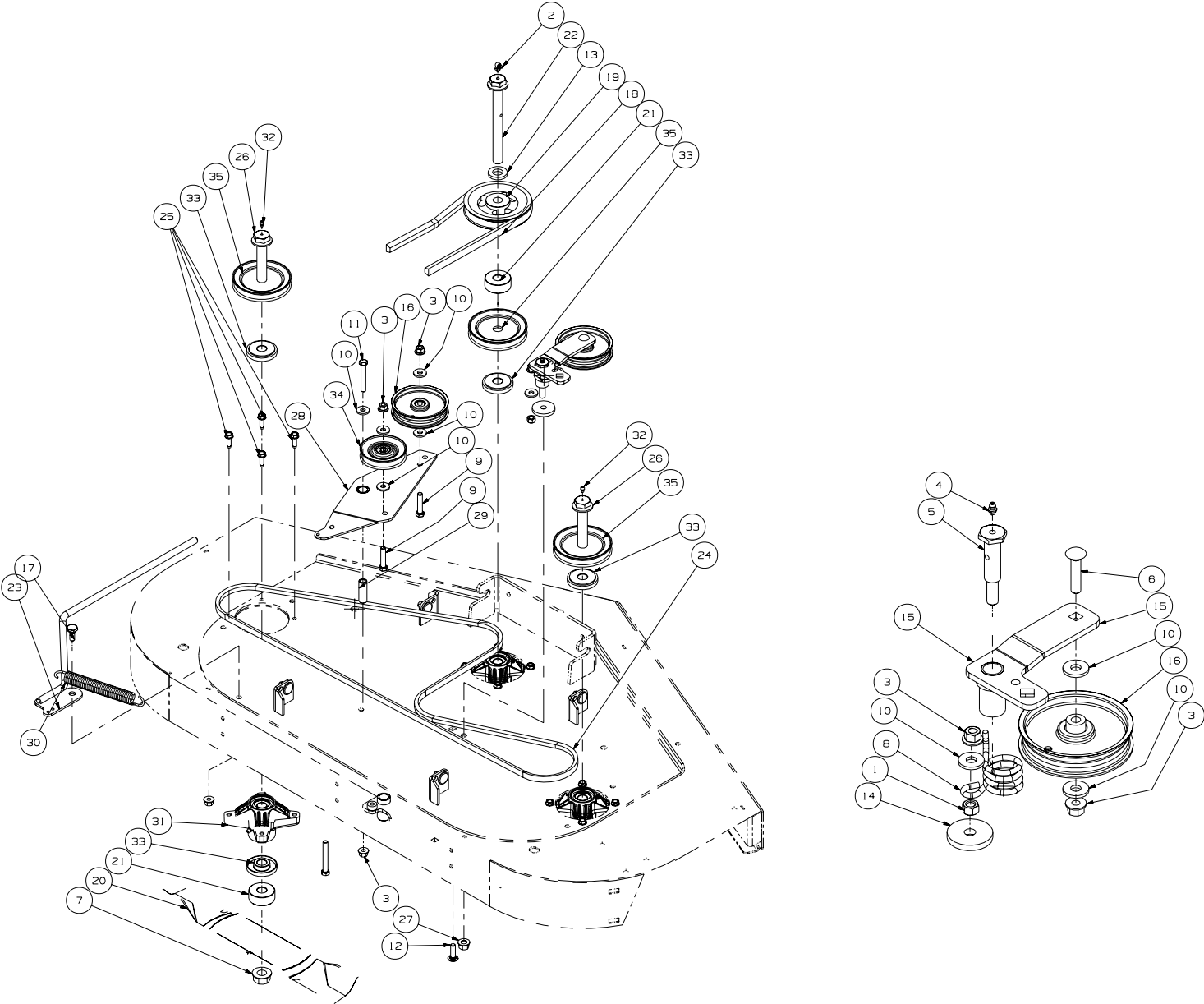
54" Fabricated Cutter Deck:

Ref. Number	Part Description	R/I Time	Model 44"	Model 48"	Model 54"
NOTE: The Following Times Do Not Include Deck R&I.					
13	Torsion Spring				X
14	Chute Deflector Rod				X
22	Deflector Chute	0.1			X
23	Deflector Chute Bracket				X
25	Deck Finger Guard				X
15	Stop Bracket				X
27	Plastic Knob	0.1			X
33	LH Belt Cover				X
39	Spacer				X
27	Plastic Knob	0.1			X
34	RH Belt Cover				X
28	Chute Bracket	0.1			X
38	Deck Water Nozzle	0.1			X
6	Ball Wheel (Both Sides)				X
9	Wheel Spacer (Both Sides)	0.2			X
18	Front Anti-Scalp Wheel Mount Bracket (Both Sides)				X
8	Front Roller				X
19	LH Front Roller Bracket	0.2			X
20	RH Front Roller Bracket				X
8	Rear Rollers				X
17	Deck Roller Mount Bracket	0.2			X
31	J-Hook				X

Item Not Shown:

Ref. Number	Part Description	R/I Time	Model 44"	Model 48"	Model 54"
N/S	Deck Removal & Installation	0.5			X

54" Fabricated Deck Spindle Assembly- Figure 7



GD: 02002510-03/30/07

54" Fabricated Deck Spindle Assembly

Flat Rate Guide

-Figure 7

54" Fabricated Deck Spindle Assembly:

Ref. Number	Part Description	R/I Time	Model 44"	Model 48"	Model 54"
NOTE: The Following Times Do Not Include Deck R&I of 0.5.					
18	PTO Belt	0.1			X
7 & 20	Nut & Blade (Each)	0.1			X
21 & 33	Spacer & Spindle Spacer (Each)				X
16 & 34	Flat Idler Pulley & V Idler Pulley (Each)	0.1			X
17	Shoulder Bolt				X
23	Spring Tension Rod Assembly	0.1			X
30	Extension Spring				X
24	Deck Belt	0.1			X
5	Shoulder Bolt				X
15	Idler Arm Assembly	0.3			X
16	Flat Idler Pulley				X
8	Idler Torsion Spring				X

Center Spindle Assembly:

Ref. Number	Part Description	R/I Time	Model 44"	Model 48"	Model 54"
NOTE: The Following Times Do Not Include Deck R&I of 0.5.					
21 & 33	Spacer & Spindle Spacer				X
22	Center Spindle Bolt	0.3			X
19 & 35	Cast V Pulley & Spindle Pulley				X
31	Center Spindle Assembly				X

Left Hand Spindle Assembly:

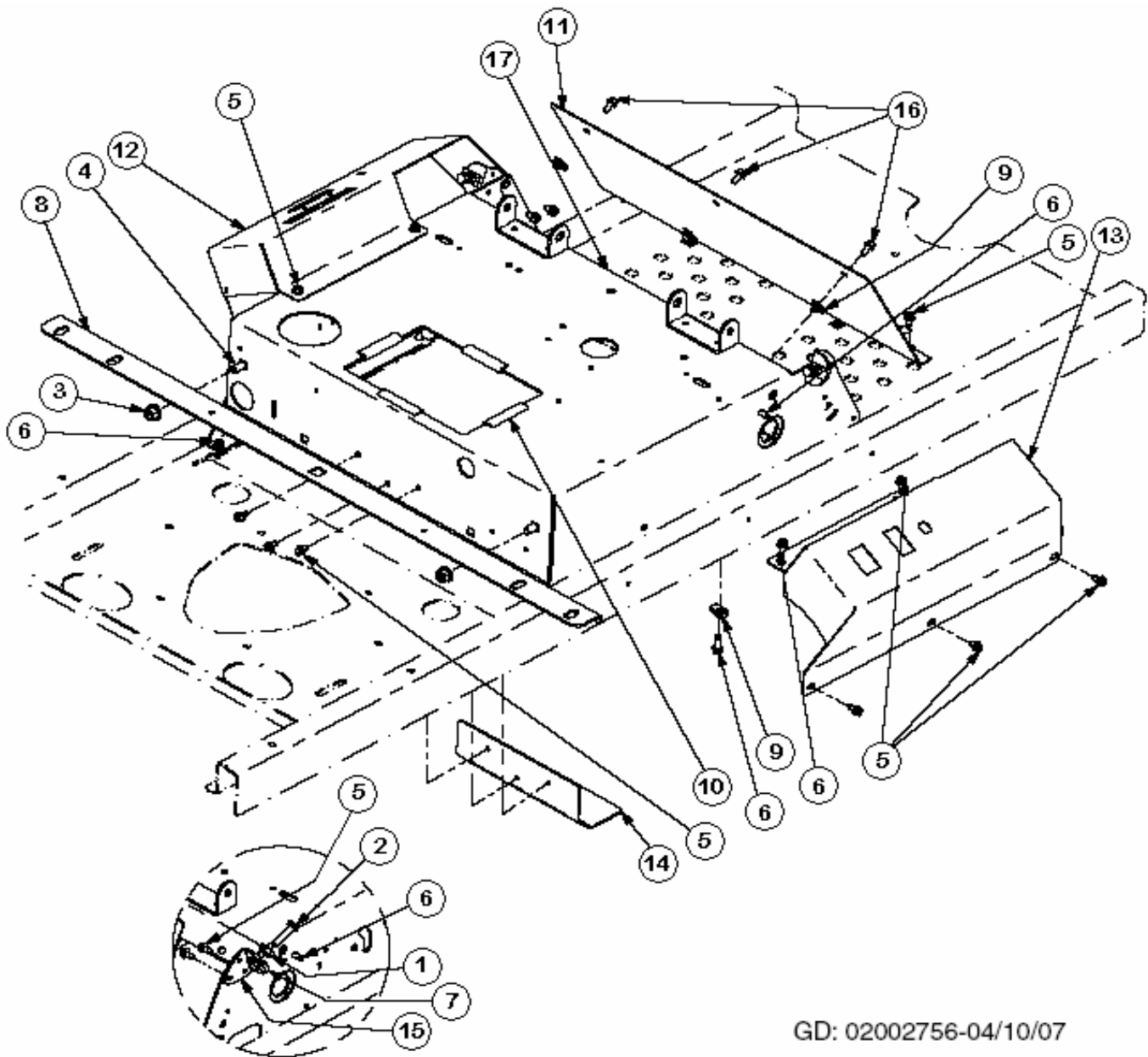
Ref. Number	Part Description	R/I Time	Model 44"	Model 48"	Model 54"
NOTE: The Following Times Do Not Include Deck R&I of 0.5.					
33	Spindle Spacer				X
26	Spindle Bolt	0.3			X
31	Spindle Assembly				X
35	Spindle Pulley				X

Right Hand Spindle Assembly:

Ref. Number	Part Description	R/I Time	Model 44"	Model 48"	Model 54"
NOTE: The Following Times Do Not Include Deck R&I of 0.5.					
33	Spacer & Spindle Spacer				X
26	Spindle Bolt	0.3			X
31	Spindle Assembly				X
35	Spindle Pulley				X

Control Assembly-Figure 8

Flat Rate Guide

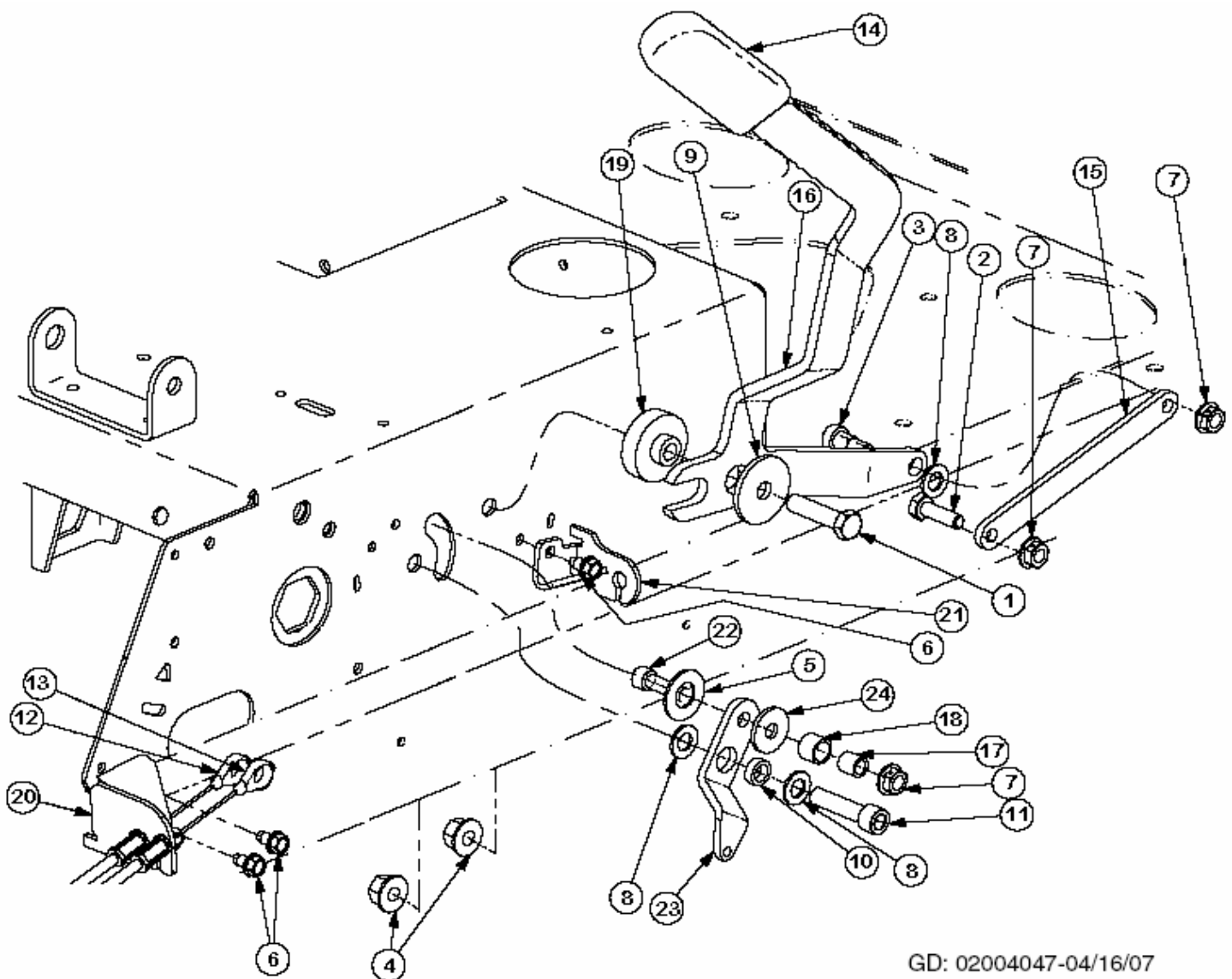


Control Assembly:

Ref. Number	Part Description	R/I Time	Model 44"	Model 48"	Model 54"
11	Front Panel	0.2	X	X	X
8	Front Tank Mounting Bracket	0.3	X	X	X
14	Battery Bracket	0.3	X	X	X
15	Forward/Reverse Stop Bracket	0.4	X	X	X
12	Left Hand Control Console	0.5	X	X	X
13	Right Hand Control Console	0.5	X	X	X

Brake Assembly-Figure 9

Flat Rate Guide



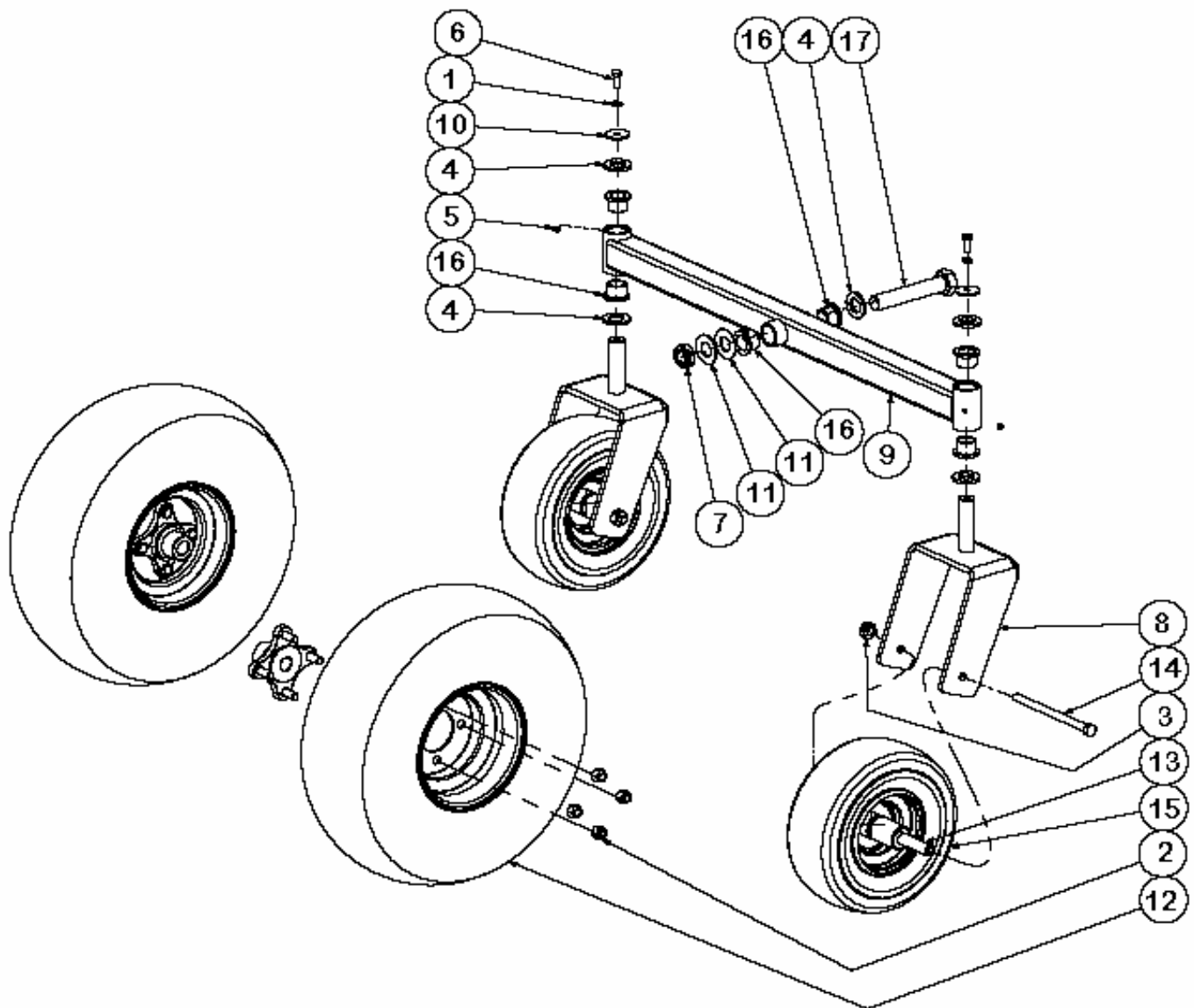
GD: 02004047-04/16/07

Brake Assembly:

Ref. Number	Part Description	R/I Time	Model 44"	Model 48"	Model 54"
14	Parking Brake Grip	0.1	X	X	X
3	Shoulder Bolt		X	X	X
15	Brake Link Plate		X	X	X
16	Brake Handle	0.6	X	X	X
17 & 18	Spacer's		X	X	X
19	Step Hub		X	X	X
23	Lockout Lever Plate		X	X	X
12 & 13	Left Hand Brake Cable & Right Hand Brake Cable	0.5	X	X	X
20 & 21	Brake Cable Mounting Brackets		X	X	X

44"/48" Front Caster/ Tire Assembly-Figure 10

Flat Rate Guide



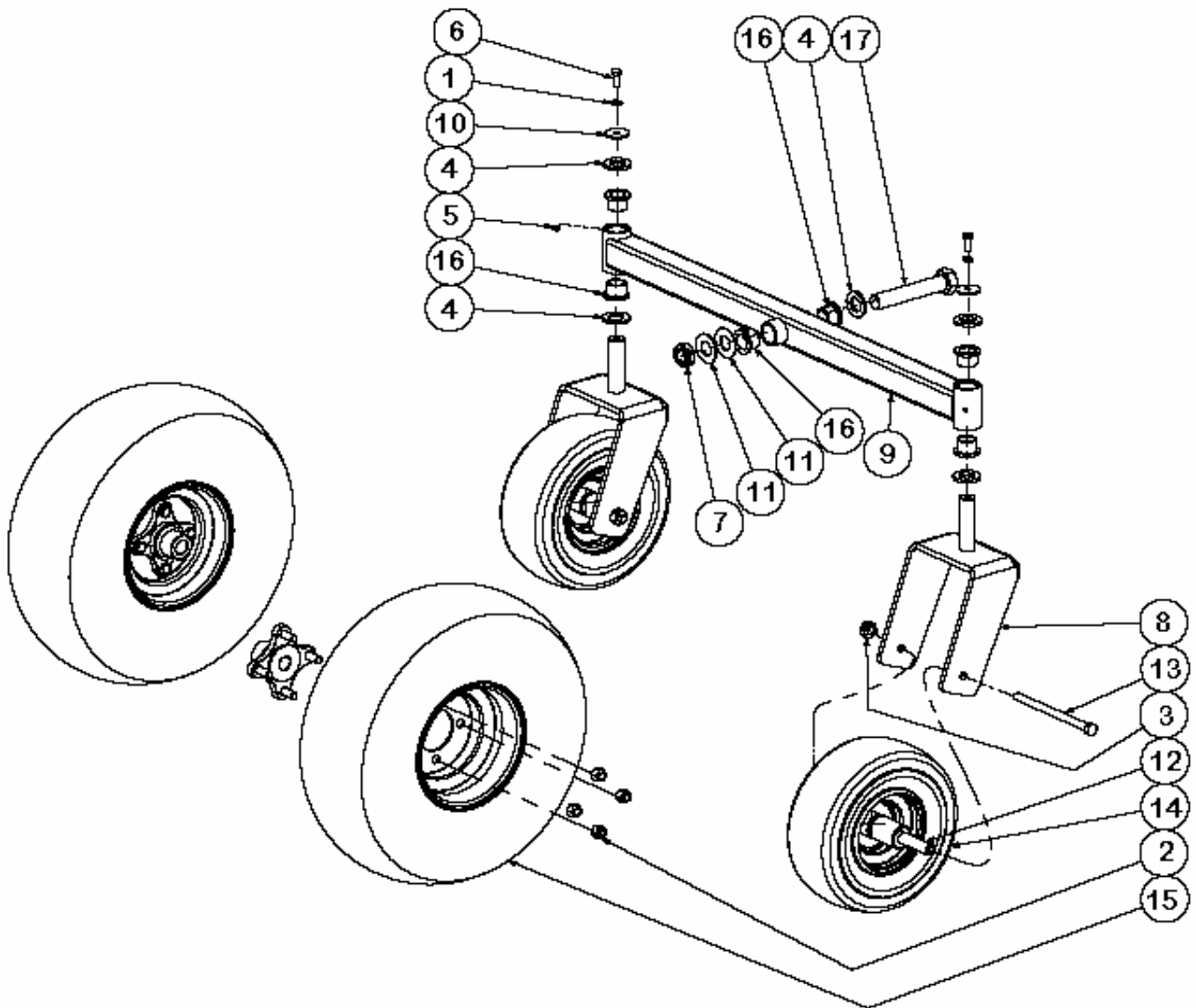
GD: 02003714-03/22/07

44" & 48" Front Caster & Tire Assembly:

Ref. Number	Part Description	R/I Time	Model 44"	Model 48"	Model 54"
2	Lug Nuts	0.1	X	X	
12	Rear Wheel Assembly		X	X	
13	Wheel Spacer	0.1	X	X	
15	Front Caster Wheel Assembly		X	X	
8	Caster Wheel Mounting Bracket (Per Side)	0.2	X	X	
16	Flange Bearing (Per Side)		X	X	
NOTE: <i>The Following Time Includes The Above Procedures</i>					
4	Special Washer	0.6	X	X	
9	Front Axle Assembly		X	X	
16	Flange Bearing		X	X	

54" Front Caster/

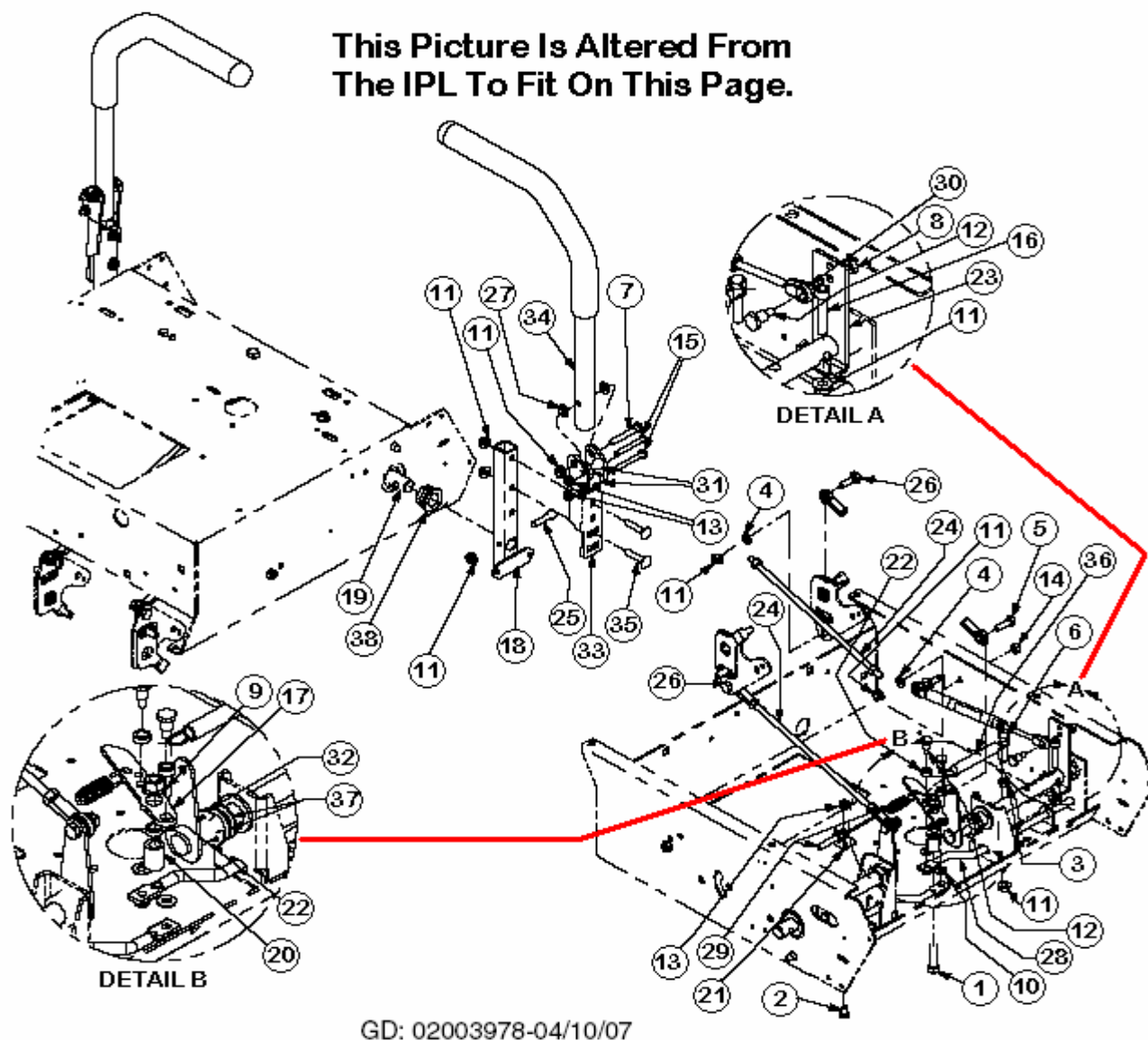
Flat Rate Guide



GD: 02003714-03/22/07

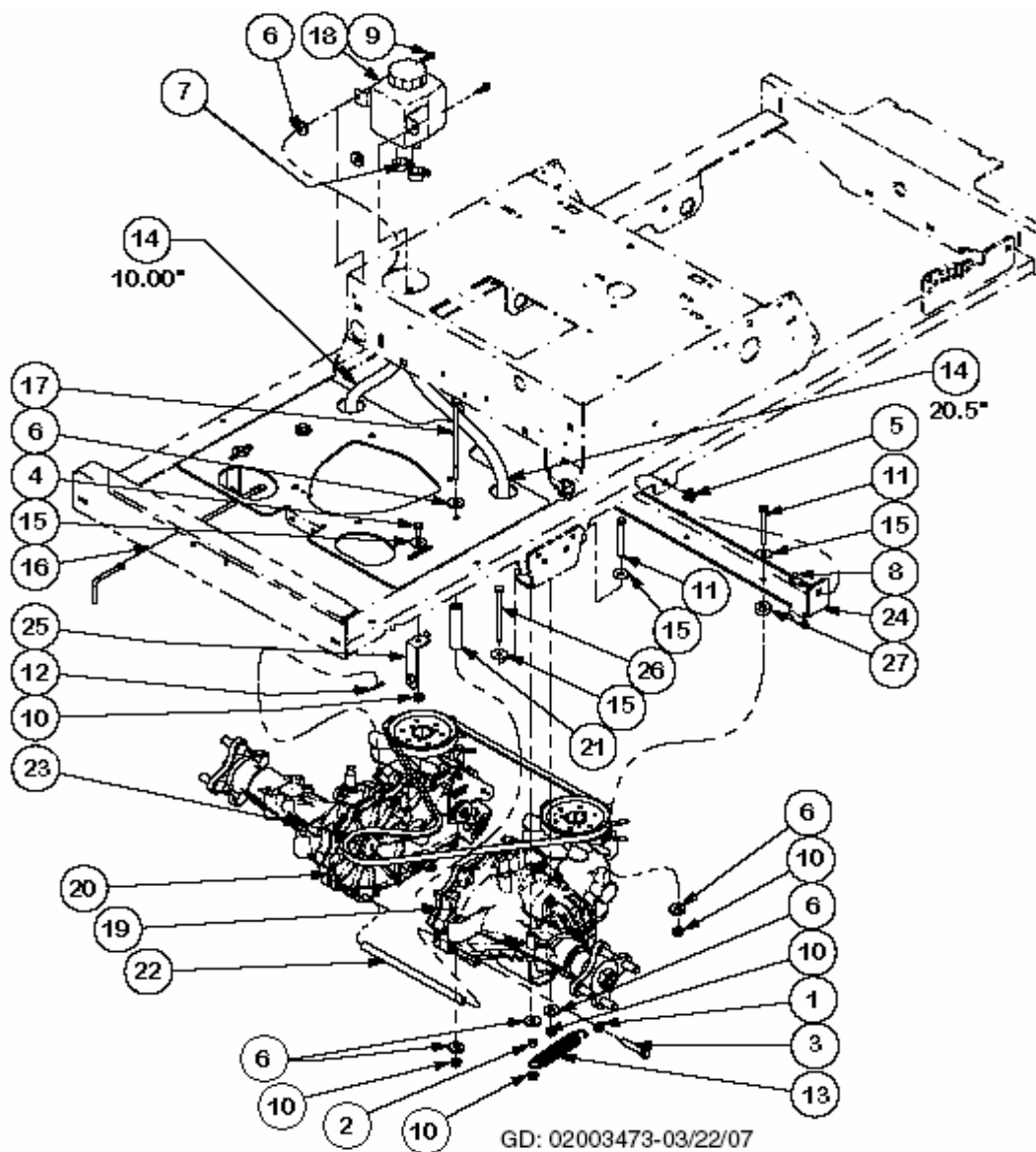
54" Front Caster & Tire Assembly:

Ref. Number	Part Description	R/I Time	Model 44"	Model 48"	Model 54"
2	Lug Nuts	0.1			X
15	Rear Wheel Assembly				
12	Wheel Spacer	0.1			X
14	Front Caster Wheel Assembly				X
8	Caster Wheel Mounting Bracket (Per Side)	0.2			X
16	Flange Bearing (Per Side)				X
NOTE: <i>The Following Time Includes The Above Procedures</i>					
4	Special Washer	0.6			X
9	Front Axle Assembly				X
16	Flange Bearing				X



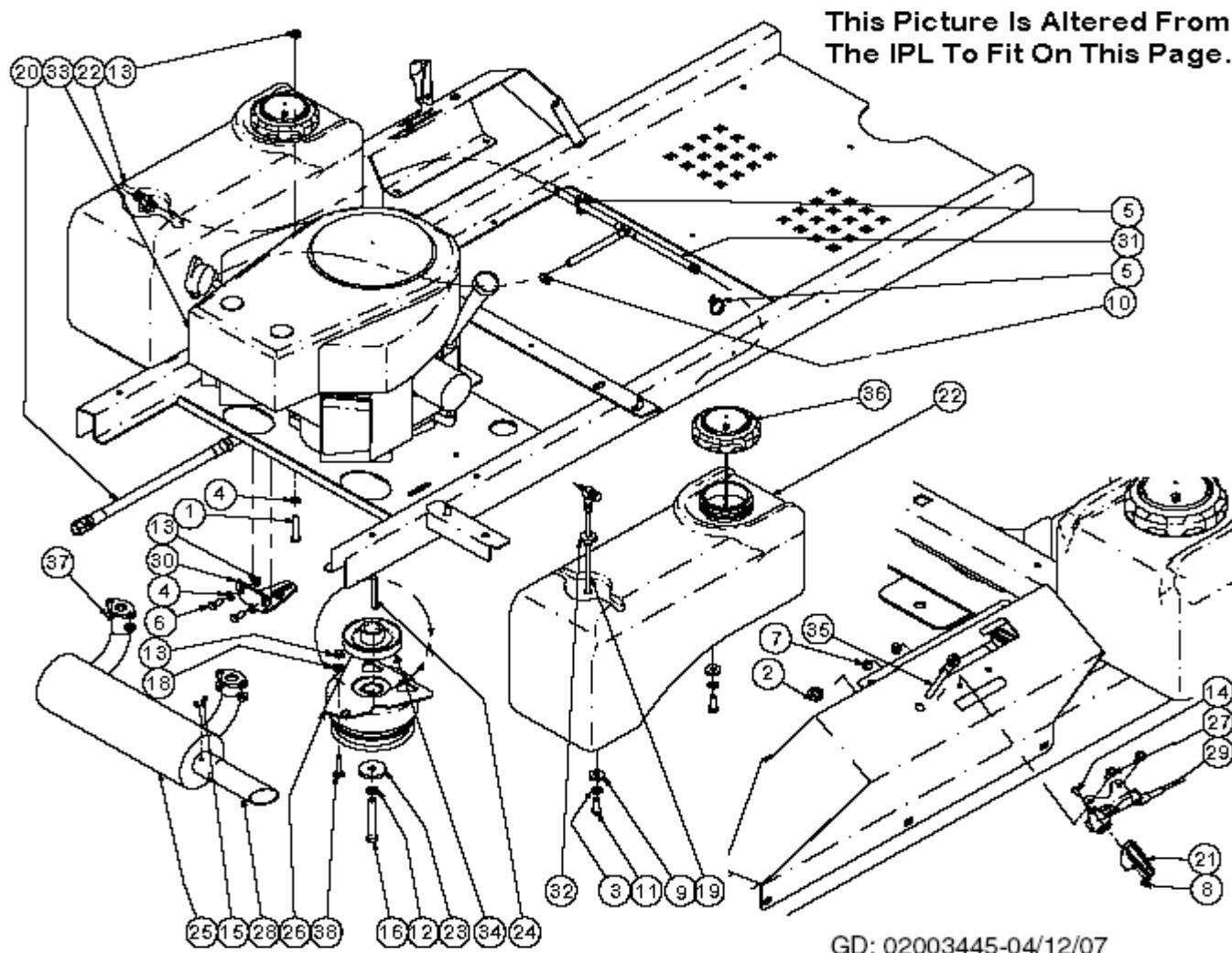
54" Front Caster & Tire Assembly:

Ref. Number	Part Description	R/I Time	Model 44"	Model 48"	Model 54"
34	Lapbar Assemblies	0.1	X	X	X
18	Pivot Bracket Weldment (Per Side)		X	X	X
31 & 33	Spacer & Lapbar Pivot Bracket (Per Side)	0.3	X	X	X
38	Hex Flange Bearing (Per Side)		X	X	X
NOTE: The Following Times Do Not Include Deck R&I.					
30	Return To Neutral Cylinder	0.3	X	X	X
36	Extension Spring	0.3	X	X	X
24	Steering Link Rod (Each)	0.3	X	X	X
21	Brake Cable Mounting Bracket	0.4	X	X	X
29	Lock Out Control Cable		X	X	X
17	Brake Lever Plate		X	X	X
20 & 22	Spacers	0.6	X	X	X
28	Control Lock Rods		X	X	X
19	Steering Input Shaft Assembly	1.2	X	X	X
23	Damper Mounting Bracket		X	X	X



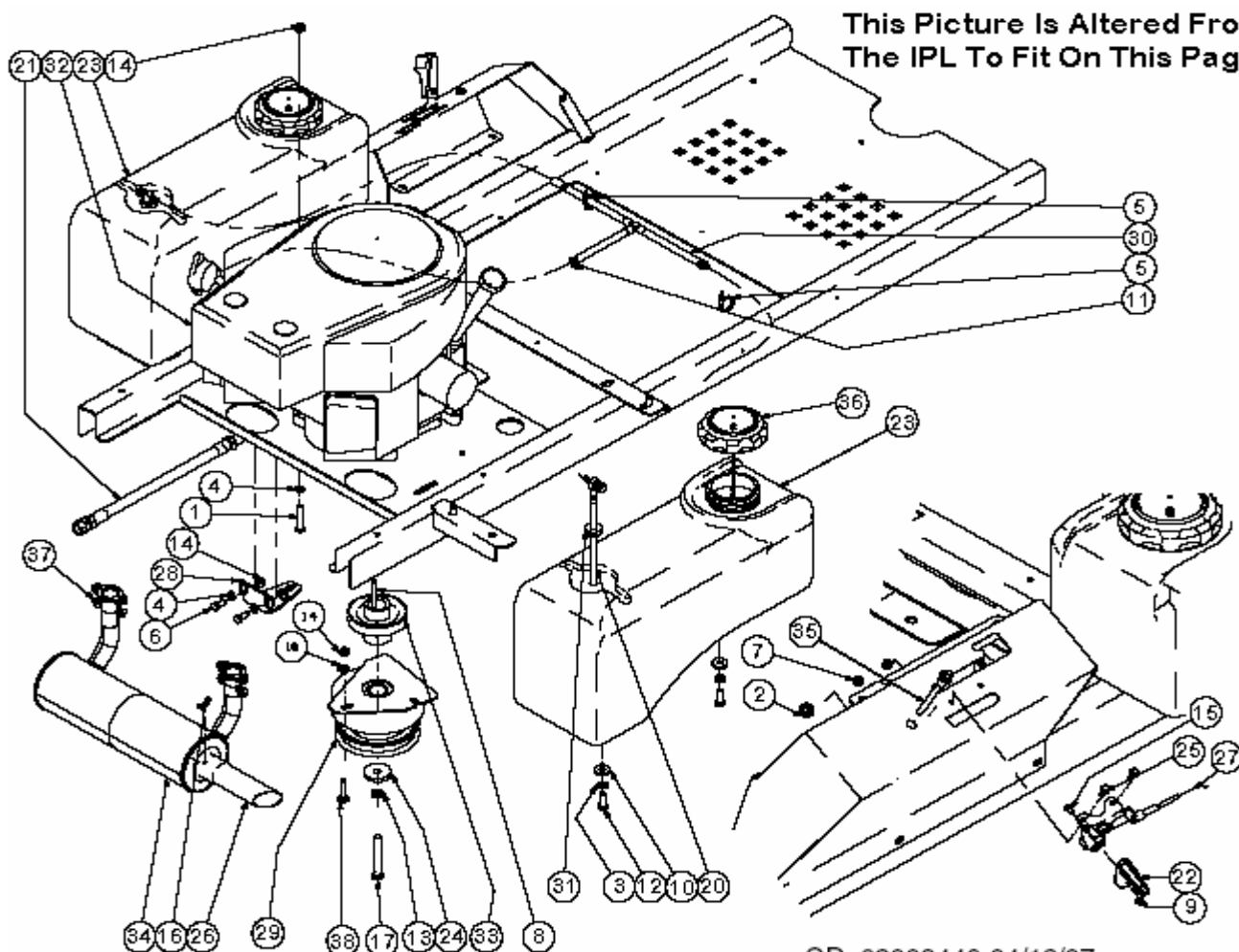
Drive Train Assembly:

Ref. Number	Part Description	R/I Time	Model 44"	Model 48"	Model 54"
13	Extension Springs	0.1	X	X	X
16	Pump Rod	0.1	X	X	X
25	Neutral Bracket	0.1	X	X	X
23	Trans Belt	0.5	X	X	X
NOTE: The Following Times Do Not Include Deck R&I.					
24	Transmission Front Mounting Bracket	0.7	X	X	X
7	Hose Clamps	0.8	X	X	X
18	Hydraulic Tank		X	X	X
NOTE: The Following Times Include Deck & Rear Wheel R&I.					
19	IZT Transmission, Right Hand	1.4	X	X	X
20	IZT Transmission, Left Hand	1.4	X	X	X



19HP Kawasaki Engine Assembly:

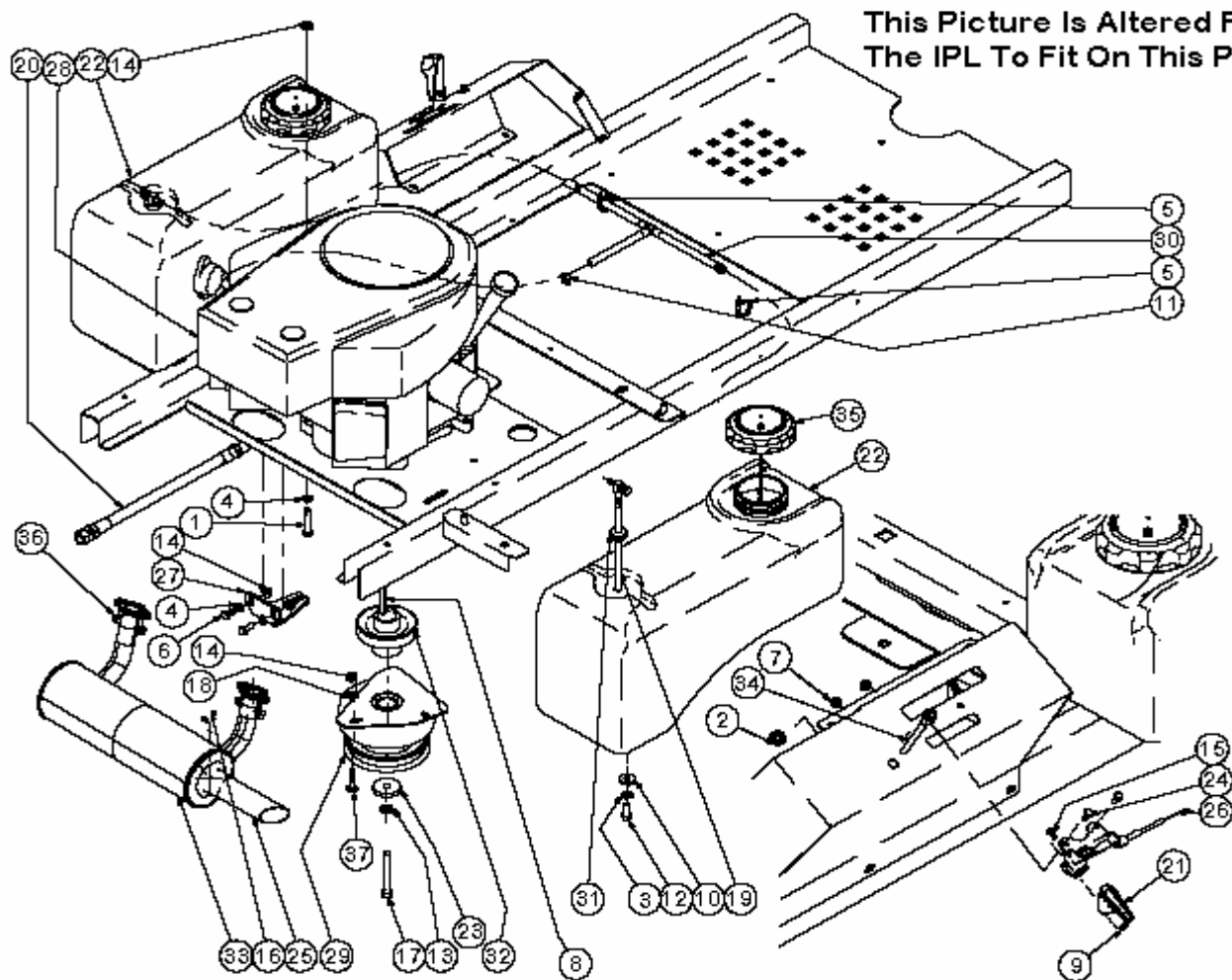
Ref. Number	Part Description	R/I Time	Model 44"	Model 48"	Model 54"
20	Oil Drain Extension Hose	0.1	X		
28	Exhaust Pipe	0.1	X		
36	Fuel Cap	0.1	X		
10 & 31	Hose Clamp & Fuel Hose Assembly		X		
19	Fuel Pickup Fitting	0.2	X		
32	Fuel Tank Grommet		X		
21 & 29	Throttle Control Knob & Throttle Control Cable	0.2	X		
35	Choke Cable	0.2	X		
22	Fuel Tank (Each)	0.3	X		
25	Kawasaki Muffler	0.3	X		
NOTE: The Following Times Do Not Include Deck R&I.					
12,16,23	Lock Washer, Bolt, Flat Washer		X		
24 & 26	Key & Ogura P.T.O. Clutch	0.5	X		
30	Clutch Retainer Assembly		X		
34	Transmission Drive Pulley		X		
33	19HP Kawasaki Engine	2.0	X		



GD: 02003446-04/12/07

21HP Kawasaki Engine Assembly:

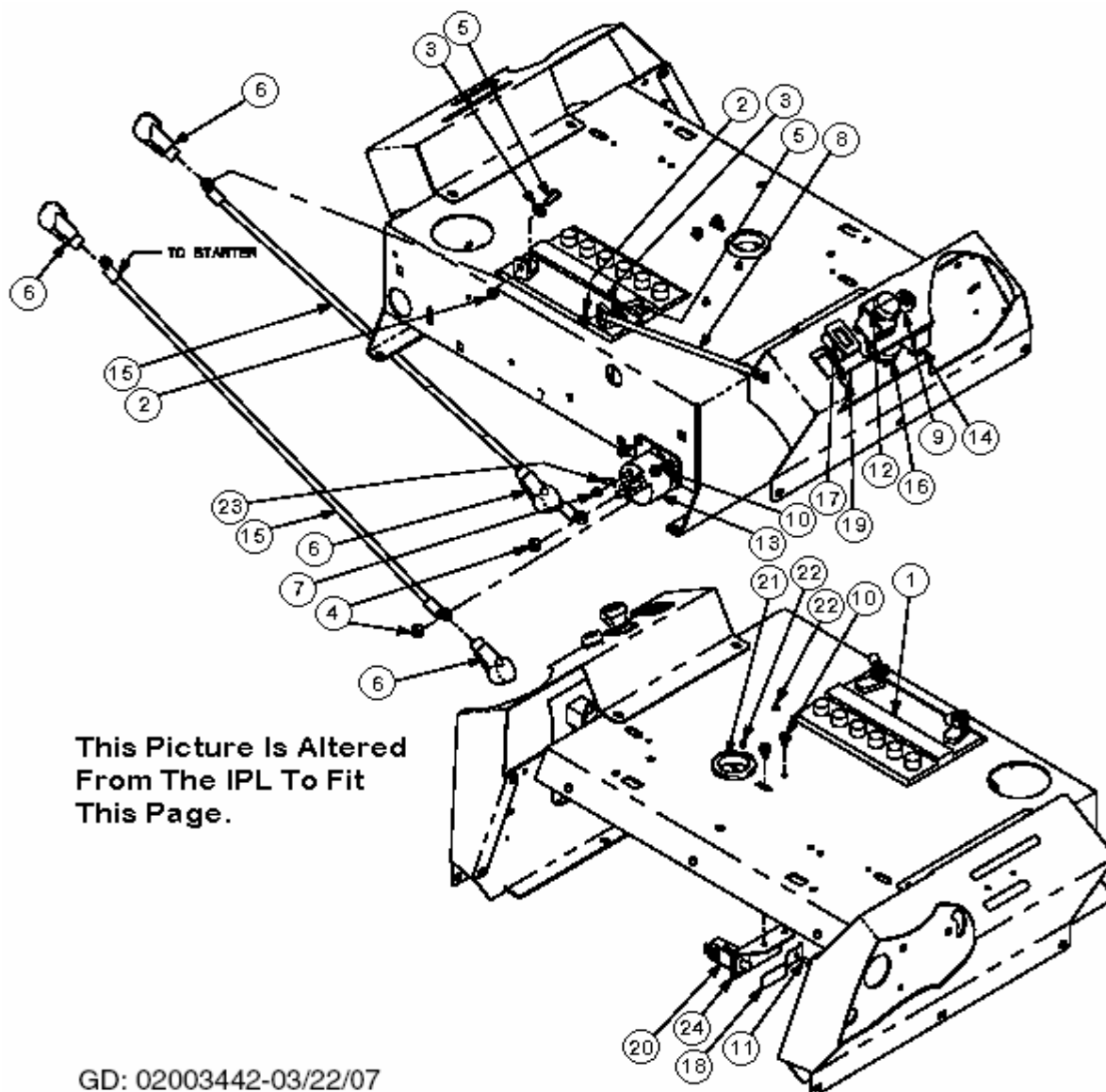
Ref. Number	Part Description	R/I Time	Model 44"	Model 48"	Model 54"
21	Oil Drain Extension Hose	0.1		X	
26	Exhaust Pipe	0.1		X	
36	Fuel Cap	0.1		X	
11 & 30	Hose Clamp & Fuel Hose Assembly			X	
20	Fuel Pickup Fitting	0.2		X	
31	Fuel Tank Grommet			X	
22 & 27	Throttle Control Knob & Throttle Control Cable	0.2		X	
35	Choke Cable	0.2		X	
23	Fuel Tank (Each)	0.3		X	
34	Kawasaki Muffler	0.3		X	
NOTE: The Following Times Do Not Include Deck R&I.					
13,17,24	Lock Washer, Bolt, Flat Washer			X	
8 & 29	Key & Ogura P.T.O. Clutch	0.5		X	
28	Clutch Retainer Assembly			X	
33	Transmission Drive Pulley			X	
32	21HP Kawasaki Engine	2.0		X	



GD: 02002760-04/12/07

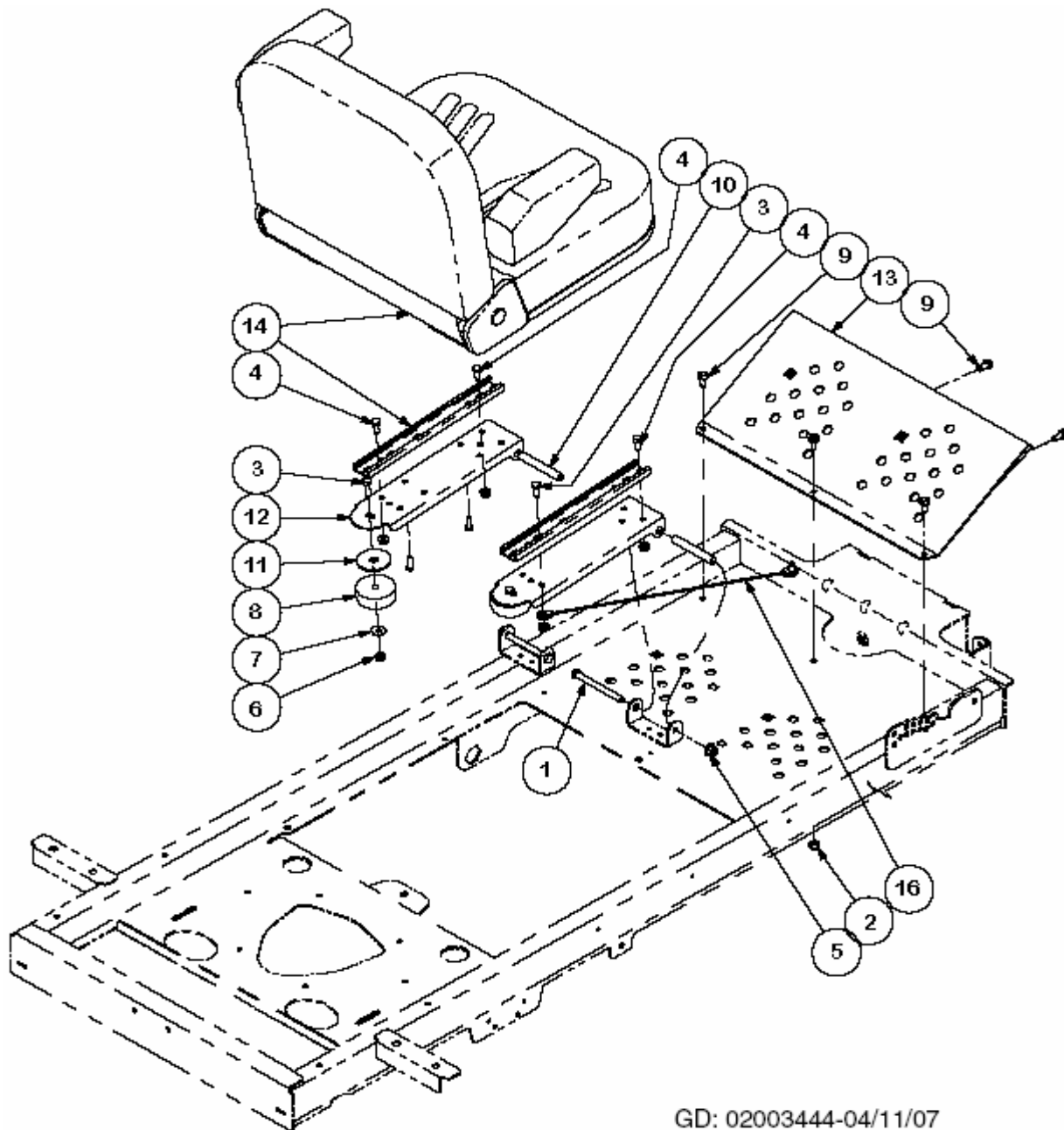
23HP Kawasaki Engine Assembly:

Ref. Number	Part Description	R/I Time	Model 44"	Model 48"	Model 54"
20	Oil Drain Extension Hose	0.1			X
25	Exhaust Pipe	0.1			X
35	Fuel Cap	0.1			X
11 & 30	Hose Clamp & Fuel Hose Assembly				X
19	Fuel Pickup Fitting	0.2			X
31	Fuel Tank Grommet				X
21 & 26	Throttle Control Knob & Throttle Control Cable	0.2			X
34	Choke Cable	0.2			X
22	Fuel Tank (Each)	0.3			X
33	Kawasaki Muffler	0.3			X
NOTE: The Following Times Do Not Include Deck R&I.					
13,17,23	Lock Washer, Bolt, Flat Washer				X
8 & 29	Key & Ogura P.T.O. Clutch	0.5			X
27	Clutch Retainer Assembly				X
32	Transmission Drive Pulley				X
28	21HP Kawasaki Engine	2.0			X



Electrical Assembly:

Ref. Number	Part Description	R/I Time	Model 44"	Model 48"	Model 54"
1	Battery	0.1	X	X	X
6,8,15	Boot, Black Battery Cable, Red Battery Cable	0.2	X	X	X
18	Safety Switch Retainer Spring		X	X	X
20	Safety Switch N.O./N.C.	0.3	X	X	X
24	Brake Switch Mounting Bracket		X	X	X
NOTE: The Following Times Include Right/Left Console R&I.					
12 & 19	Electric P.T.O. Switch & P.T.O. Switch Bracket	0.3	X	X	X
14	Relay	0.3	X	X	X
9 & 16	Nut W/Cap & Ignition Switch	0.3	X	X	X
17	Hour Meter	0.3	X	X	X
NOTE: The Following Time Includes All Items Needed For R&I.					
13	Solenoid	0.4	X	X	X

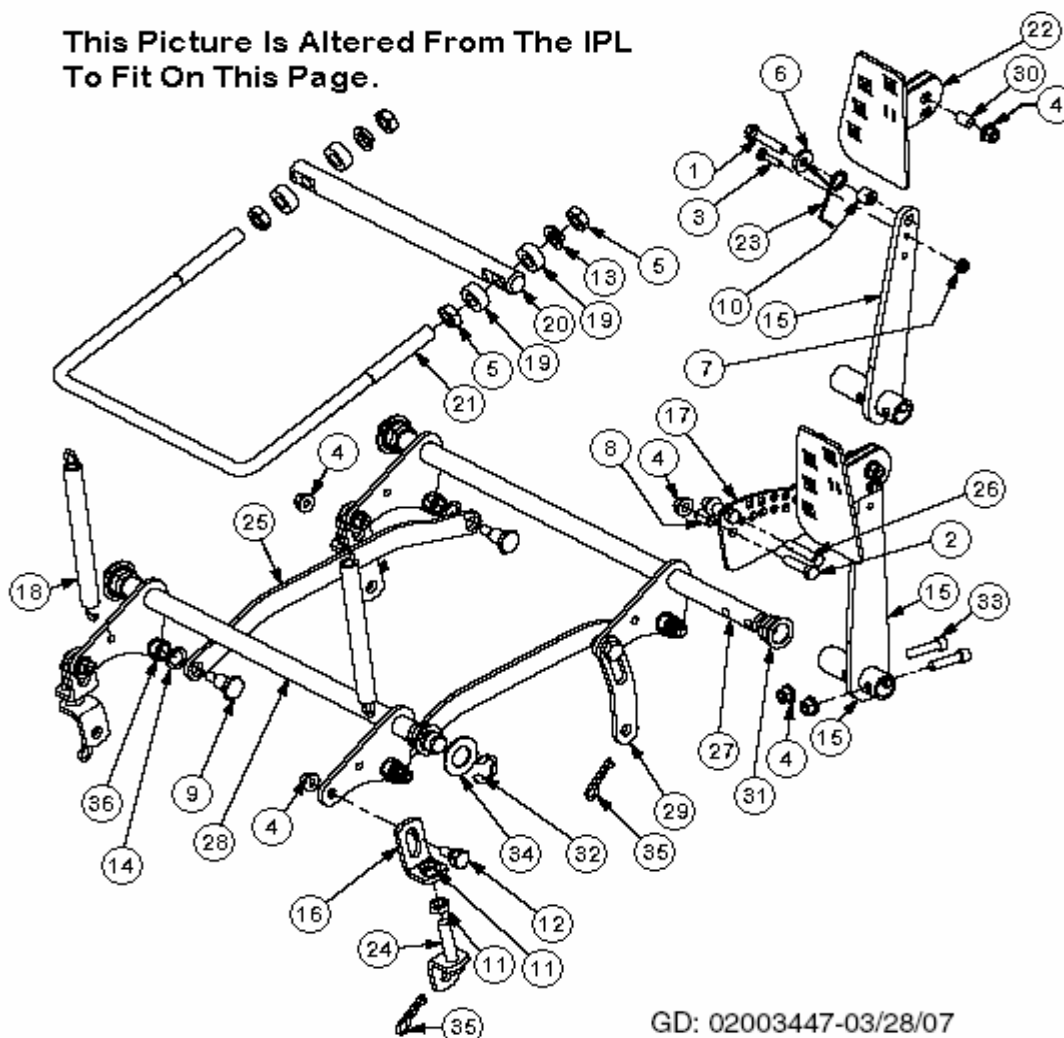


GD: 02003444-04/11/07

Seat Assembly:

Ref. Number	Part Description	R/I Time	Model 44"	Model 48"	Model 54"
16	Lift Cable	0.1	X	X	X
13	Foot Rest Bracket	0.2	X	X	X
8	Grommet	0.3	X	X	X
10	Spacer		X	X	X
12	Seat Mounting Bracket		X	X	X
14	Seat (Includes Seat Switch)		X	X	X

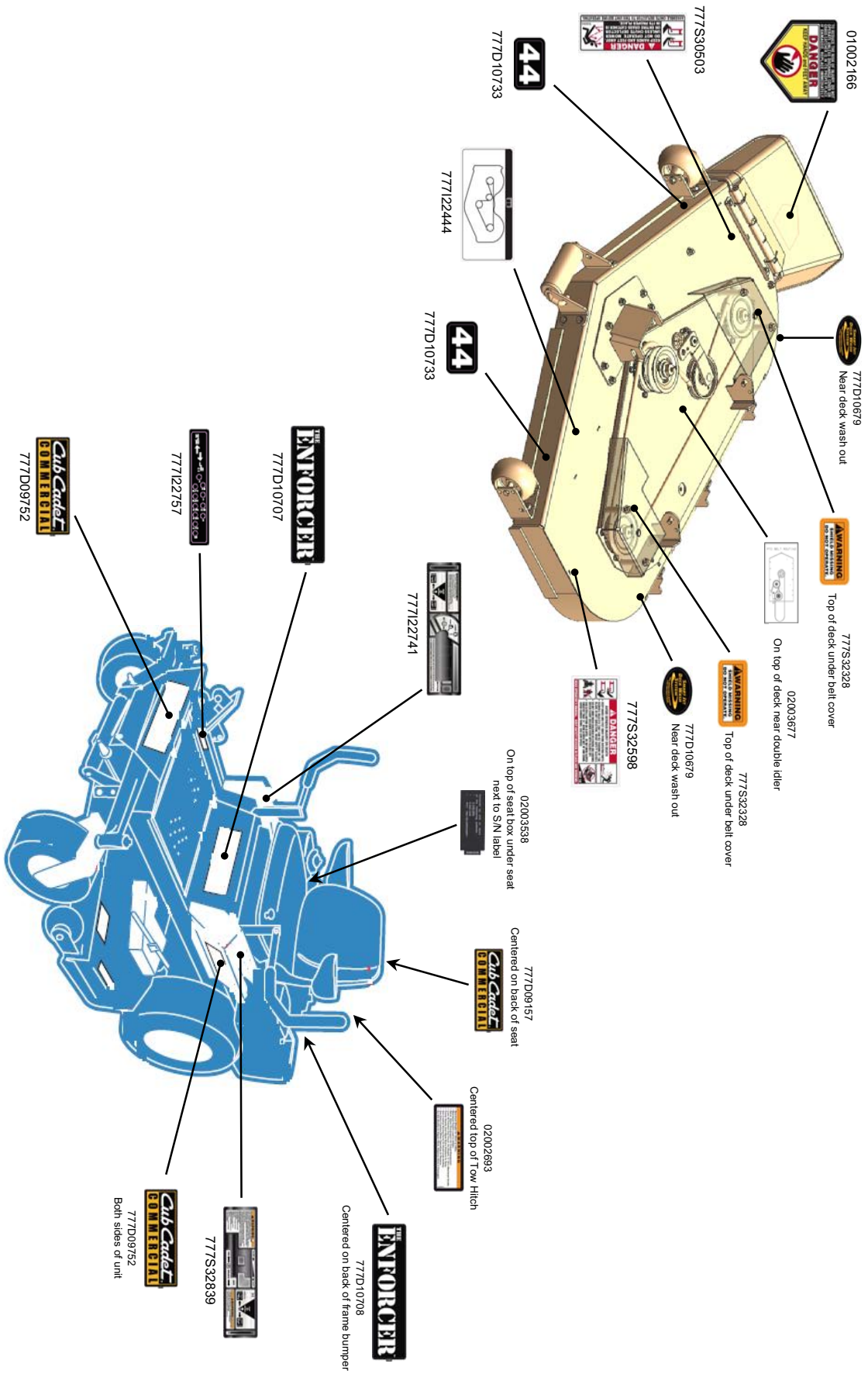
This Picture Is Altered From The IPL
To Fit On This Page.

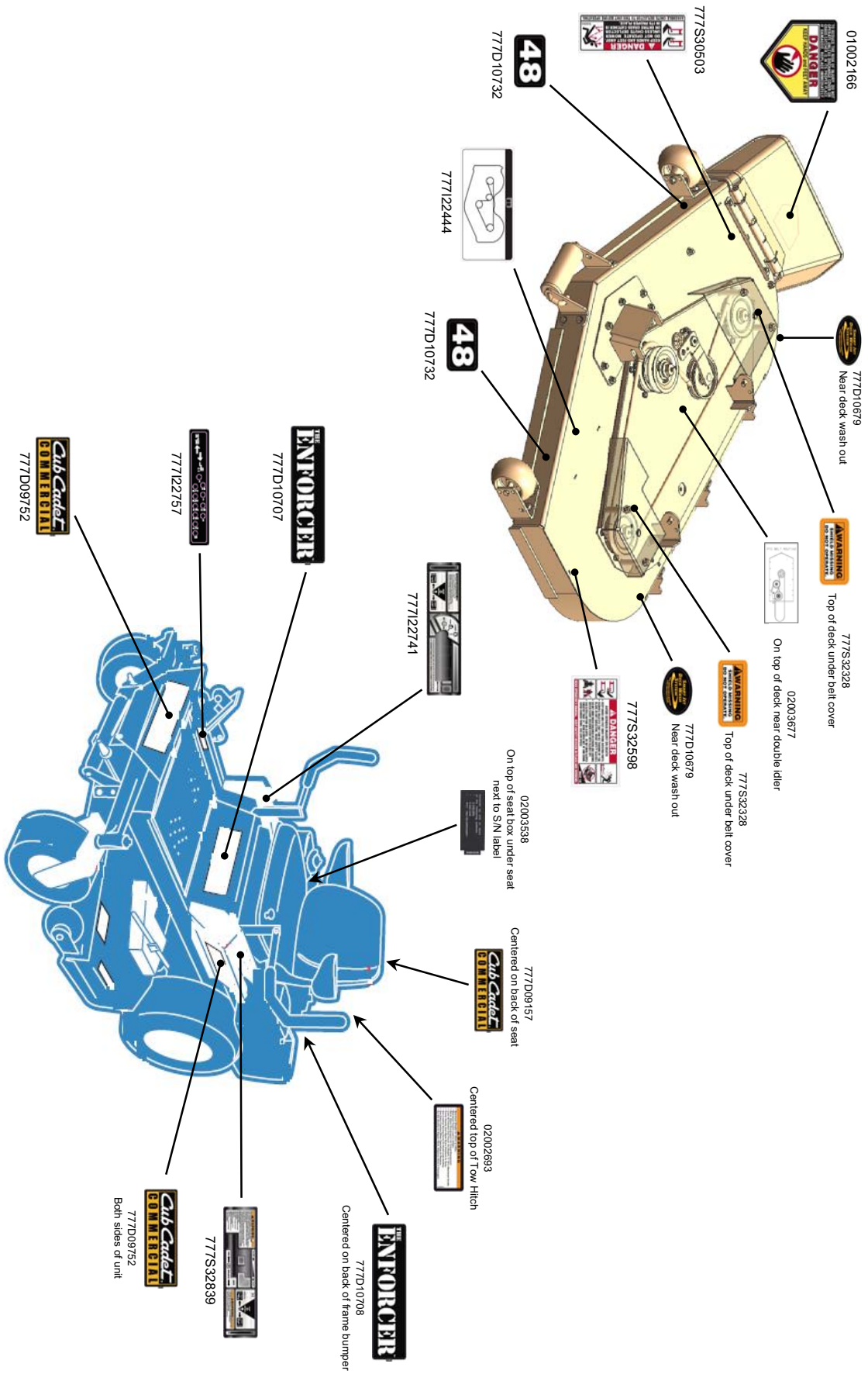


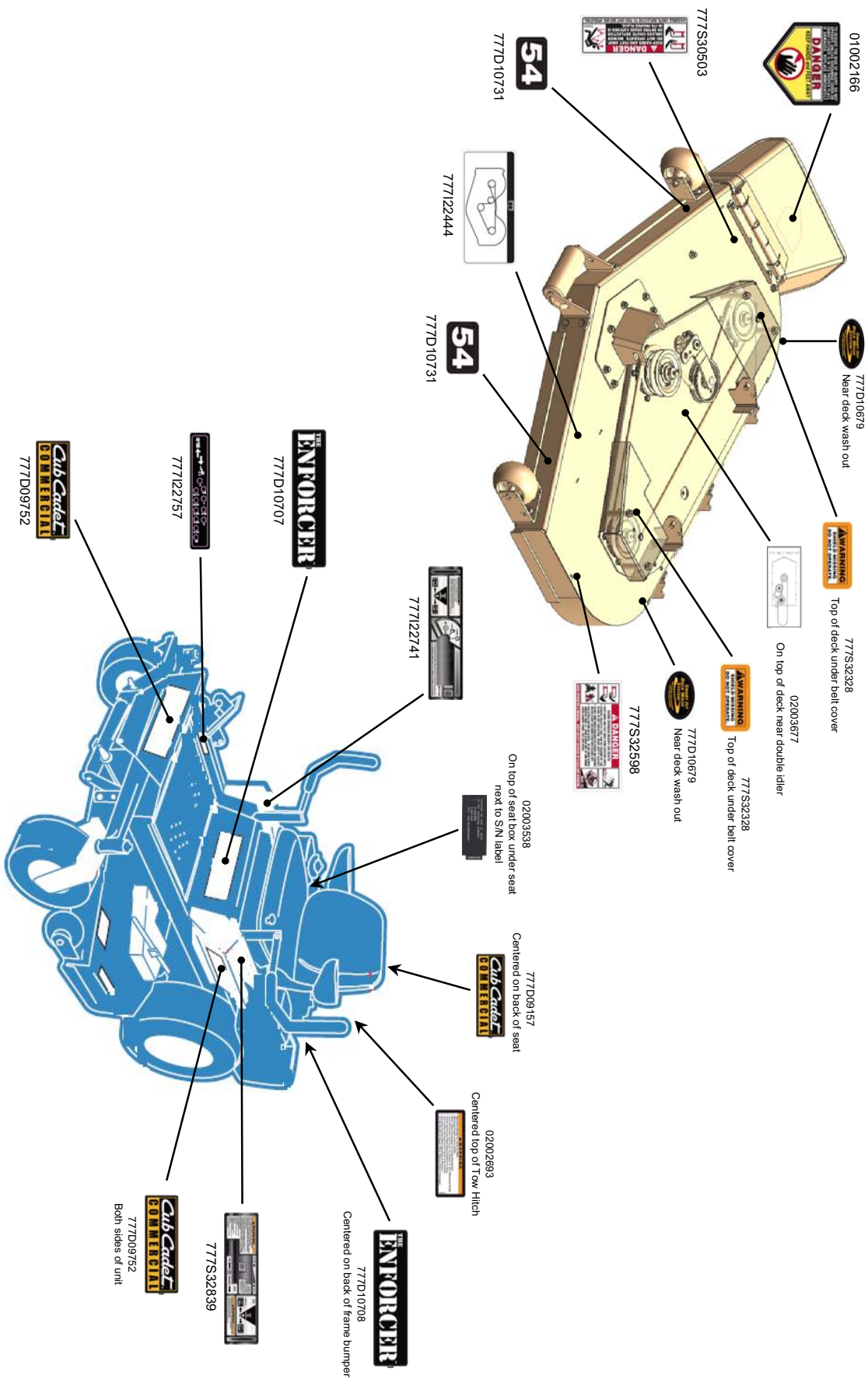
GD: 02003447-03/28/07

Lift Assembly:

Ref. Number	Part Description	R/I Time	Model 44"	Model 48"	Model 54"
NOTE: The Following Procedures Do Not Require Deck R&I.					
6	Idler Washer		X	X	X
10	Spacer	0.1	X	X	X
22	Foot Pedal Assembly				
23	Foot Lift Torsion Spring				
17	Index Plate	0.1			
15	Foot Lift Pivot Assembly	0.4	X	X	X
NOTE: The Following Times Do Not Include Deck R&I.					
18	Extension Spring (Each)	0.1	X	X	X
16	Deck Lift Bracket (Each)	0.1			
24	Lower Lift Bracket Assembly (Each)	0.1			
25	Lift Link (Each)	0.1			
29	Link Plate	0.1	X	X	X
19	Spacer		X	X	X
20	Trail Link Pivot Rod	0.2	X	X	X
21	Front Lift Rod		X	X	X
27 & 31	Front Shaft Assembly & Hex Flange Bearings	0.4	X	X	X
28 & 31	Rear Shaft Assembly & Hex Flange Bearings	0.4	X	X	X







FOR THE FOLLOWING PAGES 28-30**LABELS****44", 48", 54" Labels:**

Ref. Number	Part Description	R/I Time	Model 44"	Model 48"	Model 54"
N/S	Each Individual Label (NOTE 1)	0.2	X	X	X

NOTE 1: Time Includes Removal Of Old Label, Cleaning & Installation Of New Label.**Example:**

If a total of three (3) labels are replaced the total time would be 0.6



Cub Cadet LLC
P.O. Box 361131
Cleveland, OH 44136