

2022 JCB 86C



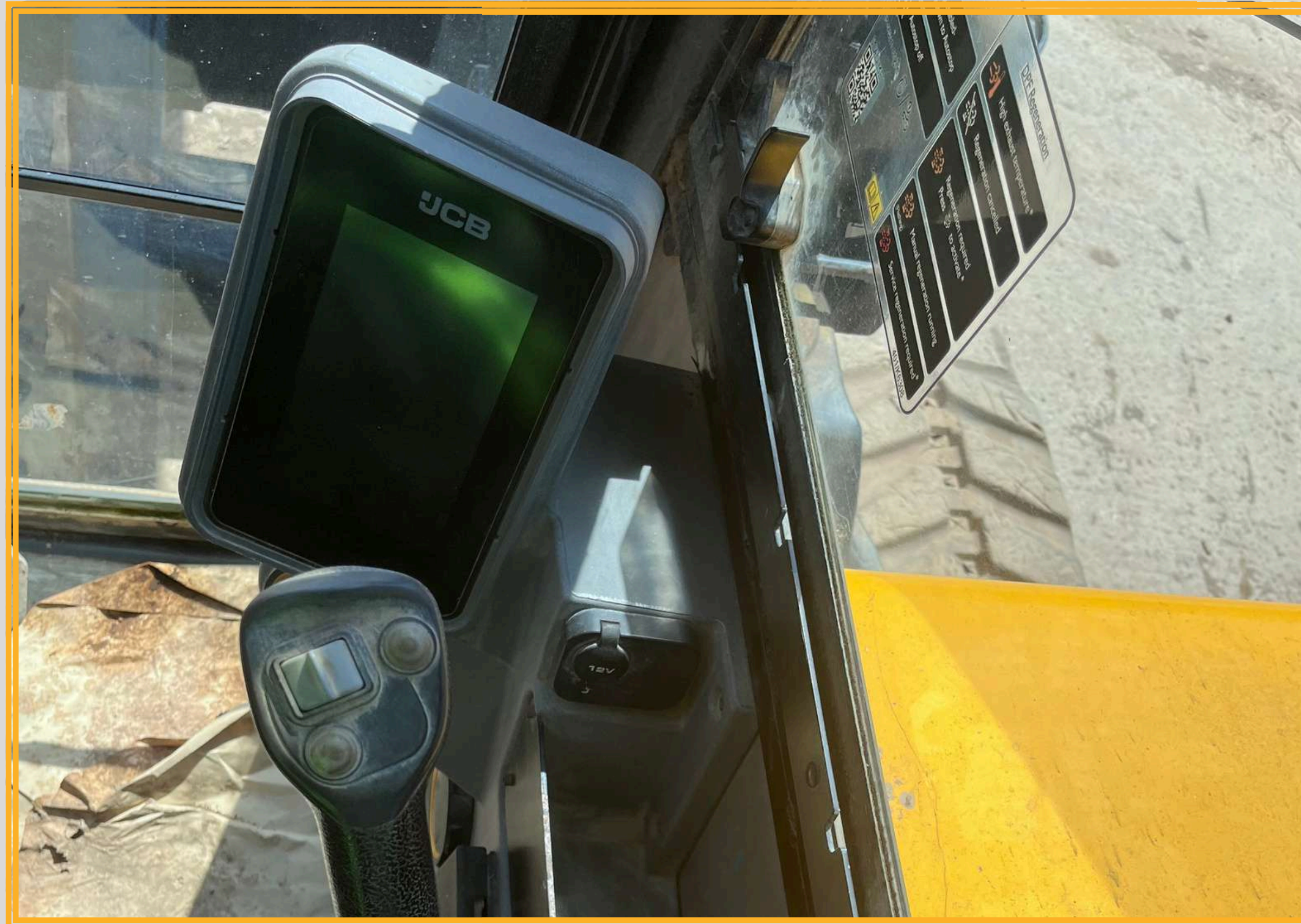
2199 Hours

- CAB WITH AIR CONDITION WITH LED LIGHTING & TOUGHENED GLASS
- TRACK MASTER PLUS RUBBER TRACKS
- ISO CONTROL PATTERN
- FABRIC SUSPENSION SEAT HIGH BACK
- DATATAG KIT
- BATTERY ISOLATOR & KEY IMMOBILISER
- 2250MM DIPPER
- STANDARD DOZER
- AMBER LED BEACON
- RADIO KIT
- LED LIGHTING FOR FOPS & CAB FRONT & REAR & BOOM
- EXTERIOR REAR VIEW MIRRORS
- REFUELLING PUMP
- HYDRAULIC QUICK HITCH
- SEAT BELT ENGAGED LED BEACON
- KEYPAD IMMOBILISER



USED MIDI EXCAVATOR | 2025 JCB 86C

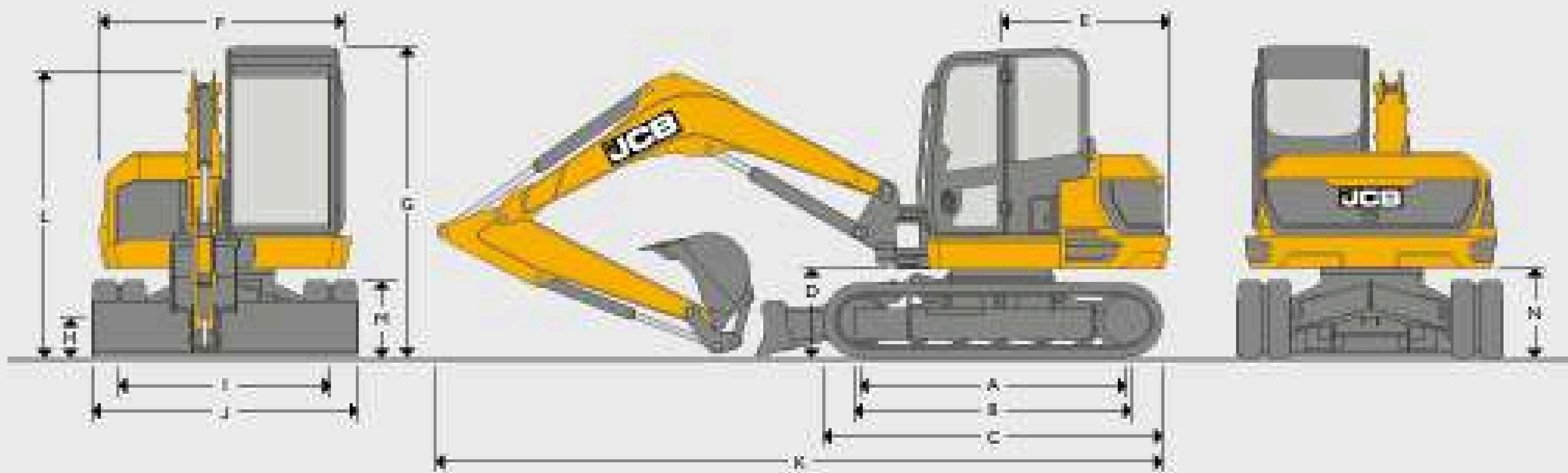
Our Ref: Serial No: 3177284



USED MIDI EXCAVATOR | 2022 JCB 86C

Our Ref: Serial No: 3177284

STATIC DIMENSIONS



Machine model	85z-2	86c-2	86c-2 TAB	90z-2	100c-2
A Sprocket idler centres			2325		
B Track length on ground			2325		
C Undercarriage overall length – rubber			2950		
Undercarriage overall length – steel			2900		
D Kingpost clearance			793		
E Tailswing radius	1145	1490	1600	1145	1601
F Overall width of superstructure	2168	2187		2187	
G Height over cab			2706		
H Ground clearance			350		
I Track gauge			1850		
J Width over tracks (450 shoes)			2300		
K Transport length with standard dipper	5833	6435	6655	6585	6860
L Transport height with standard dipper			2706		
M Track height			650		
N Counterweight clearance			762		

ENGINE

Machine model	85z-2	86c-2	86c-2 TAB	90z-2	100c-2
Model	Stage V KDI 2504 TCR				
Fuel	Diesel				
Cooling	Water cooled				
Gross power ISO 14396	kW (hp) @ 2200 rpm			55	
Net power	kW (hp) @ 2200 rpm		48	52.4	
Gross torque ISO 14396	Nm @ 1500 rpm		305		
Displacement	cc / litres		2500		
Gradeability	degrees		30		
Starter motor	kW (hp)		3.2		
Battery	volt / Ah		12V, 750		
Alternator	volt / amps		12V, 100		

UNDERCARRIAGE

Machine model	85z-2	86c-2	86c-2 TAB	90z-2	100c-2
No of top rollers			1		
No of bottom rollers			5		
Track width	mm		450		
Track width optional	mm		600		
Ground clearance	mm		350		
Track tensioning			Grease		
Travel speed – low	kph		2.5		2.4
Travel speed – high	kph		5	4.6	4.4
Tractive effort	kN	61	65	58	59.8

HYDRAULIC SYSTEM

Machine model	85z-2	86c-2	86c-2 TAB	90z-2	100c-2
Nominal output @ 2200	lpm	158.4		148	
Excavator/track main relief pressure	bar	300			
Slew main relief pressure	lpm	226			
Auxiliary low flow	lpm	40			
Auxiliary high flow	lpm	100			
Auxiliary low flow	bar	190			
Auxiliary high flow	bar	190			

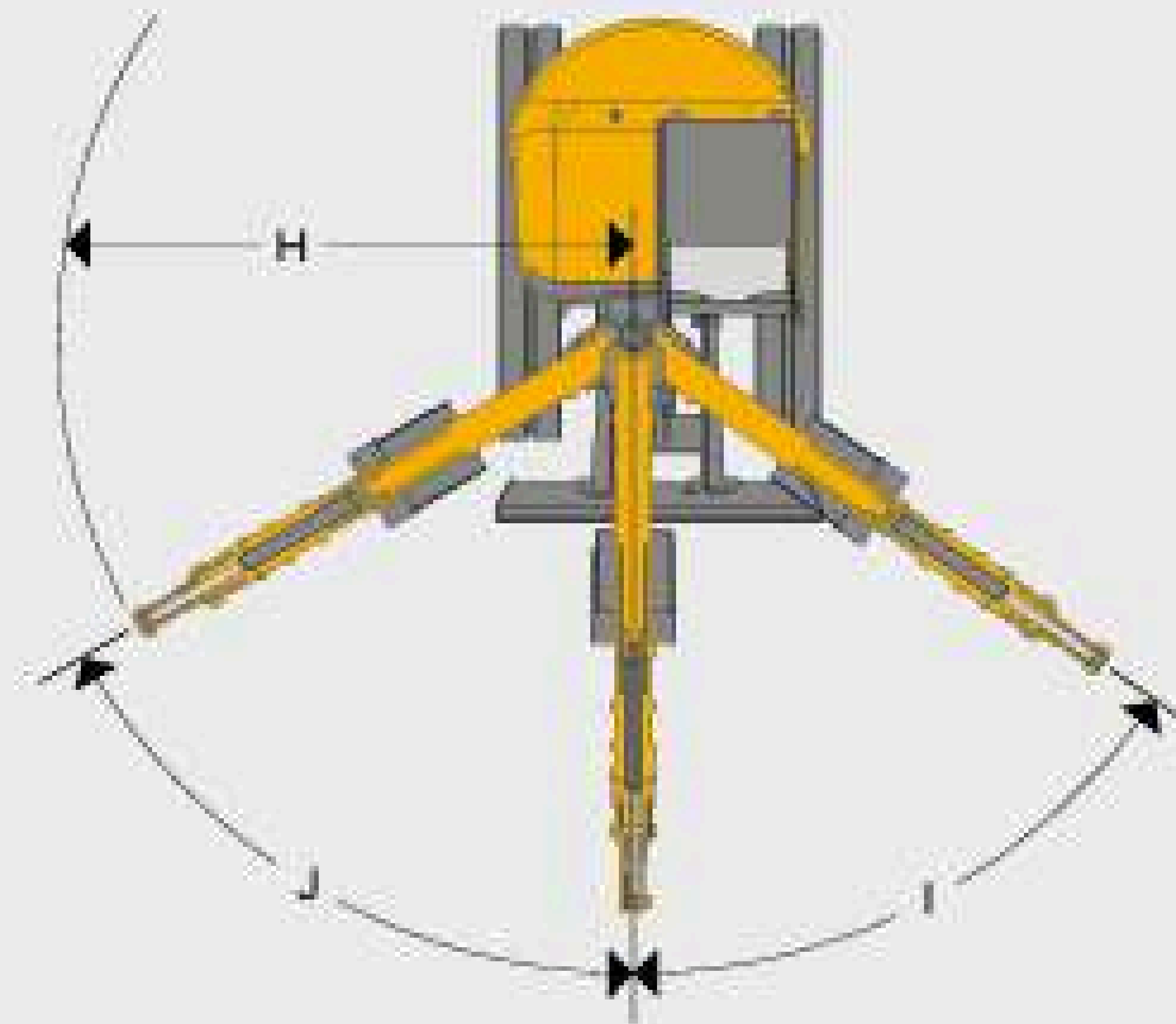
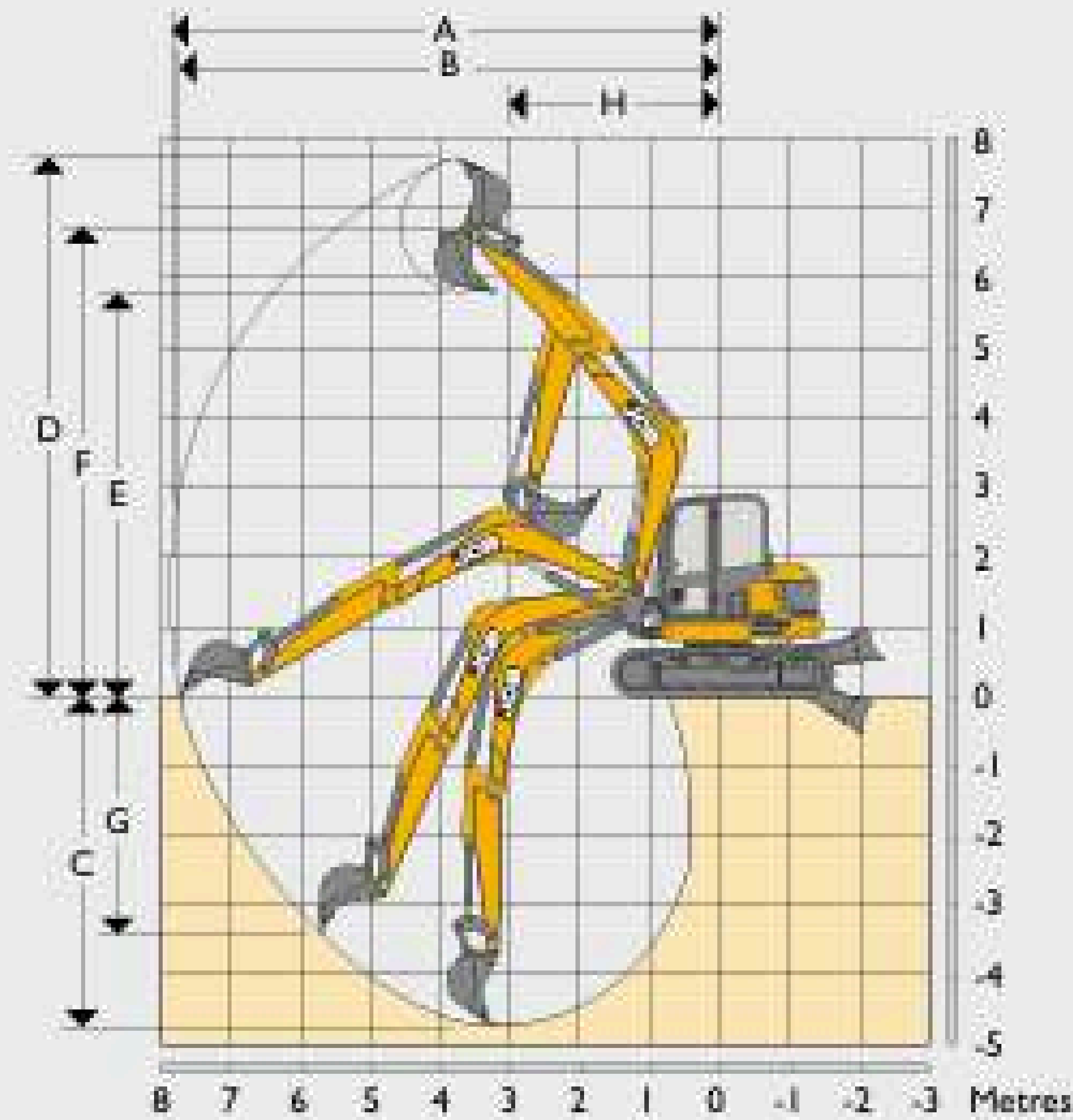
WEIGHTS

Machine model	85z-2	86c-2	86c-2 TAB	90z-2	100c-2
Operating weight* (450mm rubber tracks)	kg	8300	8600	9750	8900
Shipping** weight (450mm rubber tracks)	kg	7950	8720	9400	8550
With FOGS guard roof – Stage 1	kg		+14		+14
With FOGs guard roof – Stage 1 HVAC	kg		+49		+49
With FOGS guard front – Stage 2	kg		+38		+97
With FOGS guard roof – Stage 2	kg		+60		
With steel tracks (450mm)	kg		+195		+184
With steel tracks (600mm)	kg		+408		+367
With Bridgestone geogrips	kg		+134		+134
With wide dozer (2470mm)	kg		+18		+18
With narrow dozer (2220mm)	kg		-17		-5
With 4 way dozer	kg		+205		+217
Mechanical Quickhitch	kg		+95		+95
Hydraulic Quickhitch	kg		+67		
With Long Dipper (2250mm)	kg		+16		+16
With short dipper (1650mm)	kg		-48		-48
Ground bearing pressure (450mm rubber tracks)	kg/cm ²	0.40	0.41	0.45	0.41
Ground bearing pressure (450mm steel tracks)	kg/cm ²	0.40	0.42	0.46	0.42
Ground bearing pressure (600mm steel tracks)	kg/cm ²	0.31	0.32	0.35	0.31

*Operating weight to ISO 6016 including Cab, Rubber Tracks, Standard dipper, 450mm bucket (85z-2, 86c-2, 86c-2 TAB), 600mm bucket (90z), 900mm (100c adding 43kg of weight), full tanks, and a 75kg operator.

**Shipping weight to ISO 6016 is mass of the base machine without an operator, with fuel level at 10% of tank capacity.

WORKING RANGE



		85z-2	86c-2	86c-2 TAB	90z-2	100c-2	
Boom length	mm	2900	3360	Boom in = 2828 Boom out = 3917	3360	3682	
Dipper length	mm	1650 / 2100 / 2250					
A	Max digging reach	mm	6596 / 7029	6815 / 7244 / 7387	7246 / 7844 / 7989	6940 / 7542 / 7495	7065 / 7475 / 7560
B	Max digging reach on ground	mm	6401 / 6848	6635 / 7075 / 7225	7409 / 7691 / 7840	6807 / 7269 / 7389	6888 / 7315 / 7438
C	Max digging depth – dozer up	mm	3234 / 3684	3931 / 4381 / 4531	4022 / 4472 / 4622	3931 / 4381 / 4531	4221 / 4670 / 4820
	Max digging depth – dozer down	mm	3615 / 3715	3922 / 4372 / 4522	4013 / 4463 / 4613	4218 / 4668 / 4818	4491 / 4940 / 5090
D	Max digging height	mm	6487 / 6836	6848 / 7181 / 7293	7776 / 8180 / 8315	6853 / 7181 / 7297	7018 / 7321 / 7478
E	Max dump / load-over height	mm	4674 / 5023	5061 / 5395 / 5506	5900 / 6304 / 6439	4970 / 5320 / 5419	5186 / 5490 / 5660
F	Max height to dipper nose pivot pin	mm	5547 / 5896	5914 / 6248 / 6359	6832 / 7236 / 7371	5914 / 6248 / 6357	6128 / 6435 / 6537
G	Max vertical walkcut depth	mm	2525 / 2941	2736 / 3151 / 3289	3366 / 3782 / 3920	3239 / 2890 / 3821	1877 / 2257 / 3507
H	Min. front swing radius (no offset)	mm	2847 / 3047	2554 / 2679 / 2721	2223 / 2272 / 2288	2958 / 3102 / 3156	2705 / 2863 / 2906
	Min. front swing radius (fully offset)	mm	2478 / 2660	2310 / 2427 / 2466	1919 / 1963 / 1978	2364 / 2508 / 2562	2162 / 2360 / 2408
I	Boom swing left	degrees	55				
J	Boom swing right	degrees	60				
	Bucket rotation	degrees	188				
	Dipper rotation	degrees	114	122	126	114	122
	Bucket tearout	kN	57.1				
	Dipper tearout	kN	49.9 / 42.3 / 40.3				
	Slew speed	rpm	10				
			7.9				
			8.2				

DOZER

Machine model	85z-2	86c-2	86c-2 TAB	90z-2	100c-2
Dozer length	mm	1497			
Max height above ground	mm	471			
Dig depth below ground	mm	461			
Approach angle	degrees	27.8			
Width	mm	2320			
Height	mm	473			
Reach in front of tracks	mm	615			

OPERATOR STATION

Machine model	85z-2	86c-2	86c-2 TAB	90z-2	100c-2
Cab/canopy height	mm	1554			
Cab/canopy height with FOGS guard LEVEL 1	mm	1643			
Cab/canopy height with FOGS guard LEVEL 2	mm	1730			
Cab/canopy length	mm	1942			
Cab/canopy width	mm	1040			
Distance from seat base to roof	mm	1120			
Door aperture width	mm	612			

SERVICE CAPACITIES

Machine model	85z-2	86c-2	86c-2 TAB	90z-2	100c-2
Fuel tank	l	112			
Engine coolant	l	11			
Engine oil	l	11.2			
Hydraulic system	l	118			
Hydraulic tank	l	66			

NOISE/VIBRATION (85Z-2, 86C-2)

			Uncertainty	Measurement Conditions
Noise at the operator station (Lpa)	76 dB	(KpA)	0 dB	ISO 6396: 2008
Noise emission from the machine (Lwa)	95 dB	(KwA)	3dB	ISO 6395: 1988
Hand Arm Vibration (m/s ²)				
Tracking duty	≤ 2.5	(K)		EN ISO 5349-2: 2001*
Low idle and excavating duty	≤ 2.5	(K)		EN ISO 5349-2: 2001*
Whole body vibration (m/s ²)	0.3	(K)		ISO 2631-1: 1997*

*Based upon a test cycle defined in SAE J 1166.

NOISE/VIBRATION (90Z-2, 100C-2)

			Uncertainty	Measurement Conditions
Noise at the operator station (LpA)	78 dB	(KpA)	0 dB	ISO 6396: 2008
Noise emission from the machine (LwA)	97 dB	(KwA)	1 dB	ISO 6395: 1988
Hand arm vibration (m/s ²)				
Tracking duty	≤ 2.5	(K)		EN ISO 5349-2: 2001*
Low idle	≤ 2.5	(K)		EN ISO 5349-2: 2001*
Whole body vibration (m/s ²)	0.4	(K)		ISO 2631-1: 1997*

*Based upon a test cycle defined in SAE J 1166.