

NATURE LOVING

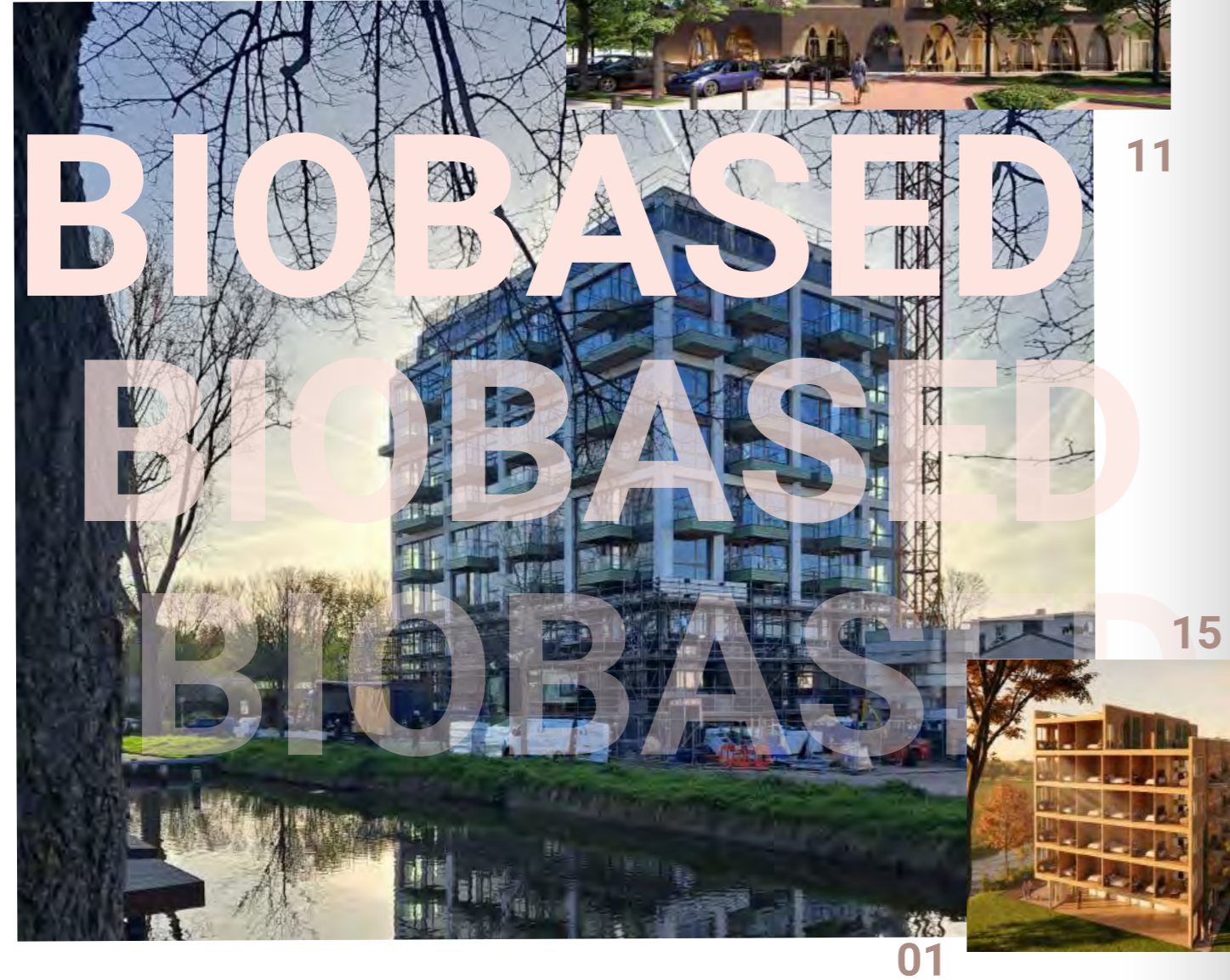
Architects and Urbanists



**URBAN
CLIMATE
ARCHITECTS**



In harmony
with nature



11

15

01



02



03



04



05



06



07



08



09



10



12



13



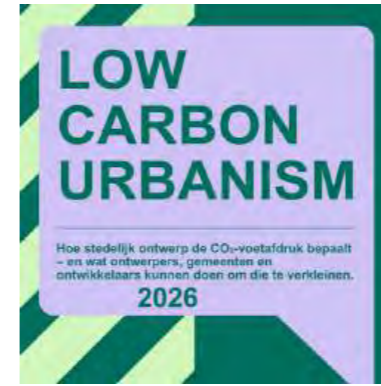
14

table of contents:

Who we are	10
Our mission aligns with the Global Goals	12
See our new biobased projects in progress.	14
The use of wood as a construction material is our speciality.	16
01. The Urban Woods Delft	18
02. Knoest	24
03. Care Housing Salvation Army	28
04. Noordeinde Kampveld	32
05. Molslaan	34

06. Mass Timber Production Facility	36
07. Centrum Island	38
08. ABS Langsingerland	40
09. The Ringpass Delft Hockey Club Complex	42
10. The Urban Woods Amsterdam	44
11. The Urban Woods Deventer	46
12. Office Haagweg	48
13. Nieuw Boekhorst	50
14. Sint Jorisweg	52
15. Steenwijklaan	56

RESEARCH RESEARCH RESEARCH



15



16



17



18



19

Research

15. Low Carbon Urbanism	58
16. Built by Nature	60
17. C-CLT	62
18. Matchmaker	64
19. DURA Timber housing Study	66

NATURE INCLUSIVE BUILDINGS



19



20



21



22



23



24

Nature inclusive	68
20. Zeesluisweg	70
21. Woldring	72
22. Weverstede	74
23. Jullensblok	78

24. The Pavilion	80
See our first circular building.	82
25. Stadslab	84
A few words in conclusion	86

Who we are

URBAN CLIMATE ARCHITECTS



URBAN CLIMATE ARCHITECTS – Our Vision

At Urban Climate Architects, we envision a future in which everyone can live, learn, work and play in a healthy and safe environment. We design spaces where people of all ages, backgrounds and incomes can thrive – places that genuinely enhance quality of life.

Urban Development with Responsibility

We approach urbanisation with care and responsibility, seeking to improve city life while reducing pressure on natural systems. Our ambition is to intensify urban areas intelligently, protecting ecosystems while unlocking opportunities within existing city boundaries.

Our commitment to a circular and inclusive society goes beyond materials and construction methods. It is rooted in the belief that cities must be equitable, resilient and accessible to all.



Recognising the Power of Climate

Climate is not a constraint; it is a defining force that must be understood and respected. Our sustainable design approach prioritises local energy generation wherever possible and favours biobased materials over carbon-intensive alternatives such as concrete and steel.

Mass Timber, for example, is renewable, stores carbon and can be repurposed at the end of its life. It is lightweight, efficient to assemble and central to our strategy for low-carbon, future-ready architecture.

An Architect's Eye for Detail

Quality is the foundation of our work. We design beyond short-lived trends, aiming instead for enduring spatial value. Through careful attention to proportion, human scale and material expression, we create buildings that offer calm, clarity and long-term relevance.

Our understanding of sustainability extends beyond performance metrics. It engages the senses and enriches everyday experience – from the warmth and texture of mass timber surfaces to the subtle acoustic qualities of natural materials. In every project, we seek a refined balance between form, function and environmental responsibility.

We believe in long-term investment over short-term gain. For us, quality, equity and sustainability are the true measures of success.

We design in accordance with the principles of the Sustainable Development Goals, focusing on 10 out of the 17 global goals, both in new projects and in the renovation of existing ones. In our projects, we merge environmental goals with business ambitions.



In line with European climate ambitions, we are committed to reducing greenhouse gas emissions by two-thirds by 2030. We remain steadfast in this commitment, even as market conditions evolve.

Our expertise lies in environmentally responsible design, with a strong emphasis on materials of natural origin and low-carbon construction systems.

Our mission aligns with the UN Sustainable Development Goals.

We deliver high-quality spatial solutions that serve residents and users alike – in both public and private buildings. Our projects are designed to adapt to changing needs over time, contributing to a better quality of life and a richer everyday experience.

We design in accordance with Paris Proof principles, aligned with the objectives of the Paris Agreement on emissions reduction. In practice, this means:

We reduce embodied carbon by prioritising mass timber construction systems and integrating low- or zero-impact environmental technologies.

We enhance operational energy performance through high-performance insulation with low U-values, energy-efficient lighting and strategies that minimise overall energy demand.

We work in line with the Sustainable Development Goals, responding carefully to the needs of users while safeguarding the natural environment. Existing ecological qualities are protected and strengthened wherever possible.

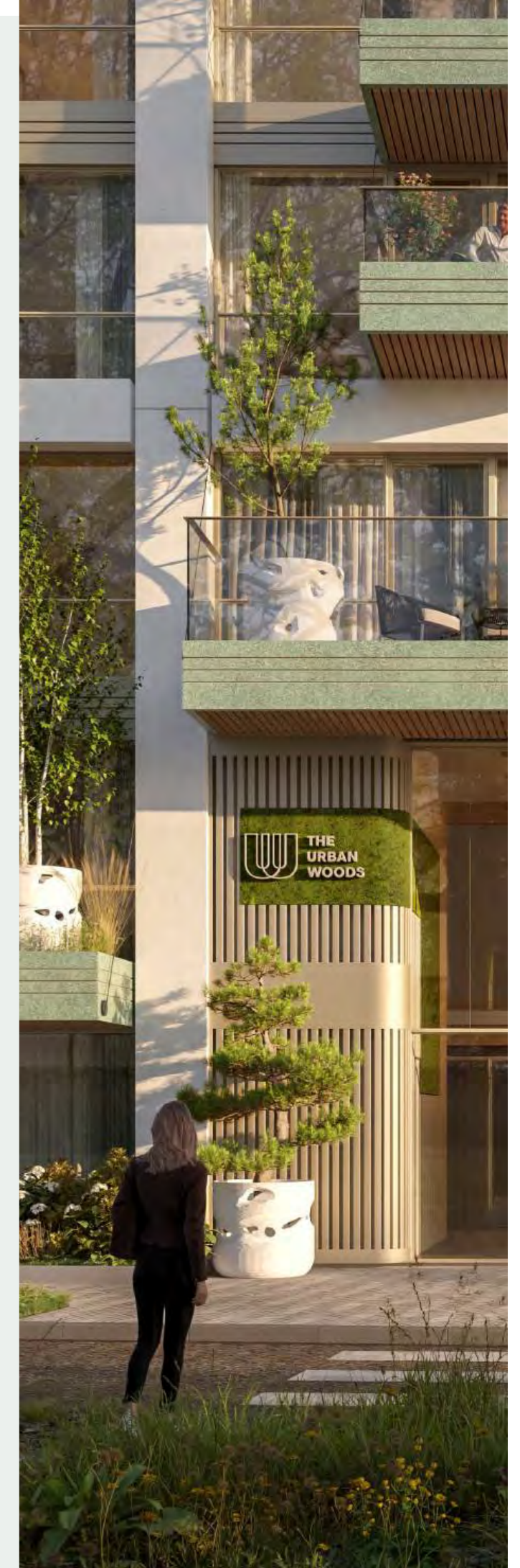
We actively support biodiversity by creating favourable conditions for local flora and fauna, with particular attention to birds and insects. Our buildings are designed to respond intelligently to changing climatic conditions.

We ensure healthy indoor environments through well-considered passive design strategies and, where necessary, efficient active heating and cooling systems. In doing so, we enhance quality of life by prioritising health, comfort and long-term wellbeing.

BREEAM®
OUTSTANDING

We design with the future in mind, integrating advanced technological solutions and working in accordance with BREEAM standards.

In 2023, our Urban Woods project in Delft achieved a BREEAM Outstanding rating in the residential category – one of the highest recognitions for sustainable building performance.





Wood is a natural choice in sustainable development.

We prioritise renewable materials of natural origin and therefore frequently select mass timber as the primary structural system in our projects. Its ability to store carbon, reduce embodied emissions and create healthy indoor environments makes it central to our architectural approach.

BIOBASED

IN WOOD, WE'RE GOOD.

The use of wood as a construction material is our core expertise.

Mass Timber as a driving force

At Urban Climate Architects, mass timber is not a material choice. It is a strategic design decision.

We design and realise high-performance buildings in cross-laminated timber, mass timber and other engineered wood systems. From multi-storey residential schemes to urban infill and mixed-use developments, mass timber enables us to radically reduce embodied carbon while creating warm, healthy and future-proof spaces.

Carbon stored in the structure

Mass Timber captures CO₂ as it grows and stores it within the building fabric. By replacing concrete and steel with mass timber systems, we significantly lower embodied emissions and contribute to long-term carbon storage at building scale.

Precision, flexibility and design freedom

Engineered mass timber allows for accurate prefabrication and refined detailing. Lightweight yet structurally robust, it enables generous spans, adaptable layouts and efficient construction logistics. This precision translates into higher build quality and fewer on-site uncertainties.

Responsible sourcing

We work exclusively with certified mass timber from verified supply chains. Sustainable forestry, renewability and transparency are essential conditions in every project.

Speed of construction

Off-site fabrication and dry assembly methods shorten construction time and reduce disruption in dense urban contexts. Faster building means lower impact, greater efficiency and earlier occupation.

Whole-life performance

Mass Timber structures combine low embodied energy with strong operational performance. Over the lifecycle of the building, this results in competitive whole-life costs and long-term value.

Healthier urban environments

Mass Timber contributes to improved indoor climate, acoustic comfort and biophilic quality. At the urban scale, its lower thermal mass and integration with green strategies support climate-responsive design and reduce heat stress.



01. The Urban Woods Delft

Location: Delft, Netherlands
Program: Residential building with commercial space on the ground floor
Area: 7500 m²
Architects: Urban Climate Architects
Contractor: UCA Construction Team
Status: under construction
Budget: 10 million euros

The Urban Woods is a landmark in contemporary residential architecture and one of Europe's first ten-storey residential buildings realised entirely in mass timber construction. The project demonstrates how high-rise living can align with radical carbon reduction, circular design principles and healthy urban development.



Developed in collaboration with a multidisciplinary team of specialists, The Urban Woods sets new benchmarks for sustainable architecture at scale. Every design decision balances environmental performance, biodiversity, social value and long-term usability.

Biobased structure and low-carbon ambition

The building is constructed entirely from engineered mass timber, significantly reducing embodied carbon compared to conventional concrete structures. By using materials of natural origin and responsibly sourced mass timber, the project actively stores CO₂ within its structural system.

Integrated Sustainable Technologies

- A comprehensive range of advanced systems supports the building's performance:
- Rainwater collection and retention through layered green roofs
- Greywater reuse for toilet flushing
- Photovoltaic panels for on-site renewable energy generation
- A ground source heat pump for heating and cooling
- High-performance insulation and energy-efficient appliances
- Intelligent monitoring systems that provide residents with real-time insight into their energy use and environmental impact via the Urban Woods app

Together, these elements form an integrated and efficient building system in which technology and architecture operate as one.

Energy-Neutral Performance



The Urban Woods is designed to operate as an energy-neutral residential complex. Solar panels, heat recovery from air and water, and a highly insulated building envelope ensure strong performance across all seasons.

Projected performance indicators are:

- BENG 1: 66 kWh/m²
- BENG 2: 17 kWh/m²
- BENG 3: ≥ 80%

The design ambition targets full energy efficiency in use, with final confirmation following post-occupancy monitoring after one year of operation.



Water strategy

Rainwater is collected and stored in retention layers integrated within the green roof. This water is reused for irrigation and toilet flushing, reducing potable water demand. The current system achieves approximately 20% lower water consumption compared to the average household, with a 2030 target of 30% reduction.



Ground source heat pump

The ground source heat pump provides stable indoor temperatures throughout the year, independent of external climate conditions. In summer, the system operates in reverse mode to provide passive cooling, eliminating the need for conventional air conditioning and ensuring high levels of thermal comfort.

The Urban Woods emerge from a collaboration of A collaborative ecosystem

The Urban Woods is the result of an interdisciplinary collaboration between ecologists, technology specialists, biobased architects, behavioural scientists and creative makers. Together, we move beyond conventional building practice.

Our biobased buildings are not simply physical structures. They are living systems designed to encourage sustainable habits, support biodiversity and strengthen social connection. From integrated habitats for birds and insects to shared spaces that stimulate interaction, architecture becomes a catalyst for healthier urban life.

We see sustainable development as a collective responsibility. Knowledge sharing is therefore central to our mission. As part of our 2030 ambitions, we are building a publicly accessible knowledge platform that brings together our research, lessons learned and practical expertise.

By opening up our insights, we aim to accelerate change — inspiring others and co-creating a new standard for climate-positive urban living.

Certifications and Quality Assurance

We operate to the highest international standards. The Urban Woods is certified in accordance with ISO 9001 (quality management) and ISO 14001 (environmental management).

ISO 14001 ensures environmental performance is embedded not only within our organisation, but throughout the entire supply chain — from sourcing to delivery and execution.

“ Sharing is reaching a new level. Both in energy usage and knowledge. ”

Environmental Performance Monitoring (MPG)

The Environmental Performance of Buildings (MPG) is calculated by an independent consultant at each key design stage: Preliminary Design (VO), Detailed Design (DO), Technical Design (TO) and Execution Design (UO).

By monitoring performance at every milestone, we ensure that sustainability targets remain on track throughout the design process. After completion, each project is evaluated to identify improvements and establish an enhanced baseline for future developments.

BREEAM-NL Outstanding – MAT 5

The Urban Woods achieved BREEAM-NL Outstanding, including compliance with MAT 5 — the credit for responsibly sourced materials.

For all primary building components, at least 80% of materials are verified as responsibly sourced. Traceability and transparency are fundamental to our material strategy.

Responsible mass timber and Chain of Custody

We collaborate from the outset with certified mass timber suppliers to optimise the application of Cross-Laminated Timber (CLT). Our MPG and BREEAM ambitions prioritise circular material use and long-term carbon storage.

We are FSC-certified and ensure that all mass timber and bamboo composites are TPAC-approved. Through Chain of Custody certification, materials are tracked from forest to production, processing and distribution — guaranteeing responsible sourcing at every step.



Preventing Waste Through Design

Waste prevention begins at the design stage.

Extensive prefabrication significantly reduces material loss on site. Through Building Information Modelling (BIM), we create a digital twin of the building, enabling simulation, coordination and optimisation before construction begins.

This results in:

- Fewer construction errors
- Reduced material waste
- Easier disassembly and reuse
- More efficient maintenance throughout the building's lifecycle

Because every component is digitally documented, maintenance teams can intervene precisely and efficiently, reducing unnecessary visits and resource use.

Renewable Materials (Volume-Based)

Currently:

- 50% of structural materials in Delft
 - 70% at our headquarters
- consist of renewable, regrowable materials.

These percentages position us among the frontrunners in biobased construction.

Our ambition for 2035 is to increase this to 80% renewable materials across our structural systems.

Reuse After End of Life

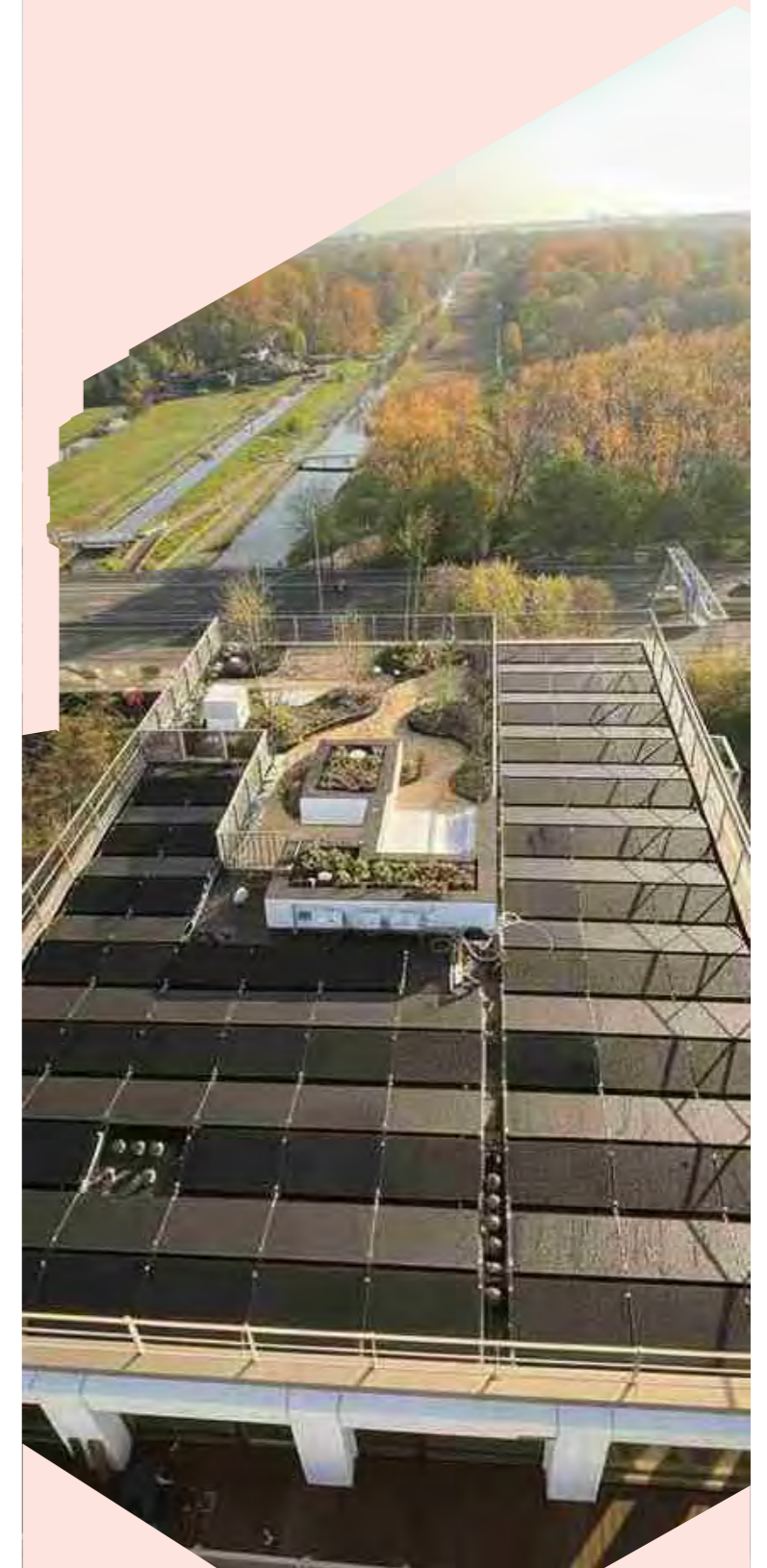
Approximately 85% of the building can be reused at the end of its lifecycle.

The structural system is designed for disassembly, allowing components to be reused in future projects. Elements that cannot be directly reused can be processed into secondary materials, such as wood chips or pellets, suitable for bio-based energy generation or the production of particleboard and fibreboard.

In this way, the building functions not as an endpoint, but as a material bank for future architecture.



“ Tallest building in The Netherlands with no concrete core. ”



Vegetation with a purpose

We go for research-based vegetation. For each location of The Urban Woods, flora and fauna experts conduct research and set a target. Based on this, we draw up a strategy to strengthen the presence of local flora and fauna, so that the building contributes to them. Roofs, gardens, and balconies are green havens, to increase biodiversity, reduce heat stress and make people happy.

Buildings as Bird Restaurants

We design for measurable ecological impact.

Each tower integrates bio-based “Vogelspotten” tree planters – specially developed balcony elements that function as nesting and feeding habitats. These integrated features provide sheltered spaces for birds and insects, transforming façades into vertical ecosystems.

Bird nesting boxes are positioned according to species-specific requirements, taking into account orientation, sunlight exposure, height and wind conditions. In this way, biodiversity is not decorative – it is strategically embedded in the architecture.

Gardens That Connect

Biodiversity becomes a shared responsibility.

The Urban Woods includes a resident engagement programme that encourages planting in line with an ecological vision. Together with residents, we extend green networks beyond the building, strengthening local parks and contributing to urban biodiversity at neighbourhood scale.

Shared gardens and planted terraces become places of encounter – connecting neighbours while supporting nature.

Trees provide food for birds and insects.



Bird nest Integrated into Clay pot

Inspiring Education

The Urban Woods includes an education and awareness programme for residents and neighbours, designed to actively promote local biodiversity.

Together, we achieve more.

The programme features a “menu” of inspirational planting guides – curated selections for both people and wildlife. These guides highlight plant species that support pollinators, birds and small mammals, helping to strengthen local ecological networks.



lightweight tree system for CLT buildings

Residents are encouraged to introduce these species into their private gardens and balconies, creating a cascading effect that enriches the local nutrient chain and enhances biodiversity at neighbourhood scale.

Educational materials are shared both digitally and physically throughout the area, ensuring that knowledge spreads as organically as the planting itself.

“ Our buildings serve as habitats for both humans and birds, insects, and other living creatures. ”

02.Knoest

Location: Pijnacker, Netherlands
Program: Residential building
Area: 3225 m²
Architects: Urban Climate Architects
Contractor: Revolve Development
Status 2025 completed



Knoest is a new residential neighbourhood in Pijnacker, developed by JansenDeJong and Revolve Development. The district offers a diverse range of housing types set within a generous, nature-led masterplan.

Positioned at the transition between low-rise urban housing and the open landscape, the site forms a green wedge that connects town and countryside. Biodiversity is central to the vision: approximately 40% of the area is dedicated to greenery and water.

We designed the final building within the district – a contemporary residential pavilion that completes the urban ensemble while opening itself towards the landscape. The architecture is deliberately light and inviting. Generous, staggered outdoor terraces create depth and rhythm, giving the building a transparent and open character within its green surroundings.

The façade is composed of natural materials, offering a refined contrast to the predominantly brick architecture of the neighbouring blocks. The plinth anchors the building in the landscape through integrated planting and habitats for local flora and fauna, including nesting boxes, bee hotels and species-specific greenery along the façades.

The five-storey building is realised entirely in cross-laminated timber (CLT). The exposed mass timber structure remains visible within the apartments, creating a warm, healthy and tactile living environment.

In total, the building accommodates 29 apartments, ranging from 65 to 110 m², offering a diverse mix of homes embedded in nature.



WOOD IS MORE THAN SUSTAINABLE.

Carbon Stored in the Structure

Knoest stores approximately 764 tonnes of CO₂ within its mass timber structure. Rather than generating emissions during construction, the building actively locks carbon into its fabric. This volume of stored CO₂ is comparable to the annual electricity consumption of around 850 households.

Proven Fire Safety

The mass timber structure meets — and in several respects exceeds — the fire safety performance required for conventional construction. Engineered mass timber is designed to perform predictably in fire conditions, offering structural stability and compliance with stringent safety standards.

A Natural Indoor Climate

Mass Timber contributes to a calm and balanced living environment. Studies show that visible wood surfaces can help reduce stress levels, lower heart rate and improve concentration — particularly in children. Living with natural materials supports wellbeing on both a physiological and psychological level.

Healthier Air and Humidity Balance

Wood construction naturally regulates indoor humidity, contributing to a comfortable and healthy indoor climate. Combined with effective ventilation strategies, this results in improved air quality and year-round comfort.

Acoustic Comfort

Mass Timber has inherent sound-absorbing properties. Compared to concrete or steel structures, it reduces reverberation and enhances acoustic quality within the home.

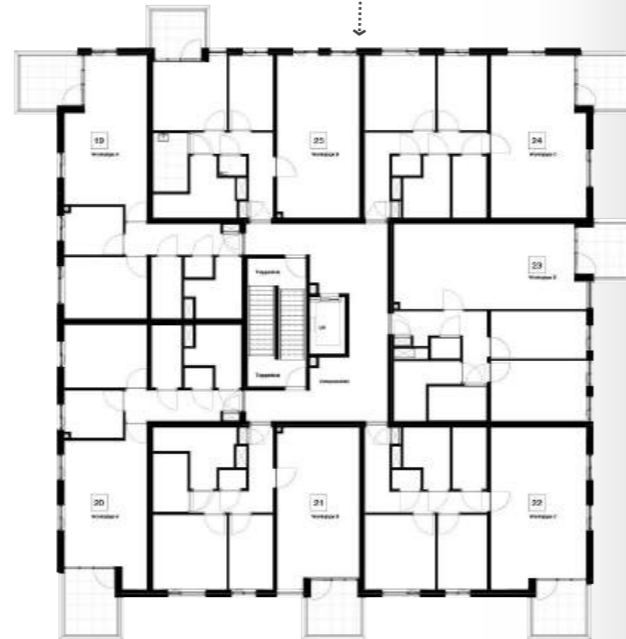
Natural Thermal Performance

Mass Timber offers excellent natural insulation. In winter, it retains warmth efficiently; in summer, it helps keep heat out for longer. The result is a stable indoor climate and enhanced comfort throughout the year.

Circular by Nature

Mass Timber is a long-life, reusable material. Designed for disassembly, structural components can be reused at the end of a building's lifespan. Nothing is considered waste — materials remain part of a continuous cycle.

Load-bearing walls in CLT construction.



Long-Term Financial Value

With an A+++ energy rating, energy consumption — and therefore monthly operating costs — remain low. In addition, energy-efficient homes often qualify for favourable green mortgage conditions, making sustainable living financially attractive as well as environmentally responsible.

Future-Proof Living

Residents have the certainty that their home complies with the most recent safety, energy and sustainability standards. The building is designed to meet today's regulations — and anticipate tomorrow's.

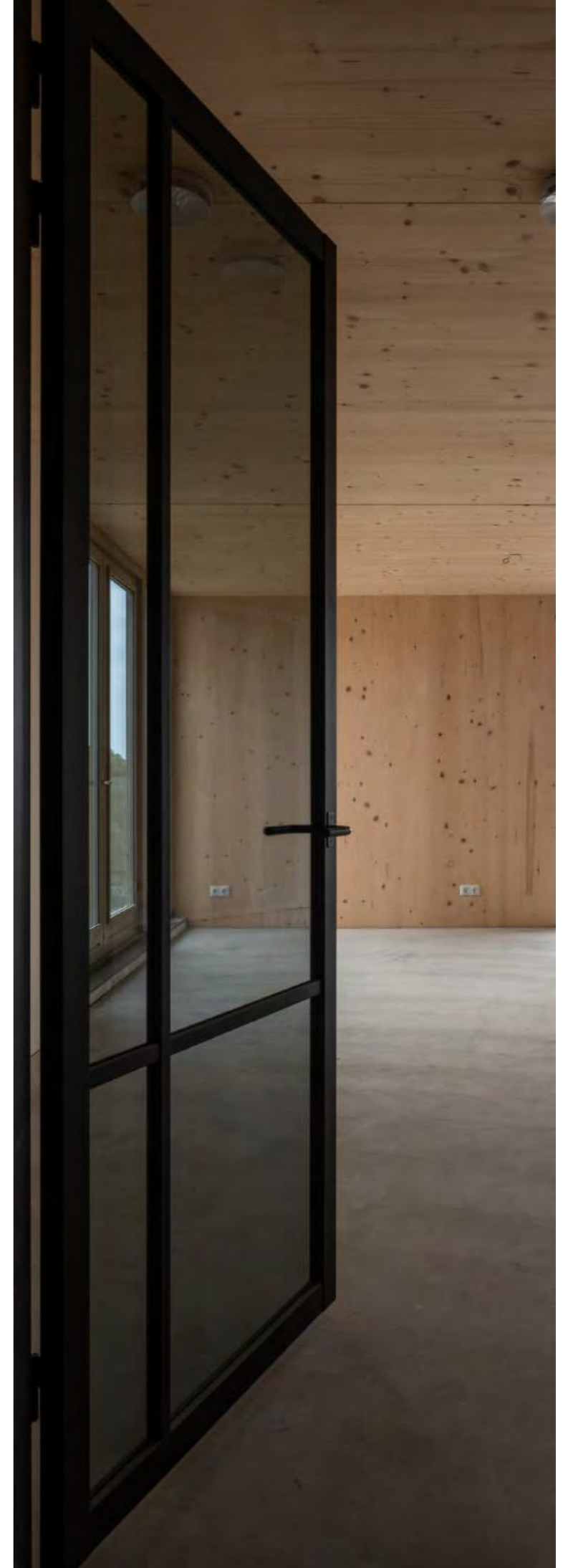
Leading by Example

Choosing mass timber is more than a material decision. It demonstrates leadership in climate-conscious living and inspires awareness within the wider community.

Examples of apartment layouts.



Photo: Egbert de Boer



03.Care Housing Salvation Army

Location: Rotterdam, Netherlands
Program: Nursing and medical care facility
Area: 2400 m²
Architects: Urban Climate Architects
Contractor: VIOS Vastgoed
Status: 2023 - completed
Budget: 4,2 million euros



80% materials of biological origin and materials with closed-loop cycle



“ By designing based on the properties of wood, we ensure better quality of space while maintaining the same construction costs. ”

CLT Care Facility, Rotterdam

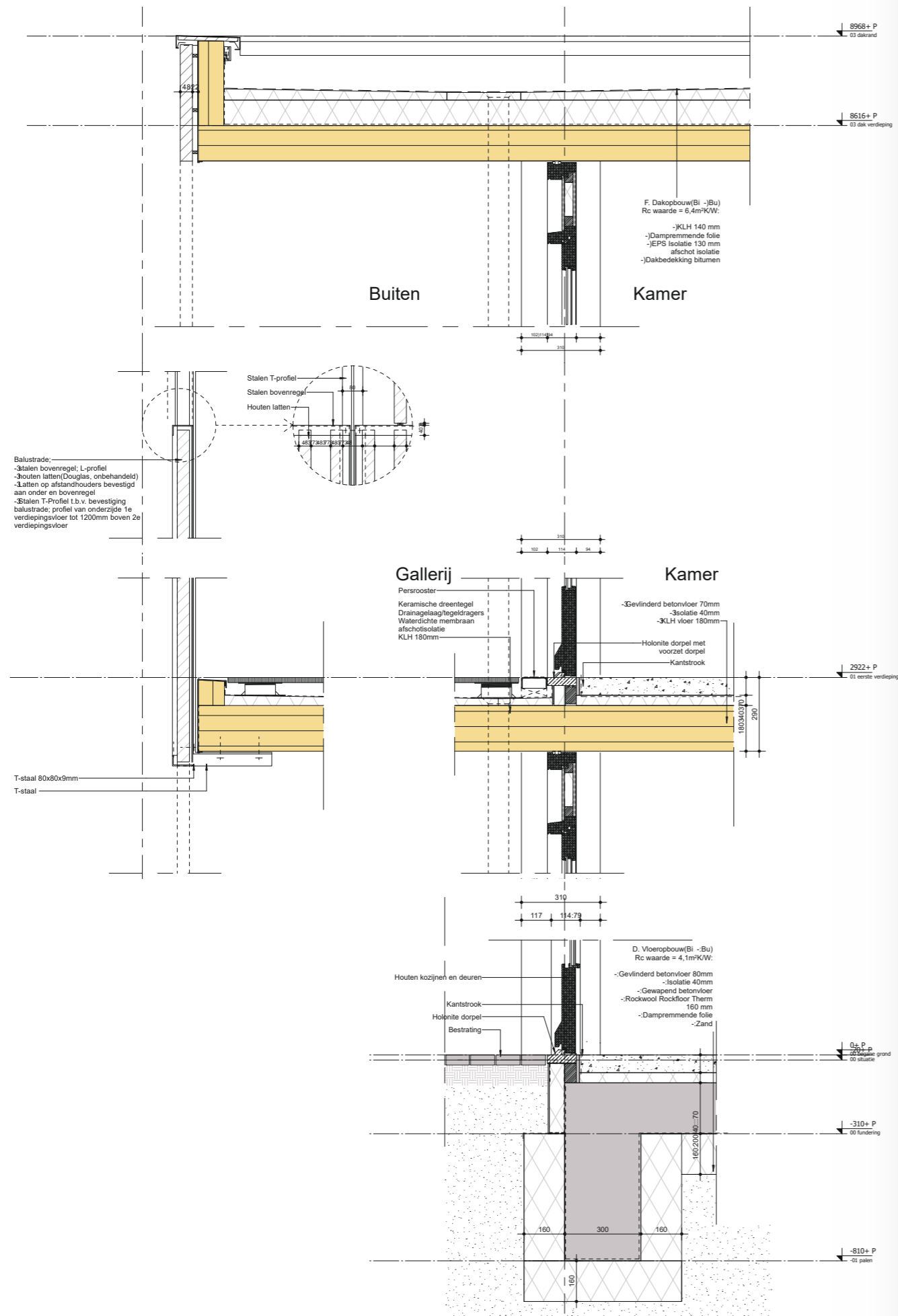
In 2023, a nursing and medical care facility designed by our team was completed in the heart of Rotterdam. The building accommodates 50 residents and includes dedicated spaces for day care and staff offices.

The project demonstrates how mass timber construction can enhance both sustainability and wellbeing in healthcare environments. The structure is realised in cross-laminated timber (CLT), creating a warm, calming atmosphere for residents and staff alike.

The building is highly energy-efficient: approximately 85% of its annual energy demand is generated on site through photovoltaic panels installed on the roof.

Biodiversity is integrated into the landscape design. Undeveloped areas are shaped with swales and planted with native, wild vegetation, supporting local ecosystems while improving water retention and climate resilience.

The project meets the highest material performance standards in the sector. The extensive use of mass timber — both in the façade and as an interior finish — contributed to reduced construction costs, improved indoor air quality and a healthier living environment.



The use of partial prefabrication – including structural elements, partition walls and fully fitted bathroom modules – enabled a faster and more efficient construction process.

This approach reduced on-site labour, minimised errors and ultimately lowered overall investment costs while improving build quality.

“ In our projects, CLT elements meet all criteria for passive construction. They have a fire resistance class of REI 30-120 and increase the thermal mass of the building. ”

Through the use of cross-laminated timber (CLT), the Rotterdam building creates a distinctive and healthy indoor microclimate. The natural properties of mass timber contribute to clean air and a balanced internal environment for residents and staff.

The building is highly energy-efficient. The continuous CLT structure significantly reduces thermal bridging, which is essential for achieving high levels of thermal comfort and consistent performance throughout the year.



04.Noordeinde Kampveld

Location: Delft, Netherlands
Program: Housing, offices and inner courtyard
Area: 2540 m² working space, 1792 m² living space
Architects: Urban Climate Architects
Status: 2022 - Preliminary Design

Completing the Street

This project strengthens and completes Kampveld by adding new homes and introducing a semi-public garden at its heart. The development reinforces the existing urban structure while creating space for the street to flourish — socially, spatially and ecologically.

A Balanced Living-Working Environment

Our ambition is to create a mixed-use street where living and working exist in equilibrium. By adding new residences and transforming existing office buildings into apartments, we introduce vitality throughout the day and evening. The result is a more resilient and inclusive urban environment.

The Garden as the Heart of the Plan

At the centre of the development lies a semi-public garden — the green core of the project. This garden enhances biodiversity, strengthens climate resilience and provides high-quality green space within the city centre of Delft. It is designed as a place for meeting, recreation and quiet retreat within a vibrant urban setting.

The Courtyard as Community Space

The communal courtyard forms both the physical and social heart of the development. A new passage will connect it to the adjacent courtyard of Renaud, creating a larger, continuous green oasis within the city.

The space encourages interaction and shared use — from informal gatherings and picnics to play and relaxation. Ecological research will inform the planting strategy, ensuring the existing flora and fauna are preserved and the local urban biotope is strengthened. Flora and Fauna

The historic garden, including its monumental trees, will be preserved and opened to the public. Existing vegetation will be retained wherever possible and enhanced where needed. A landscape architect will further develop the ecological and spatial potential of the site.

New Residential Development

New homes complete the street frontage and contribute to a lively and diverse neighbourhood.

Residents benefit from both private gardens and access to the shared semi-public garden, which functions as a collective backyard for recreation and social connection.

The residential concept is demand-driven. In close dialogue with future residents, we explore housing needs and spatial arrangements in a flexible, almost modular manner.

Clear architectural guidelines safeguard coherence and quality across the ensemble. The programme accommodates homes for all ages, ranging from 40 m² to 180 m², tailored to the specific demand of this location. The owner is open to selling individual plots within this framework.

Transformation of the Existing Building

The existing office buildings on Kampveld will be transformed into apartments, with an additional floor added to increase residential capacity.

This adaptive reuse strengthens the mixed-use character of the street while preserving its urban fabric. The extension is subject to spatial approval procedures, ensuring the quality and proportionality of the intervention.



05.Molslaan

Location: Delft, Netherlands
Program: Housing
Area: 570 m²
Architects: Urban Climate Architects
Status: 2021 - completed
Budget: 1,1 million euros

How do you move beyond incorporating circular elements – and design an entirely circular development?

With the transformation of the former school building De Molshoop in Delft, we set out to explore exactly that question.

From School to Circular Housing

In 2016, the vacant school building in Delft's historic centre became available for purchase.

We acquired the property with the ambition of transforming it into 14 apartments for young professionals and PhD students – using circular principles as the foundation of the project.

Together with research agency Muzus (Delft), we conducted in-depth research into the needs and daily routines of the target group. Interviews revealed an important insight: sustainability was not a primary concern unless it was convenient or financially attractive. However, shared amenities and stress-reducing features were highly valued.

These findings shaped both the architectural design and the development model.

A Circular Living Model



The project introduced a circular housing concept that extended beyond materials.

Rent formed the base, complemented by flexible subscriptions tailored to individual needs. Tenants paid for their actual consumption of electricity, water and waste, translated into a CO₂ footprint.

Residents could actively influence their footprint – and their expenses – for example by growing vegetables in the Urban Cultivators integrated into each kitchen, or by choosing cycling over driving. A blockchain-based system was implemented to organise contracts and service subscriptions transparently.

Circularity thus became tangible, measurable and behavioural.

Circular Design and Material Strategy

Architecturally, circularity was embedded at multiple levels:

- Maximum reuse of the existing structure
- Preservation of mass timber roof beams and roof tiles
- Urban mining of concrete floors and mass timber façade elements for future reuse
- New materials selected for disassembly and reversibility
- Mechanical connections instead of adhesives wherever possible

For example, compressed stone wool was used instead of PUR foam for airtight detailing between mass timber façades and aluminium frames.

The existing structure was upgraded with high-performance insulation and airtight detailing. A double façade system functions as a climate buffer, creating a transitional zone between inside and outside while improving energy performance.

Energy and Climate Strategy

The building operates fully electric. Energy demand is minimised through heat recovery systems at multiple levels – ventilation, heating and shower water – with renewable energy generated on the roof.

Green elements further enhance indoor comfort. The double façade filters particulate matter and provides passive cooling. Moss walls in communal spaces and clay plaster finishes in the apartments regulate humidity and improve indoor air quality.

Circularity as Added Value

Remarkably, most circular measures were realised through intelligent design decisions rather than costly add-ons. By combining functions – such as the second façade acting simultaneously as climate buffer, moisture regulator and outdoor extension – investments created multiple layers of value.

As a result, the project was delivered within a conventional rental framework, while significantly improving environmental performance and quality of life.

06. Mass Timber Production Facility

Location: Voorhout, The Netherlands
Area: 3,667 m² GFA
Architects: Urban Climate Architects
Status: Planning application submitted

Mass Timber Construction at Industrial Scale

Industrial architecture is entering a new phase. Where steel and concrete once defined efficiency, mass timber construction in the Netherlands now offers a credible, scalable alternative.

For this 3,667 m² production facility in Voorhout, We demonstrate how engineered mass timber buildings in Europe can operate at full industrial scale. The structure is designed entirely in cross-laminated mass timber and glued laminated timber, combining structural clarity with measurable carbon reduction.

This is not mass timber as aesthetic gesture.
This is mass timber as infrastructure.



Industrial Buildings in Cross-Laminated Timber

The building's primary structure is executed in CLT and glulam, delivering:

- Substantial embodied carbon reduction
- Long-term CO₂ storage within the structural frame
- Large-span flexibility for production layouts
- A healthier and more comfortable indoor working environment

Mass timber is no longer limited to residential typologies. Industrial halls, logistics centres and mixed-use production facilities can benefit from engineered mass timber systems that are robust, adaptable and commercially viable.

The result is a low-carbon industrial architecture that meets performance standards while expressing innovation and responsibility.

Engineered mass timber as Strategic Infrastructure

For manufacturers operating within biobased and circular supply chains, the building itself becomes part of the ecosystem. A mass timber production facility constructed in mass timber strengthens the entire value chain, from forestry and fabrication to assembly and reuse.

Our design integrates:

- Structural modelling optimised for material efficiency
- Climate-responsive façade systems with integrated photovoltaics
- Daylight strategies enhancing workplace quality and productivity
- Future-proof structural grids allowing subdivision and expansion

Mass timber construction in the Netherlands is not an experiment. It is a strategic pathway towards industrial decarbonisation.

Why mass timber for Industrial Development?

Developers and investors increasingly recognise the long-term value of engineered mass timber industrial buildings in Europe:

- Lower embodied carbon supporting ESG objectives
- Accelerated construction through prefabrication
- Reduced foundation loads
- A distinct architectural identity within industrial zones

mass timber architecture communicates future readiness. It signals commitment to circularity and climate responsibility while delivering measurable environmental performance.

Building the Next Generation of Industrial Architecture

At Urban Climate Architects, we specialise in mass timber construction in the Netherlands and engineered mass timber industrial buildings across Europe.

This project in Voorhout demonstrates how large-span industrial structures can be realised in CLT without compromising flexibility, durability or commercial feasibility.

If you are exploring low-carbon logistics facilities, production halls or manufacturing environments in mass timber, we welcome the conversation.

07. Centrum Island

Location: Amsterdam, Netherlands

Program: 23 apartments and 2 commercial spaces

Area: 2.926 m²

Architects: Urban Climate Architects / MAATWorks

Status: 2024 - Preliminary Design

Centre Island in Wood is one of our most sustainable and forward-thinking projects, developed following the successful tender for plot 05-13. The project embodies our commitment to climate-positive architecture, combining innovation, circularity and human-centred design.

A Collaborative Vision

Commissioned by Lidewij Lenders of MAATworks, Urban Climate Architects joined forces to realise a future-proof residential building constructed entirely in cross-laminated timber (CLT).

The collaboration is rooted in a shared ambition: to create a healthy, contemporary living environment where sustainability and architectural quality reinforce one another.



Building in mass timber

Mass Timber forms the structural and spatial backbone of the project. Beyond its aesthetic warmth and tactile quality, wood significantly reduces embodied carbon and enables circular construction strategies.

Design Features

All-timber structural system
The primary load-bearing structure is realised entirely in CLT – a renewable, biobased material that stores carbon and allows for precision prefabrication.

Recycled hardwood façades

The exterior combines reclaimed hardwood with circular and biobased materials, creating a robust yet refined architectural expression.

Biobased insulation

Natural insulation materials ensure a healthy indoor climate while minimising environmental impact.

Designed for Tomorrow

Centre Island in Wood demonstrates how architecture can actively contribute to the transition towards a regenerative built environment. The project integrates sustainable materials, circular detailing and low-carbon construction into a cohesive architectural statement.

Rather than responding only to today's standards, the building anticipates future demands – environmentally, socially and technically.

It is not merely a mass timber building. It is a model for the next generation of sustainable urban living.

08. Circular Raw Materials Collection Station

Location: Lansingerland, Netherlands
Program: office and multifunctional space
Area: 425 m²
Architects: Urban Climate Architects
Status: 2025 - completed

Circular Design for the Lansingerland Raw Materials Collection Station

In collaboration with the Municipality of Lansingerland, Urban Climate Architects designed the new Raw Materials Collection Station in Bergschenhoek — a public building that embodies circular economy principles in both concept and construction.

The project demonstrates how circular design can be embedded at every level, from material strategy to architectural expression.

With a strong focus on biobased construction and mass timber, the building significantly reduces embodied carbon while functioning as a visible statement of sustainable ambition.



Mass Timber Construction and CLT

The main structure is realised entirely in solid mass timber, with cross-laminated timber (CLT) floor elements providing strength, stability and flexibility.

By choosing mass timber as the primary structural material, the project substantially lowers CO₂ emissions compared to conventional construction methods. The building actively stores carbon within its structure, contributing to a low-carbon future in which sustainability is the standard rather than the exception.

Biobased and Reclaimed Materials

Circularity guided every material decision. The design incorporates a high proportion of biobased and reclaimed materials. The façades are clad with locally salvaged paving stones, transforming a recovered material into a new architectural identity.

This approach not only closes material loops but also strengthens the social and environmental value of the project. Each component is selected with reuse, traceability and long-term adaptability in mind.

Low-Carbon and Nature-Inclusive

Sustainability extends beyond materials. The building is designed to minimise its ecological footprint while supporting biodiversity on and around the site.

By aligning with Paris Proof ambitions, the project contributes to climate targets through reduced embodied carbon and future-proof performance standards.

With the Raw Materials Collection Station, the Municipality of Lansingerland demonstrates that circular construction is not an abstract vision, but a practical and scalable approach to public infrastructure — one that makes the transition to a sustainable future tangible and visible.



09. Ringpass Delft hockey Clubhouse

Location: Delft, Netherlands
Program: Clubhouse hockey and after school care
Area: 1.270 m²
Architects: Urban Climate Architects
Status: 2025 - Preliminary Design

Urban Climate Architects is currently designing the new sports complex for Ringpass Delft. In close collaboration with Fokkema & Partners (interior design), SMNL Architects (exterior and overall design), Eric Luiten and BAS Sport, we are creating a place where sport, nature and sustainability reinforce one another.

Our ambition is clear: to design an inspiring and welcoming environment for athletes, visitors, after-school childcare groups and local residents – a place that thrives on energy, connection and movement.

Our Design Approach

The architecture is defined by timber, daylight and spatial generosity. Deep roof overhangs, supported by an elegant timber beam-and-column structure, provide shelter in all weather conditions. Carefully engineered, they regulate sunlight naturally – offering shade in summer and allowing warmth in winter.

The exposed timber structure, visible both inside and out, gives the building a warm, honest and crafted character. Biobased insulation materials, natural façade finishes and a green roof enhance both environmental performance and user experience.

This is sustainable architecture expressed through material clarity and spatial quality.

Embedded in Landscape

The new clubhouse is carefully integrated into its green surroundings. Positioned within a landscaped zone between the sports fields, the complex is framed by biodiverse “green islands” and connected by new walking and cycling routes.

A slightly elevated main volume offers open views across the pitches, strengthening the relationship between interior and exterior. The building does not sit on the landscape; it becomes part of it.

Sustainability extends beyond material choice and energy performance. A sedum and herb roof improves insulation and promotes biodiversity. Photovoltaic panels, energy-efficient systems and natural ventilation strategies reduce operational demand. Native planting, climbing greenery and nesting boxes for birds and bats enhance ecological value.

More Than a Clubhouse

The new Ringpass complex will be a vibrant community hub – a place for sport, relaxation and education. Alongside the hockey facilities, the building accommodates after-school childcare, strengthening its role within the neighbourhood.

Large windows draw daylight deep into the interior, while the warm material palette creates an inviting and contemporary atmosphere.

This is more than a sports building. It is a place where community, movement and nature come together.



01. The Urban Woods Amsterdam

Location: Amsterdam, Netherlands
Program: Residential building with commercial space on the ground floor
Area: 6.500 m²
Architects: Urban Climate Architects
Contractor: UCA Construction Team
Status: 2025 - Preliminary Design

The Urban Woods is a landmark in contemporary residential architecture and one of Europe's first ten-storey residential buildings constructed entirely in mass timber. Developed in collaboration with a multidisciplinary team of specialists, the project sets a new benchmark for sustainable high-rise living.

The building is founded on four core principles: the use of biobased materials, high energy performance, ecological integration and active social engagement around sustainable living.



Integrated Sustainable Technologies

A comprehensive set of advanced systems supports the building's performance:

- Rainwater collection and retention
- Greywater reuse
- Photovoltaic panels for on-site renewable energy generation
- Ground source heat pump for heating and cooling
- high-performance insulation
- Energy-efficient appliances
- Smart monitoring systems

Together, these technologies form an integrated and efficient building system in which architecture and engineering operate as one.

Residents receive real-time feedback on their energy consumption and environmental impact through the Urban Woods app, encouraging awareness and responsible behaviour.

Energy-Neutral Performance

The building is designed to operate as an energy-neutral residential complex. Solar panels, heat recovery from water and ventilation air, and a highly insulated envelope ensure strong seasonal performance.

Projected energy targets are:

- BENG 1: 66 kWh/m²
- BENG 2: 17 kWh/m²
- BENG 3: ≥ 80%

The ambition is full performance in use, with post-occupancy monitoring confirming operational results after the first year.

Water Strategy

Rainwater is collected and stored within retention layers integrated into the green roof. The harvested water is reused for irrigation and toilet flushing, reducing potable water demand by approximately 20% compared to the average household.

Our 2030 ambition is to increase this reduction to 30%.

Ground Source Climate System

A ground source heat pump provides stable indoor temperatures throughout the year, largely independent of external weather conditions. In summer, the system operates in reverse mode to deliver passive cooling, eliminating the need for conventional air conditioning while ensuring high levels of thermal comfort.

01. The Urban Woods Deventer

Location: Deventer, Netherlands
Program: Residential building with commercial space on the ground floor
Area: 10.250 m²
Architects: Urban Climate Architects
Contractor: UCA Construction Team
Status: 2025 - Preliminary Design

The Urban Woods is a landmark in contemporary residential architecture and one of Europe's first ten-storey residential buildings constructed entirely in mass timber. Developed in collaboration with a multidisciplinary team of specialists, the project sets a new benchmark for sustainable high-rise living.

The building is founded on four core principles: the use of biobased materials, high energy performance, ecological integration and active social engagement around sustainable living.



Integrated Sustainable Technologies

A comprehensive set of advanced systems supports the building's performance:

- Rainwater collection and retention
- Greywater reuse
- Photovoltaic panels for on-site renewable energy generation
- Ground source heat pump for heating and cooling
- high-performance insulation
- Energy-efficient appliances
- Smart monitoring systems

Together, these technologies form an integrated and efficient building system in which architecture and engineering operate as one.

Residents receive real-time feedback on their energy consumption and environmental impact through the Urban Woods app, encouraging awareness and responsible behaviour.

Energy-Neutral Performance

The building is designed to operate as an energy-neutral residential complex. Solar panels, heat recovery from water and ventilation air, and a highly insulated envelope ensure strong seasonal performance.

Projected energy targets are:

- BENG 1: 66 kWh/m²
- BENG 2: 17 kWh/m²
- BENG 3: ≥ 80%

The ambition is full performance in use, with post-occupancy monitoring confirming operational results after the first year.

Water Strategy

Rainwater is collected and stored within retention layers integrated into the green roof. The harvested water is reused for irrigation and toilet flushing, reducing potable water demand by approximately 20% compared to the average household.

Our 2030 ambition is to increase this reduction to 30%.

Ground Source Climate System

A ground source heat pump provides stable indoor temperatures throughout the year, largely independent of external weather conditions. In summer, the system operates in reverse mode to deliver passive cooling, eliminating the need for conventional air conditioning while ensuring high levels of thermal comfort.

12. Office Haagweg, Delft (NL)

Location: Delft, Netherlands

Program: Office building Urban Climate Architects

Architects: Urban Climate Architects

Contractor: SonZurf B.V.

Status: In design

From Residual mass timber to a Future-Ready Workspace

On Haagweg in Delft, we are designing our own office as a built manifesto for biobased and circular construction. It is not merely a workplace, but a living demonstration of how mass timber architecture can actively accelerate decarbonisation.

The building is constructed entirely in Circular CLT (C-CLT), developed in collaboration with TNO. Residual mass timber streams and locally sourced wood are upgraded into high-performance structural panels. Material that would otherwise be downcycled or discarded becomes the primary load-bearing system of a new commercial building.

In doing so, the project directly confronts one of the construction sector's most pressing challenges: embodied carbon. By rethinking sourcing, processing and structural application, the office operates as both workspace and research platform – proving that circular mass timber construction is not theoretical, but ready for implementation at scale.



Biobased, Circular and Paris Proof

The primary structure is realised in cross-laminated timber, forming a mass timber office that actively stores carbon within its frame. By applying Circular CLT (C-CLT), we reduce embodied emissions while strengthening regional mass timber supply chains and circular material flows in the Netherlands.

The design aligns with Paris Proof principles and long-term European decarbonisation targets. Operational energy demand is minimised through high-performance building services, integrated photovoltaics and an intelligent ventilation strategy that prioritises indoor air quality and energy efficiency.

This building does not simply house sustainable design practice – it embodies it.

A Living Laboratory for mass timber Innovation

By implementing Circular CLT in a realised project, we aim to accelerate confidence in circular mass timber systems across the market. The office functions as a living laboratory and open showroom for developers, municipalities, policymakers and industry partners.

Visitors experience first-hand how engineered mass timber buildings perform spatially, technically and environmentally. The exposed CLT structure makes the material logic visible. Construction becomes legible. Carbon storage becomes tangible.

In doing so, the project contributes to the broader transition towards a circular, biobased construction economy – in the Netherlands and beyond.

Healthy and Climate-Responsive

The architectural concept prioritises daylight, air quality and spatial clarity. Generous glazing draws natural light deep into the interior, reducing reliance on artificial lighting while enhancing comfort and wellbeing.

The surrounding landscape is designed as a biodiverse buffer that supports rainwater retention and mitigates urban heat stress. Climate-adaptive strategies are embedded from the outset, ensuring the building responds intelligently to its context.

Exposed mass timber surfaces introduce warmth and tactility, creating a calm and healthy working environment.

Smart, Efficient and Future-Ready

Photovoltaic panels power the building, supported by advanced systems designed for long-term performance and adaptability. Every design decision is evaluated against lifecycle impact, circular potential and future flexibility.

This office demonstrates how sustainable architecture in the Netherlands can move beyond incremental improvement towards systemic change. By combining circular mass timber construction, smart technologies and climate-responsive design, it establishes a replicable model for low-carbon commercial development.

13. Nieuw Boekhorst, Voorhout (NL)

Location: Nieuw Boekhorst, Voorhout
Programme: 114 apartments
Structure: CLT structural system
Architects: Urban Climate Architects
Status: Tender phase

CLT Housing in a Green Village Structure

Nieuw Boekhorst comprises 114 apartments designed as a coherent, landscape-led residential ensemble. The project demonstrates how CLT construction in the Netherlands can support village-scale density while delivering measurable carbon reduction and long-term spatial quality.

Rather than positioning the buildings as isolated objects, the scheme establishes a connected neighbourhood framework. Architecture, planting and circulation are carefully aligned to foster social interaction, legibility and environmental performance.

Cross-laminated timber forms both the structural backbone and the architectural identity of the development.



Advancing Mass Timber Housing in the Netherlands

Nieuw Boekhorst illustrates how mass timber housing can accelerate residential delivery while reducing embodied carbon. By aligning CLT construction, circular design principles and landscape integration, the project establishes a scalable model for low-carbon neighbourhood development.

At Urban Climate Architects, we continue to advance sustainable mass timber architecture and circular residential design across the Netherlands.



Structural Strategy: Cross-Laminated Timber

The primary load-bearing system is executed as a CLT structural frame. Compared with conventional concrete construction, this approach significantly reduces embodied carbon while storing CO₂ within the building fabric.

Adopting mass timber housing at this scale strengthens the position of CLT construction in the Netherlands as a mainstream residential solution. The lightweight structural system reduces foundation loads, accelerates construction and enables long-term adaptability.

The façades combine vertically articulated mass timber cladding with a refined brick plinth. Mass Timber introduces rhythm and depth, while the brick base anchors the buildings within their village context. Integrated façade planting and nesting provisions enhance biodiversity and ecological value.

This is mass timber architecture grounded in structural clarity and environmental responsibility.

Spatial Organisation and Community

Nieuw Boekhorst is conceived as a green, future-ready neighbourhood. The volumes are positioned within a framework of trees, hedges and permeable pathways, creating a walkable and socially cohesive environment.

Entrances are clearly defined and welcoming. Semi-recessed balconies animate the façades while maintaining privacy. The transition between public and private space is carefully layered through planting strategies and subtle level differences.

Internally, generous daylight circulation spaces encourage informal encounters. Broad staircases act as visible communal spines, strengthening natural surveillance and social cohesion. The design shows how density can coexist with a recognisable village identity.

Climate-Responsive and Circular by Design

Climate adaptation and circular construction principles are embedded throughout the development.

- Green roofs support rainwater retention and biodiversity.
- Photovoltaic panels provide on-site renewable energy generation.
- Permeable paving reduces surface water run-off and mitigates heat stress.
- Façade vegetation enhances passive cooling and ecological performance.

Material selection and detailing follow circular construction strategies, ensuring longevity, adaptability and reduced environmental impact. Structural design, landscape integration and energy systems operate as one coordinated low-carbon framework.

Residential Quality

The apartments range from approximately 76 to 77.6 m² and are designed for efficient, comfortable living. Each dwelling includes two bedrooms, a generous living area, a semi-recessed balcony, a bathroom and a separate WC.

Mass Timber construction contributes to a stable indoor climate and a perceptible sense of warmth. Visual connections to surrounding greenery strengthen the relationship between interior space and landscape.

14. Sint Jorisweg, Delft (NL)

Location: Sint Jorisweg, Delft, The Netherlands
Programme: Residential development
Number of homes: 14
Structure: Cross-laminated timber (CLT)
Insulation: Biobased materials
Client: Oostsingelinvestments B.V.
Architect: Urban Climate Architects
Completion: Anticipated 2028

Sustainable Living in mass timber and Green

Sint Jorisweg is a small-scale residential development of fourteen homes on the edge of Delft's historic centre, along the green corridor of the Oostsingel. Located within former orchard grounds and framed by mature trees, the project carefully balances heritage context with contemporary low-carbon construction.

This development shows how CLT construction in the Netherlands can support sensitive urban infill while delivering measurable embodied carbon reduction and long-term environmental performance.



Advancing Low-Carbon Infill in the Netherlands

Sint Jorisweg illustrates how small-scale mass timber housing can meaningfully contribute to decarbonisation. By aligning CLT construction, circular material strategies and landscape integration, the project establishes a refined model for climate-responsive residential infill.

Urban Climate Architects continues to advance sustainable mass timber architecture and circular housing development across the Netherlands.



Mass Timber Structure as Environmental Strategy

The homes are built using cross-laminated timber as the primary structural system. The CLT structure forms a renewable framework that actively stores carbon within the building envelope. Compared with conventional concrete construction, this mass timber approach significantly reduces embodied emissions while enabling precise prefabrication and efficient assembly.

Biobased insulation materials reinforce the circular construction strategy. Energy-efficient building services, high-performance envelopes and renewable, low-impact materials align the project with Paris Proof ambitions.

Here, CLT construction in Delft is not treated as innovation for its own sake. It is a clear and robust structural choice that integrates environmental performance, construction efficiency and architectural clarity.

Architecture Embedded in Landscape

The architectural language is restrained and contextually grounded. Warm brick façades, partly incorporating reclaimed materials, establish continuity with Delft's historic fabric. Vertical mass timber detailing introduces depth and tactility, while climbing plants such as clematis and honeysuckle gradually soften the elevations.

Generous glazing and mass timber window frames draw daylight deep into the homes and strengthen the connection between interior and garden. The material palette has been selected for durability and graceful ageing, ensuring that the development matures naturally within its orchard setting.

Green Urban Living

The site structure respects the existing mature trees and introduces permeable pathways and private gardens. Green roofs support rainwater buffering and biodiversity, while carefully integrated parking preserves the landscape character.

Nesting provisions for birds and bats are integrated into the façades, reinforcing ecological continuity. The project demonstrates how urban density and biodiversity enhancement can coexist within a historic context.

Residents benefit from a calm, green environment within walking distance of Delft's city centre. The development forms a gentle transition between urban fabric and orchard landscape, encouraging seasonal awareness and ecological connection.

Healthy, Future-Ready Homes

Each dwelling is designed to maximise daylight, natural ventilation and thermal comfort. Biobased insulation enhances indoor environmental quality, while the CLT structure contributes to material warmth and stability.

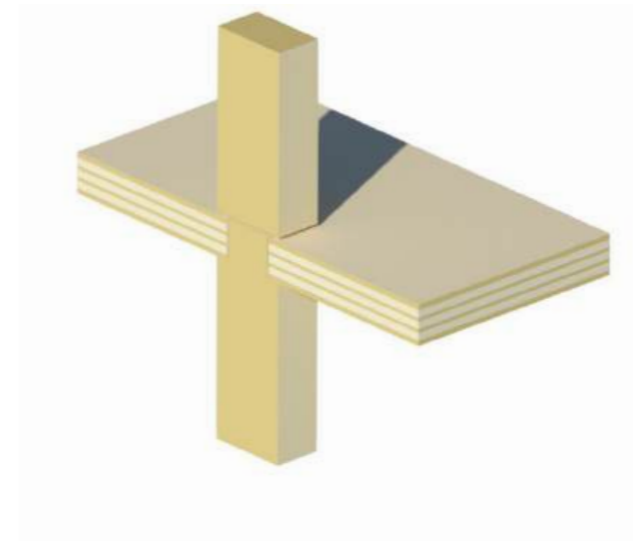
Efficient building systems and low-carbon materials reduce operational energy demand and long-term environmental impact. The homes are conceived as resilient living environments that respond intelligently to both climate and context.

15. Steenwijklaan, Den Haag (NL)

Location: Steenwijklaan, Den Haag, The Netherlands
Programme:
Number of homes:
Structure: Cross-laminated timber (CLT)
Insulation: Biobased materials
Client:
Architect: Urban Climate Architects
Completion: Anticipated 2028

Sustainable Urban Housing in Mass Timber

A timber residential building that combines urban densification with flexible and low-carbon housing. The project uses a modular CLT construction system to create adaptable apartments and studios with a strong focus on sustainability, circularity and healthy urban living.



Advancing Low-Carbon Infill in the Netherlands

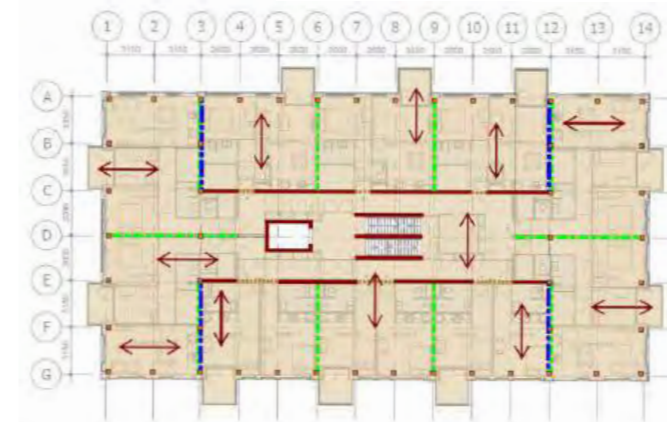
Steenwijklaan transforms a compact urban plot into a healthy and future-proof residential building in The Hague. The project combines efficient urban densification with a warm, human-scale living environment based on timber construction and adaptable housing principles.

The building is designed as a robust yet flexible residential structure with a clear wooden construction system and a diverse mix of apartments and compact studios. By combining CLT floors and walls with a modular structural grid, the design allows for efficient construction, reduced material impact and long-term adaptability.

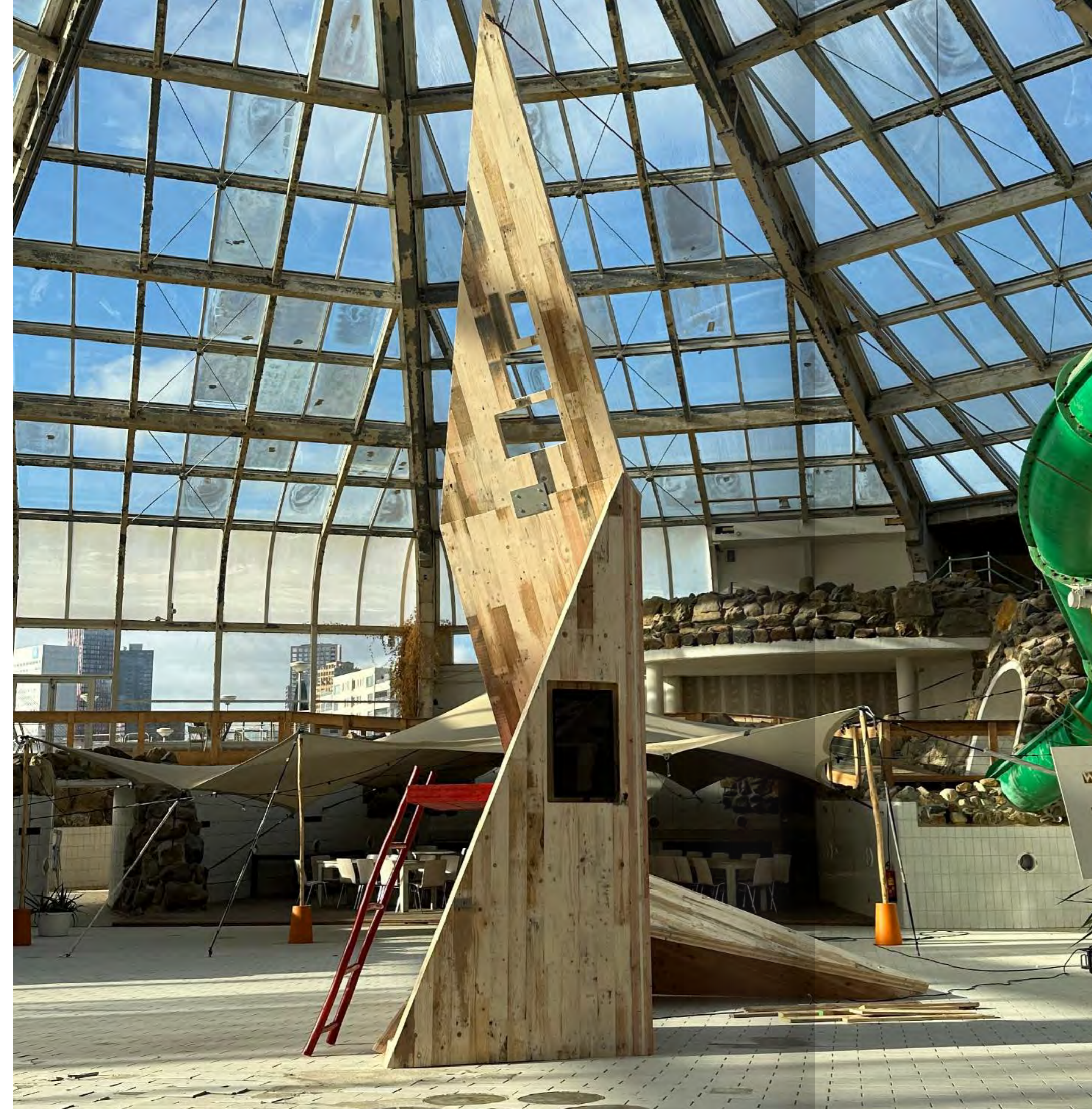
A central ambition of the project is to create high-quality urban housing while minimizing environmental impact. The timber construction significantly reduces embodied carbon and contributes to a more circular way of building. At the same time, generous daylight access, balconies and carefully articulated façades create a comfortable and recognizable living environment.

The plinth activates the street with commercial spaces and shared functions, while integrated bicycle parking, scooter storage and compact circulation zones support efficient urban living. Flexible layouts allow homes to evolve over time, making the building resilient to changing housing demands.

Steenwijklaan demonstrates how timber architecture, circular thinking and urban densification can come together in one coherent architectural vision: sustainable, buildable and deeply connected to the future of the city.



- kolom 360x360 (GL24)
- balk 300x400 (GL28c)
- windverband (staal)
- akoestische dilatatie
- ↔ CLT d=280mm



Pioneering Architectural Research and Innovation

At Urban Climate Architects, research is embedded in practice. We operate at the intersection of design, engineering and material innovation, developing new models for sustainable construction.

RESEARCH

15. Low Carbon Urbanism

From Building to Area: Steering Embodied Carbon from Day One

Research collaboration: BURA, LEVS Architects and Urban Climate Architects
2024–2026

Rethinking Carbon at the Scale of the City

As designers, we increasingly recognise that the greatest CO₂ impact does not originate within the building itself, but long before the first line is drawn. Not at the level of technical detailing, but in the way neighbourhoods and districts are structured.

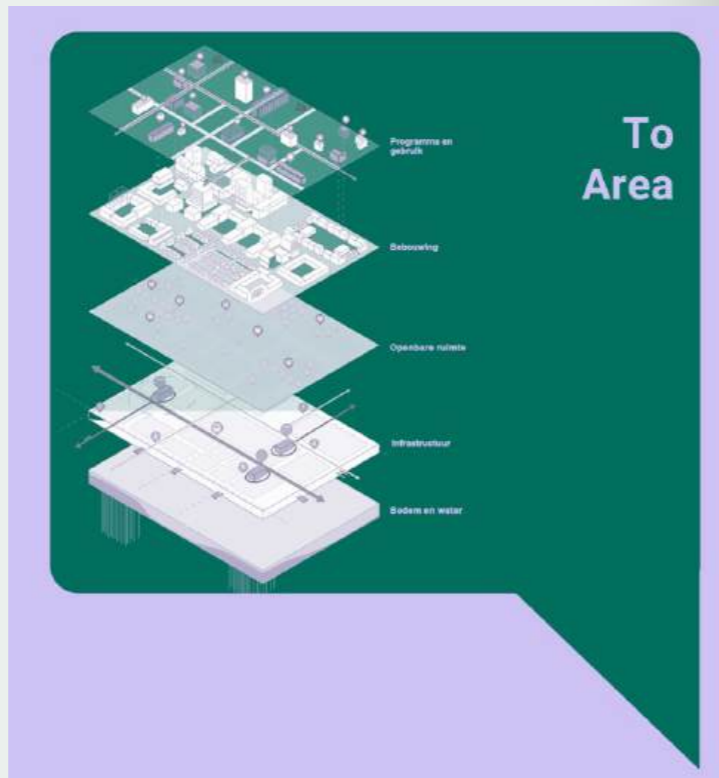
With Low Carbon Urbanism, we demonstrate how decisions about soil conditions, mobility systems, density and public space can determine the carbon footprint of neighbourhoods for decades. If we want to make a meaningful impact on climate performance, intervention must happen earlier – at the scale of the urban area itself.

Download the research here:



Key insights into Sustainable Urban Planning

- **Most CO₂ is locked in before the first building is designed**
Area-level decisions are made early and are extremely difficult to reverse later.
- **Biobased construction only delivers impact when aligned with urban structure**
A biobased building contributes positively, but it cannot compensate for inefficient spatial planning. Both scales must work together.
- **Compact cities perform better**
Fewer square metres per person mean reduced material use, less infrastructure and higher spatial quality. These findings reflect what we observe consistently in practice and across projects.



From Building to Urban Area

When mapping embodied carbon, the same pattern repeatedly emerges: the building itself is rarely the core issue – it simply enters the process too late.

Before a building is designed, key decisions are already made:

- the extent of infrastructure required
- how mobility is organised
- how soil and water systems are structured
- how many square metres per person are allocated
- which materials shape the public realm

Only afterwards do we design the building. That is where the critical misalignment occurs – and where the greatest opportunity lies.

Low Carbon Urbanism: Research by Design

Low Carbon Urbanism was developed by Urban Climate Architects in collaboration with BURA and LEVS Architects. By integrating design practice, urban planning and research, the project establishes a comprehensive understanding of low-carbon urban development.

The research included:

- ✓ Analysis of seven district profiles
- ✓ Development of three material scenarios (conventional, hybrid and biobased)
- ✓ Assessment of buildings, infrastructure and public space
- ✓ Integration of LCA data with urban design parameters

This approach provides a complete picture of CO₂ impact from district scale to building level – and identifies where the greatest leverage for carbon reduction can be found.

Conclusion

If we aim to reduce the CO₂ impact of cities, we must intervene earlier – not at building level, but at the scale of the urban area. Biobased and circular solutions achieve their full potential only within well-considered spatial planning.

Building less, sharing more intelligently and densifying in the right locations is what ultimately makes cities genuinely future-proof.



16. Handbook CLT Details and Mass Timber Design

Scalable CLT Detailing for Multi-Storey Timber Housing

This research focuses on the technical detailing required to scale high-quality mass timber housing in the Netherlands. Together with MAATworks, Urban Climate Architects developed an open handbook containing 30 fully developed LoD500 reference details for CLT and mass timber construction.

The handbook is based on the analysis of twenty completed timber residential buildings. By studying construction drawings, technical junctions, on-site performance and realised building systems, the research identifies practical solutions for recurring challenges in multi-storey timber construction.

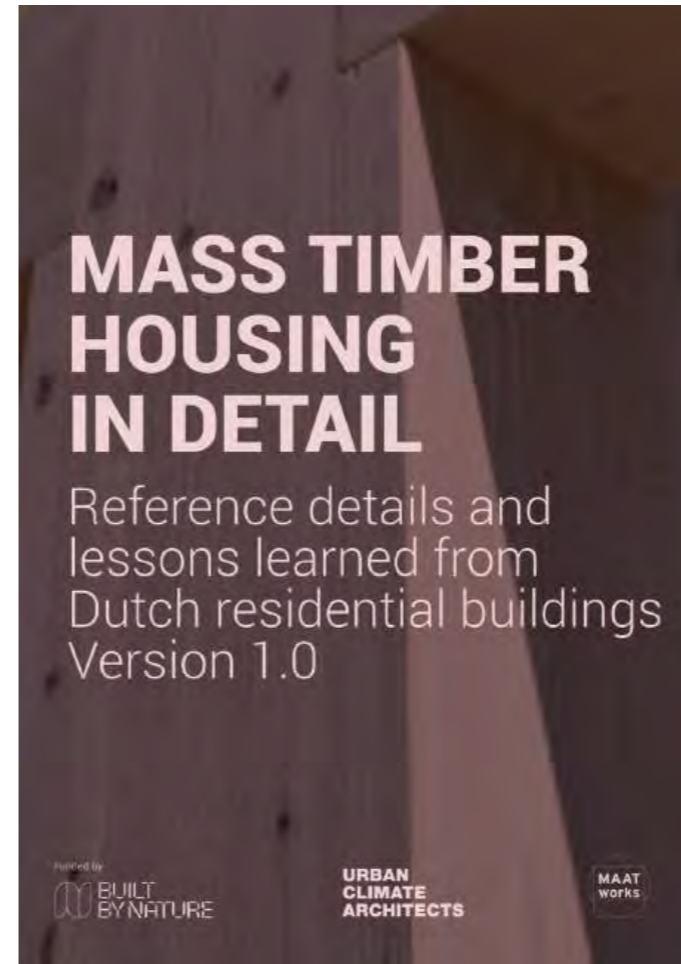
A major focus of the study is the role of detailing in building performance. In mass timber architecture, critical topics such as fire safety, acoustics, moisture protection, structural stability and installation integration are resolved at connection level. The quality of these junctions directly influences construction speed, durability, comfort and long-term building performance.

The research includes detailed studies of CLT wall-to-floor connections, façade interfaces, balcony structures, acoustic separations, installation zones and structural support systems. Particular attention is given to how different timber systems perform under real construction conditions and how details can be simplified for faster and more reliable assembly on site.

By developing repeatable and standardised details, the handbook helps architects, engineers and contractors reduce engineering time, minimise construction risks and improve coordination between disciplines. The details create a shared technical language for timber construction and support more efficient collaboration across the building process.

Beyond technical optimisation, the study also demonstrates how standardisation can accelerate the transition towards scalable low-carbon housing. Clear and proven detailing principles make mass timber construction more predictable, buildable and accessible for municipalities, developers and housing associations working on circular and future-proof residential developments.

The handbook positions CLT and engineered timber construction not as experimental alternatives, but as mature and scalable systems for healthy urban housing with significantly lower embodied carbon.

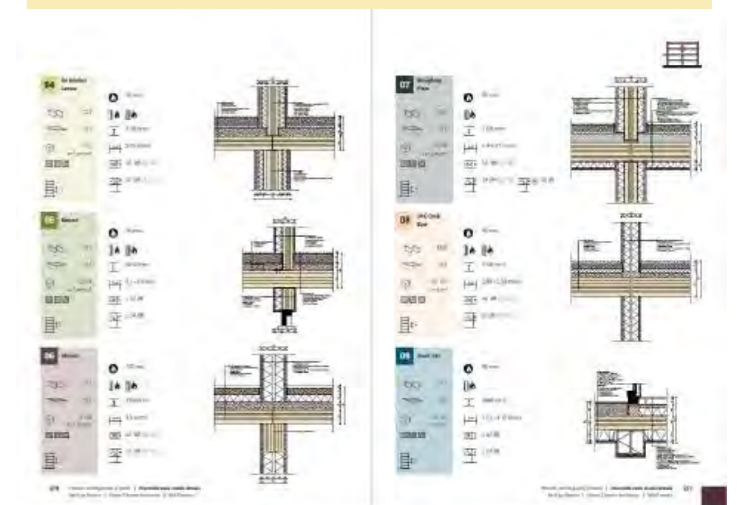
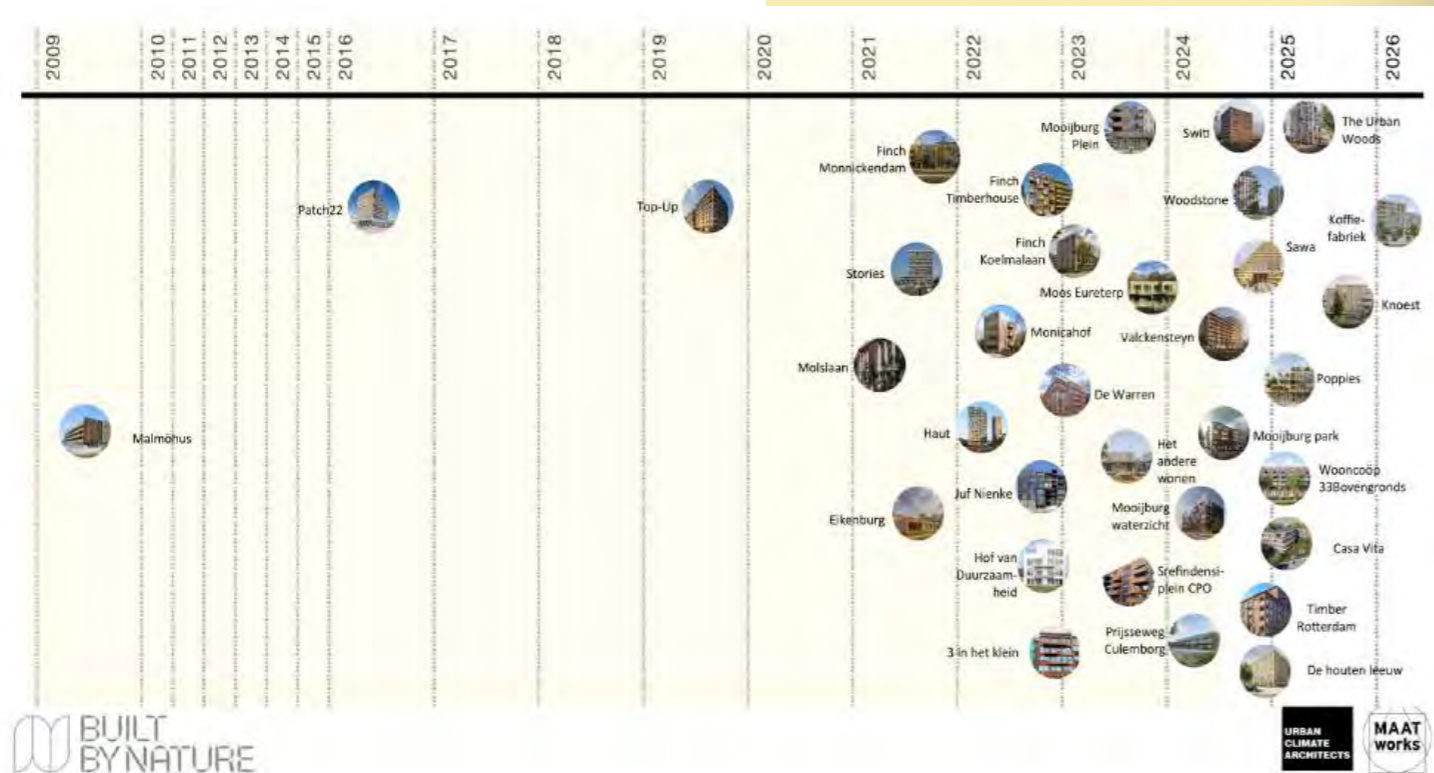
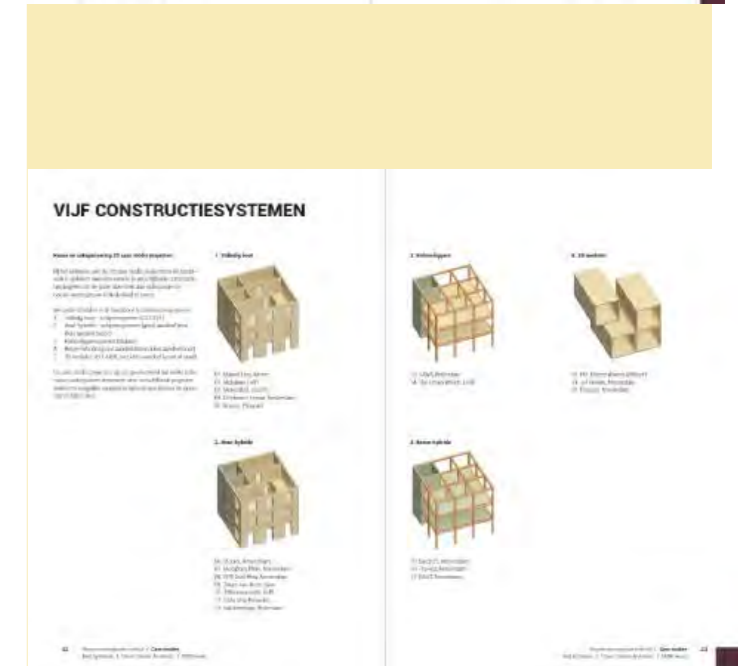


Download the Handbook here:



Learning from 20 realised mass timber residential buildings

- Section 1** – Why high-quality detailing is the key to scalable mass timber construction.
- Section 2** – Analysis of twenty realised mass timber housing projects.
- Section 3** – Building physics performance and technical insights.
- Section 4** – A solid foundation for faster, more predictable and affordable mass timber construction.



17. C-CLT: Waste mass timber Deserves a Second Life as High-Value Construction Material

From Waste mass timber to Circular Construction Material

Urban Climate Architects and TNO Develop C-CLT.

Secondary mass timber is set to play a decisive role in meeting the construction sector's sustainability targets. What was once treated as residual material is now being upgraded into high-value structural products – including circular CLT (C-CLT).

Within the TNO BioBuilt facility, TNO collaborates with industry partners to scale up this new generation of biobased construction materials. By combining applied research, industrial innovation and architectural expertise, the initiative accelerates the transition towards circular mass timber systems that reduce carbon emissions while retaining structural performance.

Niels Vonk (TNO) and Tim Vermeend (Urban Climate Architects) discuss how this collaboration bridges research and practice, and how C-CLT can contribute to a more circular, low-carbon built environment.

Pallet mass timber as Low-Hanging Fruit

Due to its uniform composition, pallet mass timber presents a clear opportunity for high-grade reuse in CLT production, explains Vonk. "Because pallets are manufactured to consistent dimensions, technical reuse is entirely feasible. The supply volume is also substantial: across Europe alone, an estimated 2.5 billion pallets are in circulation. A significant proportion are single-use and, once discarded, are either incinerated or processed into wood fibre panels – effectively a form of downcycling."

"Our aim is to reuse pallet mass timber at the same or an even higher level of value," Vonk continues. "We recently investigated its potential by manually dismantling single-use pallets, removing the nails and processing the boards into finger-jointed CLT panels measuring 1.2 by 3 metres. The results were highly promising."

Since then, a robotic process has been developed to efficiently remove metal fixings from pallet boards at scale. "The next step is to further industrialise and scale up this process," Vonk explains, positioning pallet mass timber as a viable and scalable feedstock for circular mass timber production.

The Future of mass timber Construction Is Radically Circular

The construction sector is on the brink of a fundamental shift. Materials long classified as waste are proving to be valuable resources for the next generation of biobased building products. Urban Climate Architects is working closely with TNO to accelerate this transition from linear consumption to high-value circular application.

C-CLT: Circular mass timber with the Performance of Virgin Material

One of the most promising developments is C-CLT (Circular Cross-Laminated Timber). These circular mass timber panels are composed of carefully selected and rigorously tested reclaimed mass timber layers. Once bonded, they form a strong, stiff and reliable structural element that delivers performance equivalent to conventional CLT – but within a fully circular material cycle.

Through TNO's advanced sorting and testing processes, reclaimed mass timber is upgraded to a high-grade structural application. This is not downcycling, but restoration to the highest level of use: load-bearing construction. The result is substantial embodied carbon savings and a meaningful step towards a new standard for circular building.

From Waste Stream to Structural Performance

C-CLT has proven to be remarkably versatile. It can be used for internal walls, floor elements and even load-bearing panels. Its structural strength, dimensional stability and fire performance position it as a credible alternative to newly manufactured CLT.

In doing so, it establishes a circular mass timber value chain that is both scalable and future-proof – one that keeps materials in use while maintaining technical integrity.

Translating Innovation into Practice

At Urban Climate Architects, research outcomes are integrated directly into live design projects. mass timber and biobased materials have long formed the foundation of our architectural approach. Through collaboration with TNO, C-CLT can now be incorporated at earlier stages of the design process, enabling buildings that are lighter, healthier and more circular from the outset.

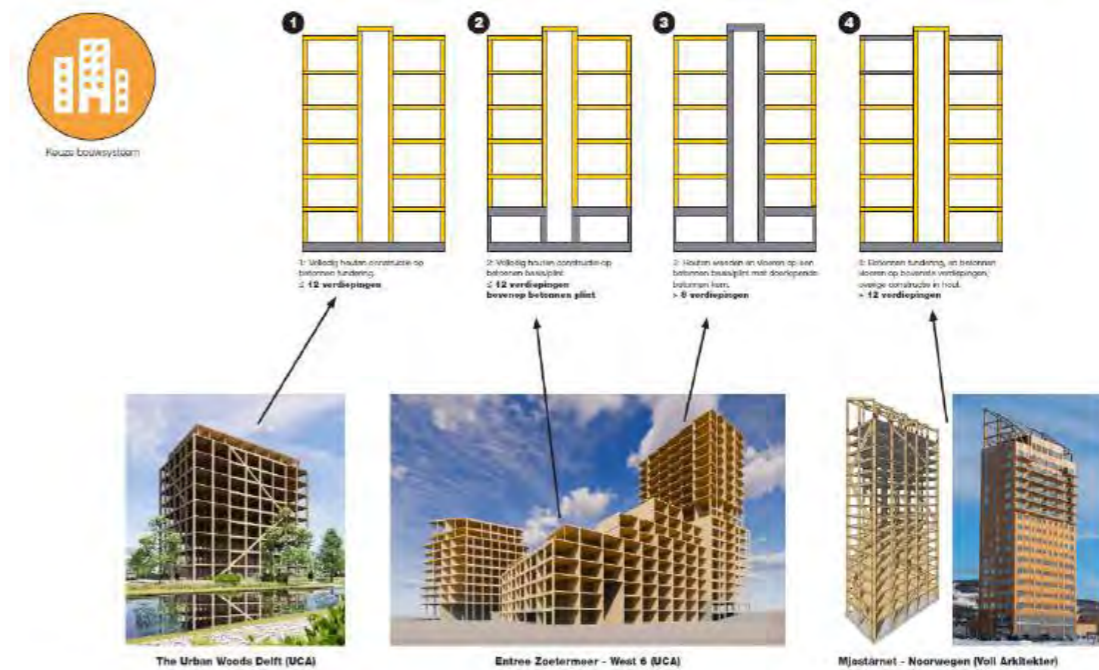


Circular mass timber in the Structural Frame

As illustrated below, C-CLT panels are visibly applied within internal structural walls. The warm texture of the mass timber, the solid columns and the clarity of the open construction demonstrate how circular mass timber systems can be both structurally robust and architecturally expressive. This is the future Urban Climate Architects and TNO are actively shaping together.

Circular mass timber is Not a Trend – It is the Next Standard

With innovations such as C-CLT, the sector moves decisively towards a construction model in which materials continue to circulate and buildings contribute positively to their environment. Urban Climate Architects remains committed to advancing this shift – through design, material innovation and ongoing collaboration with knowledge partners such as TNO.



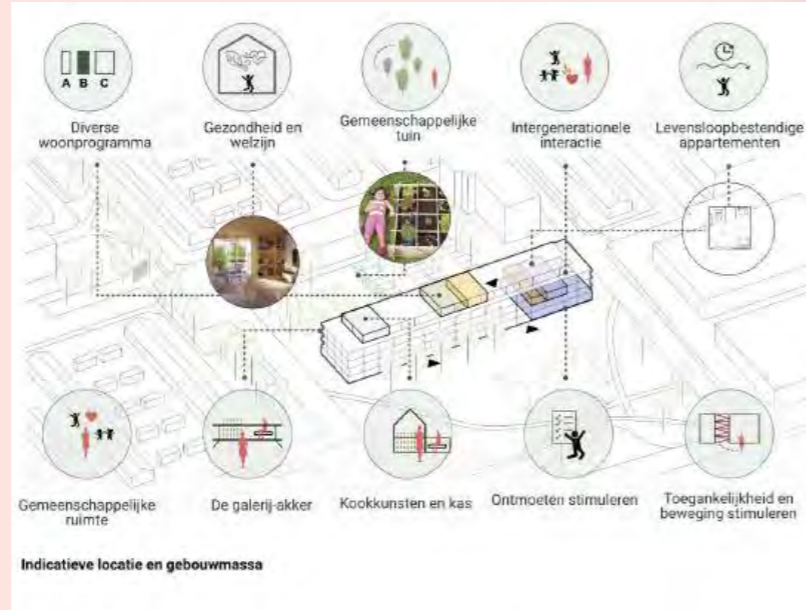
18. The Matchmaker concept

Sustainable Living Together in the Neighbourhood

Matchmaker responds to a growing demand from independent older people who are proactively seeking a future-ready home, yet struggle to find suitable options within their own neighbourhood. By offering affordable, comfortable and healthy homes combined with shared amenities, the move becomes both attractive and straightforward – without leaving the community they know.

As residents move into these new homes, existing family houses are released back to the local market, creating opportunities for first-time buyers and young families to find homes that better suit their needs.

A Matchmaker project is ideally developed in neighbourhoods with a relatively ageing population and a limited supply of accessible, future-ready housing. By actively involving local residents, their ideas and housing preferences are embedded in the development of the concept.



Key Features of the Matchmaker Concept

Social Interaction

Shared lounges, generous access galleries with seating areas and communal gardens encourage everyday encounters and strengthen social bonds. The inclusion of a childcare facility within the building fosters meaningful connections between generations.

Health and Wellbeing

Homes are designed using natural, breathable materials, with careful attention to daylight, ventilation and indoor air quality. Private outdoor spaces with open views enhance comfort, while an inviting stair design encourages daily movement and physical activity.

Lifetime-Adaptable Homes

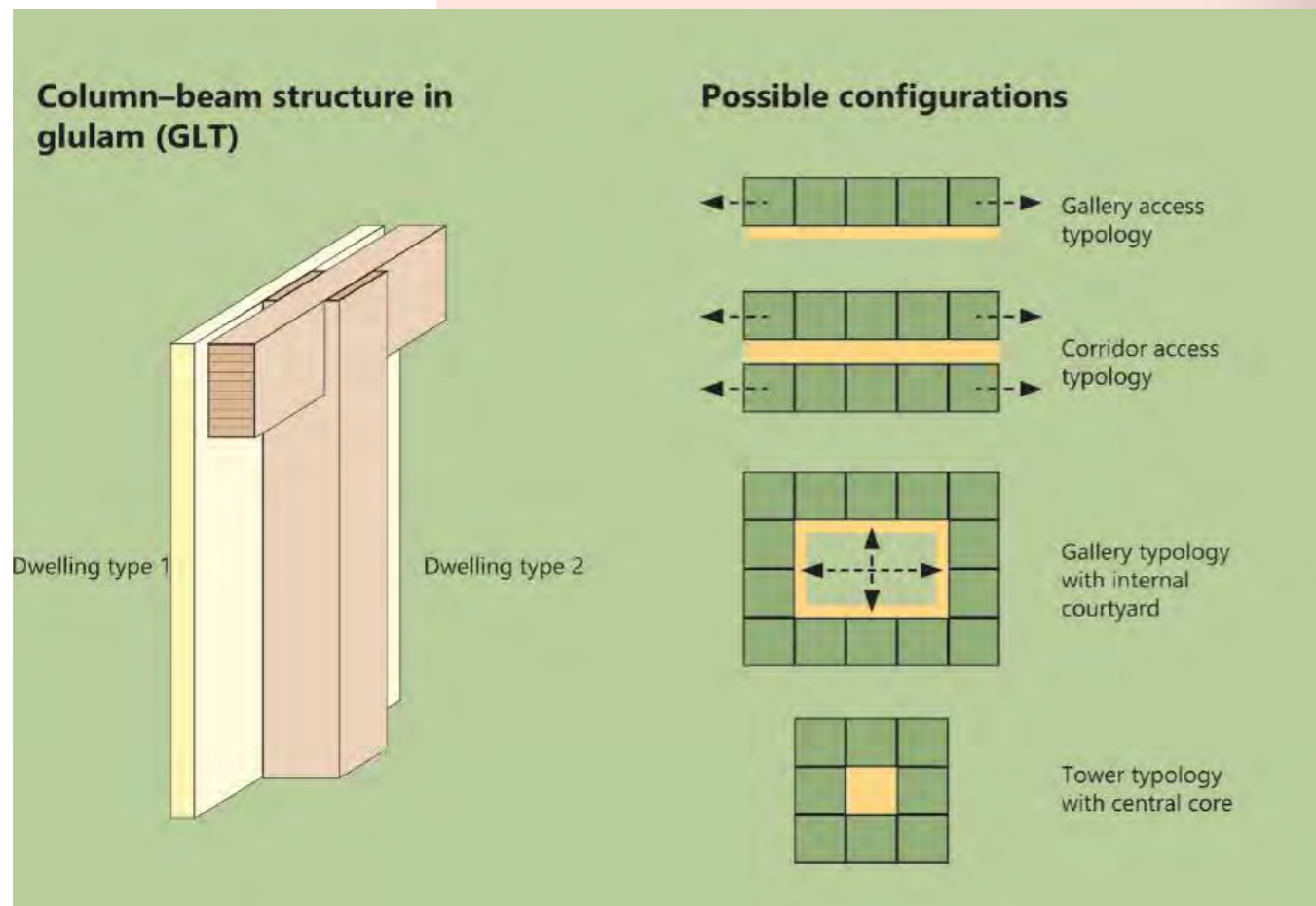
Apartments are fully accessible and designed to accommodate changing needs over time, with particular attention to spatial quality, circulation and ease of use.

Future-Ready and Nature-Inclusive

Green roofs, on-site water retention and solar energy systems contribute to climate resilience and reduced environmental impact. Sustainable mobility is supported through bicycle sharing, dedicated mobility scooter storage and strong connections to public transport.

Constructed using innovative CLT timber structures and biobased materials, the project achieves a significantly reduced environmental footprint and applies a whole-life carbon approach.

Through the shared vision of Achmea Real Estate and Urban Climate Architects, Matchmaker creates a sustainable and socially connected living environment where older residents can continue to live independently, actively and in close connection with their community.



Example of lifetime homes in a column-beam structure



19. DURA Mass Timber Housing Study

Comparative Research into Timber Housing Systems

The study investigates how different timber construction systems perform across a wide range of architectural, technical and environmental criteria. Rather than focusing on a single solution, the research compares multiple structural typologies – including CLT wall systems, GLT column-beam structures and lightweight timber frame construction – to understand their spatial, economic and construction-related implications.

Each system is analysed through a comparative framework assessing flexibility, structural efficiency, façade freedom, construction speed, embodied carbon, acoustic performance and suitability for urban housing typologies. By combining technical analysis with reference projects and spatial studies, the research creates a practical decision-making tool for future timber housing developments.

The study demonstrates that no single timber system is universally optimal. CLT systems offer structural clarity and rapid assembly, while GLT structures provide greater openness and flexibility. Hybrid systems balance spatial freedom with structural efficiency, and lightweight timber frame systems offer highly efficient prefabricated solutions with integrated insulation and reduced material weight.

By mapping these systems against different residential typologies – from corridor buildings and gallery housing to compact urban towers – the research identifies how timber construction can respond to varying densities, budgets and urban contexts.

The result is a scalable framework for low-carbon apartment buildings that supports faster construction, reduced material impact and more adaptable forms of urban living.

The research positions timber architecture not as a niche alternative, but as a realistic and scalable strategy for future-proof urban housing.



Mass Timber Housing Study

This research-driven timber housing study explores how industrialised timber construction can accelerate the transition towards low-carbon residential development in the Netherlands.

Developed in collaboration with Dura Vermeer, the study analyses a wide range of timber building systems for apartment buildings, including CLT, GLT and timber frame construction. The research compares structural principles, spatial flexibility, construction efficiency, acoustic performance and material impact across multiple residential typologies.

The study investigates how timber systems can support scalable urban housing while maintaining architectural quality, adaptability and circular construction principles. From compact corridor buildings to gallery housing and residential towers, each system is evaluated through structural logic, prefabrication potential and spatial performance.

By combining technical design rules with reference projects and construction detailing, the study creates a practical framework for future timber housing developments. It demonstrates how engineered timber can reduce embodied carbon, shorten construction time and create healthier living environments with a lower environmental footprint.

The research positions timber architecture not as a niche alternative, but as a realistic and scalable strategy for future-proof urban housing.



Kern	CLT (Schijven)						GLT (Kolom-Balk)						HSB					
	Hout			Hybride (Betonnen kern)			Hout			Hybride (Betonnen kern)			Hout					
	Overspanning gevel-gevel	Overspanning bouwmuur-bouwmuur	Overspanning gemengd	Overspanning gevel-gevel	Overspanning bouwmuur-bouwmuur	Overspanning gemengd	Stabiliteit in de gevel	Stabiliteit in de gevel & in de kern	Stabiliteit intern & in de kern	Combi. kolomen & CLT wanden	Zonder balken	Stabiliteit in de kern	Combi. kolomen & CLT wanden	Zonder balken	Houtskeletbouw	LVL	Houtskeletbouw wanden & CLT vloer	Combi. Kolomen, HSB wanden & CLT vloer
0 tot 3 bouwlagen	0	0	0	0	0	0	++	++	++	++	+	0	++	++	++	0	++	++
ontluiting + hoogte gebouw/vorm	0	0	0	0	0	0	++	++	++	++	+	0	++	++	++	0	++	++
kosten	-	-	++	-	++	0	++	-	-	0	-	-	++	-	++	0	+	0
SO	-	0	-	-	0	-	-	++	-	-	-	-	0	-	-	++	++	-
aanbaarheid	0	0	0	0	0	0	++	++	++	++	+	0	++	++	++	0	++	-
individuele gevelindeling / architectuur	++	++	0	0	0	-	0	-	++	+	0	++	0	++	0	0	-	0
concept: welke concepten zijn mogelijk	0	0	-	0	++	++	0	0	++	++	+	0	++	0	++	0	++	+
verbruik hout	++	-	-	0	-	-	++	-	++	0	+	++	-	++	0	0	++	-
voorbereiding + bouwsnelheid	++	-	-	0	-	-	++	-	-	++	-	++	++	-	-	0	-	++
afmetingen	0	0	-	-	++	++	0	0	0	-	0	-	++	+	0	++	0	-
voorsnelheid	0	0	0	-	0	0	0	-	-	++	++	++	+	0	++	0	-	+
afwezig brandwerendheid	0	0	0	0	0	0	++	++	++	++	+	0	++	++	++	0	++	-
afwezig akoestiek	++	+	0	++	0	-	0	0	0	-	0	0	-	++	++	++	+	-
afwezig balkons	0	-	0	0	++	0	0	0	++	+	++	-	-	++	-	++	0	0
afwerking	+	++	-	0	++	-	++	0	-	0	0	++	0	0	++	-	0	-
afwezig laties	0	++	-	++	0	-	0	0	++	0	-	0	0	0	++	+	++	++
afwezig weersinvloeden tijdens de bouw	++	0	0	++	-	0	-	-	++	-	++	0	-	0	0	+	++	-



WATTOURSLIVE

19.Zeesluisweg

Location: Den Haag, Netherlands
Program: Residential building
Area: 10 000 m²
Architects: Urban Climate Architects
Client: Brick-Stone
Status: 2023 under construction
Budget: 32 million euros

Urban Infill in The Hague

Set within the dense urban fabric of The Hague, this residential project carefully balances contextual sensitivity with contemporary expression.

Located on a series of narrow plots, the design responds to the scale and rhythm of its surroundings while introducing a refined architectural identity.



“ Even in a highly urbanized location, you can still feel like you're at the beach, surrounded by greenery and sand. ”

The façade is articulated into three distinct vertical sections, each differentiated through variations in window proportions, colour, material and texture. These subtle contrasts create a cohesive composition that reflects the layered architectural character of Scheveningen.

To integrate seamlessly with the surrounding streetscape, the upper two floors are set back. These setbacks reduce the perceived mass of the building, restore a human scale at street level and strengthen the relationship with neighbouring structures.

Architecture

The main entrance forms a generous, 2.5-storey-high gateway – a spatial gesture that establishes presence while inviting passage through the building. The entrance also connects the street to the landscaped courtyard beyond, offering a framed glimpse of the dune-inspired garden.

Material selection plays a key role in anchoring the building within its context. Brick façades resonate with the architectural language of the neighbourhood, while their dialogue with the dune landscape introduces a contemporary layer. The result is a balanced interplay between heritage and innovation.

Ground Floor Strategy

The design responds directly to the site's subtle changes in ground level. Some apartments are positioned slightly below or above street level, creating varied relationships with the public realm while maximising direct access.

Dwellings facing the inner garden enjoy seamless transitions to the shared landscape without level differences. This nuanced approach activates the ground floor and generates a diverse range of spatial experiences within the building envelope.

Apartment Diversity

The project offers more than 19 distinct apartment typologies, accommodating a broad spectrum of residents.

This diversity in size and layout ensures flexibility and inclusivity, allowing different household compositions to find a home that suits their lifestyle within the same architectural framework.



20. Woldring

Location: Groningen, Netherlands
Program: Housing, commercial, offices and fitness
Area: 28 300 m²
Architects: Urban Climate Architects
Client: Woldring Verhuur
Status: 2019
Budget: 36 million euros

Local Resources, Local Identity

In Groningen, in the north of the Netherlands, The Mass rises from the very soil on which it stands. The building is constructed in bricks fired from locally sourced clay, ensuring optimal use of regional materials and reinforcing a strong connection to place.

The form of the building is carefully shaped to respond to its context. It shields residents from highway noise while opening towards the water. The brick envelope wraps around a bright, white courtyard that captures sunlight and reflects daylight deep into the interior.

The sculpted volume not only aligns with its surroundings but also creates dynamic shadow patterns, ensuring that all dwellings receive direct daylight. The building's orientation blocks prevailing winds approximately 90% of the time, improving outdoor comfort and contributing to a healthy living climate.

A ground source heat pump provides heating throughout the building, while photovoltaic panels generate renewable electricity for the apartments.



The Green Oases

Stretching 126 metres in length, the elevated courtyard forms a continuous green oasis above the parking level. Planters contain a diverse mix of hardy species selected for resilience and biodiversity value.

An elegant pergola with climbing plants and integrated LED lighting enhances both atmosphere and usability. The second-floor courtyard becomes a sheltered, sustainable communal landscape within the urban setting.

Climate and Biodiversity

The green courtyard contributes to CO₂ reduction, supports biodiversity and mitigates urban heat stress. In doing so, the project aligns with several Sustainable Development Goals and demonstrates how residential developments can actively improve environmental performance.

Designed for Community

Located in a vibrant student city, the housing is tailored to young residents and recent graduates. The programme integrates shared facilities such as fitness and retail spaces, encouraging interaction and social exchange.

Wide corridors and open visual connections promote encounters between residents, strengthening the communal character of the building.

Light as a Design Driver

The building's geometry results from extensive studies into daylight and acoustics. Interior spaces are flooded with natural light, amplified by white finishes and wide circulation zones that reflect daylight deeper into the plan.

The architectural form balances two ambitions: maximising light while minimising noise.

Tectonic Brickwork

The brick façade expresses craftsmanship and material intelligence. At lower levels, protruding bricks create depth and provide shading. Higher up, the brickwork becomes more refined and lighter in expression.

This gradual transformation enhances the building's tectonic quality and reinforces its connection to the material landscape from which it originates.

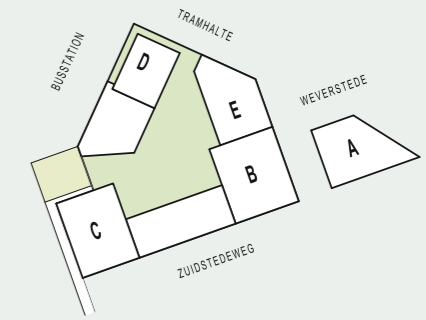


21. Weverstede

Location: Nieuwegein, Netherlands
Program: Residential building with public commercial plinth
Area: 36 100 m²
Architects: Urban Climate Architects
Client: Fresch Real Estate
Status: 2023 - under construction
Budget: 60 million euros

The rejuvenation of Nieuwegein's Stationsgebied is underway, with the west side now taking the spotlight after the successful development of the east side, which introduced the modern Cityplaza shopping center, residences, and the new city hall.

The west side revitalization, featuring The New Citizen, prioritizes green spaces, with a remarkable 75% increase in greenery. Its central location, not only within Nieuwegein but also in the heart of the Netherlands, further enhances its appeal.



Here's a brief overview of the project:

- 128 apartments, spanning 3 to 4 distinct types
- 2-, 3-, and 4-bedroom apartments
- Private sector rentals
- Living spaces ranging from 56 m² to 84 m²
- Underground parking facilities
- Commercial spaces on the ground floor

■ Enhancing Urban Living

The transformation of Nieuwegein's Stationsgebied aims to create a vibrant, appealing, greener, and more sustainable city center. This initiative includes the development of a modern tram and bus interchange, complemented by residences and enhanced pedestrian and cycling pathways.

■ Nurturing Housing Demand

As in many Dutch cities, Nieuwegein faces high demand for housing, and its city center is an ideal canvas for new residential developments. Proximity to shops, amenities, and public transportation makes it an attractive choice. The project involves the design of 450 homes, distributed across a block with two prominent height accents and a standalone tower that serves as a landmark.

■ Architects' Role

Urban Climate Architects has played a pivotal role in shaping this urban vision. Since 2017, in close collaboration with Fresch Real Estate and the Municipality, they have been working diligently to bring this development to life. The approach, focusing on early-stage integrated planning involving developers, the Municipality, and architects, has successfully addressed challenges related to mobility, housing preferences, building volumes, maximum heights, and transportation.

“ We care not only about the quality of space for people but also for every living being. Birds, butterflies, bees will find their place. We create a space in which we coexist with nature. ”

■ **Energy:**

Energy performance

- Facade Rc=5,0
- Opening U=1,1
- Roof Rc=6,0
- Floors Rc=3,5
- Air tightness Qv <10
- Sun shading on sun-exposed facades (E-W-S)
- Heating district heating or collective WKO (Note: WKO boiler required)
- Generation 40%

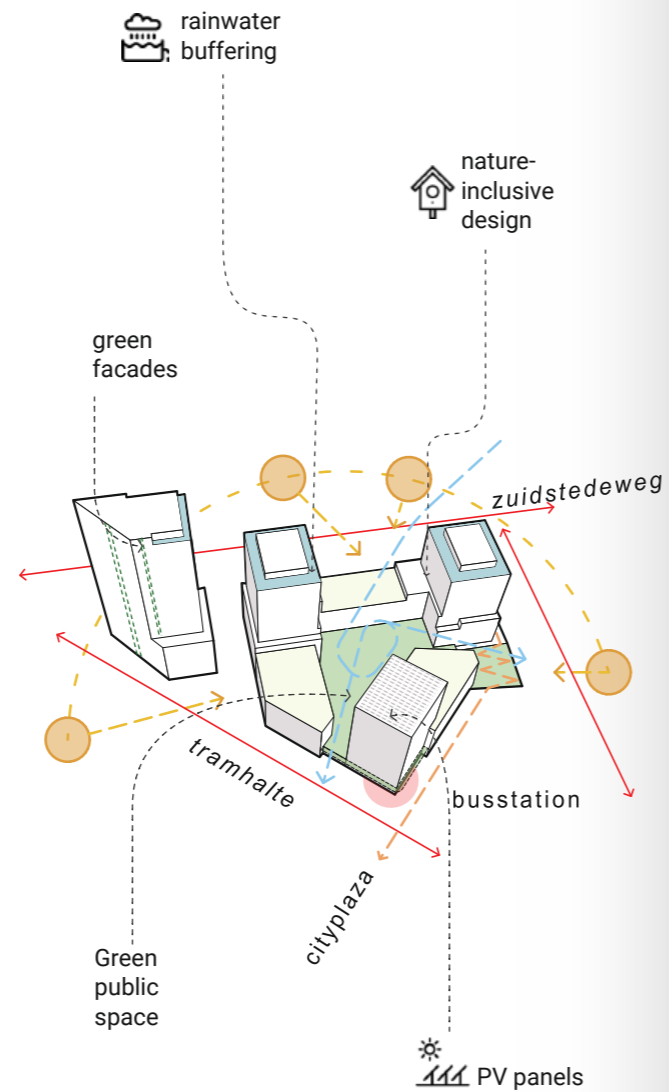
■ **Environment:**

Environmental performance

- MPG score < 0.50 €/m2 GFA.year
- Limit concrete use
- Circular material use*
- Disassembly index >0.8
- 50% Reusable material
- <50% Recycled material
- High share of Biobased material
- Sustainable produced wood >95%

■ **Future value**

- Future orientation* - Building is adaptable
- Flexibility* - Framework allows changes and connections between homes
- Value of experience* - Dynamic environment with a beautiful design



■ **Green, Sustainable, and Innovative**

The project upholds a high standard of circular, nature-inclusive, and climate-adaptive construction. This commitment is evident in the design of public spaces, private rooftop gardens, and innovative water solutions.

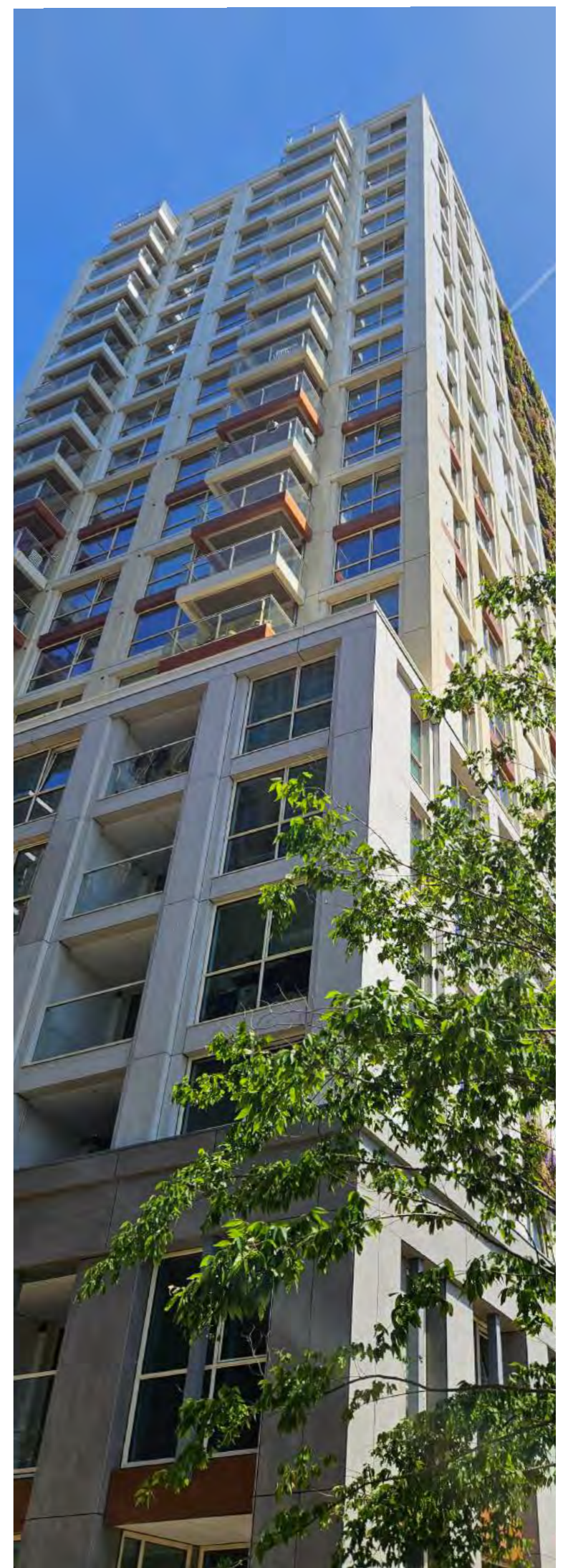
Green roofs facilitate water buffering and open doors to explore mass timber based structural elements. Despite the high-density, compact construction, the building introduces an astounding 75% increase in greenery to the area, thanks to its green facades, rooftop gardens, inner courtyard, and ground-level greenery.

■ **Smart Mobility and Accessibility**

The project incorporates intelligent mobility solutions, such as shared car services and well planned bicycle parking facilities within the block. Furthermore, its proximity to public transportation, including the express tram and bus, ensures optimal accessibility and access to amenities.

■ **Digital Engagement**

In response to the COVID-19 pandemic, our project embraced innovation by fully digitizing the planned presentation and community engagement. A 4D virtual tour and project details are available on the Municipality's website, enabling residents to explore the plans, ask questions, and provide feedback for consideration in the ongoing development process.



22. Jullensblok

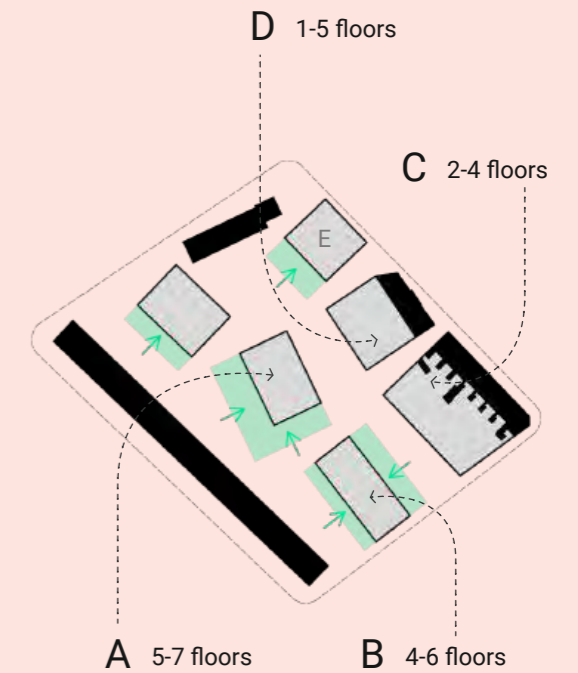
Location: Groningen, Netherlands
Program: housing, parking
Area: 20 000 m²
Architects: Urban Climate Architects
Client: Veldboom Vastgoed
Status: project phase - 2020
Budget: 35 million euros

Revitalization of the Groningen Industrial Area: From Old Industrial Zone to Dynamic Residential Area

The former industrial park on the Jullensstraat in Groningen is undergoing an impressive transformation. What was once a place for old factories and outdated infrastructure is now being redeveloped into a vibrant, modern residential area. This project is a perfect reflection of Groningen as a city where the connection between technology and progress is key. The new district offers a fresh boost to the cityscape, with sustainable designs that integrate seamlessly into the environment.

An Innovative Design for the City of the Future

The design of the new housing project is both functional and innovative. Four modern residential blocks rise on top of an underground car park, keeping the ground level car-free. This contributes to a safe and pleasant living environment, where residents can fully enjoy the outdoors without the noise and pollution of traffic. Through the smart orientation of the blocks, the view over Groningen is optimally used, and at the same time a connection with the nature in the area is created. These outdoor spaces offer residents the chance to relax and enjoy the peaceful, green surroundings.



Compact and Green Living Space in Jullensstraat

One of the main features of this project is the compact design of the residential blocks. Due to the compactness of the buildings, the space around the blocks is used to the maximum for green areas. This provides a strengthened connection with the environment and a sense of community among residents. In addition, the Jullens blok will have a lush, green courtyard where residents can retreat into nature and enjoy the peaceful, aesthetically pleasing environment.

Sustainability and a sense of community in the neighborhood

The design includes not only a varied selection of perennials and flowering shrubs, but also mobile tree pots and raised plant borders that make the area extra inviting. These sustainable elements not only contribute to the aesthetics of the neighborhood, but also to the biodiversity and well-being of residents. Connecting with nature is thus achieved not only literally, but also figuratively.

The revitalization of this Groningen industrial area is a textbook example of how modern architecture and sustainable design reinforce each other. This project not only offers new homes, but also creates a new lifeline for the city of Groningen. The plan reflects the commitment to a perfect balance between environmental responsibility, modern housing needs and a sense of community where everyone feels welcome.

Urban Climate Architects has the honor of realising this innovative project, based on a preliminary urban study by MINT Architects. The project foresees the redevelopment of the site in the Helpman district as a public space, above a shared parking basement, where four to five sustainable residential blocks will be built.

23. The Pavilion

Location: Groningen, Netherlands
Program: horeca
Area: 1179,0 m²
Architects: Urban Climate Architects
Client: NTC Vastgoed
Status: 2016 - completed
Budget: 4 million euros

The lake at Paterswolde is a truly serene place. Every morning, the mist that forms above the water, slowly dissolves between the trees. This is the main concept for the 'Pavilion of the Lady'.

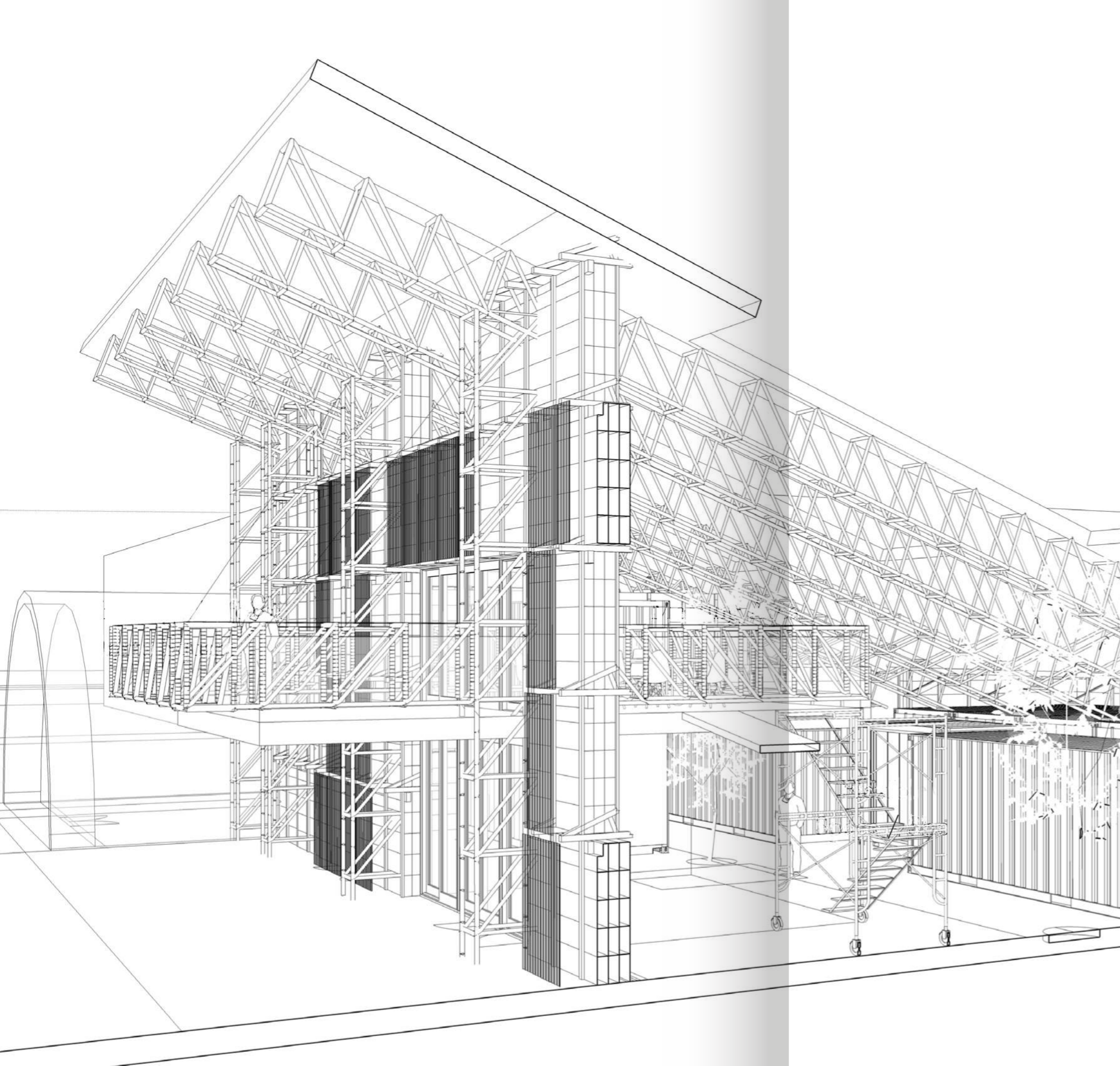
Its minimalist design ensures that there really is no building at all. It is just mist that lands here. It slowly moves over land and it will eventually lift into the sky.

Imagine a building that feels like a part of nature itself. That's the Mist Pavilion. It's designed to blend in with its surroundings, almost like it's not even there. The outside is mostly see-through, made of glass, so you can see the world outside from every angle. The only parts that aren't see-through are the facilities inside.

The Pavilion is light and airy, like it's floating above the ground. And when it's not needed, windows can fold, opening to let nature take center stage. The shape of the Pavilion is special too. It curves up at the edges, giving it a magical, floating feeling. And the windows on the outside come in all different sizes and shapes, like they're playing a song together.

The paved terrace seamlessly merges into the natural landscape, providing a smooth transition from the built environment to where the pavilion is situated. Meanwhile, the untouched shores preserve the biodiversity of the area. Even though it looks free and easy, a lot of thought went into building it. The construction system and grid doesn't match the pattern of the windows on purpose to achieve even more disconnection between the two elements, showing that sometimes breaking the rules can make something even more beautiful.





**See our
first
circular
building.**

CIRCULAR

24. Stadslab

Location: Groningen, Netherlands
Program: offices, horeca, public stage and event spaces
Area: 3288 m²
Architects: Urban Climate Architects
Client: Keypro
Status: 2018
Budget: x million euros



“ End of life cycle?
It's just the beginning. ”

The circular Stadslab Groningen has been realised on the former Suikerunie site. The initiator Keypro from Groningen had the idea to realise a temporary icon where creative companies from the manufacturing industry in Groningen could come together. The Suikerunie site offered a good opportunity for this. After the demolition of the Suikerunie factories, the site was set aside for a long time, development is only planned for over another 15 years. The municipality asked for a temporary interpretation of the site.

Together with the initiators, we designed the building with temporary and reusable materials that refer to the manufacturing industry. The outer frame of the building comes from a pop venue and the giant yellow doors slide on old NS train wheels.

Stadslab consists of three parts: two cylindrical sheds of 520 square meter each with an intermediate piece of 600 square meters. This large hall serves as a meeting place and restaurant, but can also be opened in its entirety to create a stage to the city. As a result, the space is transformed into a large stage in no time and it is very easy to convert the Stadslab into a festival location.



A few words in conclusion

At Urban Climate Architects, we are building the world according to our vision of the future. We see the real estate market as a tool for constructing a sustainable future accessible to everyone—for the sake of our children, future generations, and the entire planet.



We focus on four essential aspects:

■ First, do no harm:

Our primary goal is environmental stewardship and the future of our planet. In the construction industry, we seek solutions that enable building new homes without harming the climate.

■ Delivering new quality in construction without changing the price:

We build quickly, while minimizing environmental impact. We make quality housing achievable within standard budgets.

■ Fostering social values in architecture:

We believe architecture influences society, so we strive for projects that foster social bonds. We remember who we are building for.

■ Raising awareness about sustainable construction:

By sharing our knowledge, we hope that sustainable housing design will attract sustainable residents.

Together, we build better!

**Are you interested in
collaboration?**

We warmly invite you to visit
our social media profiles,
where you will find more
information about sustainable
construction and collaboration
opportunities.

Office in Delft:

UC Architects B.V.
Haagweg 129
2612 CR Delft
085-2735411
info@ucarchitects.com
www.ucarchitects.com

Office in Groningen:

UCAG B.V.
Poelestraat 44
9712 KC Groningen
085-2735411
info@ucarchitects.com
www.ucarchitects.com



**URBAN
CLIMATE
ARCHITECTS**

