

SOCKET OPTIONS



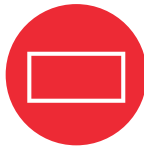
24 International
outlets available

CONFIGURATION OPTIONS



Customisable
configurations

FLUSH MOUNTING



Sits flush with
the work surface

PREMIUM CONSTRUCT



Slick one-piece
robust design

OPENING MECHANISM



Spring-assisted opening
and closing mechanism

FEATURES

The Arc is a state-of-the-art power outlet with a contemporary design that makes it the perfect addition for boardrooms and meeting areas. The Arc can be used in the closed position to minimise cable clutter, free up workspace and create a cleaner working environment. The soft open/closing system prevents the unit from slamming.

GENERAL FEATURES

- Slick one-piece robust design
- Premium all aluminium finish
- Customisable configurations
- Available in three sizes
- Spring-assisted opening and closing mechanism
- Incl. a Cable Support Hanger
- Front mountable data interfaces allows easy installation of data/comms

SAFETY FEATURES

- Shuttered power outlets
- Protect against power overloads with optional thermal reset switch

APPLICATIONS

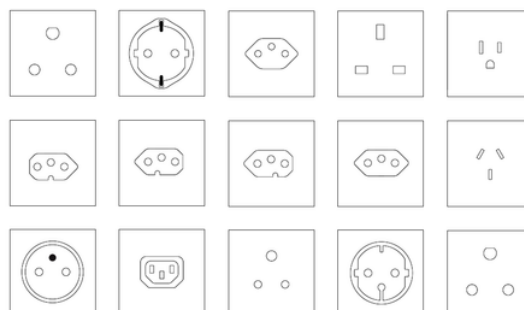
- Meeting areas
- Shared Workstations
- Workshops
- Boardrooms

TECHNICAL

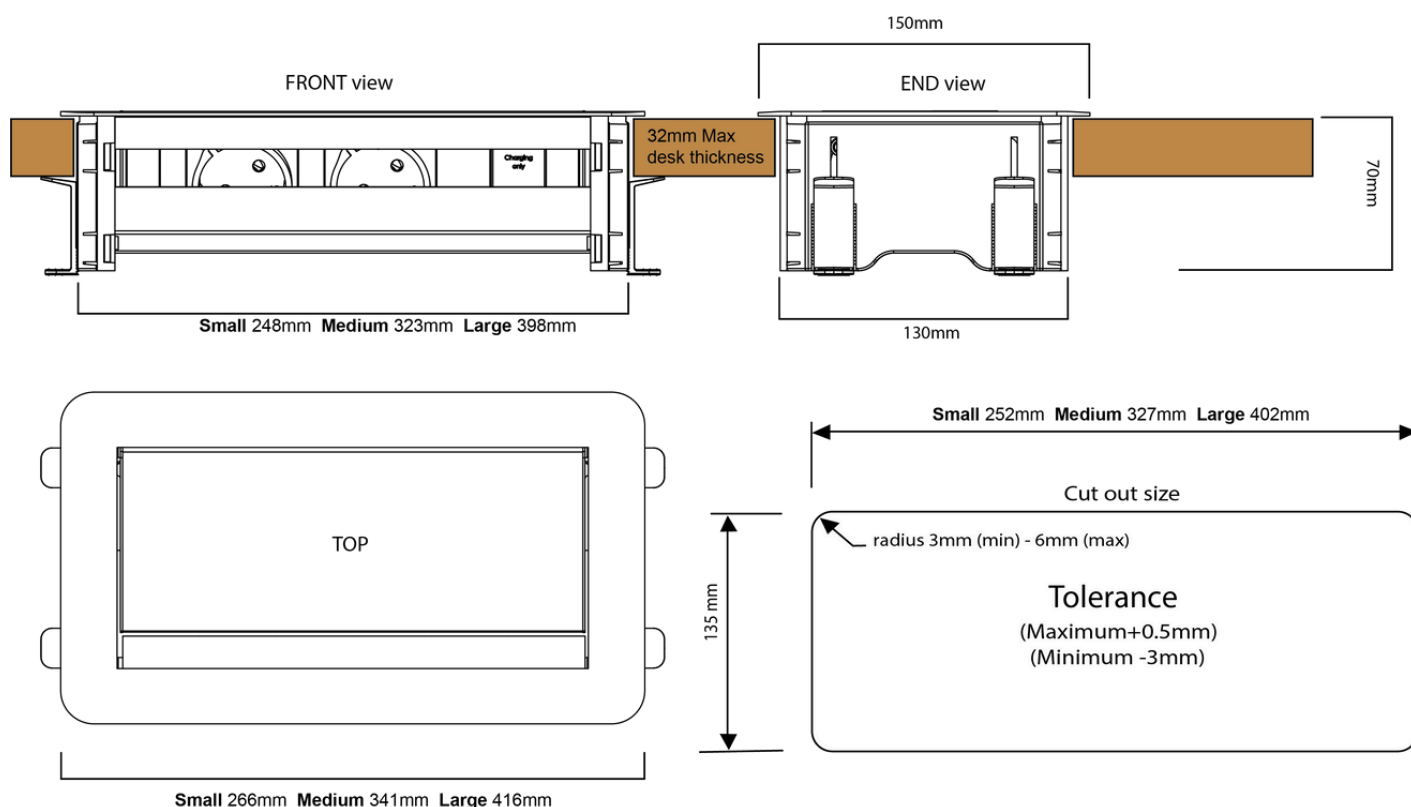
- **Voltage:** 110-250 V AC 50-60Hz
- **Current:** 15A (20A with upgraded wiring)
- **Power:** 1800W @ 110V - 125V AC
3000W @ 220V - 250V AC

POWER OUTLETS

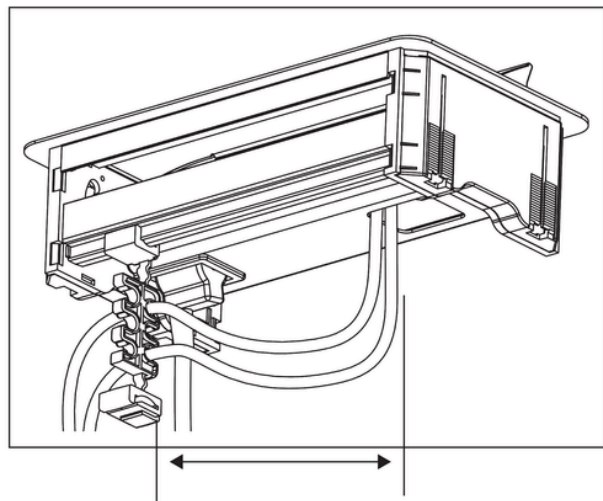
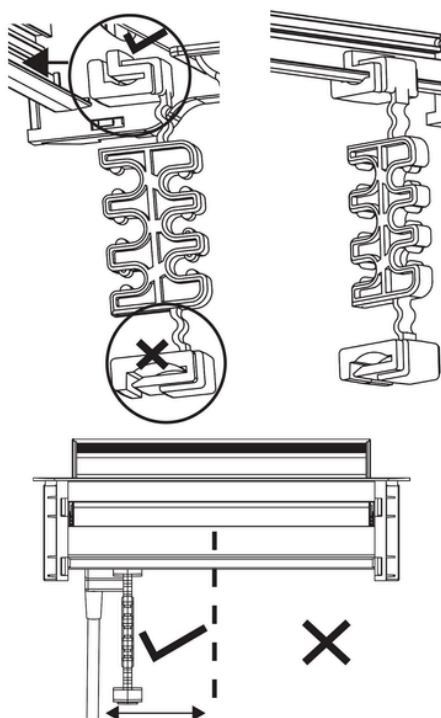
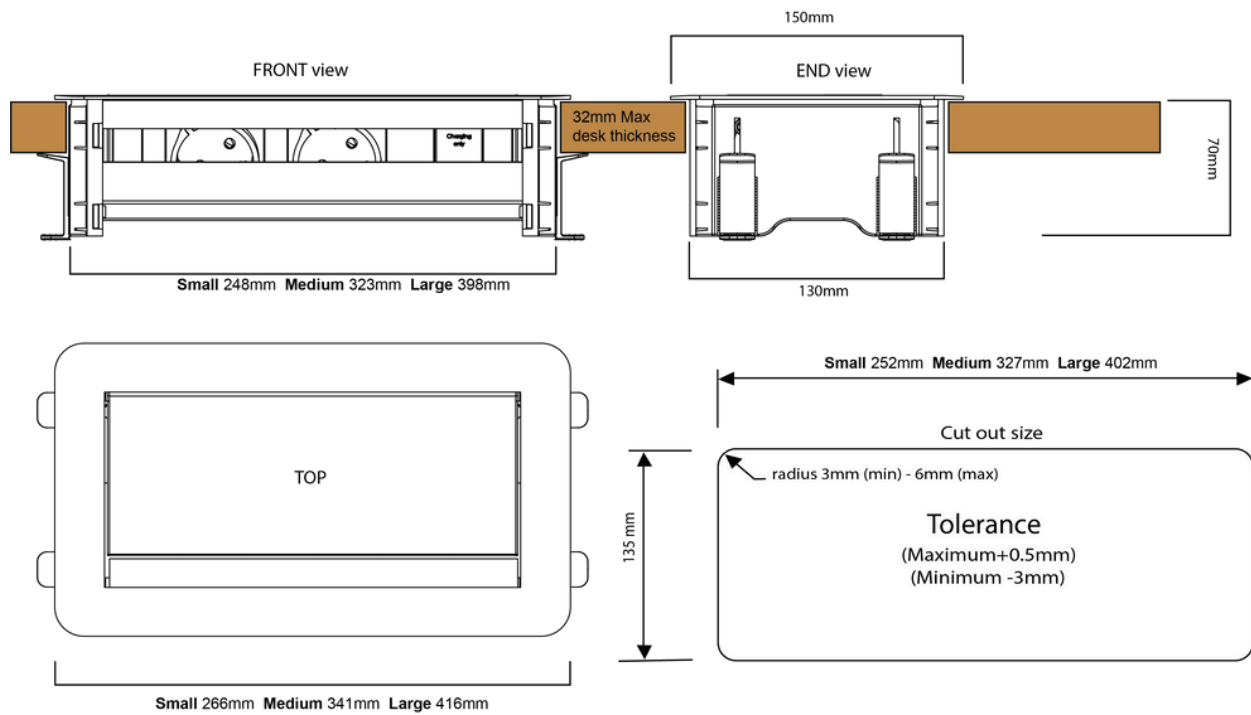
24 International outlets available.



ARC POWERDOCK

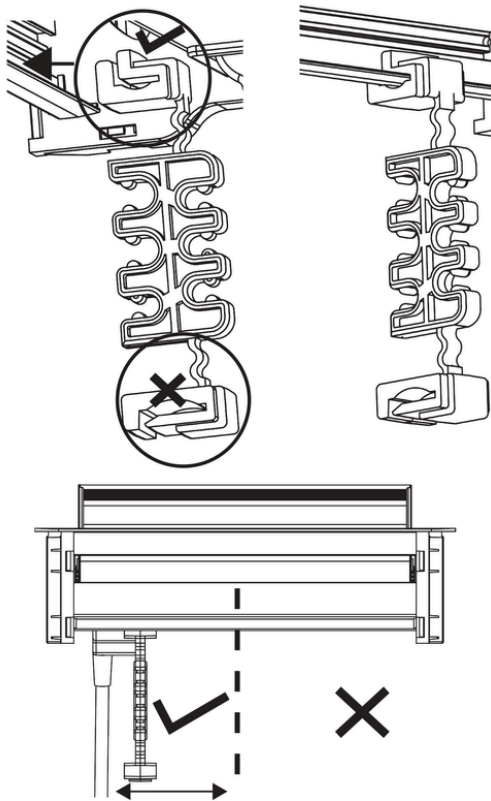


The manufacturer warrants this product to be free from defects in workmanship and materials, under normal residential use and conditions, for a period of one (1) year from the original invoice date. Shipping and handling fees are to be paid for by the customer.

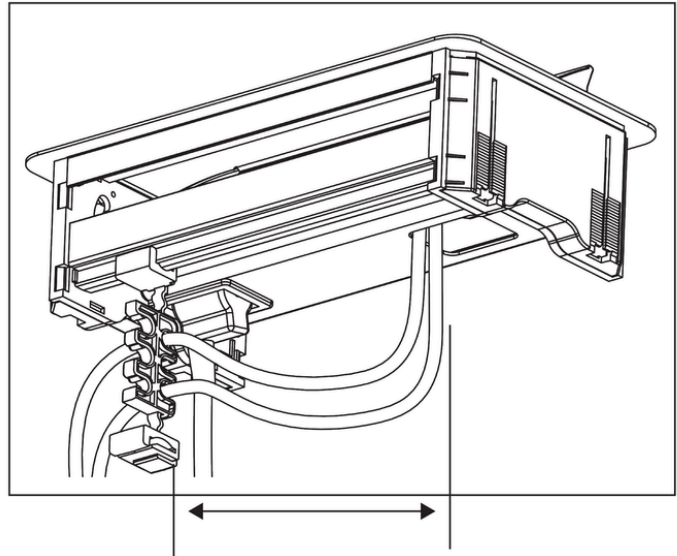


CABLE SUPPORT HANGER

The Arc includes a Cable Support Hanger, which has been designed for efficiency, convenience and neat arrangement of cables.



**RECOMMENDED SPACE FOR CABLE
SUPPORT HANGER**



ALLOW SUFFICIENT CABLE SLACK



The manufacturer warrants this product to be free from defects in workmanship and materials, under normal use and conditions, for a period of one (1) year from the original invoice date. Shipping and handling fees are to be paid for by the customer.