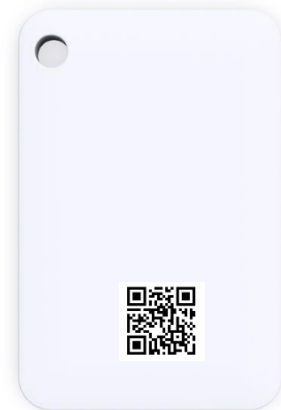


SMARTsens BeaconCARD

Asset tracking beacon wireless solution for ID measurements

The Beacon is a low cost keychain beacon solution with ultralow power chipset and BLE 5.0 technology. The beacon supports up to +4dBm transmission power level and broadcasts at 2.4GHz radio signals at regular and adjustable intervals. Beside the Cloud connection the Beacon is compatible w/ iOS, Android and publishes acceleration data and the ID printed on the QR Code. Together with the cloud system and a data collector it is the ideal solution to track presence of Assets in a radius up to 100m.

It can be easily mounted on any assets with double-sided 3M tape. It is designed for asset tracking and indoor location-based service.



Key Features

- Up to 18 month battery life
- Battery is replaceable
- Sensor-ID- printed on the QR Code
- Mini size, low weight



SPECIFICATION



Sensor	Acceleration sensor	
Chipset	nRF52 series	
BLE5.0	BLE5.0, supportable (high throughput, advertising Ext, improved coexistence)	
Radio	2.4GHz	
Transmit Range	BLE4.0/5.0 *100 meters in the open space.	
Factory Default	iBeacon	UUID: 0x7777772E-6B6B-6D63-6E2E-636F6D000001
		MajorID: major and minor combination is unique
		MinorID: major and minor combination is unique
	Tx Power	0dBm
	Broadcast interval	1000ms
	Broadcast content	Device name, MAC, iBeacon (incl UUID, Major, Minor)
General	Working temperature	-40°C~+70°C
	Storage temperature	10°C~+25°C, ≤65%RH
	Color	white
	Size	37.6mm*24mm*5.3mm
	Weight	7g
	Battery	CR2032 (replaceable)
	Battery life	18 Months (based on a broadcast interval of 1s and TX power of 0dBm)
	Conformance	FCC and CE
	Warranty	2 Years

IDENTIFICATION



Identificationcode	The QR code is on top of the device and consists of:	
	MAC address of the beacon	
	Serial No.	
	Example: MAC:BC5729032ABD, SERIAL:379702;	



The information and instructions contained in this datasheet have been compiled with the greatest possible care. However, we accept no liability for any errors, inaccuracies, or omissions in this datasheet. The use of the datasheet is at your own risk.