

Discover HyperWall™

A Cleverly Simple Building Skin System That Accelerates Installation, Lowers Overall Costs, and Reduces Risks

HyperWall is a complete exterior building skin system that combines structural composite panels, pre-installed glazing and fast installation. It's designed to enable you to close buildings as much as 50% faster with less risk while lowering overall project costs.

Close Buildings up to 50% Faster

HyperWall panels use bolted connections instead of welding. Installation is faster because the lightweight nature of the system allows lower-capacity connections to be used. Moisture, thermal and vapor barriers are built in, reducing the number of on-site trades, total costs and scheduling hassles.

HyperWall Panels Pass the Tests

The HyperWall system complies with all major building code requirements. Successful testing to date has included:

- NFPA 285 Vertical Burn Testing
- NFPA 268 Ignitability Testing
- ASTM E84 Horizontal Surface Burn Testing
- Extensive structural testing
- Coupon-level testing (tensile, compression, shear, etc.)
- Full-scale connection and wind load testing
- ASTM C1363 Thermal Transmittance Testing
- ASTM E90 Sound Transmittance Testing
- ASTM E283 Air Infiltration Testing
- ASTM E331 Water Penetration Testing
- ASTM C794 Caulking Adhesion Testing

Design Flexibility

Structural composites offer a level of creative freedom that simply isn't possible with other materials, including more structural versatility, a wider range of standard and mica-filled colors, the ability to attach secondary architectural elements, and other customization options.

HyperWall panels are designed to hang off the exterior of a building. Their high R-value allows for thin infill walls on the interior, which can increase your rentable square footage.

More Efficient Site Logistics

Lighter-weight panels give you more options when it comes to moving and handling them on a job site. Contractors can use less-expensive and lighter-weight cranes, or construction forklifts at ground levels. On most jobs, the tower crane that's already in place can be utilized for placement. HyperWall panels with pre-installed, large-format glazing can even be moved with a vacuum lifter, enabling faster and more precise installation.



Fewer Safety and Warranty Risks

Compared to precast concrete, three times as many HyperWall panels can be transported per truck, reducing the total number of vehicles on the jobsite.

Structural composites are water-inert and incredibly resistant to corrosion. The panel itself is intrinsically waterproof, substantially reducing the likelihood of water-related warranty claims. They also protect against a wide range of other environmental factors, including UV radiation and high temperatures.

More Sustainable Projects

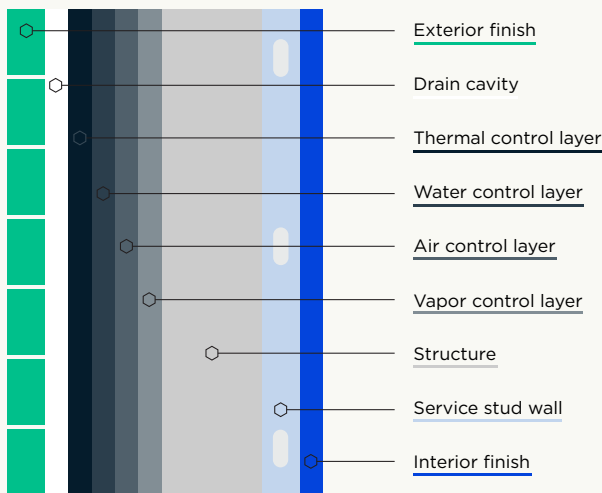
HyperWall panels use less material and have significantly less embodied carbon than precast concrete and steel alternatives. Lighter load weights and fewer total trucks for transport reduce fuel consumption, costs, truck idling and emissions. All these advantages lower embodied carbon for the job and help support LEED objectives.

About Building Composites LLC

Building Composites LLC was founded to champion the full potential of structural composites as a stronger, lighter and more sustainable alternative to traditional building formats. Headquartered in Dayton, Ohio, the company is dedicated to changing the norms for the building industry, not only with superior combinations of materials and more sustainable manufacturing methods, but with capabilities that streamline the building process to make it more efficient and profitable.

To learn more about Building Composites, visit www.building-composites.com.

A "PERFECT" EXTERIOR WALL



EXTERIOR WALL MADE WITH A HYPERWALL™ PANEL

