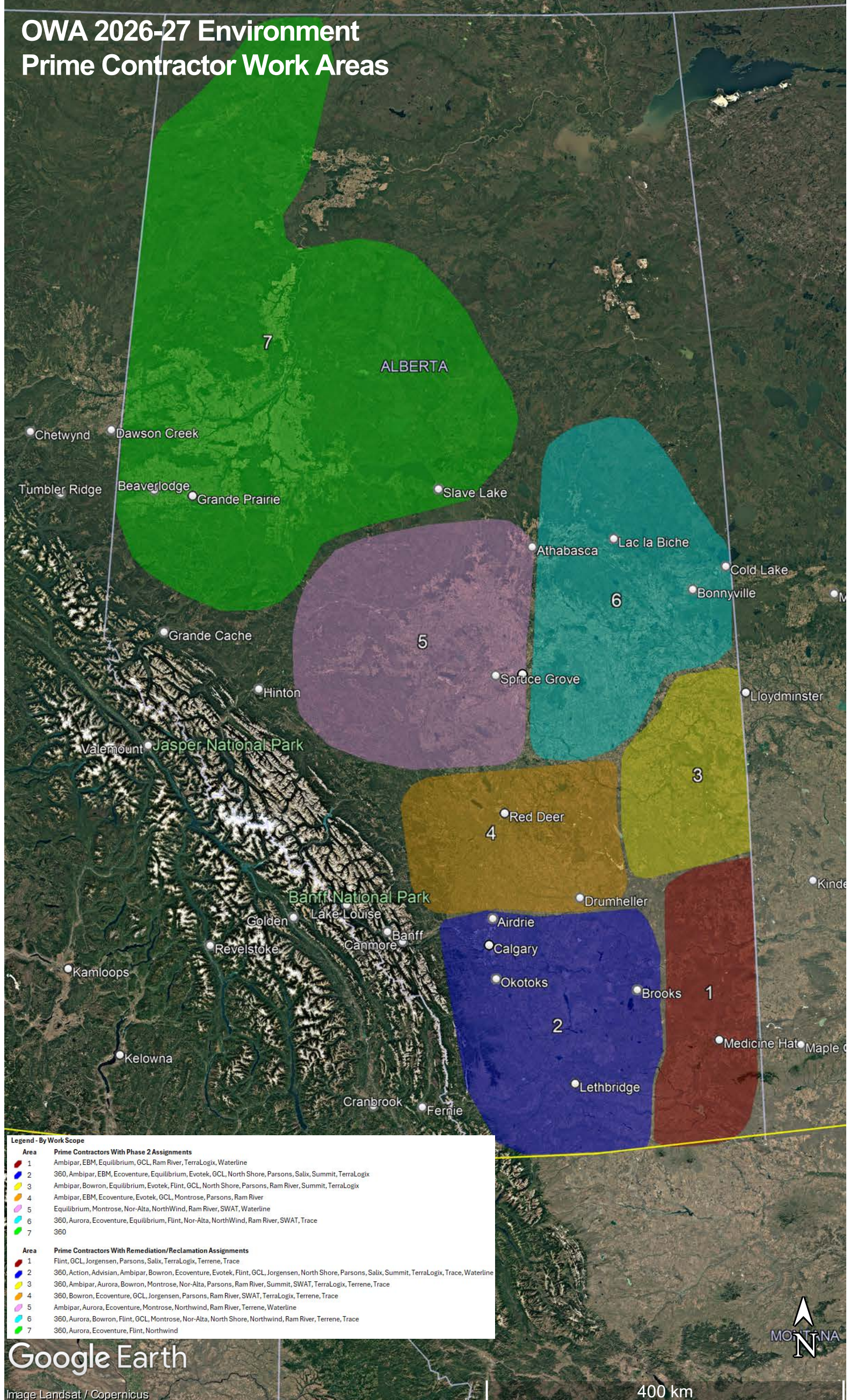


# OWA 2026-27 Environment Prime Contractor Work Areas



**Legend - By Work Scope**

Area	Prime Contractors With Phase 2 Assignments
1	Ambipar, EBM, Equilibrium, GCL, Ram River, TerraLogix, Waterline
2	360, Ambipar, EBM, Ecoventure, Equilibrium, Evotek, GCL, North Shore, Parsons, Salix, Summit, TerraLogix
3	Ambipar, Bowron, Equilibrium, Evotek, Flint, GCL, North Shore, Parsons, Ram River, Summit, TerraLogix
4	Ambipar, EBM, Ecoventure, Evotek, GCL, Montrose, Parsons, Ram River
5	Equilibrium, Montrose, Nor-Alta, NorthWind, Ram River, SWAT, Waterline
6	360, Aurora, Ecoventure, Equilibrium, Flint, Nor-Alta, NorthWind, Ram River, SWAT, Trace
7	360

Area	Prime Contractors With Remediation/Reclamation Assignments
1	Flint, GCL, Jorgensen, Parsons, Salix, TerraLogix, Terrene, Trace
2	360, Action, Advisian, Ambipar, Bowron, Ecoventure, Evotek, Flint, GCL, Jorgensen, North Shore, Parsons, Salix, Summit, TerraLogix, Trace, Waterline
3	360, Ambipar, Aurora, Bowron, Montrose, Nor-Alta, Parsons, Ram River, Summit, TerraLogix, Terrene, Trace
4	360, Bowron, Ecoventure, GCL, Jorgensen, Parsons, Ram River, SWAT, TerraLogix, Terrene, Trace
5	Ambipar, Aurora, Ecoventure, Montrose, Northwind, Ram River, Terrene, Waterline
6	360, Aurora, Bowron, Flint, GCL, Montrose, Nor-Alta, North Shore, Northwind, Ram River, Terrene, Trace
7	360, Aurora, Ecoventure, Flint, Northwind

