



YRP10 Specifications Note : Specifications and appearance are subject to change without prior notice.

Model	YRP10
Applicable PCB	Single lane : L510 x W510mm to L50 x W50mm Dual lane : L420 x W330mm to L50 x W50mm
Printing heads	3S head (3S : Swing Single Squeegee)
Printing accuracy	Positioning repeatability ($\pm 6\sigma$) : $\pm 8 \mu\text{m}$ $Cp \geq 2.0$ Printing accuracy ($\mu \pm 6\sigma$) : $\pm 16 \mu\text{m}$ $Cpk \geq 2.0$ ^{Note}
Core cycle time (Not include printing)	6sec
Applicable stencil size	L750 x W750mm, L736 x W736mm (29"), L750 x W650mm, L650 x W550mm L600 x W550mm, L550 x W650mm, L584 x W584mm (23")
Power supply	Single-phase AC 200 to 230V +/-20V
Air supply source	0.4MPa or more
External dimension (excluding projections)	L1,640 x W1,840 x H1,525mm (Single-lane standard specification) L3,560 x W2,300 x H1,525mm (Dual-lane specification)
Weight	Printer : Approx. 1,710kg Traverse conveyor : Approx. 450kg

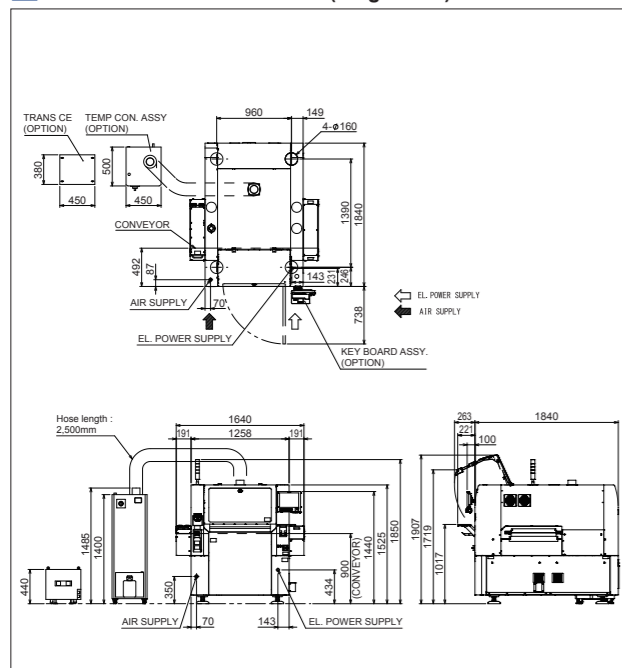
Note : Measured using CeTaQ under optimum conditions of YAMAHA

1 STOP SMART SOLUTION

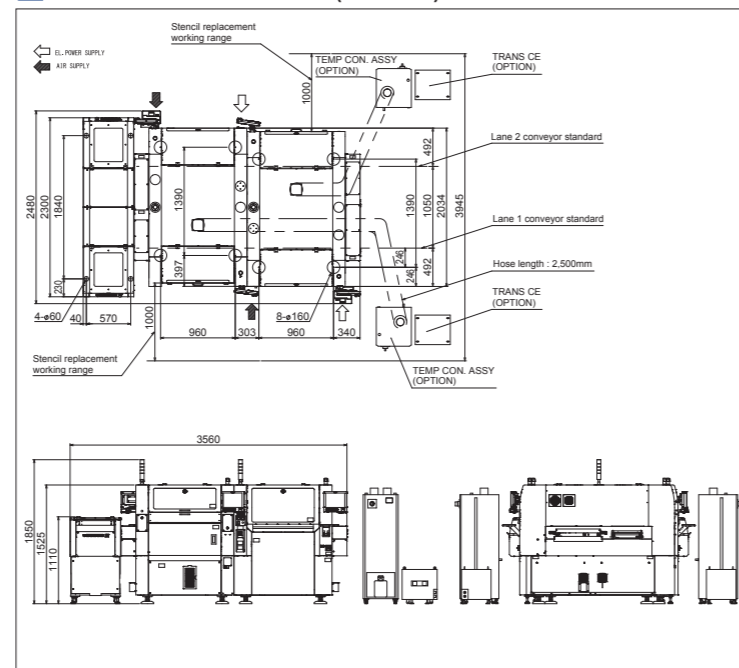
Premium Printer

YRP10

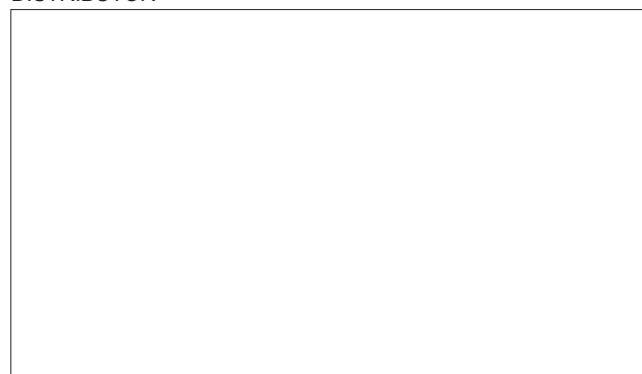
External dimension (Single lane)



External dimension (Dual lane)



DISTRIBUTOR



YAMAHA MOTOR CO., LTD.

URL <https://global.yamaha-motor.com/business/smt/>

Robotics Operations

127 Toyooka, Kita-ku, Hamamatsu, Shizuoka 433-8103, Japan
Telephone 81-53-525-7061
Facsimile 81-53-525-8351

- Tohoku Sales Office
- East Japan Sales Office
- West Japan Sales Office
- Kyushu Sales Office

YAMAHA MOTOR IM (SUZHOU) CO., LTD.

#8 Building No.17 East Suhong Road,
Suzhou Industrial Park, China 215026
Telephone 86-512-6831-7091 Facsimile 86-512-6831-7093

YAMAHA MOTOR EUROPE N.V.

German Branch Office, Robotics Business (Germany office)
Hansemannstrasse 12, 41468 Neuss, Germany
Telephone 49-(0)2131-2013 (Ext 520) Facsimile 49-(0)2131-2013 (Ext 529)

YAMAHA MOTOR IM (SUZHOU) CO., LTD. Shenzhen Branch

1/F, Bd. 1, Yesun Intelligent Community I,
Guangang Rd. 1301-70, Guanlan St,
Longhua District Shenzhen, Guangdong, P.R.C. China
Telephone 86-755-2393-9910 Facsimile 86-755-2393-9974

YAMAHA MOTOR Corporation, U.S.A. Robotics Division (USA office)

3065 Chastain Meadows Parkway, Building 100,
Marietta, Georgia 30066 U.S.A.
Telephone 1-770-420-5825 Facsimile 1-770-420-6043

THAI YAMAHA MOTOR CO., LTD. (Thailand Office)

64 Moo1, Debaratana Rd., Km.21, Tambol Srisa Jorake Yai,
Amphur Bangsaotthong, Samutprakarn 10570, Thailand
Telephone 66-96-779-7680

YAMAHA MOTOR PARTS MANUFACTURING VIETNAM CO., LTD. (Vietnam Office)

Lot G1-G2, Thang Long Industrial Park,
Vong La Com, Dong Anh Dist, Hanoi, Vietnam
Telephone 84-24-3951-6456 Facsimile 84-24-3951-6458

YAMAHA MOTOR SOLUTIONS INDIA Pvt. Ltd.

A-3, Industrial Area, Noida-Dadri Road, Surajpur Distt. Gautam Budh Nagar (U.P.) India-201306
Telephone 91-120-6459000

● The models shown in the photographs in this catalog may differ slightly from the standard specifications.
● Specifications and appearance are subject to change without prior notice.

1 STOP SMART SOLUTION

Premium Printer

YRP10

High-speed, high-quality printer that achieves complete automatic setups and changeovers.
It also supports both single lane and dual lane production.

High-speed printing performance

Core cycle time : 6 seconds

Note : Print time excluded

Printing accuracy

$\mu\pm 6\sigma : \pm 16\mu\text{m}$ Cpk ≥ 2.0

Note : Measured using CeTaQ under optimum conditions of YAMAHA

Completely automatic setups and changeovers

Dual lane fully independent production



Feature 1 Delivers both high quality & super-accurate printing!

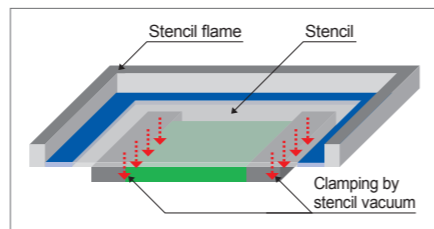
YAMAHA's original 3S head [3S : Swing Single Squeegee]

Program change squeegee attack angle and speed to an ideal setting to provide optimal printing conditions that match the solder being used.



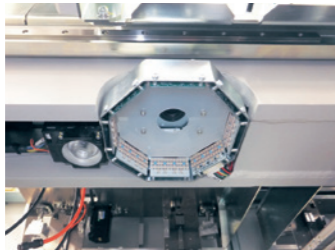
Stencil vacuum

A stencil vacuum mechanism delivers consistent high accuracy printing with no effects from stencil droop. Also drastically cuts the setup time since no offset entry is needed during back and forth printing movement.



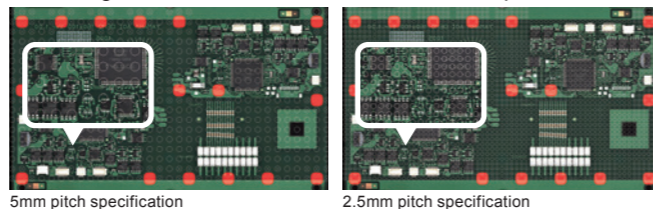
Printer's built-in inspection camera (Option)

Supports full-on pro-level inspections with a dedicated camera. Feedback from inspection results allow over-printing and stencil cleaning.



Push-up pins for high-density PCBs (Option)

Possible to arrange up to 200 pins. In addition to a 5 mm-pitched matrix plate, a 2.5 mm-pitched matrix plate with a higher degree of arrangement freedom is also available as an option.



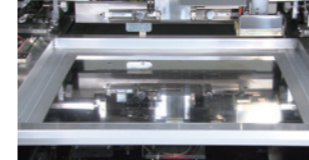
Feature 2 Completely automatic setups and changeovers & prolonged nonstop operation

Ultra-high-efficiency support of a variety of production models

Automatic replacement of the stencil and push-up pins. Through a combination with automatic changeovers in the entire line, man-hours and the number of human errors in model changeover have been drastically reduced. Nonstop solder supply with a 12 oz. syringe achieves prolonged, unmanned, nonstop solder printing.



Stencil replacement



- Supports multiple stencil sizes
- To be performed in parallel with push-up pin replacement

Solder transfer



- Solder rolling state is maintained
- Prevention of solder dripping from squeegee

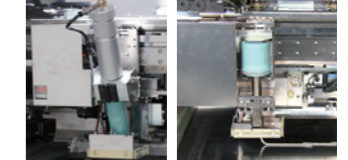
Push-up pin exchange



- Capable of handling a large PCB (L420 x W420 mm)^{Note}
- Two-head simultaneous pickup high-speed pin replacement

Note : The 2.5mm pitch spec handles Max. L420 x W250mm PCBs. L420 x W420mm size is also available as an option.

Solder supply

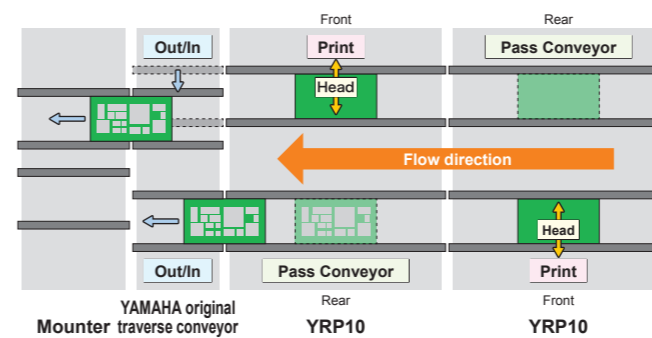


- Possible to use a 6 oz. syringe and 12 oz. syringe together
- Stabilized solder rolling radius

Feature 3 Dual lane fully independent production

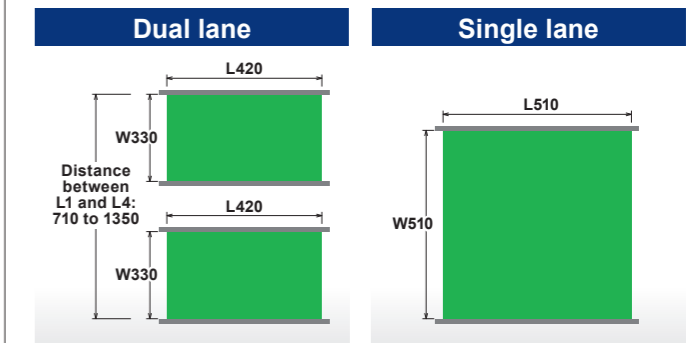
Flexible dual lane

Connecting two YRP10s in series enables a fully independent dual-lane operation. A dual-lane operation and an automatic changeover feature are supported at the same time. Addition of a traverse conveyor flexibly connects the YRP10s to the downstream equipment.



W330 dual lane

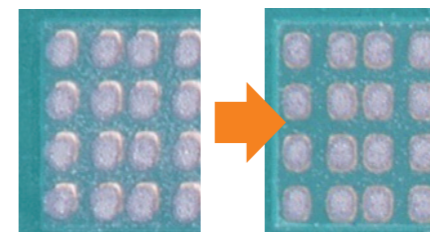
Large PCBs the size of up to L420 x W330 mm can be produced in a dual lane. You can increase the number of PCBs to take and the number of PCBs to be conveyed by the carrier, boosting production efficiency.



Feature 4 M2M link solution

Inspection result feedback

Possible to clean the stencil and correct its position using inspection result feedback via the link with the SPI.



Solder paste printing analysis

Displays link between fluctuations in solder size and solder paste printing status and allows checking the solder paste printer status when defects or problems occur. Streamline quality improvements and line operating rate.

