

6918 MELROSE AVENUE

FOR LEASE / HIGH-END RETAIL SPACE IN THE MELROSE/SYCAMORE DISTRICT



JARED SWEDELSON

Vice President

d: 818-742-1632

m: 818-644-7597

jswedelson@naicapital.com

Cal DRE Lic #02105146

NAI CAPITAL - WEST LOS ANGELES

11835 W. Olympic Blvd., Suite 700E

Los Angeles, CA 90064

d: 310-806-6100

f: 310-806-6101

www.naicapital.com

NAI Capital
COMMERCIAL REAL ESTATE SERVICES, WORLDWIDE

Building Details



Lease Rate:

\$4.50/SF

Available SF:

±3,000 SF

Parking:

4 spaces

Space Features:

- Large window displays and skylights
- Checkout counter
- Backdoor double entry with electrical roll down gate
- 11ft high ceilings
- Studio & back of house storage
- 2 kitchenettes
- 3 restrooms

Property Description:

Surrounded by top-tier design showrooms, architecture firms, and art galleries, this standout retail space offers a rare opportunity to anchor your brand on Melrose Avenue. The building's mid-century modern character is complemented by tall ceilings, skylights, and expansive window frontage for maximum visibility. Meticulously curated by the architect-owner and designed by IDGroup, the space features premium materials, finishes, and fixtures throughout. Ideal for retail, showroom, gallery, or creative use, it offers a polished, versatile environment in one of LA's most vibrant design destinations.

Property Photos

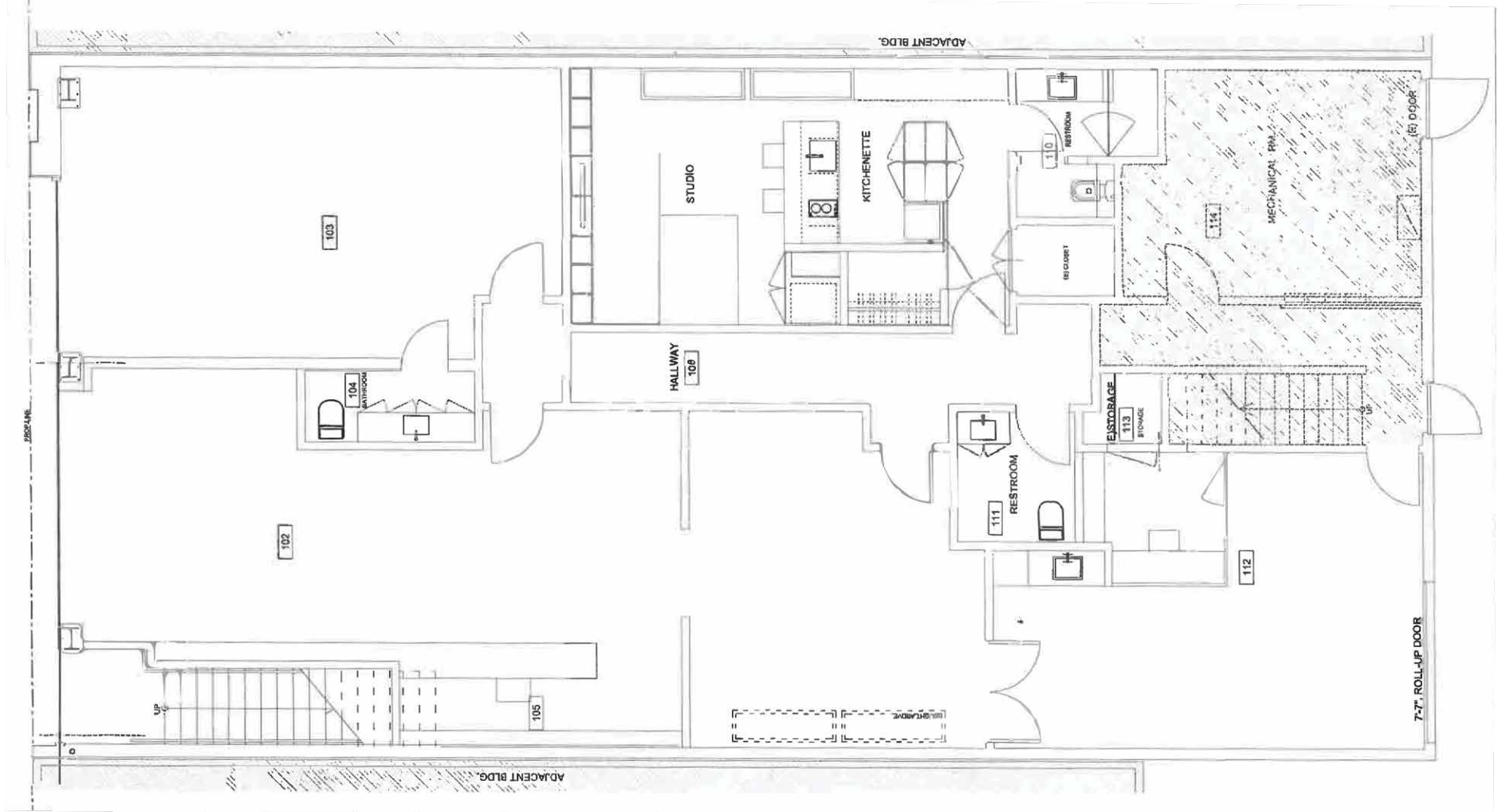


Property Photos





Floor Plan



Retail Map



Contact Info

JARED SWEDELSON

Vice President

d: 818-742-1632

m: 818-644-7597

jswedelson@naicapital.com

Cal DRE Lic #02105146

NAI CAPITAL - WEST LOS ANGELES

11835 W. Olympic Blvd., Suite 700E

Los Angeles, CA 90064

d: 310-806-6100

f: 310-806-6101

www.naicapital.com

No warranty, express or implied, is made as to the accuracy of the information contained herein. This information is submitted subject to errors, omissions, change of price, rental or other conditions, withdrawal without notice, and is subject to any special listing conditions imposed by our principals. Cooperating brokers, buyers, tenants and other parties who receive this document should not rely on it, but should use it as a starting point of analysis, and should independently confirm the accuracy of the information contained herein through a due diligence review of the books, records, files and documents that constitute reliable sources of the information described herein. NAI Capital Cal DRE #02130474