

# 2<sup>ND</sup> FLOOR CREATIVE OFFICE SPACE

## 7561 SUNSET BLVD



### JARED SWEDELSON

Vice President

d: 818-742-1632

m: 818-644-7597

jswedelson@naicapital.com

Cal DRE Lic #02105146

### NAI CAPITAL - WEST LOS ANGELES

11550 Santa Monica Blvd., Suite 1550

Los Angeles, CA 90025

d: 310-806-6100

f: 310-806-6101

www.naicapital.com

**NAI Capital**

COMMERCIAL REAL ESTATE SERVICES, WORLDWIDE

# Property Details



## Price:

\$2.95/SF NNN (\$.72/SF)

## Building Square Feet:

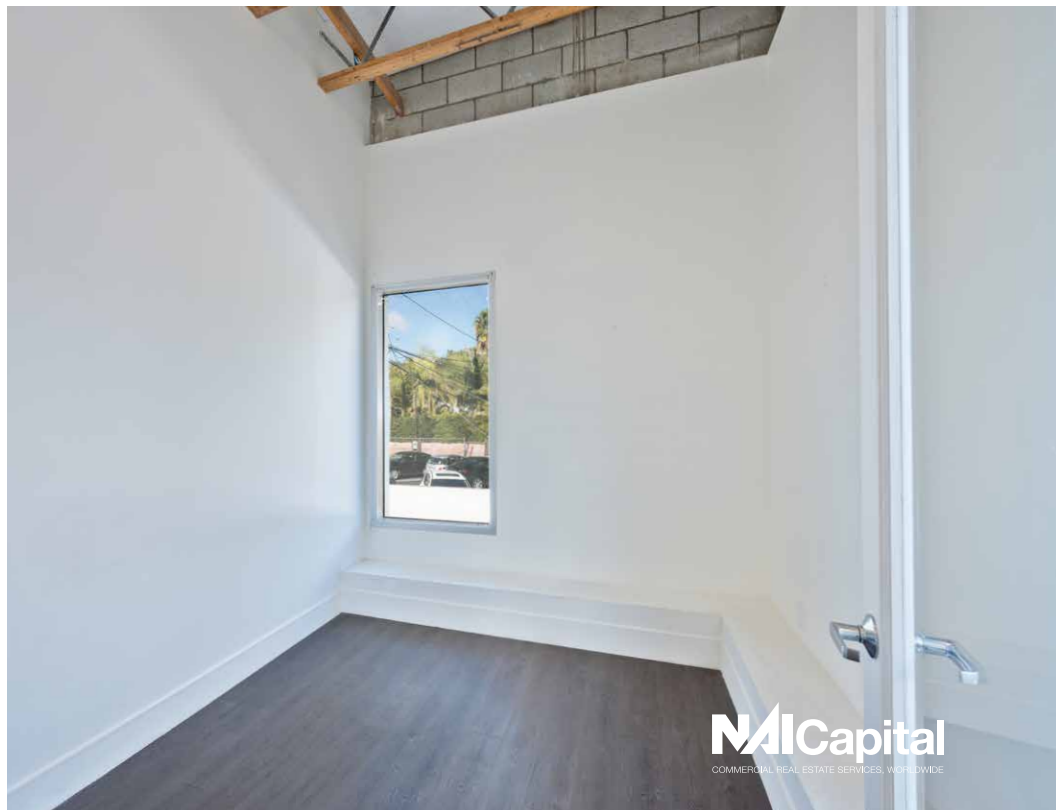
Suite 203:	790 SF
------------	--------

## Building Specs:

- Wide open floor plan
- 2 private offices
- Kitchenette

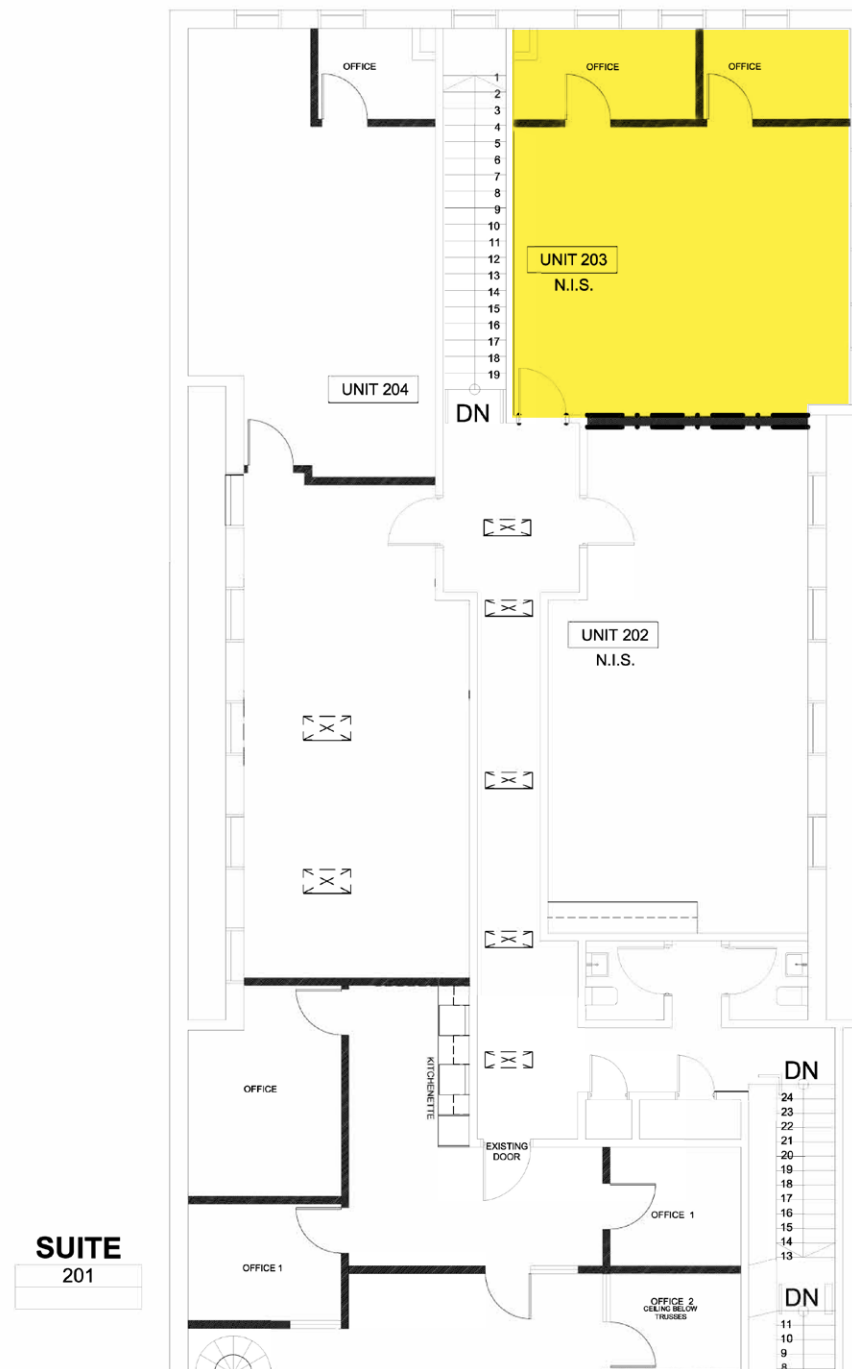


# Unit 203



# Site Plan

## 7561 SUNSET BOULEVARD





# Aerial View

HOLLYWOOD

SITE

W SUNSET BLVD

N CURSON AVE

N SIERRA BONITA AVE



# Contact Info

## JARED SWEDELSON

Vice President  
d: 818-742-1632  
m: 818-644-7597  
jswedelson@naicapital.com  
Cal DRE Lic #02105146

## NAI CAPITAL - WEST LOS ANGELES

11550 Santa Monica Blvd., Suite 1550  
Los Angeles, CA 90025  
d: 310-806-6100  
f: 310-806-6101  
www.naicapital.com

No warranty, express or implied, is made as to the accuracy of the information contained herein. This information is submitted subject to errors, omissions, change of price, rental or other conditions, withdrawal without notice, and is subject to any special listing conditions imposed by our principals, cooperating brokers, buyers, tenants and other parties who receive this document should not rely on it, but should use it as a starting point of analysis, and should independently confirm the accuracy of the information contained herein through a due diligence review of the books, records, files and documents that constitute reliable sources of the information described herein. NAI Capital Cal DRE #02130474

**NAI Capital**  
COMMERCIAL REAL ESTATE SERVICES WORLDWIDE