

# 7250 MELROSE AVENUE LOS ANGELES, CA 90046

FOR LEASE – RENOVATED 2ND FLOOR OFFICE SPACE ON MELROSE AVENUE



## JARED SWEDELSON

Vice President  
d: 818-742-1632  
m: 818-644-7597  
jswedelson@naicapital.com  
Cal DRE Lic #02105146

## NAI CAPITAL - WEST LA

11550 Santa Monica Blvd., Suite 1550  
Los Angeles, CA 90025  
d: 310-806-6100  
f: 310-806-6101  
www.naicapital.com



# Property Details



## Lease Rate

\$3.50/SF MG

## Available

1,720 SF

## Parking

2 subterranean space

## Space Features

- Spacious creative open layout with one private office and full kitchen
- Recently remodeled space flooded with natural light
- Private subterranean parking
- Shared patio

# Property Photos



3 | 7250 MELROSE AVENUE



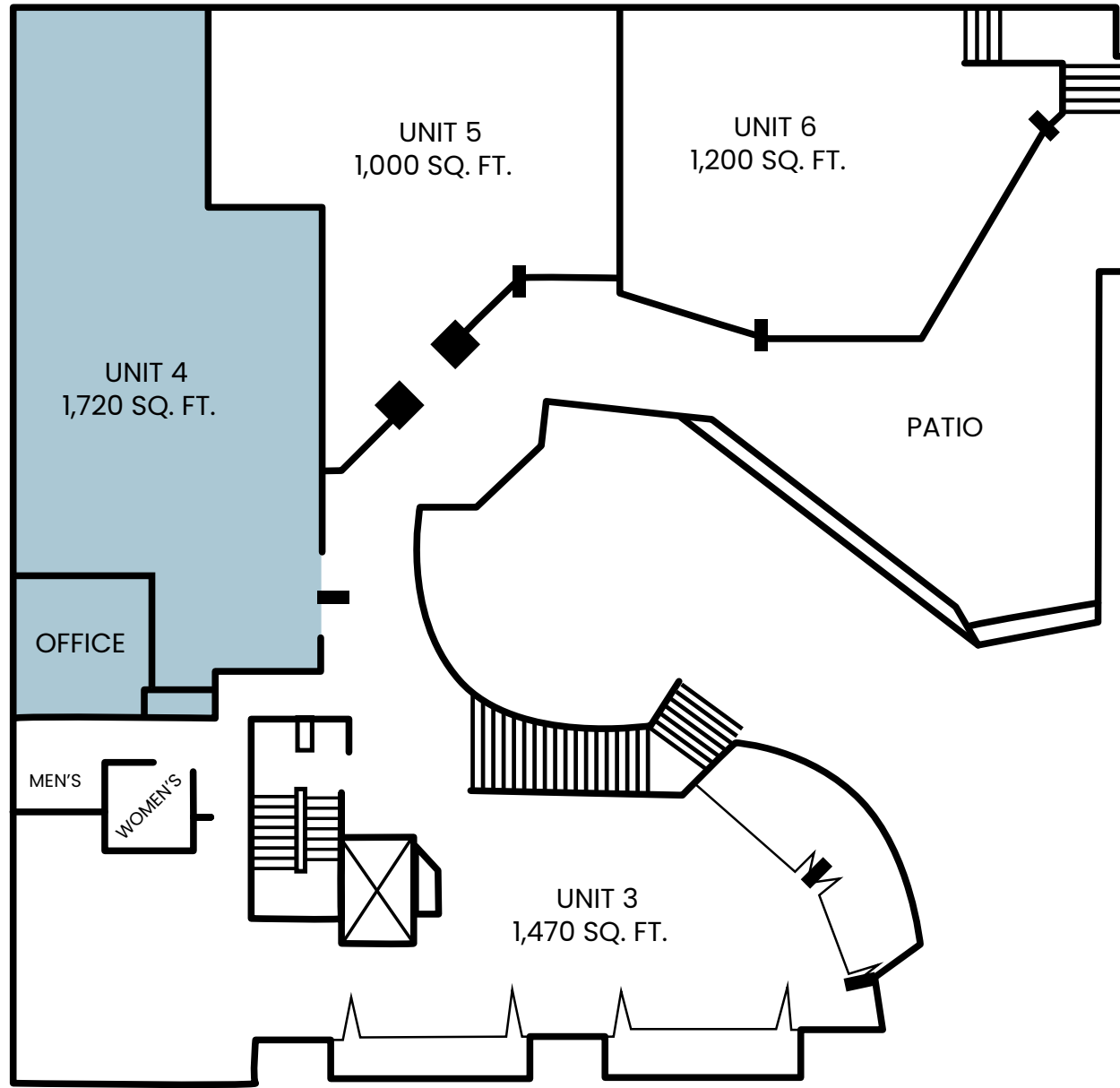
**NAI**Capital  
COMMERCIAL REAL ESTATE SERVICES WORLDWIDE



# Property Photos

Unit  
4

# Floor Plan





# Retail Map

  
WALK  
SCORE  
**92**

  
TRANSIT  
SCORE  
**54**

  
BIKE  
SCORE  
**67**



CENTURY CITY

FAIRFAX

SITE

  
Philly's Best  
CHEESESTEAKS

  
STATION 43  
BURGERS AND SANDWICHES

  
STARBUCKS  
URBAN  
OUTFITTERS

  
RONAN

  
FIKA COFFEE  
FIKA

  
MARATHON  
Burger  
COMMUNITY  
GOODS  
  
Dr. Martens  
  
CARMEL  
  
PLAYGROUND  
LA  
  
BLU JAM  
CAFE

  
35,341 ATC

  
LALA'S  
argentine grill

N ALTA VISTA BLVD





# Contact Info

## JARED SWEDELSON

Vice President

d: 818-742-1632

m: 818-644-7597

jswedelson@naicapital.com

Cal DRE Lic #02105146

## NAI CAPITAL - WEST LA

11550 Santa Monica Blvd., Suite 1550

Los Angeles, CA 90025

d: 310-806-6100

f: 310-806-6101

www.naicapital.com

No warranty, express or implied, is made as to the accuracy of the information contained herein. This information is submitted subject to errors, omissions, change of price, rental or other conditions, withdrawal without notice, and is subject to any special listing conditions imposed by our principals. Cooperating brokers, buyers, tenants and other parties who receive this document should not rely on it, but should use it as a starting point of analysis, and should independently confirm the accuracy of the information contained herein through a due diligence review of the books, records, files and documents that constitute reliable sources of the information described herein. NAI Capital Cal DRE #02130474