

# 6918 MELROSE AVENUE

FOR LEASE / HIGH-END RETAIL SPACE IN THE MELROSE/SYCAMORE DISTRICT



## JARED SWEDELSON

Vice President

d: 818-742-1632

m: 818-644-7597

[jswedelson@naicapital.com](mailto:jswedelson@naicapital.com)

Cal DRE Lic #02105146

## NAI CAPITAL - WEST LOS ANGELES

11835 W. Olympic Blvd., Suite 700E

Los Angeles, CA 90064

d: 310-806-6100

f: 310-806-6101

[www.naicapital.com](http://www.naicapital.com)

*AI-generated conceptual rendering for marketing purposes only*

**NAI Capital**  
COMMERCIAL REAL ESTATE SERVICES, WORLDWIDE

# Building Details



## Available SF:

Unit 101:	1,496 SF
Unit 102:	1,123 SF

## Lease Rate:

\$4.50/SF NNN
\$4.75/SF NNN

## Parking:

2 spaces
2 spaces

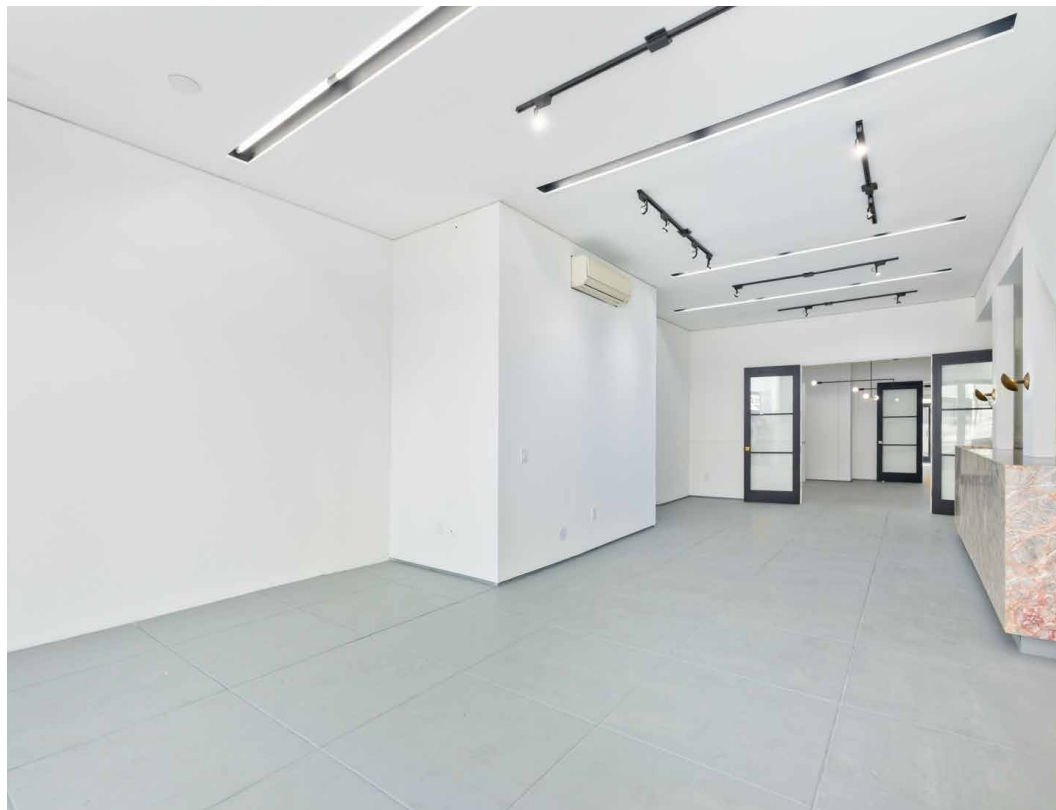
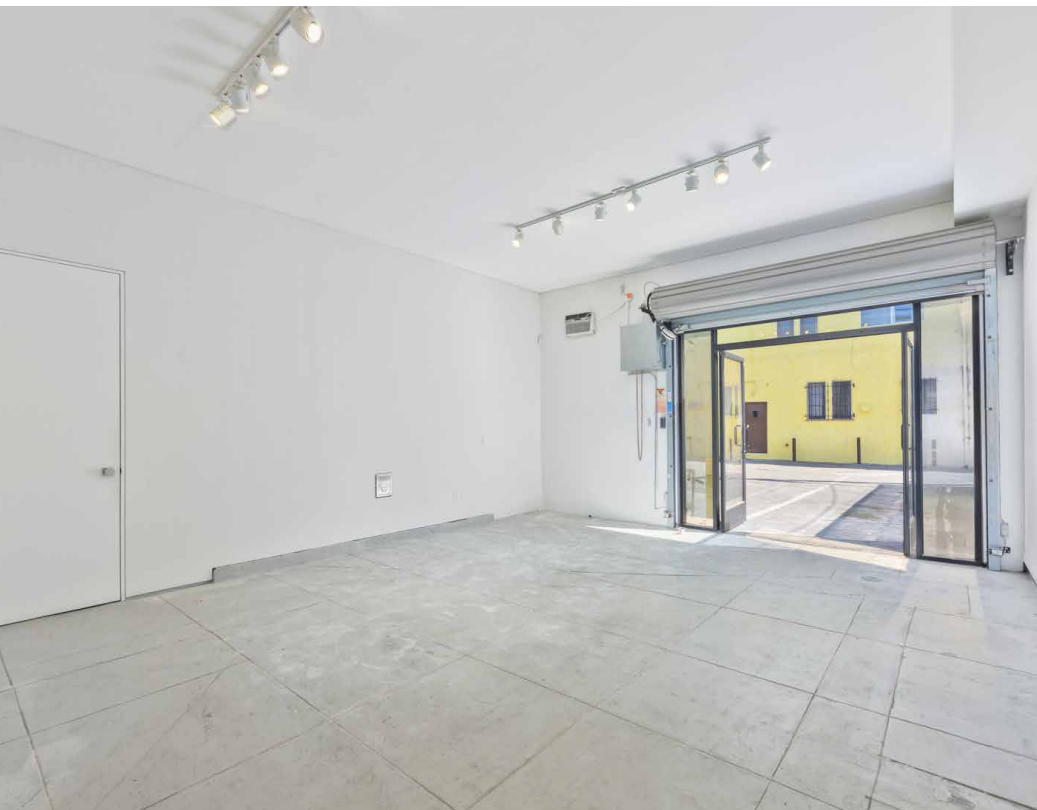
## Property Description:

Surrounded by top-tier design showrooms, architecture firms, and art galleries, this standout retail space offers a rare opportunity to anchor your brand on Melrose Avenue. The building's mid-century modern character is complemented by tall ceilings, skylights, and expansive window frontage for maximum visibility. Meticulously curated by the architect-owner and designed by IDGroup, the space features premium materials, finishes, and fixtures throughout. Ideal for retail, showroom, gallery, or creative use, it offers a polished, versatile environment in one of LA's most vibrant design destinations.

## Space Features:

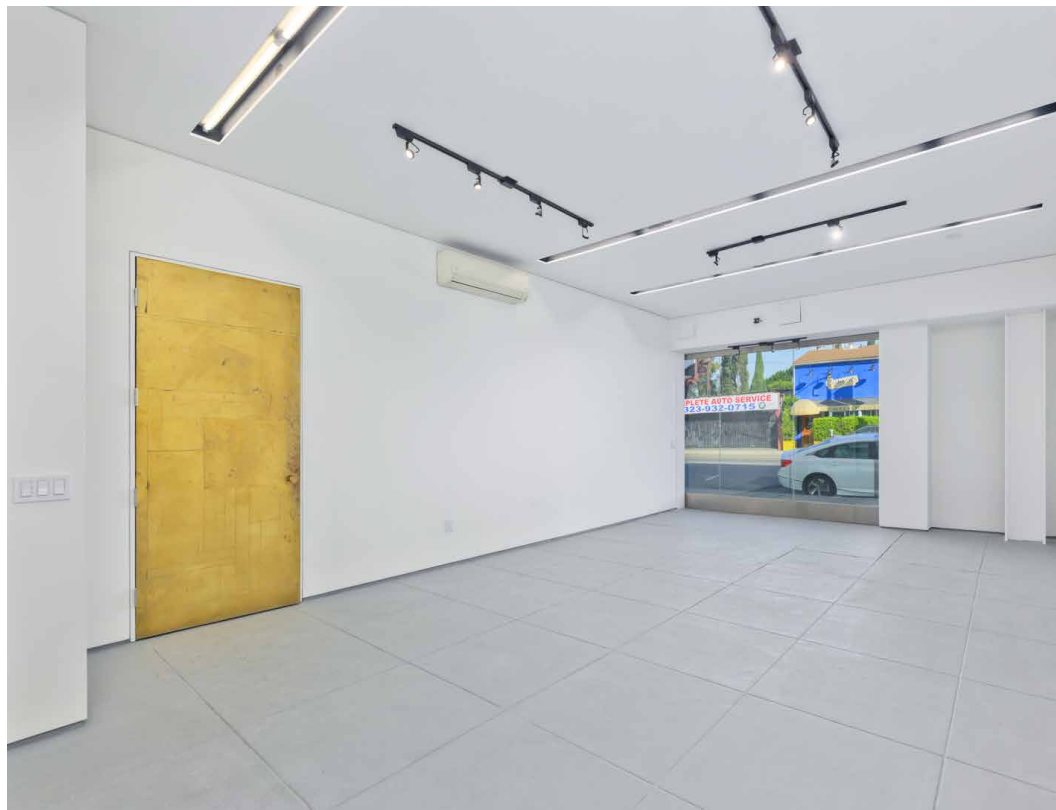
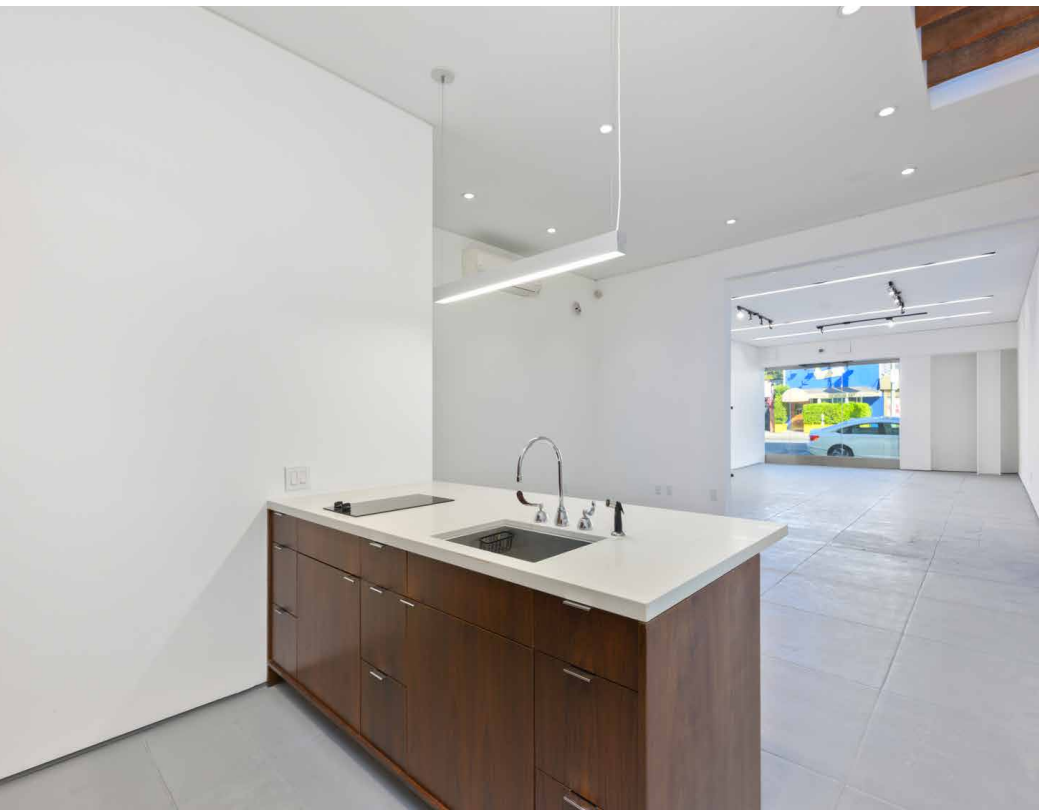
- Large window displays and skylights
- Backdoor double entry with electrical roll down gate
- Studio & back of house storage
- Checkout counter
- 11ft high ceilings
- Full kitchenette
- Private restrooms

# Unit 101

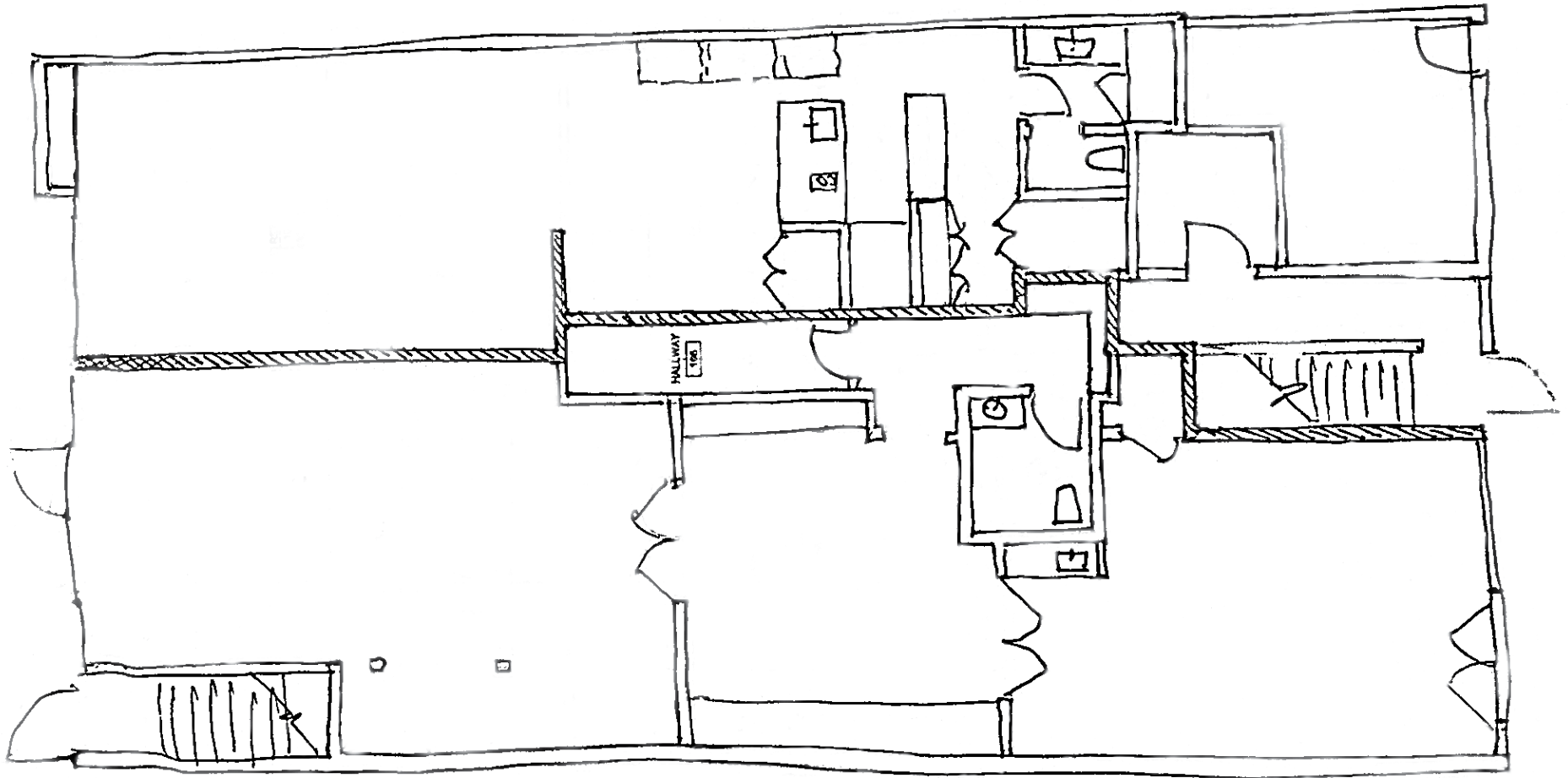




# Unit 102



# Floor Plan





# Retail Map





# Contact Info

## JARED SWEDELSON

Vice President  
d: 818-742-1632  
m: 818-644-7597  
jswedelson@naicapital.com  
Cal DRE Lic #02105146

## NAI CAPITAL - WEST LOS ANGELES

11835 W. Olympic Blvd., Suite 700E  
Los Angeles, CA 90064  
d: 310-806-6100  
f: 310-806-6101  
www.naicapital.com

No warranty, express or implied, is made as to the accuracy of the information contained herein. This information is submitted subject to errors, omissions, change of price, rental or other conditions, withdrawal without notice, and is subject to any special listing conditions imposed by our principals. Cooperating brokers, buyers, tenants and other parties who receive this document should not rely on it, but should use it as a starting point of analysis, and should independently confirm the accuracy of the information contained herein through a due diligence review of the books, records, files and documents that constitute reliable sources of the information described herein. NAI Capital Cal DRE #02130474