



Casita M Series

Made for Developers.
Ready for living.



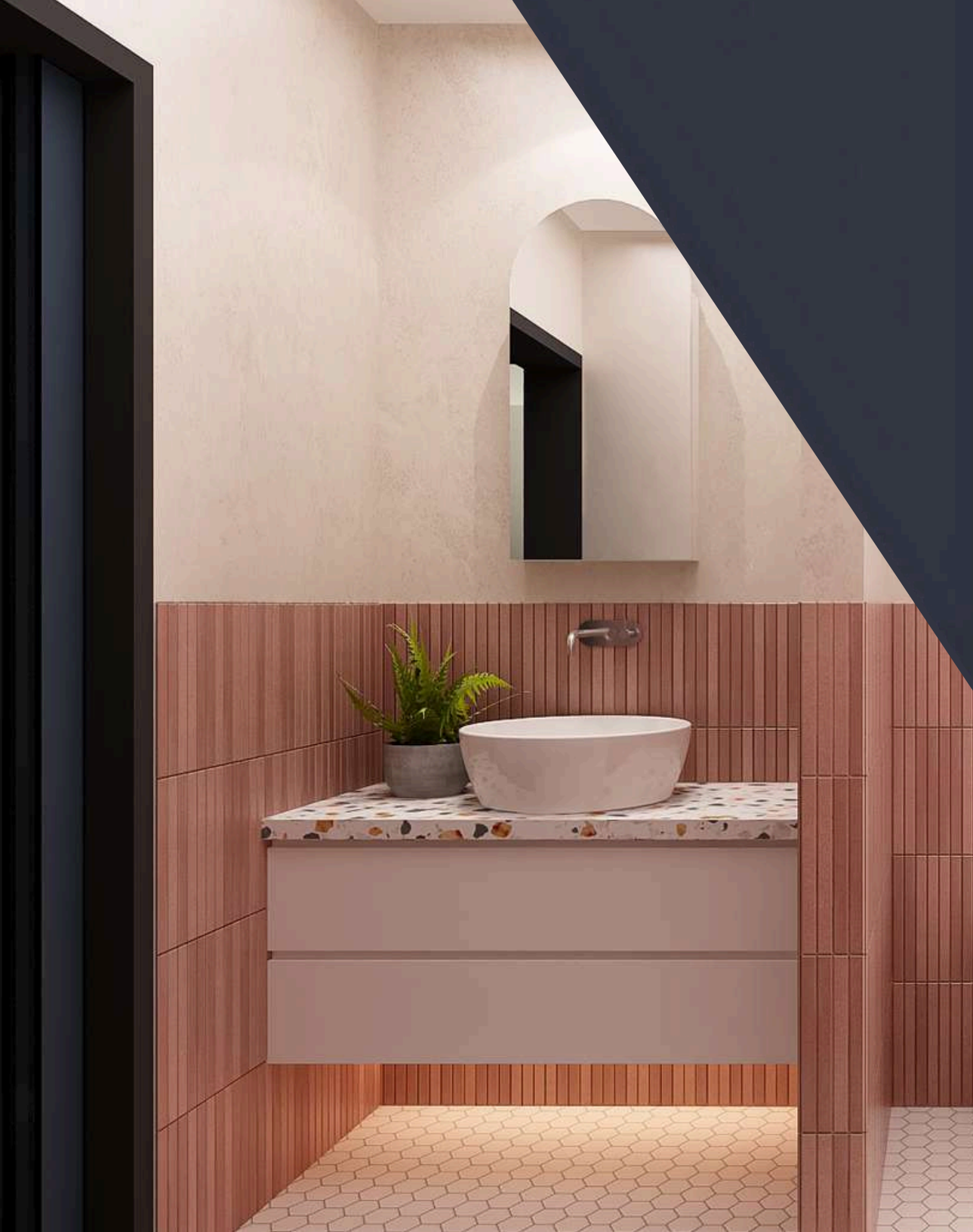
The **M** is now.

Casita **M** is our newest model, a minimalist modular home designed for scale. It's ideal for developers building in remote locations where labor and materials are hard to access.

It offers the same quality, speed, and convenience as our luxury Casita X, but with simpler finishes and a developer-aligned price. Casita **M** is the foundation of our shift from bespoke builds to large-scale, turnkey housing. You place an order, and we'll handle the design, permitting, and construction. Turnkey from contract signing to delivery.

Ready to build. Ready to scale.





Why the Casita **M**

Casita **M** is designed for developers who need high-quality homes without the friction of traditional construction.

It brings factory-built precision to remote sites, removing complexity from sourcing, scheduling, and coordination.

Customizable, efficient, and built for speed, it's a ready-to-deploy solution that keeps your project moving.

Casita M Series



Casita M interiors are thoughtfully designed and adaptable.



Casita M Series



Finishes and layouts
can be customized to
meet your project's
needs.



Casita M Series



Our pre-designed dwellings are created with unparalleled precision and attention to detail.



The Casita **M** Technical Specifications

Casita **M** starts at **₱5,000,000** and includes a queen-sized bedroom, full bathroom, a smartly designed kitchen with appliances, and air conditioning.

Each unit offers 45 square meters of interior space and is delivered move-in ready. It also includes a 15 square meter wrap around decking. **The Casita's footprint totals to 60 square meters.**

Unlike Casita X, which emphasizes bespoke luxury, Casita **M** is optimized for repeatable, developer-driven projects focused on scale, cost-efficiency, and delivery speed.



List of Materials Used

Same turnkey speed. Same scale-ready precision. Ready to build. Ready to scale.

Flooring

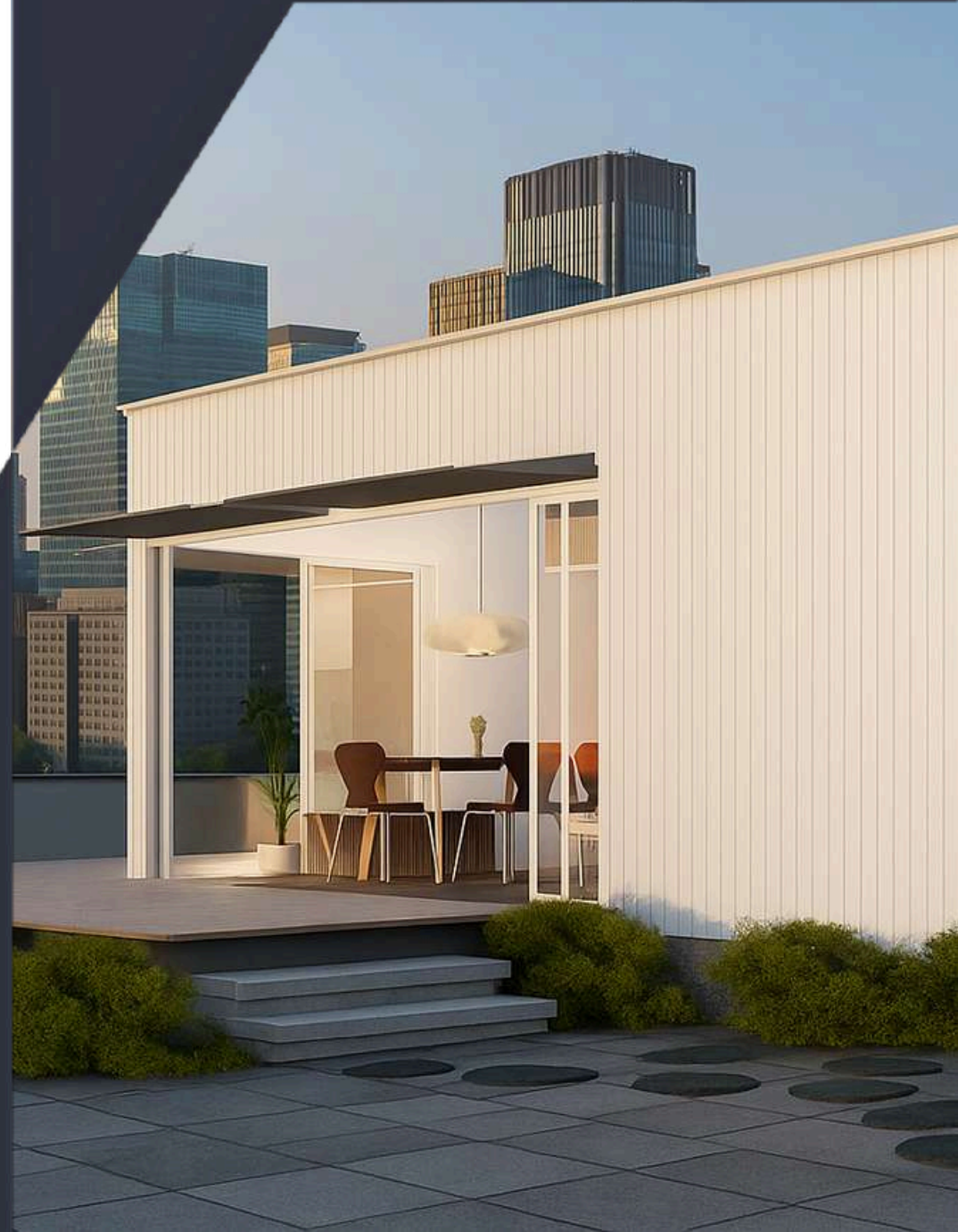
Laminated hardwood

Bathroom

standard tile package + painted wall finishes

Exterior

Wood and/or composite shiplap siding



Casita M Floor Plan

Compact, functional layout optimized for development.

Layout

1 bedroom, 1 bathroom

Floor Space

60 square meters

Exterior Dimensions

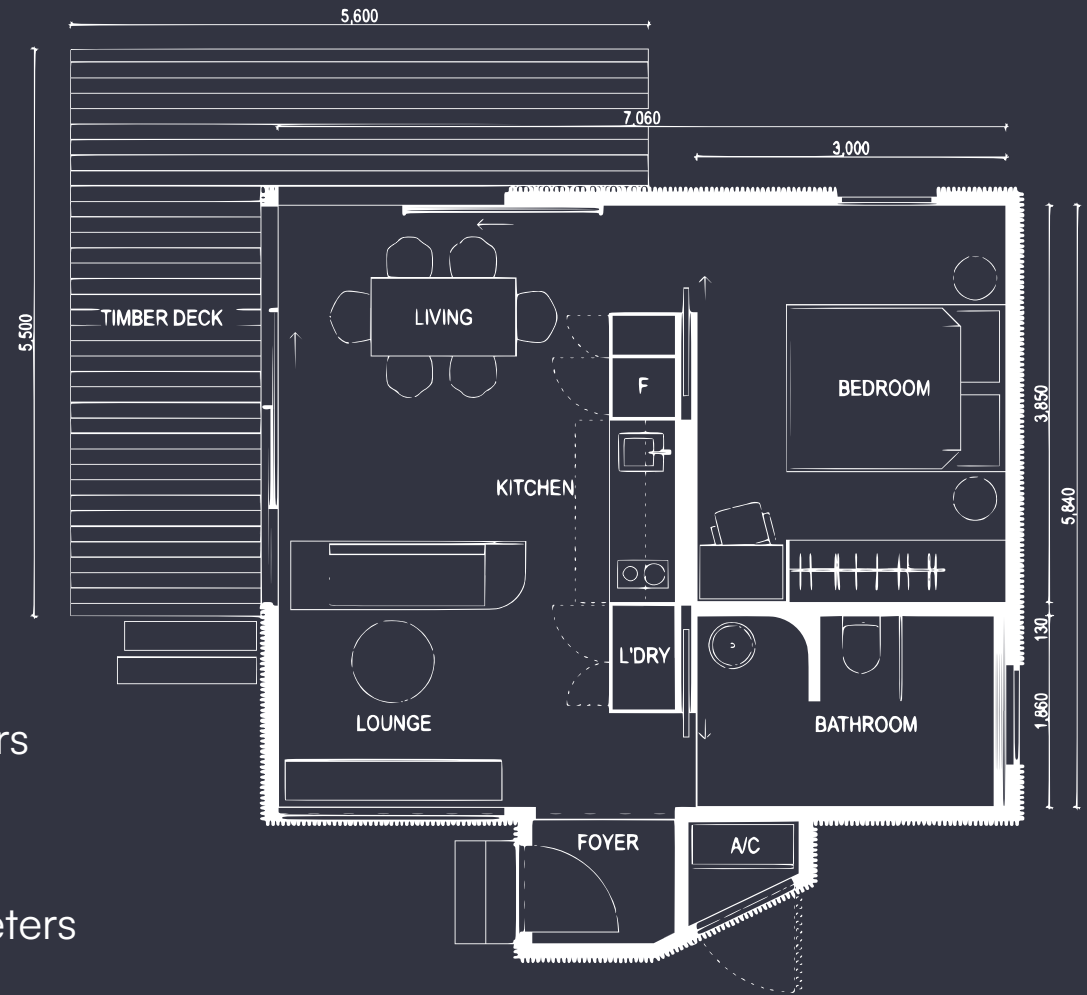
7.3 meters long by 6.1 meters wide (excluding vestibule)

Interior Ceiling Height

Floor to ceiling height averaging 2.5 meters

Exterior Roof Height

Foundation to top of roof height of 3.5 meters



Specifications can be adjusted slightly to meet site-specific or regulatory requirements.



How we build homes

You place an order, and we'll handle the design, permitting, and Turnkey from contract signing to delivery.

01

Select your Casita

Pick the model that best fits your site, your market, and you're intended use case. We'll guide you through it.

02

On Site Assessment

Our team visits your property to confirm fit, placement, and access. Need help with master planning? We've got you covered there too.

03

Sign Construction Contract

Lock in your Casita with a single, straightforward agreement. Once the construction contract is signed, we begin fabrication of your unit in our factory. Normal lead times are 3-4 months per unit.



How we build homes

You place an order, and we'll handle the design, permitting, and Turnkey from contract signing to delivery.

04

Turnkey Permitting

We manage paperwork and approvals so you don't have to.

05

Site Prep Begins

We coordinate foundation setup and utilities connection. For certain projects, we'll coordinate with your utility provider to extend access to your site.

06

Delivery & Installation

Your Casita arrives fully built and is installed in days, with minimal disruption.

07

Final Walkthrough

We hand over a finished, move-in ready unit—no punch list, no surprises.



The **M** is ready for living.

Casita **M** is 33 percent cheaper than Casita X because we streamlined every line item: simpler interior joinery, laminate cabinets instead of hardwood veneer, and clean painted ceilings in the living and bedroom zones, all tuned for repeatable, developer-driven scale and speed.

Casita M Series

inquire@hivedwellings.us
+639171647371

