

BATRIBIKE[®]

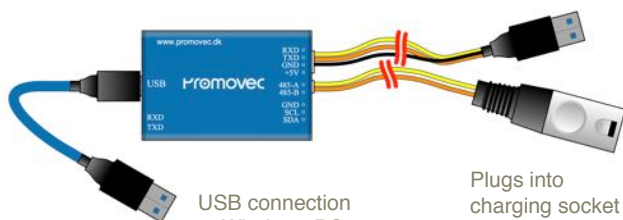
ELECTRIC BICYCLES

Promovec[®]

Battery Tester

This simple to use, Low Cost battery tester has been designed by ProMovec specifically for their range of Lithium eBike Batteries.

(As fitted to the BATRIBIKE Range of European Electric Bikes)



USB connection
to Windows PC

Plugs into
charging socket
on carrier battery
(Standard and
XL versions)

**Available Now to
Official Battribike
Dealers**

ALPHA



**OMEGA
SIGMA**



**DELTA
& TEN**

- Have confidence in the Status of Battery Health
- Offer your Customers a Battery Test Printout at point of service
- Avoid costly transportation costs associated with Lithium Batteries
(They are classed as dangerous goods when transported separately to the eBike)
- Vastly reduces time taken for Warranty claims
- Usually no need for sending the battery to Battribike for analysis

*These models will
be added later*



PERDU

QUINTESSENTIAL

Battery Report



Battery Name: 50745-BL
Battery Serial NO.: A09DC01JX0017
Data Read Time: 02-02-2017 16:05

1. Battery Data:

Voltage: 41.68 V
CycleCount: 1
State Of Charge: 100%

Full Chg Capacity: 7.54 Ah
Temperature: 13.85°C
Battery Time: 2-2-2017 18:20

Remaining Capacity: 7.54 Ah
State Of Health: 100%

2. Lifetime Data:

Max Temperature: 39.9°C
Min Voltage: 30.00 V

Min Temperature: 6546°C
Max Dsg Current: -12.46 A

Max Voltage: 41.84 V
Max Chg Current: 3.00 A

Short
Printout
gives
snapshot
info



100%

State Of Health



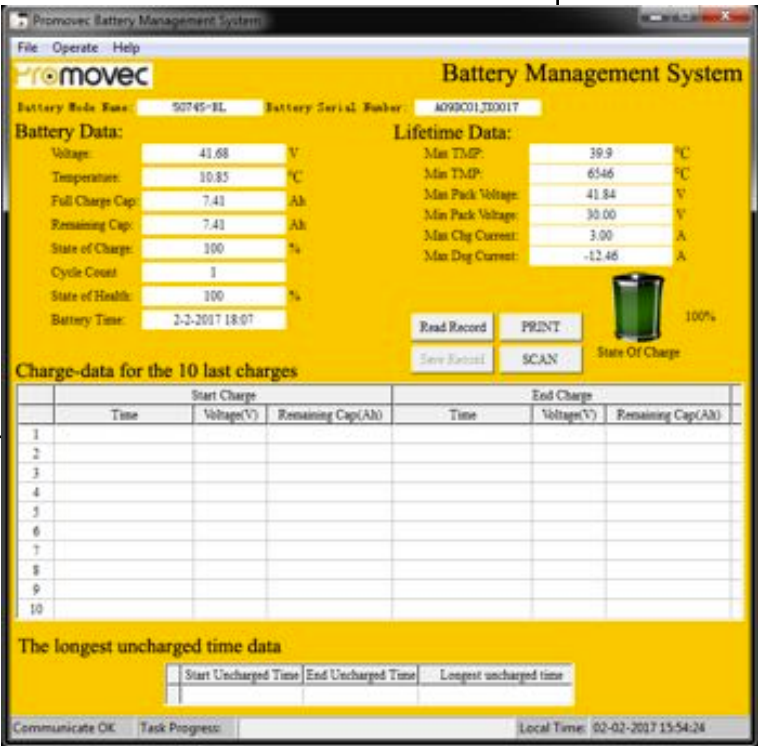
1

Cycle Count



100%

State Of Charge



Quick scan
shows Status
and Charge
Level

Battery Report



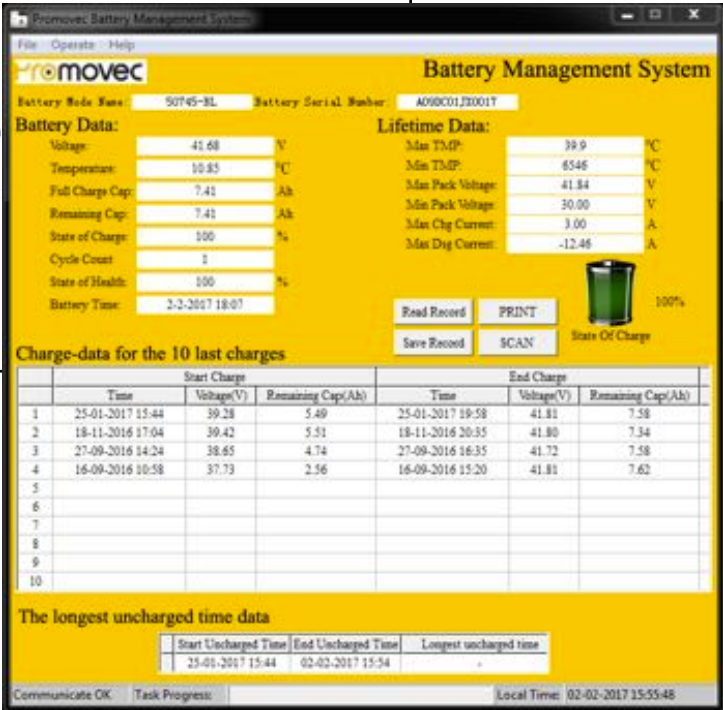
Battery Name: 50745-BL
Battery Serial NO.: A09DC01JX0017
Data Read Time: 02-02-2017 16:05

1. Battery Data:					
Voltage: 41.68 V	Full Chg Capacity: 7.54 Ah		Remaining Capacity: 7.54 Ah		
Cycle Count: 1	Temperature: 13.85 °C		State Of Health: 100%		
State Of Charge: 100%	Battery Time: 2-2-2017 18:20				
2. Lifetime Data:					
Max Temperature: 39.9 °C	Min Temperature: 6546 °C		Max Voltage: 41.84 V		
Min Voltage: 30.00 V	Max Dsg Current: -12.46 A		Max Chg Current: 3.00 A		
3. The Longest Uncharged Time:					
Start from: 25-01-2017 15:44	End at: 02-02-2017 16:06		Longest uncharged time: - Days		
4. Record Data (latest 10 times):					
Start Time	Start Voltage	Start Capacity	End Time	End Voltage	End Capacity
25-01-2017 15:44	39.28 V	5.49 Ah	25-01-2017 19:58	41.81 V	7.58 Ah
18-11-2016 17:04	39.42 V	5.51 Ah	18-11-2016 20:35	41.80 V	7.34 Ah
27-09-2016 14:24	38.65 V	4.74 Ah	27-09-2016 16:35	41.72 V	7.58 Ah
16-09-2016 10:58	37.73 V	2.56 Ah	16-09-2016 15:20	41.81 V	7.62 Ah

Battery Report gives longest uncharged time together with date and times of last 10 charges

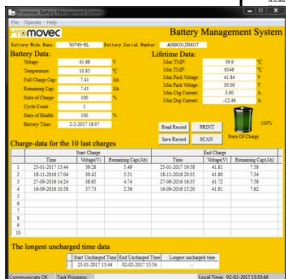


State Of Health



Reading the Full Record gives more comprehensive information

Record can be saved and last 800 charges interrogated for full diagnostic analysis



Easy to Use comprehensive Windows based software

Software updates available on the Dealer Area of the **BATRIBIKE** website

Quick Scan function performed in seconds to give a Status Report

(Full scan takes a little longer as it downloads the last 800 charge cycles)

Automatically reads Battery Type and Battery Serial Number which is stored internally in the Battery Management System

- Shows time since last charge
- Maximum time between charges
- Remaining battery capacity
- Colour Coded Health indication
- Cycle Count *



Highlights where Warranty Conditions have not been met

No more awkward discussions with customers claiming to have regularly charged their battery - you can see the time and date of the last 800 charging operations

* One cycle is a full charge and discharge.

If a fully charged battery is only discharged by 20% and then recharged this counts as a fifth of a cycle. It would take a series of 5 charges like this to make up a Full Cycle

180226

ORDER A BATTERY TESTER TODAY

Talk to Jackie in the BATRIBIKE Office

01427 - 787774

Battery Tester at **Only £40 + VAT**

Unit 4, Ingleby Grange, Ingleby
Lincoln, UK. LN1 2PQ

BATRIBIKE
ELECTRIC BICYCLES

© Batribike Limited 2018
Registered in England No. 11091589
VAT Registration No. 283 3761 83