






Assembly Manual

Speed sensor - 60029



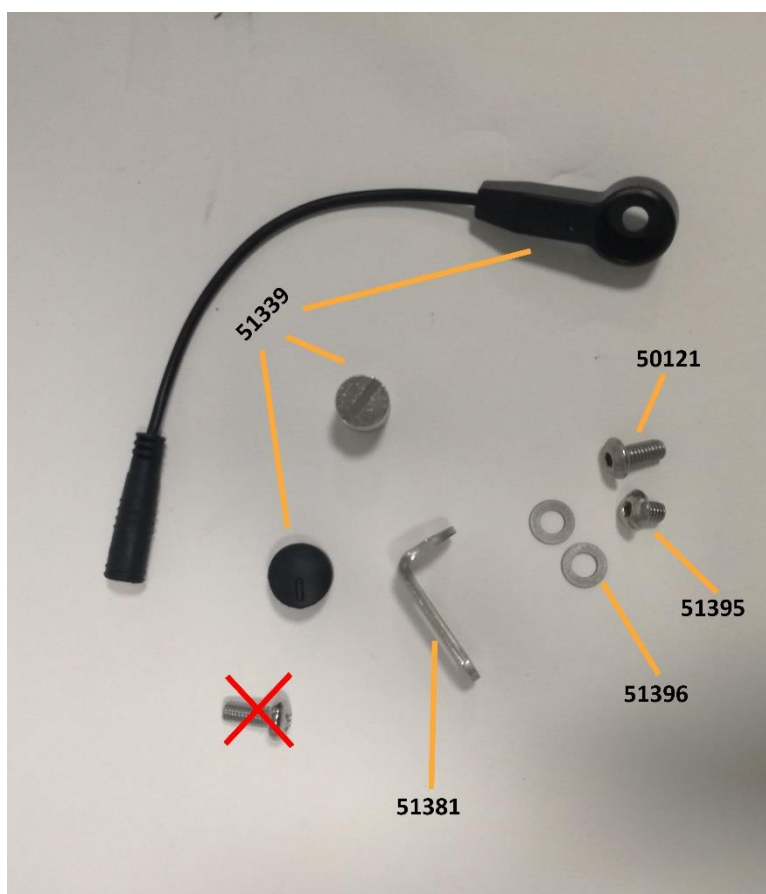
Date: 2018.01.10

Overview of the parts used for the assembly.

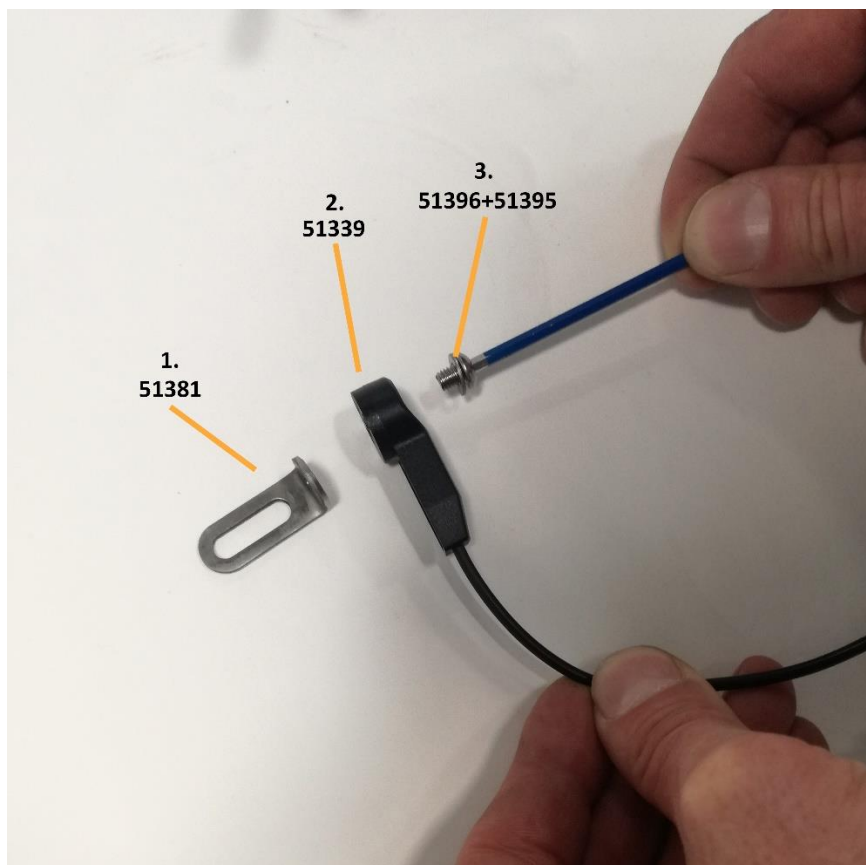
Item number	Description	Pcs.	Picture
51339	Sensor, wheel speed f.cen	1	
51381	Bracket for wheel speed s	1	
50121	Screw for bottompart 5x10	1	
51395	Screw for speed sensor (5	1	
51396	Disc for speed sensor M5	2	

Guide of assembly – step by step

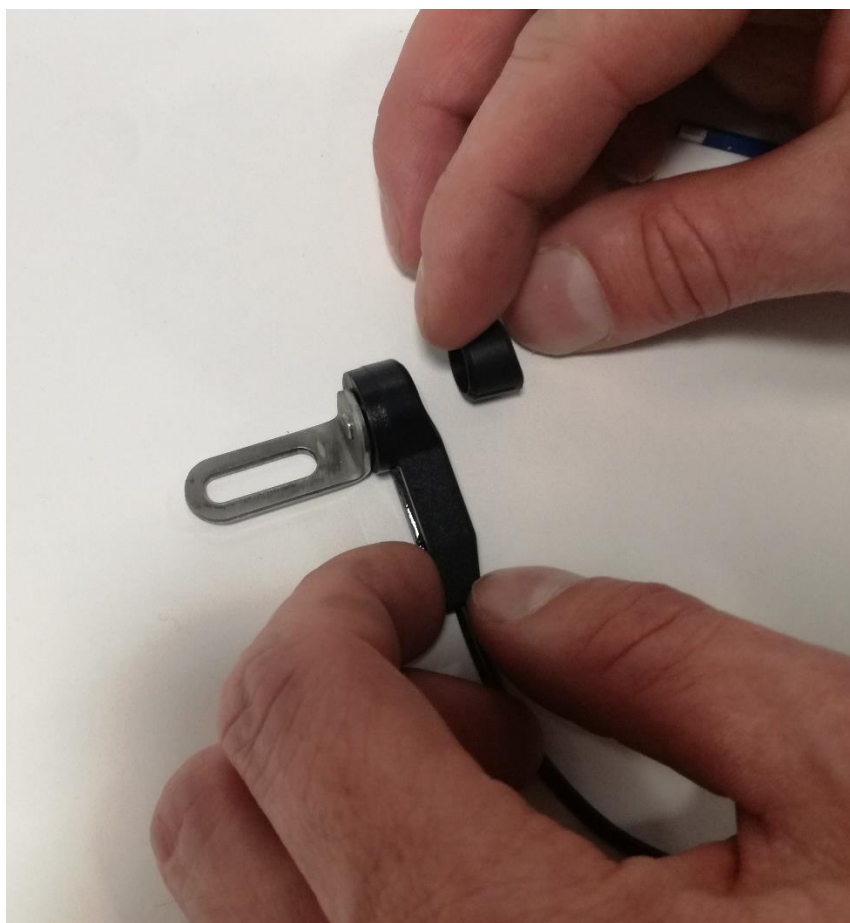
Start by taking the parts for the speed sensor.



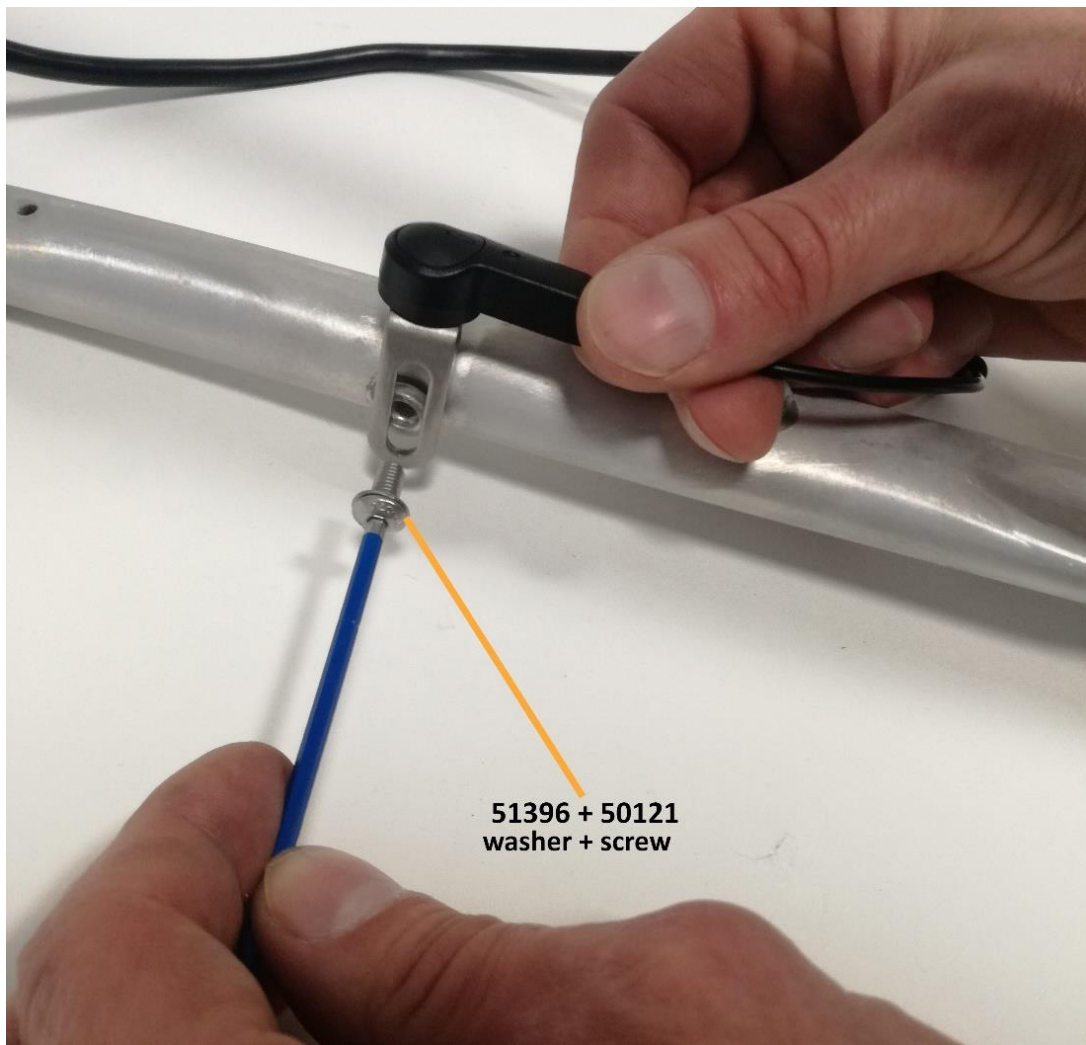
Assemble the speed sensor in the order as the picture (bracket, speed sensor, washer and screw)



Add the rubber cap to the end of the speed sensor.



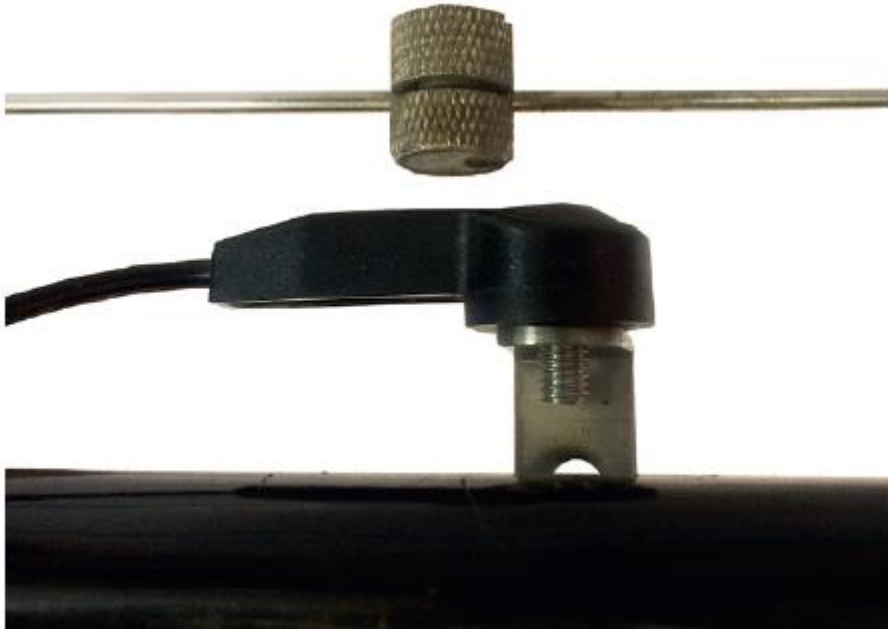
Mount the speed sensor to the frame.



Connect the speed sensor to its plug on the center motor.



It is recommended to place the magnet with a distance around 3-10mm from the speed sensor.



Test the bike, if the error code number 7 is shown adjust the speed sensor