



CORNECT®  
Systems

■ FAST. EASY. UNIQUE.



# We are CORNECT®

In 2016, CORNECT® was established as a separate division of FELDMANN GmbH, a leading company for system solutions made of aluminum, stainless steel, and glass. The vision: a modular frame system for trade fair construction and presentation areas that offers new perspectives for the trade fair and event industry. What sets us apart? Ho-

nesty and excellent service. We keep our word, are always there for you, and deliver quickly while others are still planning. CORNECT® simplifies system construction – from planning and ordering to assembly and disassembly. CORNECT® is innovative, robust, and flexible – made for beginners and professionals alike. Easy to plan, easy to handle, and quick to assemble.

Because every project is different, we offer solutions that adapt – not the other way around.



### SYSTEM 50 LUX

Seamlessly integrable LED system for backlighting.

P. 22

### SYSTEM CUBE

The solution for lightweight constructions and ceiling suspensions including 360° backlighting.

P. 34

### SYSTEM 50 BASIC

The modular construction system for stable structures.

P. 08

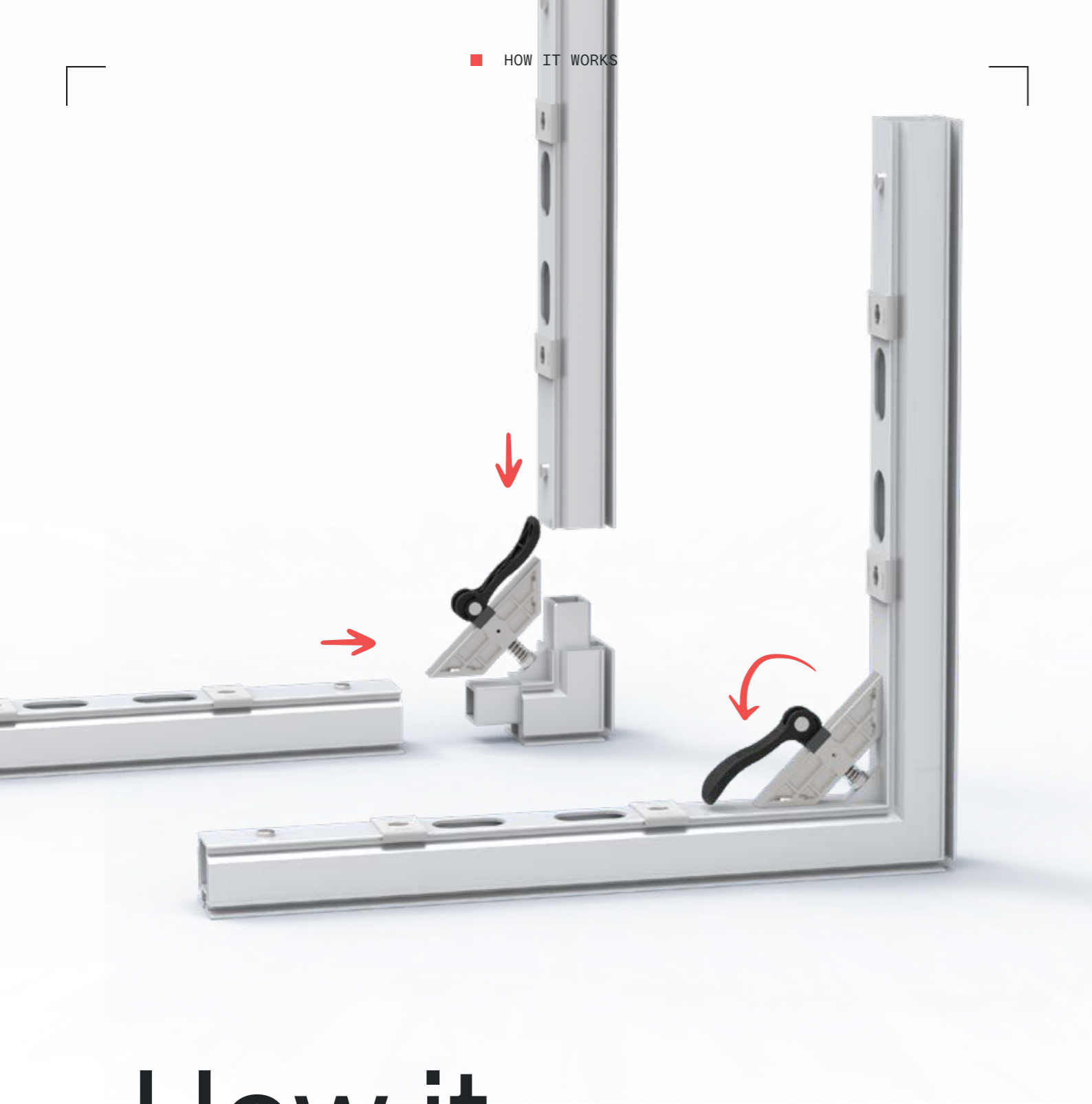
### SYSTEM 170

Light walls with backlighting on both sides, freestanding or combinable with System 50.

P. 28

# OVERVIEW

SYSTEM 50 BASIC	08 – 21
SYSTEM 50 LUX	22 – 27
SYSTEM 170	28 – 33
SYSTEM CUBE	34 – 37
TRANSPORT SOLUTIONS	38 – 41



■ ROBUST & LIGHT-WEIGHT ALUMINUM PROFILES

Absolute design freedom thanks to specially developed aluminum profiles – lightweight, stable, and easy to assemble. Available in flexible lengths, powder-coated, or as a curved version for individual designs with impact.

■ PATENTED CORNER CONNECTOR

Connecting aluminum profiles has never been easier! Our corner connectors are available with either an integrated quick-release system or a simple screw connection.

■ VARIOUS FILLING OPTIONS

Our high-quality fabric options and panel materials offer a wide range of possibilities for impressive presentations. Piping and Velcro systems ensure easy installation. High-quality printing processes guarantee brilliant colors and razor-sharp images. Perfect for every appearance!

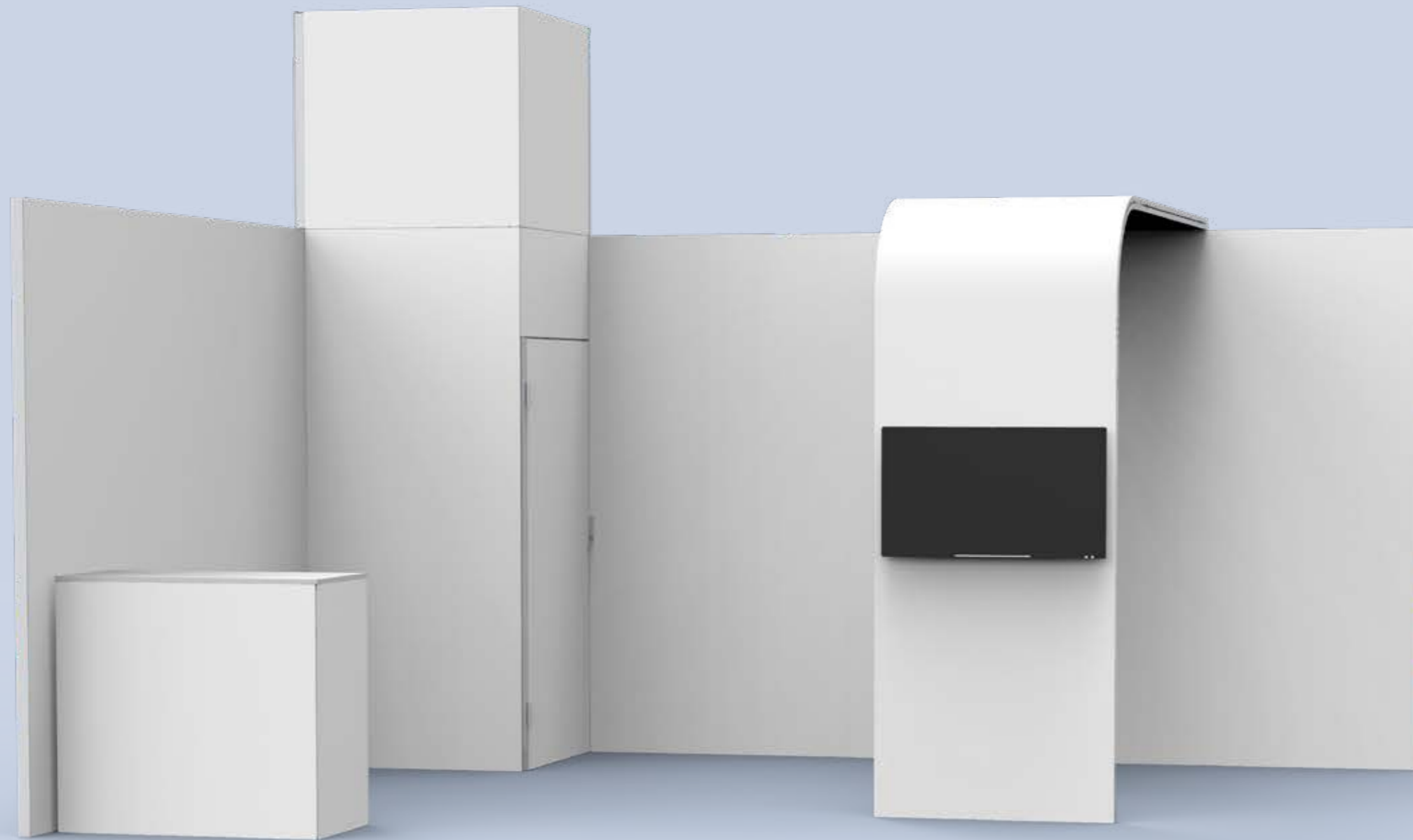
■ FRAME CONNECTOR


The CORNECT® philosophy of simple connections permeates our entire system. Thanks to integrated guides in the profiles, frame connection is intuitive and always ensures stable, simple, and secure connections. This saves time and hassle.

# How it works


## Why CORNECT®?

CORNECT® has revolutionized the world of temporary construction with its innovative approach and developed novel corner connectors that enable fast and flexible profile connections.




-  CUSTOM DIMENSIONS


---

-  FILLINGS  
fabric, panel

---

-  COMPATIBLE  
System 170 , System 50 Lux

---

-  LUMINOUS

# System 50 Basic

System 50 Basic is based on high-quality aluminum profiles and patented corner connectors, which make it easier and faster to assemble presentation surfaces.

Thanks to its modularity, the system is extremely flexible and the frame dimensions can be completely customized. There are no limits to your creativity. The system remains easy to understand and can be assem-

bled without specialist knowledge. Thanks to the high stability of the system, large structures can be realized, including system statics. Our extensive range of accessories rounds off your professional appearance.





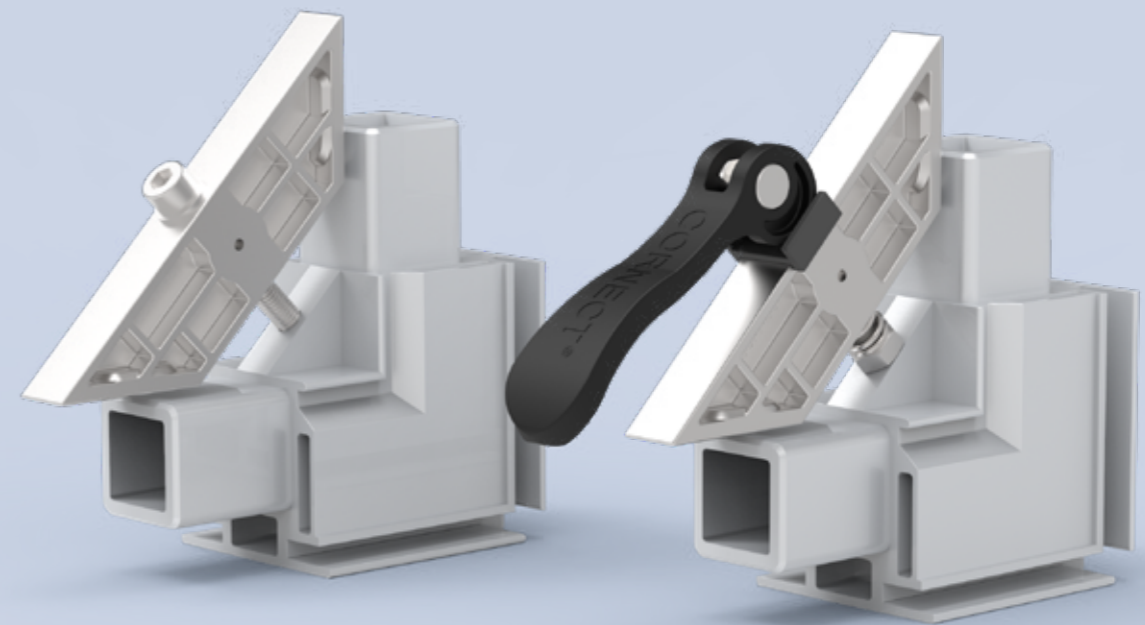
## CORNER CONNECTORS

CORNECT® is based on the idea of connecting profiles easily and simply. The patented corner profile connectors are available in two versions: as a tool-free clamping variant or with an integrated screw connection. Both ensure flush and stable connections between CORNECT® profiles.

### Versions

SCREW CONNECTORS

CLAMPING CONNECTORS



### ■ THE SIMPLE

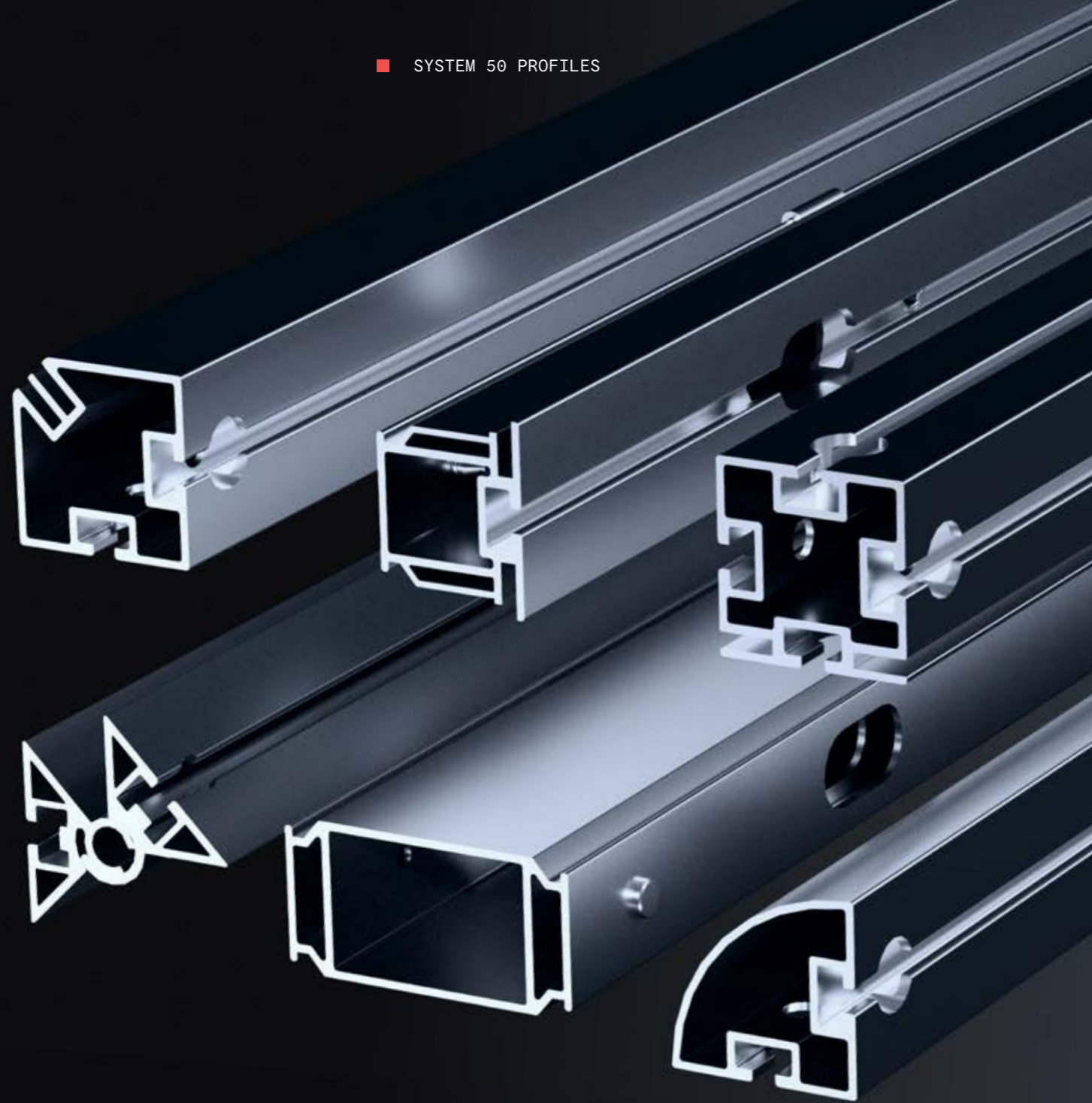
## CORNECT® Easy

Experience the perfect combination of effortless handling and maximum stability with EASY CORNECT® screw connectors – the ideal choice for permanent installations.

### ■ THE EVEN SIMPLER

## CORNECT® Plus

EASY CORNECT® PLUS technology enables quick assembly without compromising stability – no tools required. Perfect for frequent assembly and disassembly.



## PROFILES

Maximum design freedom with just 6 specially developed aluminum profiles. These lightweight profiles offer complete flexibility and easy assembly. Available in custom lengths and with an anodized surface – also curved on request. Looks strong and lasts forever.



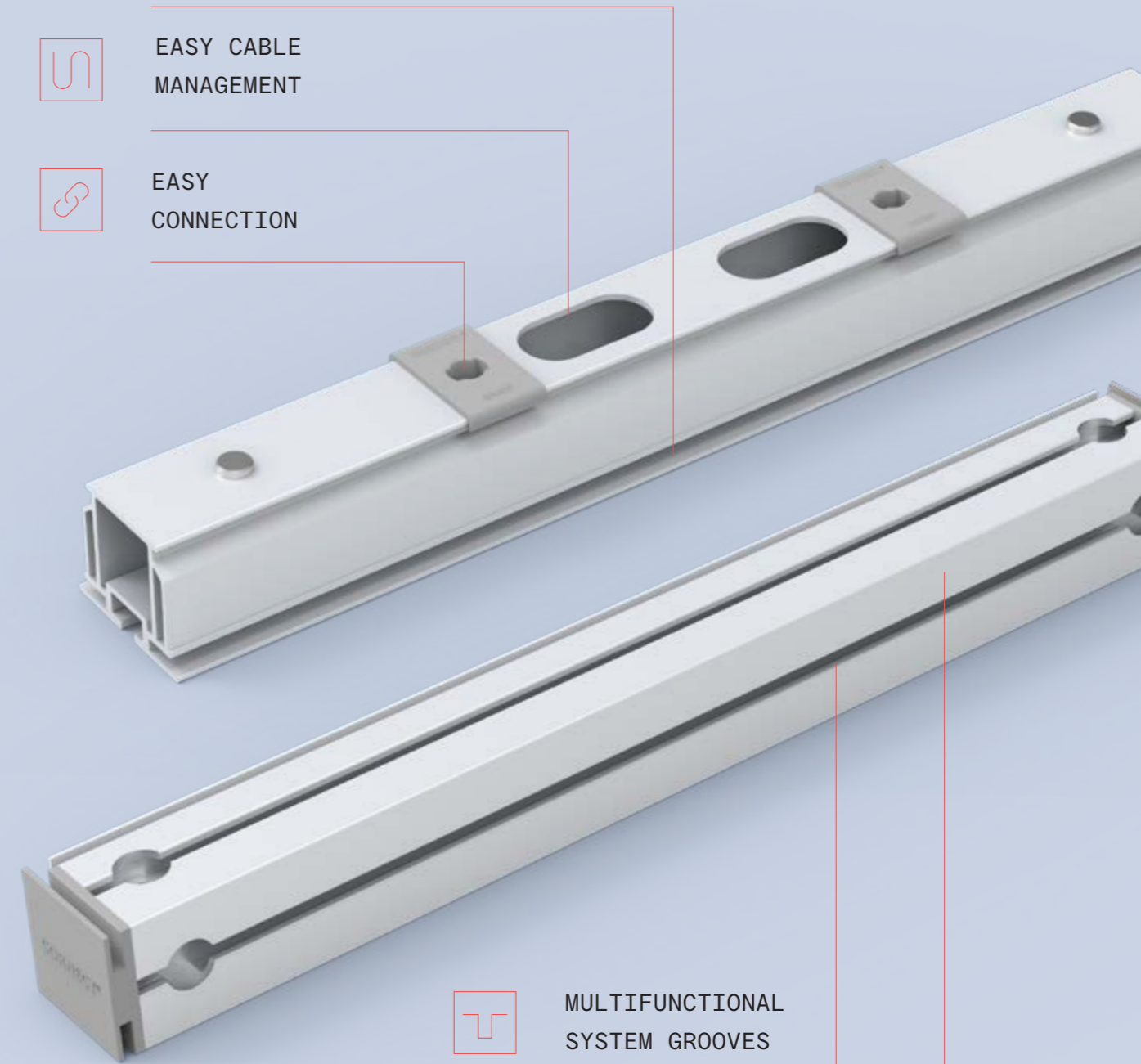
UNCOMPLICATED FABRIC AND  
PANEL INSTALLATION



EASY CABLE  
MANAGEMENT



EASY  
CONNECTION



MULTIFUNCTIONAL  
SYSTEM GROOVES



HIGH-QUALITY  
ANODIZED COATING



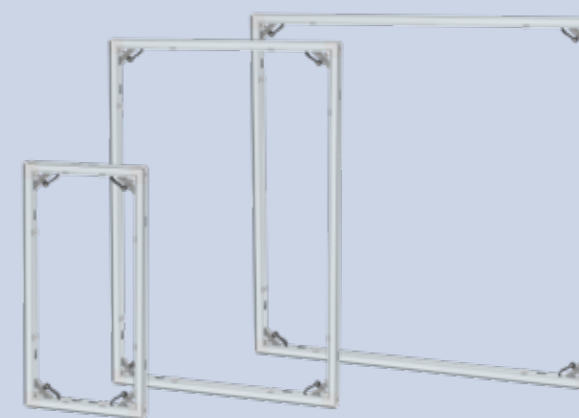
FULLY  
CUSTOMIZABLE



# FRAMES

## GRID DIMENSIONS

Custom dimensions available

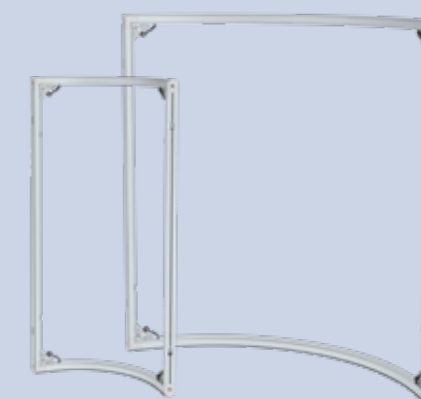


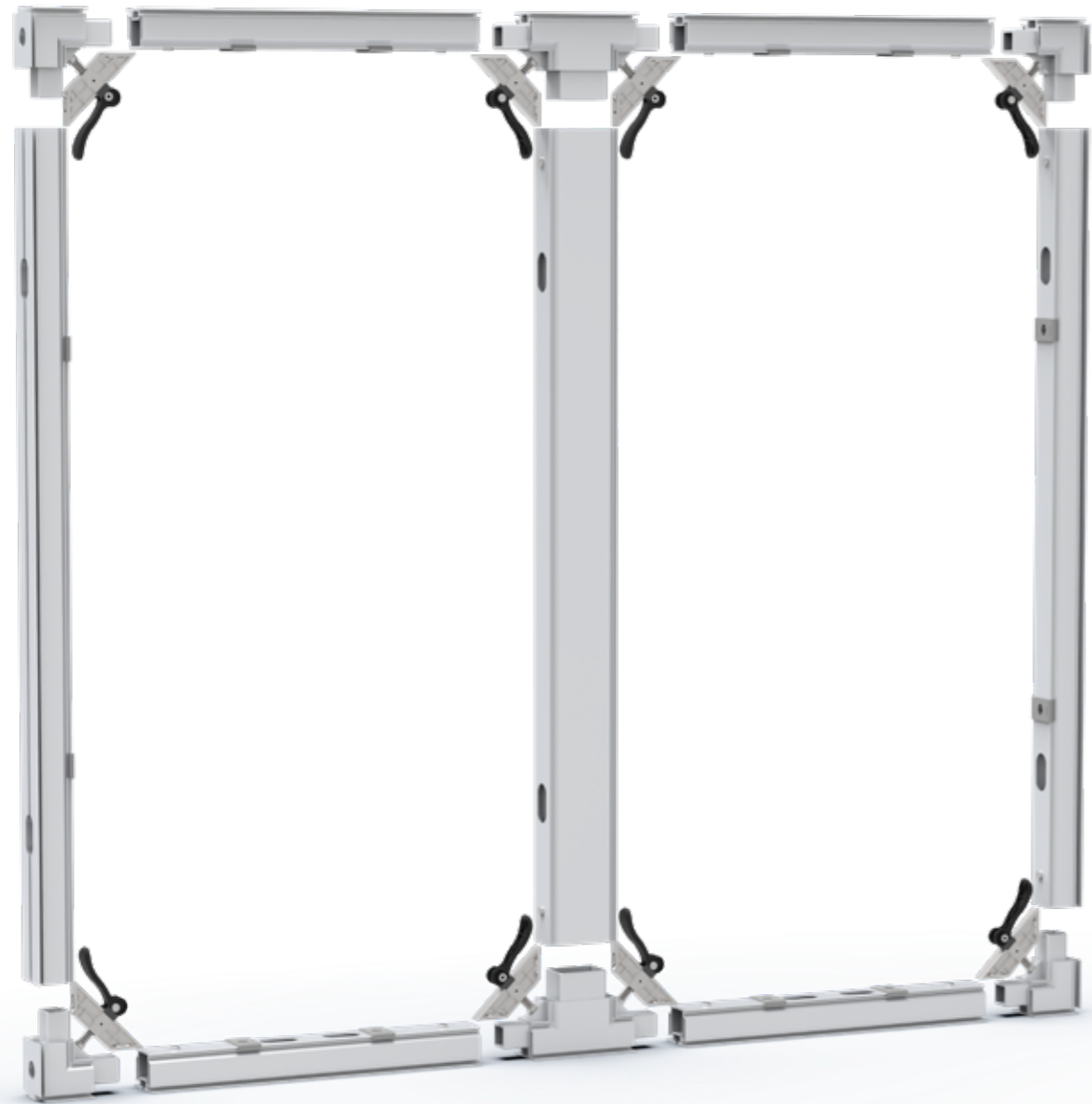
### ■ STRAIGHT FRAMES

245 x 2940	490 x 2940	980 x 2940	1470 x 2940	1960 x 2940	2450 x 2940
245 x 2450	490 x 2450	980 x 2450	1470 x 2450	1960 x 2450	2450 x 2450
245 x 1960	490 x 1960	980 x 1960	1470 x 1960	1960 x 1960	
245 x 1470	490 x 1470	980 x 1470	1470 x 1470		
245 x 980	490 x 980	980 x 980			
245 x 490	490 x 490				

### ■ CURVED FRAMES

490 x 2940	980 x 2940
490 x 2450	980 x 2450
490 x 1960	980 x 1960
490 x 1470	980 x 1470
490 x 980	980 x 980
490 x 490	980 x 490





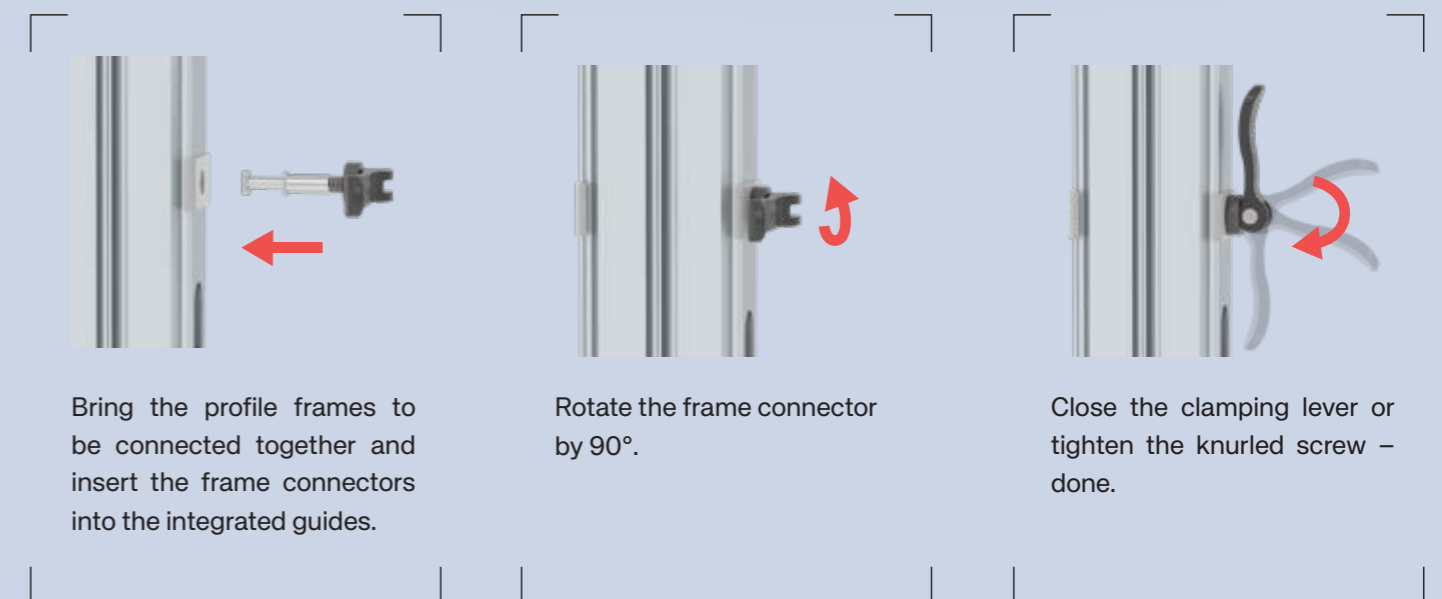
## FRAME CONSTRUCTION & COMBINATION OPTIONS

With CORNECT® systems, you can assemble profiles and corner connectors to create modular exhibition walls or presentation areas. By combining corner and T-pieces with the corresponding profiles, long exhibition walls can be created in a material- and cost-efficient manner.



### ■ FRAME-CONNECTORS

With our “Easy” and “Plus” frame connector variants, you can not only connect frames of various dimensions to each other, but also attach corner and connecting profiles. Here, too, we remain true to our principles – assembly is very easy, extremely quick, and, of course, tool-free!



Bring the profile frames to be connected together and insert the frame connectors into the integrated guides.

Rotate the frame connector by 90°.

Close the clamping lever or tighten the knurled screw – done.

## ■ FABRIC FILLINGS

Our textile fillings offer maximum flexibility. Whether brilliant UV printing or foldable sublimation printing – the colors impress with their depth and durability. Our blockout fabric prevents annoying translucency effects from ambient light.

Everything is made to fit perfectly – quick installation and a high-quality look are guaranteed.

### Versions

Blockout fabric with UV printing

Blockout fabric with sublimation printing

Fabric laminated onto rigid foam board



## ■ PANEL FILLINGS

Our panel fillings ensure smooth, flawless surfaces – ideal for high-quality presentations. They are extremely stable, easy to install, and perfectly matched to the system dimensions.

245 x 2940	490 x 2940	980 x 2940
245 x 2450	490 x 2450	980 x 2450
245 x 1960	490 x 1960	980 x 1960
245 x 1470	490 x 1470	980 x 1470
245 x 980	490 x 980	980 x 980
245 x 490	490 x 490	
245 x 245		



- LIGHTING (1)
- METAL MOUNTING ELEMENT (2)
- SHELVES (3)
- TV MOUNT (4)
- BROCHURE HOLDER (5)
- WOOD MOUNTING ELEMENT (6)
- CONNECTION OF LED-TILES (7)
- BUILT-IN SHELVES (8)
- FLOOR MOUNTING (9)
- FRAME CONNECTORS (10)
- CONNECTION TO COMPETITORS (11)

## ACCESSORIES

The extensive range of accessories opens up numerous possibilities for customized trade fair and event solutions. Everything fits perfectly with System 50 – stable, versatile, easy to integrate.





# System 50 Lux


Light attracts attention and creates atmosphere – with System 50 Lux, you can achieve both at the touch of a button. High-performance LEDs installed throughout ensure uniform, brilliant backlighting – ideal for brand messages, graphics, or atmospheric surfaces.

Pre-mounted on sturdy aluminum composite panels, the system is delivered ready to connect – no screws,


no tinkering, no tools. As usual with System 50 Basic, simply flip the clamping lever, plug it in – done. This turns a system element into a luminous eye-catcher.

Thanks to plug & play, setup is done in minutes. The LEDs are dimmable and can be perfectly adapted to the room, mood, or time of day. And best of all: they can be seamlessly integrated into System 50 Basic and System 170 –


without visible transitions and without special solutions. Whether as a back wall, illuminated surface, or eye-catcher – System 50 Lux adapts to any concept.

-  CUSTOM DIMENSIONS


---

-  **FILLINGS**  
Fabric

---

-  **COMPATIBLE**  
System 170 , System 50 Basic

---

-  **LUMINOUS**

## ■ CONNECTORS

Our flat corner connectors prevent any shadowing while ensuring maximum stability.

## ■ LED STRIPES

High-performance LEDs with special lenses ensure optimal and comprehensive light distribution. Precise pre-assembly guarantees uniform illumination. The interplay of light and fabric filling produces a brilliant result.

## ■ PROFILES

The highly stable Lux profiles feature white recesses for our frame-to-frame connectors to prevent shadowing.



## FABRIC FILLINGS

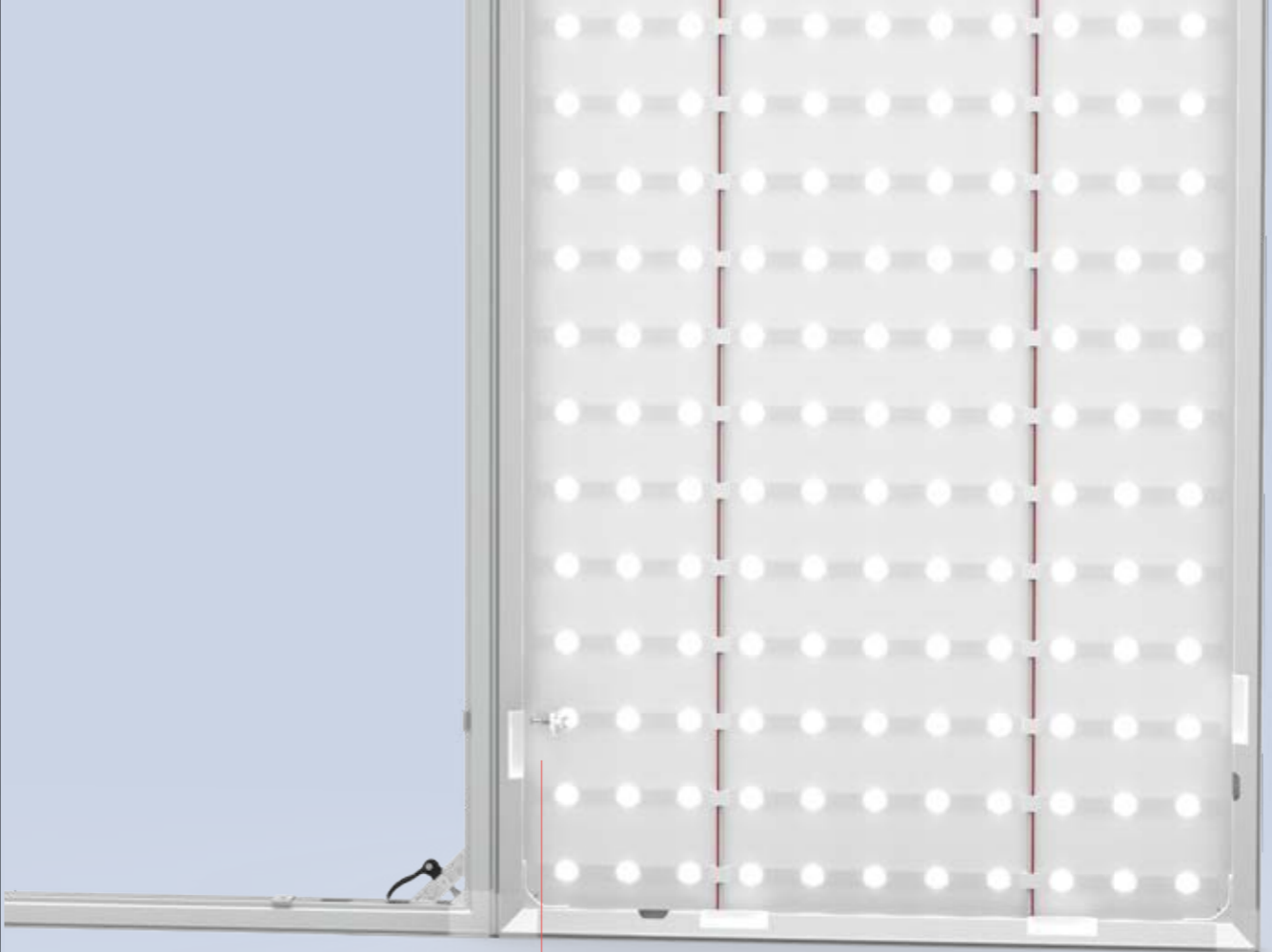
Our backlight fabrics are the highlight of any light frame. Luminosity, motif depth, and color rendering for professionals – this material is the eye-catcher in your CORNECT® Lux system.

### Versions

Backlight fabric with UV printing



# LUX FRAMES



## ■ FRAME-TO-FRAME

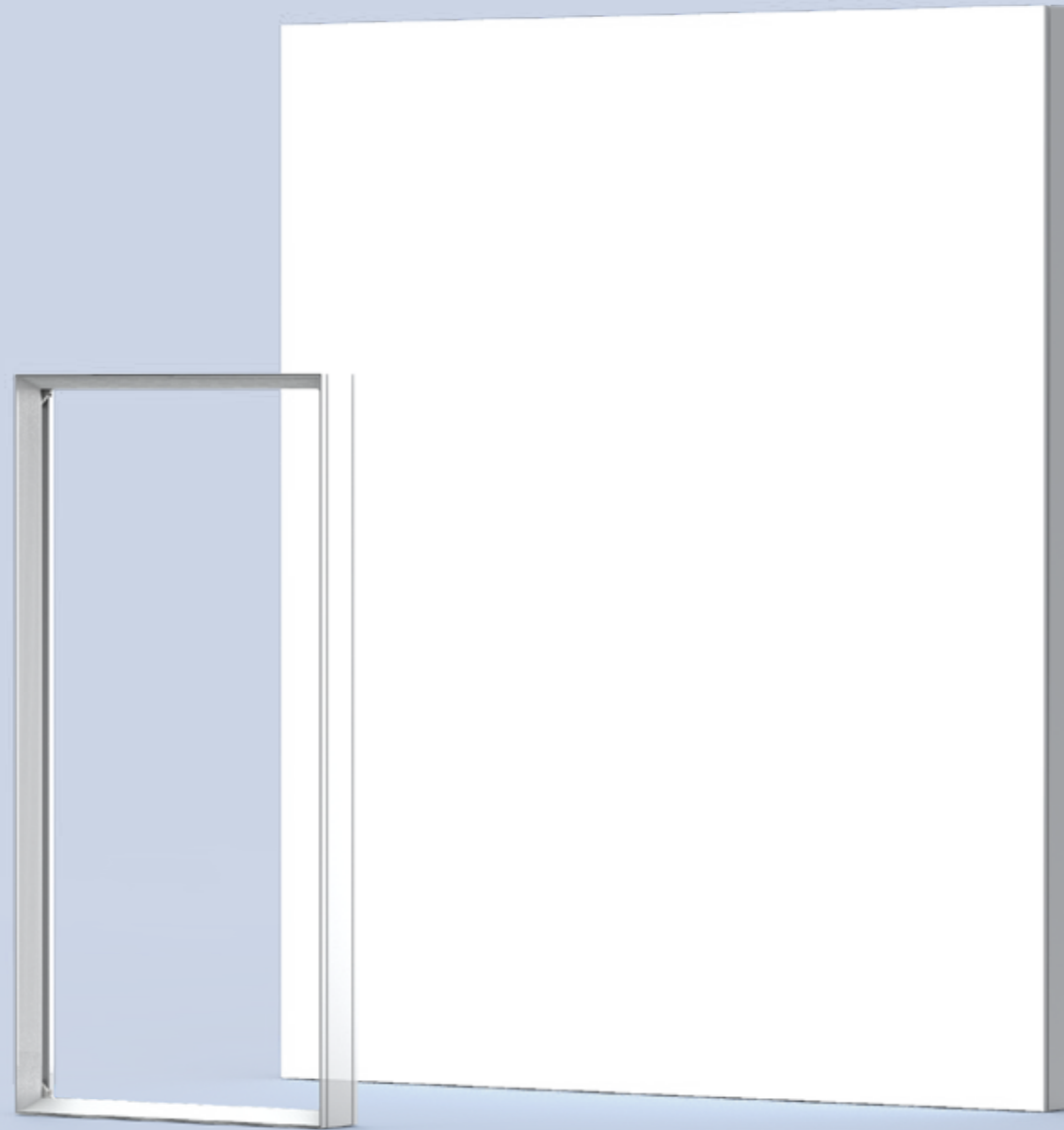
With hidden frame-to-frame connectors, System 50 Lux can be connected directly to System 50. The white connectors prevent shadows from forming.



# GRID DIMENSIONS

## ■ LUX FRAMES

490 x 2450	980 x 2450
490 x 1960	980 x 1960
490 x 1470	980 x 1470
490 x 980	980 x 980




# System 170


CORNECT® System 170 makes brands visible – illuminated on both sides and up to 3 meters high, it attracts attention and transforms trade fair or presentation modules into real eye-catchers. Our premium LED modules provide great luminosity and brilliant colors, so that your brand is shown to its best advantage. The system is easy to assemble and di-

assemble thanks to pre-assembled modules. The sturdy profiles protect the LEDs from impact and external influences and ensure a long service life.


System 170 can be flexibly combined with System 50 Basic and Lux. This opens up creative possibilities for presentations of all kinds.

-  CUSTOM DIMENSIONS


---

-  **FILLINGS**  
Fabric

---

-  **COMPATIBLE**  
System 50 Basic, System 50 Lux

---

-  **LUMINOUS**

# FRAMES

Grid dimensions

980 x 2940	1470 x 2940	1960 x 2940	2450 x 2940
980 x 2450	1470 x 2450	1960 x 2450	2450 x 2450
980 x 1960	1470 x 1960	1960 x 1960	



# CONNECTORS

With CORNECT® corner connectors, you can assemble System 170 in no time at all. Simply connect the pre-assembled LED profiles and fasten them together – and everything is secure and stable.



■ SCREW CONNECTORS

■ CLAMPING CONNECTORS

# FRAME PROFILE

The entire frame design is geared towards perfectly illuminating your advertising message. With a depth of 170 mm, the light can unfold optimally within the frame. Thanks to the identical size grid as System 50, the frames of both product lines can be perfectly combined.

## ■ PROFILES

The profile offers sufficient space for the completely pre-assembled LED modules and their cable routing – for particularly fast assembly and disassembly times and shadow-free lighting accents.

## ■ LED-MODULES

With a color temperature of 6500 Kelvin (daylight white), your brand and product colors are reproduced realistically.

## ■ FILLINGS

Our backlight fabrics are the highlight of any light frame. Luminosity, motif depth, and color reproduction for professionals – this material is the eye-catcher in your CORNECT® System 170.

## ■ CONNECTION

System 170 can be combined with System 50 Basic and System 50 Lux. This versatility means there are no limits to your creativity.




# System Cube


The Cube system gives every exhibition stand an impressive three-dimensional effect. Whether placed on the stand or suspended, the Cube is extremely versatile.

Our high-quality Cubes are optimized for maximum illumination. The fabric is evenly lit by a 360° LED light – without shadows, but with a strong long-distance effect. The color printing on the fabric impres-


ses with brilliant colors and the finest details. Thanks to the lightweight material, the Cube is easy to transport and store. Assembly is quick and easy using the keder rail system.

-  CUSTOM DIMENSIONS


---

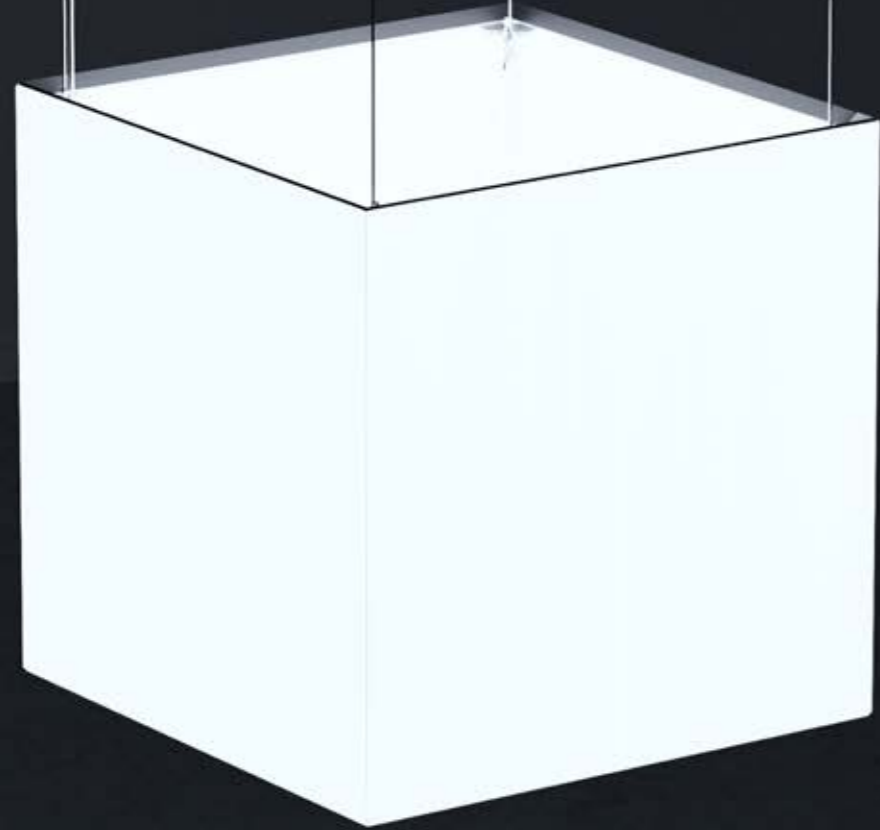
-  **FILLINGS**  
Fabric

---

-  **COMPATIBLE**  
System 170 , System 50 Lux

---

-  **LUMINOUS**



Custom dimensions available

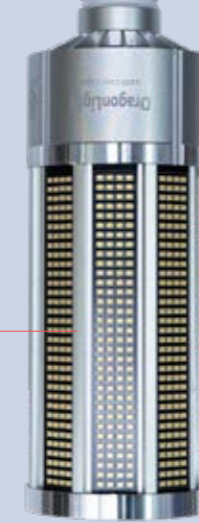
Available dimensions

490 x 490 x 490	980 x 980 x 1470
490 x 490 x 980	1470 x 1470 x 980
980 x 980 x 980	1470 x 1470 x 1470

# CUBE

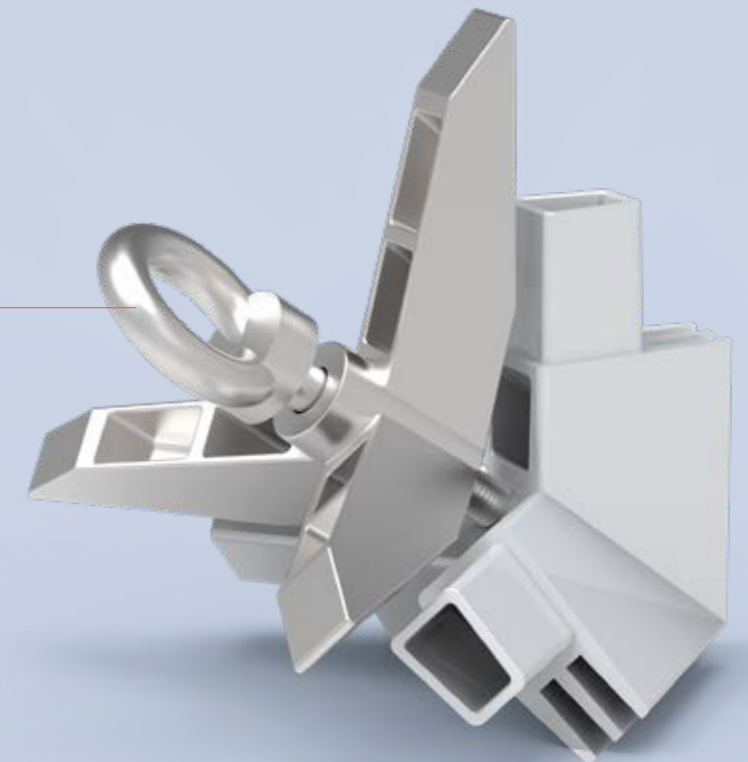
## ■ LIGHT SOURCE

360° LED light in various designs with up to 27,000 lumens.



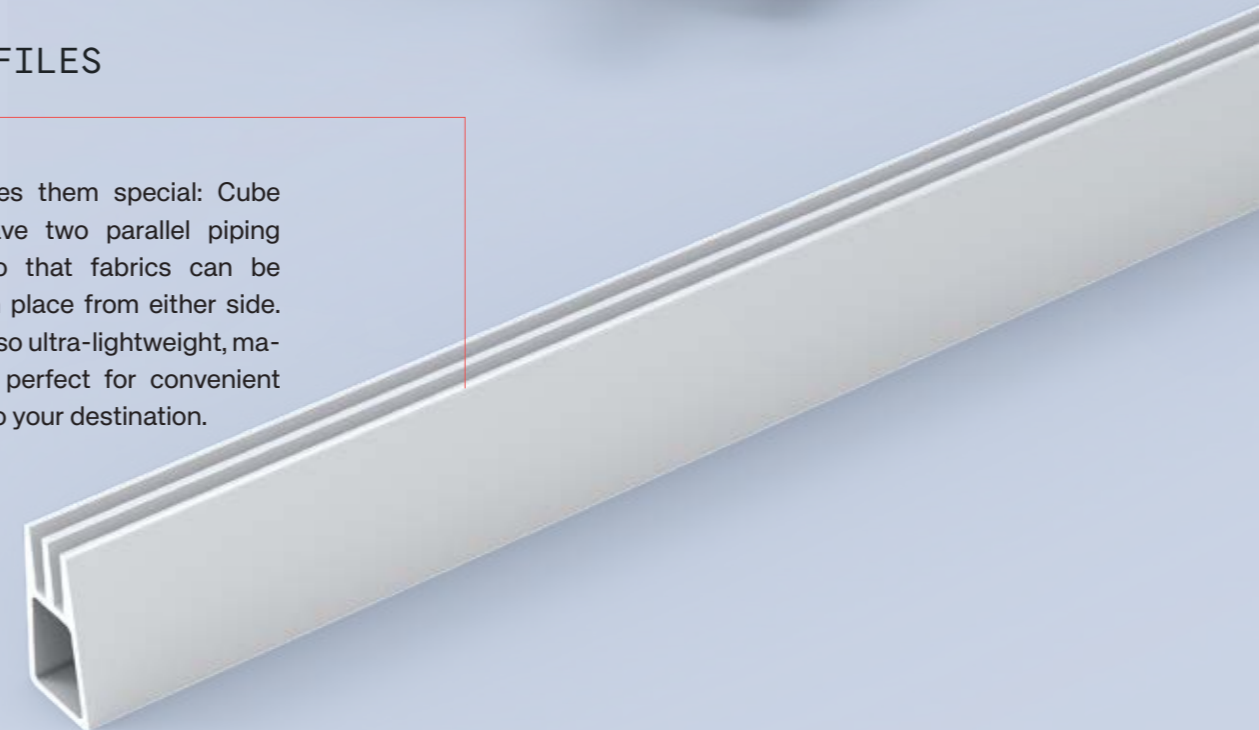
## ■ CORNER CONNECTOR

Connects three profiles at once. Installation is completely tool-free using an eye bolt.



## ■ PROFILES

What makes them special: Cube profiles have two parallel piping grooves so that fabrics can be clamped in place from either side. They are also ultra-lightweight, making them perfect for convenient transport to your destination.





# Transport Solutions



Our transport box for profiles, corners, and accessories.

Our XXL transport box for System 50 Basic and Lux ready-made frames.



## TRANSPORT

We know that safe, space-saving, and cost-efficient transport is crucial to your success. That's why our profiles and accessories are easy to handle and, thanks to our packaging and transport solutions, quick and easy to transport. This ensures that your CORNECT® systems arrive safely and reliably at every location.



1



2

### ■ TRANSPORT BAG

For safe and space-saving transport in a car.

For profiles up to 2450 mm (1)

For profiles up to 1470 mm (2)

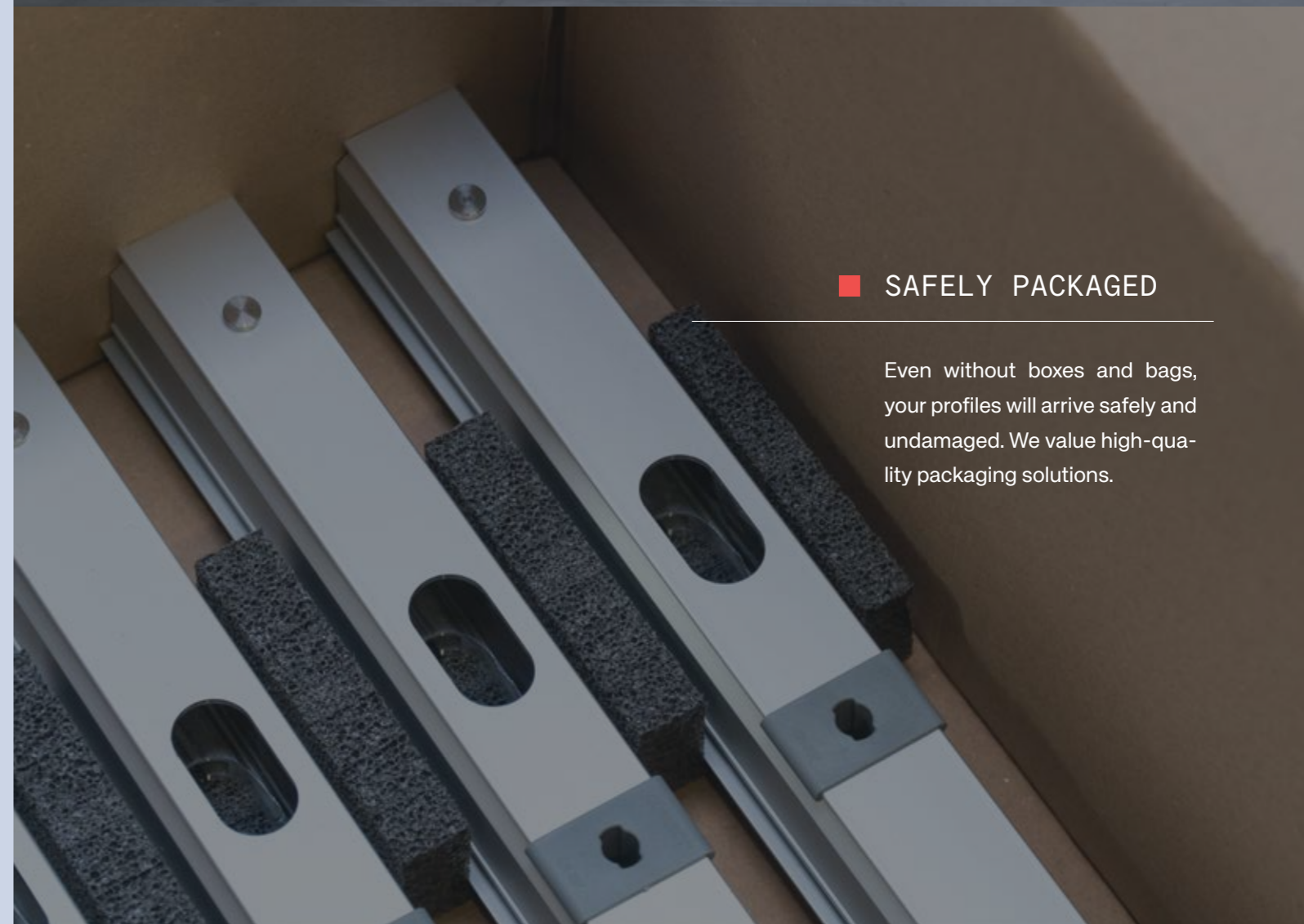
For Corner Connectors (3)

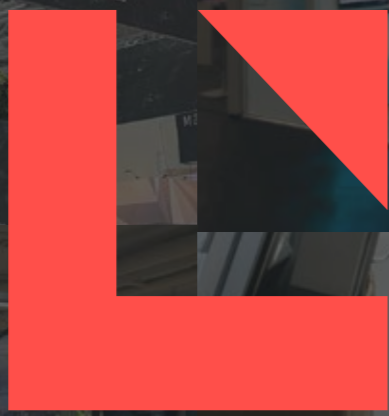
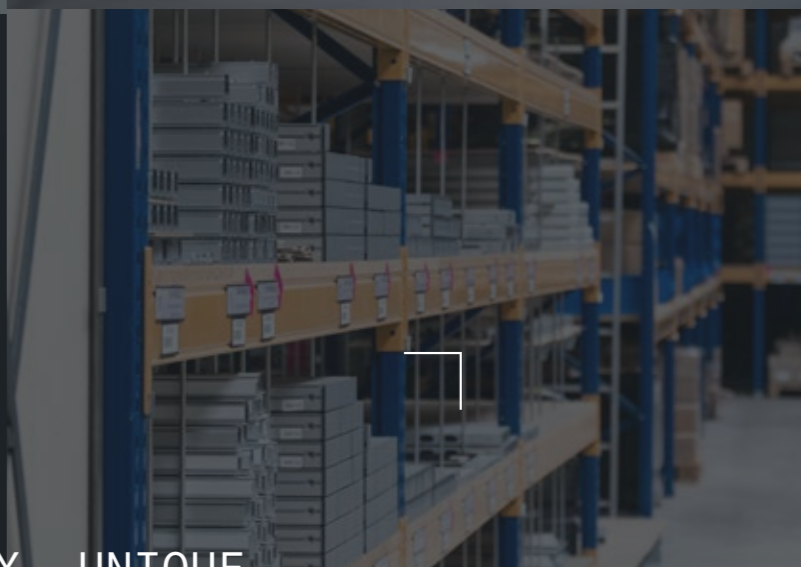
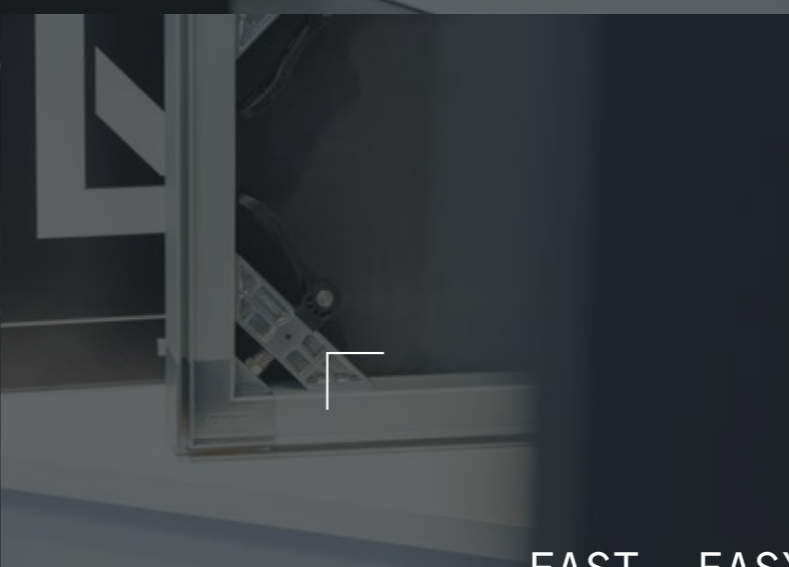
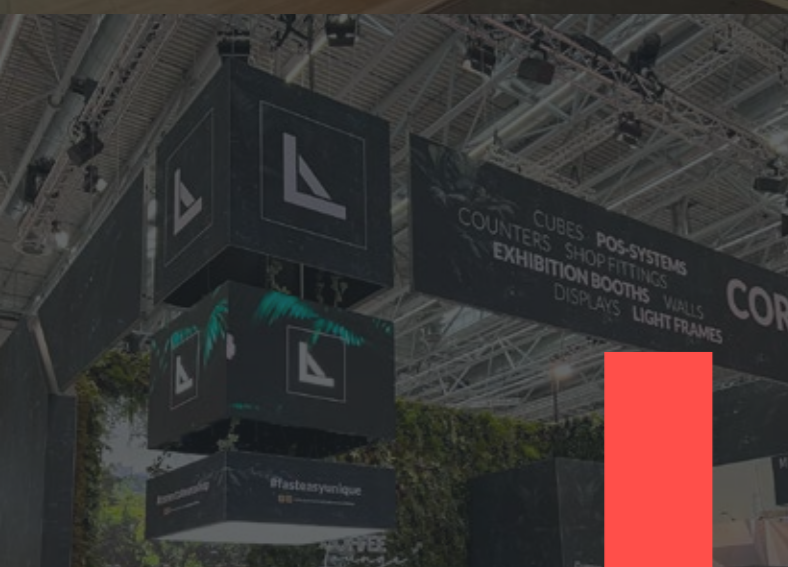


3

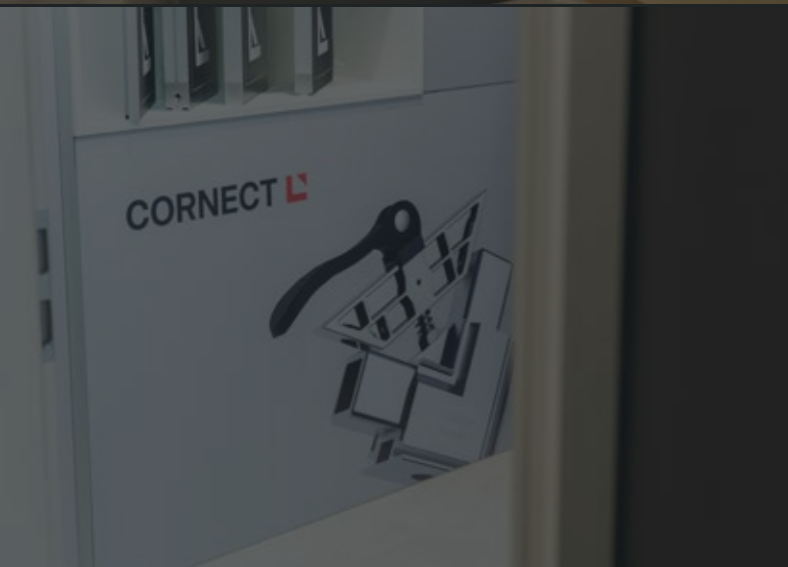
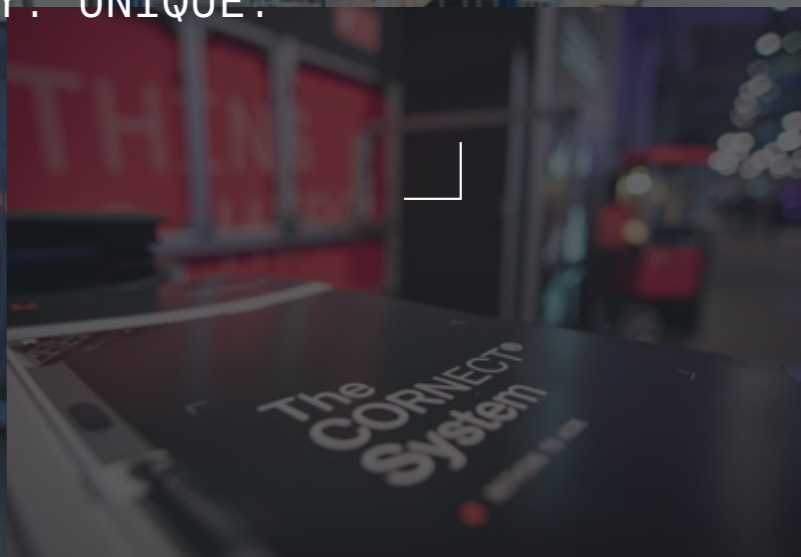
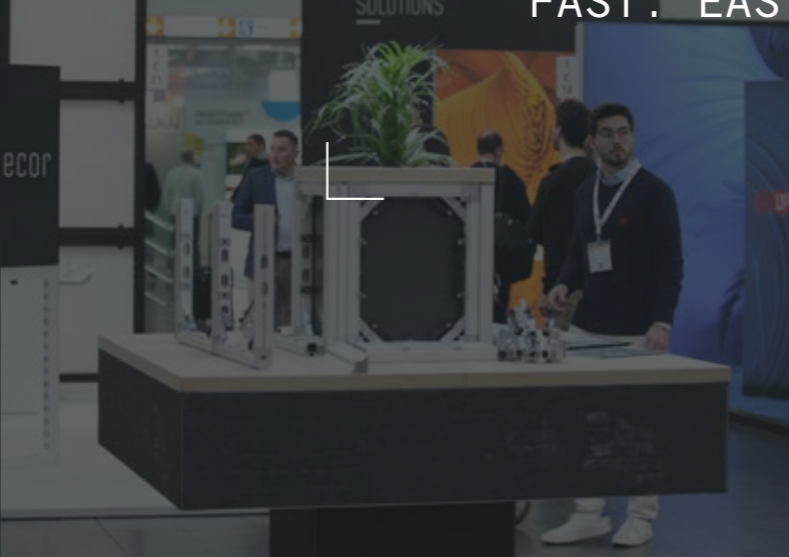
### ■ SAFELY PACKAGED

Even without boxes and bags, your profiles will arrive safely and undamaged. We value high-quality packaging solutions.





FAST. EASY. UNIQUE.



Feldmann Metall & Schmiedekunst GmbH

Business unit: CORNECT® Exhibition

Mühlsteig 25 | 90579 Langenzenn

Phone +49 9101 4977-700

Fax +49 9101 4977-710

Mail [info@connect-exhibition.com](mailto:info@connect-exhibition.com)

Errors and misprints excepted.

The terms and conditions of Feldmann GmbH apply, which can be viewed at [www.connect-exhibition.com](http://www.connect-exhibition.com)

Print date: 10.11.2025 | Item number: CR-IM25-D

**CORNECT** 