



CONSTRUCTIONARIUM
AUSTRALIA



Celebrating 1000 participants at
Constructionarium Australia's 55th build.

Constructionarium Australia 2026 Build Program

Constructionarium Australia empowers the next generation of infrastructure, engineering and construction professionals to build real-world skills and networks through hands-on projects, underpinned by an award-winning commitment to diversity, equity and inclusion.





About Constructionarium Australia

Delivered across Brisbane and Melbourne, Constructionarium Australia is an intensive eight-day training and development program where participants work in multidisciplinary teams to plan, tender, build and hand over a scale replica of an iconic Australian structure.

Established as a not-for-profit organisation in July 2016, Constructionarium Australia is based on a proven international model that has operated successfully in the UK for more than a decade. The Australian program is tailored to the local industry, safety standards and project environments, with a recognised, award winning commitment to diversity, equity and inclusion.

Since inception, Constructionarium Australia has supported over 1,000 participants, providing a safe, hands-on environment for emerging engineers and built-environment professionals to develop real-world project experience. The program focuses on strengthening team collaboration, problem-solving, leadership capability and practical construction skills, bridging the gap between theory and practice

In recognition of its impact on industry capability building and gender equity, Constructionarium Australia has twice won NAWIC QLD Corrs Chambers Diversity Award in 2021 and 2023 Diversity Awards and in 2025 was the recipient of the National Association of Women in Construction (NAWIC) ADCO Crystal Vision award, highlighting the program's contribution to inclusive, industry-led learning and the development of future leaders.

Constructionarium Australia offers a unique, industry-led learning experience and an exceptional opportunity for early-career professionals to build confidence, capability and networks through live project delivery.

Proposed 2026 Build Program

Brisbane Build Program

15 April to 24 April
27 May to 5 June
29 July to 7 August*
23 September to 2 October
4 November to 13 November*

Melbourne Build Program

10 June to 24 June
24 June to 3 July – All Female Build
15 July to 24 July*
19 August to 28 August* (Pumped Hydro)
7 October to 16 October*
21 October to 30 October*
11 November to 20 November*
25 November to 4 December*

* Dates to be confirmed

Programs and themes

Constructionarium Australia exists to help the next generation of infrastructure, engineering and construction professionals to gain skills and build networks by working on a real project. Our core themes are:

Theory

Each build includes training on the latest construction theory from industry experts and includes Lean Methodologies, BIM and Digital Engineering, Design Principles and Project Controls.

Networks

A core part of Constructionarium Australia is our network. Participants build strong industry connections through Lunch & Learn sessions with industry leaders, networking events during each build, and ongoing alumni events that keep our community connected beyond the program.

Practical training

Each project includes a real build of an iconic structure such as the Story Bridge and includes a tender, planning phase, construction phase, safety management and more.

Outcomes

As a result of participation each member of the cohort will have been exposed to the key project, management, technical and interpersonal skills that are the core requirements of the modern infrastructure professional. They are also part of the Constructionarium alumni – leaders of the future.

Participants will benefit from being part of a hands-on, real construction project that incorporates the full project lifecycle including incorporating BIM in design and construction under formal execution by a licensed contractor and supported by a formal design by a licensed engineering firm.



Participants

Participants for each build are drawn from the whole of the construction supply chain and is intended to fast track the skills and experience of final year university students, post-graduate students and early-stage career professionals.

Participants are predominantly Engineers (mainly civil, also mechanical, chemical or process) or Construction Professionals (quality, safety, environmental, logistics, stakeholder, finance, legal).

Most participants are early-stage career professionals, male and female mixed cohorts except on designated all-female builds.

Program fees

Participation is limited to 20–25 participants per build, typically composed of

- Paid Participants (Brisbane)
 - ♦ 5 Students (Free)
 - ♦ \$5,000 +GST Industry Professionals
 - ♦ \$3,200 +GST QMCA Member Industry Professionals
- Paid Participants (Melbourne)
 - ♦ \$5,000 +GST Industry Professionals
 - ♦ \$3,500 +GST Big Build professionals (Bridge, Rail)

We actively encourage a diverse cohort for each build as participants learn from working collaboratively with people from different sectors, disciplines and levels of experience.

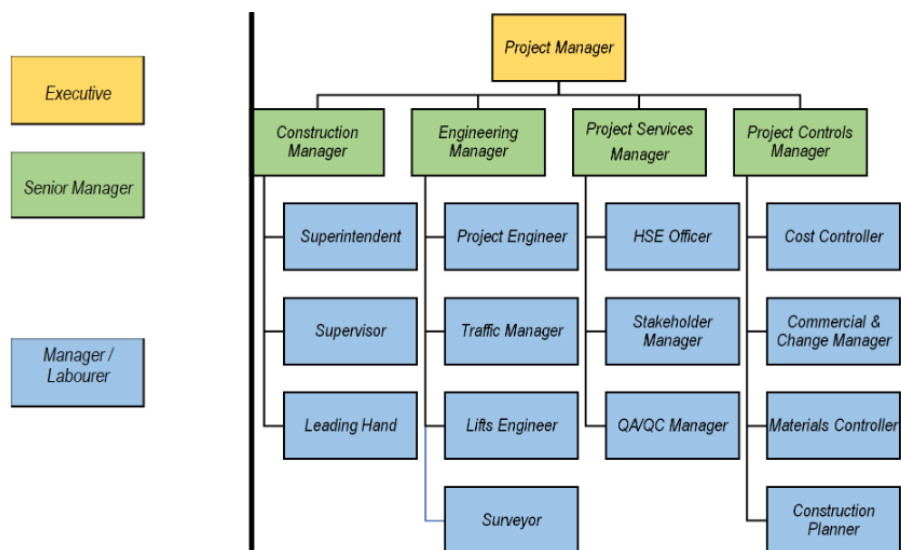


Typical program

At the heart of Constructionarium Australia are the following principles which guide the development of a build program.

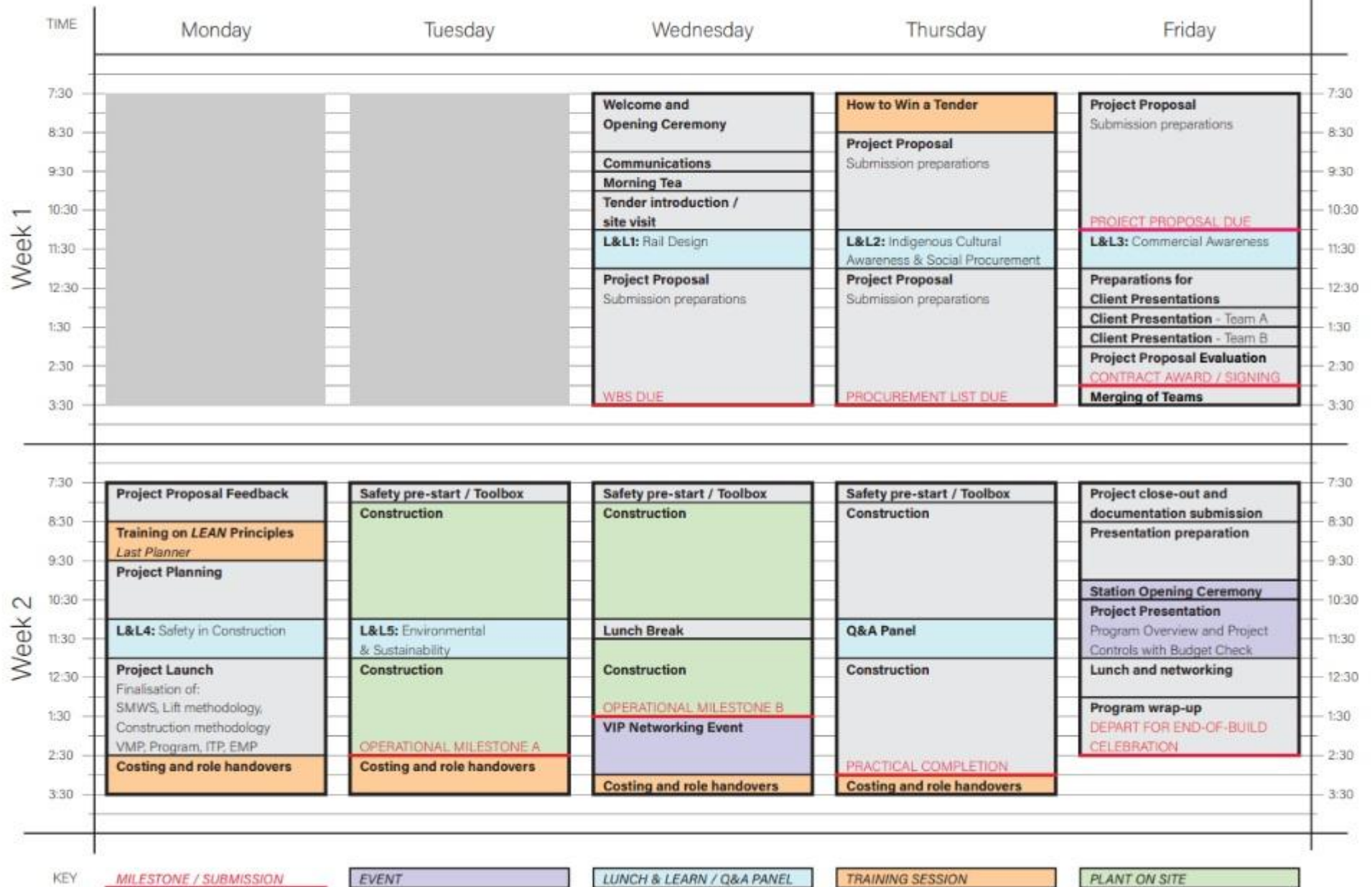
- Constructionarium Strategy
- Train graduates and students in Project Management
- Creating Alumni opportunities to meet peers
- Networking opportunities with Industry

A typical program across 8 days is intended to cover theory and practical elements and contains learning sessions, keynote speaking spots, workshops and construction days.

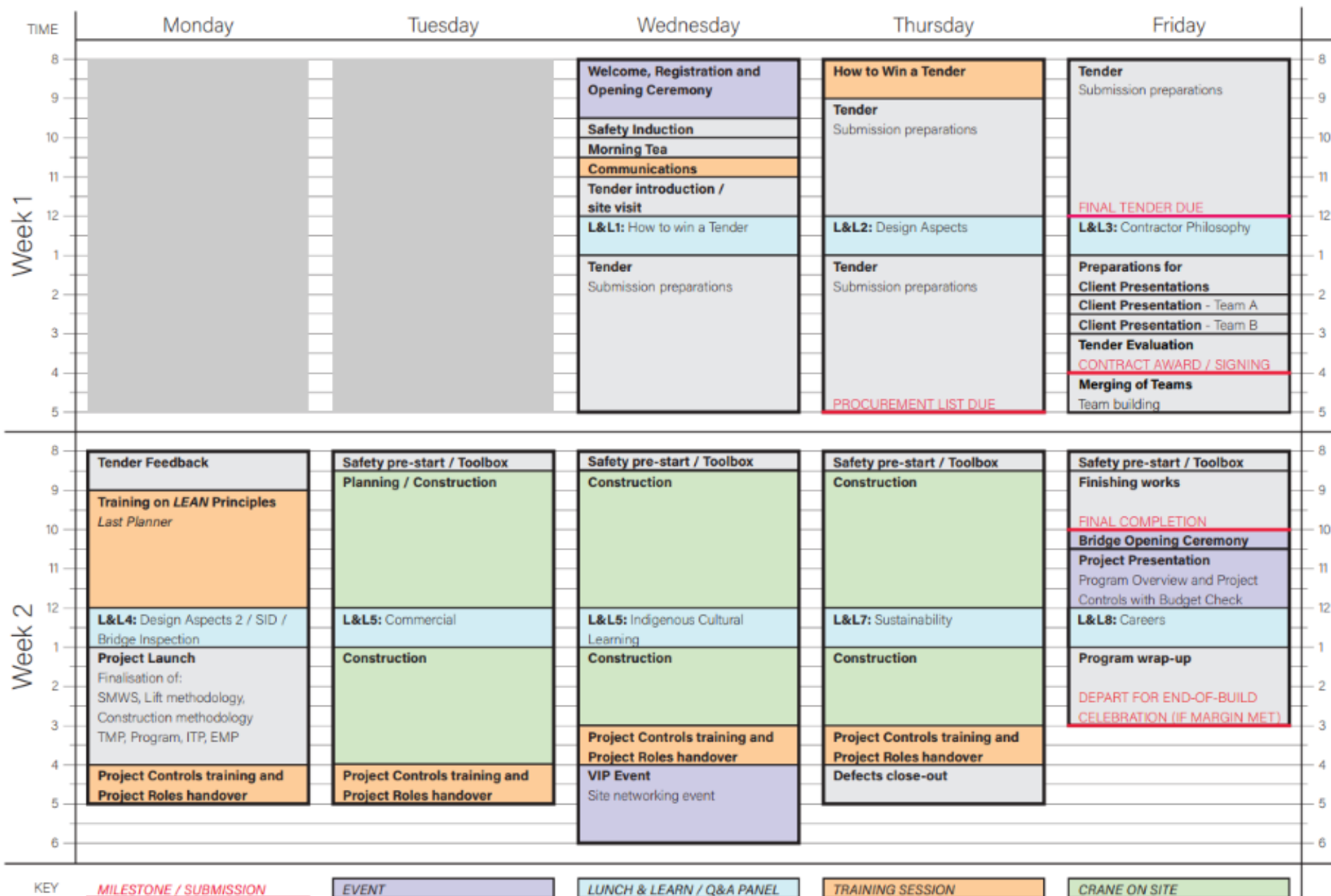


The following pages show examples of different build programs.

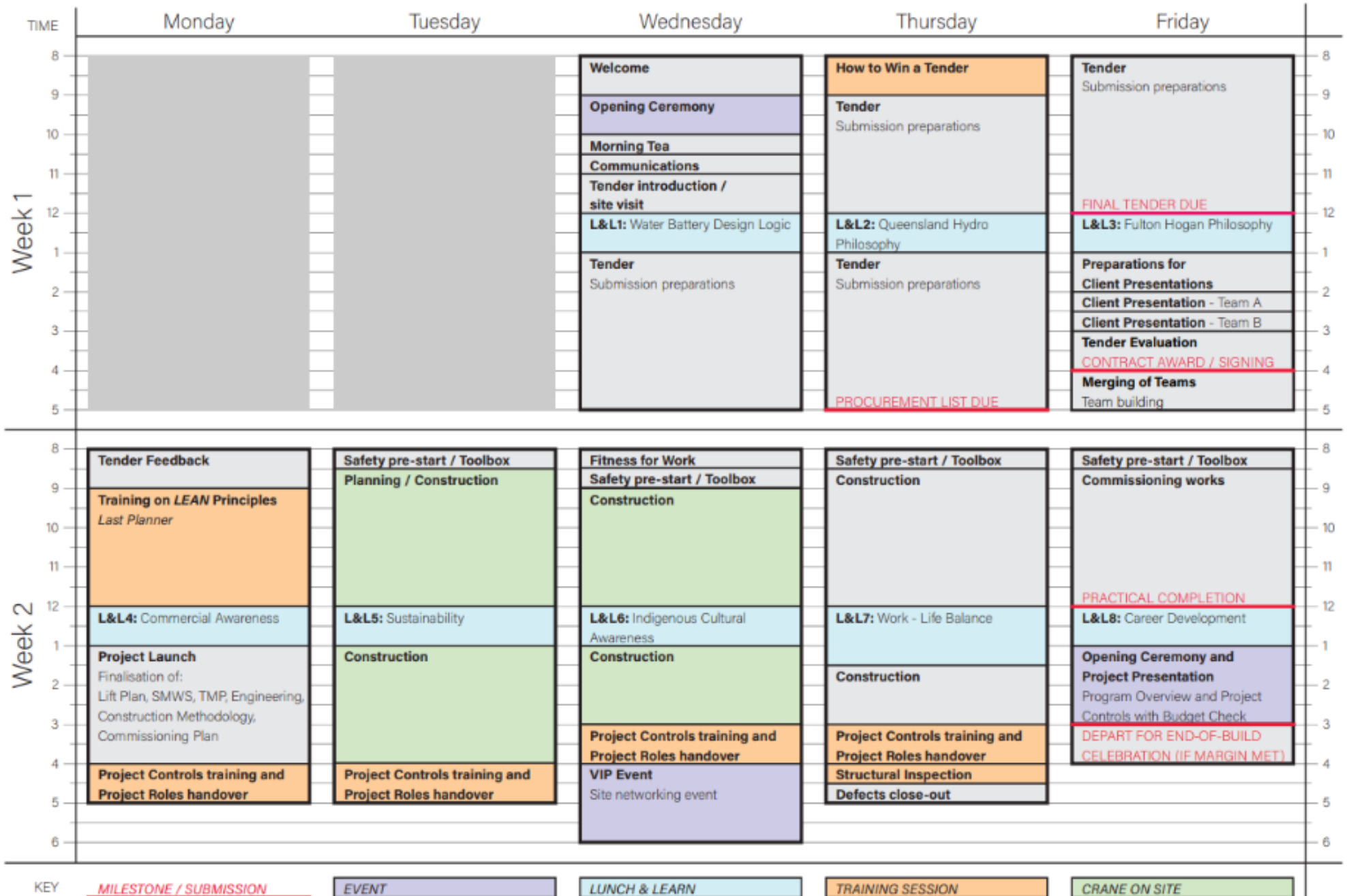
CONSTRUCTIONARIUM AUSTRALIA - VICTORIA RAIL PROGRAM



CONSTRUCTIONARIUM AUSTRALIA - BRISBANE BUILD - PROGRAM



CONSTRUCTIONARIUM AUSTRALIA - WATER BATTERY BUILD - PROGRAM



KEY MILESTONE / SUBMISSION EVENT LUNCH & LEARN TRAINING SESSION CRANE ON SITE



Skills and learnings

Participants and support staff can claim CPD credit from Engineers Australia. Activities and skills development will focus on:

Fundamental content technical / costing

- Tender development
- Presentation
- Pricing
- Technical
- Commissioning
- Specifications and Documentation
- Program of Works and Scheduling
- Client Expectations and Management

Engineering

- BIM
- Safety In Design
- Whole Of Life
- Limit State Design
- Design Aspects
- Check Before and After Construction
- Temporary Works
- Crane Lifts
- Dial Before You Dig
- Lean Training
- Safety
- CR
- Project Controls
- Daily Reporting
- Receipt Of Goods
- Planning
- Cost (Budget Management)
- Change Management
- Commercial Management
- Client handover

Our build structures

Our structures reflect different industry and contractual approaches as well as different learning outcomes.



Brisbane structures



Story Bridge



Eleanor Schonell Bridge



Pumped Hydro (Water Battery)



CSQ Construct Her Future
(Year 11 Females)



Melbourne structures



Big Bridge Build



Big Rail Station



Pumped Hydro (Water Battery)

Our supporters

Without the support of our partners in the construction and infrastructure industry, Constructionarium Australia simply could not undertake the programs we do.

Foundation Partners



Queensland Program Partners



Victorian Program Partners



Story Bridge Partners



Eleanor Schonell Bridge Partners



Big Build Partners



Water Battery Partners



Queensland Build Partners



Victoria Build Partners



Supporters





CONSTRUCTIONARIUM
AUSTRALIA

