



# COOLER THAN THE OTHER GUYS.

## COLD STORAGE. BUILT RIGHT.

Insulated panels · Walk-in coolers & freezers · Reach-in glass doors · Hygienic PVC coving · Refrigeration trailers · Commercial refrigeration

### WHO WE SERVE

---

C-Stores, Grocery Chains,  
Restaurants & Distributors

### OUR SPECIALTY

---

Cold Chain, Insulation  
& Hygienic PVC Systems

### REACH

---

Stocked in Texas — Shipped  
& Installed Nationwide

### OUR PRODUCT LINES

- Insulated Metal Panels
- Walk-In Coolers & Freezers
- Reach-In Glass Doors
- CoRound PVC Coving
- Refrigeration Trailers
- Commercial Refrigeration

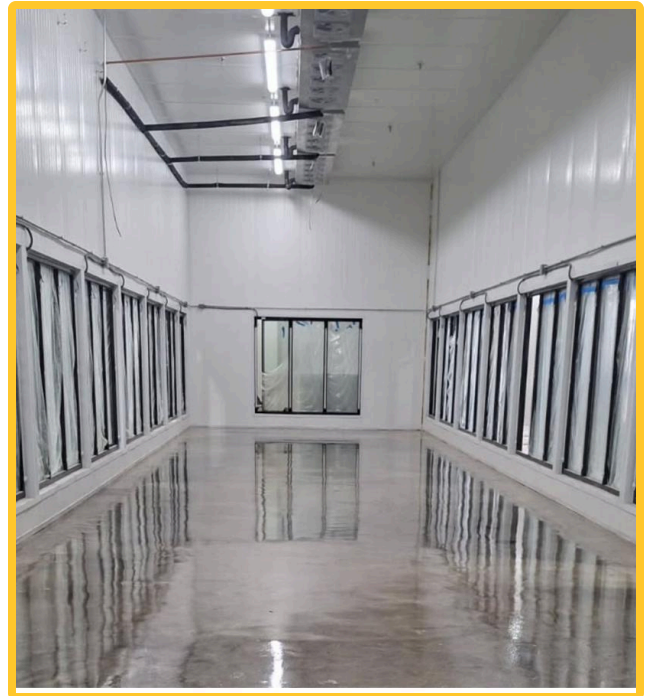
**WHO WE ARE**

# COLD STORAGE. BUILT RIGHT.

PanelTX is a Texas-based cold storage solutions provider specializing in the supply and installation of insulated metal panel systems, commercial doors, refrigeration equipment, and hygienic interior finishing products.

From single-location c-stores and regional grocery chains to restaurant groups, food distributors, and warehouse-scale operators, we deliver engineered products that meet the most demanding cold chain standards.

Headquartered in Aledo, TX, our team operates across the Texas Triangle and surrounding states — delivering fast lead times, expert installation, and complete project support from first spec through final inspection.



**"Cooler than the other guys."**

## WHO WE SERVE

### C-STORES & GAS STATIONS

Reach-in doors, walk-in coolers, and panels that keep convenience inventory cold and camera-ready.

### GROCERY & WAREHOUSE

Large-format retailers and distribution centers rely on PanelTX for industrial-scale cold rooms and display cases.

### RESTAURANTS & FOOD SERVICE

Quick-service to full-service — walk-in solutions built to hit food safety and volume targets every shift.

### FOOD DISTRIBUTION

Refrigeration trailers and panel systems keep temperature-sensitive cargo safe from warehouse to final delivery.

## OUR COMMITMENT

- NSF · FDA · USDA · cGMP compliant product lines
- Energy-efficient, ENERGY STAR certified units
- Stocked in Aledo, TX — fast lead times
- HACCP-friendly hygienic installation systems
- Nationwide delivery & installation support
- Turnkey install — one partner, one result

**COMPLETE COLD STORAGE SYSTEM**

# OUR PRODUCTS & SERVICES.

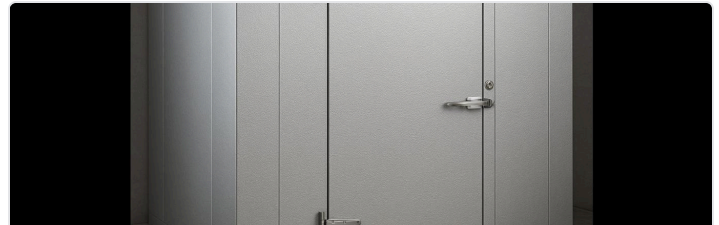
Six engineered product lines. One expert team. Every component your cold chain project needs — sourced, delivered, and installed by PanelTX.



**01**

### INSULATED METAL PANELS

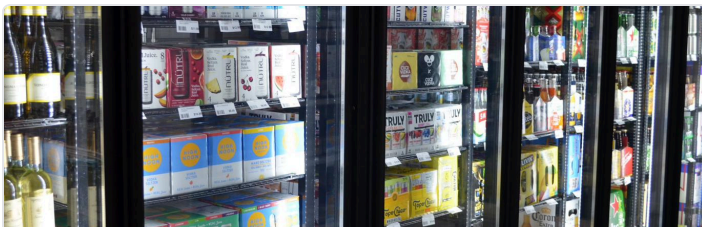
High-R foam-core panels and acoustic systems for cold storage envelopes, interior partitions, and sound-sensitive commercial buildings.



**02**

### WALK-IN COOLERS & FREEZERS

Custom-engineered, fully modular cold storage sized to your exact footprint, temperature zone, and refrigeration specification.



**03**

### REACH-IN GLASS DOORS

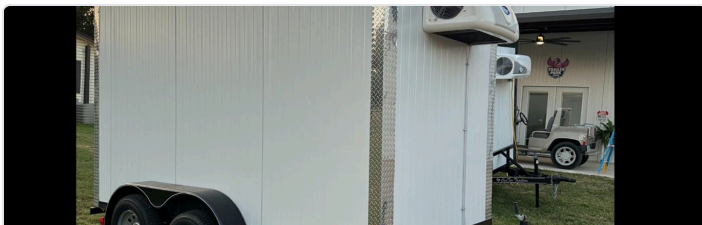
Crystal-clear merchandising doors with full-height LED illumination — built to drive impulse sales in beer caves, beverage walls, and grab-and-go.



**04**

### COROUND PVC COVING

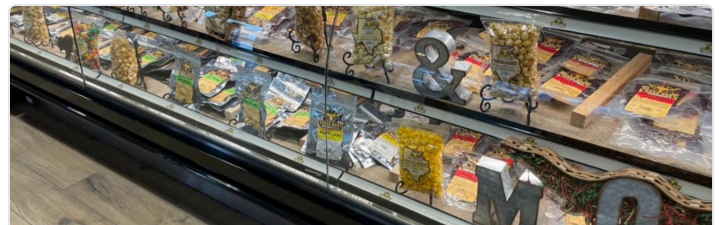
Sealant-free hygienic cove profiles that pass health inspection on day one — zero harborage points, zero silicone, zero re-inspection risk.



**05**

### REFRIGERATION TRAILERS

Emergency cold storage backup and mobile refrigeration for restaurants, meat processors, florists, festivals, and event operators.



**06**

### COMMERCIAL REFRIGERATION

Display cases, condensing units, compressor racks, and complete refrigeration systems for retail, grocery, and food service environments.

PRODUCT LINE 01

# INSULATED METAL PANELS.

*Fire-rated, code-ready insulated panels engineered for cold rooms, refrigerated buildings, and sound-sensitive commercial environments.*



HIGH-R CORE

FIRE RATED

SOUND BARRIER

CUSTOM SIZING

When the cold can't get out and the heat can't get in, **your margins stay healthy**. PanelTX insulated metal panels deliver maximum thermal performance, structural integrity, and acoustic control — whether you're building a freezer vault, a cold storage warehouse, or a noise-sensitive commercial envelope.



## WHY OPERATORS PICK US

- ▶ **Maximum R-value per inch** — refrigeration-grade foam core means lower energy bills, month after month.
- ▶ **Fire-rated & code-ready** — fully accepted under IBC 2021 for refrigerated warehouses. No surprises at inspection.
- ▶ **Sound-barrier variants** — mineral wool core options for noise-sensitive retail, industrial, and oilfield installs.
- ▶ **Concealed-fastener joinery** — tongue-and-groove system delivers a clean interior finish and a tight vapor seal.
- ▶ **Custom widths & lengths** — standard or fully custom to match your exact footprint and building system.
- ▶ **Fire, moisture & impact resistant** — built for the real world of pallet jacks, washdowns, and high traffic.

## IDEAL FOR

- Refrigerated warehouses & cold storage
- C-store envelopes & interior partitions
- Food processing facility walls & ceilings
- Acoustic partitions & sound barriers

## READY TO SPEC?

Our team sizes, sources, and delivers panel systems to your exact project.

[paneltx.com](http://paneltx.com) · [info@paneltx.com](mailto:info@paneltx.com)

PRODUCT LINE 02

# WALK-IN COOLERS & FREEZERS.

Custom-built cold storage sized to any footprint. Engineered for c-stores, grocers, restaurants, and distribution operations.



NSF CERTIFIED

CUSTOM SIZE

TURNKEY PACKAGE

FREEZER + COOLER

One partner. One team. A complete walk-in cold room — designed, delivered, and installed to your exact footprint and temperature zone. **From small produce coolers to warehouse-scale freezer vaults.**

## WHY OPERATORS PICK US

- ▶ **Cooler or freezer, any temp** — configurations from deep freeze to walk-in refrigeration. We spec the right system for your load.
- ▶ **Cam-lock modular construction** — fast assembly, tight seals, and easy future expansion when your operation grows.
- ▶ **Full refrigeration packages** — self-contained or remote condensing unit options bundled into a single quote.
- ▶ **NSF-certified interiors** — food-safe white embossed steel that passes health inspection from day one.
- ▶ **Anti-sweat door frames** — heated frames eliminate condensation issues in high-humidity c-store and grocery environments.
- ▶ **Turnkey installation** — our crews handle delivery, layout, and install. Minimum downtime for your operation.



## IDEAL FOR

- C-store back-of-house coolers & freezers
- Restaurant walk-in storage & prep areas
- Grocery chain storage & produce rooms
- Food distribution staging & holding

## READY TO BUILD YOUR NEXT COOLER?

Custom sized. Code-ready. Installed by PanelTX.  
**866-MR-PANEL**

PRODUCT LINE 03

# REACH-IN GLASS DOORS.

*High-visibility merchandising doors that turn refrigeration into a revenue driver — for beer caves, beverage walls, and grab-and-go.*



CRYSTAL-CLEAR GLASS

HEATED FRAME

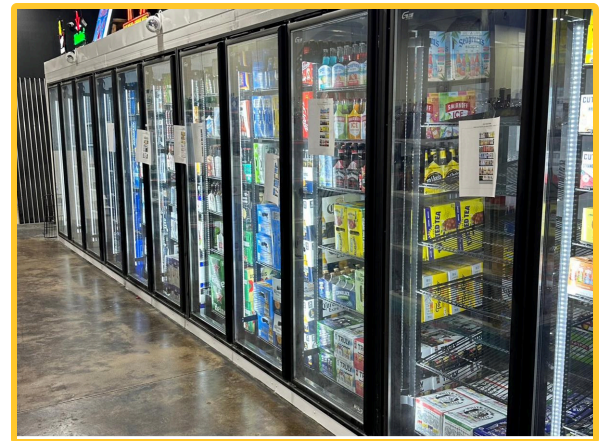
FULL-HEIGHT LED

ENERGY STAR

Glass doors aren't just doors — they're merchandising. PanelTX reach-ins combine insulated glazing with **full-height LED lighting** so every beer, every bottle, every grab-and-go SKU pops on the shelf and sells itself.

## WHY OPERATORS PICK US

- ▶ **Crystal-clear product visibility** — insulated tempered glass with anti-fog and anti-condensation coatings.
- ▶ **Full-height LED lighting** — bright, even illumination from top shelf to bottom. Products sell themselves.
- ▶ **Heated frames** — eliminate sweating and condensation in any ambient condition. No puddles, no wiping, no complaints.
- ▶ **Flexible mounting** — left or right hinge, single or full-wall arrays, any footprint.
- ▶ **Energy-efficient by design** — ENERGY STAR-ready construction means lower utility bills year after year.
- ▶ **Commercial-grade hardware** — self-closing hinges and heavy-duty handles built for high-traffic retail abuse.



## IDEAL FOR

- C-store beer caves & beverage walls
- Grocery dairy, deli & produce cases
- Liquor stores & specialty retail
- Restaurant grab-and-go displays
- Convenience chain rollouts & remodels

## READY TO BUILD YOUR BEVERAGE WALL?

Single doors or full-wall arrays. We spec and install both.

[info@paneltx.com](mailto:info@paneltx.com)

PRODUCT LINE 04

# COROUND PVC COVING.

*Sealant-free hygienic cove profiles engineered for food-safe environments. Zero silicone. Zero harborage points. Zero re-inspection risk.*

FDA / USDA

SEALANT-FREE

HACCP

CGMP

The wall-floor junction is the #1 source of bacteria in food environments — and the #1 reason facilities fail inspection.

**CoRound ends that problem.** A sealant-free hygienic PVC coving system that adapts to any surface and passes inspection from day one.

## WHY OPERATORS PICK US

- ▶ **Zero harborage points** — eliminates the floor-wall junction where bacteria accumulate. No silicone gaps ever.
- ▶ **Inspection-ready from day one** — fully FDA, USDA, CFIA, cGMP, and HACCP compliant. No prep, no remediation.
- ▶ **Flexible lip seals** — adapt to uneven or irregular surfaces for a hermetic seal without caulk or sealant.
- ▶ **Chemical & humidity resistant** — resists detergents, extreme humidity, and chemical agents.
- ▶ **Cold storage rated** — performs from freezer temps to commercial kitchen heat. One product, every application.
- ▶ **Fast mechanical install** — no cure time, no silicone to replace. Compatible with new build or retrofit.



## IDEAL FOR

- Food processing floor-to-wall transitions
- Walk-in cooler & freezer cove base
- Commercial kitchens & prep rooms
- Cold storage compliance upgrades
- Grocery walk-ins & back-of-house

## PASS INSPECTION. PERIOD.

Long-warranty hygienic coving — ask about project sizing.

**866-677-2635**

PRODUCT LINE 05

# REFRIGERATION TRAILERS.

*Emergency cold storage backup and mobile refrigeration on-demand — when your walk-in goes down, when the event is off-grid, when the load needs to stay cold.*



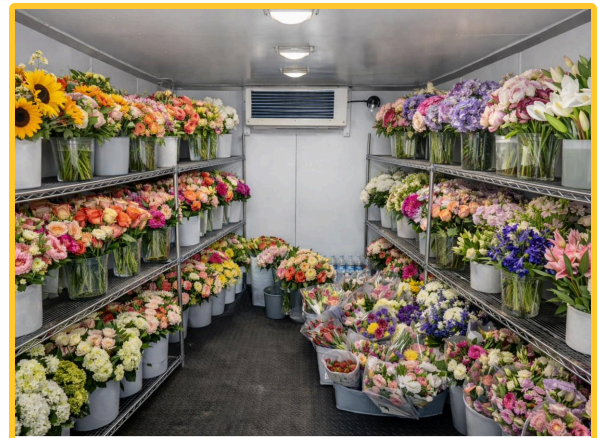
EMERGENCY BACKUP

MOBILE EVENTS

MEAT-HANGING READY

TURNKEY

When the freezer fails at 2 a.m. or the festival doesn't have hookups, you don't have time to shop around. PanelTX refrigeration trailers **show up cold and ready to work** — for restaurants in a breakdown, processors hanging meat, florists prepping a wedding, and event operators running off-grid.



## REAL-WORLD USE CASES

- ▶ **Emergency cold storage backup** — when a restaurant freezer or grocery walk-in goes down, get product cold fast and avoid spoilage losses.
- ▶ **Mobile refrigeration for events & festivals** — concerts, food festivals, weddings, and pop-ups where shore power and walk-ins don't exist.
- ▶ **Meat processors & butchers** — interior load rails ready for hanging carcasses, halves, and quarters during peak processing.
- ▶ **Florists & wedding transport** — keep arrangements crisp from cooler to ceremony, even on long-distance event runs.
- ▶ **Restaurants in a pinch** — drop a trailer in the back lot when the walk-in fails, keep service running, no menu changes required.
- ▶ **Catering & food trucks scaling up** — extra capacity for big jobs without committing to permanent cold storage.

## WHO RENTS & BUYS THESE

- Restaurants & commercial kitchens
- Meat processors & butcher shops
- Florists & wedding planners
- Event operators, festivals & venues
- Grocery, c-store & warehouse backup
- Caterers & mobile food operators

## FREEZER DOWN? EVENT TOMORROW?

Call PanelTX — we get cold storage where you need it.

**682-402-4080**

PRODUCT LINE 06

# COMMERCIAL REFRIGERATION.

Complete refrigeration systems for retail grocery and food service — display cases, condensing units, compressor racks, and full system design.

ENERGY STAR

SMART CONTROLS

FULL SYSTEM

ETL LISTED

One partner for the entire refrigeration stack. PanelTX covers **every piece of the retail cold chain** — from the open merchandiser on the sales floor to the compressor rack on the roof. Spec'd, installed, and serviced by one team.

## WHY OPERATORS PICK US

- ▶ **Every case type** — open multideck, closed display, island, and coffin cases for every merchandising strategy.
- ▶ **Medium & low temp** — from produce to deep freeze, one source for every temperature zone in your store.
- ▶ **Smart controls & remote monitoring** — catch problems before they cost you product. Lower shrink, lower service calls.
- ▶ **Condensing & compressor rack options** — self-contained for small footprints, remote racks for large-scale retail installs.
- ▶ **Energy-efficient EC fan motors** — standard across the lineup. ENERGY STAR-ready units available throughout.
- ▶ **Nationwide installation & service** — full commissioning and ongoing support on every system we deliver.



## IDEAL FOR

- C-store grab-and-go & beverage displays
- Grocery produce, dairy & frozen aisles
- Restaurant prep & customer-facing displays
- Ethnic grocery & specialty retail
- New builds & remodels, any format

## ONE PARTNER, EVERY CASE.

Full-system design, supply, install, and service.

[info@paneltx.com](mailto:info@paneltx.com)

**WHY CHOOSE US**

# COOLER THAN THE OTHER GUYS.

One source. One team. Every cold storage component your project needs — delivered fast, installed right, and backed by dedicated technical support.

**01 SINGLE-SOURCE SUPPLIER**  
Panels, coolers, reach-ins, trailers, PVC coving, and commercial refrigeration — all sourced, supplied, and supported by one expert team. No coordination gaps.

**02 INDUSTRY-SPECIFIC EXPERTISE**  
We understand c-store operations, grocery chain requirements, and food service demands — and build products to match every format and footprint.

**03 TEXAS-BASED — NATIONWIDE REACH**  
Stocked in Aledo, TX for fast lead times across DFW, Houston, San Antonio, and beyond. We ship and install coast-to-coast.

**04 COMPLIANCE-READY PRODUCTS**  
IBC 2021, FM Global, FDA, USDA, NSF, cGMP, and HACCP-compliant solutions for every food-safe and regulated environment. No surprises at inspection.

**05 TURNKEY INSTALLATION**  
Our crews manage delivery, layout, and complete installation — minimizing downtime and handing over a finished, code-ready system.

**06 DEDICATED TECHNICAL SUPPORT**  
Product selection, spec sheets, and on-site technical assistance for any scale project. Real people, fast answers, from first quote to commissioning.

**"COOLER THAN THE OTHER GUYS."**  
COLD STORAGE. BUILT RIGHT. — SERVING THE TEXAS TRIANGLE & BEYOND

READY TO BUILD YOUR NEXT COOLER?

# LET'S GET YOUR PROJECT **STARTED.**

Our team is ready to help you spec, size, and install your cold storage system. Reach out for a quote, a product question, or to schedule an on-site consultation.

TOLL FREE

**1-866-MR-PANEL**

1-866-677-2635

DIRECT LINE

**682-402-4080**

Operations — Aledo, TX

EMAIL

**info@paneltx.com**

General inquiries, quotes & project support

WEBSITE

**paneltx.com**

Full product catalog & resources

MAIN OFFICE

**1314 Apryl Dr**

Aledo, TX 76008

BRANCH LOCATION

**210 S. 6th St**

Godley, TX 76044

**"COOLER THAN THE OTHER GUYS."**

Cold Storage. Built Right. · Serving DFW · Houston · San Antonio & Beyond

**866-MR-PANEL**  
**paneltx.com**