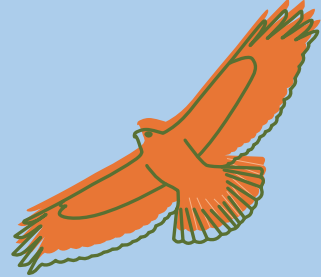




# Elephant Hill Nature Guide



## Welcome to Elephant Hill!

**Elephant Hill is a beloved hillside open space located in El Sereno.** Its steep slopes offer impressive views and are home to native black walnut, oak, and elderberry trees and a rich variety of wildlife—rabbits, coyotes, bobcats, reptiles, and many species of birds including owls and hawks. During rainy seasons, a natural spring resurfaces at the base of the hill near the western entrance to Elephant Hill. The Test Plot project, a thriving native plant garden built by the community, is located at the eastern gate and demonstrates the restoration potential of Elephant Hill.

Since time immemorial, the Tongva, Kizh, and Tataviam peoples have cared for these lands using cultural practices of fire, cultivation, tending, and pruning. European colonization impeded these practices and Spanish, Mexican, and American settlers brought in sheep and cattle grazing. This altered the landscape by introducing many non-native and invasive species, including eucalyptus and mustard, reducing native habitat.



Until recently, real estate developers were not eager or incentivized to invest in El Sereno, a once ‘redlined,’ now predominately Latino community. For similar reasons, Northeast LA hillside open spaces were overlooked for land preservation.

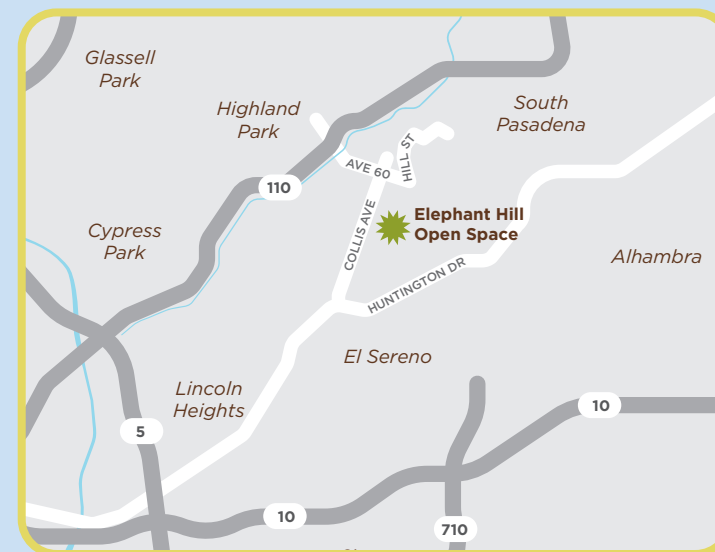
Elephant Hill—also known as “The Heavens”—now faces urban development pressures as well as unauthorized off-roading, which leads to:

- *Degraded hillside habitat*
- *Destruction of wildlife, native trees and plants*
- *Risk of brush fires and flooding*

Through a grant from the Off Highway Motor Vehicle Recreation Division of California State Parks, the Mountains Recreation and Conservation Authority (MRCA) is working to prevent off-roading by:

- *Installing signs and other improvements such as gates and boulders to prevent unauthorized access*
- *Working with Save Elephant Hill and its partners to engage residents and other stakeholders about these issues*

The good news is that Elephant Hill remains undeveloped, and nearby residents continue to advance their longterm goals to: conserve additional land, restore the remaining historic habitat, protect wildlife, and connect people to nature.



Learn more about Elephant Hill’s natural history and conservation efforts.

- ➔ [www.SaveElephantHill.la](http://www.SaveElephantHill.la)
- 📷 @SaveElephantHill
- 📘 /saveelephanthill90032
- ✉ info@SaveElephantHill.la



Help us document who lives in Elephant Hill with iNaturalist

Thank you to the community scientists who contributed photos for this field guide.  
[www.saveelephanthill.la/natureguide](http://www.saveelephanthill.la/natureguide)



Learn more about MRCA’s mission to preserve, protect, and create open space.

- ➔ [www.mrca.ca.gov](http://www.mrca.ca.gov)
- 📷 @MRCAparks
- 📘 /LAMountains

design: placeandpage.la / translation: Carlos Hernandez  
research and content development: Natasha Khanna-Dang  
Research and program support provided by the Natural History Museum of Los Angeles County, Community Science Program.

# Elephant Hill Species

## Birds



California Scrub-jay  
*Chara Californiana*



American Kestrel  
*Cernícalo Americano*



Cooper's Hawk  
*Gavilán de Cooper*



Yellow-rumped Warbler  
*Reinita Coronada*



Nuttall's Woodpecker  
*Carpintero Californiano*



Common Raven  
*Cuervo Común*



Turkey Vulture  
*Buitre Pavo*



Lesser Goldfinch  
*Jilguero Menor*



Red-tailed Hawk  
*Aguililla Cola Roja*



Anna's Hummingbird  
*Colibrí de Cabeza Roja*



California Ground Squirrel  
*Ardilla Terrestre de California*



Eastern Fox Squirrel  
*Ardilla Zorro*

## Mammals



Bobcat  
*Gato Montés o Lince Americano*



Desert Cottontail  
*Conejo del Desierto*



Botta's Pocket Gopher  
*Tuza de Bosilla de Botta*



Coyote  
*Coyote*

## Reptiles

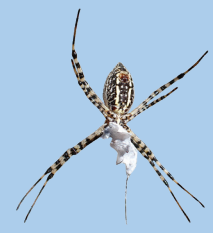


Western Fence Lizard  
*Bejori de Cerca Occidental*

San Diego Gopher Snake  
*Topera de San Diego*



Southern Alligator Lizard  
*Lagartija Lagarto Meridional*



Banded Garden Spider  
*Araña de Jardín Bandeada*

## Invertebrates



Jerusalem Cricket  
*Niño de la Tierra*



Painted Lady  
*Mariposa Vanesa Pintada*



California Trapdoor Spider  
*Araña Trampera Californiana*



Southern California Shoulderband Snail  
*Caracol de Banda del Hombro de California*



Toyon  
*Toyón*



Southern California Black Walnut  
*Nogal Negro del Sur de California*



Coffeeberry  
*Baya de Café*



Blue Elderberry  
*Sáuco Azul*



Coast Live Oak  
*Encino Verde*



Black Mustard  
*Mostaza Negra*



Tree of Heaven  
*Árbol del Cielo*



White Horehound  
*Marrubio de Monte*



Milk Snail  
*Caracol de Leche*



Castorbean  
*Higuerilla*

## Plants

## Non-natives / Invasives