



# EcoVeil 1350

## SOLAR FABRIC (5%)

### AVAILABLE COLOURS

**White  
1351**



**Silver Birch  
1369**



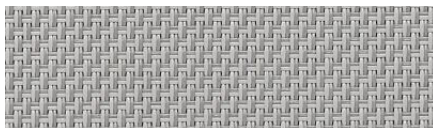
**Eggshell  
1366**



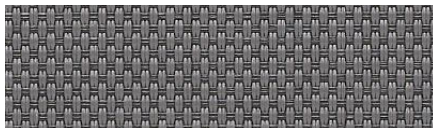
**Beige  
1352**



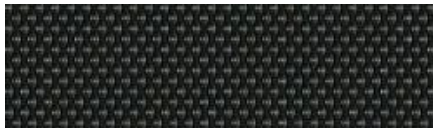
**Grey  
1363**



**Shadow  
Grey 1370**



**Black/Brown  
1354**



### FABRIC SPECIFICATIONS

<b>Stock Widths:</b>	<b>126"</b>
<b>Openness:</b>	<b>5 %</b>
<b>Composition:</b>	<b>100% Thermoplastic Olefin (TPO)</b>
<b>Thickness:</b>	<b>.034"</b>
<b>Weight:</b>	<b>12.68 oz / yd<sup>2</sup></b>
<b>Fire Rating:</b>	<b>NFPA 701 / CA US Title 19 CAN/ULC-S109</b>
<b>Cleaning Info:</b>	<b>Contact Manufacturer</b>
<b>Spline:</b>	<b>SnapLoc</b>
<b>Railroading:</b>	<b>Not Recommended</b>
<b>Acoustic Performance:</b>	<b>Negligible</b>

This technically advanced 2x2 basket-weave shade cloth is a truly eco-effective sunscreen.

As a Cradle-to-Cradle certified product, it can be reclaimed, recycled, and remain in a perpetual loop of continuous use.

If you require additional fabric samples please E-mail: [samples@frasershading.com](mailto:samples@frasershading.com)

Actual fabric colours may vary from pictures | Fabric stock levels may vary

Openness factors are approximate | Mockups are recommended

Specification subject to change without notice | ©Fraser Shading Systems 2024



# EcoVeil® 1350 Shade Cloth Properties

## 1350 Series (5% open)

Acoustic Performance | negligible      Mesh Weight | 12.68 oz/yd<sup>2</sup>      Fabric Thickness | 0.034 in

#	Name	Fabric Content	Solar Optical Properties				Single Shading Coefficient			Insulating Shading Coefficient		
			Ts	Rs	As	Tv	1/8CL	1/4CL	1/4HA	1/2CL	1CL	1HA
1351	White	100% Thermoplastic Olefin (TPO)	21	65	15	17	0.35	0.35	0.33	0.33	0.33	0.26
1369	Silver Birch	100% Thermoplastic Olefin (TPO)	14	49	37	12	0.45	0.44	0.37	0.43	0.41	0.3
1366	Eggshell	100% Thermoplastic Olefin (TPO)	15	55	30	11	0.41	0.4	0.35	0.39	0.38	0.29
1352	Beige	100% Thermoplastic Olefin (TPO)	10	49	41	7	0.44	0.43	0.37	0.42	0.4	0.3
1363	Grey	100% Thermoplastic Olefin (TPO)	6	25	69	5	0.6	0.57	0.44	0.57	0.52	0.37
1370	Shadow Grey	100% Thermoplastic Olefin (TPO)	4	5	91	4	0.73	0.69	0.5	0.69	0.62	0.42
1354	Black/Brown	100% Thermoplastic Olefin (TPO)	6	5	89	6	0.74	0.7	0.51	0.69	0.63	0.43

# CERTIFICATE OF COMPLIANCE



**Mecho**  
**EcoVeil® Shadecloth Collection**  
**I350 Series**  
**Average Openness: 5%**

101764-420  
 \_\_\_\_\_  
 Certificate Number  
 03 Jun 2009 - 28 Nov 2025  
 \_\_\_\_\_  
 Certificate Period  
 Certified  
 \_\_\_\_\_  
 Status

UL 2818 - 2022 Gold Standard for Chemical Emissions for Building Materials, Finishes and Furnishings

Window treatments are determined compliant in accordance with California Department of Public Health (CDPH) Standard Method V1.2-2017 using an Office and Classroom Environment. Product tested in accordance with UL 2821 test method to show compliance to emission limits on UL 2818. Section 7.1 and 7.2.

## GREENGUARD Gold Certification Criteria for Building Products and Interior Finishes

Criteria	CAS Number	Maximum Allowable Predicted Concentration	Units
TVOC (A)	-	0.22	mg/m <sup>3</sup>
Formaldehyde	50-00-0	9 (7.3 ppb)	µg/m <sup>3</sup>
Total Aldehydes (B)	-	0.043	ppm
4-Phenylcyclohexene	4994-16-5	6.5	µg/m <sup>3</sup>
Particle Matter less than 10 µm (C)	-	20	µg/m <sup>3</sup>
1-Methyl-2-pyrrolidinone (D)	872-50-4	160	µg/m <sup>3</sup>
Individual VOCs (E)	-	1/2 CREL or 1/100th TLV	-

- (A) Defined to be the total response of measured VOCs falling within the C6 – C16 range, with responses calibrated to a toluene surrogate. Maximum allowable predicted TVOC concentrations for GREENGUARD Gold (0.22 mg/m<sup>3</sup>) fall in the range of 0.5 mg/m<sup>3</sup> or less, as specified in CDPH Standard Method v1.2.
- (B) The sum of all measured normal aldehydes from formaldehyde through nonanal, plus benzaldehyde, individually calibrated to a compound specific standard. Heptanal through nonanal are measured via TD/GC/MS analysis and the remaining aldehydes are measured using HPLC/UV analysis.
- (C) Particle emission requirement only applicable to HVAC Duct Products with exposed surface area in air streams (a forced air test with specific test method) and for wood finishing (sanding) systems.
- (D) Based on the CA Prop 65 Maximum Allowable Dose Level for inhalation of 3,200 µg/day and an inhalation rate of 20 m<sup>3</sup>/day
- (E) Allowable levels for chemicals not listed are derived from the lower of 1/2 the California Office of Environmental Health Hazard Assessment (OEHHA) Chronic Reference Exposure Level (CREL) as required per the CDPH/EHLB/Standard Method v1.2 and BIFMA level credit 7.6.2 and 1/100th of the Threshold Limit Value (TLV) industrial work place standard (Reference: American Conference of Government Industrial Hygienists, 6500 Glenway, Building D-7, and Cincinnati, OH 45211-4438).



FRASER SHADING SYSTEMS | Unit 101 – 5219 192<sup>nd</sup> Street | Surrey, BC, Canada V3S 4P6

Off: 604-881-4881 | Fax: 604-881-4882 | [www.frasershading.com](http://www.frasershading.com) | [www.instagram.com/fraser\\_shading\\_systems](https://www.instagram.com/fraser_shading_systems)