



# KARIBU!

## WELCOME TO OUR SEVERIN SAFARI CAMP

WE WISH YOU A WONDERFUL STAY AND  
UNIQUE SAFARI EXPERIENCES!



@SEVERINSAFARICAMP

PLEASE DO NOT REMOVE THIS GUEST INFORMATION FOLDER AS OTHER GUESTS ALSO WISH TO INFORM THEMSELVES ABOUT THESE IMPORTANT FACTS. THANK YOU VERY MUCH FOR YOUR UNDERSTANDING!

# THE CAMP

The Camp officially started its operations in 2001 with 21 luxury tents and one suite till 2009 when the Spa, Gym, Conference tent, Junior suites, and one more suite were built. The Camp has a capacity of 54 beds and 10 more single beds to make a triple, making its total accommodating capacity to 64 beds.

ts fascinating location gives you a better view of Mt. Kilimanjaro and is closer to Tsavo West National Park's best natural occurrence sites like the Mzima Spring, Shetani Lava & Shetani Cave, and the Roaring Rock.

Its 5 man-made water holes surrounding the Camp and its unfenced nature make it very attractive to all kinds of wildlife which visit regularly.

Generators are the sources of electricity, together with the heat exchangers from the generators and heat pumps that give the clients a warm shower after a long tiresome safari. The water used at the Camp comes from a natural spring(Kitani Spring) a kilometer away and goes through all modes of treatment before being used. The wastewater from bathrooms and kitchen after going through a series of extractions from the treatment plant is used for gardening within the Camp.

The food services have been maximized to a top level by offering fresh fruits and vegetables from local suppliers in the nearby town which is done a couple of times a week to give our clients the best.

Our bar is equipped with different kinds of beverages from both Kenyan and international. So are the toiletries used in the bathrooms, all Kenyan own made best products.

The Camp is accessible by both air through two of the airstrips (Kilaguni & Finch Hattons), Railway (SGR), or Road driving a few kilometers from all accessibilities before arriving.

The whole Severin Safari Camp team has the profound ability and skills to make our clients have memorable experiences throughout their stay. They are determined to serve you the best because we aim to make our clients happy and feel at home.



# OUR HISTORY

Fascinated by freedom and adventure, my grandfather Rudolf bought a piece of land near Mombasa at the Indian Ocean over 50 years ago, where he opened a small hotel for his friends and himself in 1972, calling it Severin Sea Lodge. This was the cornerstone for our hotel and tourism business today.

What my grandfather once initiated and my father Severin Schulte continued to expand over 40 years, my friend Phil Sell who I met during my university studies and I are carrying on today as managing directors of Severin Touristik GmbH. Africa, and particularly Kenya, continues to inspire us. Those vast open spaces, the breathtaking wildlife, the roar of the Indian Ocean, the friendliness of the people. Together with dedicated friends, our family created two oases that reflect our deep attachment to a country that is on its way to democracy.

Instead of luxurious perfection, cool exclusivity and interchangeable anonymity, the Severin Sea Lodge and Severin Safari Camp celebrate human qualities. The success of Severin hotels is based on the work and cooperation of a close-knit team of more than 350 employees in Germany and Kenya. This sounds obvious, but it's unique, because we haven't achieved our goal until the friendliness and service orientation of our staff is not only reflected in the details, but in the eyes of our guests and customers. The Severin philosophy is marked by clear values, special emotionality and a sincere commitment



Severin Safari Camp Team

to sustainability. We apply the highest standards of ecological and socially responsible action. Our association "Skills for Kenya" supports socially vulnerable and disadvantaged young people in their professional training and further development to allow them better access to a professional life. Numerous awards and certificates are evidence of our responsible interaction with the people, the country and its nature.

Our family-run business has clearly defined its vision for the future. The history of our business will be carried on with hospitality, consistency and passion. Our goal will always remain the same: to provide you, our guests, with unique moments here at our Kitani Lodge. We wish you an unforgettable stay!

## Best regards and "Karibu"

Severin Schulte  
Director  
Severin Safari Camp

Phil Sell  
Director  
Severin Safari Camp



SKILLS FOR KENYA c.v.

# FOR YOUR INFORMATION

## Dear guests,

We shall endeavour to do our very best to ensure your stay is an unforgettable experience. Please consider our Check-In (noon) and Check-Out times (10:00 am). Our camp is not fenced to give you the real 'Out of Africa' feeling. For your comfort and safety, please read the following information:

### • Alarm whistle

In case of any emergency, please use the whistle you find near your bed.

### • Askaris

Our Askaris guard the camp around the clock. Nevertheless, please do not - even in daylight - wander off the paths and too far from the tents and public areas without an escort. Once dark is approaching, please ensure you are escorted by our Askaris. For this purpose, a Security light switch is fixed outside your tent. When switched on you will be picked up by an Askari and escorted from your tent to the main building and back. Additionally, please always carry your torch as well provided in the room.

### • "Baraza" Conference tent

Our conference tent with an 80 sq meters area is suitable for up to 20 persons with various seating layouts. The ideal location for executive bush meetings equipped with a DSTV video screen, audio system and WiFi. Please contact the camp management for further information.

### • Bedclothes

Should you wish to use additional bed covering besides the duvets provided, please inform our staff at the reception.

### • Boutique

In our small boutique you will find all kinds of souvenirs, postcards etc. It is open from 06:30 am to 10:30 pm. You can also find Kenyan made products at the boutique like Procera Gin, Bahari Rum, Body Wash, Conditioner etc.

### • Drinking water

The glass bottled water provided in your bathroom. You can buy additional mineral water in our Thorn Tree Bar. We also provide free water at our lobby and at the Spa that you can drink any time you would like to.



### • Electricity / Lamps

Generators provide our camp with electricity. They are switched off between 1600 hrs to 1800 hrs. In the meantime, when the generators are switched off, it means that there is no electricity. The USB universal sockets provide 220 Volt. Adapters are available at our boutique for sale.

### • Environment

Severin Safari Camp complies with the principles of ecological tourism. To ensure that the fragile ecosystem in the park is maintained, special emphasis has been given to the design of camp and service facilities. We invite you to support our efforts by not littering the bush and use the waste bins provided in each tent and within the premises.

• **Fire**

Every tent is equipped with a fire extinguisher. In case of fire, please immediately alarm your neighbors, reception, Askaris, or any other staff member. At night, please use your whistle.

Once you spot a fire in the main building or hear the fire alarm, please head directly to the assembly point at the parking lot.

Within the whole camp area as well as in the national park, no open fires or candles are allowed!

• **Footpaths**

Please always use the footpaths and avoid open shoes!

• **Hair dryer**

Every tent and suite is equipped with a hair dryer.

• **Internet access**

You have access to the internet everywhere in our camp, the WiFi is free of charge.

• **KENBALI Spa**

The wordplay KENBALI consists of KENya and BALI in Indonesia and combines the African wilderness with Asian relaxation treatments. Our Spa area consists of 400 m<sup>2</sup> and offers a swimming pool, two treatment rooms, a sun terrace with a view of Mt. Kilimanjaro, reception, and bar. The pool is open from 07:00 am to 07:00 pm, please follow the pool rules, there is no Life Guard! Towels are at your disposal for free.

We offer a variety of relaxing massages for 30mins or 60mins from foot massage, and back massage to full body massage.

• **KENBALI Gym**

Open from 07:00 am to 07:00 pm with yoga mats, stepper and bicycle. Please only enter the area with sports shoes and adequate clothing and follow the fitness rules. Free water is available when doing your workouts.

• **Laundry**

Our camp's own laundry is of course at your disposal. Please find the laundry bags and lists on your shelf.

• **Luggage service**

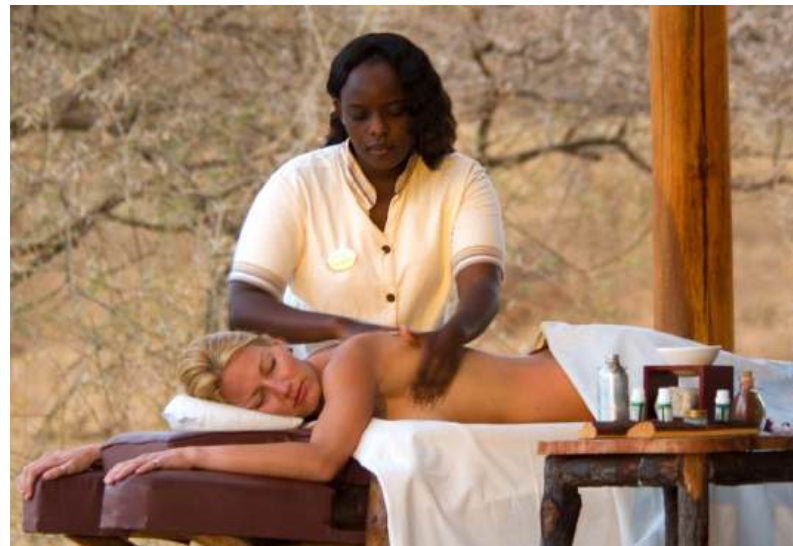
If you would like to have your luggage carried from your tent, please contact the reception.

• **Mealtime**

The normal mealtimes are as follows: Breakfast from 06:30 am to 10:00 am, lunch from 12:30 pm to 02:30 pm, and dinner from 07:00 pm to 09:00 pm. At 6:00 am and 04:00 pm, we have tea, coffee, and a bite to eat in our lobby. For any other requests, e.g. vegetarian, vegan, or children's menu, please contact one of our staff members. For a surcharge, we will also provide you with a picnic lunch box. Please order this at the reception the evening before.

• **Mosquitoes**

When covering your beds with mosquito nets in the evening, we also use an additional spray against the mosquitoes.



• **Payment**

We offer you a cashless service in our camp. Please sign for all your purchases, extra food, and beverages in the restaurant, bar, and shop and pay at the reception the day you are leaving by Mpesa or with one of the accepted credit cards Visa or Mastercard.

• **Postcards**

Every letter or postcard which is brought to our reception will be sent every Saturday and Tuesday.

• **Reception**

Our reception is open for you daily from 06:00 am to 11:00 pm. In the meantime, our Askaris are there to help you.

• **Repairs**

For any defects or other technical problems please inform the reception.

• **Reservations**

For any reservations required (overnights, excursions) please contact our reception.

• **Safe**

All tents and suites are equipped with a safe to deposit all your valuables.

• **Sickness**

In case of any sickness or injury, please inform the camp manager and/or the receptionist immediately as he has a First Aid Kit at his disposal. For further medication, there is a clinic which is located about 30 min. from the camp.

• **Smoking**

Smoking in your tent and our restaurant is strictly forbidden. But you are allowed to smoke on your private tent terrace and in the lobby. You can buy cigarettes at our bar.

• **Telephone**

Please note that there is no landline telephone in our camp, we have Safaricom network services if you possess a Kenyan sim card. (Specifically Safaricom)

• **Tents**

Always close your tent zipper from outside when you want to leave it! Make sure that the tent's zipper is closed before you retire for the night!

• **Tent service**

If you like to have drinks or coffee in your tent, please inform our staff at the restaurant or the reception. Meals are not allowed in the tent.

• **Tipping**

If you like to honor the service quality of our staff, please use the special tip box at the reception. The collected money will be shared amongst all staff members.

• **Tsavo Trilogy**

Author Nana Grosse-Woodley who's living in Kenya, has dedicated her book Tsavo Trilogy to the unique ecosystem of the Tsavo National Park. Within the three volumes » Stories Book«, »Nature & Landscape Book« and »Travel Log Book« the reader gets to know every important fact about this exceptional National Park and its history. The idea of writing a trilogy about the Park and its inhabitants came from Severin Schulte. For more information and ordering please visit [www.tsavotrilogy.com](http://www.tsavotrilogy.com).



• **Waking time**

During the evening you will be asked, what time you would like to be woken up the next morning. Coffee and tea are at your disposal in the lobby at 06:00 am and 04:00 pm.

• **Wild animals**

Wildlife likes to linger near the tents, especially in the evenings, but from time to time other wild animals may visit us. There is no danger, as long as you are in your tent or on the veranda. If you are afraid during the night, you can call an askari with your whistle.

Please do not turn your flashlight directly towards an animal! The same is true for cameras with flashlights! Especially hippos could try to attack you.

You are staying in a national park. Feeding or disturbing wild animals is strictly forbidden! It tends to disturb their natural behaviour and monkeys – especially baboons – become aggressive quite easily!

Please carefully read the Regulations applicable to Kenya's National Parks & Reserves

**We hope you feel comfortable in our camp and wish you a very pleasant stay and many unforgettable experiences during your safari!**

**Your Team of Severin Safari Camp**



# KITANI LODGE



Located a kilometer away from the main Camp, Kitani Bandas was one of the oldest existing occupational structures in Tsavo West National Park since the 1900's. Accommodated by a few of the many great people like Queen Elizabeth (as per the historians and repeat clients) makes it a very historic accommodating structure within Tsavo.

The Kitani Lodge is part of Severin Safari Camp; unlike the Camp which offers full board accommodation, Kitani Lodge is a self-catering Lodge with a bedroom with a three-bed capacity and a shower inside with essential guest amenities like soaps. Also with a full kitchen with all necessary utensils (Pans, cutleries, steam kettle, etc) for preparing your meals. The Gas cooker and a mini fridge are also available inside the kitchen.

Outside a single-vehicle open parking lot with a roof and a private fireplace with a barbeque grill upon request enabling you to roast your steak with firewood from within instead of charcoal which is a preventive measure to avoid cutting down trees. You can ask our room steward to help you light it up in the evening during check-in.

We do not have security during the night as a way of giving our clients a nice private stay but in case of an emergency, you can contact us through the mobile number provided on this folder. You are advised not to leave any valuables outside and not to leave the door open when going out for a game drive or checking out as baboons could take them away or do damage.

If you wish to have meals at the main restaurant at the Camp, you can book through our room steward or direct to the reception. The gym and Swimming pool are also available at the Camp and are free of charge, opening and closing hours are from 0700 hrs to 1900 hrs respectively. WiFi is available for free at the Bandas and Camp.

Check-in and Check-out are done at the main Camp reception. Kindly confirm all kitchen equipment is available upon checking in and before checking out, our room steward will do the same. The room keys must be handed over to the reception or room attendant during checkout.

# REGULATIONS APPLICABLE TO KENYA'S NATIONAL PARKS & RESERVES

Kenya is proud of its heritage. Thousands of visitors enjoy the unspoiled beauty of the land, scenery, and the fascination of wildlife living in its natural habitat. Kenya's parks and reserves were created to conserve the often delicate and endangered ecosystems. To ensure everyone's enjoyment and safety and to protect this heritage, visitors are requested to observe the following:

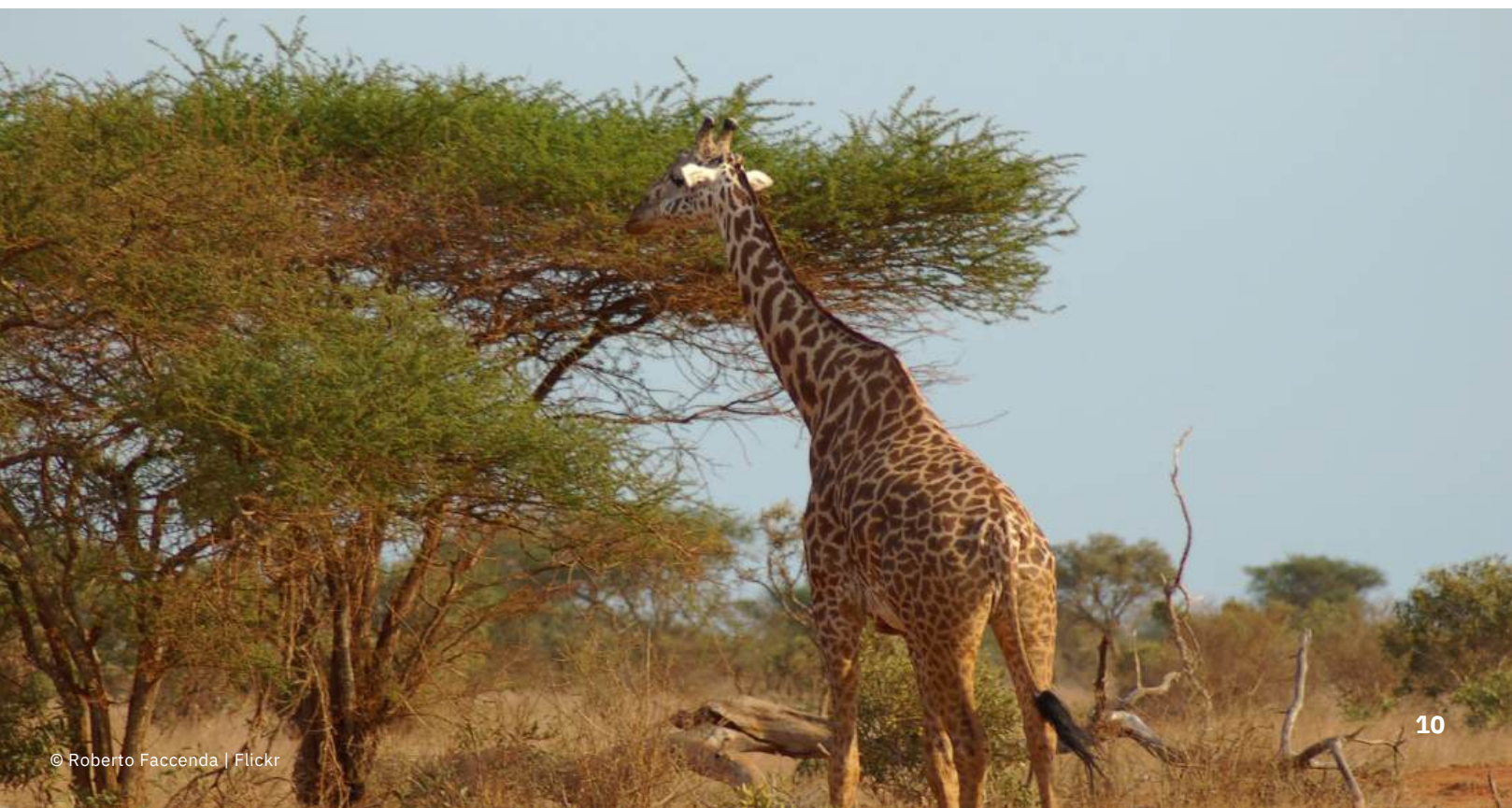
- Please do not disturb any animal. Making noises or sudden movements, or flashing lights frighten animals. If continually harassed, the animals will avoid human contact or could become aggressive. Never chase animals and keep noise to a minimum.
- For your own safety stay in your vehicle at all times – except where a signboard indicates you can do otherwise. Many of the parks and reserves have designated picnic sites and nature trails.
- Animals are wild and can be dangerous. Do not stand up in your vehicles unless you have adequate protection and supervision from a professional driver or guide.
- Do not damage vegetation or any fencepost, gate or sign post in the park. Plant damage can be irreparable resulting in loss of feeding and breeding grounds.
- Do not discard food or other litter: It is dangerous for the animals, as it disrupts traditional feeding patterns. It creates fire hazards and has the potential to maim or kill wildlife.
- Do not collect any form of fauna or flora from any parks or reserves.
- Respect the cultures and traditions of local people. Insensitive behavior, such as taking photographs of people without their consent or failure to observe local customs can cause irritation.
- Where there is a road system, do not drive off the road. Vehicles leaving the road damage the habitat, oil and fumes pollution and plant disruption can seriously affect the ecosystem by altering drainage patterns, soil erosion and pollution.
- Do not stop your vehicle in a position or behave in any way likely to inconvenience or annoy a fellow visitor. Consideration must be given at all times to wildlife and other enthusiasts keen to enjoy the same experience.
- In the interest of the wildlife and of other visitors there is a speed limit of 40 km/h for all vehicles. Drive carefully at all times, speeding results in accidents to wildlife as well as degradation of the road surface.
- Visitors should only enter or leave the park at an authorised park entrance or exit.
- Do not travel on a road that has been closed to the public as indicated either by a notice or barrier. There may be unusual obstacles or dangers, such as rock falls, subsidence or flooding.
- Local conditions may vary. The KWS wardens and rangers are there to assist and advise you. You should comply with any order or direction given by the warden or any other officer in the park.



# TSAVO NATIONAL PARK

Tsavo West and its neighboring park Tsavo East have been in existence since 1948. With a total area of over 20,000 km<sup>2</sup>, they are larger than the island of Jamaica and one of the largest reservations in East Africa. Tsavo West with its area of 7,065 km<sup>2</sup> is the smaller one and is located 250 km from Mombasa and 232 km from Nairobi – each is the distance to the entrance at Mtito Andei Gate. The camp itself is located 714 m above sea level, and there are two landing strips nearby.

Tsavo West National Park is situated in the Taita Taveta district in the Eastern province of Kenya. Traditionally, the ethnic groups of the Maasai, the Kamba and the Taita are living round the park. The altitude of both National Parks ranges from 150 to 1,800 meters above sea level. The Severin Safari Camp lies 714 meters above sea level.



# HISTORY

© www.projectjambo.org



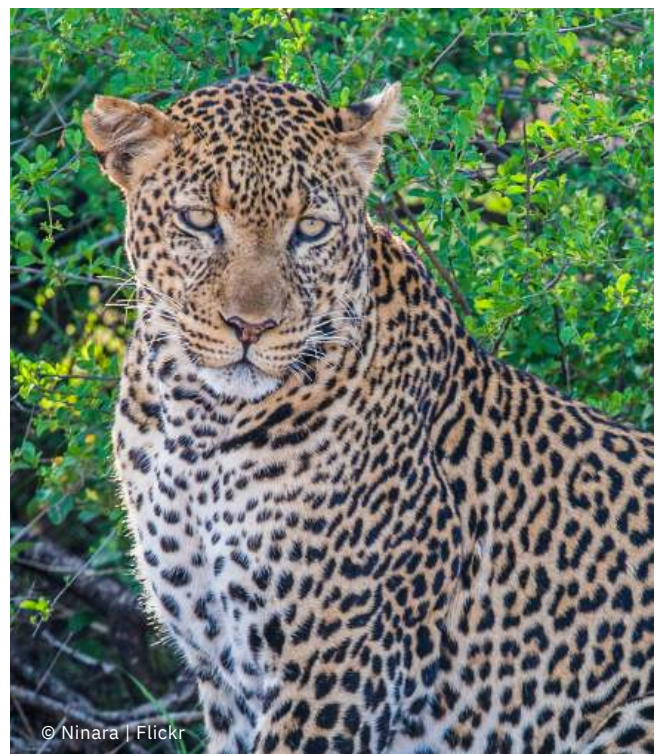
Tsavo means „place of slaughter“ in the Kamba dialect. This expression dates back to the bloody but interesting history of the region. When the warlike Maasai settled there, they often attacked the neighboring Kambas and slaughtered whole villages.

In the middle of the 19th century, caravans of slaves travelled through Tsavo on their way to the coast. Many paths and camping sites in the park follow these old routes and are respectively named. Also during the First World War, Tsavo was the hub of some battles. In order to protect the railway from German attacks, the British built fortresses, whose ruins can be seen even today.

# HABITATS

Tsavo East and West are located in the Somalian Maasai dry zone, a relatively dry ecological zone with annual precipitation of 200 to 700 mm and temperatures from 20° to 36 ° degrees. Although Tsavo West is dominated by acacia-commiphora bush, there are various other habitats.

Within the forests along the Tsavo River, fibre acacias, doum palms and tamarind grow. Especially during the dry season, these forests shelter lots of game. Within the open grassy savannah, various types of acacias grow. Leopards and daisies prefer the rocks of the Ngulia Mountains and the expanses of lava rocks.



© Ninara | Flickr

# DIVERSITY OF SPECIES

In Tsavo West there are over 60 different mammal species, including the threatened black rhinos and the African wild dogs. On game drives you have the chance to see the „Big Five“ (elephant, buffalo, rhino, lion and leopard). Furthermore there are many zebras, giraffes, impalas, red hartebeests, waterbucks, elands and gemsboks. Within the dense coppice you may sometimes discover the beautiful and shy kudus. The small and dainty dik dik live only in pairs and can often be found on the verge of the road.

Cheetahs aren't seen very often, but sometimes you can find them hunting impalas, one of the dominant ungulate species in Tsavo West. Tsavo is famous for its lions, especially for the famous men-eaters of Tsavo: „The Ghost“ and „The Darkness“, two male lions, which killed 28 Indian railroad workers, when the railway came to Tsavo in 1898. Colonel Patterson, who was responsible for the building of the bridge over the Tsavo river, finally killed the two lions and sold their coats to the Chicago Museum, where they can be seen even today. Just like all male lions in Tsavo, the two had nearly no mane.



In Tsavo you will find the unique “red” elephants. Today there are about 10,000 elephants in the ecosystem of Tsavo – some of them are coloured red from the typical red earth of the region. The ecosystem of Tsavo comprises about 30,000 km<sup>2</sup> and includes Tsavo East, West, the surrounding private ranches and the Mkomazi animal reservation in Tanzania. Between 1965 and 1990, elephants and rhinos were poached and the elephant population decreased from over 40,000 to fewer than 5,000 animals. Due to the efforts of the anti poaching unit of the Kenya Wildlife Service (KWS) the elephant population has picked up again.



There are over 600 bird species in Tsavo West. Additionally, migrant birds like the white stork, the roller or the swallow come to the park in October/November. A very fascinating bird is the hammer-headed stork, a midsize bird which builds one of the world's biggest nests. Other birds, which can be regularly seen, are the glossy-starling, the helmeted Guinea fowl, the bateleur eagle, the hornbill, the African masked weaver and the secretary bird, just to name a few.

# KENBALI – FREEDOM OF SENSES

The wordplay KENBALI consists of KENya and BALI and stands for the authentic African feeling in combination with hundreds of years of Asian relaxation treatments. We mainly focus on the harmony of body, mind, and soul with natural ingredients.

After an exciting day in the bush, enjoy the fantastic backdrop of the wilderness from the pool or relax with a pleasant massage in an absolutely private atmosphere. Trained therapists are there to advise you on what to choose from the Relaxing Menu. Luxurious dressing suites with showers and fresh towels are at your disposal. At the bar, you can enjoy refreshments or have your drink on our terrace whilst relaxing on sun beds with a stunning view of Mt. Kilimanjaro.

You don't want to spend your days without your workout? Our KENBALI fitness tent offers a nice panoramic view and is equipped with professional

equipment from Precor. This includes a treadmill, stepper, bicycle, and weight bench. Yoga mats and pillows are at your disposal as well.

The foot-bath and -massage "Gazelle of wilderness" for example is the perfect completion of a day in the bush and revitalizes you for the next safari. Feel the balance of body and soul during the "KENBALI – Journey of Senses" which creates a deep relaxation and harmonizes your senses with the Kenyan wilderness.

For further information and reservations please contact our management or reception.



# SEBA FARM – BIOLOGICAL CULTIVATION

Since the early 80s, the 5,6 hectares of the Seba Farm has been operated by Severin SeaLodge.

The farm is located near Kikambala, about 30 km north of Severin Sea Lodge. According to our environmental protection business concept, we abstain from the use of chemical fertilizers and cultivate fruits and vegetables biologically.

Most of the fruits and vegetables you eat in our restaurant, as well as chicken, eggs and honey, have been cultivated on our Seba Farm. Apart from growing fruits and vegetables we also breed chicken and ducks. Additionally we have our own beehives, from which we extract honey.

Our Seba Farm is one of the most popular destinations at the coast and is part of the excursion „Out of Africa“, which is organised by Severin Tours & Safaris.

**For bookings please contact our management or the reception.**



# BUSH ADVENTURE

The Kitani Safari Lodge with its breathtaking scenery is located in the Northwest of Tsavo West National Park and offers wonderful views on the mighty Mt. Kilimanjaro and the wide savannahs with all its natural wonders. From here you can experience exciting game drives and tours through the national park:

- Nearby you can visit Poacher's Lookout, a fascinating viewpoint and very popular for "sundowners". While enjoying sparkling wine and canapés you can experience the fascination of the African sunset.
- On short notice we can organize a walk around the camp with one of our experienced Masai. A great way to discover flora and fauna from a whole new perspective.
- Not far from Kitani Safari Lodge you will find the famous Mzima Springs: Subterranean springs which rise above the dry landscape like an oasis. Here you can meet hippos and crocodiles eyeball to eyeball.
- Around the lodge there are some paths and roads along the river, e.g. the Kitani or Kifaru circuit. They are especially suitable for comfortable early or afternoon gamewalks.
- A little bit further on you will find another viewpoint – Roaring Rock. From here you will experience a wonderful view to the Rhino Valley and the Ngulia mountains.
- The Chaimu Crater is located nearby Roaring Rock. It is an about 200 years old volcano which can be climbed.



Apart from game drives and walks, the Kitani Safari Lodge has some more interesting activities to offer:

- Night game drives
- Bush Breakfast or Bush Lunch
- Nosim Sunrise & Nosim Sunse
- Relaxing massages in our KENBALI SPA at Severin Safari Camp
- Workout in our KENBALI Fitness Tent
- 4 hrs KWS guided Walk

**For more information, prices, and reservations please contact the staff at our reception.**

# SEVERIN CRAFTSMAN TRAINING CENTER

For the local public of Kenya, resource education is a guarantor for social and national development. The Kenyan education system comprises 8-years of primary education, 4 years of secondary education and 4 years of university training. For those who do not qualify to attend secondary and/or university, they have an option to attend technical institutions to learn craftsmen trades. Children from humble backgrounds cannot afford to attend secondary schools. In most government schools classrooms tend to be overcrowded due to high enrolment of students and there is a shortage of equipment and teachers. So, what about the children that would love to continue learning after primary school but can't afford continuative education? This is where Severin Sea Lodge and the Craftsmen Training Center want to take up!

In cooperation with the German Association of International Cooperation (GIZ) and based on a developPPP contract, the hotel runs five training workshops for craftsmen professions. The Training Center at the Green Building aims to teach less of theoretical knowledge but more of manual skills with an immediate benefit to the local participants. In dependence on the dual education, craftsmen courses for electricians, plumbers, masons, carpenters and metalworkers are offered.

In our training company that was certificated by the Kenyan Technical, Vocational and Educational Training Authority (TVETA) only trainers certified by TVETA and trained according to German industrial training standards will be engaged. Besides theoretical courses in two classrooms practical courses are held in cooperation with local crafts enterprises and hotels. In addition, the preventive maintenance programs (PMP) for buildings and machines carried out by Severin Sea Lodge give the participants the ideal possibility

to realize their acquired knowledge in their area of training.

After completion of their courses the participants will undertake Ministry of Education certification exam at a TVET Centre. As there is a high demand for well trained skilled staff, the graduates won't have any problems finding a job in the region of Mombasa or open their own little crafts enterprise.



The students will pay a nominal fee and enrollment will comprise, as a minimum requirement, of students who have completed their primary education and are interested in learning craftsmen professions. For adolescents that can't afford the course fees themselves, we have founded the non-profit-making association "Skills for Kenya e.V."

For further information or the possibility to donate, please visit our webpage under [www.skillsforkenya.com](http://www.skillsforkenya.com) or [www.betterplace.org](http://www.betterplace.org) and search for **Severin Craftsman Training Center**.

