


2025/26

# Premier League Infiltrating midfielders

*Which midfielders  
are most effective at  
getting into the box?*

Swipe →

MyGamePlan 

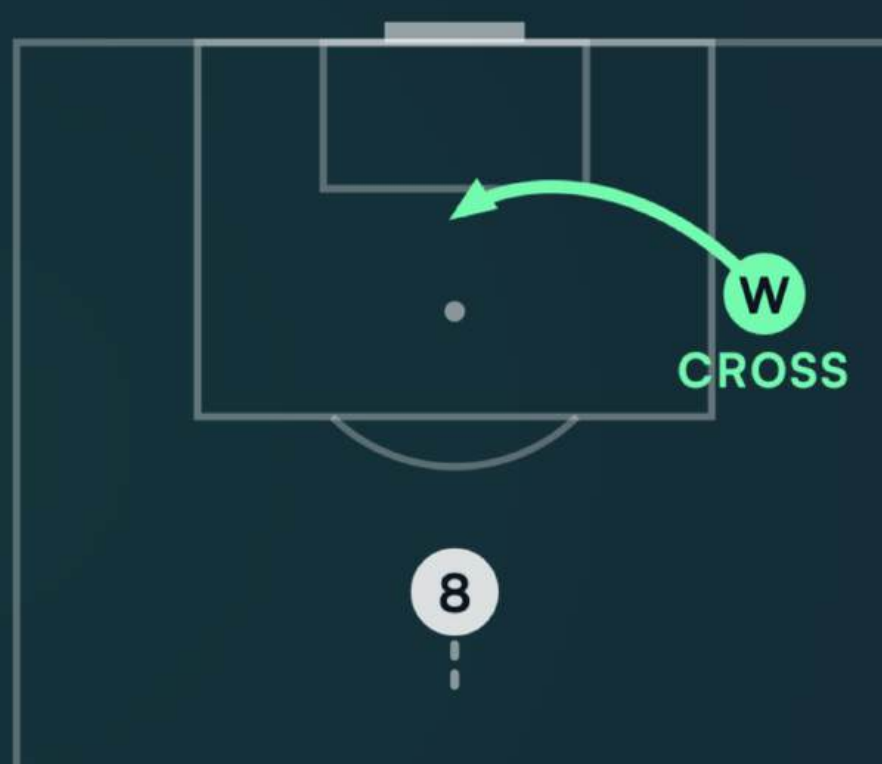
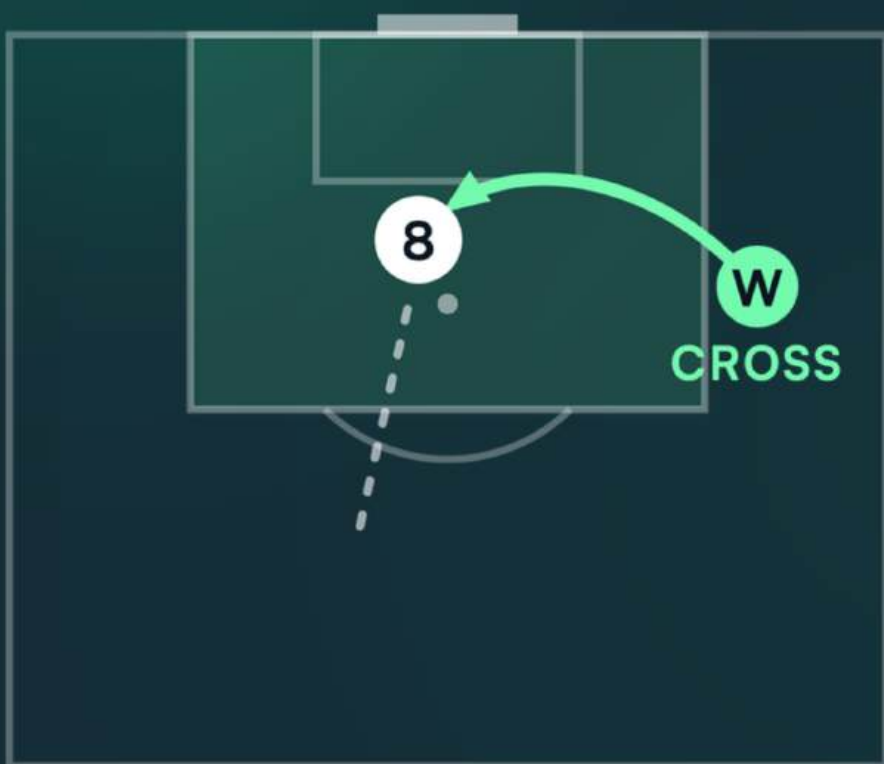




THE METRIC

# What is **box infiltration**?

When your team delivers an open-play cross, is your midfielder already inside the box, or still behind the play?



✓ **INSIDE THE BOX**

✗ **STAYED DEEP**

Measured from synced event and tracking data at the moment of the cross.

SCOPE



# What we **measured**

We looked at the 2025/26 Premier League season to check which midfielders get in the box, shoot, and finish their chances.

# 380

Premier League 25/26 matches with synced event + tracking data

# 67

Only **central / attacking midfielders** qualified for the ranking (min. 1,000 minutes)

# 3

Views comparing the same pool of players: **infiltration %**, **shots per 90**, **goals per 90**

# 1

MyGamePlan **custom metric**. The same query can re-run across every league in one click.

## A METRIC NOBODY ELSE BUILDS

The whole ranking was generated by asking MGPT, our AI assistant. No SQL, no exports, no custom code.

## RANKINGS



# Top 10 infiltrators

% of own team's open-play crosses when they are positioned inside the box.

01	J. King	FULHAM	53.4%
02	M. Rogers	ASTON VILLA	49.4%
03	E. Smith Rowe	FULHAM	44.6%
04	E. Eze	ARSENAL	42.4%
05	L. Bergvall	TOTTENHAM	42.2%
06	P. Foden	MAN CITY	41.7%
07	F. Wirtz	LIVERPOOL	40.8%
08	E. Buendía	ASTON VILLA	40.6%
09	J. Willock	NEWCASTLE	38.0%
10	M. Mount	MAN UNITED	37.1%

Excluded: players regularly used as a striker (Merino, Gibbs-White, Joelinton). Their box numbers reflect position, not midfield runs.

## RANKINGS



# Top 10 players **shots per 90**

Same pool and minutes filter. Shots taken per 90.

01	R. Cherki	MAN CITY	1.77
02	T. Reijnders	MAN CITY	1.51
03	E. Eze	ARSENAL	1.47
04	C. Palmer	CHELSEA	1.41
05	F. Wirtz	LIVERPOOL	1.24
06	M. Rogers	ASTON VILLA	1.22
07	E. Smith Rowe	FULHAM	1.20
08	J. King	FULHAM	1.17
09	P. Foden	MAN CITY	1.17
10	D. Gómez	LIVERPOOL	1.10

Cherki tops the league for shots from a midfield role despite ranking #20 for box arrivals.

## RANKINGS



# Top 10 players goals per 90

Same pool and minutes filter. The players who finish their shots.

01	C. Palmer	CHELSEA	0.37
02	E. Eze	ARSENAL	0.27
03	K. Dewsbury-Hall	CHELSEA	0.25
04	T. Reijnders	MAN CITY	0.25
05	B. Fernandes	MAN UNITED	0.21
06	E. Fernández	CHELSEA	0.21
07	D. Gómez	LIVERPOOL	0.20
08	B. Guimarães	NEWCASTLE	0.20
09	M. Rogers	ASTON VILLA	0.17
10	F. Wirtz	LIVERPOOL	0.17

Palmer tops midfield goals from just #26 in box arrivals. Same for B. Fernandes at #47.



# Three patterns the data pulled out

## 1

Triple-elite: arriving, shooting, scoring.

**E. Eze** (#4 / #3 / #2), **F. Wirtz** (#7 / #5 / #10) and **M. Rogers** (#2 / #6 / #9) are top 10 in all three views. They get in the box, get the shot off, and also find the net.

## 2

Quality over quantity finishers.

**C. Palmer** is the PL's **#1 goal-scoring midfielder** while ranking only #26 for infiltration. **B. Fernandes** has the same story. Both don't chase the box, but pick their moments.

## 3

All the runs, none of the reward.

**J. King** tops the league for infiltration (53.4%) but **ranks #38 for goals**. **J. Willock**, **L. Bergvall** and **E. Buendía** sit in the same gap.

YOUR TURN

Ask a tactical question.  
Get the answer in  
seconds.

TRY MGPT

[mygameplan.ai](https://mygameplan.ai)

MyGamePlan 