

The logo consists of the letters 'NAMP' in a bold, teal, sans-serif font. A solid red circle is positioned between the 'A' and 'M'.

INTEGRATED SECURITY SOLUTIONS

Presented by : NORTHERN ALARM PROTECTION

[WWW.NORTHERNALARM.COM](http://WWW.NORTHERNALARM.COM)

# NAP

For more than five decades, Northern Alarm Protection Co Limited (NAP) has delivered advanced security and life safety technology solutions to businesses across Ontario.

Our expertise spans the design, integration, and management of intelligent security systems that safeguard people, assets, and operations.

- Managing sales and service operations across key security partners in Ontario
- Operations in Richmond Hill, Ottawa and Hamilton
- Strengthened province-wide presence, technical capability, and scalable security solutions

Serving Businesses for over 55 years. Built on Trust.

# We Build on Trust. We Drive Results.

## Our Vision ●

To become a leading force in our industry by expanding our reach, building lasting partnerships, and delivering trusted solutions that help businesses operate safer, smarter, and more efficiently.

## Our Mission ●

We deliver dependable, high-quality solutions that protect and perform - built on trust, driven by accountability, and executed with precision every time.



# Our Technology & Integration Capabilities

NAP leverages industry-leading technology to deliver security solutions that are intelligent, integrated and future-ready.

## Key Capabilities:

- AI-Powered Video Analytics
- Live Video Monitoring & Remote Access
- Integrated Access Control
- Intrusion & Environmental Monitoring
- CCTV (Closed-Circuit Television)

Advanced Technology. Seamless Integration. Built on Trust.

# Our Values

At Nap, we are more than a company- we are a family. From our team members, distributors, and clients, we operate as one unified team, supporting each other, celebrating success, and growing together.

We are deeply committed to our community, giving back through charitable initiatives, local events, and programs that make a meaningful difference.



**TRUST & INTEGRITY**  
Every action reflects honesty and reliability



**TEAMWORK & SUPPORT**  
Collaboration is at the heart of everything we do



**COMMUNITY & GIVING BACK**  
Making a positive impact where we live and work

Stronger Together. Committed to Community. Built on Trust.

# Dealership Groups

We currently support four dealership groups. NAP brings nearly 20 years of experience in the automotive dealership sector, and our portfolio has expanded over time to include AWIN, Weins, Drive, and Canada One.



**AWIN** / We  
Are  
You.  
AUTO WORLD IMPORTS NETWORK



**WEINS**  
AUTO GROUP



**drive**  
AUTOGROUP



**canadaone**  
AUTO GROUP

# Windows 7/10 End Of Life Support

Microsoft has officially ended support for these operating systems - meaning no security updates, no fixes, and increased risk.

- Security Vulnerabilities – Unsupported NVR operating systems are prime targets for cyberattacks
- Compliance Concerns – Many regulations require supported operating systems on security infrastructure
- Software Compatibility – Future VMS software updates may not function on outdated NVRs
- Hardware Limitations – Many older NVRs cannot support Windows 11 due to CPU and security requirements



# NDAA Compliance

NDAA compliance refers to following the National Defense Authorization Act requirements for security equipment

- Restricts the use of certain prohibited foreign-manufactured technology in government-related systems
- Applies to federal procurement and regulated security projects
- Helps ensure secure, trusted, and approved supply chain equipment usage
- Supports compliance with government and industry security standards



# ONVIF vs AI

## Open Network Video Interface Forum

ONVIF is a standard that lets different security devices (cameras, NVRs, VMS platforms) communicate with each other regardless of brand.

ONVIF mainly standardizes core functions such as:

- Video streaming
- PTZ (pan, tilt, zoom) control
- Basic event triggers

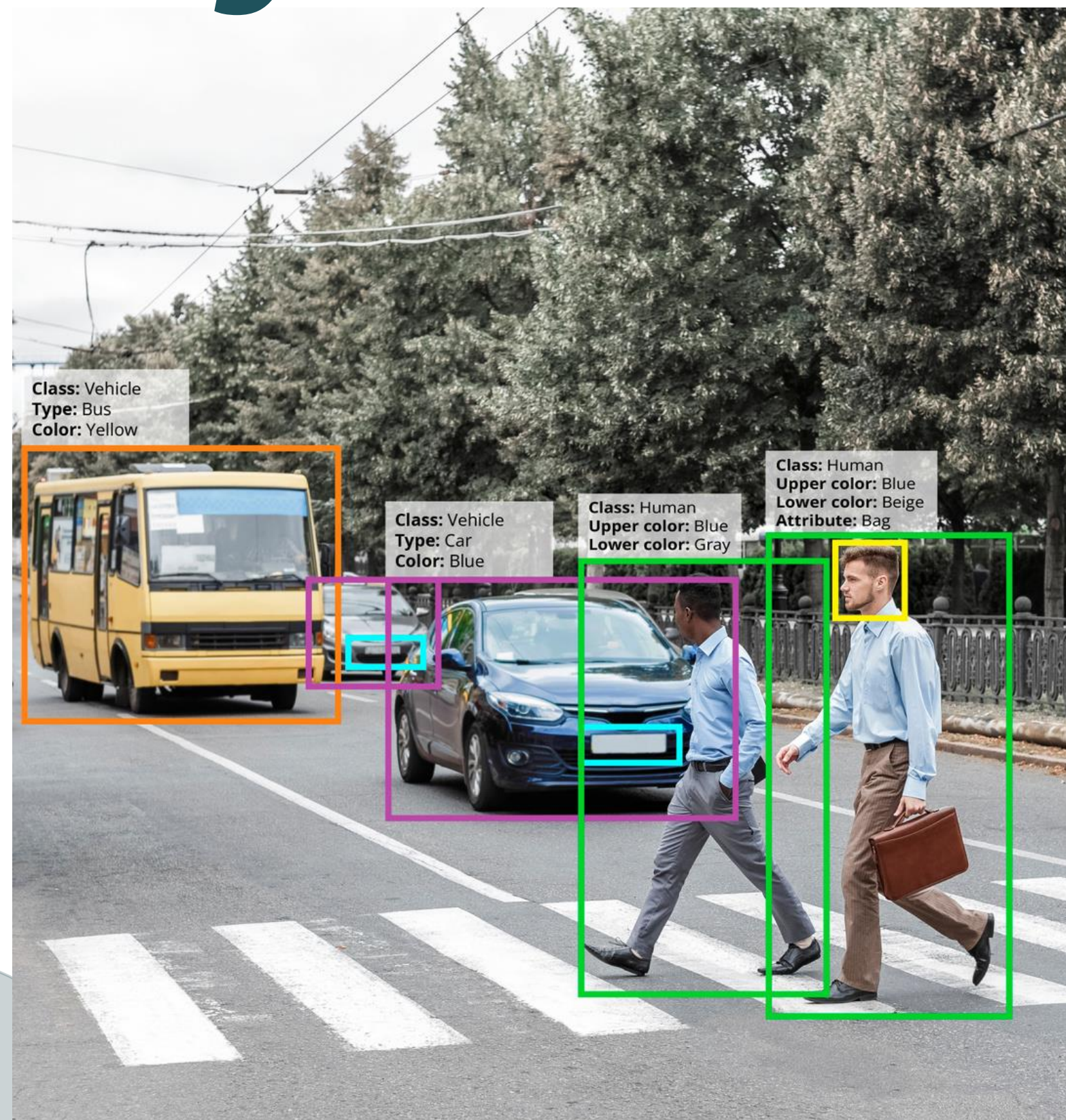
Advanced AI features vary by manufacturer, including:

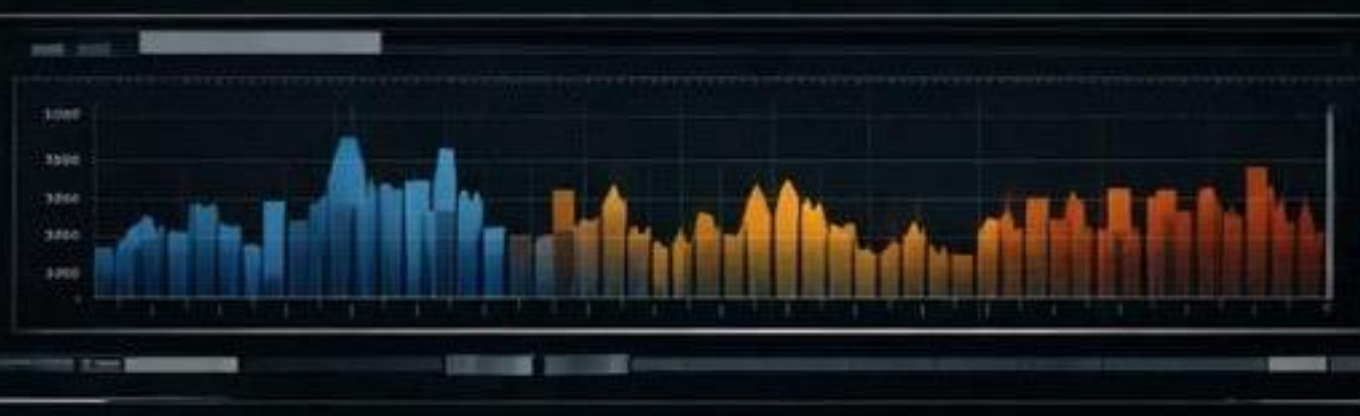
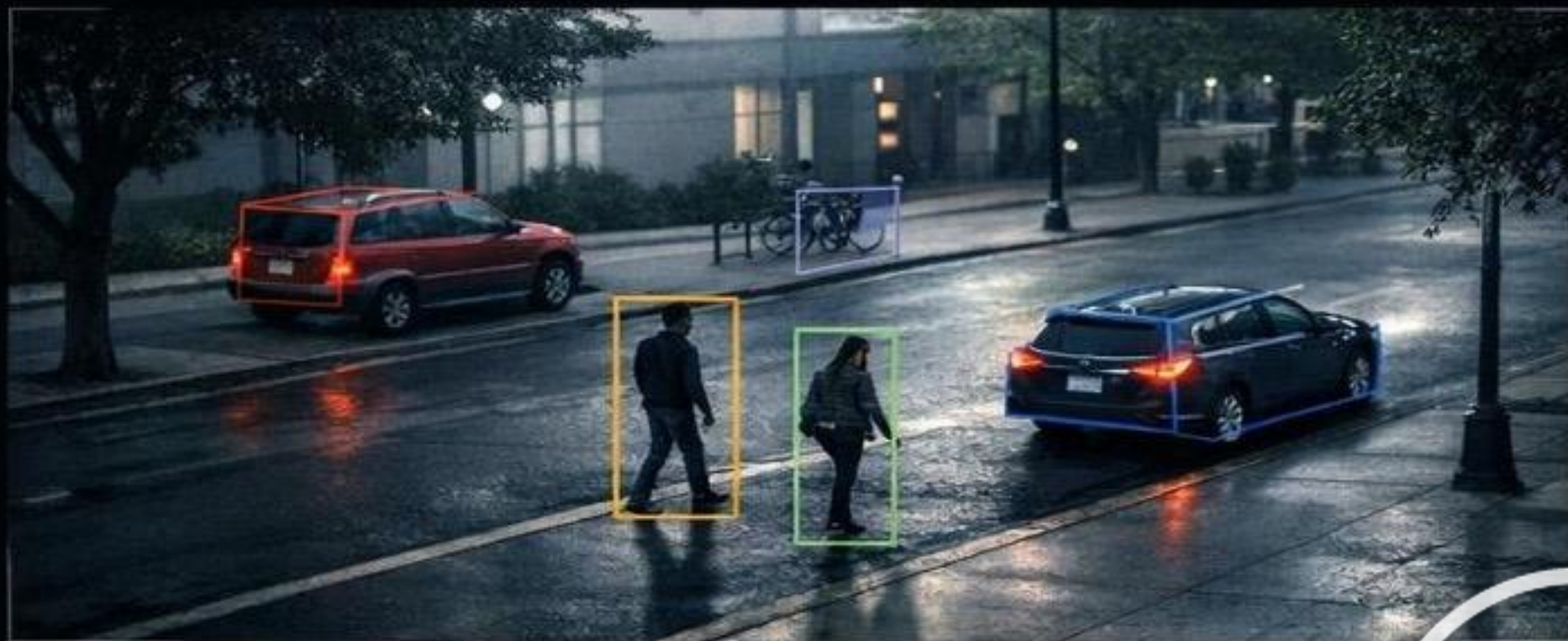
- Facial recognition
- License plate recognition (LPR)
- Behavior and video analytics



# AXIS Object Analytics

This system uses AI to help security cameras understand what they see. It can detect, identify, follow, and count people and vehicles accurately. It helps improve safety and efficiency by giving useful information in real time so decisions can be made faster.





# Smart Forensic Search

Axis Camera Station allows you to set several filters that help you easily locate:

- Objects
- People
- Events in video footage to make investigations faster and easier
- Colour Classification



Search Filters



# NAP & ULC

**Underwriters Laboratories of Canada (ULC)** certification helps ensure safety, reliability, and compliance with Canadian codes and standards

NAP is a ULC-listed alarm installation company certified to install, service, and inspect:

- Fire and sprinkler alarm monitoring systems
- Burglar alarm monitoring systems



Pass ULC certification, occupancy approvals, and insurance audits

# Benefits of ULC Certification

- **Regulatory compliance:** Meets Canadian building and fire code requirements for security and life-safety systems
- **Trust & reliability:** Certified, tested, and professionally maintained systems for dependable performance
- **Insurance:** Supports insurance requirements



# INTRUSION

Intrusion refers to unauthorized access

These systems use a range of sensors, including:

- Door and window contacts
- Motion Sensors
- Glass break sensors
- Smoke alarms / Fire Alarms
- Environmental alarms (temperature, water leak, humidity, gas, etc.)



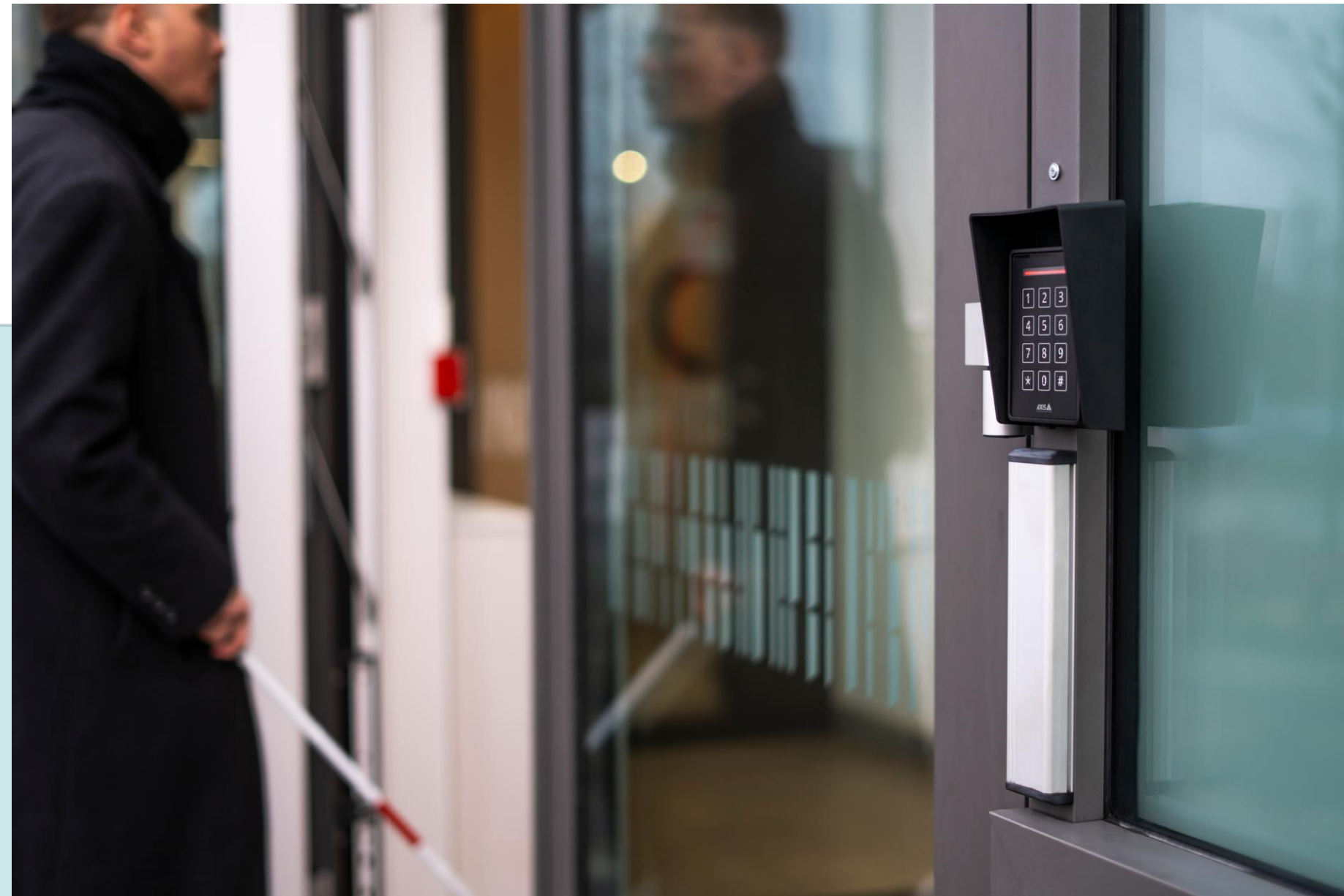
# Benefits of Intrusion Alarm System

- 24/7 monitoring for continuous protection and rapid response
- Reduces liability by documenting and supporting incident response
- Crime deterrence through visible alarms and security presence
- ULC fire/sprinkler system monitoring for fire safety compliance and alerts
- ULC burglary system monitoring for certified intrusion protection



# ACCESS CONTROL

Access control means deciding who can go in.



# What are the Benefits?

- **Enhanced security** - Restricts access to authorized individuals and reduces unauthorized entry risks.
- **Audit trail visibility** - Provides detailed logs of all entry activity for accountability and investigations.
- **Improved operational efficiency** - Eliminates the need for manual key management and reduces administrative workload.
- **Scalability** - Easily adapts to organizational growth, new locations, or changing access requirements.
- **Real-time monitoring** - Allows immediate visibility into who is on-site and when.
- **Integration capabilities** - Can connect with alarms, surveillance systems, and other security technologies.
- **Reduced risk of lost or stolen keys** - Credentials can be quickly deactivated without rekeying physical locks.



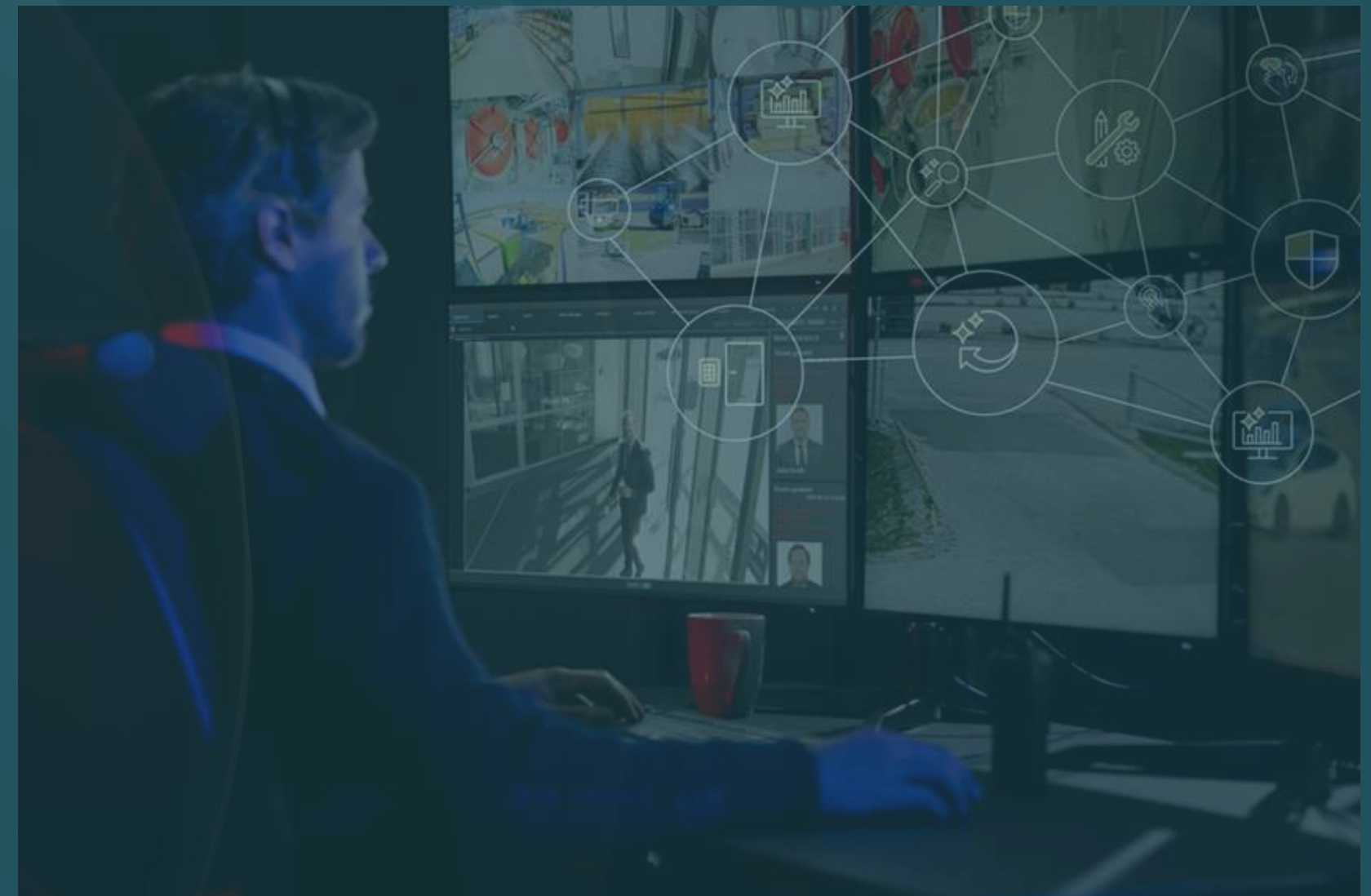
# CCTV

CCTV stands for Closed-Circuit Television



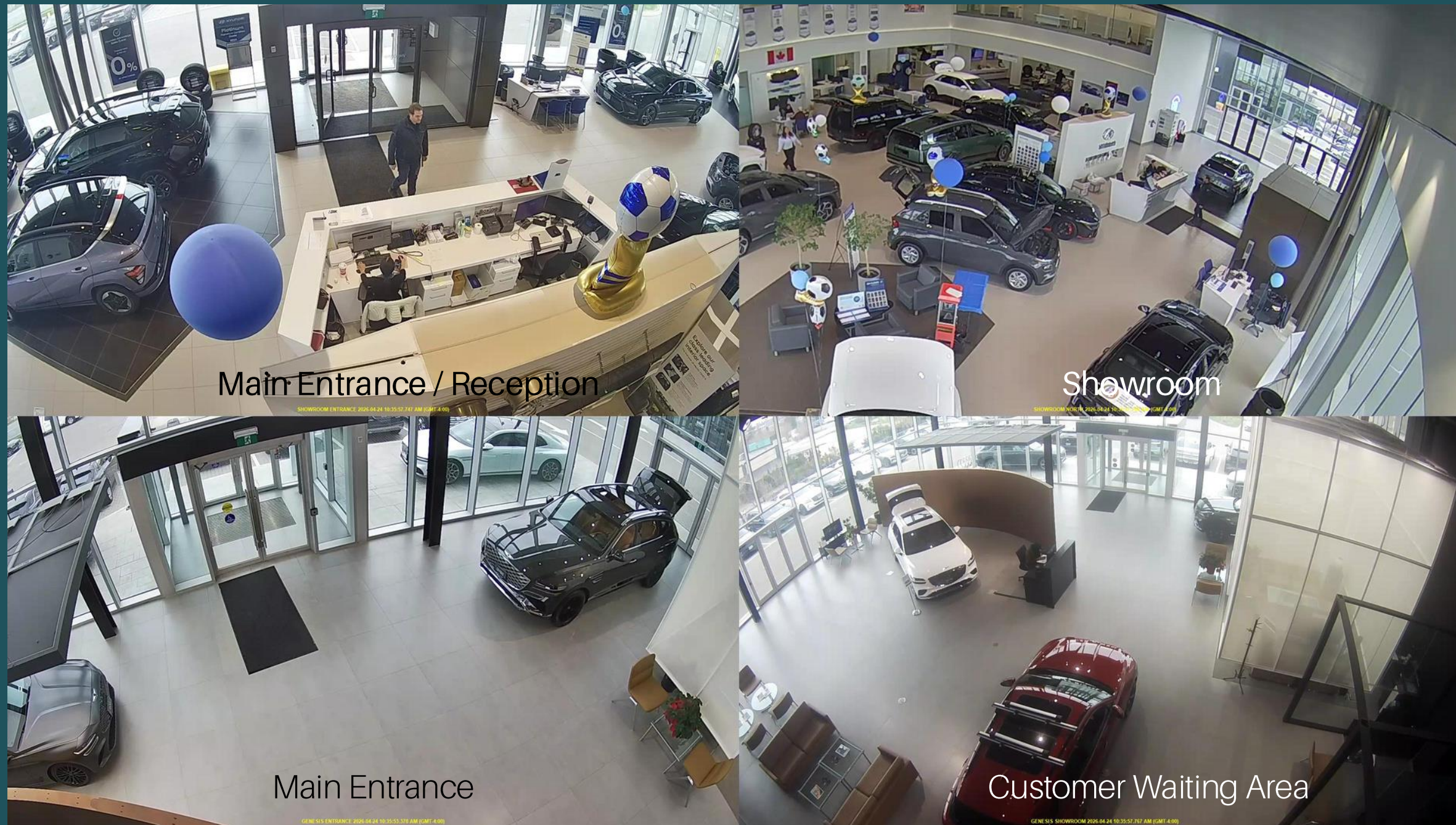
# What are the Benefits?

- Deters crime (theft, vandalism, trespassing)
- Live Video Monitoring
- Improves overall safety and security
- Helps reduce premises liability risks
- Offers 24/7 surveillance coverage
- Helps resolve disputes quickly
- Supports emergency response and incident review
- Enables photo analysis (image review for identification and evidence)



# Dealership Entry Point View





Enhanced Dealership Visibility with Multi-Angle Coverage



Keystack Surveillance Perspective

# Drive-Thru Visibility for Dealership Operations





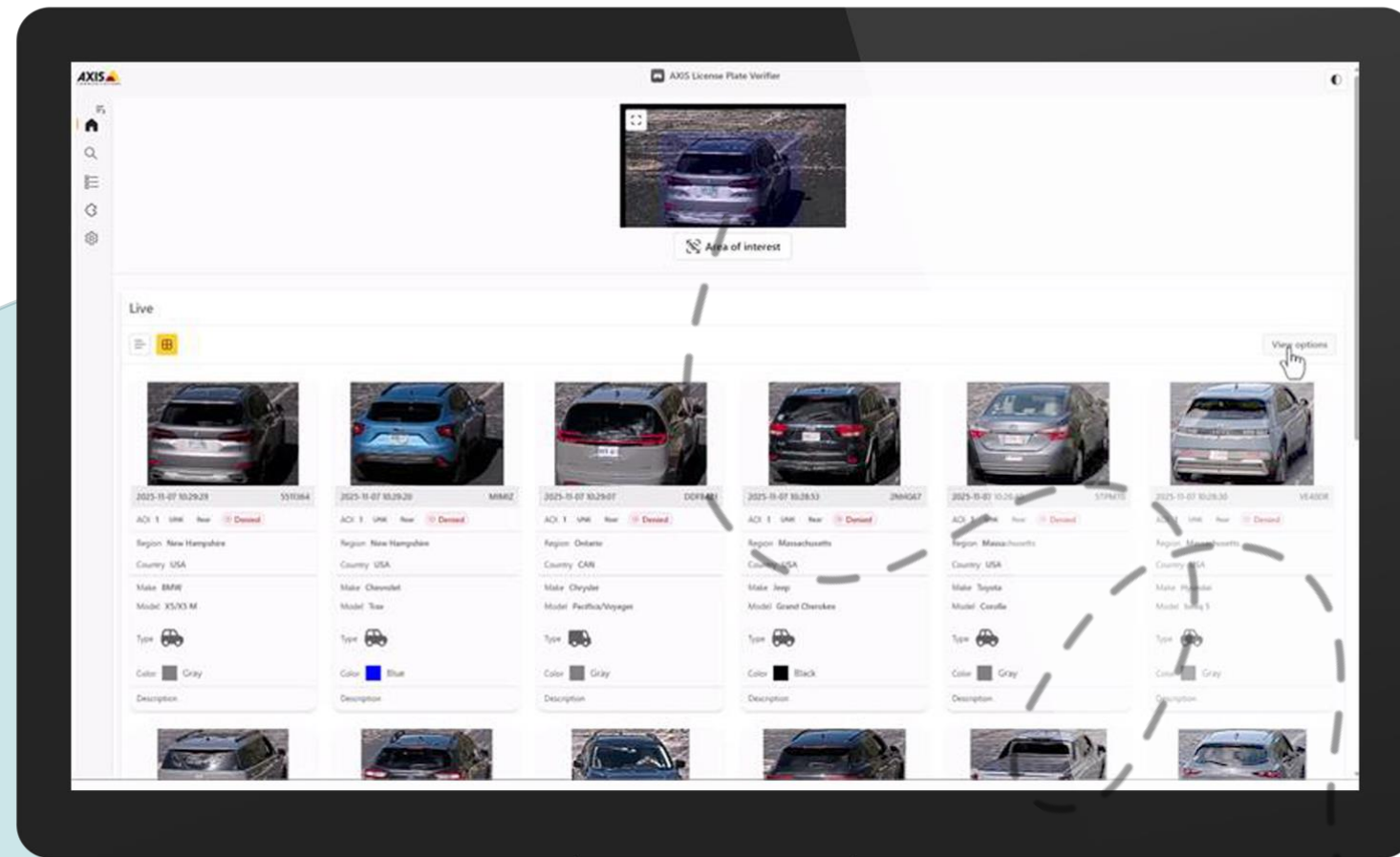
Precision Zoom Capabilities for Drive-Thru Liability Analysis



Precision Zoom Capabilities for Drive-Thru Liability Analysis

# License Plate Reconciliation

Reliable license plate recognition (LPR), also known as automatic number plate recognition (ANPR).







License Plate Reconciliation (Day Time View)



License Plate Reconciliation – Zoom Capability



License Plate Reconciliation (Night view)



License Plate Reconciliation (Night view)

# 180° Panoramic Views

- Multisensor cameras provide seamless 180° coverage with clear, high-quality images and minimal distortion
- Multiple sensors work together to deliver wide coverage and better image detail (higher pixel density)
- The stitched panoramic view removes blind spots for full visibility without losing detail







Enhanced Parking Lot Coverage with 180° Panoramic Views



180° Panoramic View with Clear Zoom Visibility



180° Panoramic View with Multi-Angle Perspectives



## Premises Liability: Slip and Fall Scenarios

Identifying risks and preventing costly claims



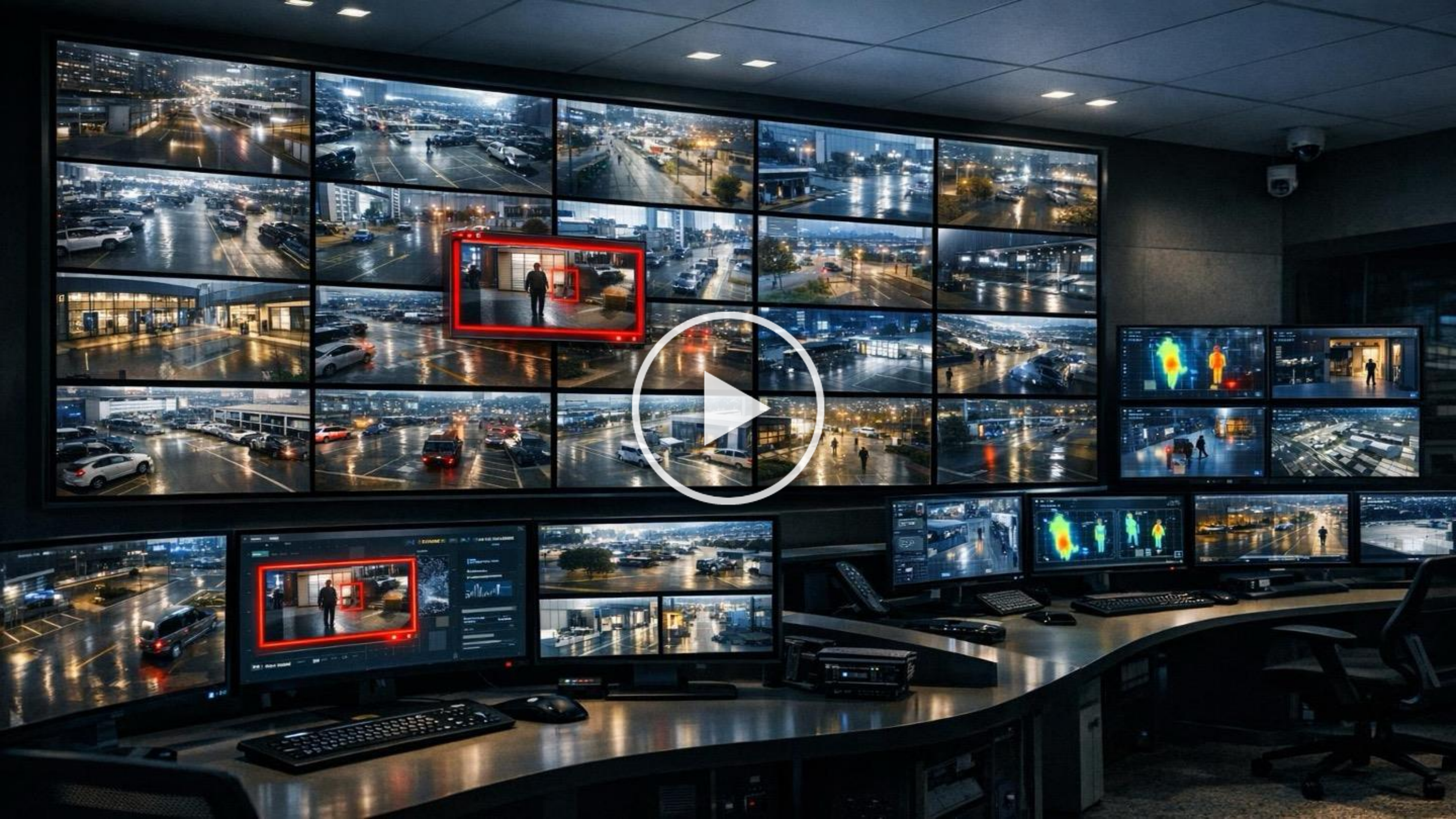
## Premises Liability: Slip and Fall Scenarios

Identifying risks and preventing costly claims

# Live Monitoring

- AI-powered video monitoring
- Real-time alerts
- Fewer false alarms
- 24/7 human monitoring
- Fast response to incidents
- Keeps your site secure
- Live operator intervention & verbal deescalation support
- Proactive theft & vandalism deterrence





# Thank You



INTEGRATED SECURITY SOLUTIONS

Security Built for  
Dealerships - Not Just  
Businesses



1 866 913 3700



[sales@northernalarm.com](mailto:sales@northernalarm.com)



[www.northernalarm.com](http://www.northernalarm.com)



556 Edward Ave, Unit 69 Richmond Hill,  
ON, L4C 9Y5