

Amare
group



TENDER to Quiet Revolution



AMV 330e



The Future of Electric Elegance.
Zero Emissions. Pure Innovation.
Made in Italy.

Embark on a New Adventure

Amy is the newest creation from Amare Group
a bold step forward in electric yachting.

Born from over a year of research and collaboration with visionary designers
and leading suppliers, Amy represents our unwavering commitment to
innovation, performance, and refined aesthetics.

Italian by Nature

Developed in collaboration with BurdissoCapponi Yachts & Design, Amy
continues a successful partnership built on precision and elegance.
Entirely designed and manufactured in Italy by Amare Group, the vessel and
propulsion system form a distinctive identity — where performance meets
timeless Italian style.





Pre-Preg Carbon Fiber Technology

Amy's structure is crafted in advanced pre-preg carbon fiber, ensuring:

- Exceptional lightness
 - Superior structural integrity
 - Smooth, flowing surfaces
 - High resistance to fatigue, UV exposure, and harsh marine environments
- A perfect balance of strength and beauty — engineered for the sea.

Award-Winning Propulsion

Powered by the MITEK Revolve electric engine, compatible with any battery configuration for flexible autonomy and optimized weight management.

Recipient of a Special Mention at the Metstrade
“DAME Design Awards 2024”.

Premium performance. Outstanding onboard safety.

Silent. Responsible. Refined.

Amy produces zero local emissions and minimal acoustic impact, making it ideal for:

- Marine parks
- Protected lakes
- Nature reserves

Designed to access pristine waters with elegance and environmental respect.

UPHOLSTERED SEAT WITH BACKREST
For enhanced comfort

YACHT LOGO

TAILLIGHT
And status information

ELECTRIC ENGINE
Revolve by MITEK

PRE-PREG TECHNOLOGY
RECYCLED CARBON FIBER HULL,
STRUCTURE AND WALKAROUND

NON-SLIP SURFACES
Perimeter and floor

360° WALK-AROUND SURFACE
Solid surface for comfortable boarding
and disembarkment

BOW STORAGE

BOW FENDER

UNDERSEAT STORAGE

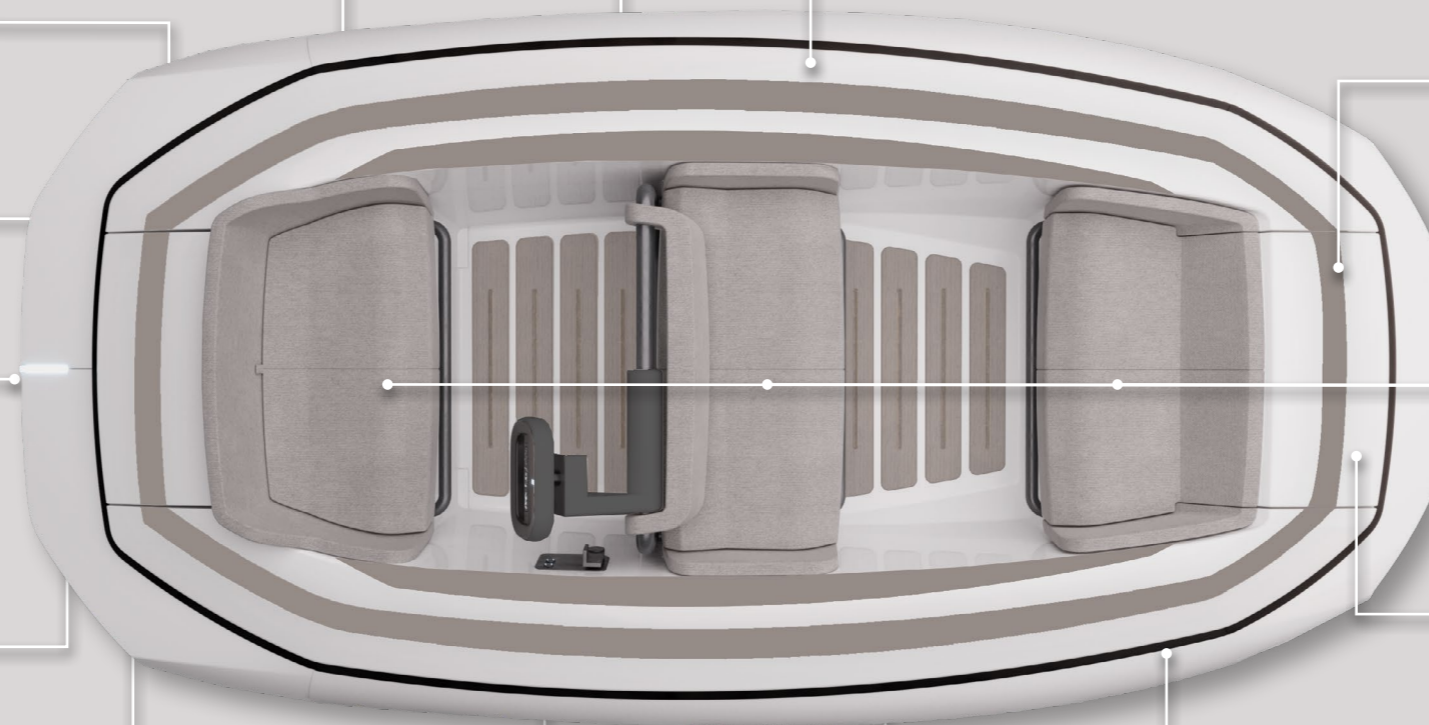
CHARGING POINT

STERN STORAGE

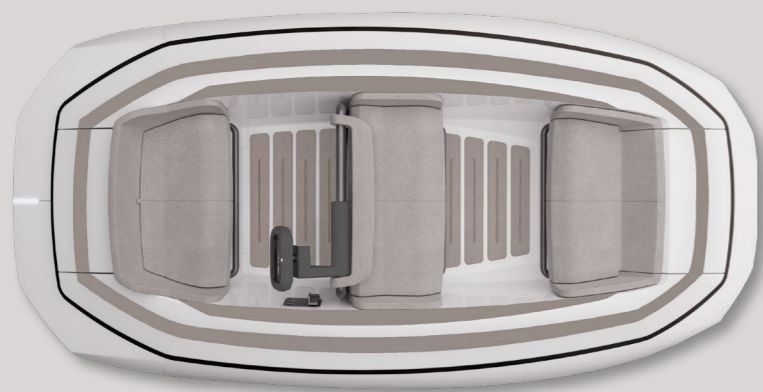
COMPACT STEERING WHEEL
With ASW Wireless
Automation for real-time status
communication with main Yacht

BATTERIES
in underseat storage

CONCEALED TUBES







Amare
330e

SPECIFICATION

LOA

3.30m / 10ft 10in

DRY WEIGHT

290kg / 639lbs

SEATING

4+1

HEIGHT

0.90m / 2ft 11in (with steering wheel)
0.72m / 2ft 4in (without steering wheel)

BEAM

1.7m / 5ft 7in (with inflatables)
1.58m / 5ft 2in (hull only)

DRAFT

0.24m / 9.4in with one person
0.33m / 1ft 1in full load

ENGINE

MITEK Revolve 20

BATTERIES

3 LiFePo4 (Lithium Iron Phosphate) modules of 48V 100Ah.

with a total capacity of 15 kWh.

MAX SPEED

21 kn (one person of 75kg)

RANGE

- at max speed (21kn) with one person - 14,1 kw: 1h 10min
- at 10kn with one person - 8,5 kw: 2h 11min
- at max speed (18kn) with 2 people - 14,1 kw: 1h
- at 10kn with 2 people - 8,5 kw - 2h

FEATURES

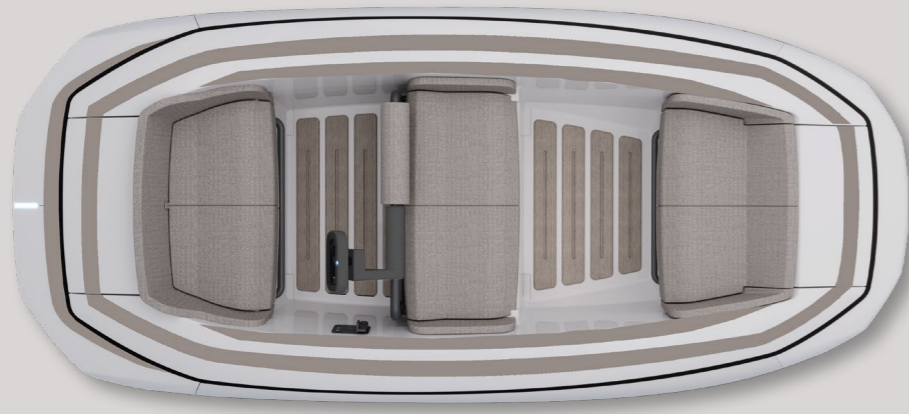
STANDARD FEATURES

- Watertight battery pack
- Battery isolator switch
- LED charge indicator
- Plug-in navigation lights
- Upholstered seat with fire resistant foam
- Three under seat storage compartments
- Removable seat cushions for easy storage access
- Foldable, height-adjustable steering wheel
- Digital display with ASW Wireless Automation integration
- Fire extinguisher
- Safety kit (vest, safety ladder, paddle and torch)
- Throttle / shift control
- Engine flushing point
- Bow U-bolt
- Stainless steel tube grab handles
- Four point lifting pad-eyes
- Tube repair kit
- Footpump
- Mooring Cleats

OPTIONAL FEATURES

- Premium upholstery textil
- Full custom upholstery
- Carbon style tubes
- Coloured hull gelcoat
- Custom spray painting
- Illuminated transom logo
- Yacht name or logo embroidery on upholstery
- Yacht name or logo applied to tubes
- Bathing ladder
- LED Deck lights x4
- Underwater lighting system
- EVA soft kit floor
- EVA soft non-slip superstructure
- Fresh water shower

- Dockside charging cable 220V-110V
- AC DC Shorepower
- Automatic tube inflator (full or bow)
- MCA compliant high visibility
- VICTRON battery pack
- Auxiliary automatic blingepump
- GPS chartplotter RAYMARINE
- Digital Depth Sounder
- Music BT audio
- VHF Radio
- AIS System to be ordered with VHF Radio (420 only)
- 1 x USB and 2 x USB-C charging ports
- GSM system for mobile APP
- Touch screen radio display for main yacht
- RINA recharge certification fire extinguish
- Tie downs
- Lifting strops
- Over straps
- Single point lift
- Dock ropes
- Anchor AISI316L
- Underseat steel handles
- Towing hook
- Pop up cleats x4
- Electric Inflator
- Telescopic paddle
- Adult and children lifejackets
- Overall cover
- Custom waterbottle x2
- Safety medical kit
- Custom beach towel



AMARE
395e

SPECIFICATION

LOA

3.95m / 12ft 11in

SEATING

5+1

HEIGHT

0.95m / 3ft 1in (with steering wheel)

0.77m / 2ft 6in (without steering wheel)

BEAM

1.8m / 5ft 11in (with inflatables)

1.65m / 5ft 5in (hull only)

DRAFT

0.25m / 0ft 10in with one person

0.35m / 1ft 2in full load

ENGINE MITEK Revolve 20

BATTERIES

3 LiFePo4 (Lithium Iron Phosphate) modules of 48V 100Ah. with a total capacity of 15 kWh.

MAX SPEED

20 kn (one person of 75kg)

RANGE

- at max speed (20kn) with one person - 15 kw: 1h 10min
- at 10kn with one person - 9,5 kw: 2h 08min
- at max speed (17kn) with 2 people - 15 kw: 1h
- at 10kn with 2 people - 9,5 kw - 2h

DRY WEIGHT

340kg / 750lbs

ENGINE MITEK Revolve 35

BATTERIES

5 LiFePo4 (Lithium Iron Phosphate) modules of 48V 100Ah. with a total capacity of 25 kWh.

MAX SPEED

24 kn (one person of 75kg)

RANGE

- at max speed (24kn) with one person - 25 kw: 1h
- at 10kn with one person - 9,5 kw: 2h
- at max speed (21kn) with 2 people - 25 kw: 1h
- at 10kn with 2 people - 9,5 kw - 1h 55min

DRY WEIGHT

389kg / 858lbs

FEATURES

STANDARD FEATURES

- Watertight battery pack
- Battery isolator switch
- LED charge indicator
- Plug-in navigation lights
- Upholstered seat with fire resistant foam
- Three under seat storage compartments
- Removable seat cushions for easy storage access
- Foldable, height-adjustable steering wheel
- Digital display with ASW Wireless Automation integration
- Fire extinguisher
- Safety kit (vest, safety ladder, paddle and torch)
- Throttle / shift control
- Engine flushing point
- Bow U-bolt
- Stainless steel tube grab handles
- Four point lifting pad-eyes
- Tube repair kit
- Footpump
- Mooring Cleats
- Stern and bow benches with 2 seats each
- Fresh water shower
- Dockside charging cable 220V-110V
- AC DC Shorepower
- Automatic tube inflator (full or bow)
- MCA compliant high visibility
- VICTRON battery pack
- Ausiliary automatic blingepump
- GPS chartplotter RAYMARINE
- Digital Depth Sounder
- Music BT audio
- VHF Radio
- AIS System to be ordered with VHF Radio (420 only)
- 1 x USB and 2 x USB-C charging ports
- GSM system for mobile APP
- Touch screen radio display for main yacht
- RINA recharge certification fire extinguish
- Tie downs
- Lifting strops
- Over straps
- Single point lift
- Dock ropes
- Anchor AISI316L
- Underseat steel handles
- Towing hook
- Pop up cleats x4
- Electric Inflator
- Telescopic paddle
- Adult and children lifejackets
- Overall cover
- Custom waterbottle x2
- Safety medical kit
- Custom beach towel

OPTIONAL FEATURES

- Premium upholstery textil
- Full custom upholstery
- Carbon style tubes
- Coloured hull gelcoat
- Custom spray painting
- Illuminated transom logo
- Yacht name or logo embroidery on upholstery
- Yacht name or logo applied to tubes
- Bathing ladder
- LED Deck lights x4
- Underwater lighting system
- EVA soft kit floor
- EVA soft non-slip superstructure



AMARE
420e

SPECIFICATION

LOA

4.20m / 13ft 9in

SEATING

6+1

HEIGHT

0.99m / 3ft 3in (with steering wheel)

0.75m / 2ft 6in (without steering wheel)

BEAM

1.95m / 6ft 5in (with inflatables)

1.65m / 5ft 5in (hull only)

DRAFT

0.30m / 1ft with one person

0.40m / 1ft 4in full load

ENGINE 2x MITEK Revolve 20

BATTERIES

6 LiFePo4 (Lithium Iron Phosphate) modules of 48V 100Ah. with a total capacity of 30 kWh.

MAX SPEED

25 kn (one person of 75kg)

RANGE

- at max speed (25kn) with one person - 30 kw: 59min
- at 10kn with one person - 12 kw: 2h 20min
- at max speed (25kn) with 2 people - 30 kw: 1h 05min
- at 10kn with 2 people - 12 kw: 2h 02min

DRY WEIGHT

410kg / 904lbs

* ICE version available

LONG RANGE VERSION

ENGINE 1x MITEK Revolve 40

BATTERIES

2 LiFePo4 (Lithium Iron Phosphate) modules of 96V 230Ah. with a total capacity of 44 kWh.

MAX SPEED

26 kn (one person of 75kg)

RANGE

- at max speed (26kn) with one person - 29 kw: 1h 27min
- at 10kn with one person - 12 kw: 3h 20min
- at max speed (26kn) with 2 people - 31 kw: 1h 20min
- at 10kn with 2 people - 12 kw : 3h 07min

DRY WEIGHT

502kg / 1107lbs

* ICE version available

FEATURES

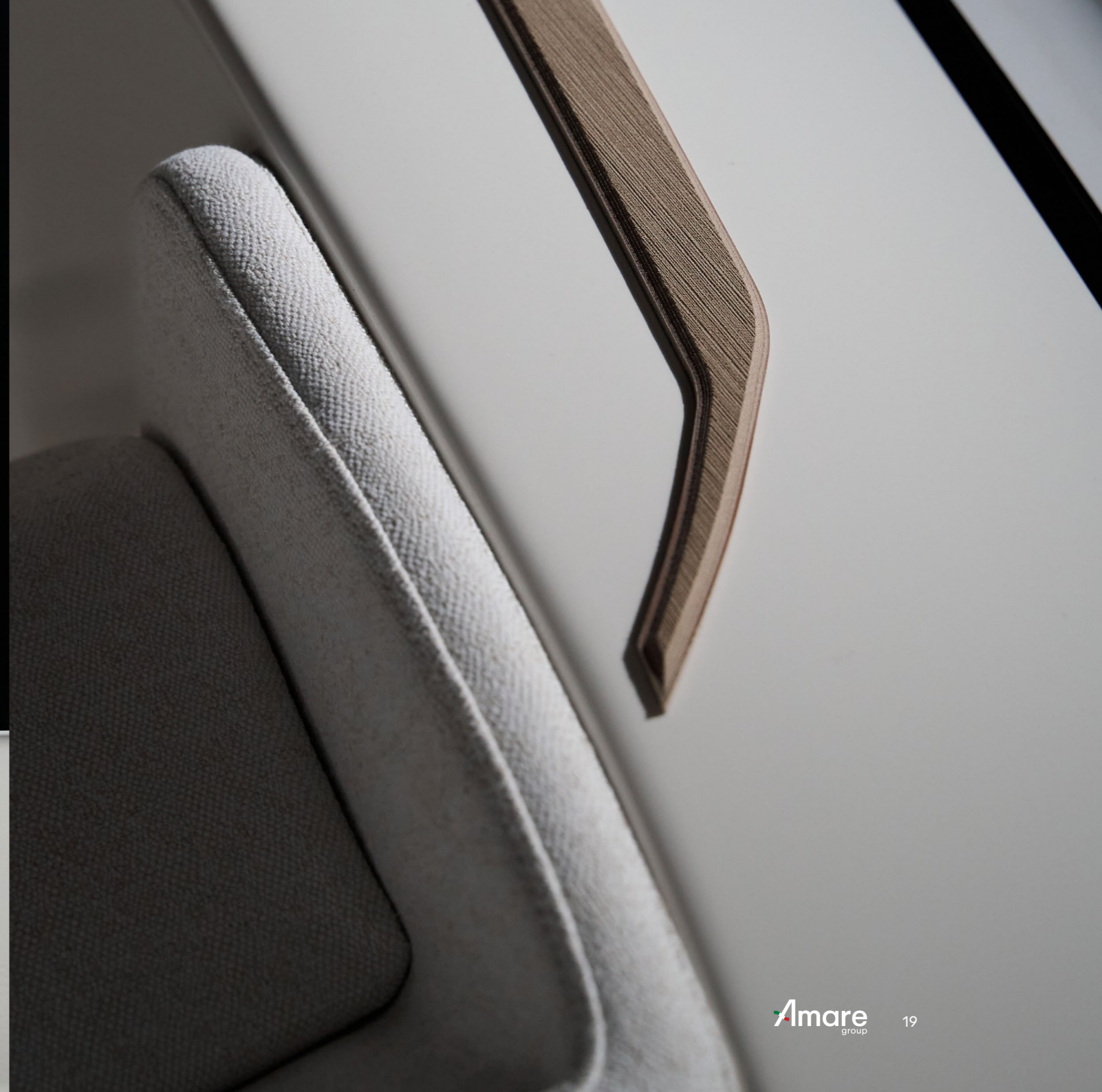
STANDARD FEATURES

- Watertight battery pack
- Battery isolator switch
- LED charge indicator
- Plug-in navigation lights
- Upholstered seat with fire resistant foam
- Three under seat storage compartments
- Removable seat cushions for easy storage access
- Foldable, height-adjustable steering wheel
- Digital display with ASW Wireless Automation integration
- Fire extinguisher
- Safety kit (vest, safety ladder, paddle and torch)
- Throttle / shift control
- Engine flushing point
- Bow U-bolt
- Stainless steel tube grab handles
- Four point lifting pad-eyes
- Tube repair kit
- Footpump
- Mooring Cleats
- Stern swim platform
- Stern seats with adjustable backrests to create a unique sunbathing area
- Internal walkaround layout
- Enhanced detailing in the upholstery

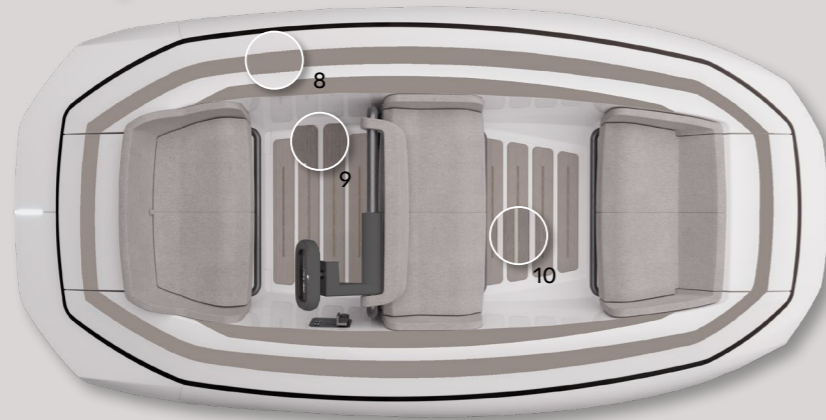
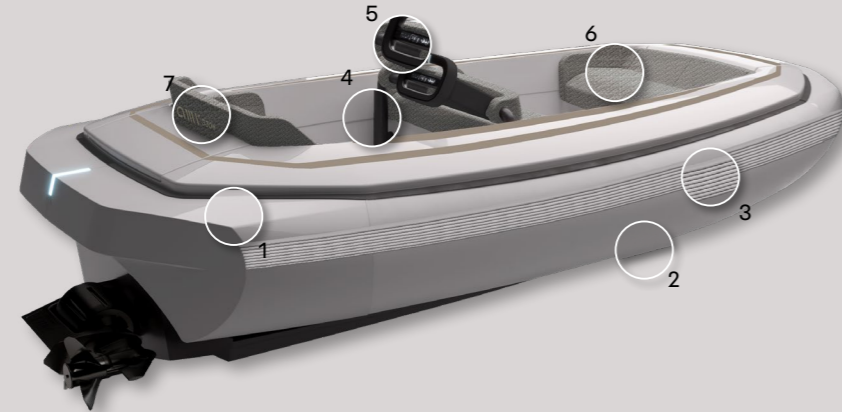
OPTIONAL FEATURES

- Premium upholstery textil
- Full custom upholstery
- Carbon style tubes
- Coloured hull gelcoat
- Custom spray painting
- Illuminated transom logo
- Yacht name or logo embroidery on upholstery
- Yacht name or logo applied to tubes
- Bathing ladder

- LED Deck lights x4
- Underwater lighting system
- EVA soft kit floor
- EVA soft non- slip superstructure
- Fresh water shower
- Dockside charging cable 220V-110V
- AC DC Shorepower
- Automatic tube inflator (full or bow)
- MCA compliant high visibility
- VICTRON battery pack
- Ausiliary automatic blingepump
- GPS chartplotter RAYMARINE
- Digital Depth Sounder
- Music BT audio
- VHF Radio
- AIS System to be ordered with VHF Radio (420 only)
- 1 x USB and 2 x USB-C charging ports
- GSM system for mobile APP
- Touch screen radio display for main yacht
- RINA recharge certification fire extinguish
- Tie downs
- Lifting straps
- Over straps
- Single point lift
- Dock ropes
- Anchor AISI316L
- Underseat steel handles
- Towing hook
- Pop up cleats x4
- Electric Inflator
- Telescopic paddle
- Adult and children lifejackets
- Overall cover
- Custom waterbottle x2
- Safety medical kit
- Custom beach towel



Customisations



- 1 - Superstructure colour
- 2 - Inflatable Tubes colour
- 3 - Rubbing Strake colour
- 4 - Handrails colour
- 5 - Steering Wheel upholstery
- 6 - Seat Upholstery fabric and colour
- 7 - Yacht Logo Embroidering and Logo
- 8 - Superstructure Non-Slip Inlay
- 9 - NON-SLIP Decking material 1 colour
- 10 - NON-SLIP Decking material 2 colour

Configurations

Configuration 1
LINENSTONE



Configuration 2
MOON



Configuration 3
TWILIGHT



Configuration 4
THE BIG BLUE

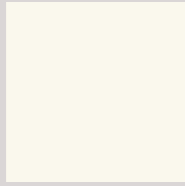


Configuration 5
FOREST GREEN

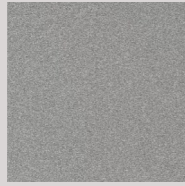


Materials

SUPER
STRUCTURE



A-S-01 Off White



A-S-02 Metal Grey



A-S-03 Olive Green

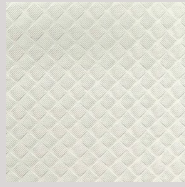


A-S-04 Steel Blue



A-S-C1 Carbon

INFLATABLE
TUBES



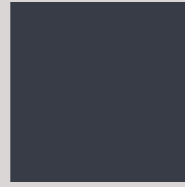
A-I-01 Off White



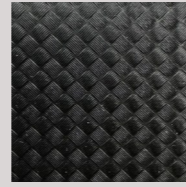
A-I-02 Neptune Grey



A-I-03 Army Green

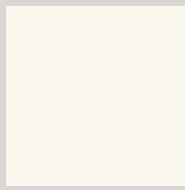


A-I-04 Dark Blue

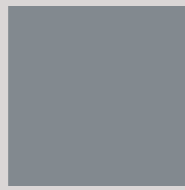


A-I-05 Black Carbon

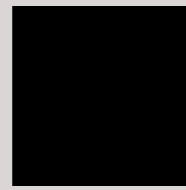
RUBBING
STRAKE



A-RB-01 White

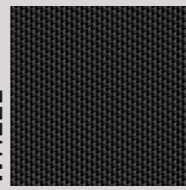


A-RB-02 Grey



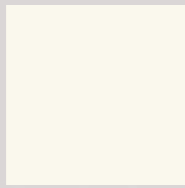
A-RB-03 Black

STEERING
WHEEL

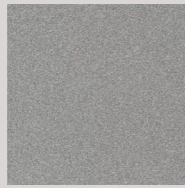


A-SW-01 Black

HANDRAILS



A-H-01 Off White



A-H-02 Metal Grey



A-H-03 Olive Green



A-H-04 Steel Blue



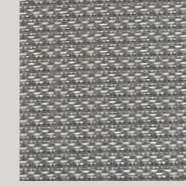
A-H-05 Black

Materials

SEAT
UPHOLSTERY



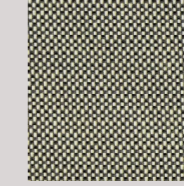
A-SU-11 Oat



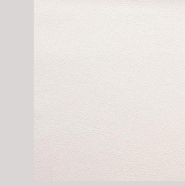
A-SU-12 Wheat



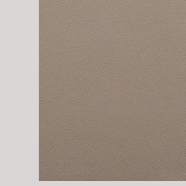
A-SU-13 Bark



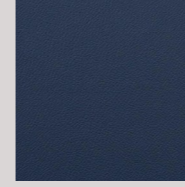
A-SU-14 Sage



A-SU-21 White



A-SU-22 Portobello



A-SU-23 Huron

LOGO
EMBROIDERING



A-LE-01 White



A-LE-02 Beige

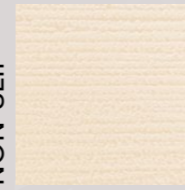


A-LE-03 Grey



A-LE-04 Black

NON-SLIP



A-ND-01 Cream



A-ND-02 Champagne



A-ND-03 Mist Gray



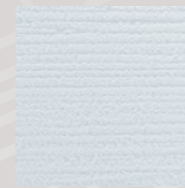
A-ND-04 Terra



A-ND-05 Espresso



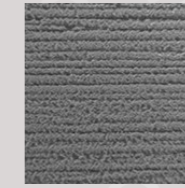
A-ND-06 M Camo



A-ND-07 White



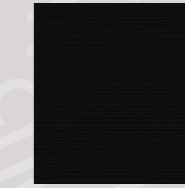
A-ND-08 Moonrock



A-ND-09 Slate Gray



A-ND-010 Charcoal



A-ND-011 Black

NON-SLIP
TEAK



A-ND-T1 Teak



AQUAVIA
330e



AQUAVIA
395e



AQUAVIA
420e