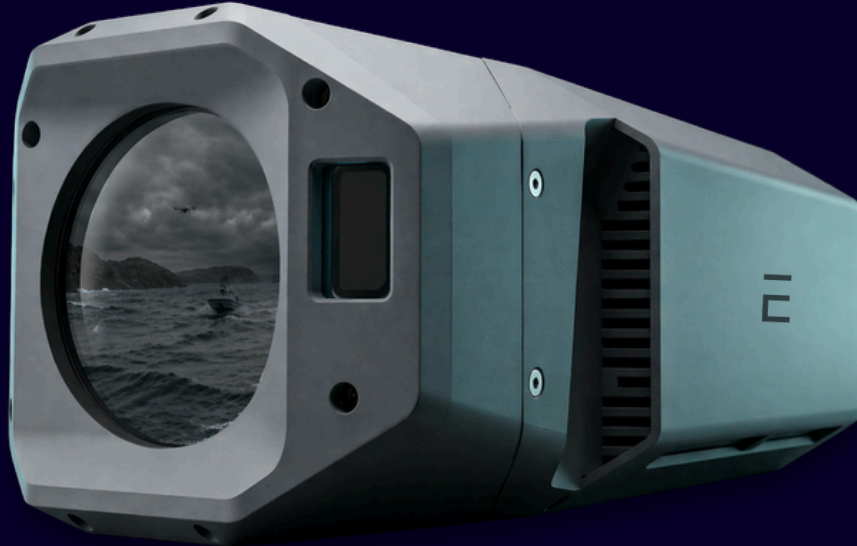


# Eoptic SwiftEye

C-UAS

C-USV

Perimeter Surveillance



## See What Others Miss

Eoptic partnered with the U.S. Air Force to develop SwiftEye — a rugged, AI sensing system designed for rapid deployment that clearly differentiates between distractors and threats in cluttered environments across air, land, and maritime domains.

### Autonomous

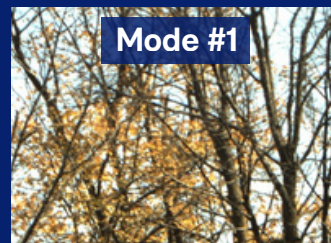
The complete system is operational within approximately five minutes by a single operator. Onboard processing happens at the sensor.

### Accurate

Powered by Eoptic Cambrian® technology, SwiftEye fuses multiple imaging modalities at the pixel level, onboard, in real time. The result is high-confidence classification in chaotic environments where single-band systems struggle to identify targets.

EOPHTIC

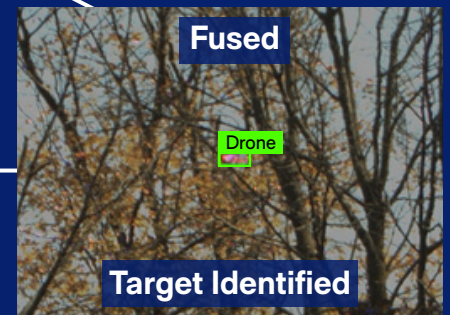
## SwiftEye in Action



+



+



Target Identified

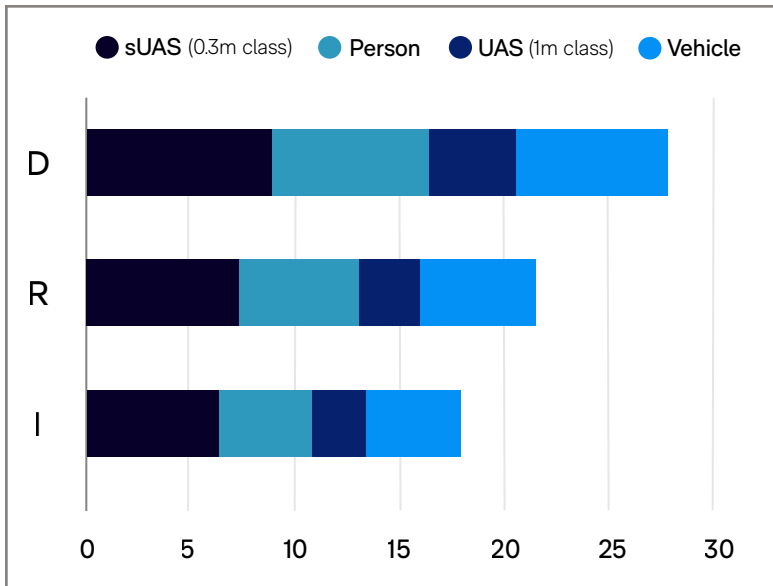
*Mode = VIS, SWIR, Polarization, event sensor, etc.*

A drone hidden in the treeline — while nearly invisible in any single modality, it is clearly visible and identified with Eoptic SwiftEye.

Onboard Software	
Compute	NVIDIA Jetson AGX Orin
Onboard AI	Multimodal AI with Tracking and Classification (30 fps)
Standard Integrations	SAPIENT, Medusa, Lattice, ROS, MQTT (Custom Available)
Standards Compliance	MOSA

Options	
<b>Laser Range Finder (LRF)</b>	
Max Range	10km
Accuracy	0.75m
Safety Rating	Class 1 (Eye Safe)
<b>Integrated Pan Tilt Unit (PTU)</b>	
Azimuth Range	360° continuous
Elevation Range	+90° to -70°
Slew Rate	0.005°/sec to 60°/sec
Slew-to-Cue	Via GPA and C2 (e.g. radar geolocation)

### Eoptic SwiftEye (VIS, 16kg)



SwiftEye range performance (km), calculated per Johnson criteria on a clear day. Contact Eoptic for mission-specific performance.



Imaging System	
Imaging Sensors	3 multimodal HD sensors
Field of View (Horizontal)	25.0° (wide) - 0.7° (narrow)
Zoom & Focus	Automated, C2 cue-driven

General	
Size	155 x 145 x 380 mm (155 x 300 x 580mm inc PTU)
Weight	9kg (15 kg inc. PTU)
Power	60W
Outdoor Rating	IP67
Interfaces	Ethernet

# EOP TIC

[Eoptic.com](https://eoptic.com)  
[info@eoptic.com](mailto:info@eoptic.com)  
(585) 441-0728



ISO 9001