



Huts & Decks WA
TRANSFORMING SPACES

Bonnie Bunkhouse

\$23900

**2.9 x 3.85m +
2.9 x 4.8m**



Discover the charm of our new Bonnie bunk house!

Bonnie offers a unique retreat & only needs a minimal footprint.

Built with sustainably sourced timber and eco-conscious materials, this cabin is as gentle on the environment as it is on your senses.

Features:

- High quality Nordic spruce timber (heat-treated)
- Engineered tongue and groove interlocking system for easy assembly
- Foundation timbers are impregnated with arsenic-free wood preservative
- Colonial style windows & doors
- Double doors & 4 x modern European-style windows
- 40mm wall thickness – naturally insulating & no need for internal lining

Included in your kit:

- Double glazed doors and windows
- Precut timber components
- Roof cover is a choice of asphalt shingle tiles or steel roofing
- Roofing insulation
- Hardware for doors and windows
- Fixings (nails, screws, etc)
- 18mm ceiling and flooring boards
- Sealer & Primer (to be applied after assembly)
- Rubber mallet
- Detailed instructions
- Delivery to site (within metro area)

Kit Building Info:

- Assembly by DIY or handyman, however we do recommend trade skills and good building knowledge background. (Or we can send out our friendly building team to do the job for you!)
- Timeframe – 4 to 7 days (min 2 person)
- Tools suggested
 - Hammer and Nail Punch.
 - Battery Drill.
 - Drill bits & Screw Bit.
 - Tape Measure
 - Level
 - Power Saw/hand saw.
 - Ladder.
 - Stanley Knife.
 - Paint to seal and finish.
 - Tin Snips
 - Rivet gun

Please Note: You will need either to be an approved owner-builder or use a registered builder to install this cabin.

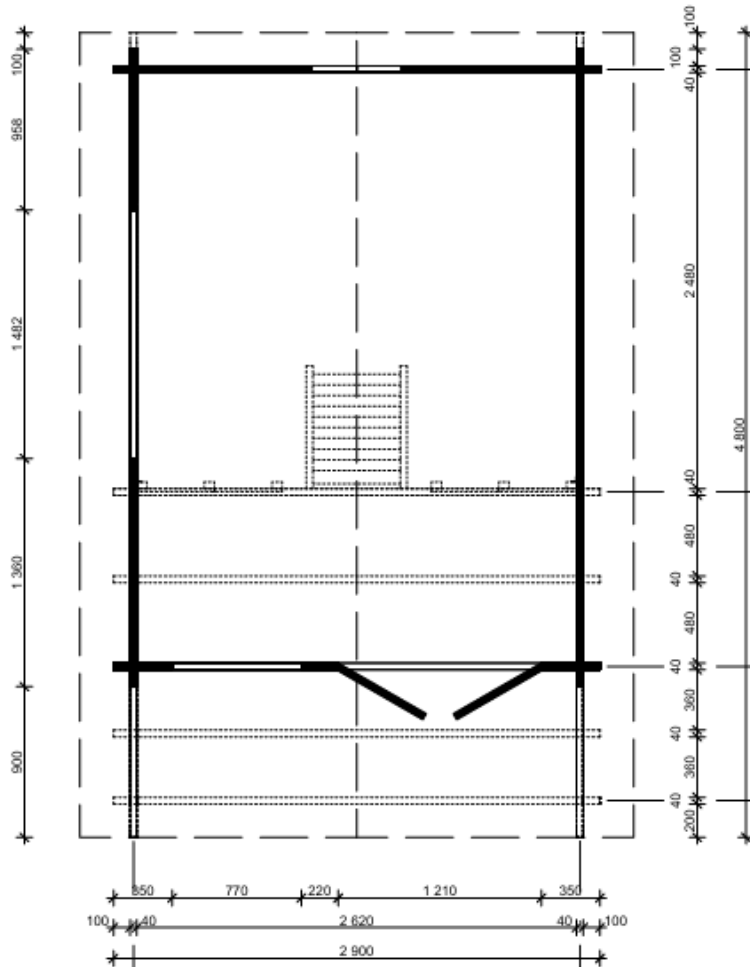


Huts & Decks WA
TRANSFORMING SPACES

Bonnie Bunkhouse

\$23900

**2.9 x 3.85m +
2.9 x 4.8m**



Specifications:

External Board Dimensions (W x D):	2.9m x 3.85m
External Wall Dimensions (W x D):	2.7m x 3.6m
Floor surface area:	9.2 + 4.8m ²
Wall thickness:	40 mm
Roof pitch	39 °
Side wall height:	294 cm
Ridge Height:	399 cm
Roof surface area:	19m ²
Roof and floor board thickness:	18 mm
Double glazed window sizes:	765mm x 990mm 1472mm x 990mm 2/530 x 530mm
Double glazed door size:	1200mm x 1955 mm
Kit weight:	1190 kg
Flat-packed kit size:	L 480 cm x W 108 cm x H 75 cm