



ECO DISCOVERY PROGRAM



GOVARDHAN ECOVILLAGE

Govardhan EcoVillage (GEV) is a UNEP,UNCBD,UNCCD ,ECOSOC- accredited NGO.

Collaborates with global sustainability and climate action networks.

HIGHLIGHTS OF GEV

WHO ARE WE?

Govardhan EcoVillage is a humble attempt to highlight the importance of living a life in harmony with nature and to create a model farm community. GEV's foundation rests on the timeless wisdom of 'Simple Living & High Thinking'

OUR COMMUNITY

Spreading over 100 acres, GEV today is a UN awarded Eco-Community making steady progress in diverse fields. GEV has successfully implemented a blend of both Vedic and modern techniques



WHAT WE OFFER?

A Hub of Experiential Learning for Students



1-day, 2-day & 3-day field trip options for schools & college students.



Over 20,000 plus students reached so far



Internship Program



Accommodation and food facilities available.

Engaging activities for students

FOCUS AREAS OF SUSTAINABILITY

1. ORGANIC FARMING



3. WATER CONSERVATION



5. ENERGY CONSERVATION



8. RURAL DEVELOPMENT



2. FOOD DISTRIBUTION



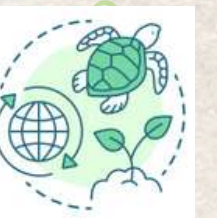
4. WASTE MANAGEMENT



6. GREEN BUILDING



7. BIODIVERSITY CONSERVATION



💧 WATER CONSERVATION

Rainwater Harvesting & Groundwater Recharge

Capacity 15 crore liters

Our rainwater harvesting ponds serve a dual purpose of groundwater recharge and water storage

By capturing and storing rainwater, we ensure a sustainable and reliable water supply while replenishing the local aquifers.



WASTE WATER MANAGEMENT

Soil Bio-Technology Plant

Nature-Based Solution for treating wastewater. All wastewater of GEV is treated, and o/p is fish-fit water- used as a resource for agriculture.



200 KLD capacity plant to treat Sewage water to usable agriculture water.

SOLID WASTE MANAGEMENT

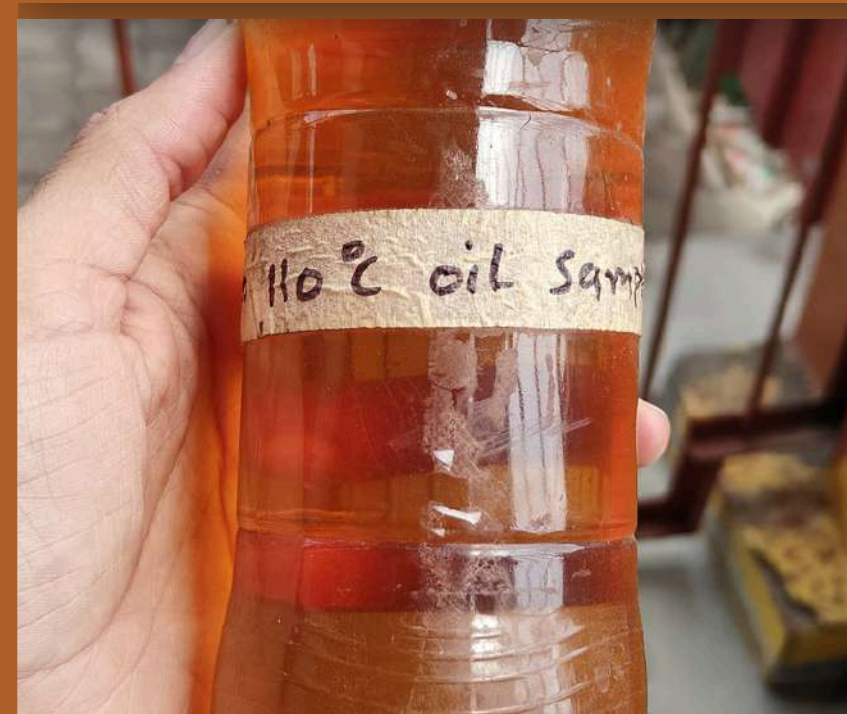


Organic Waste Composting Plant

Every day **300+ Kg** of Food and Vegetable Waste converts to Nutritious Compost.



SOLID WASTE MANAGEMENT



Plastic Pyrolysis Plant

This Plant Convert Plastic Waste into Oil, which is used to run the machineries and has a calorific value close to diesel.

⚡ ENERGY CONSERVATION



Solar Power Generation

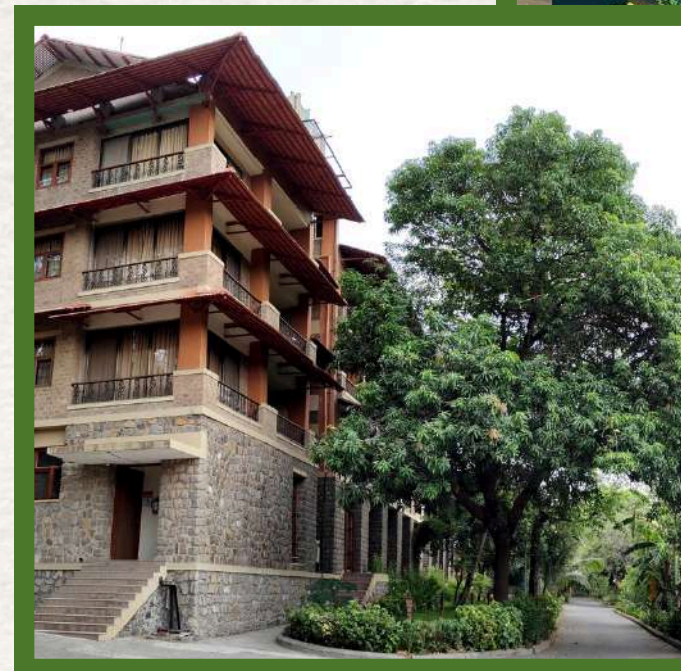
300 KW Solar Power Plant.

These solar installations significantly reduce our reliance on conventional energy sources and lower our carbon footprint

GREEN BUILDING 🏠

Eco-Construction

- This initiative showcases eco-friendly building practices that reduce carbon emissions.
- Received GRIHA- 5-star rating, IGBC Platinum rating for Green Building, UN Award.
- The mud block green buildings encompass an area of **289,600 sq. feet.**

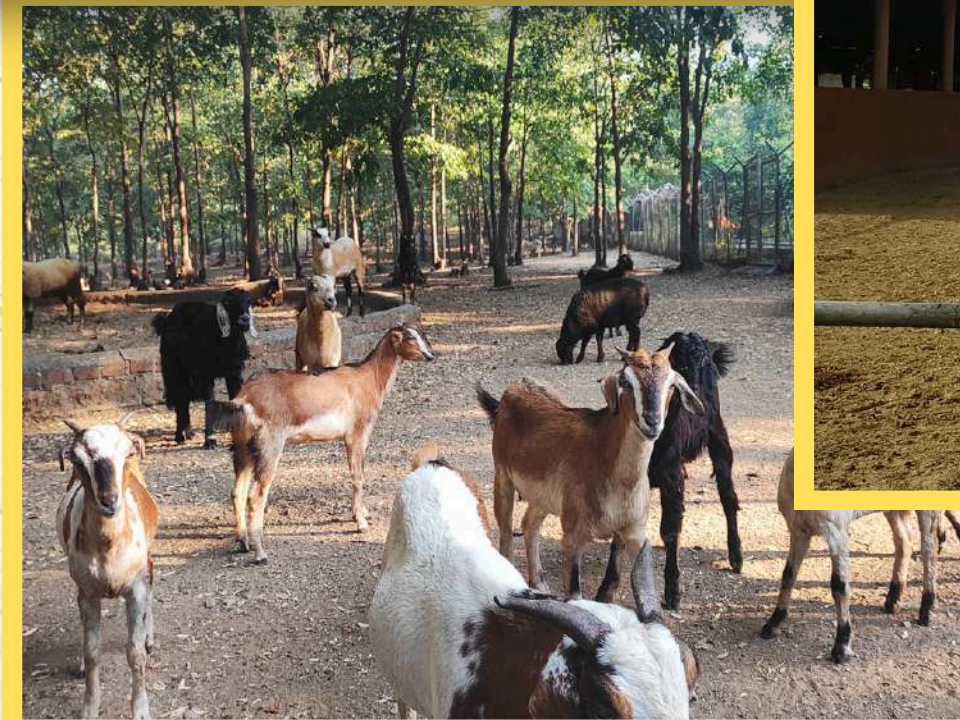


ANIMAL CARE



We provide a safe, caring shelter for horses, donkeys, and sheep, swans, ducks, goats, dogs. This initiative aims to promote animal welfare.

Govardhan Ecovillage (GEV) began in 2003 with 3 cows and now houses **110+** cows and bulls



BIODIVERSITY CONSERVATION



Govardhan Ecovillage (GEV) integrates culture, spirituality, and biodiversity through its 15-acre Vrindavan Forest, replicating the beauty of Vrindavan and featuring a recreated Yamuna River

We have **63+** Birds, **64+** Butterflies, **300+** identified plant species.





ORGANIC FARMING



Our organic farms utilize sustainable agricultural practices, use of 100 % natural in-house produced organic fertilizers, insecticides, and pesticides.

2000+ farmers are trained and helped for organic farming across 82 Villages.



FOOD DISTRIBUTION

Free full lunch Food (Prasadam) for Villagers and day Visitors.

Free meal Prasadam for rural areas in programs
(Across 40 + Villages)

5.6+ Lakhs Annakshetra full prasadam distributed (2022-23)



TYPES OF ACTIVITIES

CREATIVITY & UPCYCLING



NATURE & SUSTAINABILITY ACTIVITIES



MENTAL & TEAM ACTIVITIES



EMOTIONAL & REFLECTIVE ACTIVITIES



SERVICE-BASED ACTIVITIES



BONUS DEMONSTRATION



NATURE & SUSTAINABILITY ACTIVITIES



Compost Making (45 mins)

Learn to convert organic waste into compost—practical sustainability in action.

Bio-Enzyme Making (45 mins)

Create eco-friendly cleaners from fruit peels, jaggery, and water.

Plantation (60 mins)

Students plant a sapling and pledge to protect nature.

Trekking (6 to 8 Hrs)

Fun Climb To kahoj Fort

Pottery (45–60 mins)

Students shape clay into pots or diyas, learning patience and traditional craft.

Natural Dye Making (60–75 mins)

Hands-on session using flowers and natural mordants to dye cotton fabric.





Mud Block Making (45 mins)

Introduction to eco-construction using earth blocks.

Seed Ball Making (30 mins)

Eco-reforestation activity—students make and throw seed balls in open areas.

Organic Farming (60 mins)

Students engage in farm activities—sowing, weeding, and harvesting.

Diya Making (30 mins)

Crafting traditional lamps with clay to celebrate eco-friendly festivals.

Dhoop Making (30–45 mins)

Natural incense making using cow dung, herbs, and flowers.



NATURE & SUSTAINABILITY ACTIVITIES



Vermicomposting (30–45 mins)

Learn about composting with earthworms.

Solar Energy Demo (30 mins)

Discover how solar energy powers sustainable living.

Biodiversity Walk (60 mins)

Explore plants and their uses.

Cow Dung Log Making (30 mins)

Create logs used in eco-cremation, learning zero-waste principles.

Flower Plucking (30 mins)

Guided plucking of seasonal flowers used for natural dyes and other crafts.



CREATIVITY & UPCYCLING



Waste to Best (60 mins)

Transform waste materials into functional or decorative items.

Bag Making (45–60 mins)

Make and decorate reusable bags as an alternative to plastic.



Eco Mandala (30 mins)

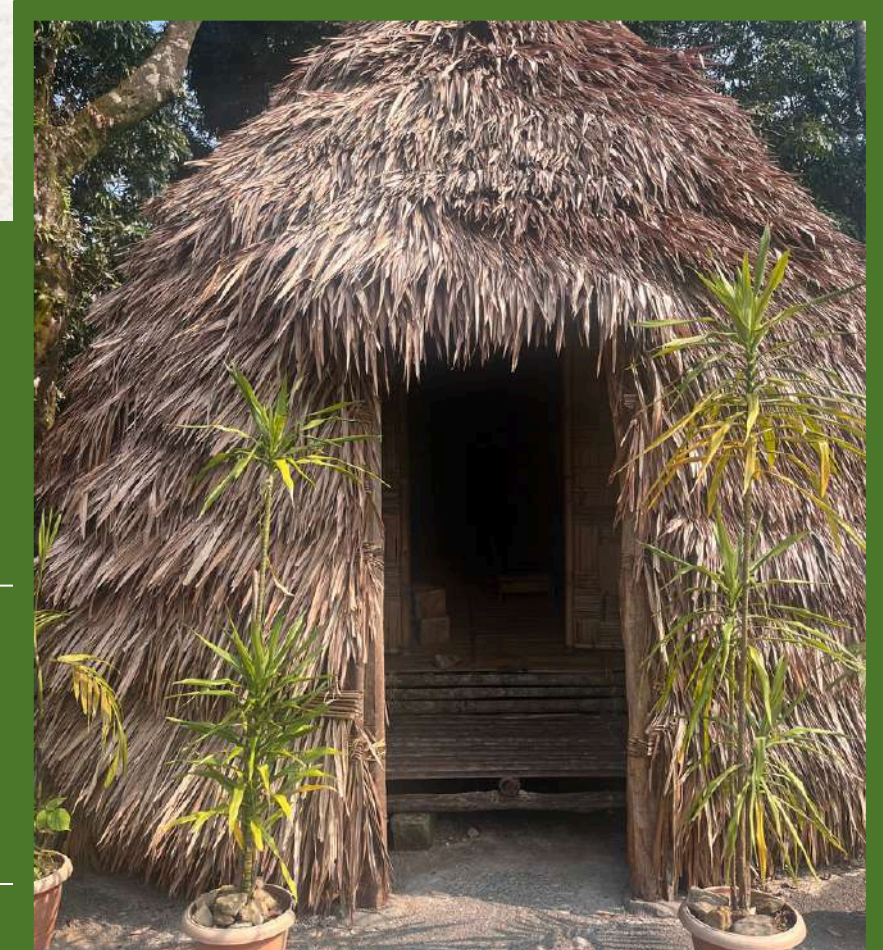
Use natural elements like petals and seeds to create mindful mandalas.

Warli/Folk Painting (60 mins)

Learn and practice traditional Indian art using natural colors.

Clay Idol Making (45 mins)

Create eco-friendly idols of Ganesha or Krishna from clay.



MENTAL & TEAM ACTIVITIES

Eco Hackathon (90–120 mins)

Work in teams to solve real sustainability problems using local.

Case Study Discussions (60 mins)

Analyze successful sustainable models as live case studies.

Quiz Competition (30–45 mins)

Teams compete in eco-themed trivia and problem-solving.

Treasure Hunt (45–60 mins)

Solve clues and explore GEV in a fun, team-based adventure.

Nature Bingo (30 mins)

Spot and match flora and fauna in an outdoor learning game.



EMOTIONAL & REFLECTIVE ACTIVITIES

IKS Reflection Circles (45 mins)

Discussion and journaling on Indian philosophies of sustainability

Design Thinking (60–75 mins)

Problem-solving with empathy and innovation for sustainability challenges.

River Reflection (30 mins)

Silent journaling by the river, fostering ecological consciousness.

Gratitude Circle (15–20 mins)

A quiet moment to reflect and express gratitude in a group.

Letter to Earth (30 mins)

Students express feelings and promises to Mother Earth.



SERVICE-BASED ACTIVITIES



Internship & Research Volunteering (2 weeks, 2-5month)

Opportunities for college and study abroad students to engage deeply in research, farming, ecology, education

Serving in Goshala (30-45 mins)

Feed and care for cows, cultivating empathy and responsibility.

Serving in Annakshetra (60 mins)

Help in the community kitchen—value humility and team spirit.

Service To Surroundings (30 mins)

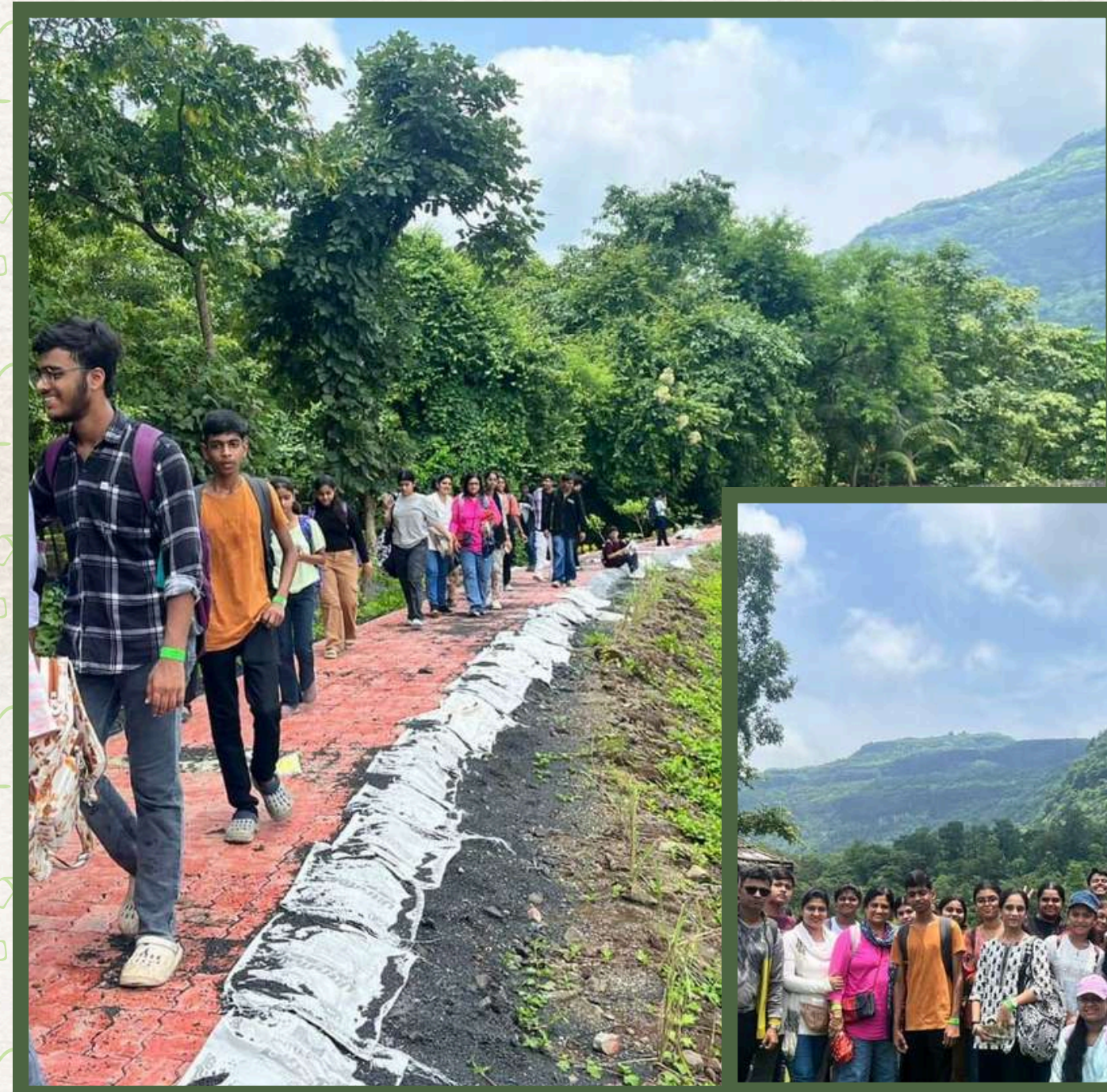
Participate in eco-cleanups to instill responsibility and hygiene.

BONUS DEMONSTRATION



IKS & Vedic Science Overview (60 mins)

Introduction to ancient Indian wisdom systems in agriculture, wellness, architecture, and ecology.



Climate Resilience Walk

Observe how nature is reacting to climate change through plants flowering, fruiting.



All programs combine experiential learning, value education, sustainability practices, and personal reflection.

Custom modules are available based on

Age group,
Curriculum goals, or
academic disciplines like
Environmental science,
Social entrepreneurship
Rural development,
Ayurveda,
Architecture



ACCOMMODATION OPTIONS

GOKUL COTTAGE

Double Occupancy Non-AC Room with
Attached Bath
Twin Separate Beds Garden View
Mountain View
High Speed Wi-Fi



MAHAVAN COTTAGE

Twin Separate Beds
Balcony View
Mountain View
High Speed

Wi-Fi
Air Conditioning
Small Room Heater
Private Bathroom
Electric Tea Kettle



MEAL OPTIONS

ANNAKSHETRA



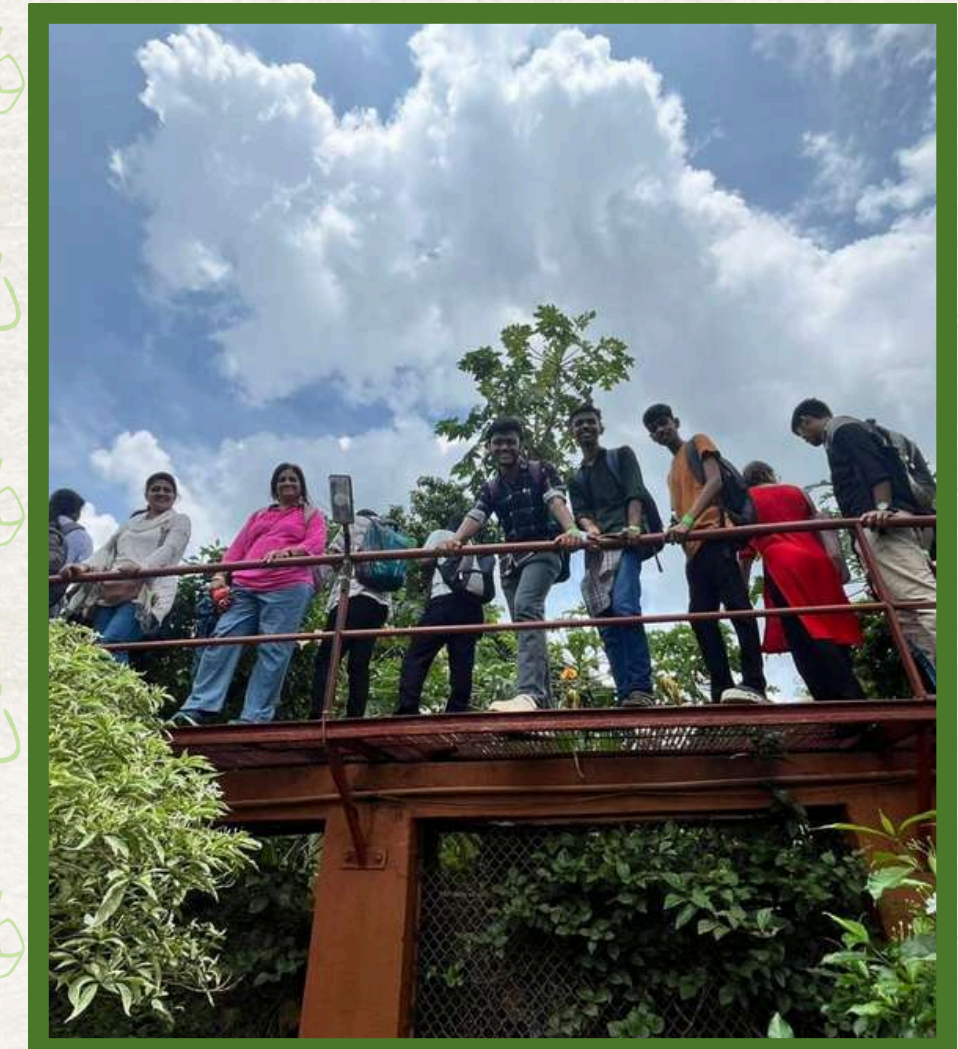
GOVINDA'S SHRINATHJI BHAVAN



GOVINDAS RESTAURANT

VISIT RECORDS

- UTAH VALLEY UNIVERSITY, USA
- CUNY UNIVERSITY, USA
- NOTRE DAME UNIVERSITY, USA
- IIT BOMBAY
- SARDAR PATEL COLLEGE OF ENGINEERING
- GOVERNMENT COLLEGE, MUMBAI
- BILLA BONG HIGH SCHOOL ,
- MAHIM SANE GURUJI VIDYA MANDIR, MUMBAI
- TRIDHA SCHOOL
- THE CATHEDRAL AND JOHN CONNON SCHOOL
- D G KHETAN INTERNATIONAL SCHOOL
- ECONOMIC CLUB HIGH SCHOOL, MUMBAI
- GOVERNMENT FISHERIES SCHOOL
- GOPAL'S GARDEN SCHOOL
- AVALON SCHOOL, VASAI
- PUNE INTERNATIONAL SCHOOL
- AND MANY MORE..





LET'S CONNECT

Scan to share your valuable Feedback!



We are here to serve you better!

Fill the feedback form and we will connect
you back



+91 92265 16929



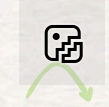
www.ecovillage.org.in



sustainability@ecovillage.org.in



govardhan_ecovillage



govardhan_ecovillage Govardhan



Ecovillage, wada