



GLENWOOD  
HEART

STUDENT  
ACCOMMODATION

GLENWOOD  
*heart*

[glenwoodheart.co.za](http://glenwoodheart.co.za)

HEARTLAND



# TABLE OF CONTENTS

---

*About .....03*

*Key Features .....04*

*Building Layout .....06*

*Units.....07*

*Floor Plans .....12*

*Points of Interest .....16*

*Virtual Reality .....17*

*Contact Details .....18*



# ABOUT GLENWOOD HEART CONVENIENT STUDENT LIVING IN LYNWOOD GLEN

## Attention Parents and Investors,

Exciting news awaits at 94 Glenwood Street in Pretoria - introducing the newest premium student accommodation spot tailored perfectly for students! With 23 units available, ranging from one-bedroom to spacious three-bedroom units, this opportunity is not to be missed.

Here's the game-changer - the location is unbeatable, just a 5-minute stroll from Varsity College. Imagine your tenant or child rolling out of bed and onto campus with ease!

The key investment attraction of this complex is that Heartland has joined forces with Digs Connect, the exclusive accommodation partners of Varsity College and neighbouring private colleges like Eduvos and Vega. This collaboration ensures that owners of Glenwood Heart are prioritised for any student accommodation needs that arise.

Whether you're seeking a safe haven for your children near campus or eyeing a lucrative investment opportunity, Glenwood Heart is the obvious choice while units are still available.





# KEY FEATURES



Owners are first in line with increased returns when listing units for rent with Digs Connect as the Exclusive Accommodation Partner with Varisty College and other colleges.



Highly secure compound with private security automation, smart access & advanced security features assisted with armed response.



Load shedding is a thing of the past. Glenwood Heart makes use of solar which allows residents to live uninterrupted.



Back-up water systems have been put in place to alleviate residents from the inconvenience of water shedding and area water disruptions.



Each unit is serviced with a fibre connection which provides High Speed Internet connectivity.



Smart access and advanced security features.



Equipped with a spacious indoor work and study area.



Developer discounts on additional appliances and upgrades, and no transfer costs are payable.









# BUILDING LAYOUT

**Ground Floor**  
Starting at R 1.775 Million

**First Floor**  
Starting at R 975 000

**Second Floor**  
Starting at R 975 000

**Third Floor**  
Starting at R 1.695 Million



Please visit [glenwoodheart.co.za](http://glenwoodheart.co.za) for the latest pricing.



## TYPE A

1 Bedroom

2 Beds

1 Bathroom

Unit Size: Up to 41 m<sup>2</sup>



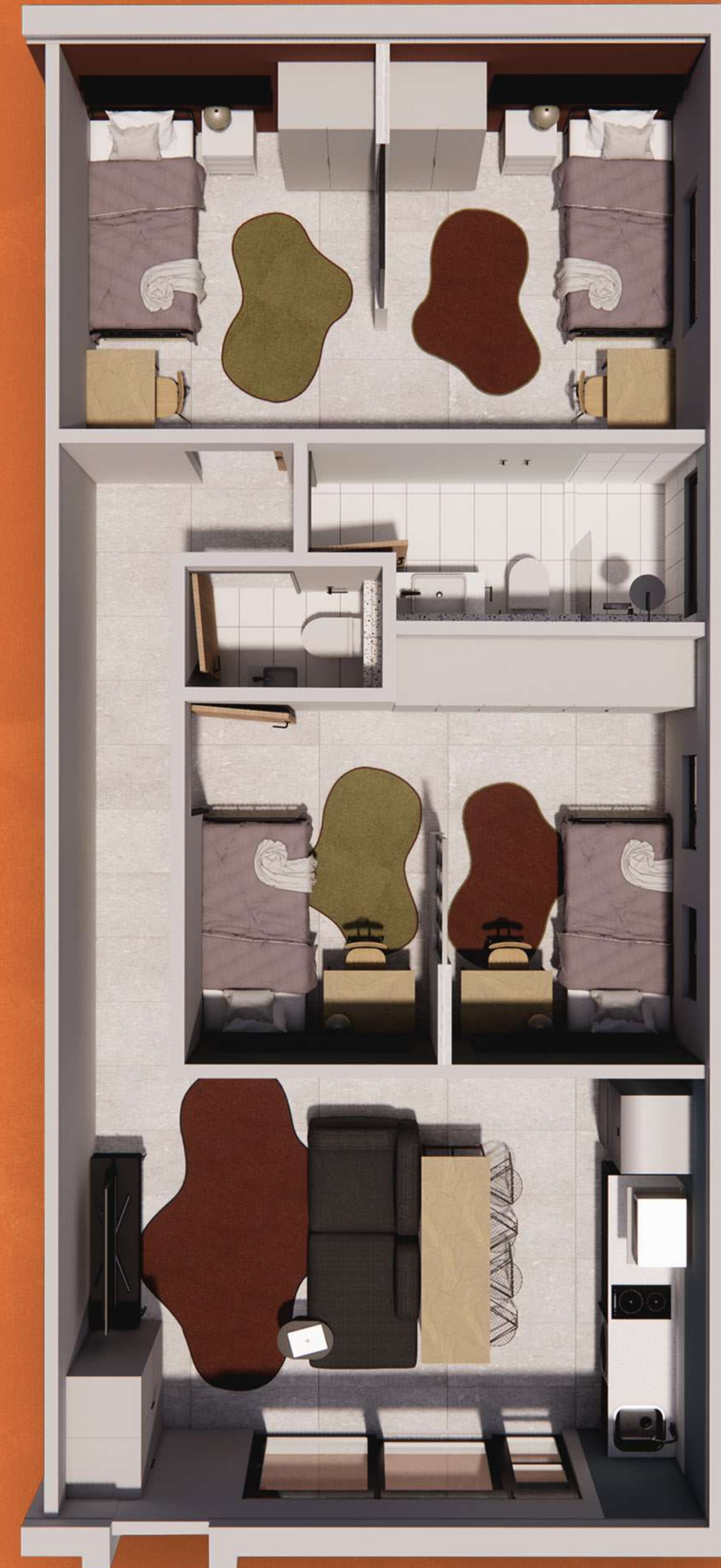
## TYPE B

2 Bedrooms

4 Beds

1.5 Bathrooms

Unit Size: Up to 65 m<sup>2</sup>



Please visit [glenwoodheart.co.za](http://glenwoodheart.co.za) for the latest pricing.



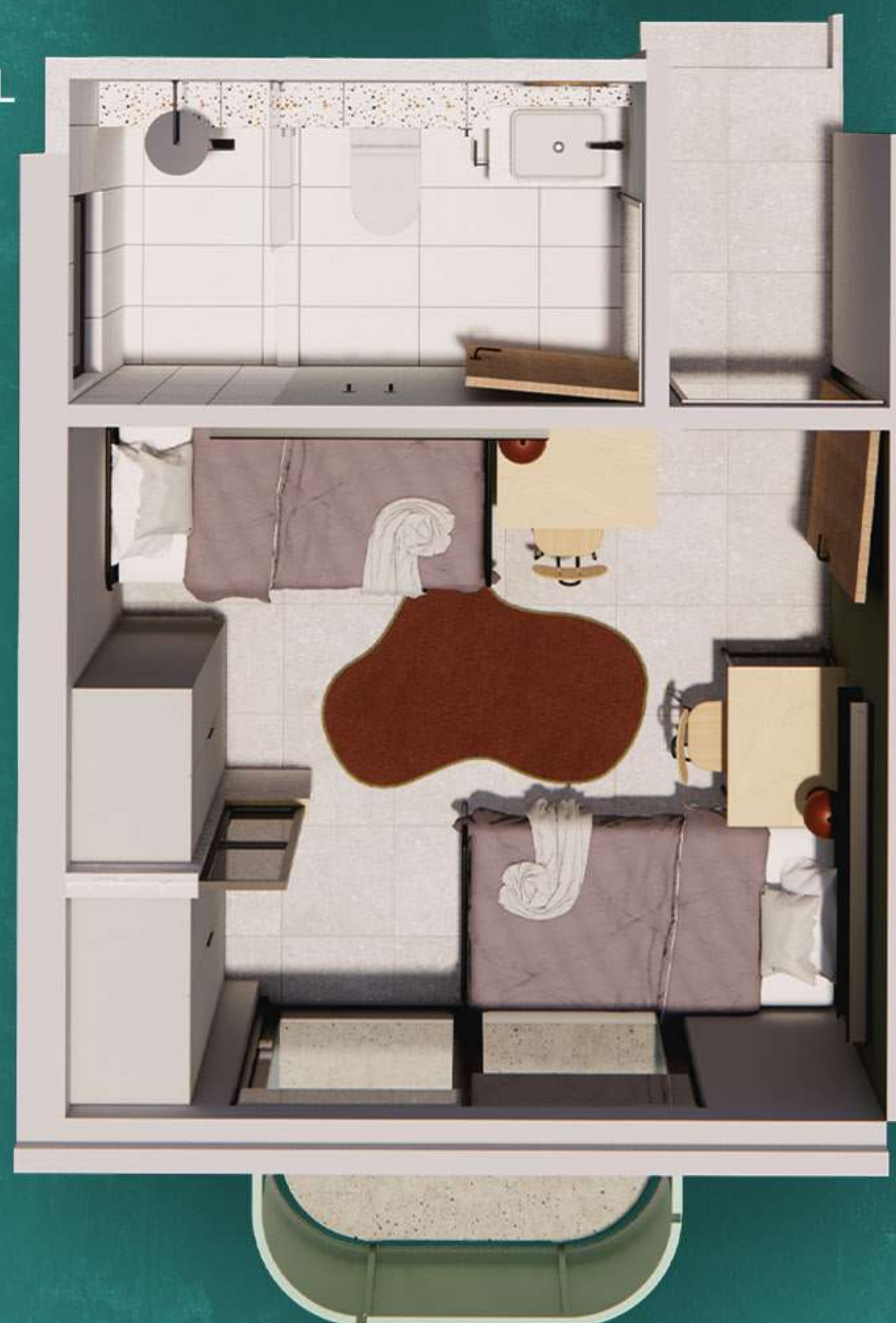
# TYPE C

1 Bedroom  
2 Beds  
1 Bathroom  
Unit Sizes: Up to 43 m<sup>2</sup>  
Private Balcony

LOWER LEVEL



UPPER LEVEL



LOWER LEVEL



# TYPE D

2 Bedrooms  
3 Beds  
2 Bathrooms  
Unit Size: Up to 60 m<sup>2</sup>  
Private Balcony

UPPER LEVEL



Please visit [glenwoodheart.co.za](http://glenwoodheart.co.za) for the latest pricing.



# TYPE E

3 Bedrooms  
6 Beds  
2.5 Bathrooms  
Unit Size: 77 m<sup>2</sup>  
Private Balcony

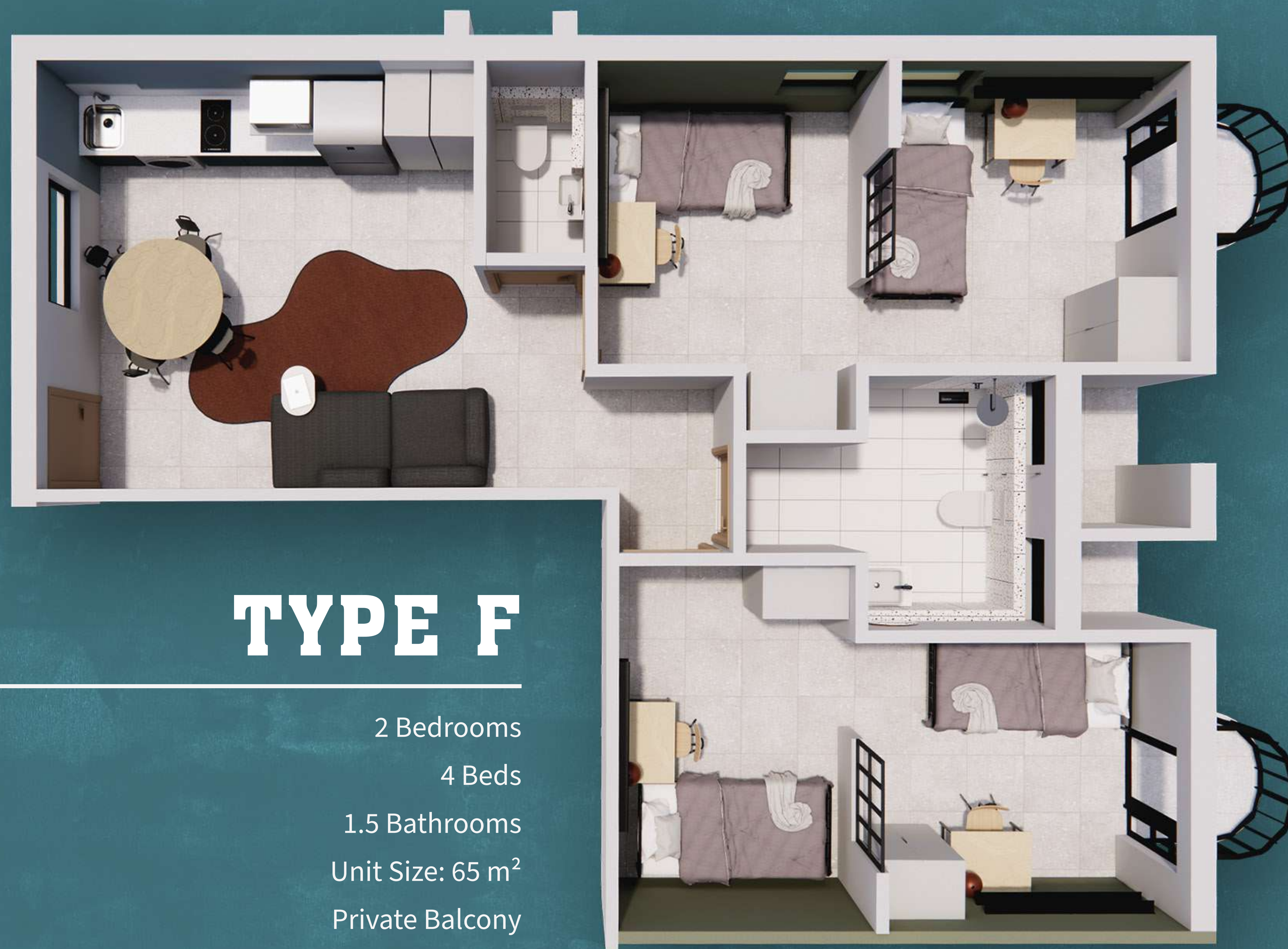


UPPER LEVEL

LOWER LEVEL

Please visit [glenwoodheart.co.za](https://glenwoodheart.co.za) for the latest pricing.









## TYPE H

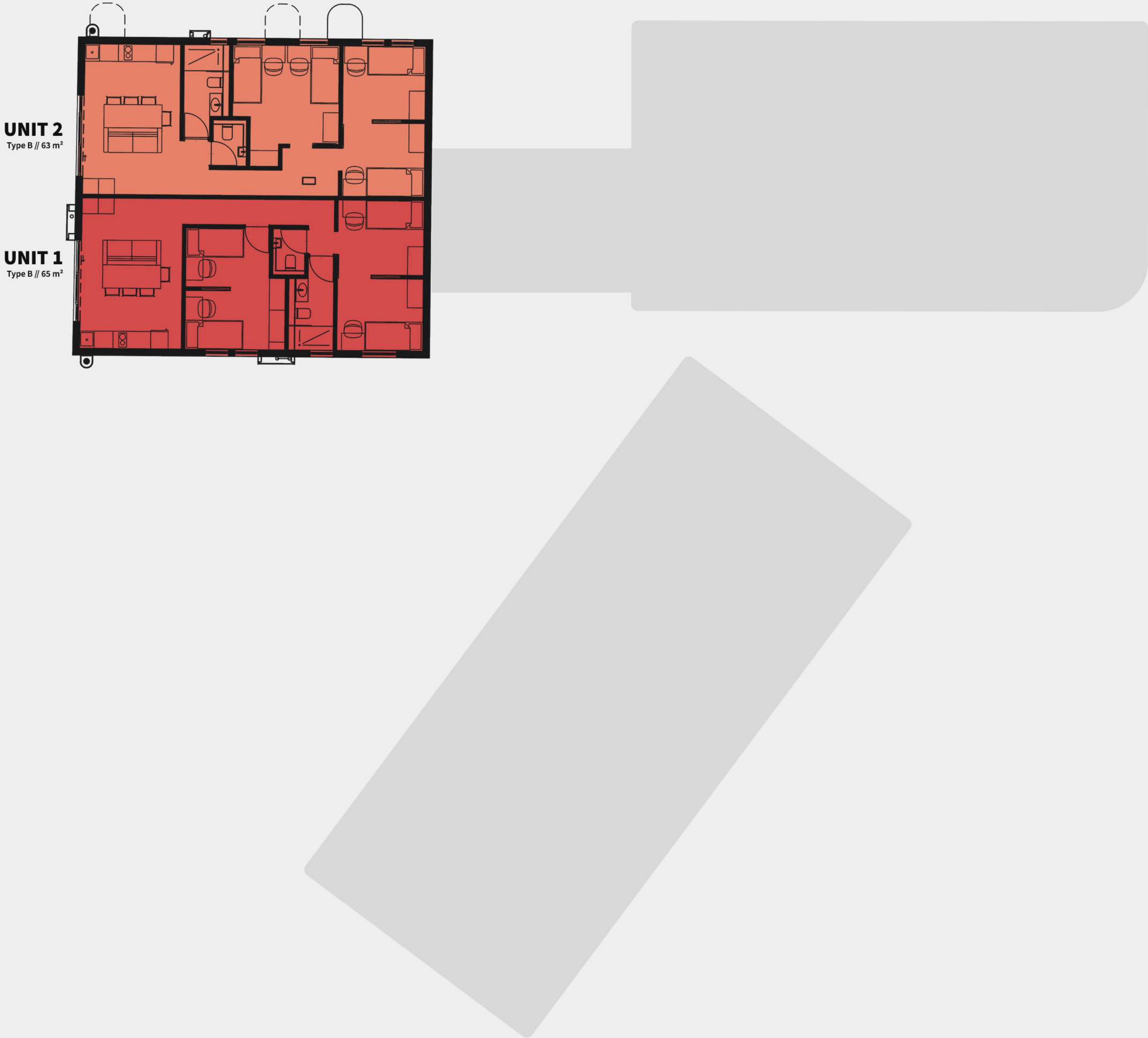
2 Bedrooms  
4 Beds  
2 Bathrooms  
Unit Size: 74 m<sup>2</sup>  
Private Balcony


Please visit [glenwoodheart.co.za](https://glenwoodheart.co.za) for the latest pricing.




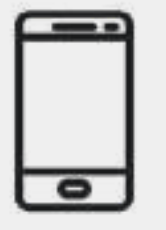
# FLOOR PLAN // GROUND FLOOR

Please visit [glenwoodheart.co.za](https://glenwoodheart.co.za) for the latest pricing.



 Custom furniture & interior packages available

 Appliance upgrade option available

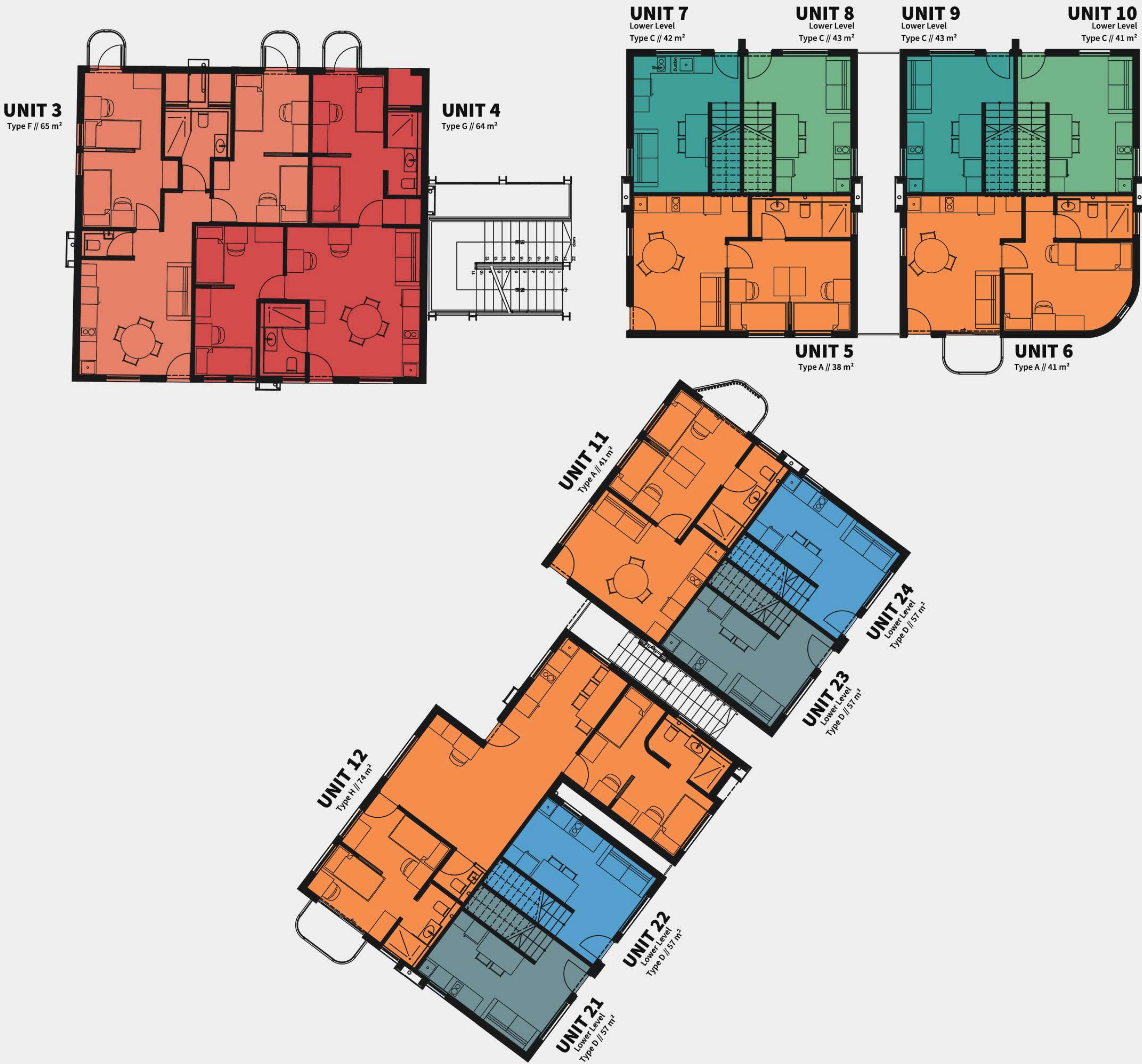
 Additional smart home capabilities with Yale





# FLOOR PLAN // FIRST FLOOR

Please visit [glenwoodheart.co.za](https://glenwoodheart.co.za) for the latest pricing.



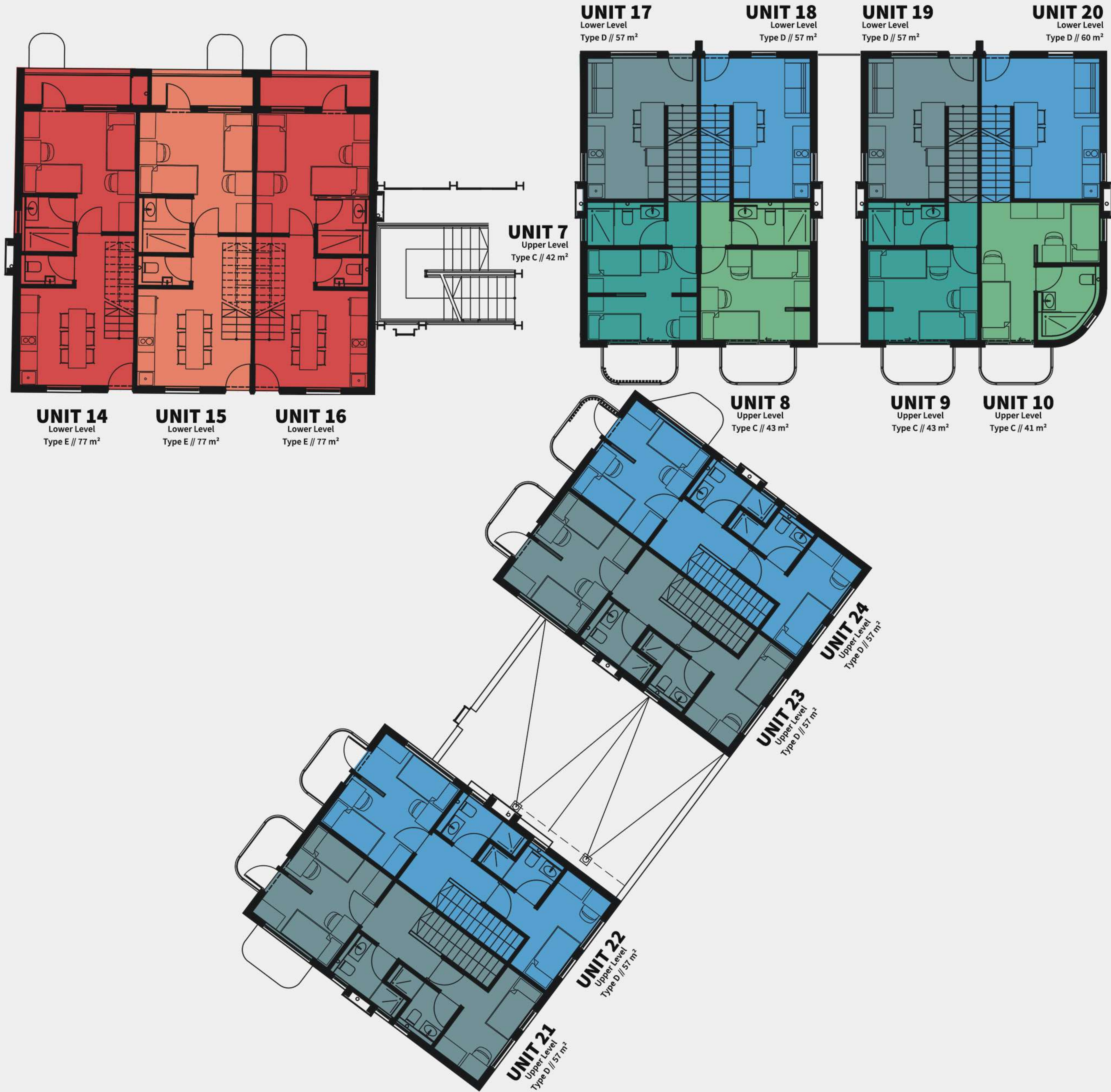
-  Custom furniture & interior packages available
-  Appliance upgrade option available
-  Additional smart home capabilities with Yale








# FLOOR PLAN // SECOND FLOOR

Please visit [glenwoodheart.co.za](https://glenwoodheart.co.za) for the latest pricing.



 Custom furniture & interior packages available

 Appliance upgrade option available

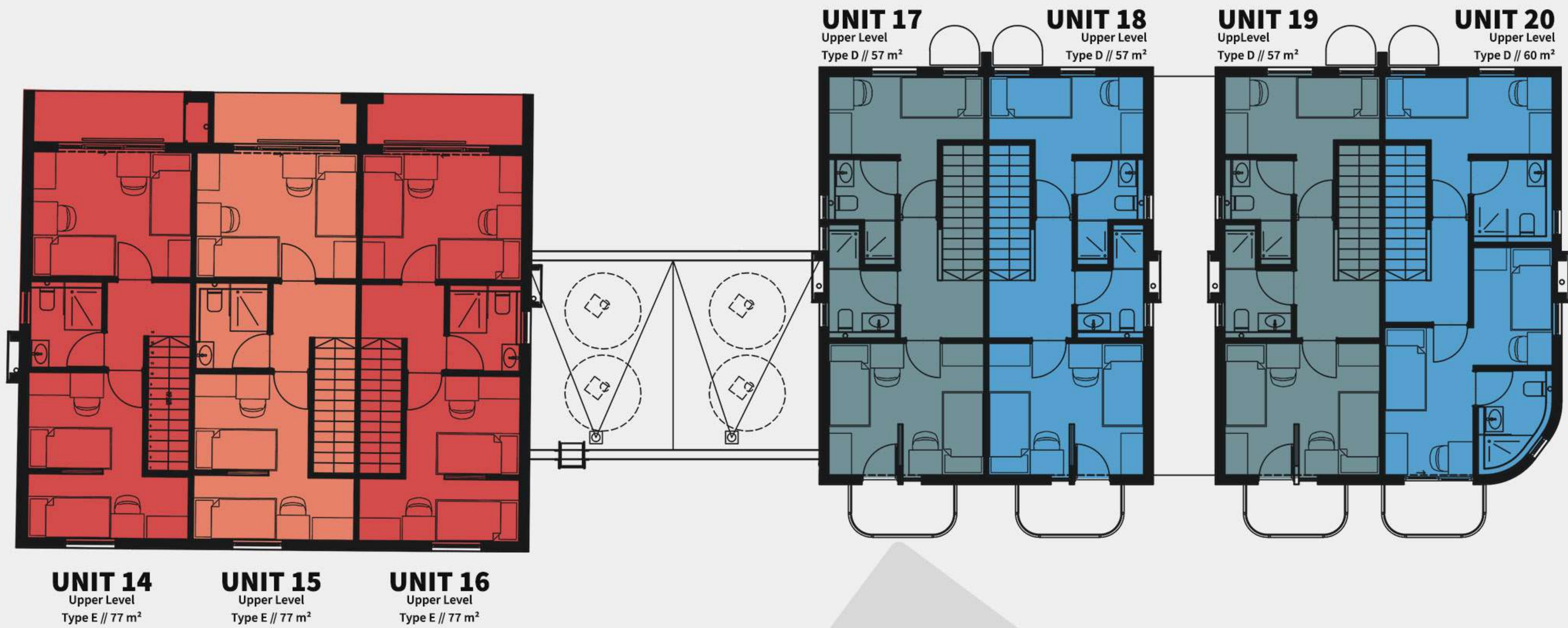
 Additional smart home capabilities with Yale








# FLOOR PLAN // THIRD FLOOR

Please visit [glenwoodheart.co.za](http://glenwoodheart.co.za) for the latest pricing.



 Custom furniture & interior packages available

 Appliance upgrade option available

 Additional smart home capabilities with Yale









# VIRTUAL REALITY



## BUY OFF-PLAN WITH CONFIDENCE

Our custom-built virtual reality interface allows potential buyers to interact with their future space.



# CONTACT DETAILS

**Tel:** 012 651 2251

**E-mail:** [property@heartland.co.za](mailto:property@heartland.co.za)

Office hours Monday – Friday 08:00 – 16:00

Viewings by Appointment Only

[glenwoodheart.co.za](http://glenwoodheart.co.za) | [heartland.co.za](http://heartland.co.za)

## OUR PARTNERS



## OUR TEAM

