

CLUB HEART

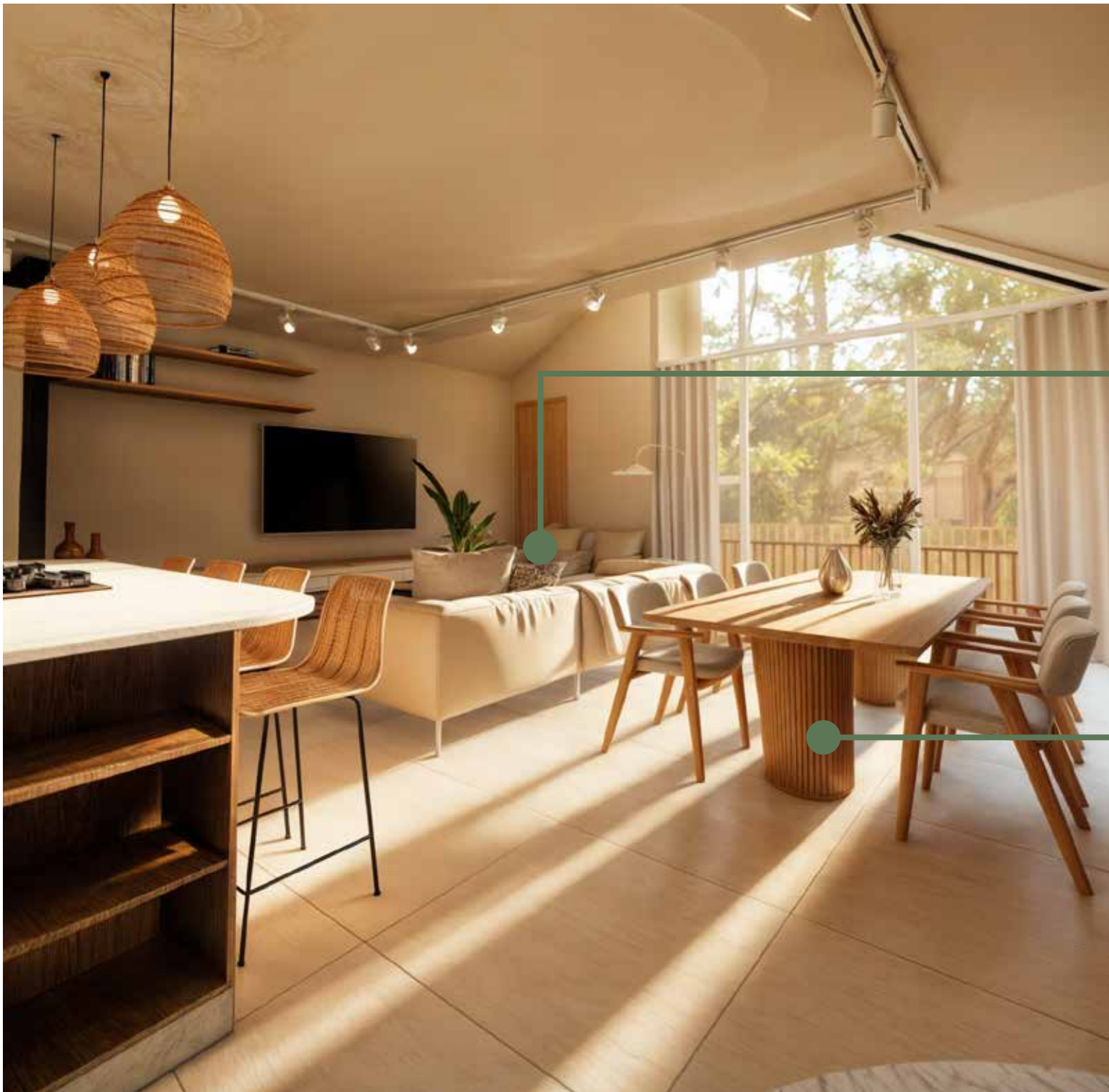
Furniture sizing guide



GUIDELINE BOOKLET

This booklet is a guide to help you choose furniture that optimizes your unit's space. Always check your unit for recommended furniture placement, type & size.

All images are conceptual interpretations of what the intended interior would represent.



LIVING AREA

A warm and open space flooded with light and neutral tones.

For the living room, consider a small **L-SHAPED OR THREE-SEATER** couch with two occasional chairs to fill your living room with tons of comfort. The maximum recommended couch size is **3m x 1m**, or an L-shape not exceeding **3m x 1.8m**.

A 6-8 seater **DINING TABLE** of a maximum of **2.4m x 1m** would fit snugly in the dining area.

Always refer to your unit for the recommended furniture placement and type.

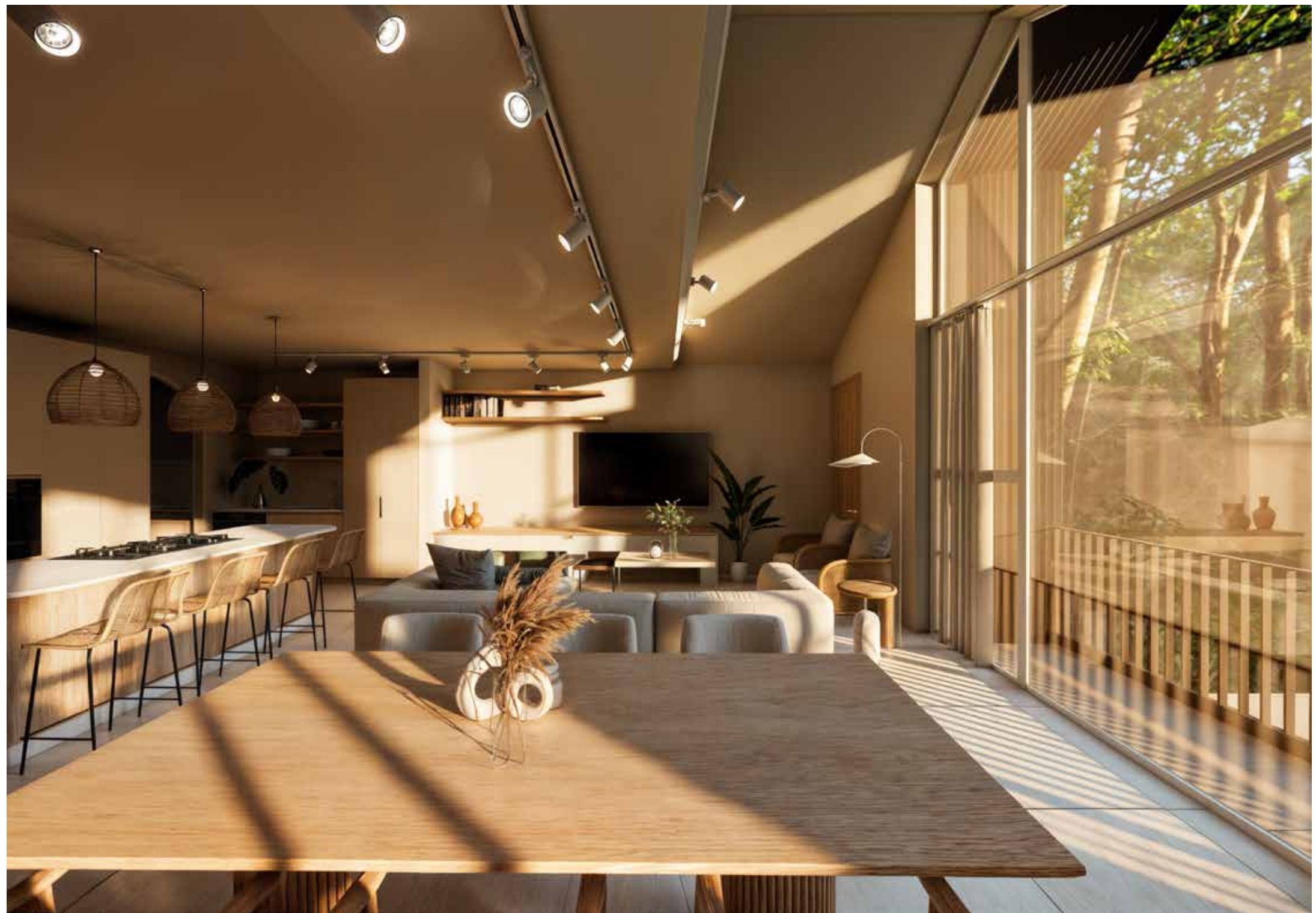


LIVING AREA

The living area allows for a show-stopper **MEDIA UNIT** of up to **3.4m x 0.6m**.

A **SLIM COFFEE TABLE** will suit the living area best or create a cluster of small coffee tables. The size recommended is **1.2m x 0.4m**.

Always refer to your unit for the recommended furniture placement and type.





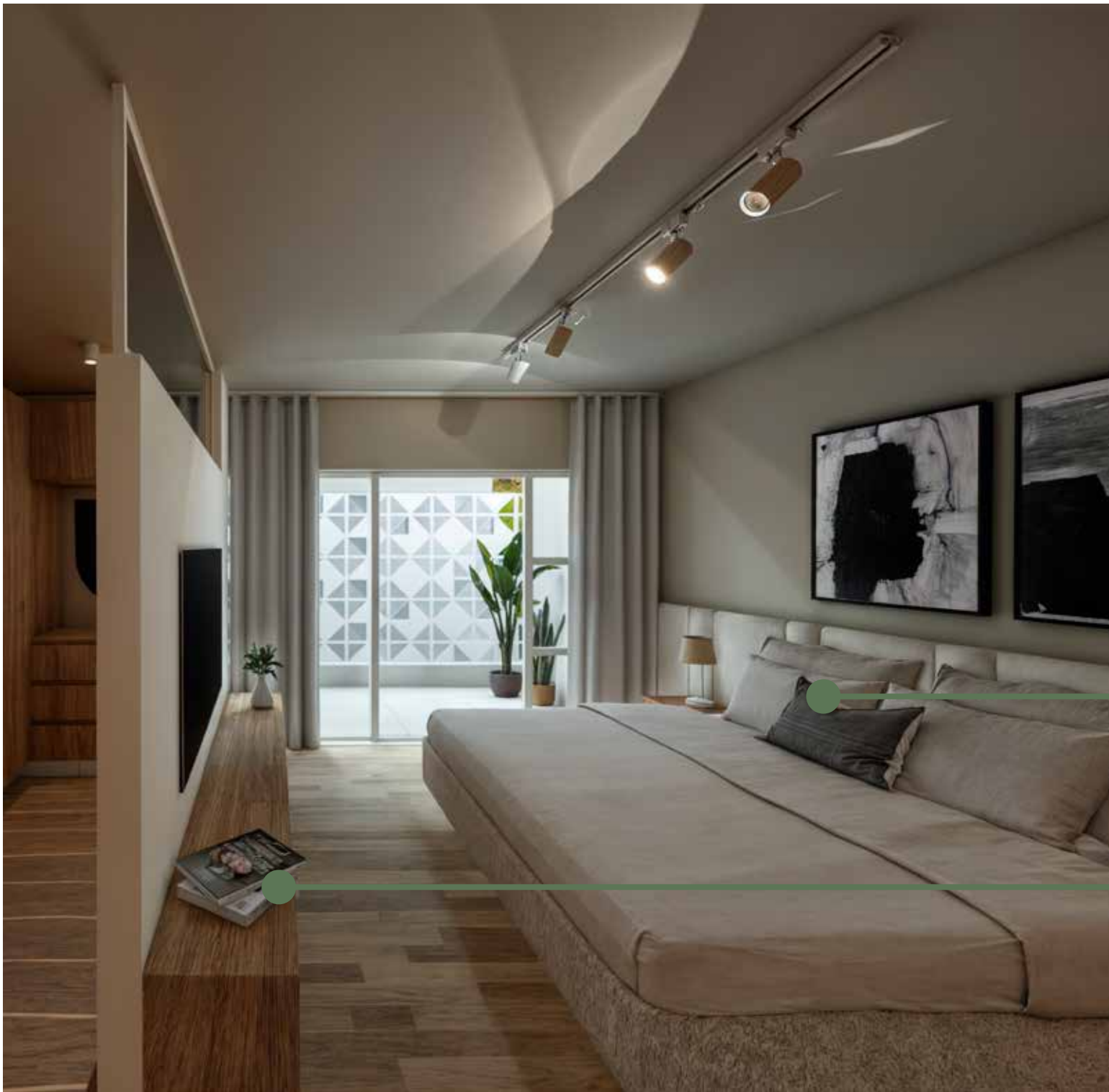
KITCHEN

With function and aesthetics in mind, the design aims to offer the best of both.

The 2.2m long kitchen island can fit four slim **BAR CHAIRS** not wider than **0.5m**.

Always refer to your unit for the recommended furniture placement and type.





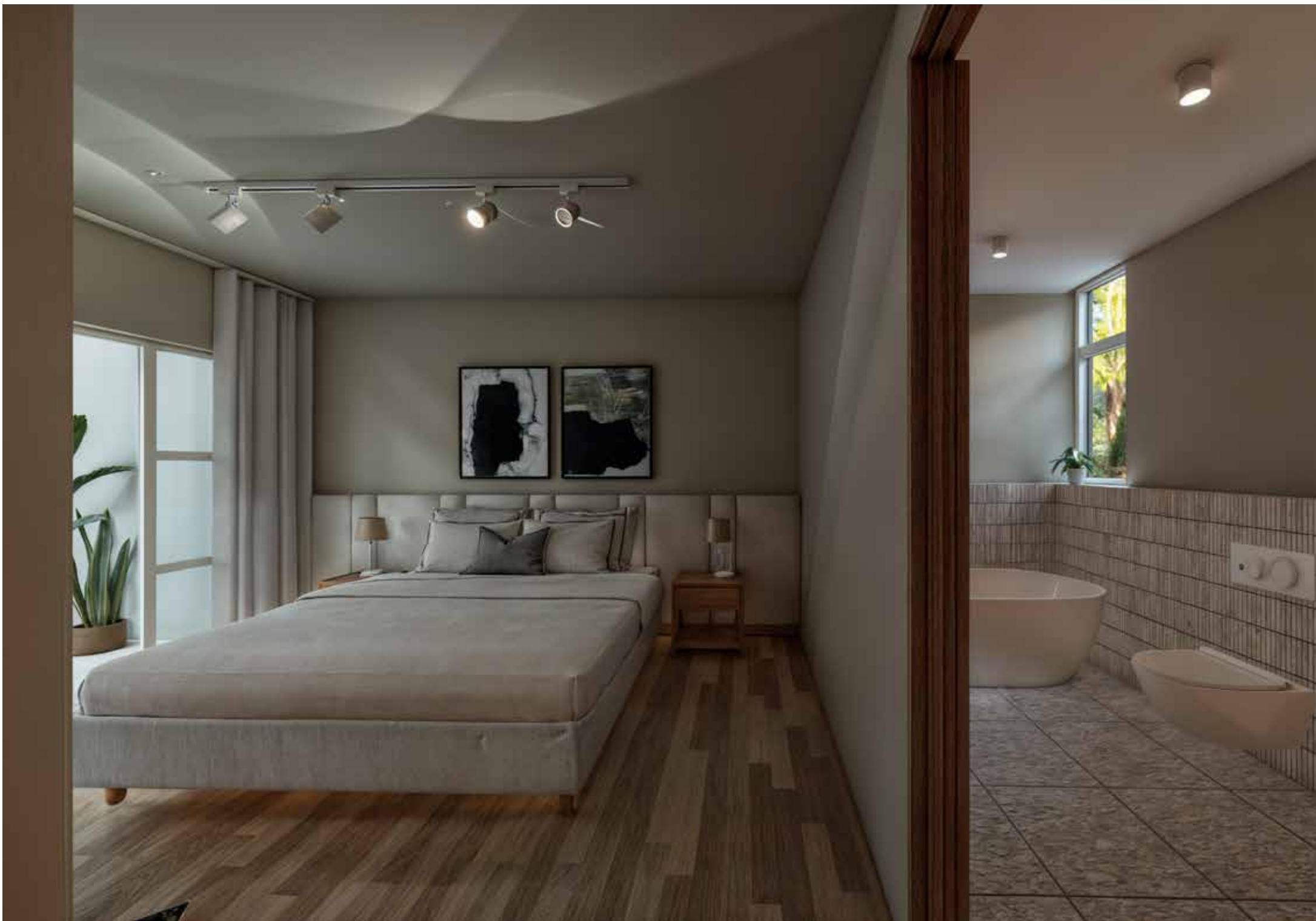
MAIN BEDROOM

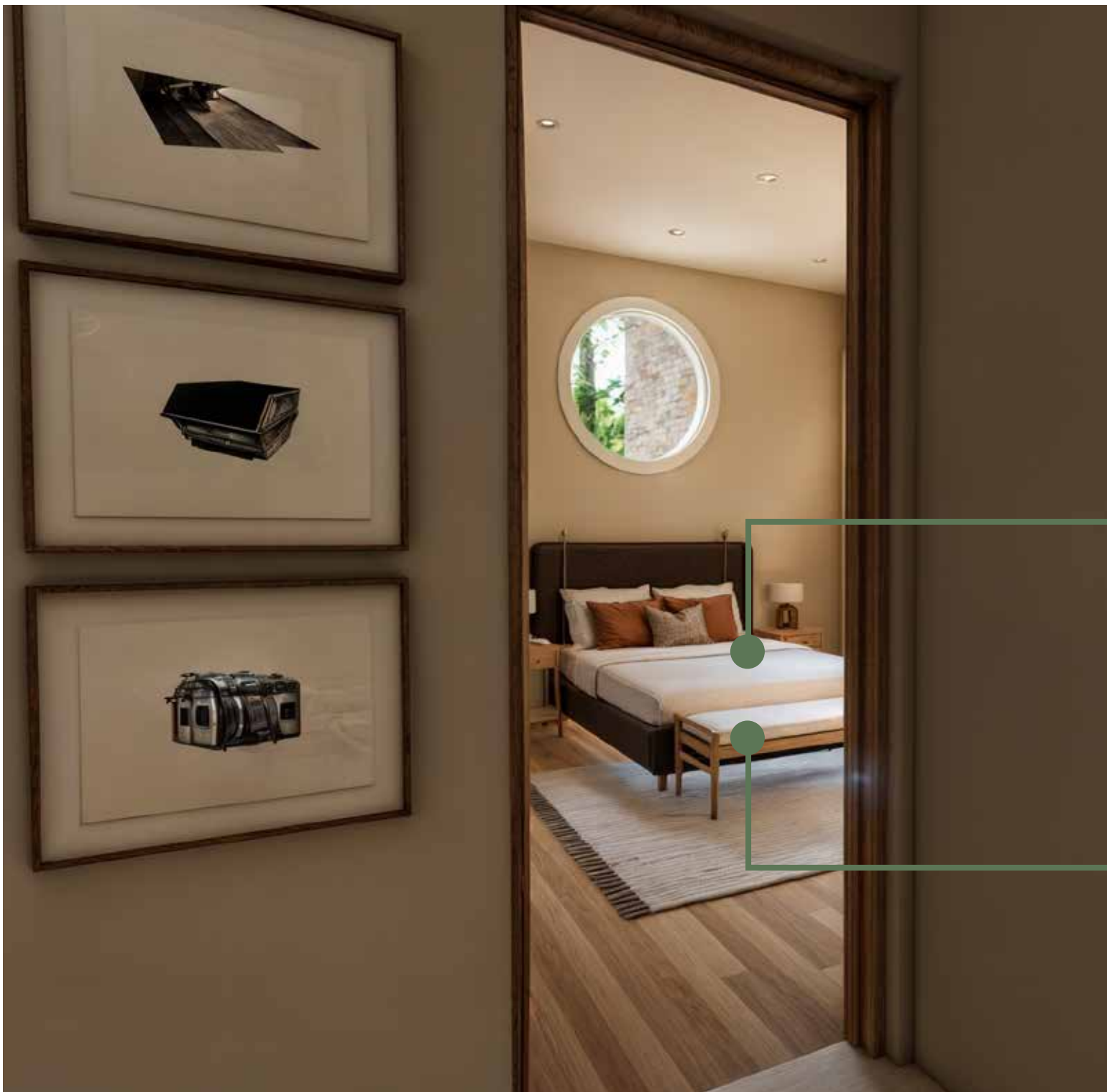
A cosy and light space waiting to be filled with soft textures.

All main bedrooms are designed to fit a **KING-SIZE BED** with extra length

You'll also be able to fit a **SLIM MEDIA** unit or **BENCH** at the foot of your bed. *Please note that the extra length bed + a media unit will make for a tighter movement zone at the foot of the bed.*

Always refer to your unit for the recommended furniture placement and type.





BEDROOM

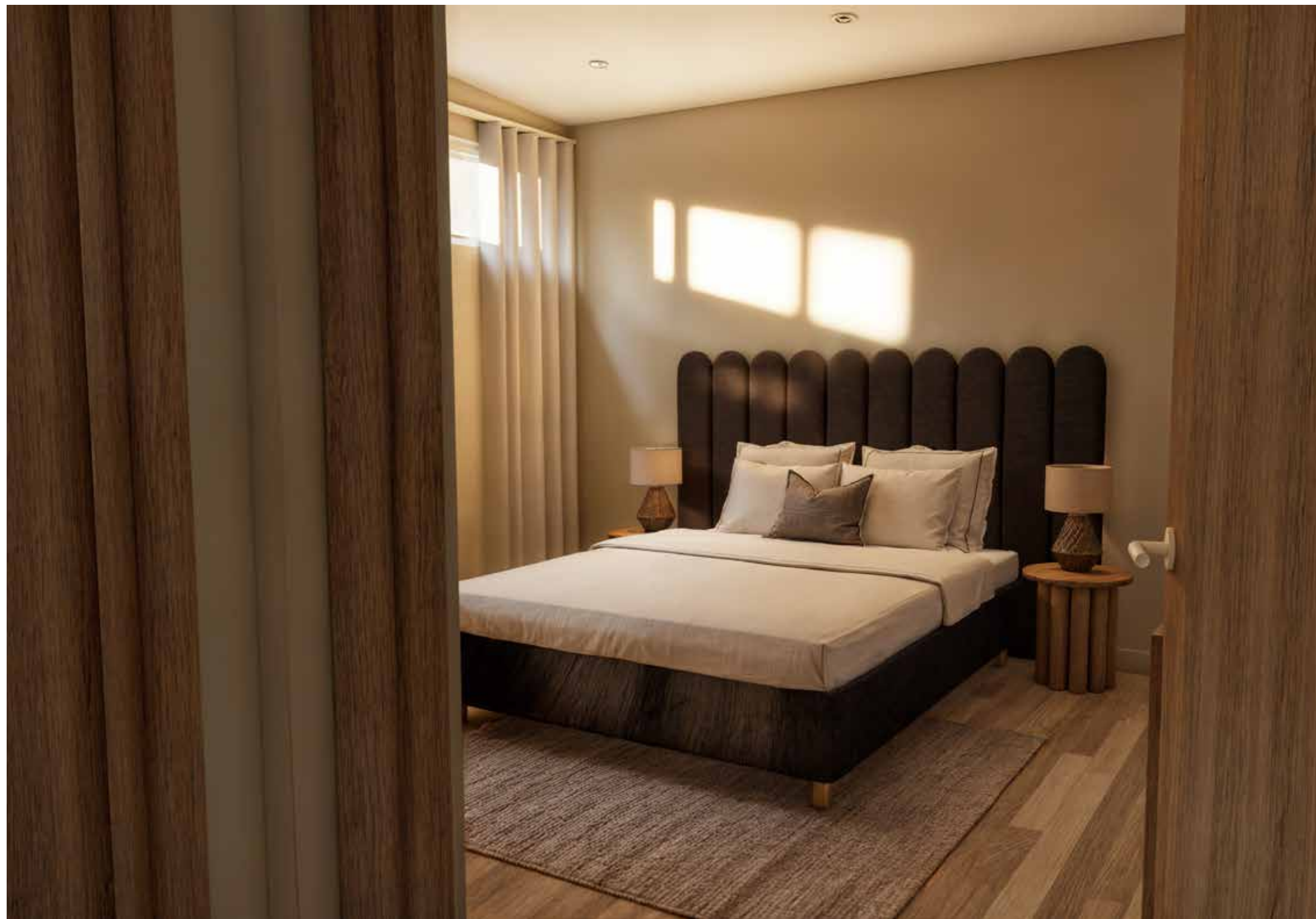
1 & 2

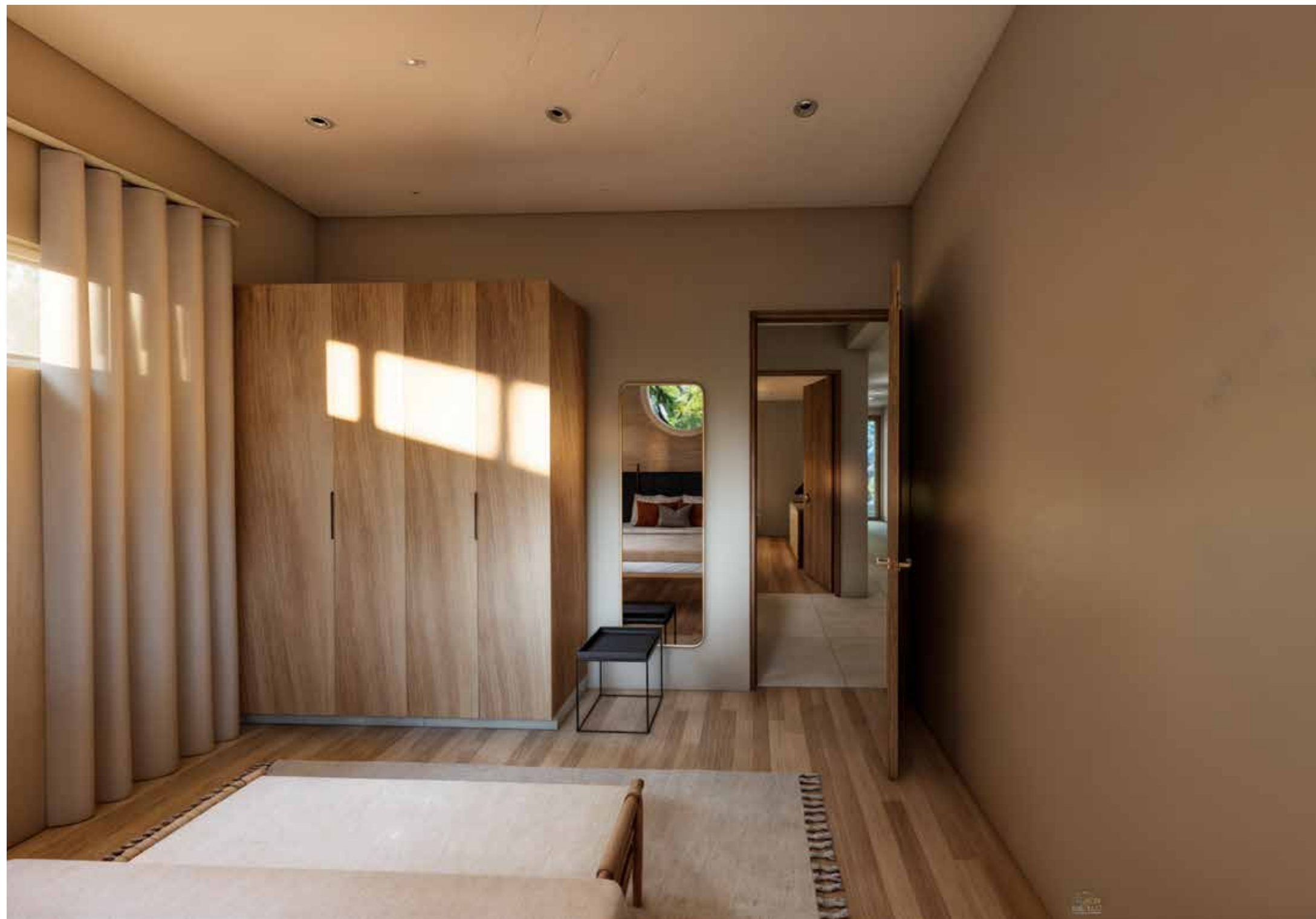
A spacious room that can easily adapt to be used as an office or nursery.

All guest bedrooms are design to fit a queen size bed with extra length.

Most bedrooms can also fit a **SLIM MEDIA UNIT** or **BENCH** at the foot of your bed or a **CHEST OF DRAWERS**. We recommend that the media unit, bench or chest of drawers should not be deeper than **0.5m**.

Always refer to your unit for the recommended furniture placement and type.





FIN.

