

ELEVATING THE ART OF LIVING

ANTONIOMATRES.COM

LUXURY ARCHITECTURE & INTERIORS

STILLNESS
in FORM

by antonio matrēs

NEW YORK

MADRID



an+tonio ma+trēs

ELEVATING THE ART OF LIVING



HOMES of QUIET POWER

NEW YORK

MADRID

AVAILABLE

WORLDWIDE

Prologue

Where legacy meets presence. Where homes are more than shelter, but vessels of memory. Where architecture speaks in whispers, and design lingers long after first sight.

Antonio Matrês Design creates residences for a global life—quiet, enduring, deeply personal. With studios in New York and Madrid, the studio specializes in high-end residential projects that balance architectural clarity with poetic use of materials and a profound respect for heritage.

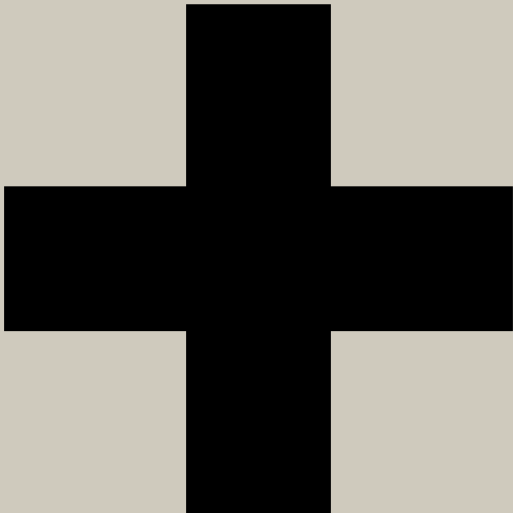
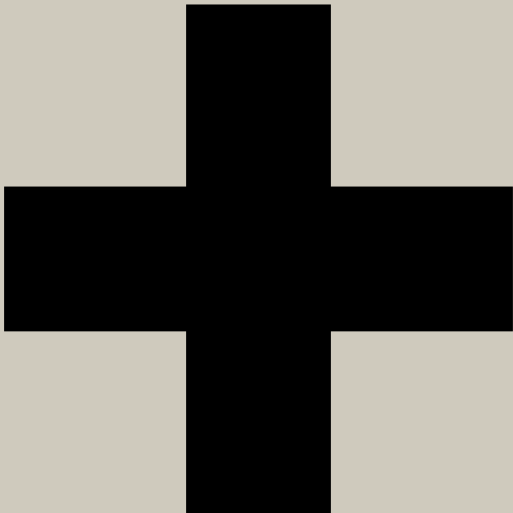
Discreet by nature and founder-led by Antonio Matrês, the studio works with collectors, global families, and cultural founders across continents—delivering bespoke architecture, interiors, and art curation with a white-glove process that is as seamless as it is soulful.

*“You can design to impress,
but we design to endure.”*

— ANTONIO MATRÊS

01

Between
PLACES



DESIGNING *for a* LIFE
LIVED *across* BORDERS

Home is no longer bound to one geography. For many of our clients-entrepreneurs, families, collectors, cultural leaders—life is lived across continents, time zones, and languages. These shifts are not temporary; they are a rhythm. The challenge lies in creating spaces that carry them gracefully through transitions while remaining grounded in meaning.

Antonio Matrès Design responds to this global condition by crafting homes that act as anchors. Each project reflects the richness of a life lived between places, where architecture becomes a stabilizing presence—deeply rooted in local tradition yet attuned to contemporary life.

With studios in both New York and Madrid, our practice understands the tempo of two worlds: the craft-driven sensibility of Spain and the modern pace of Manhattan. This duality shapes everything we do, from restoring an Upper East Side co-op to designing a Balearic Island retreat. Our homes are more than backdrops; they are narratives—of migration, memory, and permanence.

*“The homes we design aren’t just for living.
They’re for remembering.”*

— ANTONIO MATRÈS

Paris New York London Madrid Baham



02 + *Ethos*

ROOTED *in craft*, INFORMED
by PLACE, BUILT *to* LAST

Every Antonio Matrès project begins with restraint and intention. We do not chase spectacle; we pursue resonance. Our work reveals itself slowly, not in the instant gratification of fashion but in the lived experience of daily rituals—how morning light falls across a wall, how a hand rests on the grain of wood, how silence can be shaped as carefully as sound.

We call this philosophy heritage-informed modernism: a design language that honors history and local craft while articulating it for a contemporary life. Our material palette is deliberate: natural stone, solid timbers, burnished metals, lime plasters, handmade textiles. These are materials that patina, shift, and breathe—becoming more beautiful with age, just as the architecture itself matures.

This is not a trend-driven practice. It is an architecture of presence: sensory, deliberate, and deeply personal. It acknowledges that homes are not inert spaces but living organisms, evolving alongside their inhabitants.

“The materials we use are alive. They patina, shift, breathe. Like the architecture itself, they are not static.”

They age with intention; reminding us that design is not trend-driven but an architecture of presence; deliberate, sensory, and deeply personal.”

— ANTONIO MATRÈS



03

A STUDIO *built on* TRUST

ROOTED *by* DESIGN.
COLLABORATIVE
by NATURE

The heart of our practice is trust. Our studio is intentionally small, working with only a handful of commissions each year. This ensures intimacy, founder-led involvement, and the kind of discretion our clients demand. Each home we design is treated not as a project, but as a legacy.

Our clientele includes collectors, global families, cultural founders, and entrepreneurs—individuals for whom architecture is a vessel of memory and inheritance. Many have entrusted us with multiple homes across different countries, returning to us as their lives unfold in new chapters and new geographies.

We also collaborate seamlessly with architects, developers, realtors, and family offices, understanding the nuances of cross-border construction, heritage restrictions, and logistical complexity. For real estate partners, our design work becomes a differentiator—positioning prime properties as timeless, turn-key residences that attract discerning buyers. For private clients, we serve as both guide and guardian, ensuring their vision is executed with rigor and subtlety.

“This trust underpins each home, whether in Manhattan, Madrid, or the Hamptons, shaping spaces that endure. Discretion is not a feature of our process. It is the foundation of our practice.”

— ANTONIO MATRÉS



04

A QUIET UNFOLDING,
SHAPED *by* INTENT
and INTUITION

Our process combines structure with sensitivity. It is carefully staged, yet flexible enough to allow for discovery and intuition. The goal is not only to deliver a home but to provide an experience that is discreet, intelligent, and deeply personal.

The WHITE
GLOVE
PROCESS

1

DISCOVERY
& VISION

Every commission begins with listening. We take time to understand how our clients live, move, and inhabit space: their daily rituals, cultural references, sensibilities, and long-term aspirations. Beyond functional requirements, we look for what is unspoken—the emotional anchors, the pace of life, the memories a home should hold. Design begins here, with identity, intention, and trust.

2

DESIGN
& CONCEPT
Development

From these conversations, a spatial narrative begins to take shape. We translate insights into layouts, material strategies, and bespoke architectural gestures, moving fluidly from hand sketches to study models, from moodboards to technical drawings. This phase defines the architecture of atmosphere—how light enters a room, how materials age, how proportion, texture, and silence coexist. It is where concept becomes direction.

3

PROCUREMENT
& EXECUTION

Our team oversees procurement, logistics, and on-site coordination with rigor and discretion. Working closely with contractors, craftsmen, and specialists—across cities and countries—we ensure that every layer of the project is executed with precision and care. Clients are intentionally shielded from complexity, experiencing only clarity, continuity, and the quiet unfolding of their home.

4

ART , STYLING,
& *final* TOUCHES

The final stage is often the most intimate. It is where a project becomes lived-in rather than completed: the placement of an heirloom piece, the commissioning of a site-specific artwork, the integration of a handmade object discovered along the way. These gestures bring soul and specificity to each space, allowing the home to feel personal, grounded, and quietly finished from the first day.

What we

05 OFFER

ARCHITECTURE

INTERIORS

CURATION

COORDINATION

Our practice offers full-scope design services, moving fluidly between architecture, interiors, and curation. Whether engaged from the earliest planning stages or invited to furnish an existing structure, we never decorate; we design holistically.

Bespoke
ARCHITECTURE
& INTERIORS

Private residences, legacy homes, retreats, pieds-à-terre, and collector apartments—newly built or meticulously restored.



TURNKEY
DESIGN *across*
CONTINENTS

With expertise across codes, cultures, and construction methods, we manage complex projects seamlessly across borders.



+

Private ART & OBJECT Curation

We collaborate with galleries, artisans, and collectors worldwide to source or commission works that root each home in meaning. Many of our projects also feature original works by Antonio Matrês himself. As a painter and maker, he often integrates one or more of his own pieces into the architecture or interiors, subtly enriching the narrative of the home without ever imposing it.

HERITAGE -INFORMED *Modernism*

Spaces born from climate, craft, and culture—
designed to evolve beautifully with age.





*“Every project carries
our signature expressed
by the client sense of style.”*

— ANTONIO MATRÈS

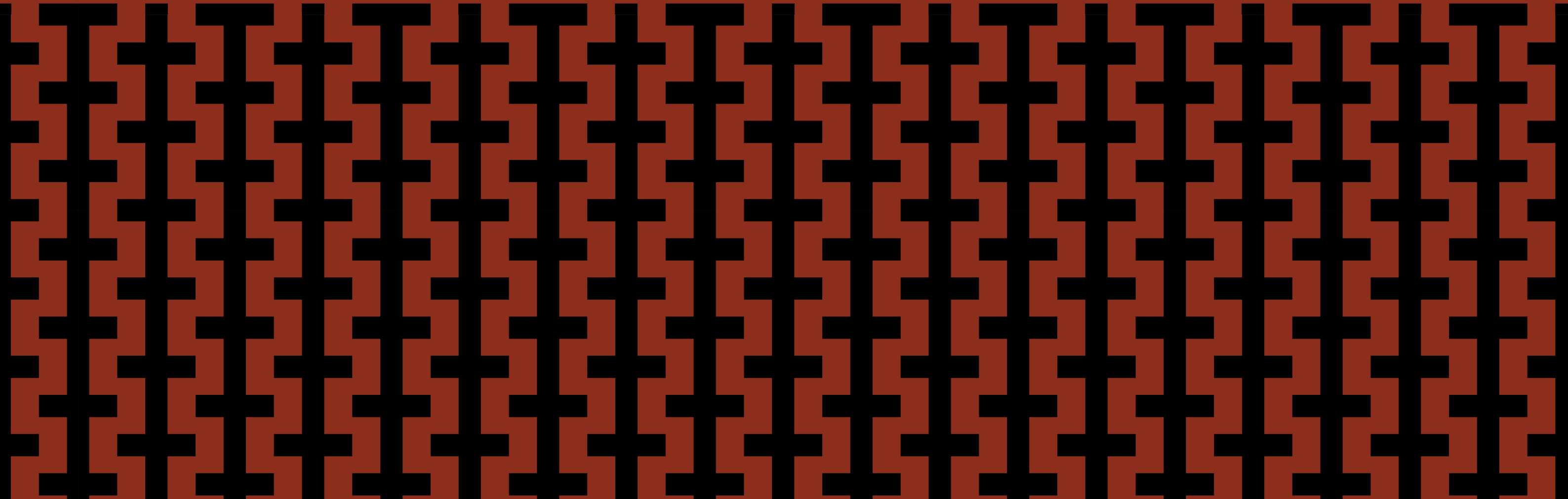
Founder-Led DISCRETION

Every commission is personally directed by Antonio Matrès, ensuring privacy, intimacy, and uncompromising detail.

06

Our portfolio is intentionally diverse, spanning climates and typologies, yet every Antonio Matrês project carries a quiet confidence: defined not by style, but by depth, proportion, and atmosphere. Each of these homes embodies our approach to presence, tactility, and the slow, deliberate accumulation of memory.

Signature
WORK



We are trusted for

C u l t u r a l
S E N S I V I T Y ,
quiet EXECUTION,
DESIGN *that*
SPEAKS *without*
S H O U T I N G .

Selected WORKS INCLUDE:

- A sculptural Hamptons retreat, organized around a central pool with four distinct kitchens for extended family and guests.
- A reimagined Upper East Side apartment, balancing inherited antiques with custom cabinetry and handmade textiles.
- A pied-à-terre in Madrid, designed around silence, light, and craft.
- A Bahamian colonial house, restored with humility, where vernacular architecture meets minimalist restraint.
- A Riverside Drive townhouse, preserving original detailing while reinterpreting it for a modern family.

Each of these homes is more than a design statement, it is a portrait of the people who live within. They are not about signature style, but about signature presence.

“We are not interested in signature style. We are interested in signature depth.”

— ANTONIO MATRÊS

Featured PROJECTS



PARK AVENUE

Custom oasis retreat

A MONUMENT
to QUIET ELEGANCE

“We weren’t interested in renovating for effect. We wanted to understand the apartment’s history and reveal what it could quietly become.”

On New York’s Park Avenue, Antonio Matrês Design transforms a prewar residence into a sanctuary of architectural call; where heritage meets sensual minimalism.

On Park Avenue, in the Upper East Side of Manhattan, Antonio Matrês Design reimagines a prewar apartment as a place of calm, warmth, and architectural continuity. The ambition was not to impose a new identity, but to refine what was already there; shaping a home that feels grounded, tactile, and deeply livable within the intensity of the city.

Rather than treating the project as a formal exercise, the studio approached it as an act of recalibration: adjusting proportion, flow, and material presence to support daily life over time.

From FRAGMENTATION
to SPATIAL ORDER



“We wanted the apartment to breathe,” explains Antonio Matrês. “To feel alive underfoot, to respond to touch, to reflect the people who live there.”



The original apartment suffered from a lack of balance. An oversized entry absorbed valuable square footage, while the kitchen felt compressed and disconnected from the living areas. The living-dining space was underscaled, and one bedroom—barely six square meters—was functionally unviable. Disparate flooring, visually dominant radiators, and a window blocked to accommodate a television further disrupted continuity.

The intervention began with a clear objective: restore hierarchy and coherence.

A new central atrium now anchors the apartment, organizing circulation and visual relationships. From this point, the kitchen, living room, and dining area unfold in dialogue. At its center, a floating, permeable storage element acts as a spatial mediator; dividing functions without enclosure, allowing light and movement to pass freely.

MATERIAL INTELLIGENCE

Material choices were guided by longevity, tactility, and restraint. Walls are finished in a warm sand-toned hue; bespoke millwork and built-ins are crafted in natural white oak; continuous oak flooring unifies the apartment. Stone and ceramic surfaces define bathrooms and kitchen areas with quiet weight.

Nothing is lacquered. Nothing is polished to excess. The apartment is designed to age gracefully, not to remain static.

Floor-to-ceiling doors incorporate the studio’s patented magnetic closing system, allowing transitions between rooms to feel precise and almost inaudible. Custom wall sconces, sculpted from solidified sand and designed specifically for the project, introduce a soft, sculptural light that complements the architecture rather than competing with it.

FURNITURE *as an* EXTENSION *of* ARCHITECTURE

Furnishings were selected to inhabit the space rather than decorate it. Low, tactile seating, curved forms, and carefully proportioned tables create environments that invite use and interaction. Each piece was chosen for how it feels, how it wears, and how it converses with the surrounding architecture.

Art is integrated with discretion: a forest-inspired chandelier by Jan Ernest, ceramics and tapestries by Victoria Yakusha, and works by the studio itself appear as part of the spatial rhythm, never as focal statements.

One of the project’s most considered interventions is the transformation of the smallest bedroom into a self-contained studio with its own entrance — offering independence to one family member while remaining fully connected to the home’s overall structure.



ARCHITECTURE DESIGNED *to be* LIVED IN

The result is not a showcase apartment, but a home calibrated for everyday life. Every element — from joinery and hardware to lighting and circulation — contributes to an atmosphere that feels composed yet relaxed.

Here, luxury is experienced through use: the warmth of oak underfoot, the density of a wall, the gentle resistance of a door, the way light shifts across a surface throughout the day. Tradition is not reproduced; it is distilled and quietly reinterpreted.



“Our goal is never to impress,” Matrēs reflects. “It’s to create spaces where living feels natural, unforced, and grounded.”



A PAUSE *above* *the CITY*



Amid Manhattan’s relentless pace, this Park Avenue apartment offers something rare: a sense of ease. It is a home that absorbs the city’s energy and returns calm in response — an architecture that supports life rather than competing with it.

Each decision was made with time in mind. Not to freeze the space at a moment, but to allow it to evolve alongside those who inhabit it.

A domestic interior shaped by clarity, care, and restraint; where architecture becomes a steady companion to everyday life.



The HAMPTONS

In the WOODS

A STUDY in STILLNESS

An elemental retreat by Antonio Matrês Design redefines coastal living in the Hamptons through geometry, restraint, and the quiet luxury of natural materials.

Set between open fields and the Atlantic in Amagansett, this Hamptons residence by Antonio Matrês Design rethinks the idea of the seasonal house. Rather than focusing on a single moment or mode of living, the project was conceived as a flexible framework; one that accommodates changing rhythms throughout the day, the year, and the life of an extended family.

The architecture does not perform for the landscape. It listens to it.



“This home was not conceived as a summer retreat, but as a place capable of shifting with time, weather, and use.”



+

ARCHITECTURE
as STRUCTURE
for USE

The house is organized as a series of interrelated volumes arranged around a central axis that connects interior and exterior life. From the outset, the brief was not about form alone, but about how the house would be used: repeatedly, differently, and simultaneously.

Concrete, white oak, and stone define a restrained material palette chosen for durability and tactility. These materials are left largely untreated, allowing them to respond naturally to light, climate, and time. The architecture is quiet, but the program is highly articulate.



FOUR KITCHENS, FOUR WAYS *of* LIVING

At the core of the project is an unusually deliberate approach to shared life. Rather than centralizing all activity into a single space, the house distributes it.

The residence contains four kitchens, each designed for a distinct moment and mode of gathering:

- An outdoor kitchen beside the pool, paired with a barbecue area, anchors long summer days and informal lunches.
- A rooftop kitchen serves evening events, where cooking, dining, and sunset views merge into a single experience.
- An indoor main kitchen, organized around warmth and fire, becomes the heart of the house during autumn and winter.
- A lower-level kitchen, adjacent to the cinema room and cocktail bar, supports nighttime entertaining and private gatherings.

Each kitchen is treated as architecture, not amenity; carefully proportioned, materially consistent, and integrated into the overall spatial rhythm of the house.

DESIGNED *for* *all* SEASONS

Unlike many coastal houses, this residence was never intended to be dormant outside summer. It is fully calibrated for year-round living.

Thermal mass, insulation, and orientation were studied to ensure comfort in colder months. Fireplaces, a heated pool, and a jacuzzi extend the use of outdoor areas into fall and winter. Stone floors, concrete surfaces, and wood retain warmth underfoot, while lighting and acoustics were tuned to create intimacy when daylight shortens.

The house adapts without changing character.



INTERIOR LIFE, *quietly* LAYERED

Inside, the spatial language remains consistent. White oak floors flow throughout the main living areas; walls are finished in soft, light-reactive tones; custom joinery defines rooms without enclosing them.

The residence includes five suites, each conceived as a private retreat with its own relationship to light, landscape, or exterior space. Even the smallest bedrooms were reworked to feel autonomous and generous — places to withdraw without disconnecting from the whole.

Furniture is minimal and tactile, composed of bespoke pieces and curated vintage elements that support use rather than statement.



A HOUSE *that* WORKS

More than an object, this Hamptons home functions as an inhabited system — capable of hosting large gatherings, accommodating parallel activities, and contracting into quiet domestic life when needed.

It is a house designed not around a single image, but around continuity.

“Luxury,” Matrês reflects, “is not about excess. It’s about having spaces that respond to the moment, to the season, to the people using them.”

In the woods of the Hamptons, architecture becomes infrastructure for living well: adaptable, grounded, and quietly precise.



GRAMERCY *Park*

PRIVATE WORLD
within the CITY

“Everyone recognizes the façade. But few have seen the actual apartment behind it; until now.”

Behind one of Manhattan’s most recognizable addresses, Antonio Matrês Design quietly reshaped a first-floor residence years before it appeared on screen in HBO’s *And Just Like That*. What exists today is not a set, nor a cinematic gesture, but a deeply resolved interior where restraint, craft, and spatial intelligence define a private world within the city.

Few façades in New York carry the cultural weight of 3 Gramercy Park. Yet past the stoop, beyond the mythology, unfolds an apartment conceived for real life. A home where luxury is practiced through discipline rather than display, and where every decision serves both function and atmosphere.



Crossing the threshold, the city recedes. The pace shifts immediately. Original proportions remain legible, but nothing is frozen in time. Circulation has been carefully reconsidered, not to impose a new order, but to clarify the existing one. Thresholds soften, alignments tighten, and a subtle arch draws the eye forward, guiding movement from entry to living space with quiet authority.

Each transition is intentional. Light, shadow, and rhythm are orchestrated to heighten awareness rather than distract from it. The apartment unfolds as a sequence of moments rather than a collection of rooms.



“There is no excess here,” says Matrês. “This isn’t minimalism as an aesthetic. It’s distillation. Every line, every junction, every material earns its place.”

The result is an interior where architecture and daily life are inseparable. Rooms are not zones but settings, shaped to support ritual, pause, and continuity.

*The APARTMENT as
a LIVED SEQUENCE*

CRAFT *as*
QUIET LUXURY

Material choices are deliberately restrained, yet uncompromising. Walls are finished in hand-applied plaster that absorbs daylight and shifts subtly as hours pass. Wide-plank oak floors by Listone Giordano, custom finished, ground the apartment with warmth and weight. Stone surfaces appear only where needed, defining wet areas with calm precision.

Cabinetry, crafted in solid oak by a master millworker, reveals its rigor only on close inspection. Grain alignment, joinery, and tolerances are exacting. Hardware disappears. Hinges are unseen. Nothing calls attention to itself.

In the kitchen, a monolithic block of honed stone anchors the space. Fully integrated Gaggenau appliances dissolve into the architecture, reinforcing a sense of continuity rather than utility on display. Bathrooms follow the same logic. Waterworks fixtures, stone, and oak custom vanities transform functional spaces into places of quiet retreat.

Luxury here is not announced. It is sensed through touch, movement, and proportion. Craft becomes narrative. Precision becomes comfort.



“It’s a grown-up New York fantasy,” says Matrēs. “Inhabited, not aspirational. Architectural, not cinematic.”

That distinction defines the project. What gives this home its strength is not visibility, but integrity.

FURNISHING *as*
an EXTENSION
of ARCHITECTURE

Furnishings are selected with the same discipline as the architectural framework. Pieces are chosen for their ability to age well, to hold space, and to interact with light rather than dominate it. Linen-upholstered seating by Liaigre, hand-waxed wood tables, sculptural bronze lamps, and carefully placed works from B&B Italia and Roche Bobois form a composition that feels inevitable rather than styled.

Objects appear settled, as though they have always belonged. Books rest in custom-built shelving. A single ceramic piece occupies an oak ledge. A photograph, framed in bronze, captures a quiet moment without explanation. Nothing competes. Everything contributes.



BEYOND *the* FAÇADE,
beyond FICTION

Despite its on-screen recognition, this apartment was never conceived as a backdrop. Every decision predates the cameras. The renovation was designed to support a real family, daily routines, and long-term inhabitation. Permanence was always the goal. Trend was never a consideration.



LUXURY *as* PRESENCE

At Gramercy Park, elegance reveals itself through alignment, restraint, and time. Through the way materials respond to touch. Through how light moves across surfaces throughout the day. Through the confidence of knowing the space has been conceived for decades, not moments.

This project reflects Antonio Matrês Design's belief that true refinement is not about display. It is about fidelity to craft, to context, and to the quiet choreography of living well.

Behind the celebrated façade lies a sanctuary. Precise. Composed. Enduring.

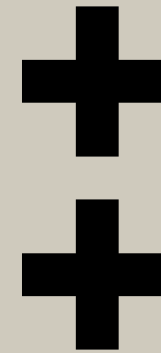
*“The home doesn't exist to impress,”
Matrês reflects.*

*“It exists to support life, quietly
and completely.”*

And indeed, it does.



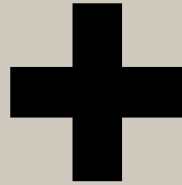
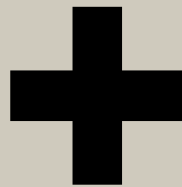
STILLNESS IN FORM



STILLNESS *in* FORM

LUXURY
ARCHITECTURE
& INTERIORS
by antonio matrès

NEW YORK



MADRID

**an⁺tonio
ma⁺très**

ELEVATING THE ART
OF LIVING

©2026