

1535 Fieldhouse Ave Elkhart, IN 46517

PROPERTY HIGHLIGHTS

Lease Price: \$3.75/SF, NNN

CAM: \$0.75/SF (Taxes, Building Insurance,

Exterior Maintenance)

Total Size: 146,324 SF

Office: 5,168 SF

Land: 18.48 Acres

Zoning: M-1 Light Manufacturing

Year Built: 1953

Grade Level Doors: 1-14'x14 w/opener

Docks: 6 Interior docks w/levelers & openers

Rail: 2 Doors to spur, room for additional

Eave Height: 16' eaves (14.6' to bar joist)

Bay Spacing: 25' x 40'

Construction: Concrete Block

Roof: Rubber membrane

Power: 480 Volt/200 Amp/3 Phase

Lighting: LED

Heating: Gas Unit

Air-Conditioning: Offices

Fire Protection: Yes

Restrooms: Yes

Utilities: City Water & Sewer

Taxes: \$0.33/SF (Included in CAM)



PROPERTY DETAILS

146,324 SF warehouse/distribution facility on the west side Elkhart, IN just east of SR 19 with quick access to the US 20 Bypass. The building features Rail w/2 doors, 6 interior docks, 2 grade level overhead doors, security system, and a 25' x 25' maintenance garage w/overhead door. Close proximity to the UPS hub and easy access to the Amazon distribution facilities in Elkhart.



Make contact.

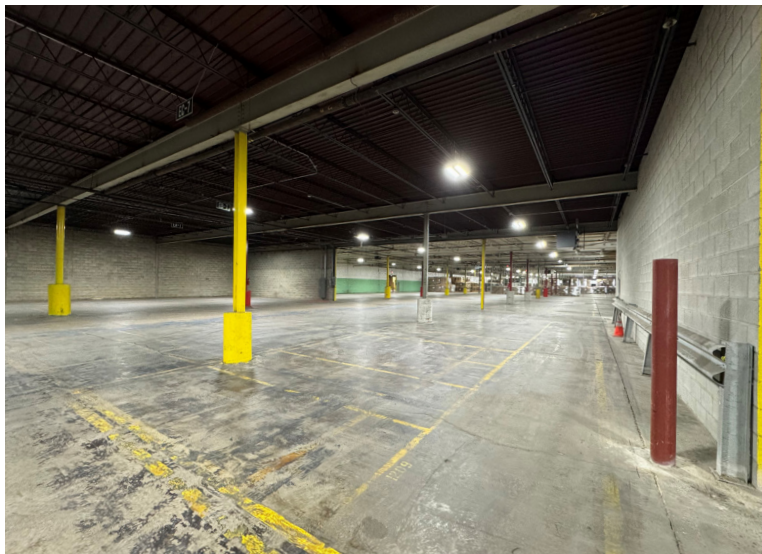
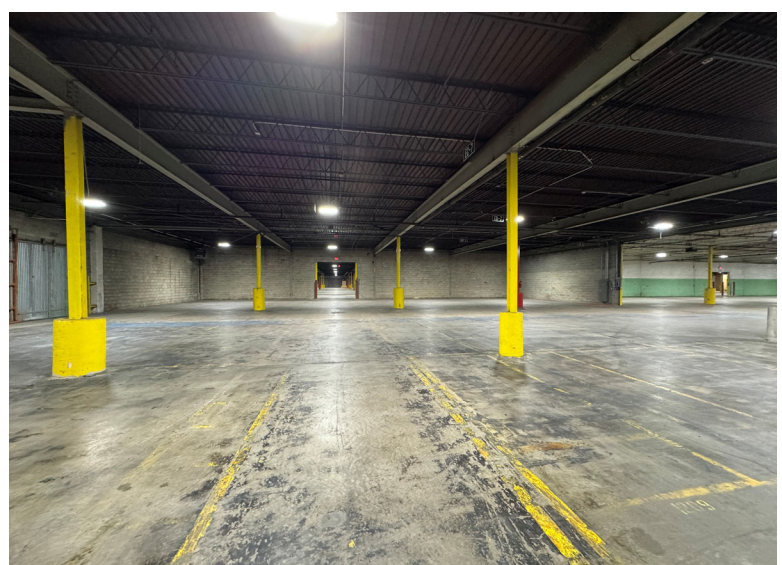
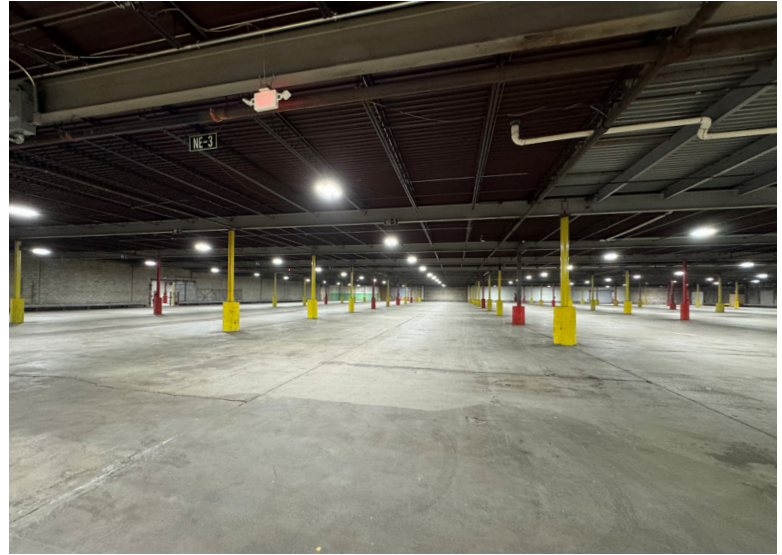
Brent C. Miller, SIOR
Principal, Managing Broker
Cell: 574-536-4438
Direct: 574-501-3202
brentm@endeavour-grp.com

Endeavour Commercial
22047 Endeavour Dr., Elkhart, IN 46514
P 574-292-7995
endeavour-grp.com



ENDEAVOUR
COMMERCIAL

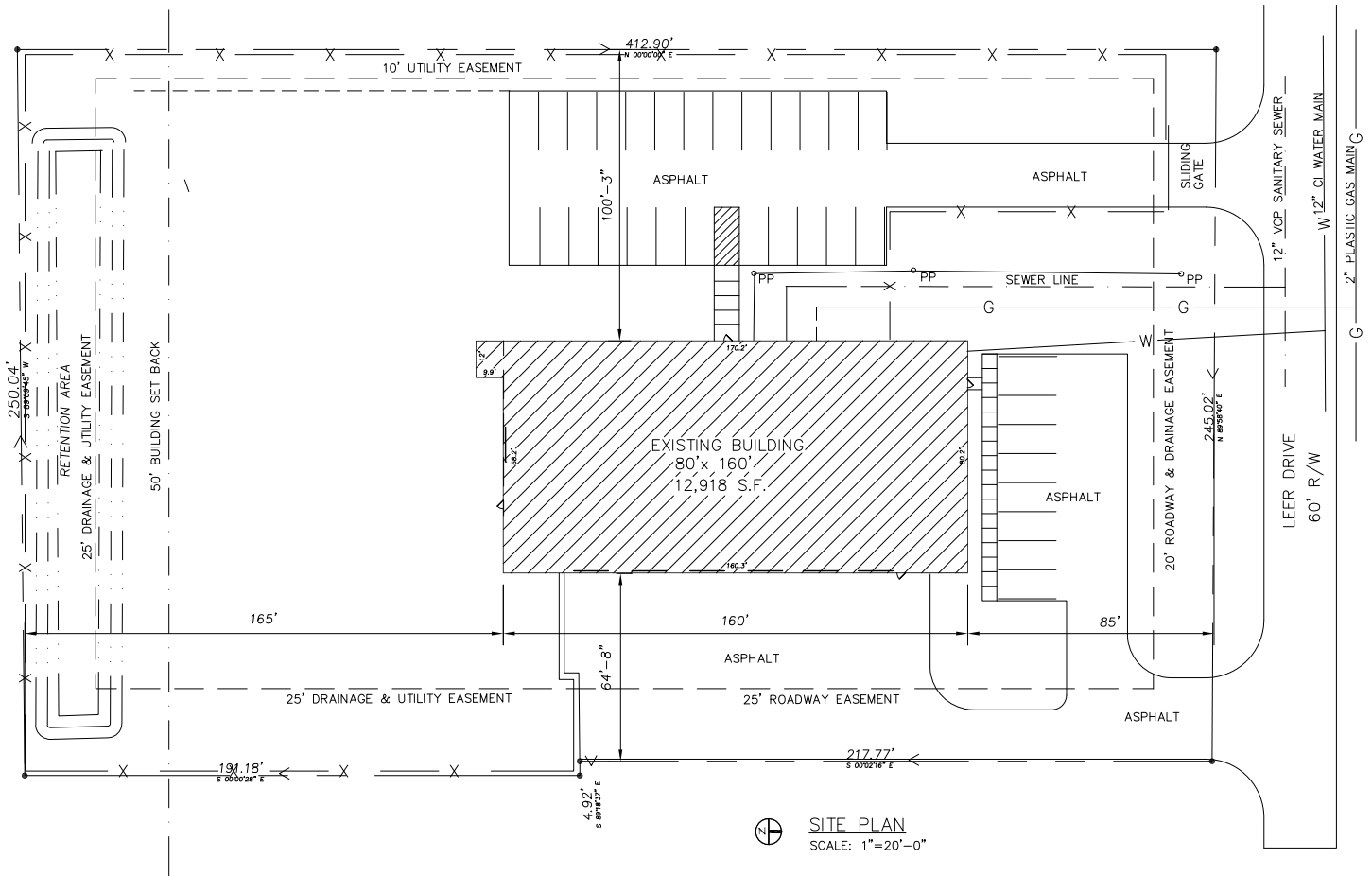
INDUSTRIAL BUILDING FOR LEASE



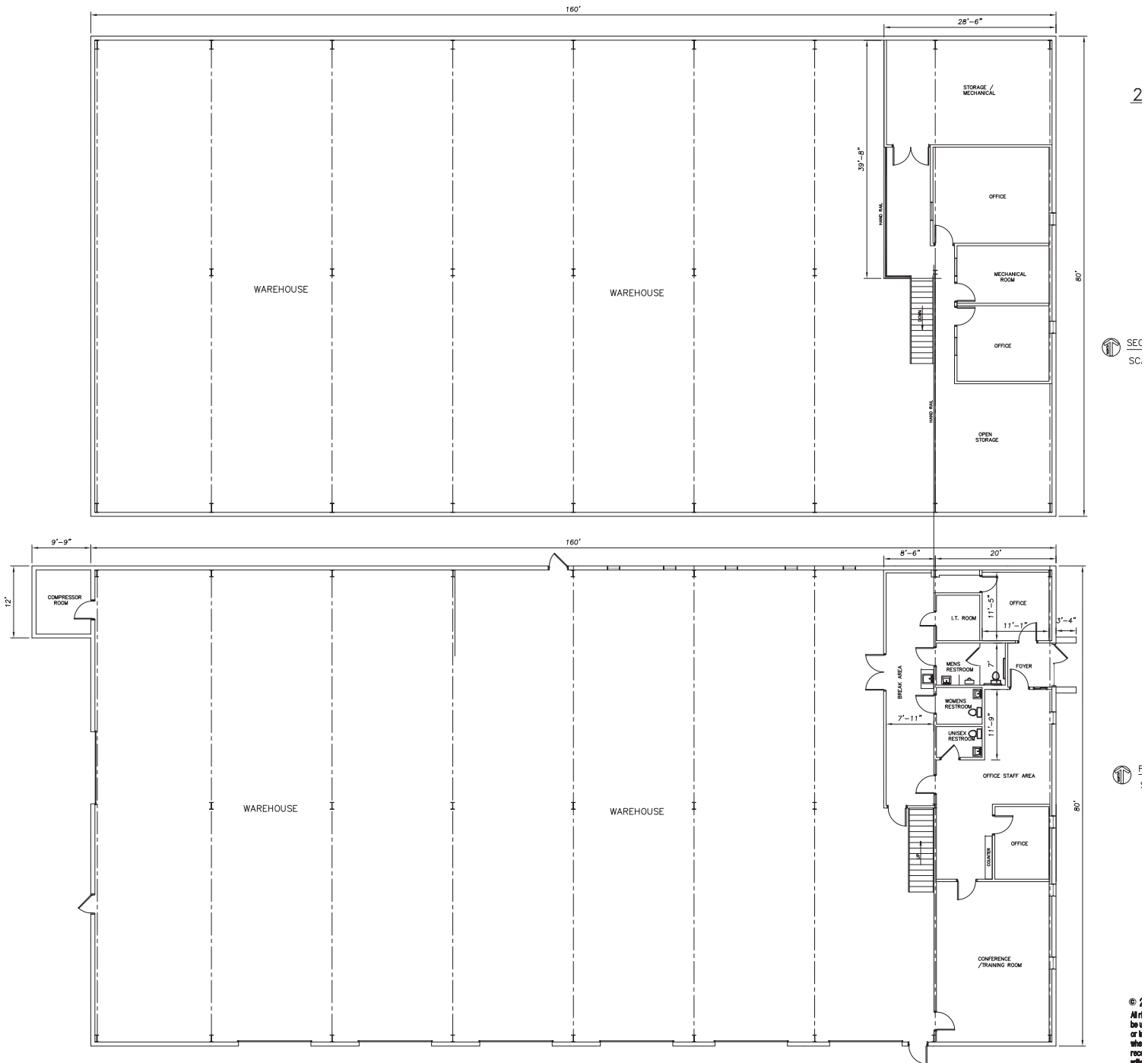
The information contained herein was obtained from sources believed to be reliable. We cannot be responsible for errors, omissions, prior sale or lease, change of price or withdrawal from the market without notice. No liability of any kind is to be imposed on the broker herein.



SITE PLAN



FLOOR PLAN





ENDEAVOUR
COMMERCIAL

INDUSTRIAL BUILDING FOR LEASE

