



INDUSTRIAL BUILDING FOR SALE

\$225,000

**52395 CR 29
Bristol, IN 46507**

PROPERTY HIGHLIGHTS

Sale Price: \$225,000

Total Size: 4,571 SF

Building 1: Barn: 3,679 sq ft

Building 2: Out-building: 892 sq ft

Land: 0.97 Acres

Zoning: DPUD M-1 Manufacturing

**Year Built: Barn: 1947-addition in 1957 and
Out-building: 1951**

Construction: Wood-Joist

Roof: Steel Shingles

Taxes: \$978.12



PROPERTY DETAILS

Prime location near the I-80 Toll Road and Downtown Bristol. With DPUD M-1 zoning this property offers endless possibilities. Uses range from storage, artistry, woodworking, or metal fabrication just to name a few. The main building has multiple areas with doors, and the out-building is another nice workshop with tons of potential. Partial new fence around the property, 15 year old Steel Shingle roof, partial rebuilt outbuilding with new Joists and Studs, and a new garage door on the out-building. Don't miss out on this rare opportunity!



Make contact.

Brent C. Miller, SIOR
Principal, Managing Broker
Cell: 574-536-4438
Direct: 574-501-3202
brentm@endeavour-grp.com



Make contact.

Brycen Wrigley
Broker
Cell: 574-849-7221
Direct: 574-501-3201
brycen@endeavour-grp.com

Endeavour Commercial
22047 Endeavour Dr.,
Elkhart, IN 46514
P 574-292-7995
endeavour-grp.com



ENDEAVOUR
COMMERCIAL

INDUSTRIAL BUILDING FOR SALE

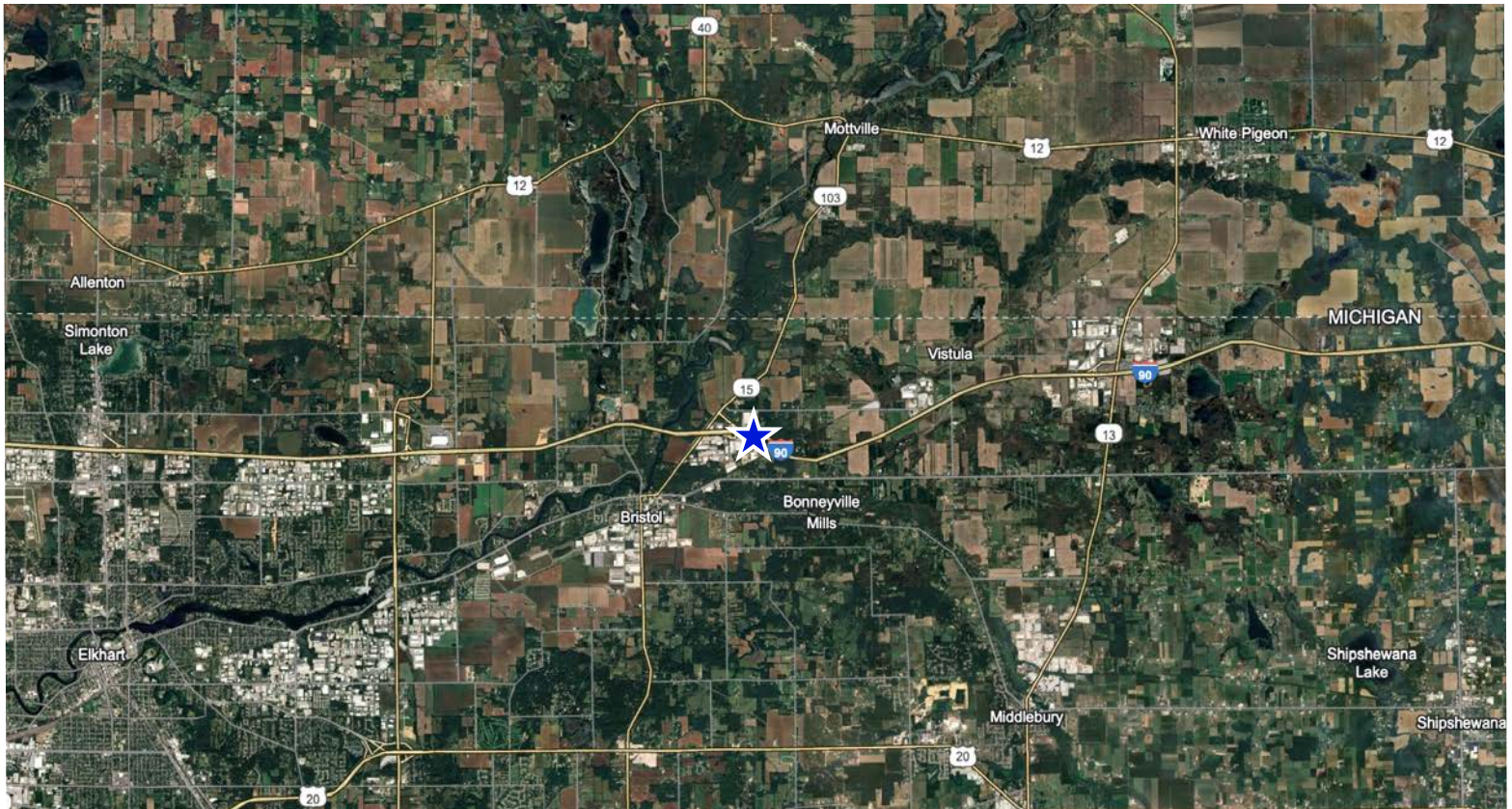


The information contained herein was obtained from sources believed to be reliable. We cannot be responsible for errors, omissions, prior sale or lease, change of price or withdrawal from the market without notice. No liability of any kind is to be imposed on the broker herein.



ENDEAVOUR
COMMERCIAL

INDUSTRIAL BUILDING FOR SALE



The information contained herein was obtained from sources believed to be reliable. We cannot be responsible for errors, omissions, prior sale or lease, change of price or withdrawal from the market without notice. No liability of any kind is to be imposed on the broker herein.